

**A- Changing The Door Swing Direction to Right Hand**

**1-** Unscrew the two screws which are fixing the middle hinge. (Fig-1) Also remove the two middle hinge screw caps (big) on the left side.

**2-** Dismantle the refrigerator and freezer door from cabinet by pulling towards to you together with the middle hinge. (Fig-2)

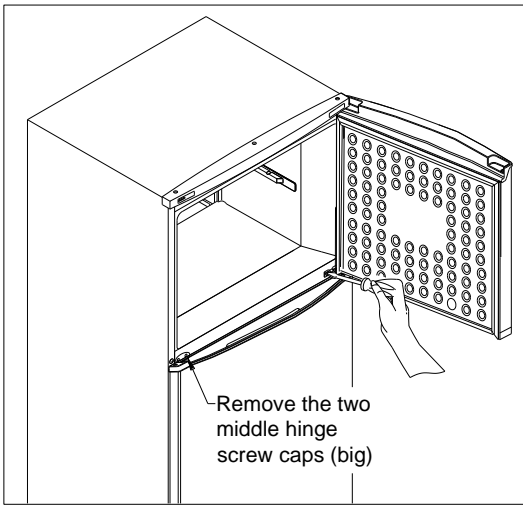


Figure-1

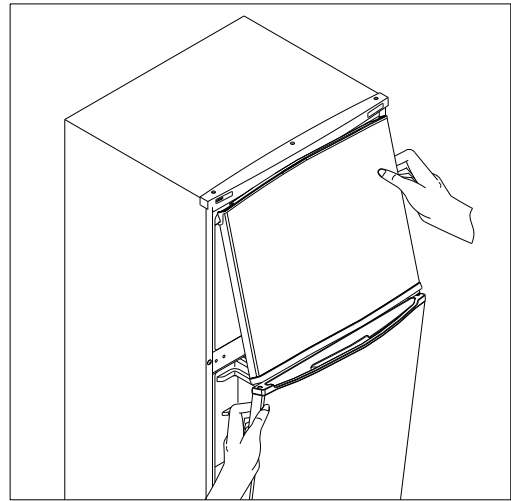


Figure-2

**3-** Remove the kick plate by pulling forward. Unscrew the bottom hinge fixing screws and remove it. Unscrew the pin of the hinge from Hole 1, rotate the bottom hinge 90° and screw the pin to Hole 2. (See Detail A) Then screw the hinge to bottom left side of refrigerator. (Fig-3)

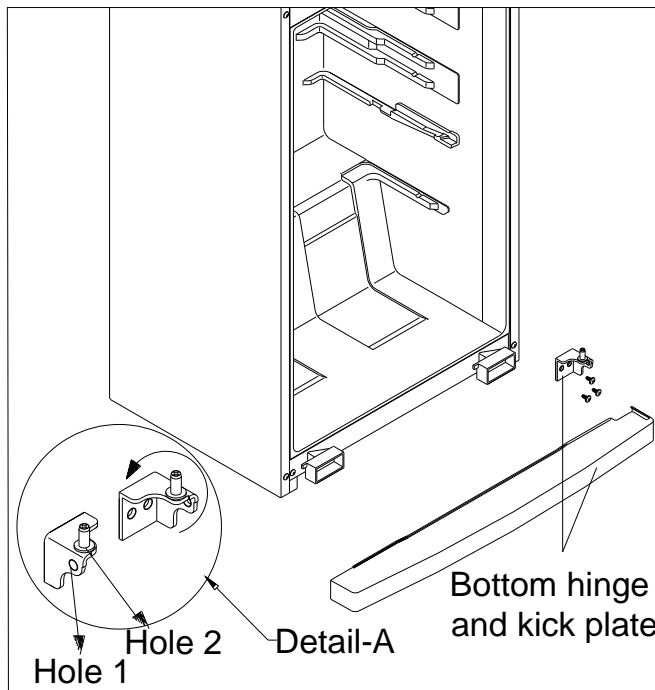


Figure-3

4- Remove the head panel hinge covers and unscrew the two screws fixing the top hinge and remove it. Unscrew the pin of the top hinge. Turn the hinge by 180° then screw it to the left side hinge holes. Screw the pin of the top hinge.(Fig 4) Fix the hinge covers by replacing the right and left one. Insert the two middle hinge screw caps (big) that are put in the user manual bag to right side cap holes.

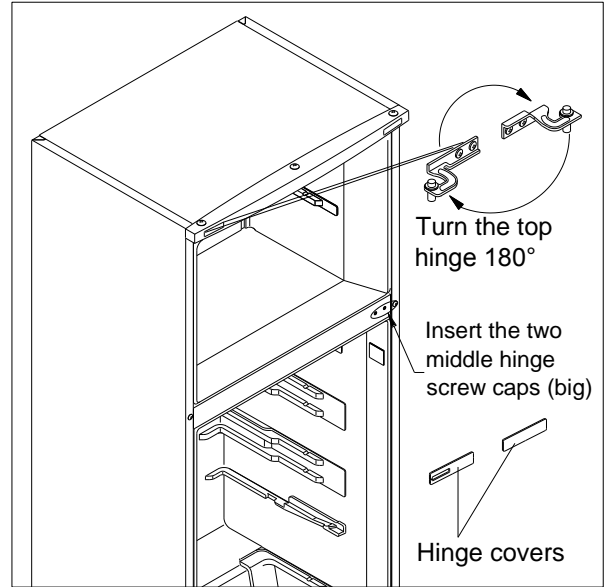


Figure-4

5- Replace the top bushing and top bushing cap. (Fig-5) (You can use the bushing cap that is put in the user manual bag) Remove the bottom bushing and bottom stopper and assemble them to the left side. (Fig-5)

6- Remove the right door catcher and assemble the left door catcher (which is put in the user manual bag) to the left. (FIG-6)

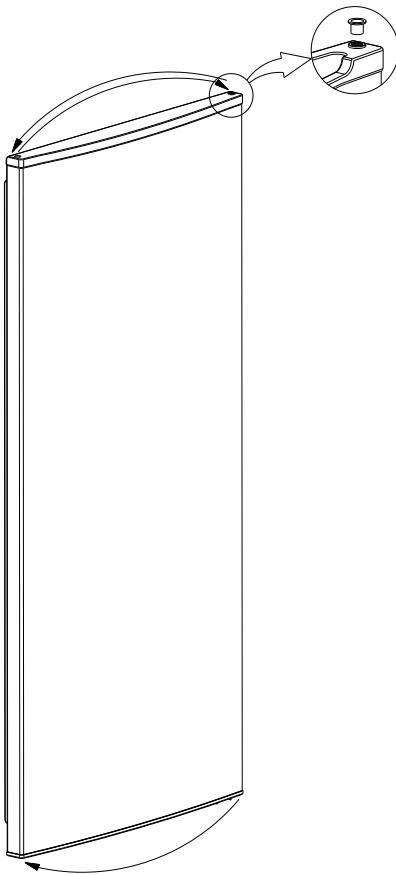


Figure-5

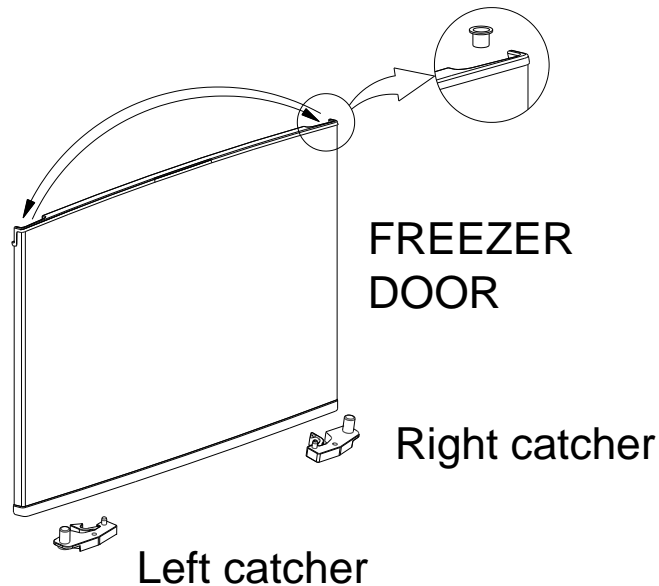


Figure-6

7- Turn the middle hinge 180°. Assemble the freezer door and refrigerator door together with middle hinge (Reverse operation of item 2) Fix the middle hinge by tightening the screws. Finally, by using a knife cut left side of the kick plate and assemble it. (Fig-7)

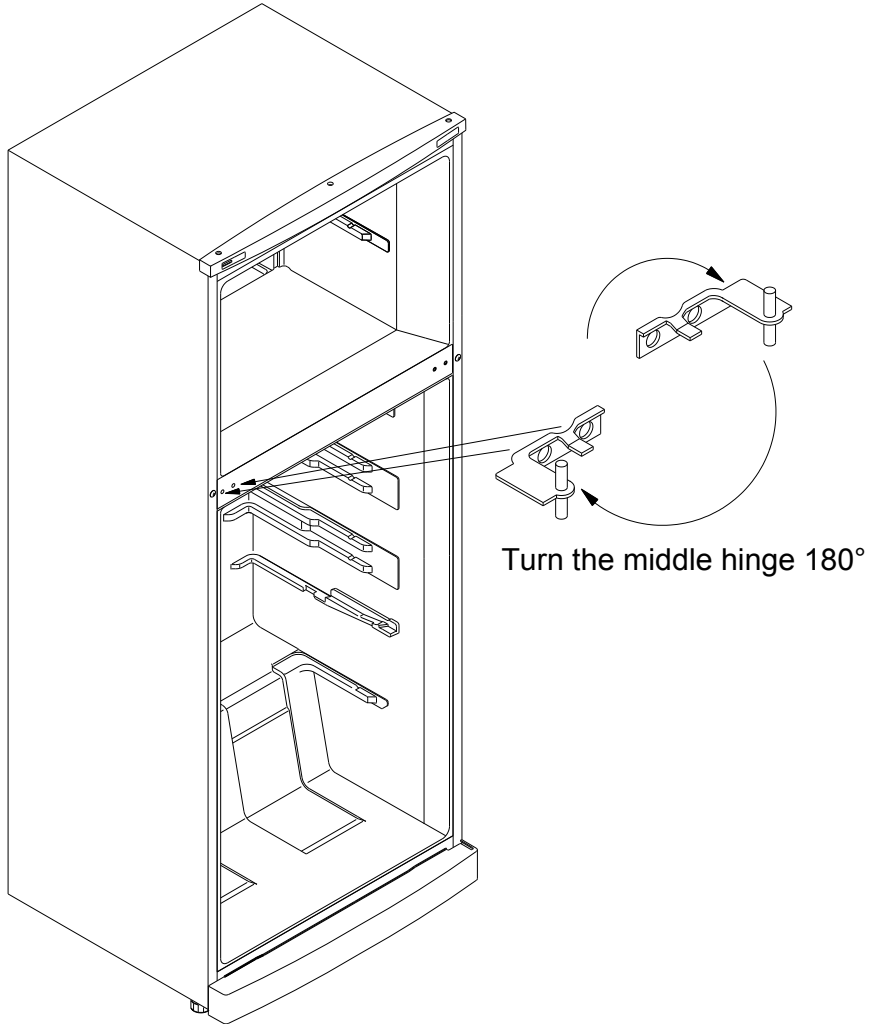


Figure-7

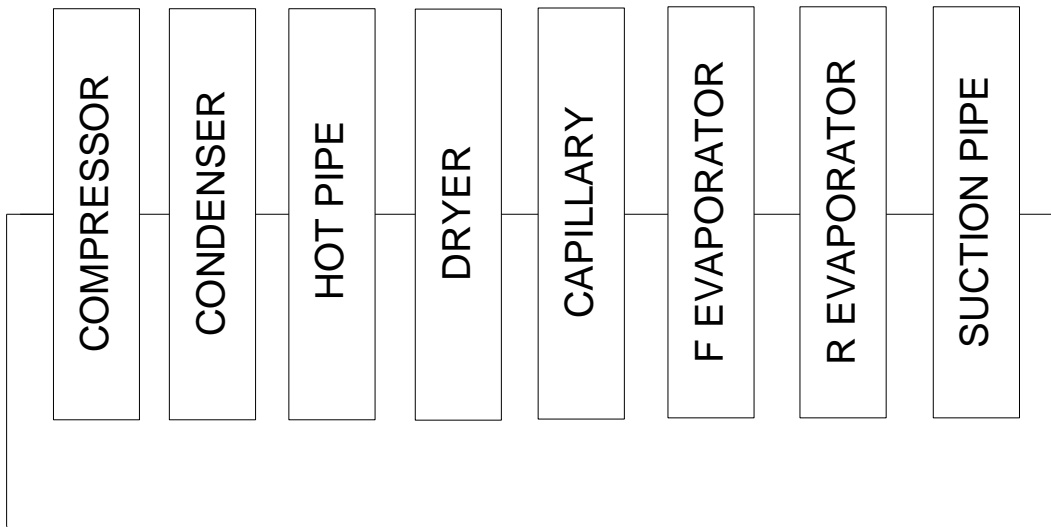
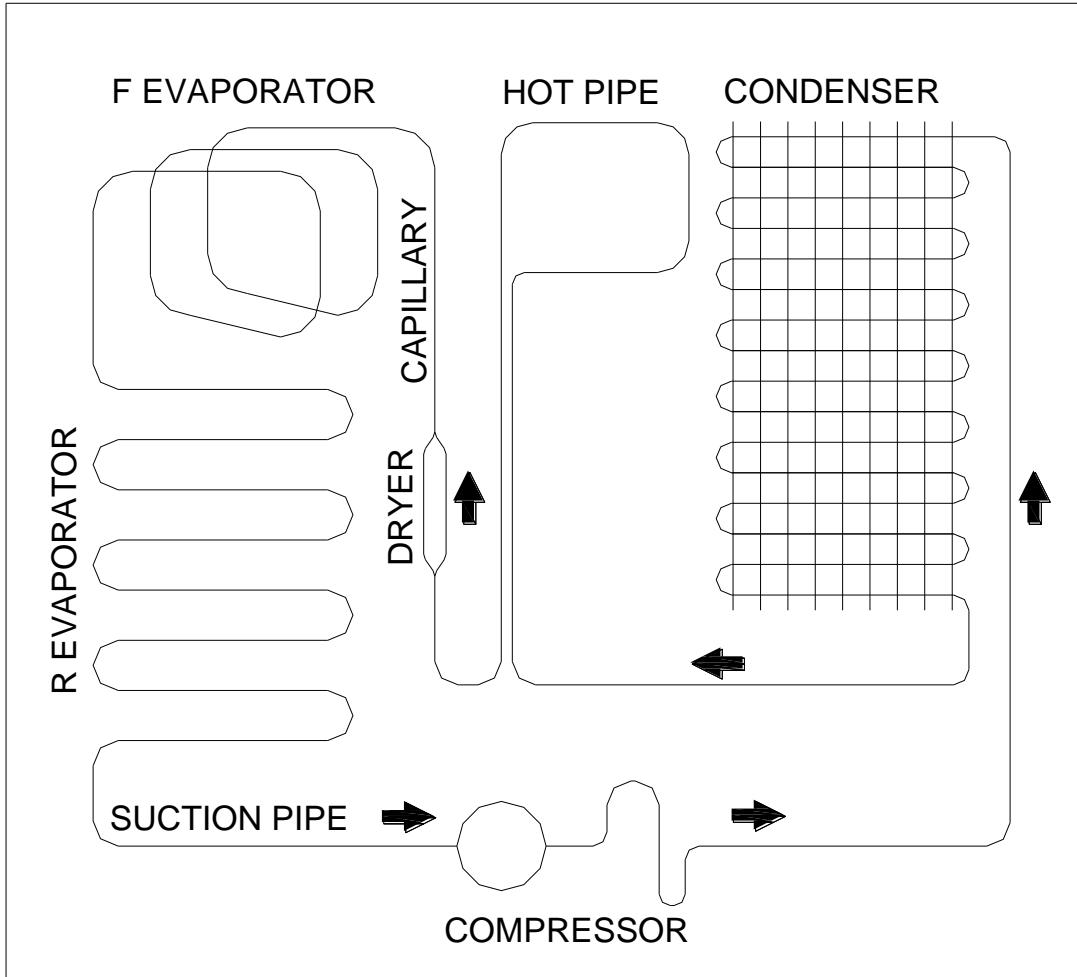
<b>VESTEL</b> WHITE GOODS	<b>DOUBLE DOOR</b>	<b>CUSTOMER          SUPPORT</b>
	<b>ASSEMBLE &amp; DISASSEMBLE</b>	

### **B - Changing The Thermostat :**

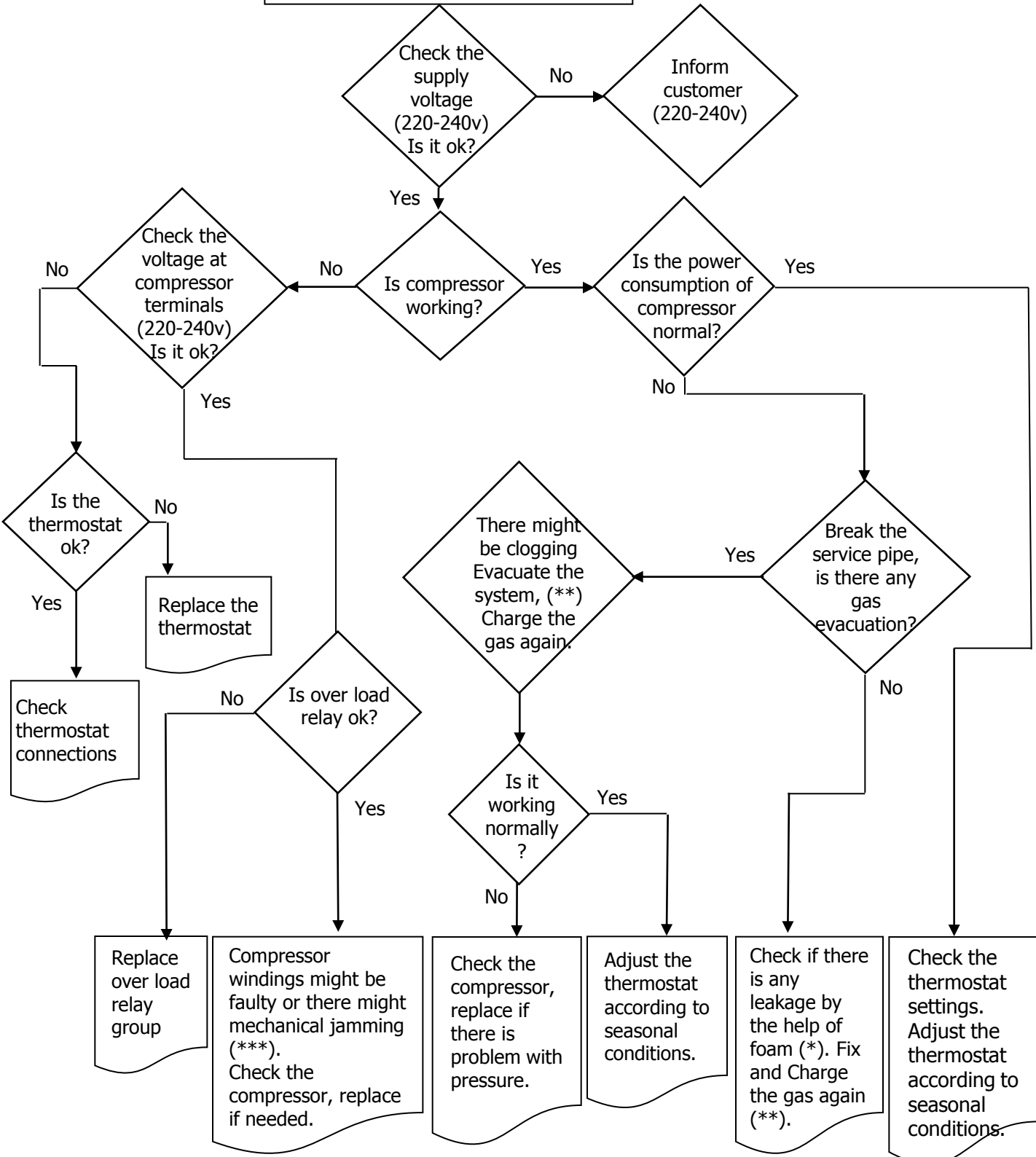
- 1) Remove the lamp cover and unscrew the fixing screw.
- 2) Remove the thermostat box by pulling it and disconnecting the cable terminals.
- 3) Remove the thermostat knob by pulling forward. Loosen the nut which is fixing the thermostat.
- 4) Pull out the thermostat bulb from the housing.
- 5) Replace the thermostat with the new one and assemble the thermostat box following the steps backwards.

### **C - Thermostat Knob**

- This knob is used to control the temperature of the freezer and refrigerator parts automatically. It can be set to any value between “0” and “5” positions.
- “0” position indicates that the thermostat is “off”. The refrigerator is “off” on this setting.
- By turning the knob between “1” and “5”, you can increase or decrease the cooling degree.
- The refrigerator is designed to get optimum performance when the thermostat knob is set between position “2” to “4”.

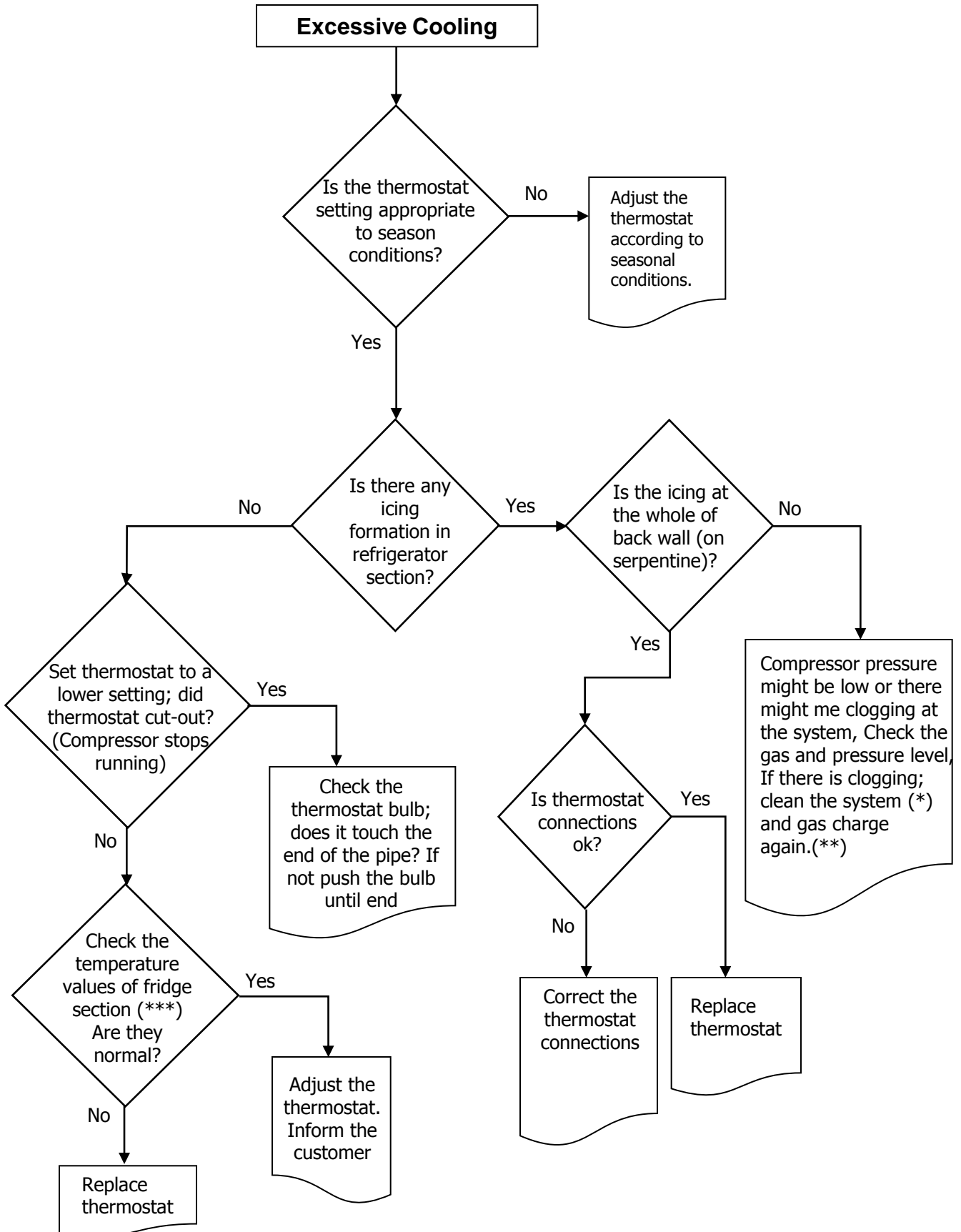


**No/Insufficient cooling**

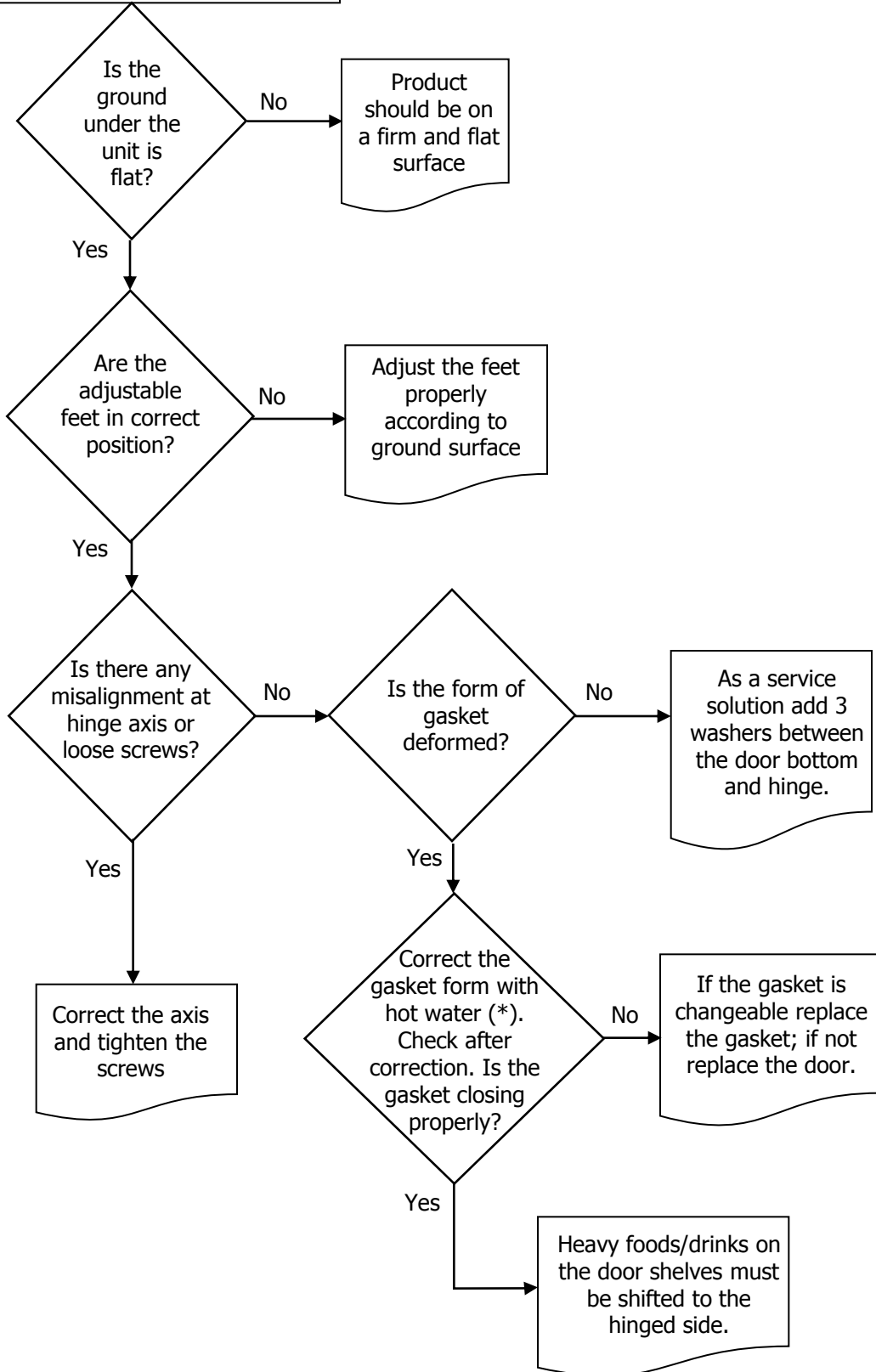


(\*) Check all pipes, tubes and welding points against gas leakage. (\*\*) Before charging gas to system, change dryer and vacuum at least 30 minutes, then charge the system with amount written on label (\*\*\*) Compressor primary winding should be around 10 Ω and secondary around 15 Ω (at 25°C ambience temp.)

**Excessive Cooling**



**Door/Gasket Adjustment**



(\*) Correct the gasket form by the help of hot water and hair dryer.



