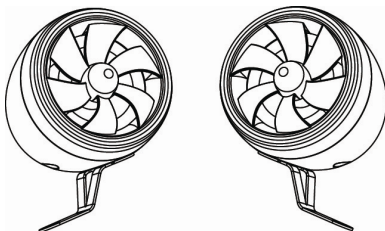


# shark<sup>®</sup>

## USER MANUAL

SHKC6800 AND SHKAMP5800BT



## **CONTENTS:**

FUNCTIONS AND SPECIFICATIONS.....	3
FUNCTIONS KEY INSTRUCTION.....	5
INSTALLATION.....	6
IMPORTANT SAFETY PRECAUTIONS.....	7

## FUNCTIONS AND SPECIFICATIONS

Details functions on amplifier

SD slot input

USB slot input

3.5mm Aux input for any MP3 player or other audio device( even CD's, tablet, IPad, ect.)

### Bluetooth indicator light

- Bluetooth function: Advanced A2DP, stereo music/ audio function (transmits from A2DP enabled cell phone, MP3, GPS, IPAD, IPAD2, Iphone, Tablet pc, computer, ect.)
- FM radio ( Frequency range 87-108MHz)

### IR indicator light

- Wired remote control
- Wireless remote control
- External antenna interface for Bluetooth and FM radio
- Details functions for remote control
- Power/Mode Key
- Volume +/-
- Next/ Last song
- Pause Key
- FM radio indicator light
- MP3 indicator light
- Wireless remote control:
- Wireless remote control:
- CH-
- CH
- CH+
- Next song
- Last song
- Pause key
- -/ Volume-
- +/Volume+
- EQ
- 100+
- 200+
- Number key ( from 0 to 9)

## Specifications:

### SHKC6800

Operation Voltage	10~10V
RMS Power @4Ω10% THD	60W*4
MAX Power @4Ω10% THD	250W*4

### SHKAMP5800BT

Operation Voltage	10~10V
RMS Power @4Ω10% THD	60W*2
MAX Power @4Ω10% THD	300W*2
THD	<0.1%
S/N	>50 dB
Channel Separation	>50 dB
Frequency Response	20Hz-20kHz
Sensitivity	150mv
Fuse Rating	5Ag

## SPEAKERS

Voice Coil Impedance	4
Response Frequency	165HZ
Effective Frequency Range	FO-12kHz
Input Sound Pressure Level	88dB
Rated Input Power	75W
Max Input Power	100W
Distortion	≤5%

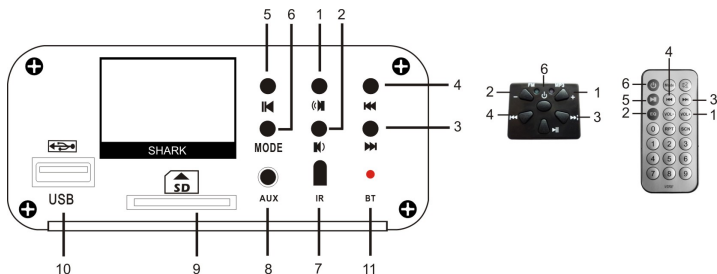
## ACCESSORIES

Amplifier	1PC
Loud Speaker	2PCS
External Antenna	1PC
Wired Remote Control	1PC
Wireless Remote Control	1PC
Power Cable	1PC
Audio Cable	1PC
Mounting Plate	2PCS
Screw Kit	1PC
User Manual	1PC

### SHK6800

Loud Speaker	4pcs
Mounting Plate	4pcs

# FUNCTION KEY INSTRUCTION



1. Volume +
2. Volume -
3. Last song ( short press), Fast forward(long press)
4. Next song( short press), Fast backward (long press)
5. Play/Pause key
6. Power on /MODE key, Power on (long press), MODE( short press)
7. IR
8. 3.5mm Aux input for mp3 player or audio device.
9. Insert SD card to play
10. USB
11. BT indicator

## Insert SD card to play



3.5 mm Aux input for mp3 player or audio device. Long press Power on key to turn on the unit, short press MODE key to chose " Audio input" on the screen, like the above picture. Then it can play the song on SD card and MP3 in 3.5mm Aux input. Play/Pause key: Long press (3 seconds) Play/Pause key to chose 1, A, R, D( play mode), "1" means one song recycle play, "A" means All song recycle play, "R" means Random play, "D" means Normal play. It shows these small 4 letters on the screen in yellow color.

## FM radio: from 87MHZ to 108MHZ

Short press MODE key to chose FM radio, long press Play/Pause key to auto search radio station and save.

## Bluetooth (Wireless connect):

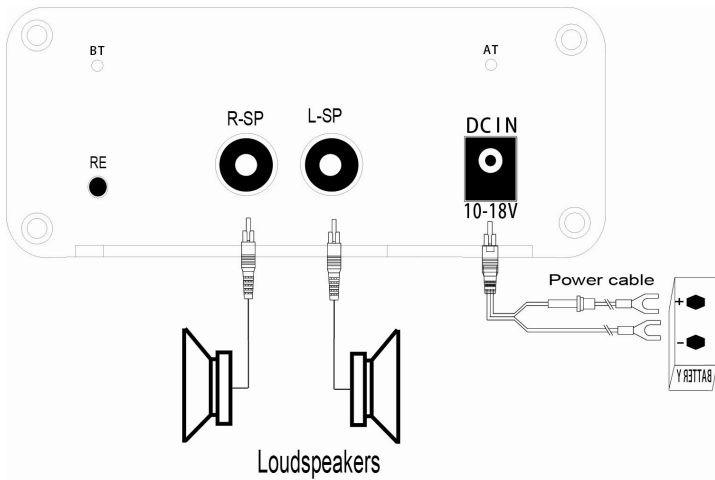
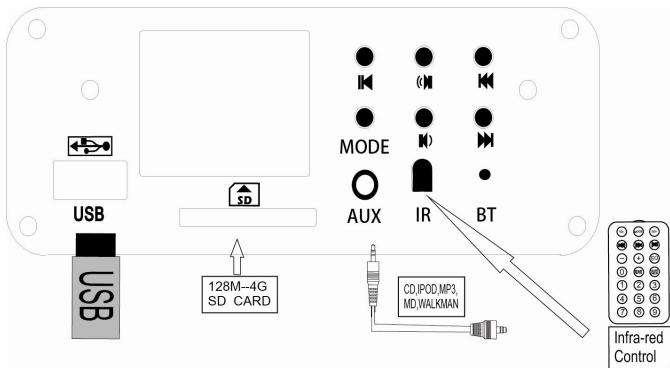
Short press MODE key to chose Bluetooth and open Bluetooth on your cell phone(IPHONE), IPAD, Tablet pc, GPS, computer ect. To pair and connect the name of "BTA215", press the pass

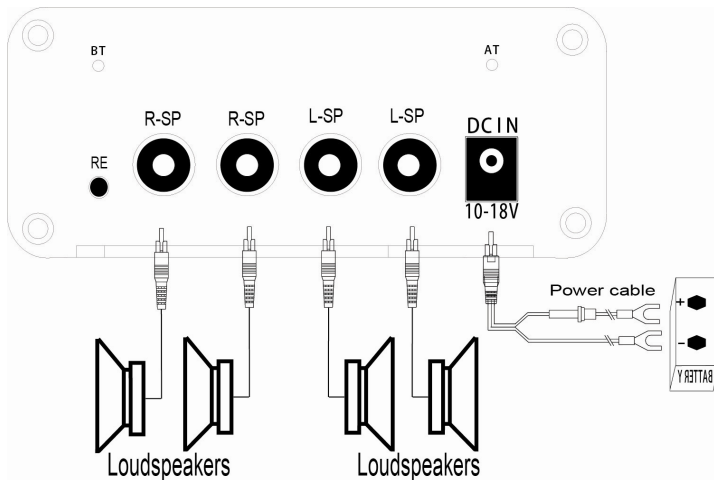
word: "0000". You can operate the control operation box to control, next last song, next song, volume control, play and pause, ect. If you do not close the Bluetooth, even you press to

chose other Mode, like Audio input, FM radio, ect. It auto connect to Bluetooth, no need to pair again.

## INSTALLATION

SHKAMP5800BT





## IMPORTANT SAFETY PRECAUTIONS

1. Please don't operate the unit when you are driving.
2. Please take off external antennas when raining.
3. Please don't connect the wrong power, the unit working voltage 10-15V DC at 40hm.
4. Please don't touch the amplifier when it is working, to avoid hurting your hand. and install the amplifier in a safety place.