

**WEB CAM**  
**500 SX**  
**USER**  
**MANUAL**  
MODEL 460491



  
**MANHATTAN™**

## INTRODUCTION

Thank you for purchasing the MANHATTAN® Web Cam 500 SX, Model 460491.

With simple, operation and easy-to-use software, the Pro Cam's 5.0-megapixel (software interpolated) CMOS lens captures crisp and clear images and smooth, steady video to share with family and friends. Automatic color balance, exposure and brightness controls combine with focus and tracking functions for professional results. Its versatile base with universal clip and swivel mount easily installs with most flat-panel displays and notebook or netbook computers.

The compact size, attractive finish and Plug and Play installation make it a good accessory for desktop and notebook PCs, and by following the instructions in this user manual — or the simpler setup procedure in the printed quick install guide included with the product — you'll soon be enjoying these popular features:

- Enhance online communications, instant messaging, blogs and more – easily capture and share photos and video
- Automatic tracking keeps subjects sharp and in-frame without adjusting camera position
- Self-adjusting color, exposure and brightness levels maximize clarity in varying light conditions
- Personalize conversations and images with special 18 video and 6 frame effects
- High-performance megapixel sensor with powerful 4x digital zoom function
- Versatile base with clip and swivel mount ideal for flat-panel displays, notebook and netbook computers
- Plug and Play installation – Windows compatible
- Lifetime Warranty (For a complete list of country-specific warranties, go to [www.manhattan-products.com/warranty](http://www.manhattan-products.com/warranty).)

### Package Contents

- Web Cam 500 SX
- Software CD
- Quick install guide

### System Requirements

- IBM PC-compatible computer or notebook with USB port
- Pentium 200 or higher CPU
- Windows XP/Vista/7
- 20 MB of HDD space
- CD-ROM drive
- VGA display card for DirectX

## HARDWARE

1. With your computer on, plug the camera into a USB port on the PC/notebook/netbook.
2. Use the universal clip on the camera base to position the camera as desired.

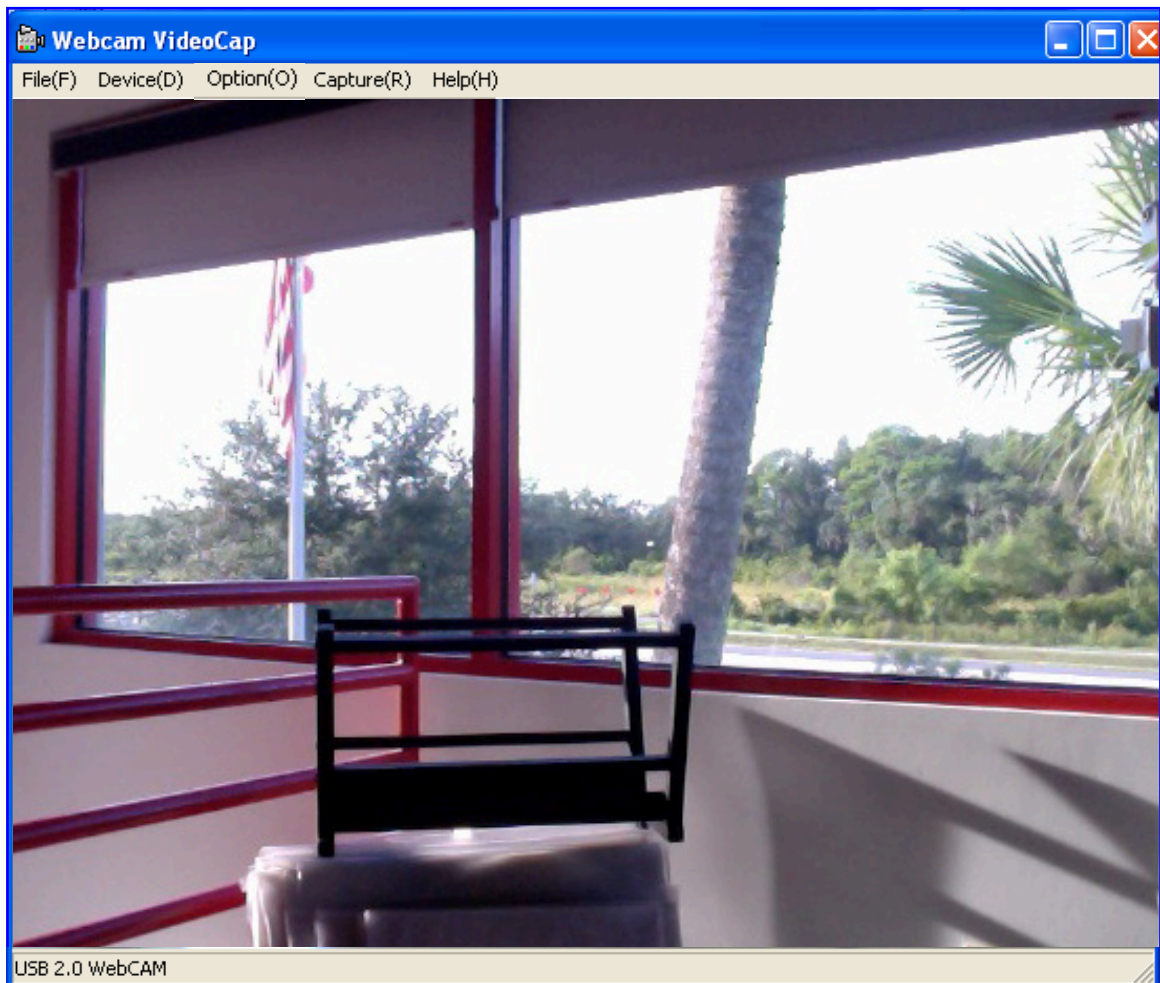
**NOTE:** You may prefer to wait until you are adjusting the focus ring during the software installation so you can view the camera image. (See the procedures below in Software Installation.)

3. Press the snapshot button to capture and file still images. (Refer to the Capture section in Software Installation.)



## SOFTWARE INSTALLATION

1. With the camera connected to your computer through a USB port, insert the included software CD in the CD-ROM drive. The installation procedure will launch and run automatically, displaying a series of screens and easy-to-follow procedural prompts.
2. Follow the on-screen instructions presented by the InstallShield Wizard. **NOTE:** The steps and screen images represent Windows XP and may vary slightly from those for Windows Vista and 7. Refer to your operating system user manual as needed.
3. When you're finished with the InstallShield Wizard, go to Start on your desktop, then Programs. Select "Webcam/Webcam VideoCap" to display the initial menu screen and active camera image (below). The default output size of the image is 640 x 480 pixels.

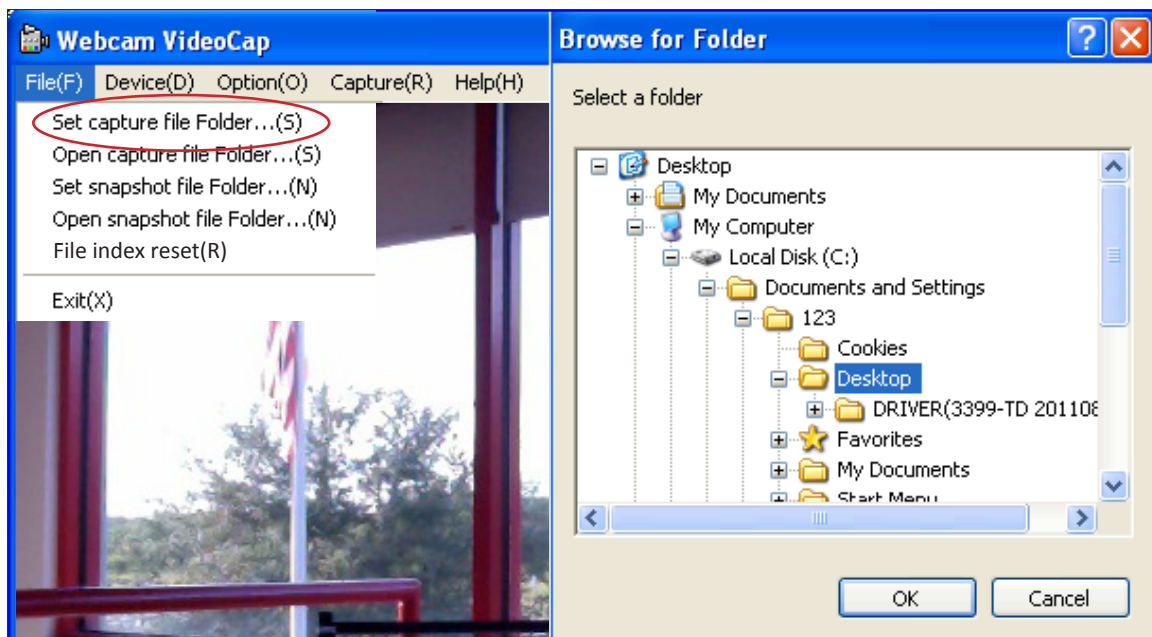


The Menu bar is at the top of the image screen. Beneath the image, the camera in use is identified. The feature items on the menu bar — File, Device, Options, Capture and Help — give you access to the various settings that let you configure your camera for optimal enjoyment.

## File

- *Set Capture File Folder*

When this option is selected, a window will open so you can select a location for saving captured video. This only needs to be done once: The VideoCap software program will continue to write to the same folder each time a video is saved.



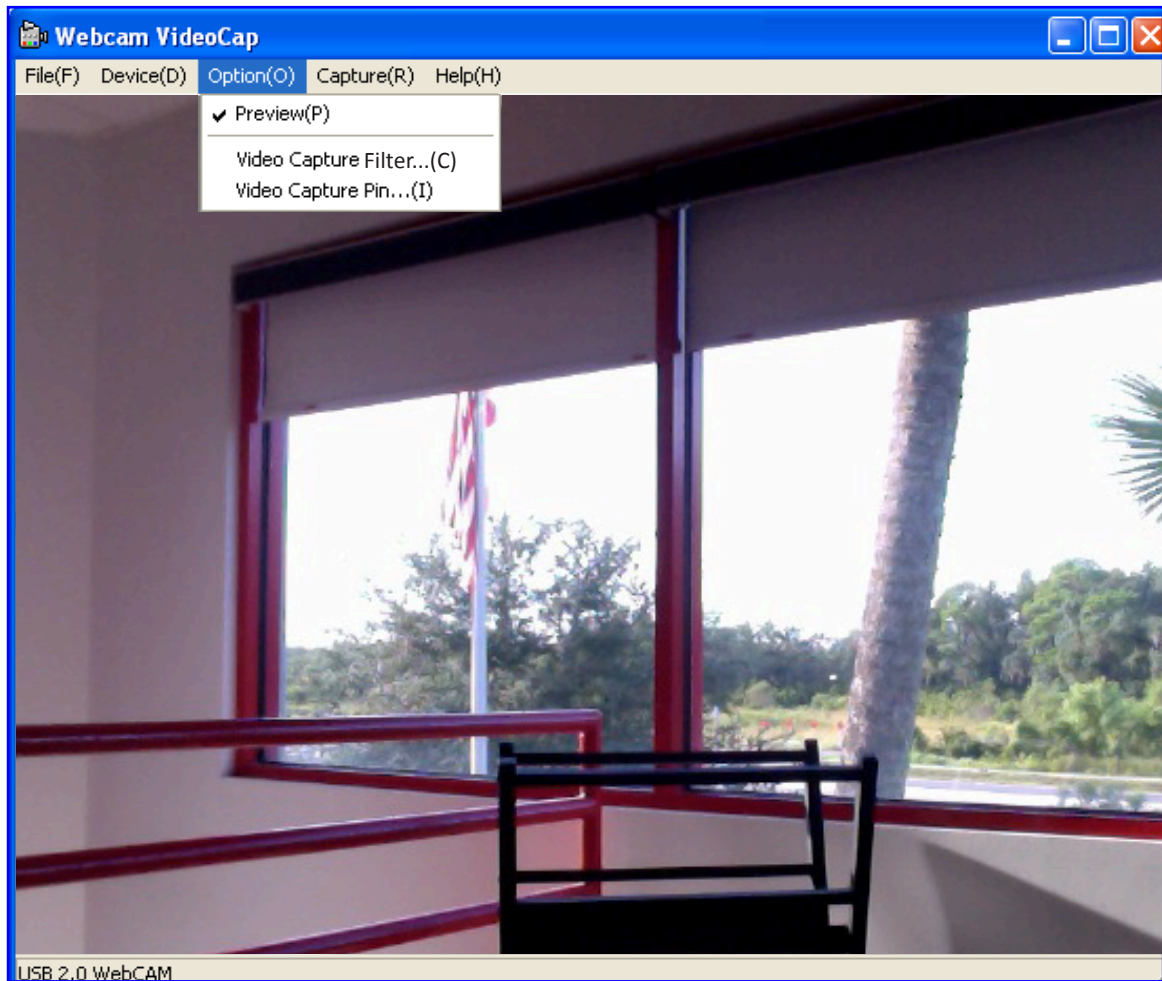
- *Set Snapshot File Folder*  
When this option is selected, a window will open so you can select a location for saving captured snapshots. This only needs to be done once: The VideoCap software program will continue to write to the same folder each time a snapshot is saved.
- *File Index Reset*  
This resets the location of the video and snapshot save locations.
- *Exit*  
This exits and shuts down the application

## Device

This will display a list of available video input devices and audio input devices. When you make your selections, a check mark will appear next to each active device.

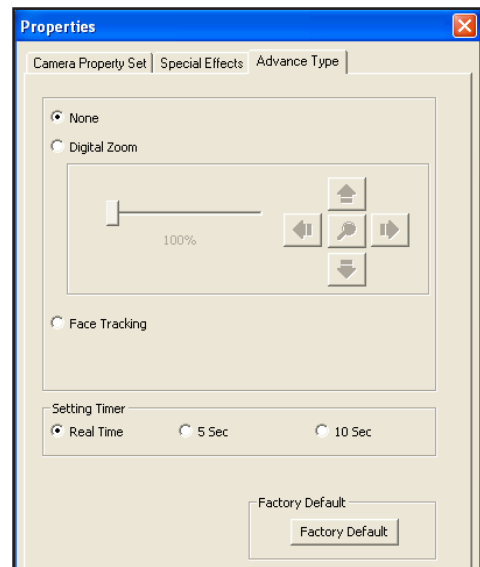
## Options

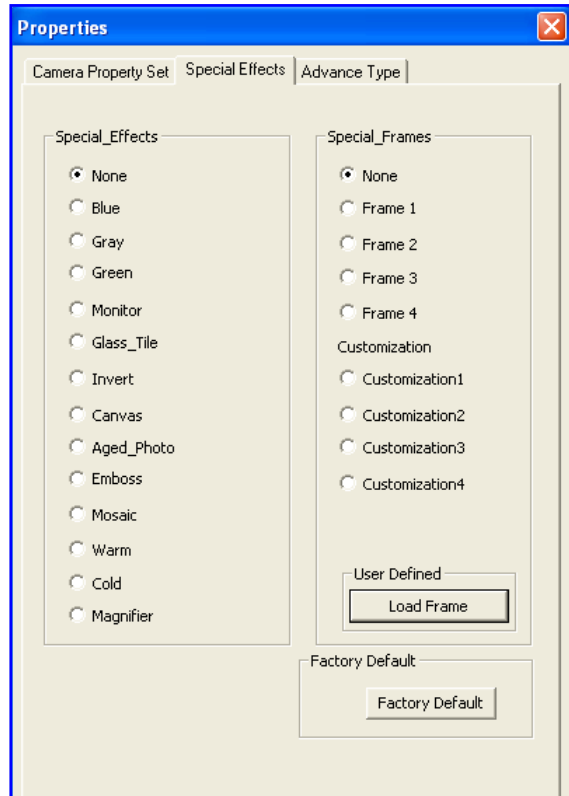
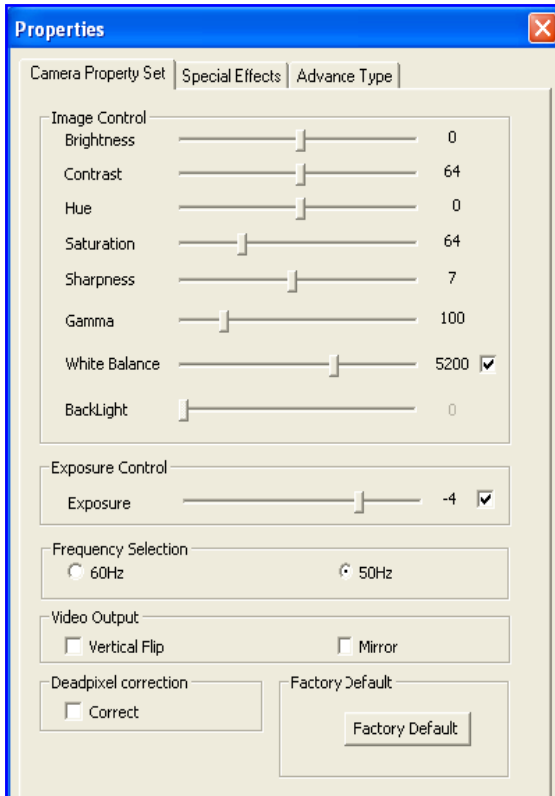
- *Preview*  
If this option is selected (see image below), the video seen by the camera is displayed in the main window. If there is no check mark next to Preview, the image in the main window will not be updated. If video is captured, it will show what is being captured in the main window even if Preview is not checked.



- *Video Capture Filter*

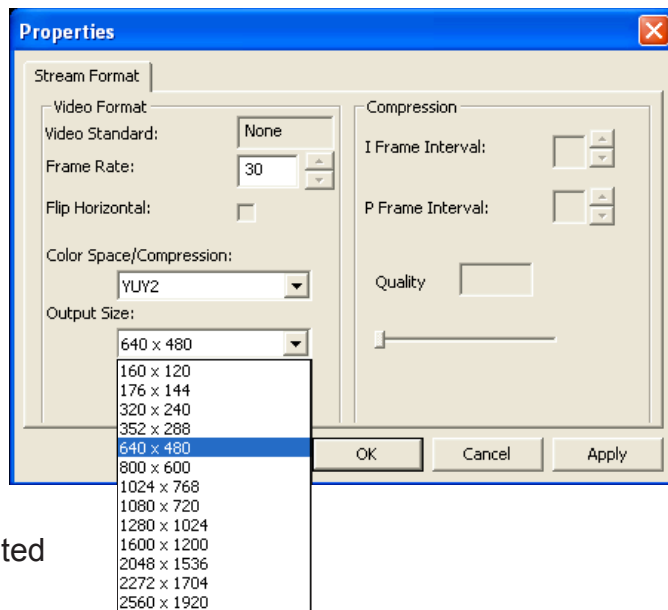
When this option is selected, the Properties box will open. These options (see the screens below) are used to edit the appearance and behavior of the video. Different versions of the software may provide various tabs and selections, but the options are the same. The various tabs will contain options to adjust the appearance of the images (such as color, brightness and hue), image orientation, special effects, framing, face tracking and such. **NOTE:** Depending on the camera model, not all features may be active.





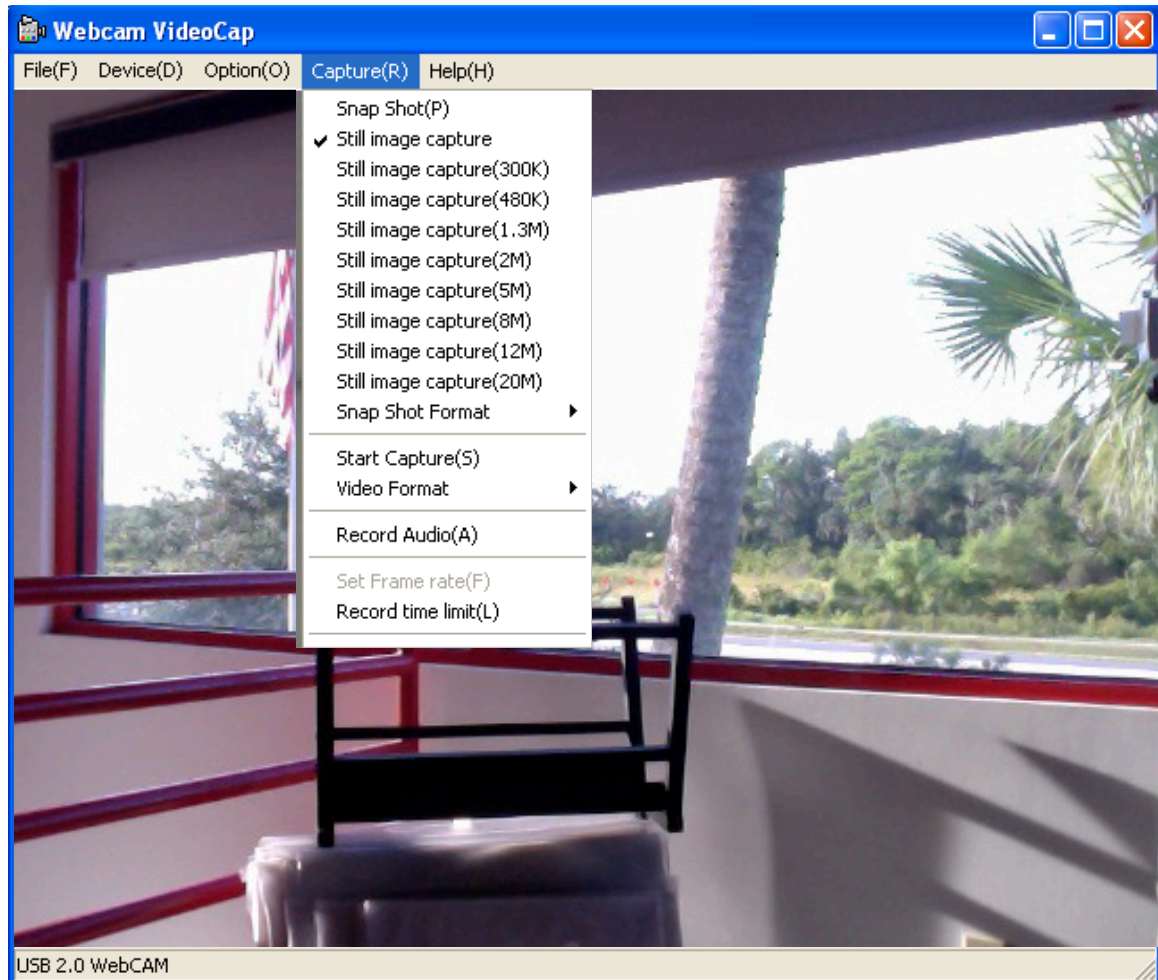
- **Video Capture Pin**  
This option allows for the configuration of the video stream properties. Unlike Filter, this has options such as frame rate, compression and output size settings.

- **Audio Capture Filter**  
This allows the configuration of audio input properties. If no audio is selected in Devices, the options won't be available. Properties of the line-in audio and the master input can be edited for treble, base and volume.



## Capture

This menu presents a list of various capture options. Still frame resolutions can be selected, and the active resolution will be displayed with a check mark. There are options for audio recording, frame rate, video format and maximum length (in time) of video capture. It is where you can configure the settings for taking snapshots, starting video capture and stopping video capture.



## Help

This option provides the version information of the software.



## SPECIFICATIONS

### Standards and Certifications

- USB 2.0
- CE
- RoHS
- WEEE

### Lens

- CMOS Vimicro DSP color sensor; 300k pixels (software enhanced; interpolated to 5.0 M pixels)
- Lens: F2.2 1/9-inch lens with focus ring
- Image focus: 50 mm to infinity

### Image

- Maximum resolution up to 2560 x 1920
- Format: AVI, BMP
- Color depth: 24-bit true color

### General

- Automatic color equalizing, exposure and brightness balance adjustments
- Top-mount snapshot button
- Viewing angle: 55° horizontal
- Built-in compression ratio (BMP)

### Physical

- Base with clip and swivel mount; cable, 1.4 m (4.75 ft.)
- Dimensions: 5.4 x 4.75 x 5 cm (2.125 x 1.875 x 2 in.)
- Weight: 57 g (2 oz.)

### System Requirements


- IBM PC-compatible computer or notebook with USB port
- Pentium 200 or higher CPU
- Windows XP/Vista/7
- 20 MB of HDD space
- CD-ROM drive
- VGA display card for DirectX

# WASTE ELECTRICAL & ELECTRONIC EQUIPMENT

## Disposal of Electric and Electronic Equipment

(applicable in the European Union and other European countries with separate collection systems)

### ENGLISH

This symbol on the product or its packaging indicates that this product shall not be treated as household waste. Instead, it should be taken to an applicable collection point for the recycling of electrical and electronic equipment. By ensuring this product is disposed of correctly, you will help prevent potential negative consequences to the environment and human health, which could otherwise be caused by inappropriate waste handling of this product. If your equipment  contains easily removable batteries or accumulators, dispose of these separately according to your local requirements. The recycling of materials will help to conserve natural resources. For more detailed information about recycling of this product, contact your local city office, your household waste disposal service or the shop where you purchased this product. *In countries outside of the EU:* If you wish to discard this product, contact your local authorities and ask for the correct manner of disposal.

### DEUTSCH

Dieses auf dem Produkt oder der Verpackung angebrachte Symbol zeigt an, dass dieses Produkt nicht mit dem Hausmüll entsorgt werden darf. In Übereinstimmung mit der Richtlinie 2002/96/EG des Europäischen Parlaments und des Rates über Elektro- und Elektronik-Altgeräte (WEEE) darf dieses Elektrogerät nicht im normalen Hausmüll oder dem Gelben Sack entsorgt werden. Wenn Sie dieses Produkt entsorgen möchten, bringen Sie es bitte zur Verkaufsstelle zurück oder zum Recycling-Sammelpunkt Ihrer Gemeinde.

### ESPAÑOL

Este símbolo en el producto o su embalaje indica que el producto no debe tratarse como residuo doméstico. De conformidad con la Directiva 2002/96/CE de la UE sobre residuos de aparatos eléctricos y electrónicos (RAEE), este producto eléctrico no puede desecharse con el resto de residuos no clasificados. Deshágase de este producto devolviéndolo a su punto de venta o a un punto de recolección municipal para su reciclaje.

### FRANÇAIS

Ce symbole sur le produit ou son emballage signifie que ce produit ne doit pas être traité comme un déchet ménager. Conformément à la Directive 2002/96/EC sur les déchets d'équipements électriques et électroniques (DEEE), ce produit électrique ne doit en aucun cas être mis au rebut sous forme de déchet municipal non trié. Veuillez vous débarrasser de ce produit en le renvoyant à son point de vente ou au point de ramassage local dans votre municipalité, à des fins de recyclage.

## ITALIANO

Questo simbolo sul prodotto o sulla relativa confezione indica che il prodotto non va trattato come un rifiuto domestico. In ottemperanza alla Direttiva UE 2002/96/EC sui rifiuti di apparecchiature elettriche ed elettroniche (RAEE), questo prodotto elettrico non deve essere smaltito come rifiuto municipale misto. Si prega di smaltire il prodotto riportandolo al punto vendita o al punto di raccolta municipale locale per un opportuno riciclaggio.

## POLSKI

Jeśli na produkcie lub jego opakowaniu umieszczono ten symbol, wówczas w czasie utylizacji nie wolno wyrzucać tego produktu wraz z odpadami komunalnymi. Zgodnie z Dyrektywą Nr 2002/96/WE w sprawie zużytego sprzętu elektrycznego i elektronicznego (WEEE), niniejszego produktu elektrycznego nie wolno usuwać jako nie posortowanego odpadu komunalnego. Prosimy o usunięcie niniejszego produktu poprzez jego zwrot do punktu zakupu lub oddanie do miejscowego komunalnego punktu zbiórki odpadów przeznaczonych do recyklingu.

## WARRANTY INFORMATION

ENGLISH: For warranty information, go to [www.manhattan-products.com/warranty](http://www.manhattan-products.com/warranty).

DEUTSCH: Garantieinformationen finden Sie unter [www.manhattan-products.com/warranty](http://www.manhattan-products.com/warranty).

ESPAÑOL: Si desea obtener información sobre la garantía, visite [www.manhattan-products.com/warranty](http://www.manhattan-products.com/warranty).

FRANÇAIS: Pour consulter les informations sur la garantie, visitez [www.manhattan-products.com/warranty](http://www.manhattan-products.com/warranty).

POLSKI: Informacje dotyczące gwarancji znajdują się na stronie [www.manhattan-products.com/warranty](http://www.manhattan-products.com/warranty).

ITALIANO: Per informazioni sulla garanzia, accedere a [www.manhattan-products.com/warranty](http://www.manhattan-products.com/warranty).

EN MÉXICO: Póliza de Garantía MANHATTAN — Datos del importador y responsable ante el consumidor IC Intracom México, S.A. de C.V. • Av. Interceptor Poniente # 73, Col. Parque Industrial La Joya, Cuautitlan Izcalli, Estado de México, C.P. 54730, México. • Tel. (55)1500-4500

La presente garantía cubre los siguientes productos contra cualquier defecto de fabricación en sus materiales y mano de obra.

- A. Garantizamos los productos de limpieza, aire comprimido y consumibles, por 60 días a partir de la fecha de entrega, o por el tiempo en que se agote totalmente su contenido por su propia función de uso, lo que suceda primero.
- B. Garantizamos los productos con partes móviles por 3 años.
- C. Garantizamos los demás productos por 5 años (productos sin partes móviles), bajo las siguientes condiciones:
  - 1. Todos los productos a que se refiere esta garantía, ampara su cambio físico, sin ningún cargo para el consumidor.
  - 2. El comercializador no tiene talleres de servicio, debido a que los productos que se garantizan no cuentan con reparaciones, ni refacciones, ya que su garantía es de cambio físico.
  - 3. La garantía cubre exclusivamente aquellas partes, equipos o sub-ensambles que hayan sido instaladas de fábrica y no incluye en ningún caso el equipo adicional o cualesquiera que hayan sido adicionados al mismo por el usuario o distribuidor.

Para hacer efectiva esta garantía bastara con presentar el producto al distribuidor en el domicilio donde fue adquirido o en el domicilio de IC Intracom México, S.A. de C.V., junto con los accesorios contenidos en su empaque, acompañado de su póliza debidamente llenada y sellada por la casa vendedora (indispensable el sello y fecha de compra) donde lo adquirió, o bien, la factura o ticket de compra original donde se mencione claramente el modelo, numero de serie (cuando aplique) y fecha de adquisición. Esta garantía no es válida en los siguientes casos: Si el producto se hubiese utilizado en condiciones distintas a las normales; si el producto no ha sido operado conforme a los instructivos de uso; o si el producto ha sido alterado o tratado de ser reparado por el consumidor o terceras personas.

## REGULATORY STATEMENTS

### FCC Class B

This equipment has been tested and found to comply with the limits for a Class B digital device, pursuant to Part 15 of Federal Communications Commission (FCC) Rules. These limits are designed to provide reasonable protection against harmful interference in a residential installation. This equipment generates, uses and can radiate radio frequency energy, and if not installed and used in accordance with the instructions may cause harmful interference to radio communications. However, there is no guarantee that interference will not occur in a particular installation. If this equipment does cause harmful interference to radio or television reception, which can be determined by turning the equipment off and on, the user is encouraged to try to correct the interference by one or more of the following measures:

- Reorient or relocate the receiving antenna.
- Increase the separation between the equipment and the receiver.
- Connect the equipment to an outlet on a circuit different from the receiver.
- Consult the dealer or an experienced radio/TV technician for help.

## CE / R&TTE

### ENGLISH

This device complies with the requirements of the R&TTE Directive 1999/5/EC.

### DEUTSCH

Dieses Gerät entspricht der Direktive R&TTE Direktive 1999/5/EC.

### ESPAÑOL

Este dispositivo cumple con los requerimientos de la Directiva R&TTE 1999/5/EC.

### FRANÇAIS

Cet appareil satisfait aux exigences de la directive R&TTE 1999/5/CE.

### POLSKI

Urządzenie spełnia wymagania dyrektywy R&TTE 1999/5/EC.

### ITALIANO

Questo dispositivo è conforme alla Direttiva 1999/5/EC R&TTE.



MANHATTAN® offers a complete line of PC Components, Peripherals, Cables and Accessories. Ask your local computer dealer for more information or visit [www.manhattan-products.com](http://www.manhattan-products.com).

All products mentioned are trademarks or registered trademarks of their respective owners.

---

MANHATTAN® bietet ein vollständiges Sortiment an PC-Komponenten, Peripherie, Kabel und Zubehör. Weitere Informationen erhalten Sie von Ihrem Händler oder auf [www.manhattan-products.com](http://www.manhattan-products.com).

Alle genannten Produkt- oder Firmennamen sind eingetragene Marken oder Marken der jeweiligen Firmen.

---

MANHATTAN® ofrece una línea completa Componentes para PC, Periféricos, Cables y Accesorios. Consulte a su distribuidor local para más información ó visitenos [www.manhattan-products.com](http://www.manhattan-products.com).

Todos los productos mencionados son marcas comerciales o marcas registradas de sus respectivos propietarios.

---

MANHATTAN® offre un assortiment complet de composants de PC, des périphériques, des câbles et des accessoires [www.manhattan-products.com](http://www.manhattan-products.com).

Tous les produits mentionnés sont des marques commerciales ou des marques déposées de leurs propriétaires respectifs.

---

MANHATTAN® to kompletna linia Komponentów PC, Peryferiów, Kabli oraz Akcesoriów. Poproś lokalnego dealera o więcej informacji lub odwiedź stronę [www.manhattan-products.com.pl](http://www.manhattan-products.com.pl).

Wszystkie nazwy handlowe i towarów są nazwami i znakami towarowymi zastrzeżonymi odpowiednich firm odnośnych właścicieli.

---

MANHATTAN® offre una linea completa di componenti per PC, periferiche, cavi e accessori. Chiedi maggiori informazioni al tuo rivenditore di computer o visita il sito [www.manhattan-products.com](http://www.manhattan-products.com).

Tutti i prodotti sopracitati sono marchi di fabbrica o marchi registrati depositati dai proprietari.



**MANHATTAN**<sup>TM</sup>  
BRINGING COMPUTERS TO LIFE

Copyright © MANHATTAN