

Quick Start

Digital Satellite Receiver

- Support of SD (MPEG2), DVB-S system
- Standard resolution video output - SCART
- Compatible with Diseqc 1.0, 1.1, 1.2, and USALS
- Electronic Program Guide - EPG
- Multilingual Menu, including English
- Video Games

Remote controller



Button	Function
POWER	Switch your receiver on from standby mode.
MUTE	Enable or disable the audio.
Zifferntasten	Select channel or enter programming parameters.
TV/R	Switch receiver between TV and Radio mode.
LAST	Switch to the previous channel.
MENU	Display the Main Menu on the screen, or return to the previous menu or status.
EXIT	Cancel the user selection and return to the viewing mode from a menu.
◀/▶	Adjust volume level or move cursor left or right in the menu.
▲/▼	Change channel or move cursor up or down in the menu.
OK	Display channel list on screen. Select an item in menu.
PG- / PG+	Change cursor position on previous/next page.
AUDIO	Audio channels setup.
MODE	Video mode setup.
EPG	Display the Electronic Program Guide on screen.
FAVOR	Set receiver to the favourite list mode, display actual favourite channel list.
RED, GREEN, YELLOW, BLUE	Colour buttons (according function descriptions on screen)
INFO	Display information bar of current service.
SLEEP	Adjust time of sleep function (turns off receiver after selected time).
SUB-T	Subtitle setup.
TEXT	Show teletext information of the current channel.

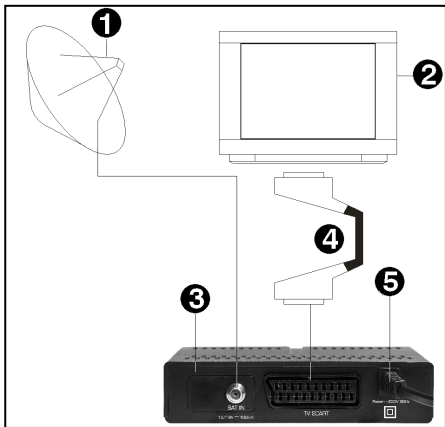
Basic connection



After purchasing receiver, unpack it and check to make sure that all of the following items are included in the packaging:

- Receiver
- Remote controller
- Quick Start manual
- Batteries - 2x AAA (optional)

To install the batteries in the remote control, remove the flap protecting the battery compartment if inside the chamber there are used batteries, they must be removed. Then put new batteries inside. When installing the battery, pay special attention on the polarity - the direction of insertion of both batteries. The correct polarity of batteries is drawn on a description inside the battery compartment in the remote control. After installing the batteries, place protecting flap on its original position.



Next, connect cable from LNB/ANTENNA (1 on picture) to receiver's (3) SAT IN connector. Using SCART cable (4) connect receiver with TV Set (2). Finally, at the end connect main cord (5) to main socket.

Turn on the TV Set. After while on TV Set screen You should see receiver's OSD. If TV Set not display receiver's OSD, probably signal source is set wrong in TV. Check TV Set documentation for information how to change signal source.

Easy installation

Generally, once the receiver is switched on, it is ready to play channels from default channel list.

If after turning on You can see only receiver's menu, and when You try to push **MENU** or **EXIT** button, "No channels!" information appears, it means that channel list has been erased. There are two ways to create new channel list:

- Restore default channel list, or
- Scan Your own channel list

Restore default channel list

To restore default channel list, explore the menu with ▲/▼ buttons, and select **Tools** menu. Press **OK** to enter. You may be asked about password (default is 0000 – enter using numeric buttons). Using ▲/▼ buttons select **Factory Setting** option and press **OK**. Use ◀/▶ buttons to move cursor to "Yes" and again confirm by **OK** button. After a while, reboot receiver using **POWER** button.

If after above settings, channels are still not played, only "No Signal!" information appears on screen, go to next chapter, where You can find how to configure Your satellite installation.

Configure Your satellite installation

To configure satellite installation, explore the menu with ▲/▼ buttons, and select **Installation** menu. Press **OK** to enter. You may be asked about password (default is 0000 – enter using numeric buttons). Using ▲/▼ buttons select **Antenna Connection** and press **OK**. This menu contain only one function – LNB. Using ◀/▶ buttons, You can select what kind of antenna installation is connected to receiver – fixed (in most situations) or motor (special dish positioning system – for this installation, refer to motor instruction manual). Select Your installation type and press **MENU** to back to **Installation**.

Now using ▲/▼ buttons select **Satellite List** and press **OK**. In this menu, using ▲/▼ and **OK** buttons You can define which satellites are available in Your installation. Next, press **MENU** to back to **Installation**.

If Your installation receive signal from more than one satellite, use ▲/▼ buttons to select **Antenna Setup** and press **OK**. In **satellite** function use ◀/▶ buttons to choose satellite and in DiSEqC1.0 function You can assign selected satellite to corresponding DiSEqC switch input. Use **MENU** to back to **Installation**. Now Your satellite installation should be finally configured and ready to receive connected signal.

Scan Your own channel list

After satellite installation configure, You can create Your own channel list.

If You want to erase all currently existing channels, explore the menu with ▲/▼ buttons, and select **Edit Channel** menu. Press **OK** to enter. You may be asked about password (default is 0000 – enter using numeric buttons). Using ▲/▼ buttons select **Delete All** and press **OK**. Use ◀/▶ buttons to move cursor to "Yes" and again confirm by **OK** button. After a while, channel list will be empty.

Now, explore the menu with ▲/▼ buttons, and select **Installation** menu. Press **OK** to enter. You may be asked about password (default is 0000 – enter using numeric buttons). Using ▲/▼ buttons select **Multi Satellite Search** and press **OK**. Next, using ▲/▼ buttons select **Search** and press **OK**. Receiver start scanning all selected previously in **Satellite List** function satellites. Please, be noted his procedure may takes few minutes.

If after above procedures, Your receiver still cannot play channels, it is highly recommended to contact with Your local professional installer or seller.

Menu structure and functions description

Menu/Submenu

Function

Edit Channel

This menu enables to manage channels on channel lists.

TV Channel List

Manage list of TV channels.

Radio Channel List

Manage list of Radio channels.

Delete All

Delete all channels from all channel lists.

Installation

This menu enables to scan channels and setup antenna.

Antenna Connection

Defines type of antenna connected to receiver.

Satellite List

Enables to choose satellites from list for scanning issues.

Antenna Setup

Enables to configure antenna / LNB parameters.

Single Satellite Search

Scan channels of one satellite (selected from Satellite List).

Multi Satellite Search

Scan channels of all satellites selected in Satellite List.

TP List

Manage list of transponders for every satellite, enables to scan channels from desirable transponders.

System Setup

This menu enables to set up receiver's user interface functions.

Language

Change language of OSD and audio tracks.

TV System

Change screen settings - PAL/NTSC , 16:9/4:3, RGB/CVBS.

Local Time Settings

Change time settings – time zone, manually set time.

Timer Setting

Enables to plan events in future - wake up receiver on specified channel or remind by message display.

Parental Lock

Lock access to menu and specified channels.

OSD Setting

Change transparency of OSD, choose subtitle mode.

Favourite

Enables to rename favourite channels groups.

Other

Setup all other settings – power for LNB, channel play type and beeper (Beeper enables sound in Antenna Setup menu very helpful for installation issues).

Tools

This menu enables to manage receiver's software.

Information

Display information about hardware and software version of receiver.

Factory Settings

Recall standard settings of all receiver's functions, delete old channels.

S/W Upgrade by OTA

Enables to upgrade receiver's software using software from satellite stream data (optional).

Game

This menu contain games.

Troubleshooting

Look through the trouble shooting information. Some simple checks or minor adjustment of the unit on your part may help resolve the problems. If the problems prove to be beyond your capability, you had better hand it over to a professional qualified technician.

Troubles	Possible Causes	Suggested Solutions
No power	The power cord has not been well connected	Plug the power cord into the outlet tightly and turn on the power; if no power still, turn off the power again, and turn it on in 5-10 minutes.
Cannot scan programs	The antenna is not adjusted well	Adjust the antenna
	Parameter input incorrectly	Input Satellite, Frequency, SR, Polarization parameter correctly
No picture	Output cord connect incorrectly	Connect the output cord correctly
	The video output mode of the unit is different from the mode of monitor	Reset the working mode
No color	Output cord connect incorrectly	Connect the output cord correctly
	The video output system of the unit is different from the mode of monitor	Reset the working system
The remote control fails to work	Batteries incorrectly installed	Install the battery correctly
	Batteries exhausted	Replace the battery
	Beyond the effective operation range	Operate within a normal range
	The remote sensor is pointed to by bright light	Place the unit elsewhere for a change
Audio sound and subtitle language are not the chosen items	Has not chosen the right sound channel	Press the Audio button to shift the channel
No sound at all	The unit is in a mute status	Cancel the mute
	Volume set at a too low level	Augment the volume
	Cable connected incorrectly	Connect the cable correctly
No sound by chance	There might be a short circuit	Correct the output-cable connection, and turn on it.
Serious distortion or cannot receive signal normally	Too much interferential signal	Adjust the antenna.

Safety precautions

CAUTION:



Warning: The lightning flash with arrowhead symbol, within an equilateral triangle, is intended to alert the user to "dangerous voltage" and to prevent from a risk of electric shock.



Warning: To reduce the risk of electric shock, don't open the cabinet. Refer servicing to qualified personnel only.



Warning: The exclamation point within an equilateral triangle is intended to alert the user to important operating and maintenance (servicing).

Warning: Do not use this STB where contact with or immersion in water is a possibility. Do not use near flower vase, washbowls, kitchen sinks, laundry tubs, swimming pools, etc.

Warning: Do not put the candle or lamp stand on the cabinet; otherwise, there is the danger of fire.

Warning: The unit should be connected to a power supply only of the type described in the operating instructions or as marked on the unit. If you are not sure of the type of power supply (for example, 120 or 230 V) to your home, consult your local dealer or local power company.

Warning: This product install diodes. Do not open the cabinet or touch any parts in the inner mechanism. Consult your local dealer for technical service if the opening is required.

Note: To ensure proper use of this product, please read this User manual carefully and retain for further reference.

Note: This product install diodes. Do not open the cabinet to avoid the unit direct exposure to radiation.

Unit Cleaning: After the unit power is turned off, you can clean the cabinet, panel and remote control with a soft cloth lightly moistened with a mild detergent solution.

Attachments: Never add any attachments and/or equipment without the manufacturer consent; as such additions may result in the risk of fire, electric shock, or other personal injury.

Locating: Slots and openings in the cabinet are provided for ventilation to protect it from overheating. Do not block these openings or allow them to be blocked by placing the STB on a bed, sofa, or other similar surface, nor should it be placed over a radiator or heat register.

Power-Cord Protection: Place the power-supply cord out of the way, where it will not be walked on. Please take special attentions to cords at plugs, convenience receptacles, and the point where they exit from the unit.

Object and Liquid Entry: Never put objects of any kind into this STB through openings, as they may touch dangerous voltage points or short-out parts that could result in a fire or electric shock. Never spill any liquid on the STB.

Note: Moisture may be formed on the lens when the unit is suddenly moved from a cold environment or an air-condition room to a warm place or immediately after a heater has been turned on or in a steamy or very humid room. If the moisture forms inside the unit, it may not operate properly. To correct this problem, turn on the power and wait about two hours for the moisture to evaporate.

Parts Replacement: When the unit parts need to be replaced, user should make sure the service technician use the replacement parts specified by the manufacturer or having the same characteristics as the original part. Unauthorized replacement may put the unit in the risk of fire, electric shock or other hazards.

Safety Check: After all the maintenances and repairs are done, user is required to request the service technician to conduct the overall safety check to ensure the machine is in the proper condition.

Environment protection



Attention!

Your product is marked with this symbol. It means that used electrical and electronic products should not be mixed with general household waste. There is a separate collection system for these products.

Information on Disposal for Users (private households) in the European Union. Used electrical and electronic equipment must be treated separately and in accordance with legislation that requires proper treatment, recovery and recycling of used electrical and electronic equipment.

Following the implementation by member states, private households within the EU states may return their used electrical and electronic equipment to designated collection facilities free of charge*. In some countries* your local retailer may also take back your old product free of charge if you purchase a similar new one. *) Please contact your local authority for further details.

If you used electrical or electronic equipment has batteries or accumulators, please dispose of these separately beforehand according to local requirements.

By disposing of this product correctly you will help ensure that the waste undergoes the necessary treatment, recovery and recycling and thus prevent potential negative effects on the environment and human health which could otherwise arise due to inappropriate waste handling.

Information on Disposal for Business Users

In the European Union. If the product is used for business purposes and you want to discard it: Please contact your dealer who will inform you about the take-back of the product. You might be charged for the costs arising from take-back and recycling. Small products (and small amounts) might be taken back by your local collection facilities,

In other Countries outside the EU. If you wish to discard of this product, please contact your local authorities and ask for the correct method of disposal.

Declaration of conformity

The manufacturer herewith declares the conformity of that product with the following directives and standards:

Low Voltage Directive 2006/95/EC

EN 60065:2002+A1:2006+A11:2008

EMC Directive 2004/108/EC

EN 55 013:2001+A1:2003+A2:2006

EN 55 020:2007

EN 61 000-3-2:2006+A1:2009+A2:2009

EN 61 000-3-3:2008

Model: Digital Satellite Receiver DVB-S

Technical specification

Input frequency range:	950-2150MHz
RF Input connector:	IEC169-24, Female
Input impedance:	75Ω
Waveform:	QPSK (SCPC, MCPC)
Video decoding:	MPEG2 (MP@ ML)
Video resolution:	PAL 576, NTSC 480
Audio decoding:	MPEG-1, 2 Layer 1 & 2
Audio track:	Stereo, Left, Right
Video/Audio connector:	SCART
Rated voltage:	~ 230V, 50Hz
Rated consumption:	5 W
Standby consumption:	< 1 W
Operating temperature:	5-40°C
Operating humidity:	<95%
Net weight:	~0,3 kg
Receiver measurements:	130 mm ×103 mm ×33 mm

Weight and dimensions are not absolutely exact values. Specifications are subject to change (by manufacturer) without notice.