



PlasmaSync® 50MP1 Multimedia Presentation Series

The superior 50" XGA plasma monitor optimized for professional multimedia applications



PLASMASYNC 50MP1 – THE 50" XGA PLASMA MONITOR

SUPERIOR FEATURES EQUAL SUPERIOR PERFORMANCE

The PlasmaSync 50MP1 is designed specifically for professional multimedia applications and is packed with features and capabilities that provide superior performance to meet all of your key application needs:

Superior Resolution

The PlasmaSync 50MP1 provides the best high resolution capabilities of any 50" plasma monitor available today. At 1365x768 the 50MP1's native panel resolution meets the industry standard for true 16:9 Wide XGA computer graphics. This enables it to display more information on-screen, which is a key benefit for your computer-based applications. Plus, its screen aspect ratio and proportionally true 16:9 resolution with square pixels naturally reproduces wide screen HDTV and digital video content. With over 1 million pixels and an industry-standard native mode, the 50MP1 provides a superior path to the future of wide screen display formats and signal standards.

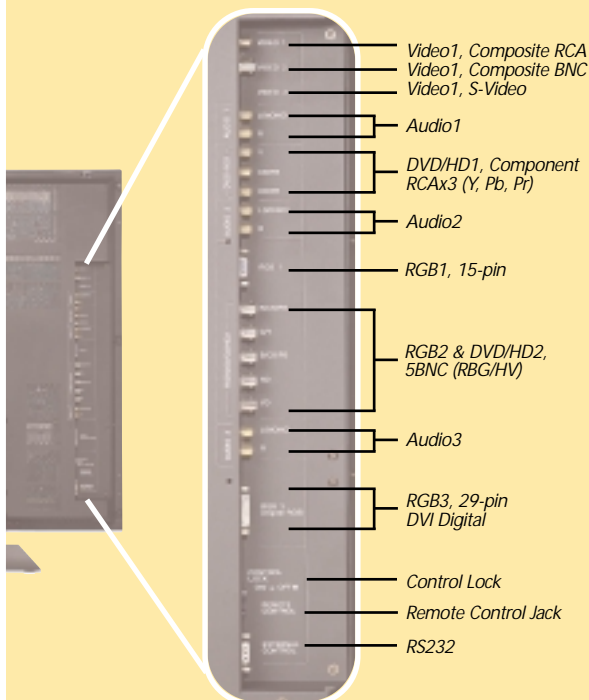


Superior Image Quality

The PlasmaSync 50MP1 delivers the outstanding image quality you expect from NEC. Its cutting edge plasma display technology produces stunningly bright, sharp, clear screen images that are immune from geometric distortion and readable through a full 160° horizontal and vertical viewing angle. The 50MP1 also includes NEC's exclusive Capsulated Color Filter™ Technology that provides extremely realistic and saturated colors as well as enhanced contrast.

The PlasmaSync 50MP1 delivers enhanced image quality from any input source. NEC's Advanced AccuBlend™ scan conversion provides precise interpolation of computer-based information from any resolution from VGA to UXGA in both 16:9 and 4:3 aspect ratios. This enables the 50MP1 to display clear, readable images even in non-native resolutions. In addition, motion-compensated 3D scan conversion provides smooth, lifelike display of video sources and a 3-2 pull down converter provides superb display of source content originally recorded in 24 frame/second film.

Superior Compatibility and Connectivity



Being optimized for multimedia means that the 50MP1 can connect to and display signals from virtually any input source, whether it is computer, conventional video or high-definition video. With broad compatibility it can handle virtually any laptop used in the conference room as readily as it will display workstation sources in CAD and control room environments. It can also accept video signals ranging from composite through S-Video to component as well as the emerging high definition and DTV standards. And with eight separate inputs it can accommodate virtually any source equipment that you would want to connect.

Comprehensive input panel includes connections for up to 8 different sources including a 29-pin DVI digital input connector and three assignable audio inputs.

SOURCE	INPUT OPTIONS	SIGNAL STANDARD
RGB	15-pin mini D-Sub	VGA – UXGA Computer, Component Video
RGB	5 BNC (RGB/HV)	VGA-XVGA Computer, Component Video, HDTV
Digital RGB	29-pin DVI-D	VGA – UXGA Computer
Composite Video	RCA BNC	NTSC (3.58, 4.43), PAL, PAL60, SECAM
S-Video	4-pin DIN	SVHS
DTV/HDTV	3X RCA BNC	480i, 480p, 540p, 625i, 625p, 720p, 1035i, 1080i
Audio	3X Stereo RCA	Assignable via OSM
Control	9-pin	RS232C

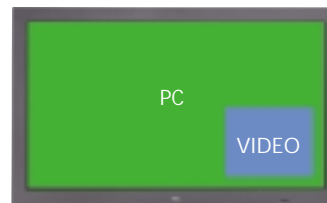
OPTIMIZED FOR MULTIMEDIA PRESENTATION.



Built-in tools enhance presentation effectiveness

Because the PlasmaSync 50MP1 is designed as a solution for business communication applications it offers capabilities you cannot find in other plasma monitors. NEC has included features and functionality in the 50MP1 that enable it to deliver unique benefits for professional presentation uses. And with only 26 db of fan noise, it is remarkably quiet so you do not have to compete with fan noise to make yourself heard in a meeting.

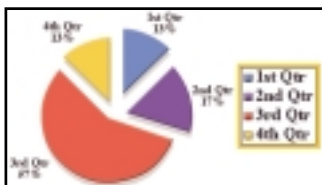
NEC's unique Split Screen capability allows simultaneous display of a computer and video sources. Choose from up to 8 different configurations with a simple touch of a button on the remote control.



Split-Screen Display

The PlasmaSync 50MP1 Split Screen allows simultaneous display of multiple input sources. More than a simple picture-in-picture, Split Screen lets you position computer and video images in different configurations around the screen to support videoconferencing, workgroup collaboration and host of other multi-tasking uses. Split Screen also gives you a solution for displaying 1024x768 XGA computer sources by allowing you to display them in their standard 4:3 aspect ratio.

With Digital Zoom you can select a portion of the screen image and enlarge it up to 9 times with the touch of a button on the remote control.



Digital Zoom

With its Digital Zoom the 50MP1 allows you to select a portion of the screen and magnify it up to nine times to highlight information or emphasize a point. This is a presentation tool you won't find on any other plasma monitor.

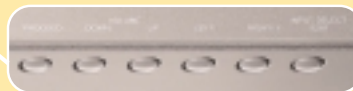
Comprehensive control options



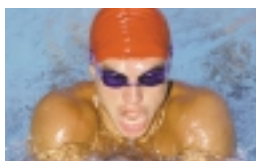
Wired/wireless hand-held remote control provides access to all monitor functions via an intuitive on-screen menu system.



Front-bezel controls provide convenient access to monitor functions in the event that the remote is lost or stolen and lock-out prevents unauthorized manipulation of the monitor settings.



The PlasmaSync 50MP1 offers a full set of control options. A comprehensive on-screen menu system provides complete control of all monitor functions and is accessible from a handheld remote or convenient front-bezel controls. On-screen menus are easy to navigate and intuitive to use. Plus, if you wish to set-up and operate the 50MP1 from a PC or a remote location, complete RS232 control is available for each monitor function.



Inverse Mode inverts red, green and blue color values to precisely even wear on phosphor and remove the perceptible effects of image retention.

AccuShield™ Phosphor Protection System

NEC's exclusive AccuShield Phosphor Protection System provides three operating modes that can help prevent phosphor burn or minimize its perceptible effects if it does. When used in conjunction with simple operating guidelines, AccuShield's PLE Brightness Limiter, Image Orbiter and Inverse RGB Mode can extend the usable life of the monitor.



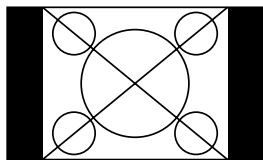
Optional external speakers can be attached to the monitor to provide a seamless audio option for wall-mounted installations.

Powerful Stereo Audio

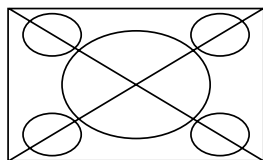
The PlasmaSync 50MP1 includes powerful audio capabilities with an internal 7-Watt stereo amplifier and optional external speakers. External speaker terminals and three assignable audio inputs give you the flexibility to connect to available room sound systems and source audio if you need more power than the internal amplifier provides.

Aspect Ratio Manipulation

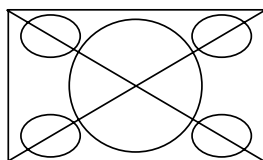
The PlasmaSync 50MP1 has built-in display modes that allow you to adapt 4:3 content to the monitor's wide screen format. A simple touch of a button on the remote control lets you change the format of your video image to any one these four modes and either Normal or Full mode for computer images.



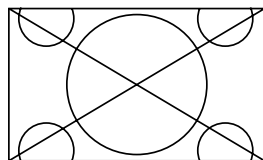
Normal
Your image is displayed in a 4:3 aspect ratio with vertical bars at the edges



Full
The image is expanded horizontally at different to fill the entire width of the screen.



Stadium
The image is expanded horizontally at different proportions to fill the entire screen while maintaining the original geometry in the center of the screen.



Zoom
The image is expanded horizontally and vertically while maintaining its original proportions.

Superior Service and Support

The PlasmaSync 50MP1 is supported by NEC Technologies industry-leading service and support programs. It comes with a standard 1-year manufacturer's warranty plus an extended warranty option that provides two additional years of coverage and is available from your authorized NEC Visual Systems Division dealer.

A new way to present, communicate and collaborate

The PlasmaSync 50MP1 is designed specifically for professional multimedia and business communications applications including:

Conference room presentation

Boardroom A/V presentation systems

Videoconferencing

Training

Broadcast production/editing/playback

With superior high-resolution support, the 50MP1 is also ideal for:

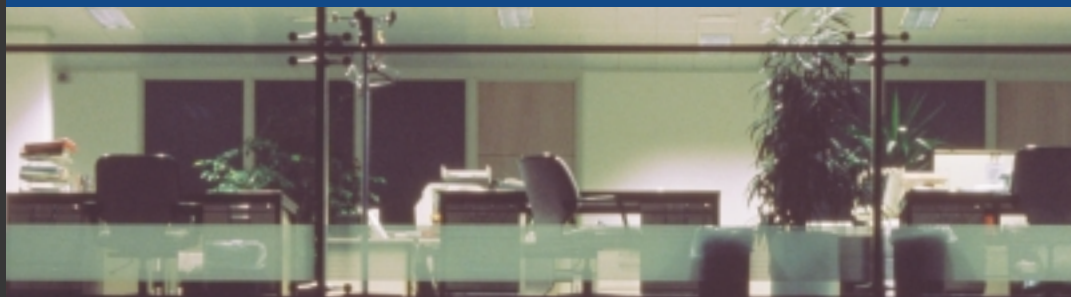
Control rooms

Network operations and monitoring facilities

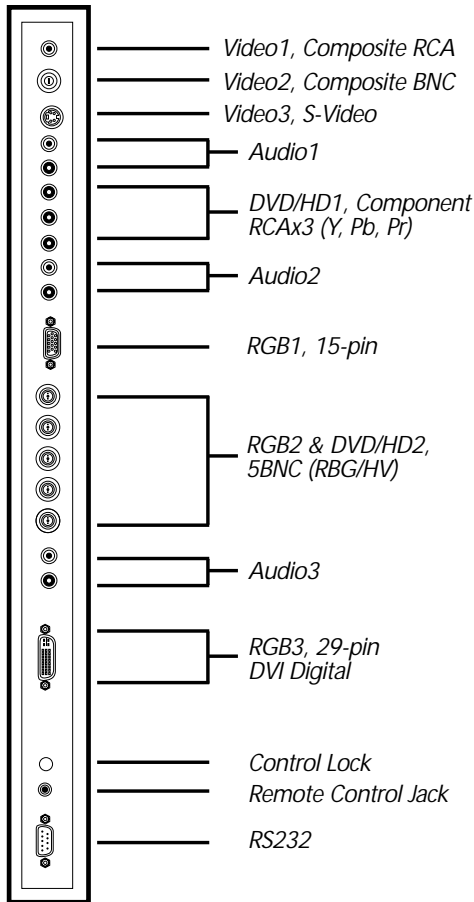
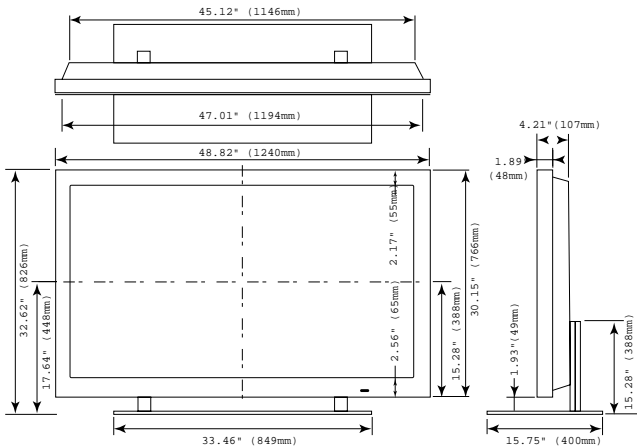
Visualization, design and presentation of content created in CAD applications

Rental & staging for tradeshow, meetings and events

NEC's PlasmaSync MP Series monitors revolutionize professional multimedia presentation and business communications with solutions that offer superior form and function. With big, bright, high-resolution images that can be placed virtually anywhere they add forward-thinking technological sophistication to any business environment.



PlasmaSync® 50MP1



For more information, call (800) NEC-INFO or visit www.plasma.nectech.com

NEC Technologies and the NEC logos are registered trademarks of NEC Technologies, Inc. All products and technologies mentioned are trademarks or registered trademarks of their respective manufacturers.

NEC Technologies, Inc.
1250 N. Arlington Heights Rd., Suite 500
Itasca, IL 60143-1248
www.nectech.com

Specifications

Model Number	PX-50XM1A
Diagonal Screen Size	50"
Screen Aspect Ratio	16 to 9
Active Screen Area	1106 x 622 mm
Native Pixel Resolution	1365 vertical dots x 768 horizontal rows
Pixel Pitch	.81mm square
Contrast Ratio (set)	580 to 1
Capsulated Color Filter	Yes
Output color	256 RGB levels, 16.7 million colors
Viewing Angle	160 degrees
Horizontal Frequency Range	15.6 to 93.8 kHz auto, step scan
Vertical Frequency Range	50 to 120 Hz auto, step scan
PC Signal Compatibility	VGA 640x480 @ 60,72,75,85,100, 120 Hz SVGA 800x600 @ 56, 60, 72,75,85,100,120 Hz XGA 1024x768 @ 60,70,75, 85, 100 Hz SXGA 1280x1024 @ 60, 75, 85 Hz UXGA 1600x1200 @ 60, 65, 70, 75 Hz WideVGA 848x480, 852 x 480 @ 60Hz WideSVGA 1024x600 @ 60Hz WideXGA 1360 x 765 @ 60Hz
Workstation Compatibility	EWS4800 1280x1024 HP 1280x1024 Sun 1152x900, 1280x1024 SGI 1024x768, 1280x1024
Macintosh Compatibility	640x480, 832x624, 1024x768, 1152x870
Video Signal Compatibility	NTSC, PAL, SECAM, 3.58/4.43 NTSC
HD Video Signal Compatibility	480p 480i, 720p, 525p, 525i, 540p, 625p, 625i, 720p,1035i, 1080i
Input Terminals	RGB 1 (analog) 15-pin mini D-sub RGB 2 (analog) 5 BNC (RGB/HV) RGB 3 (digital) 29-pin DVI (digital only) Video 1 Composite RCA x 1 Video 2 Composite BNC x 1 Video 3 S-Video 4-Pin DIN HD Video 1 1 set RCA Component (Y,Pb,Pr/Y,Cb,Cr) HD Video 2 1 set BNC Component (Y,Pb,Pr/Y,Cb,Cr)
Audio	3 sets RCA stereo + external speaker jacks
Audio	Internal amplifier, 7W x 2 output power
External Control	9-pin mini D-Sub, RS232
User Controls	Direct Access Power on/off, input selection, OSM access, (Control Lock Switch located on input panel) Remote Control Power on/off, input select, volume, mute, wide, display, off-timer, OSM control, cursor, pointer, zoom, split screen, auto, select OSM Contrast, brightness, sharpness, color, tint, color temperature, picture mode, noise reduction, bass, treble, balance, vertical position, horizontal position, fine picture, picture adjust, auto picture, power management, RGB select, BNC select, HD select, OSM adjustment, gray level, PLE, reset, frequency, language, color system
Plug & Play	DDC1, DDC2B (RGB3 is DDC2B only)
Power Requirements	120V 50/60 Hz
Power Consumption	595 W Typical, 5.9 Amp Maximum
Dimensions (WxHxD) - w/out base	1240 x 766 x 107mm, 48.8 x 30.2 x 4.2 inches
Weight	46 kg, 101.4 lbs. (without tabletop stand)
Environmental Considerations	Operating Temperature 32 - 95 degrees F Operating Humidity 20 - 80% Operating Altitude 0 - 6230 feet Storage Temperature 14 - 122 degrees F Storage Humidity 10 - 90% Storage Altitude 0 to 9840 feet
Warranty	1 Year Parts & Labor Standard
Regulatory	FCC Class A, UL1950, CSA950
Included Accessories	AC Power Cord, User Manual, Remote Control, Remote Control Cable, 15-pin RGB Cable, Batteries
Optional Accessories	Tabletop Stand PX-50XM1U-ST Attachable Speakers PX-50XM1U-S1 Fixed Wall Mount FWMK Adjustable Depth Fixed Wall Mount FWMKPC Tilt Wall Mount TWMK Adjustable Depth Fixed Wall Mount TWMKPC Ceiling Mount CMK Adjustable Depth Ceiling Mount CMKPC

Specifications subject to change without notice.