

# EZN Series Outdoor IR Bullet IP Camera

10x Optical Zoom, Auto Focus, True Day/Night, WDR, IP66

---

## *Quick Installation Guide*



Copyright © EverFocus Electronics Corp,

Release Date: March, 2014

## 1. Physical Description

The EZN series bullet IP Camera features 10x optical zoom lens and provides Auto Focus function. The series comes in two models: **EZN3261 / 3361**.

Model Name	Megapixel	10x Optical Zoom	Auto Focus	WDR
EZN3261	2 MP	Yes	Yes	Yes
EZN3361	3 MP	Yes	Yes	Yes



No.	Name	Description
1	<b>Light Sensor</b>	Detects lights.
2	<b>IR LEDs</b>	12 IR LEDs for infrared illumination in night vision applications.
3	<b>Video Test Output</b>	Connects to a handheld test monitor for adjusting camera focus / zoom / angles.
4	<b>5-Axis Button</b>	For adjusting camera focus / zoom or restoring the camera to factory default. See <i>5-Axis Button</i> later in this <i>Quick Installation</i>
5	<b>Micro SD/SDHC Slot</b>	For inserting a micro SD / SDHC card.
6	<b>Lens</b>	10x optical zoom, auto focus, DC Iris, F1.8-360C.
7	<b>Camera Cover</b>	Remove the cover for using the 5-Axis Button, inserting a micro SD card or connecting to a handheld test monitor.
8	<b>Sunshield</b>	Protect the camera from the direct rays of the sun.

## System Requirement

Before installing, please check that your computer meets these system requirements.

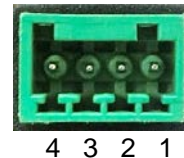
- Operating System: Microsoft Windows XP / Vista (32-bit) / 7 (32-bit)
- Microsoft Internet Explorer 7 or above

## Cables

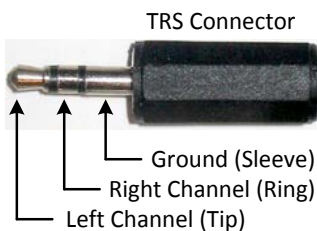
The Cables provide connections for Network, power, audio input / output and alarm input / output. Note that the audio-in cable features a line-in 3.5mm jack (TRS). Be sure to prepare microphones with TRS connector (see TRS Connector image below). Also, microphones with a (built-in) amplifier and external power supply are required.



### Pin Assignment for Alarm IO



- Pin 1: Alarm GND
- Pin 2: Alarm In
- Pin3: Alarm Out-
- Pin4: Alarm Out+



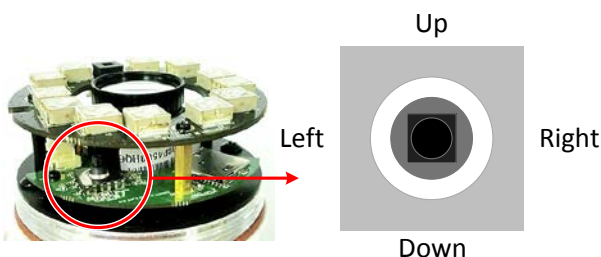
To activate the Audio function, the **Enable Audio** must be checked. See *Audio Settings* in 7.2.1 Streaming and Audio in the User's Manual.



## 5-Axis Button

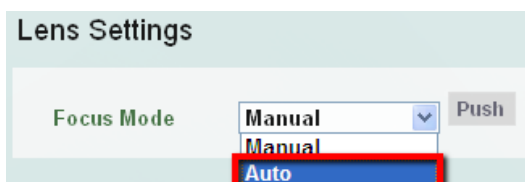
The 5-Axis Button is designed for manually adjusting zoom and focus, and restoring to factory default. You can also use the button to **auto focus**.

**Note:** If you have already inserted a desiccant bag inside the module, close the cover immediately in case of reducing the absorption capacity of the desiccant bag inside the camera. To replace a new desiccant bag, see **Step3** in *Inserting a Micro SD Card* later in this *Quick Installation Guide*.



- Focus:** Push the button left or right.
- Zoom:** Push the button up or down.
- Auto Focus:** Press the button once.
- Reset:** Press and hold the button for 5 seconds.

Note that the camera will automatically adjust focus every time you push the button up or down to zoom if you select **Auto** from the Focus Mode (see 7.2.3 Camera in the User's Manual).



## 2. Installation

### Packing List

- Camera x 1
- Quick Mounting Ring x 1
- RJ-45 Connector x 1
- Desiccant Bag x 1
- Mounting Kit x 1
  - Long Screw x 4 (for attaching the Quick Mounting Ring to the mounting surface)
  - Short Screw x 4 (for connecting the Camera Base to the Quick Mount Ring)
  - Screw Anchor x 4 (in conjunction with Long Screw)
  - Hexagon Key x 1 (for adjusting the camera position)
  - Hexagon Wrench x 1 (for screwing the set screw)
  - Plug x 1 (inserting to the Quick Mounting Ring for through-the-wall installation)
- 4-Pin Terminal Block x 1
- Test-Out Cable x 1
- Software CD x 1
- Quick Installation Guide x 1

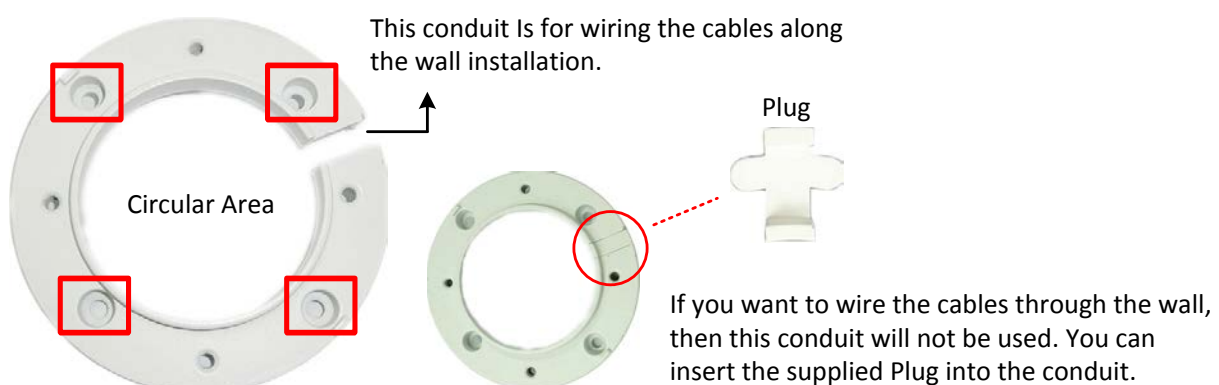
#### Note:

1. Equipment configurations and supplied accessories vary by country. Please consult your local EverFocus office or agents for more information. Please also keep the shipping carton for possible future use.
2. Contact the shipper if any items appear to have been damaged in the shipping process.

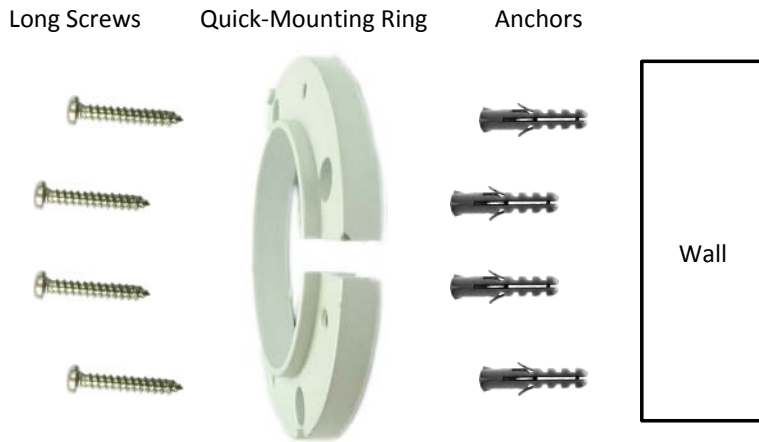
### Basic Installation

This installation guide provides the basic instructions on mounting / wiring the camera. For details, please refer to the *User's Manual* in the software CD.

1. Before screwing the camera to the wall, drill four holes on the wall according to the hole-positions on the supplied Quick-Mounting Ring. If you wish to run the wires through the wall, drill another hole in the middle of the circular area within the Quick-Mounting Ring.



- Push the four supplied Anchors into the four holes on the wall. Place the Quick-Mounting Ring against the anchoring surface so that the holes line up. Screw the Quick-Mounting Ring to the wall using the supplied Long Screws.



- Screw the Camera Base to the Quick-Mounting Ring using the supplied four Short Screws.



You can wire the cables from the side of the camera or through the wall.



Wire the cables from the side of the camera



Wire the cables through the wall

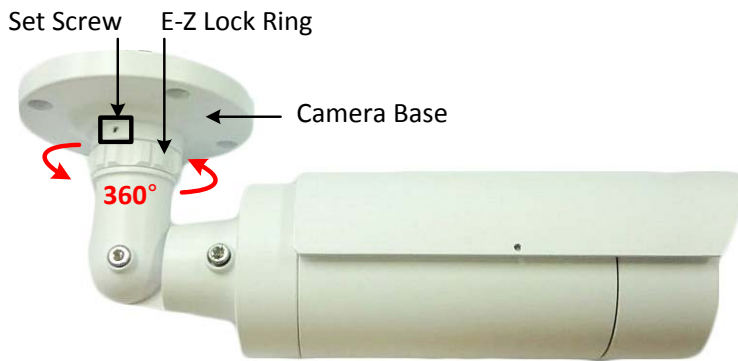
- Connect the network, power and other cables to the related devices. Please refer to *Cables* earlier in this *Quick Installation Guide*.
- Optionally insert a micro SD / SDHC card into the card slot (see *Inserting a Micro SD Card* later in this *Quick Installation Guide*).

**Note:** After opening the camera cover for inserting the micro SD card, you have to stick the applied desiccant bag inside the camera.

6. Access the camera live view. Please see 3. *Accessing the Camera*. Or connect a handheld test monitor to the Video Test Output on the camera module for adjusting camera focus/zoom/angles. For details on how to adjust camera focus / zoom using the 5-Axis Button on the camera module, see *5-Axis Button* earlier in this *Quick Installation Guide*.

7. Adjust the camera angles.

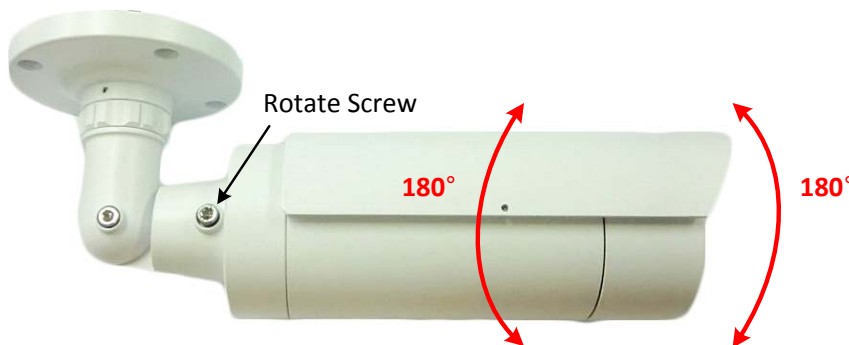
**Pan Adjustment:** Unscrew the Set Screw using the supplied Hexagon Wrench. Twist the Camera Base forcefully until it unscrews from the E-Z Lock Ring. Rotate the camera by 360° to the desired position and screw the Lock Ring until it locks against the Camera Base. Screw back the Set Screw.



**Tilt Adjustment:** Loosen the Tilt Screw using the provided Hexagon Key and adjust the tilt angle by 90°.



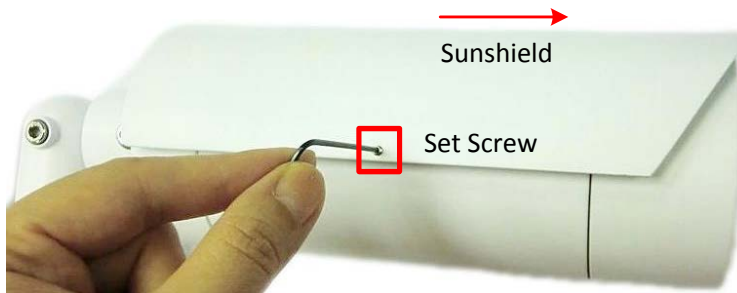
**Rotational Adjustment:** Loosen the Rotate Screws on both side of the camera body using the providing Hexagon Key and rotate the camera by 360° (180° to the left / 180° to the right).



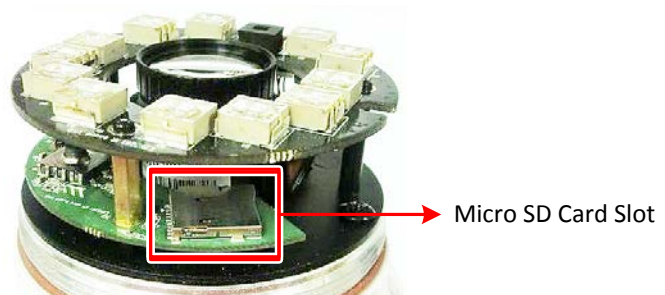
## Inserting a Micro SD Card

You can optionally insert a micro SD card into the card slot on the camera module for recording videos.

1. Loosen the Set Screw on the Sunshield using the provided Hexagon Wrench and then slide the Sunshield out from the rail on the camera.



2. Rotate and then remove the camera cover, and insert a micro SD card into the card slot.



3. Stick the supplied Desiccant Bag inside the camera.




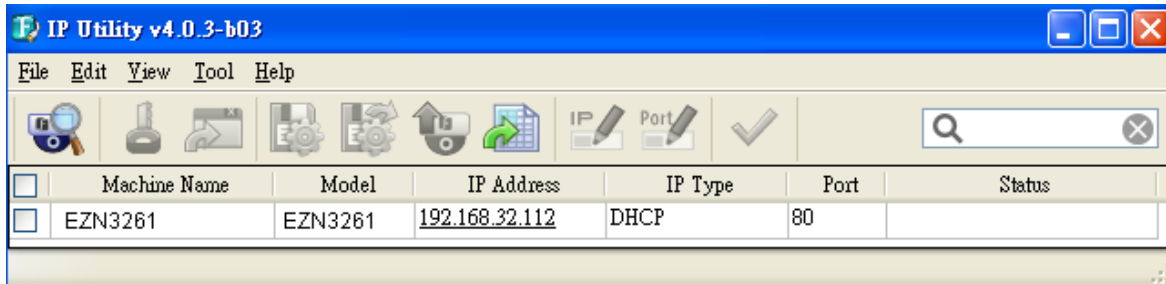
**Note:** It's recommended to close the cover immediately in case of reducing the absorption capacity of the desiccant bag inside the camera.

4. Firmly close the camera cover for waterproofing, slide the Sunshield back to the camera body and then screw the Set Screw.

### 3. Accessing the Camera

You can look up the IP address and access the Web interface of the camera using the **IP Utility (IPU)** software included in the software CD. Please connect the camera in the same LAN of your computer.

1. Install and then start the IPU program . The following IPU window appears. The IPU will automatically search the IP devices connected in the LAN.



2. Double click the IP address of the desired device, the login window pops up. Type the user ID and password to log in. By default, the user ID is **user1** and the password is **11111111**. Click **OK**, the Live View window appears.



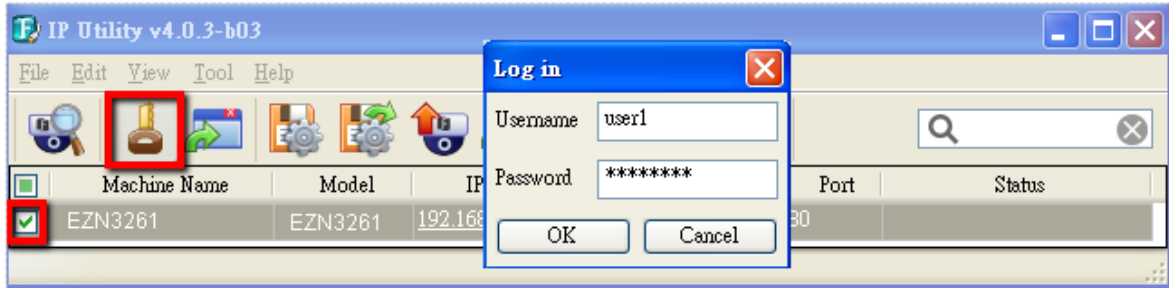
#### Note:

1. You might be required to download **ActiveX** for viewing the camera feed. If asked, click **Yes**.
2. To enable Remove Live View, Firmware Upgrade and ActiveX Prompt on Internet Explorer, some settings have to be complete. Please refer to *5.2 Settings for Microsoft Internet Explorer* in the *User's Manual*.



3. To optionally configure the Machine Name, IP Address, IP Type or Port Number using the IPU:

a. Log in the camera by checking the desired model and then click the **Log in**  icon.




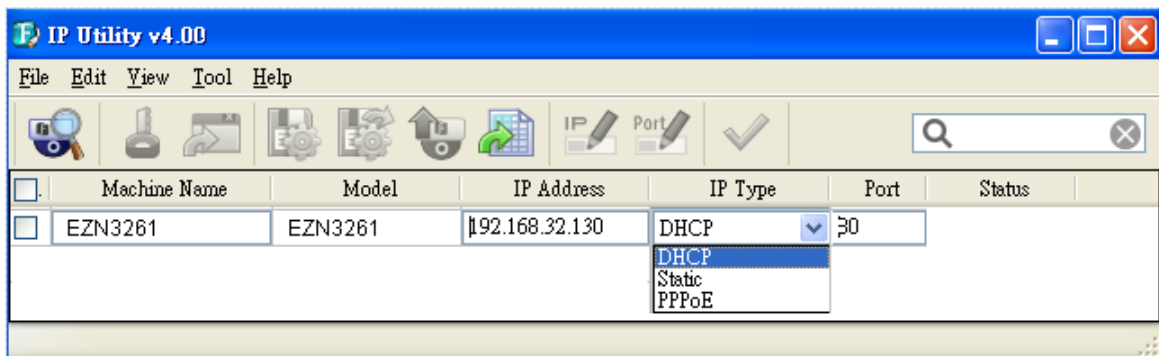
b. Type the Username and Password. Click the **OK** button, the **Login** status displays.

<input type="checkbox"/>	Machine Name	Model	IP Address	IP Type	Port	Status
<input checked="" type="checkbox"/>	EZN3261	EZN3261	192.168.32.112	DHCP	80	Login

**Note:**

1. The default user ID is **user1** and the default password is **11111111**.
2. If you select more than one camera that has the same user ID / password, you will be able to log in several cameras at once.

c. Right click the column to configure the settings. Click the **Apply Changes**  button to apply and save the settings.



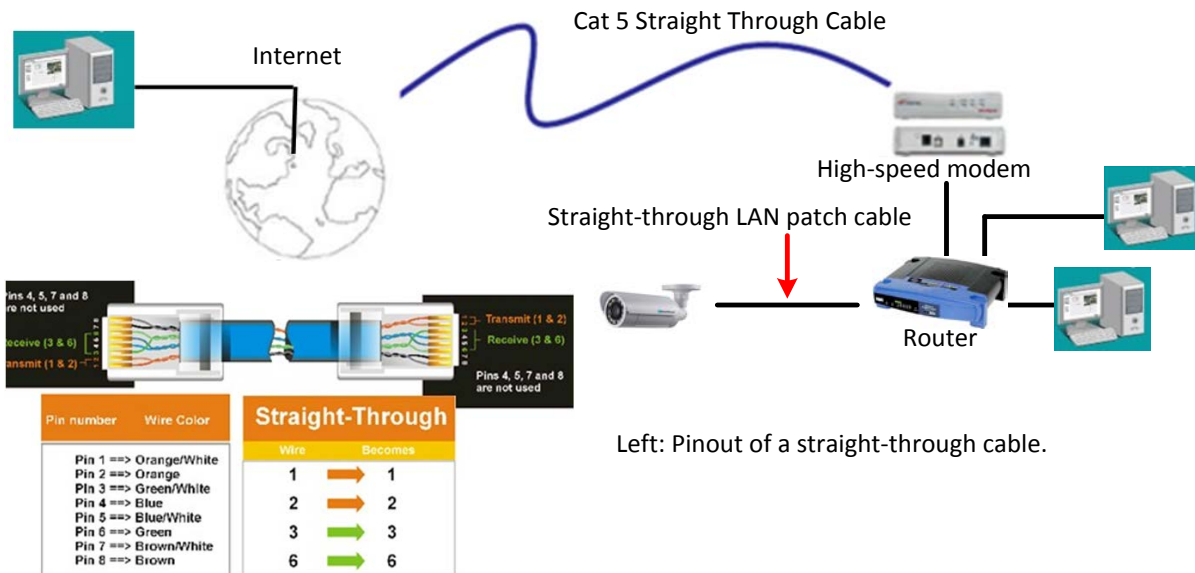
**Note:** Most networks uses DHCP to assign IP address, if you are unsure of your network settings, please consult your network administrators for configuration details.

## 4. Connecting to the Network

You can use one of the methods below to connect the camera to the network.

### Router or LAN Connection

This is the **most common connection** in which the IP camera is connected to a router and allows multiple users on and off site to see the IP camera on a LAN/WAN (Internet). The camera must be assigned an IP address that is compatible with its LAN. By setting up port forwarding on the router, you can remotely access the cameras from outside of the LAN via the Internet. To remotely access the Web interface of the IP camera, please refer to *7.1.1 Network (DDNS)* in the User's Manual. To set up port forwarding, please consult the manual of the router.



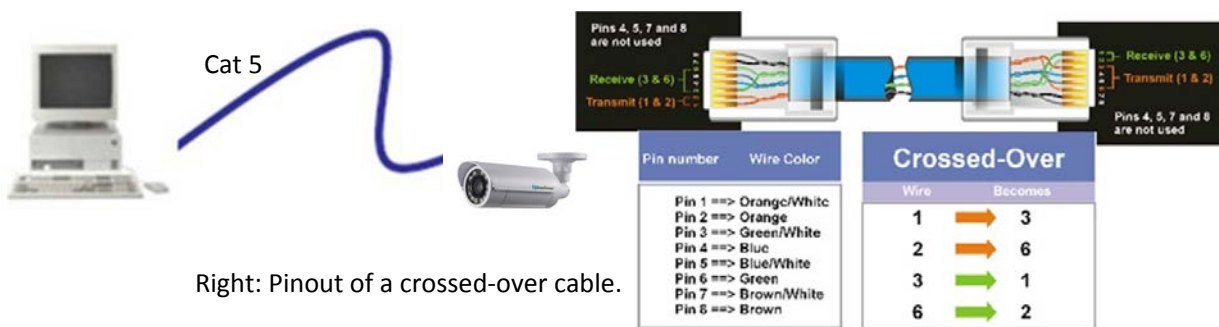
### Direct High-Speed Connection

In a Direct High-Speed Connection, the camera connects directly to a modem without the need for a router. You need to set the static or dynamic WAN IP address assigned by your ISP (Internet Service Provider) in the camera's configuration web pages. To access the camera, just type "http://xxx.xxx.xxx.xxx", where xxx.xxx.xxx.xxx is the IP address given by your ISP. If you have a dynamic IP address, this connection may require that you use DDNS for a reliable connection. Please refer to 7.1.1 Network (DDNS) in the User's Manual.




### One-to-One Connection (Directly from PC to IP camera)

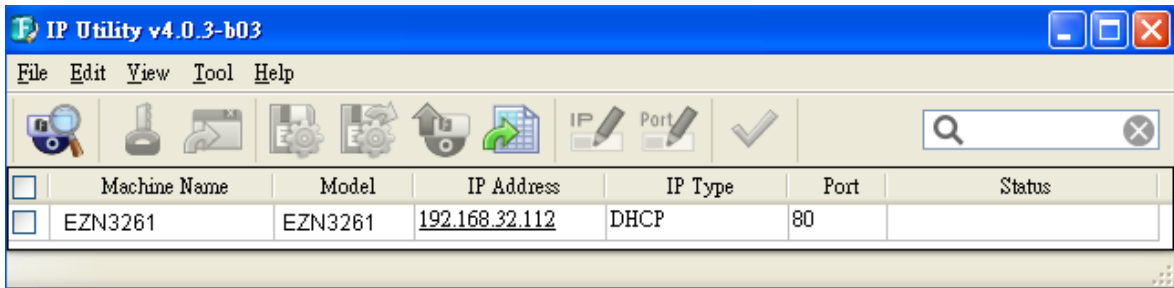
You can connect directly without using a switch, router or modem. However, only the PC connected to the camera will be able to view the IP camera. You will also have to manually assign a compatible IP address to both the computer and the IP camera. Unless the PC has another network connection, the IP camera will be the only network device visible to the PC. See the diagram below:




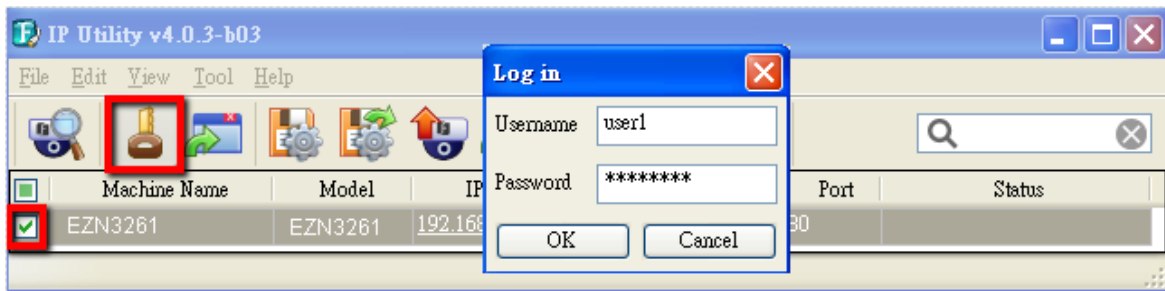
## 5. Upgrading Firmware

You can upgrade camera's firmware using the **IP Utility** software, which is included in the software CD.

1. Install and then start the IPU program , the following IPU window appears. The IPU will automatically search the IP devices connected in the LAN.



2. Log in the camera by checking the desired model and then click the **Log in**  icon. The Log in dialog box appears.



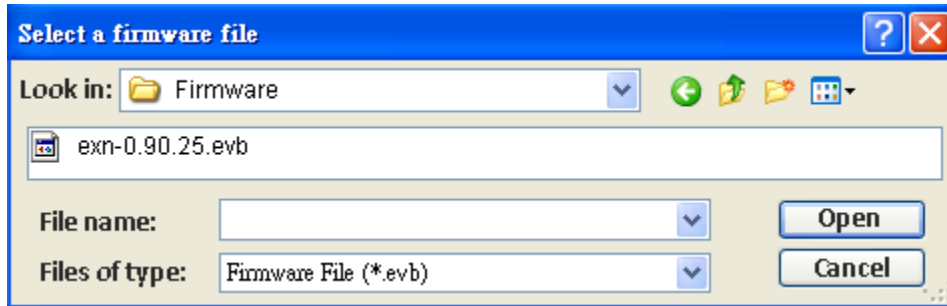
3. Type the Username and Password. Click the **OK** button, the **Login** status displays.

Machine Name	Model	IP Address	IP Type	Port	Status
EZN3261	EZN3261	192.168.32.112	DHCP	80	Login

**Note:**

1. The default user ID is **user1** and the default password is **11111111**.
2. If you select more than one camera that has the same user ID / password, you will be able to log in several cameras at once.
3. Up to 10 cameras can be simultaneously upgraded to the latest firmware. If you connect the cameras to a PoE switch, please make sure the Power Consumption of the PoE switch is sufficient.

- Click the **Upgrade Firmware** button , a browsing window appears.



- Select the **firmware file (.evb)** and then click **Open**. The IPU will automatically upgrade the firmware. The camera will reboot once the upgrade process is complete.

<input type="checkbox"/>	Machine Name	Model	IP Address	IP Type	Port	Status
<input checked="" type="checkbox"/>	EZN3261	EZN3261	192.168.32.112	DHCP	80	Success

# EverFocus Electronics Corp.

## EverFocus Taiwan:

12F, No.79, Sec. 1, Shin-Tai Wu Road,  
Hsi-Chih, Taipei, Taiwan  
TEL: +886 2 2698 2334  
FAX: +886 2 2698 2380  
www.everfocus.com.tw  
[marketing@everfocus.com.tw](mailto:marketing@everfocus.com.tw)

## EverFocus China - Beijing:

Room 609, Technology Trade Building,  
Shangdi Information Industry Base,  
Haidian District, Beijing 100085, China  
TEL: +86 10 6297 3336~39  
FAX: +86 10 6297 1423  
www.everfocus.com.cn  
[marketing@everfocus.com.cn](mailto:marketing@everfocus.com.cn)

## EverFocus USA - California:

1801 Highland Avenue, Unit A, Duarte, CA 91010, USA  
TEL: +1 626 844 8888  
FAX: +1 626 844 8838  
www.everfocus.com  
[sales@everfocus.com](mailto:sales@everfocus.com)

## EverFocus Japan:

5F, Kinshicho City Building, 2-13-4  
Koto-Bashi, Sumida-Ku, Tokyo, 130-0022, Japan  
TEL: +81 3 5625 8188  
FAX: +81 3 5625 8189  
www.everfocus.co.jp  
[info@everfocus.co.jp](mailto:info@everfocus.co.jp)

## EverFocus India:

Suite 803, Housefin Bhavan, C-21,  
Bandra Kurla Complex, Bandra (East),  
Mumbai 400051, India  
TEL: +91 22 6128 8700  
FAX: +91 22 6128 8705  
www.everfocus.in  
[sales@everfocus.in](mailto:sales@everfocus.in)

## EverFocus Europe - Germany:

Albert-Einstein-Strasse 1, D-46446  
Emmerich, Germany  
TEL: +49 2822 93940  
FAX: +49 2822 939495  
www.everfocus.de  
[sales@everfocus.de](mailto:sales@everfocus.de)

## EverFocus China - Shenzhen:

4F, No. 2, D4 Building, Wan Yelong  
Industrial Park, Tangtou Road, Shiyan,  
Baoan, Shenzhen, Guangdong 518101, China  
TEL: +86 755 2765 1313  
FAX: +86 755 2765 0337  
www.everfocus.com.cn  
[marketing@everfocus.com.cn](mailto:marketing@everfocus.com.cn)

## EverFocus USA - New York:

415 Oser Avenue, Unit S, Hauppauge, NY 11788, USA  
TEL: +1 631 436 5070  
FAX: +1 631 436 5027  
www.everfocus.com  
[sales@everfocus.com](mailto:sales@everfocus.com)

## EverFocus China - Shanghai:

Room 403, Ruijin Business Center, No.96, Zhaojiabang  
Road, Luwan district, Shanghai 200020, China  
TEL: +86 21 6471 2229 / 6471 2291  
FAX: +86 21 6471 0566  
www.everfocus.com.cn  
[marketing@everfocus.com.cn](mailto:marketing@everfocus.com.cn)



Your EverFocus product is designed and manufactured with high quality materials and components which can be recycled and reused. This symbol means that electrical and electronic equipment, at their end-of-life, should be disposed of separately from your household waste. Please, dispose of this equipment at your local community waste collection/recycling centre. In the European Union there are separate collection systems for used electrical and electronic product. Please, help us to conserve the environment we live in!

Ihr EverFocus Produkt wurde entwickelt und hergestellt mit qualitativ hochwertigen Materialien und Komponenten, die recycelt und wieder verwendet werden können. Dieses Symbol bedeutet, dass elektrische und elektronische Geräte am Ende ihrer Nutzungsdauer vom Hausmüll getrennt entsorgt werden sollen. Bitte entsorgen Sie dieses Gerät bei Ihrer örtlichen kommunalen Sammelstelle oder im Recycling Centre. Helfen Sie uns bitte, die Umwelt zu erhalten, in der wir leben!



**EverFocus**<sup>®</sup>

P/N: 4605PZ3261B022B