

P2P WiFi Bulb Surveillance camera

This user manual will introduce how to use this product briefly, and provide you with detailed information of each step operation. Please read carefully before using this camera. And also keep this manual well, we hope that this product will satisfy your various daily life needs and long-term service to you!

Product Quality Assurance

This product is in line with the FCC & CE certification authority standards, which well guarantee customers safety use.

I-Product Features

1. Stylish appearance, camera body with three-dimensional UV treatment
2. With 24 pieces infrared night vision LED light
3. Remote control to record video by mobile APP.
4. Remote control to take photo by mobile APP.
5. 7*24 hours uninterruptible working
6. Photo taking, video recording, great night vision, motion detection function alarm
7. Point-to-point connection, can work without a network connection

Instruction for quick operation of network surveillance bulb camera

This product is a 25-frame HD (1,080P) network surveillance bulb camera with an external micro SD card and a multi-functional high-tech product integrating functions of video recording, photographing, night vision, motion detection alarm, APP real-time monitoring, and file storage . It is equipped with high-capacity batteries, and has functions of 5 megapixel HD recording. It supports up to 32GB micro SD card, 7*24 hours uninterruptible long-time work and with APP convenient control. Moreover, it works as the best anti-theft and evidence-gathering tool with strong concealment.

I-APP software download

For Android phones, please search in Google Play :[P2PLiveCam](#) to download the APP.


For iphone, please search in AppStore:[P2PliveCam](#) to download the APP.

II-Wifi connection method one


1.Open the wifi function of your mobile,and then turn on the bulb camera (30 seconds later,blue indicator light start flickering,then the bulb camera is turned on , and then red indicator light will keep on flickering, wchich means the bulb wifi signal is opened)

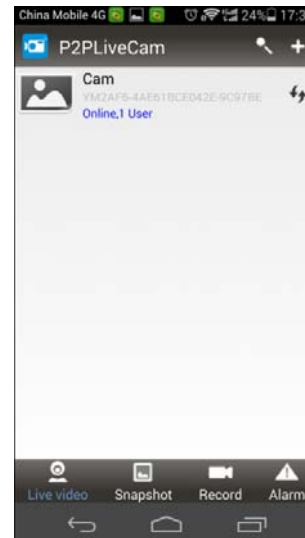
2. Open APP software that is downloaded and installed in your mobile phone. (Specific operation steps are shown in below pictures.)



Step 1 (Open )



Step2 (click )



Step3 (Click )



Step4 (Input the UID number or scan the QR code of this bulb camera

Step5 (Click  to choose the available WIFI signal

from your home router and input the password, Click )

3. After you finish the WIFI connection successfully, you will be able to see the live video in the APP.

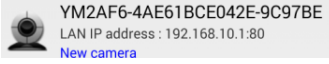
4. When the bulb camera is connect successfully to your home router wifi signal, the red indicator light will keep on.

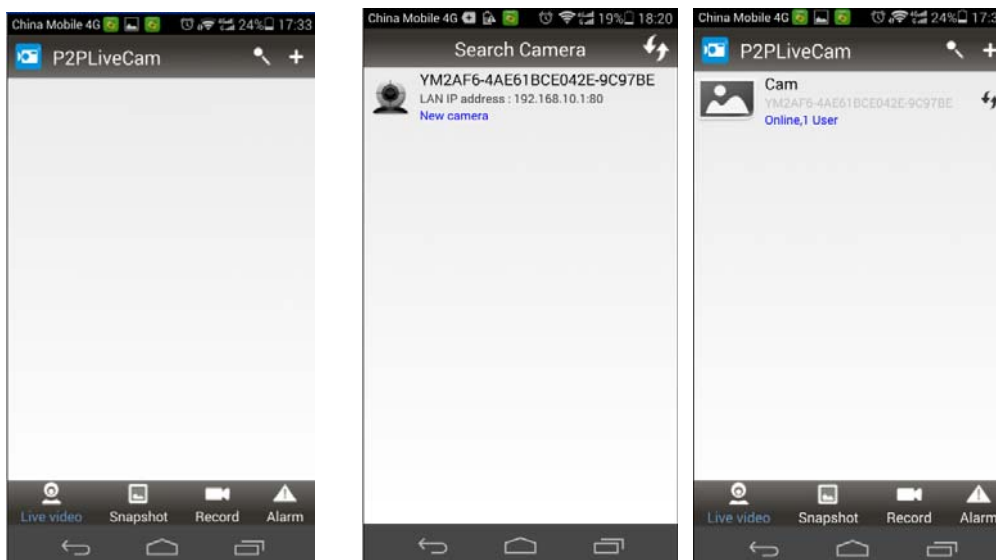
III-Wifi connection method two

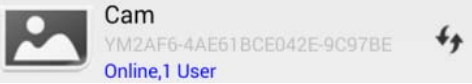
1. Then turn on the bulb camera (30 seconds later,blue indicator light start flickering,then the bulb camera is turned on , and then red indicator light will keep on flickering, wchich means the bulb wifi signal is opened)

2. Turn on the WLAN of your mobile. Then use your mobile to search the WIFI signal(WIFI name is the UID number on the bulb camera) sended out by this bulb camera, and input the password to connect.(You need wait about three minutes to connect.

4.After your mobile connect to the WIFI signal(sended out by this bulb camera). Then you open the APP, then click  to search the

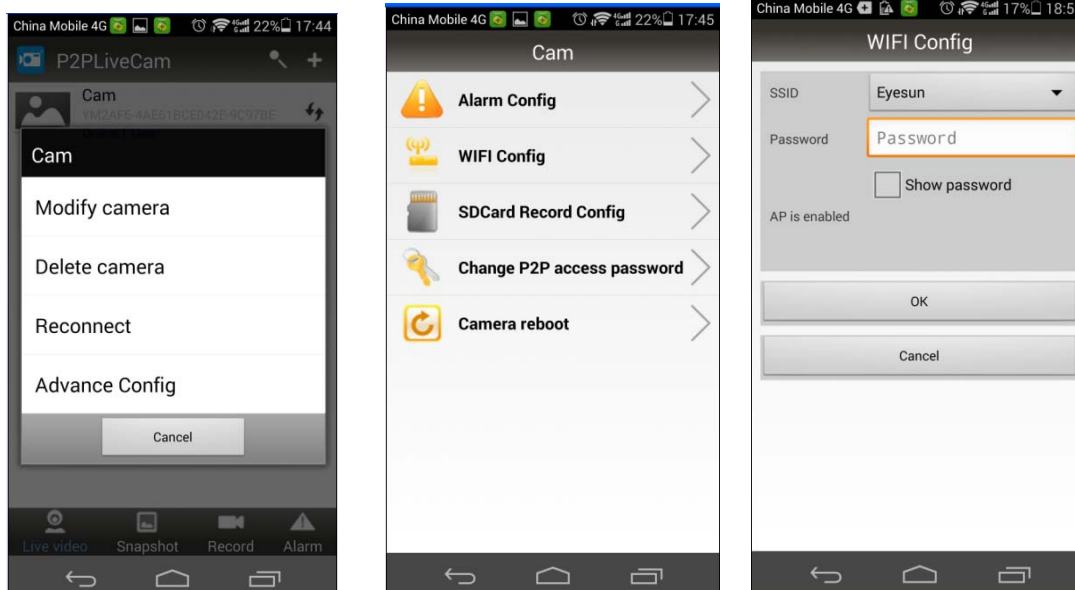
camera ,then click  .



5. long click  , then click


 , click  .

Select the SSID then input the password .click  .



IV-Point-to-point AP direct connection(when you are in your home, and do not need the internet to control the bulb camera, you can just connect your mobile with the wifi sended out by the bulb camera to control the bulb camera in your home.)

1. You turn on the bulb camera, then you search the WIFI signal(WIFI name is the UID number on the light bulb camera) sended out by the bulb camera with your mobile, and input the password to connect to this wifi signal(It takes about three minutes to finish connection)

2. After your mobile connect to the WIFI signal sended out by the bulb camera, then open the APP, click , then you can control the bulb camera on your APP.

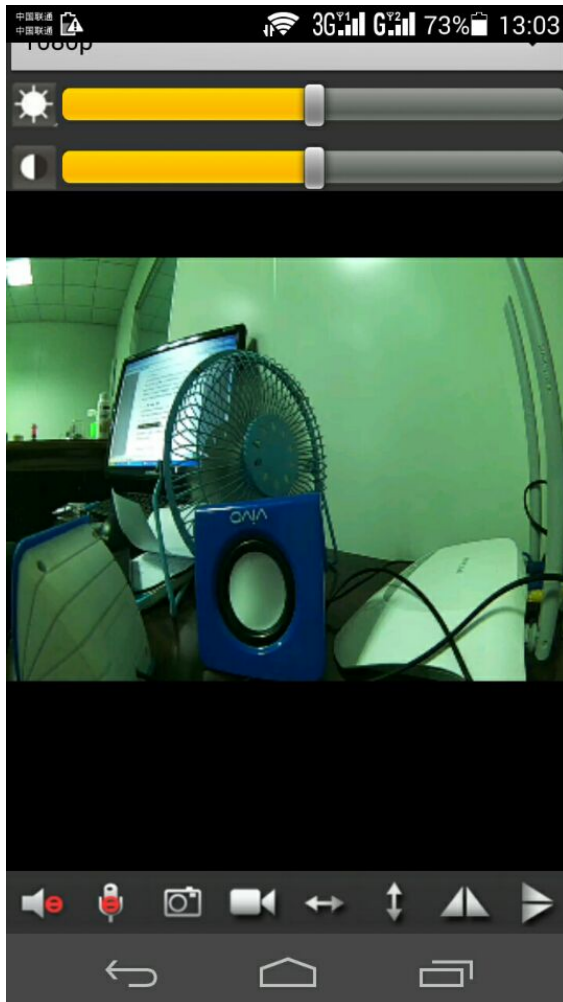
V-Screen shot, video recording and alarm

1.In the APP, open the live video as below picture, you can see on the top of the screen with "1080P, 720P, 480P" this three options, you can choose according to your own preference. Also you can adjust the color contrast degree and brightness.

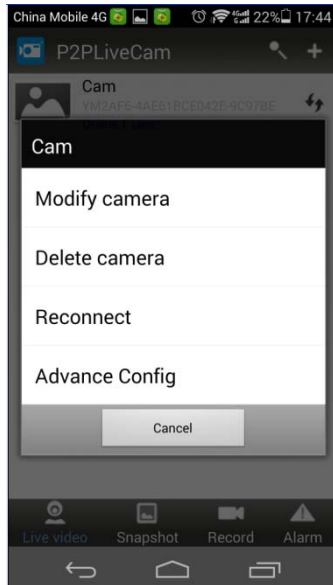


,here from left to right respectively

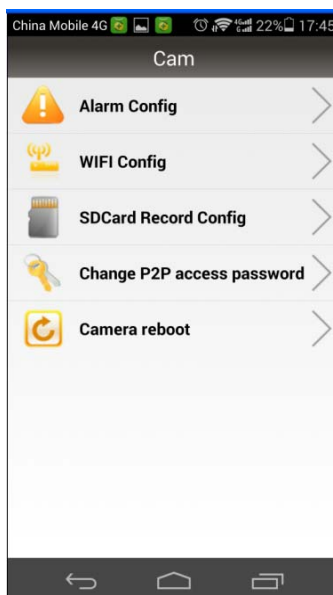
represent the function: monitor, photograph, video recording, left/right, up/down. By clicking “photograph” or “video recording”, the images or videos will be saved in the phone memory (as shown below).



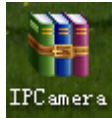
2. Long press as below the “Cam”, to start more setting options.



3. Advanced configuration(To remotely change basic functions of the device)



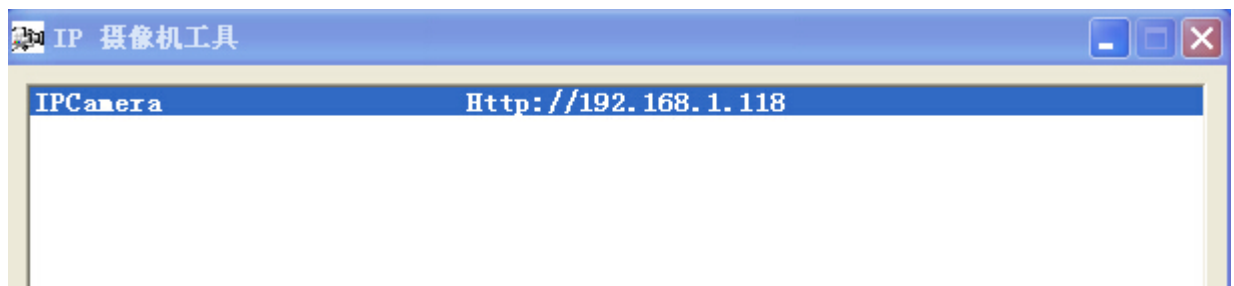
Administrator operation guide




1. Install the search tool IPCamera (which in the disc) on the computer. (Note: administrator setting can only be made within LAN).



2. Click IPCamera to display the devices connected to network (as below)



3. Double click the searched IP. Enter in the next page to type in user name (admin) and click to confirm it. (Note: the original user name is admin, with no password)

4. Enter in setting page after completing the above steps. Download the plug-in and select a language for first use (click  IE plug-in ActiveX, haga clic para descargar to download and install).

IPCam | 2014

Ver 1.7.23.23 HD

推荐使用浏览器插件，支持视音频实时播放，兼容Windows平台常见浏览器



iPhone/iPod touch以及iPad专用



手机浏览器(如Android等)

适用于支持Javascript的手机浏览器。



IE 播放插件



选择语言：

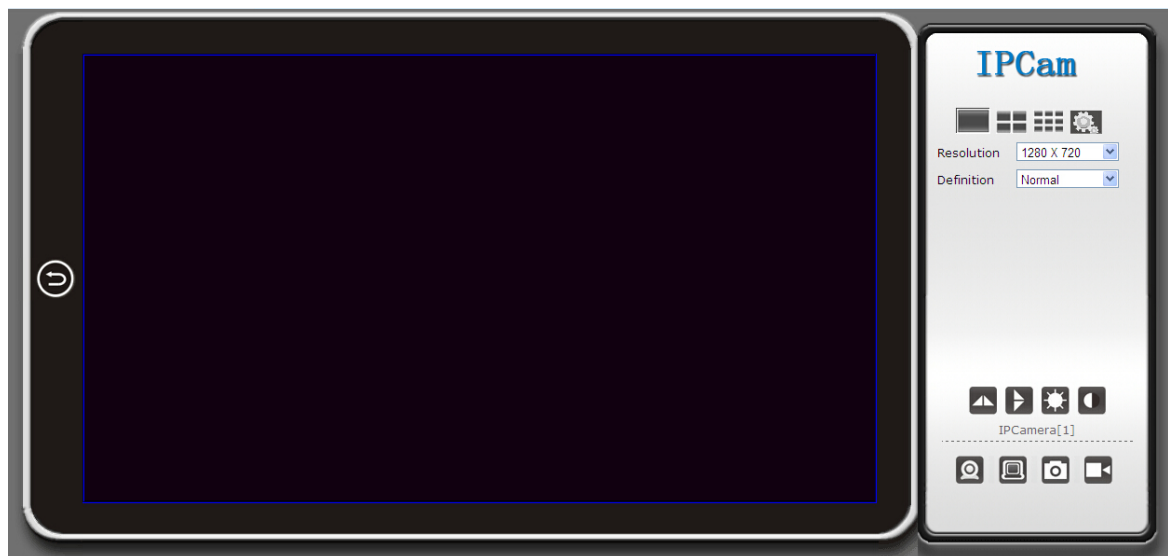


Navegador de plug-ins

Recomendado navegador plug-in, soporte para vídeo en tiempo real y reproducción de audio, compatible con plataformas Windows navegadores comunes

5. Click

again to enter in setting page (as shown below).



6.

Click



to

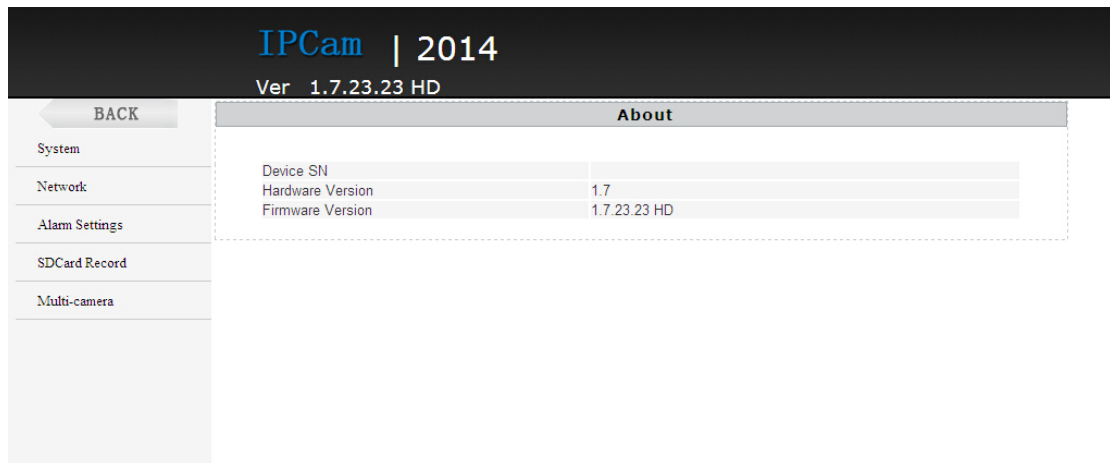
start

setting

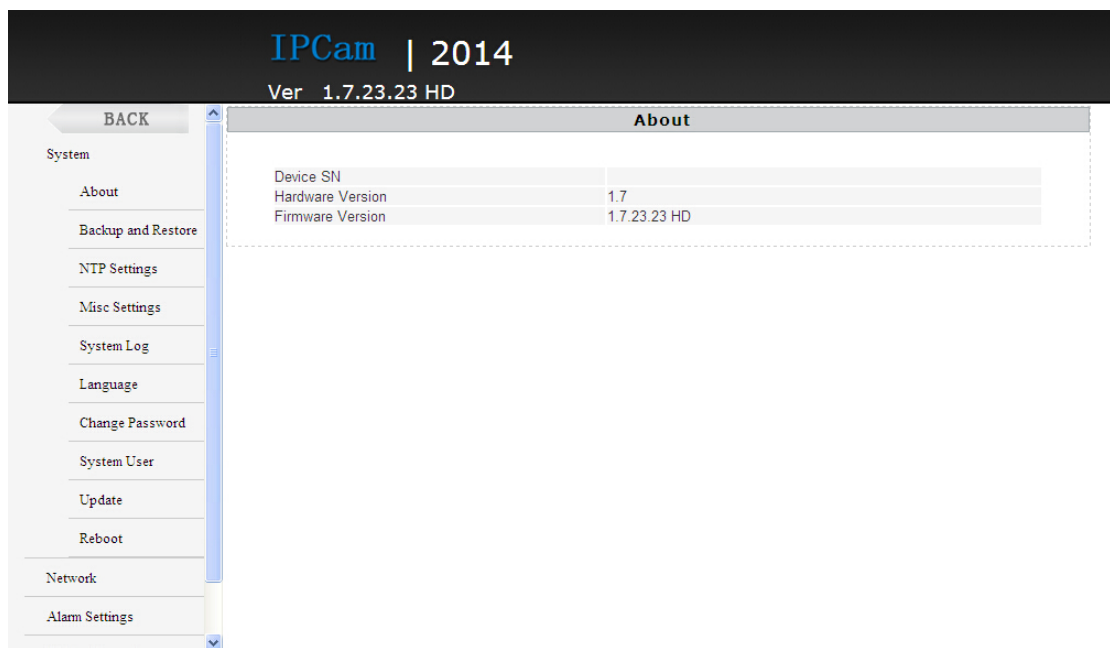
(as

shown

below)



7. System management setting: to select the item to be set (as shown below).



Computer remote surveillance of the bulb camra:



1. You should install the computer client software first
2. After finish install, you can find below in your computer



3. Double click on above , and then you will see below

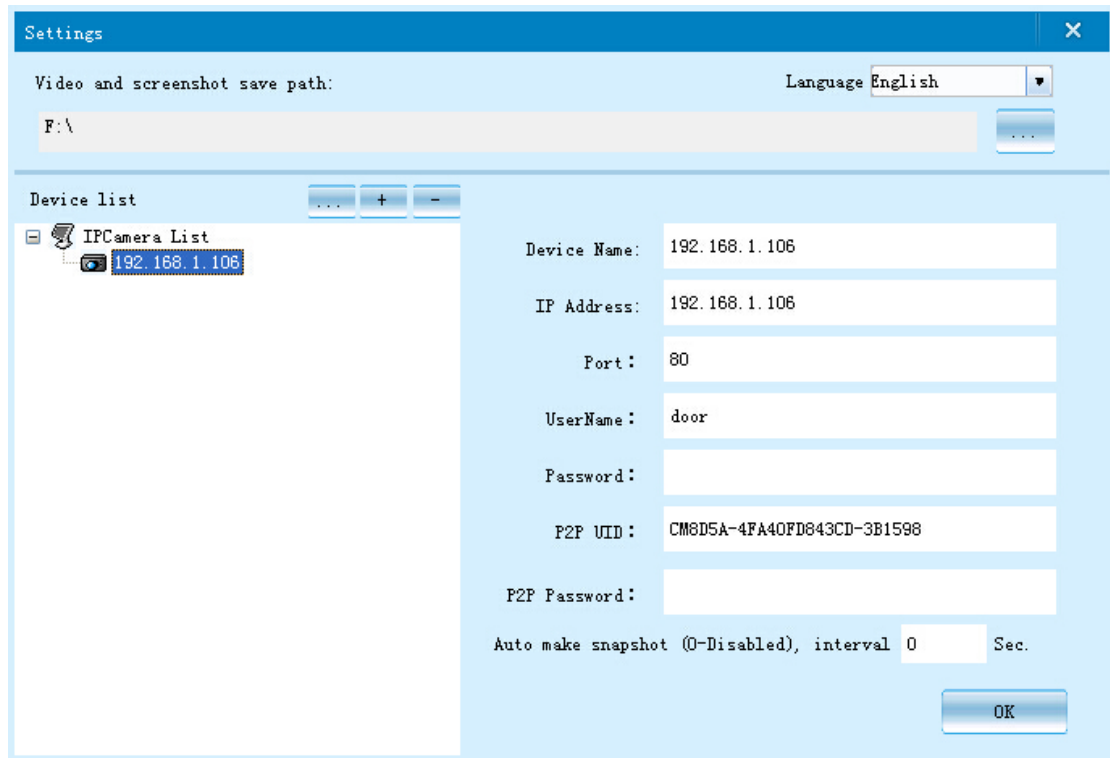
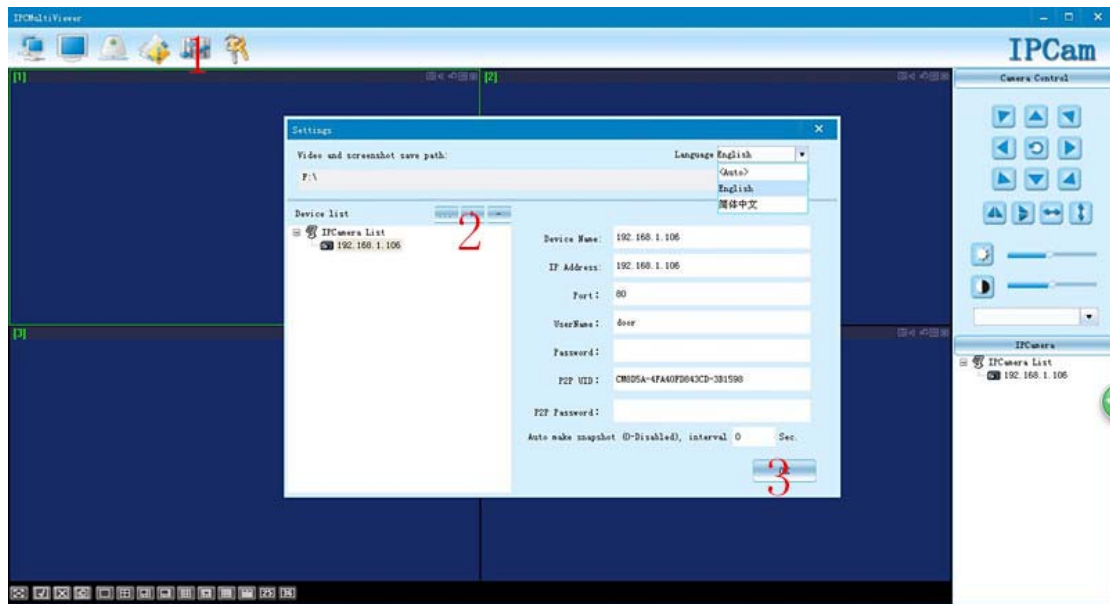
4. User name(Account): admin

You do not need to input password, just left empty.



5. Then ,as above the picture, click "1"(with red circle), then click"2", then click to start search. Then you will find an IP as below picture, and input the UID number and

user name. click “OK”



Then you will see the live video .

Change the password:

The image shows a 'Change Password' dialog box with the following fields and buttons:

- User Name:** admin
- Old Password:** (empty)
- New Password:** (empty)
- Confirm Password:** (empty)
- Buttons:** OK, Cancel

Main function description

1. Time setting
Open system management page——click time setting——select time zone——synchronize with host ——save.
2. Administrator password setting
Open “change password” ——type in the new password——confirm the new password——save.
3. Change the password of device (**original password: 8888**)
Open “network setting” ——P2P setting——type in the new password——save——return to system management to reboot the device. (it can also be set remotely by APP).
4. Alarm setting
Open “alarm setting” ——start alarm setting——click IP Camera built-in——select the required sensitivity. (Option 6 is suggested)
5. SD card setting
SD card should be formatted for the first time to insert——enter in SD card setting to select the needed function before setting other functions.
6. View the content of SD card
method 1: Plug out the card and read with a card reader.
method 2: IE client——setting——SD card recording——SD files——select the file to download .

Specifications

Pixl	5 megapixel CMOS
Resolution	1080P
Video format	AVI
Frames	25
View angle	120°
Night vision lamp	24 super strong night vision lamps
Distance of motion detection shooting	6 m straight-line distance
Minimum illumination	1LUX
Continuous recording time	7*24 hour uninterruptible working
Compressed format	H. 264
Sound recording range	15m ²
Power consumption	350MA/3. 7V
Storage temperature	-20-80℃
Operating temperature	-10-60℃
Operating humidity	15-85%RH
Type of memory card	Micro SD card
Maximum capacity of memory card	32GB
Play software	VLCPlayer/SMPlayer
Computer operation system	Windows/Mac OS X
Mobile phone operation system	Android/iOS
Web browser	IE7 and above, chrome, firefox safari. etc
support limited pieces client software onlie at same time	Can support 4 client software online the same time

Trouble shooting

1. Remote control is not enough.

Please select the most suitable definition according to the current network environment.

2.SD card cannot save files.

SD must be formatted for first use.

3.The device cannot be connected to network.

Please select the proper connection method according to the network nature.

4.The video in SD card cannot be played fluently on APP.

It is due to different decoding capacity of mobile phones. You can adjust the definition of recording device to fit your mobile phone.

5.The passwords are forgotten.

Directly click the reset key of device for 10 seconds to restore factory settings.

Precautions

Use occasions: please strictly comply with relevant state decrees and do not use it any other illegal purposes at your own risks.

Software upgrade: to achieve better product performance, the manufacturer will make continuous improvement to the software. This product is designed for convenient software upgrade by customers. Please ask your local distributor for the information and upgrading method of latest version of software.

Working temperature: please use it under natural temperature. Do not operate it under a temperature that is not adapted for human body.

Working humidity: please use it under an environmental humidity that is suitable for human life. Do not put the product in a moist working environment since the product is not designed with waterproof function.