



iPlayer[®] 2

USER GUIDE

FOR THE iPLAYER 2 LIGHTING SHOW STORAGE AND PLAYBACK SYSTEM

©2001-2002 Color Kinetics Incorporated. All rights reserved. Chromacore, Color Kinetics, the Color Kinetics logo, ColorBlast, ColorPlay, ColorScape, iColor, iPlayer, QuickPlay, and Smartjuice are registered trademarks, and ColorBurst and iColor Cove are trademarks of Color Kinetics Incorporated.

All other brand or product names are trademarks or registered trademarks of their respective owners.

Specifications are subject to change without notice.

Printed in the U.S.A.

Contents

Chapter 1

Introduction 1

iPlayer 2 1

About This Guide 2

QuickPlay® Software 2

Chapter 2

Installation 3

Installing iPlayer 2 Device Drivers 3

Installing iPlayer 2 Drivers for Windows 4

Installing iPlayer 2 Drivers for Mac OS X 6

Chapter 3

Using iPlayer 2 7

Setting up iPlayer 2 in Program Mode 7

 Programming 8

Setting up iPlayer 2 in Playback Mode 8

 Playing Shows with iPlayer 2 9

Chapter 4

External Control 11

Color Kinetics Controller Keypad 11

Using the RS232 Serial Connection 12

Using the Contact Closure Switch 12

Appendix A

Capacity 13

iPlayer 2 Capacity 13

Appendix B

iPlayer 2 Pinouts 15

Power: BNC 15

Serial Port: DB9F 16

DMX: RJ45-8 17

Expansion: 26-Pin Dual Row .100" Header 18



CHAPTER 1

INTRODUCTION

iPlayer 2

iPlayer[®] 2 is a multi-show storage and playback device used to control Color Kinetics[®] lights.

iPlayer 2 stores multiple shows designed with Color Kinetics ColorPlay[®] software. It can control a full DMX512 universe (512 addresses, or 170 individually addressed Color Kinetics lights).

iPlayer 2 Package Contents

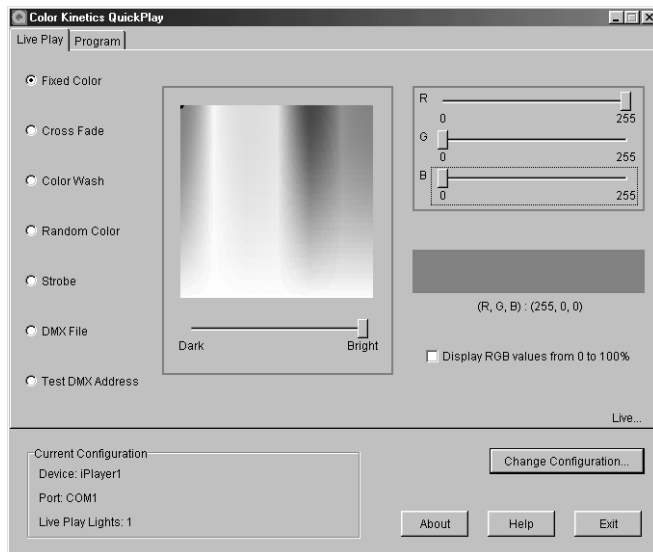
- iPlayer 2 controller device
- iPlayer 2 Installation CD ROM
- USB cable
- RJ45 (CAT 5) data cable
- User Guide
- Product warranty and registration postcards

About This Guide

This guide provides instructions on the installation, set up, and operation of the iPlayer 2.

QuickPlay® Software

iPlayer 2 comes packaged with QuickPlay® software for Windows. You use QuickPlay to control iPlayer 2 from your PC. QuickPlay offers Live Play and Program features. Using the Live Play feature, you can stream DMX data from your computer to light fixtures, using predefined color effects or a DMX file you have created previously. Using Program mode, you can download light shows to iPlayer 2 and assign triggers to each show.



Refer to the QuickPlay Online Help system for complete information about using QuickPlay.



CHAPTER 2

INSTALLATION

Installing iPlayer 2 Device Drivers

Before you install the iPlayer drivers, close all running applications, disable virus protection, and ensure your computer has enough memory and free disk space.

System Requirements

Windows

- Windows 98 2nd edition, ME, 2000, XP
- 128 MB RAM
- 35 MB free disk space

Macintosh

- MacOS 10.1.3 or greater
 - 128 MB RAM
 - 5 MB free disk space
-
-

Installing iPlayer 2 Drivers for Windows

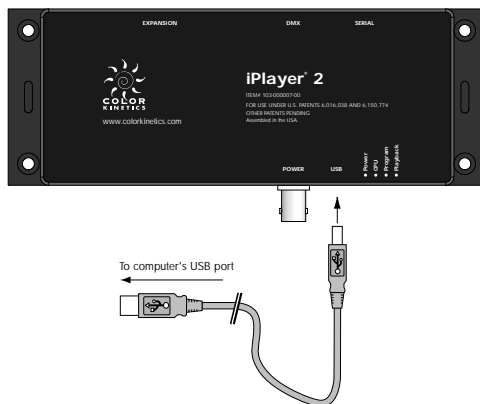
The following instructions will guide you through the task of installing the iPlayer 2 Pre-Config drivers and the DMX Interface drivers. Driver installation varies from system to system, therefore you may see subtle differences in your installation.

Follow the instructions to install the drivers for your iPlayer 2.

Note: Do not click **CANCEL** or **SKIP** at any time during the installation. Doing so will prevent your driver from being properly installed on your computer.

To install iPlayer 2 Drivers for Windows

1. Insert the iPlayer 2 Installation CD into the CD-ROM drive.
2. Using the USB cable, connect iPlayer 2 to any USB port on your computer. Both the Power and Program lights on iPlayer 2 will light, indicating that the device is in Program Mode.



3. After you attach the iPlayer 2 to your computer, Windows will detect new hardware and launch the **NEW HARDWARE WIZARD**.

4. Select the recommended option to have wizard search for and install the best driver for your device and click **NEXT**.
5. Windows will search for the driver software. Select **CD-ROM DRIVE** if prompted and click **NEXT**.

Note: *Windows XP will prompt you to select the best match from a list of drivers. After selecting the driver and clicking next, you will receive a warning that the drivers are not signed. Click continue anyway.*

6. When Windows completes the driver installation, click **FINISH**. The **NEW HARDWARE WIZARD** then guides you through the installation of the DMX Interface drivers following the steps above.

Installing iPlayer 2 Drivers for Mac OS X

The following instructions will guide you through the task of installing the iPlayer 2.

Do not connect the iPlayer 2 to the computer until after you have completed the following steps.

To install iPlayer 2 Drivers for Mackintosh OS X

1. Insert the iPlayer 2 CD into the CD-ROM drive.
2. Double click `Install CK Drivers.pkg` on the ColorPlay CD.
3. You will be prompted for an Administrator password to continue. Enter your user **NAME** and **PASSWORD** and click **OK**.
4. The **COLOR KINETICS DEVICE DRIVERS** information screen will appear. Click **CONTINUE** to proceed with the installation.
5. After reading the **SOFTWARE LICENSE AGREEMENT** click **CONTINUE**. You will be prompted to agree to the terms of the software license agreement. Click **AGREE** to continue.
6. From the **SELECT A DESTINATION** screen, select the hard drive where Mac OS X is installed and click **CONTINUE**.
7. Click **INSTALL** from the **EASY INSTALL** screen. Before the installation begins, you will receive the prompt: *"Installing this software requires you to restart your computer when the installation is done. Are you sure you want to install the software now?"* Click **CONTINUE INSTALLATION**.
8. When the installation is complete, click **RESTART**.
9. Attach the iPlayer 2 to any USB port on your Mac, and access it with software such as ColorPlay.



CHAPTER 3

USING IPLAYER 2

iPlayer 2 has two operating functions: recording light shows and playing back the stored shows. These two operations are called Program Mode and Playback Mode, respectively. iPlayer 2 cannot operate both Program Mode and Playback Mode simultaneously because each mode requires a unique physical set up of iPlayer 2. The remainder of this chapter explains the operation of iPlayer 2 in detail.

Setting up iPlayer 2 in Program Mode

1. Connect the iPlayer 2 to the USB port on your computer using the provided USB cable.
2. Ensure that both the Power and Program indicator lights on iPlayer 2 are lit, indicating that the device is in Program Mode.

In this configuration, iPlayer 2 is being powered from the computer, so no external power source is required.

Note: *The first time you connect iPlayer 2 to your computer, you will be prompted to install the iPlayer 2 device drivers. These drivers are located on the iPlayer 2 Installation CD ROM. Refer to Chapter 2 for the device driver installation instructions.*

Switching from Playback to Program Mode

1. Disconnect the BNC power supply and the RJ45 data supply from iPlayer 2.
2. Connect the iPlayer 2 to the USB port on your computer using the provided USB cable.

Note: *iPlayer 2 will not function properly if it is connected in Program and Playback Modes simultaneously.*

Programming

Once iPlayer 2 is in Program Mode, it is ready to record DMX files or shows designed in ColorPlay. Refer to the ColorPlay User Guide for instructions on how to download shows and assign triggers. Refer to Appendix A for a general guideline of iPlayer 2 Capacity constraints.

Setting up iPlayer 2 in Playback Mode

1. Disconnect iPlayer 2 from the computer by disconnecting the USB cable from either iPlayer 2 or the computer.
2. Connect iPlayer 2 to the Color Kinetics lights, directly or via a data supply.

Using an RJ45 (CAT 5) data cable, connect the DMX port on iPlayer 2 to the Data In port on the lights, or the power/data supply or power/data adapter powering the lights in the installation.

Note: *Refer to the User Guide for your fixtures to determine the data connection for you lights.*

3. Connect iPlayer 2 to a Color Kinetics 24 VDC power supply.

Using the BNC port on iPlayer 2, connect a power cable to the power/data supply or C-Series power supply that powers the lights.

A separate BNC to flying lead power cable may be required depending on which Color Kinetics power supply is used in the installation.

4. After connecting iPlayer 2 to the lights and power supply, ensure that the Power and Playback lights on iPlayer 2 are lit, indicating that the device is in Playback Mode.

Playing Shows with iPlayer 2

After you download shows in Program Mode then switch to Playback Mode, iPlayer 2 automatically begins playing the default show, assigned to Trigger 1.

Switching Shows

To switch to another show, use an external switching interface such as Color Kinetics Controller Keypad or use ColorPlay to assign a new show to Trigger 1. Refer to Chapter 4 for additional information on iPlayer 2-to-external control interface options.



CHAPTER 4

EXTERNAL CONTROL

iPlayer 2 is designed with a large memory capacity and the ability to store multiple shows, which is ideal for use with an external controller interface to provide easy access to multiple shows. iPlayer 2 offer three options for setting up external control interfaces to trigger multiple shows.

Color Kinetics Controller Keypad

Color Kinetics offers an accessory Controller Keypad, which is a single-gang wall mounted architectural control device. Controller Keypad has eight show buttons to trigger up to eight different shows stored on iPlayer 2. It also has dimmer controls, and a master OFF switch. This keypad is connected to the iPlayer to through the RS232 serial port. Controller Keypad comes with the specified serial cable and installation instructions.

Using the RS232 Serial Connection

iPlayer 2 is capable of interfacing through the serial port with many popular third-party architectural controllers, such as controllers from Lutron and Vantage. For a complete listing of the compatible architectural controller and technical instructions for setting the appropriate RS232 serial strings, refer to Color Kinetics' website www.colorkinetics.com/Professional Lighting Support/Applications Notes.

Using the Contact Closure Switch

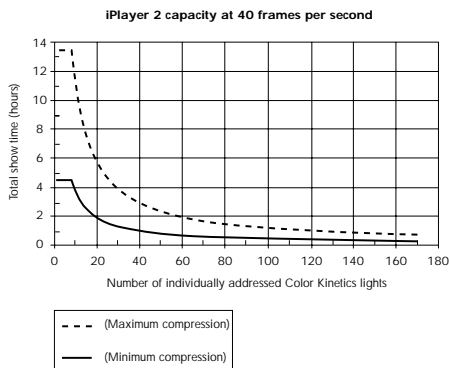
iPlayer 2 accepts input from any standard dry contact closure switch. This requires a ribbon cable with a 26-pin dual row 0.100-inch header, which connects to the Expansion port on iPlayer 2. Appendix A has a diagram of the pin-outs of the Expansion port. Refer to Color Kinetics' website www.colorkinetics.com/Professional Lighting Support/Applications Notes for the technical instructions to develop the appropriate connection.

APPENDIX A

CAPACITY

iPlayer 2 Capacity

iPlayer 2 can store up to 16MB of DMX data, which can be one large show or several smaller ones. The following graph shows the range of show sizes that will fit on iPlayer 2, for shows at 40 frames per second. (40 fps is sufficient for most light shows. Higher frame rates require more memory, and therefore reduce the maximum time that can fit on iPlayer 2.)



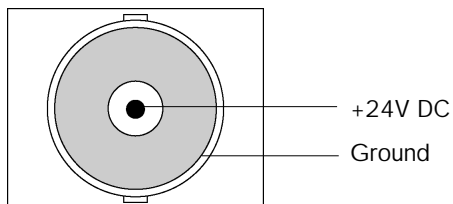
Note: The amount of compression varies according to the effects used in your show. Most shows will fall somewhere between the maximum and minimum compression shown on this graph.

APPENDIX B

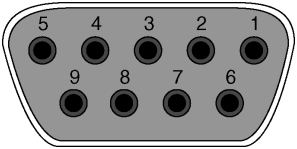
iPLAYER 2 PINOUTS

iPlayer 2 ships with all power and data cables necessary for standard installation. The following information might be useful if your installation requires adapters or custom cables.

Power: BNC



Serial Port: DB9F

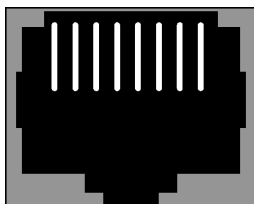


Serial port pinouts

1	No connection
2	TxD
3	RxD
4	+5V DC (when jumper JP1 is installed)
5	Ground
6	No connection
7	No connection
8	No connection
9	No connection

DMX: RJ45-8

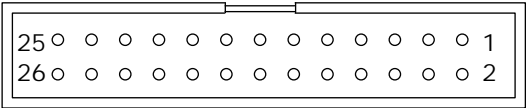
1 —————▶ 8



DMX pinouts

1	Data out -
2	Data out +
3	Ground
4	Data in -
5	Data in +
6	Ground
7	No connection
8	No connection

Expansion: 26-Pin Dual Row .100" Header



Expansion port pinouts

1 Ground	2 Ground
3 Ground	4 Ground
5 Switch 1	6 Switch 2
7 Switch 3	8 Switch 4
9 Switch 5	10 Switch 6
11 Switch 7	12 Switch 8
13 +3.3V DC	14 +3.3V DC
15 Ground	16 Ground
17 Switch Off	18 Switch Up
19 Switch Down	20 Switch 12
21 Spare 1	22 Spare 2
23 Spare 3	24 +5V DC
25 Ground	26 Ground

Switch inputs are intended for dry contact closures. They are internally pulled high, and should be momentarily shorted to ground to signal a change.

WARNING: Do not apply voltage to the switch inputs.

Index

C

- capacity 13
 - DMX data 13
 - frame rate 13
 - storage size 13
- compression 13
- contact closure switch 12
- contact closure switches
 - wiring 18
- controller keypad 11

D

- DMX
 - data 13
 - interface drivers 4
- DMX port 17
- downloading shows 7

E

- expansion port 18
- external control
 - contact closure switch 12
 - controller keypad 11
 - RS232 serial connection 12

I

- installation 4
- installing
 - iPlayer 2 drivers for Machintosh 6
 - iPlayer 2 drivers for Windows 4
 - system requirements 3
- iPlayer 2
 - capacity 13
 - downloading shows 7
 - installation 4
 - overview 1

- pinouts 15

M

- memory 13

O

- overview 1

P

- pinouts 15
 - BNC 15
 - expansion 17
 - RI45-8 17
 - serial port 16
- playback mode
 - playing shows 9
 - switching shows 9
- power 11, 15
- program mode
 - download 8

Q

- QuickPlay 2
 - online help 2
 - overview 2

R

- RS232 serial connection 12

S

- serial port 16
- set up
 - playback mode 8
 - program mode 7
- show size 13
- software
 - system requirements 3

system requirements 3

U

USB cable 4

W

wiring 15