

# **User's Manual**

***USB 3.0 ExpressCard***

## **ABOUT THIS MANUAL**

This manual is designed for use with the USB 3.0 ExpressCard. Information in this document has been carefully checked for accuracy; however, no guarantee is given to the correctness of the contents. The information in this document is subject to change without notice. The manufacturer does not make any representations or warranties (implied or otherwise) regarding the accuracy and completeness of this document and shall in no event be liable for any loss of profit or any commercial damage, including but not limited to special, incidental, consequential, or other damage.

## **SAFETY INSTRUCTIONS**

Always read the safety instructions carefully:

Keep this User's Manual for future reference.

Keep this equipment away from humidity.

If any of the following situations arises, get the equipment checked by a service technician:

The equipment has been exposed to moisture.

The equipment has been dropped and damaged.

The equipment has obvious sign of breakage.

The equipment has not been working well or you cannot get it to work according to the User's Manual.

## **COPYRIGHT**

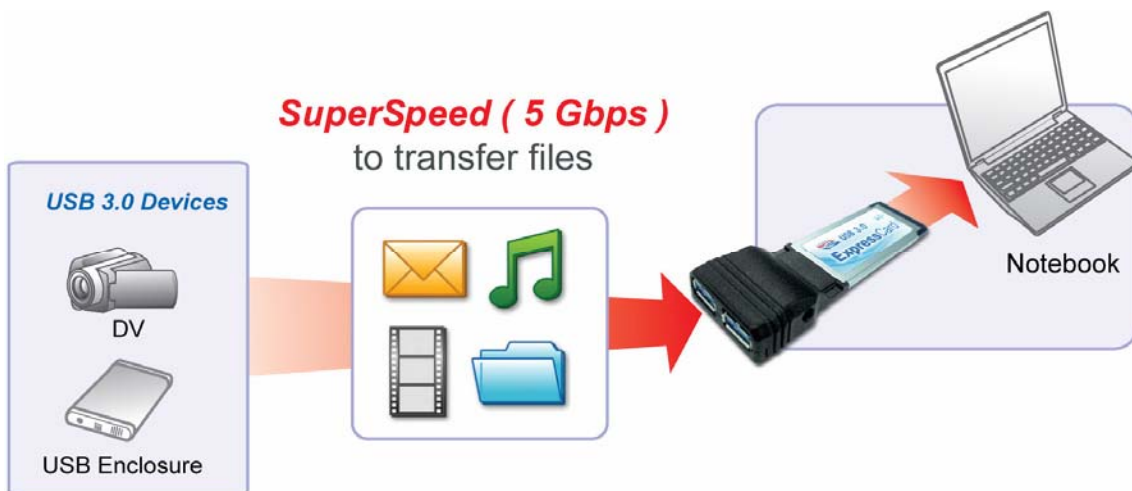
This document contains proprietary information protected by copyright. All rights are reserved. No part of this manual may be reproduced by any mechanical, electronic or other means, in any form, without prior written permission of the manufacturer.

# Table of Contents

|   |           |
|---|-----------|
| <b>1. Introduction .....</b>              | <b>3</b>  |
| Features.....                             | 4         |
| Package Contents .....                    | 4         |
| System Requirements.....                  | 4         |
| <b>2. Installation .....</b>              | <b>5</b>  |
| Windows XP/ Vista/ 7.....                 | 5         |
| <b>3. Hardware Installation .....</b>     | <b>9</b>  |
| <b>4. Installation Verification .....</b> | <b>12</b> |
| <b>5. Notice .....</b>                    | <b>12</b> |
| <b>6. Specifications .....</b>            | <b>13</b> |
| <b>7. Regulatory Compliance .....</b>     | <b>14</b> |
| FCC Conditions .....                      | 14        |
| CE.....                                   | 14        |
| WEEE Information .....                    | 14        |

# 1. Introduction

The USB 3.0 ExpressCard is compliant to USB 3.0 standards and backward compatible with USB 2.0 devices. It also allows you to connect multiple peripherals to your PC at the same time. The USB 3.0 2-Port ExpressCard enhances the performance of transmission that excessively faster than existing USB 2.0 devices. It is the ideal interface for transferring extremely large amounts of data from USB 2.0/3.0 compliant products such real-time video cameras, portable devices and others.



## Features

- ◆ Add 2 ports to USB 3.0 devices.
- ◆ Install easily into any ExpressCard slots of laptops.
- ◆ Supports USB 3.0 transfer rate.
- ◆ Plug and play.

## Package Contents

- |                                      |    |
|--------------------------------------|----|
| ◆ USB 3.0 ExpressCard                | x1 |
| ◆ CD (Driver and User's Manual)      | x1 |
| ◆ Quick Installation Guide           | x1 |
| ◆ USB 2.0 to DC Plug Cable(Optional) | x1 |
| ◆ Power Adapter (Optional)           | x1 |

## System Requirements

- ◆ Windows® -based (Windows®XP, Windows®Vista™, Windows®7) computer with available ExpressCard slot.

Notice: Mac systems do not support this USB 3.0 2-port ExpressCard.

## 2. Installation

You will need to install the driver for your USB 3.0 ExpressCard first. Please follow the procedures as below.

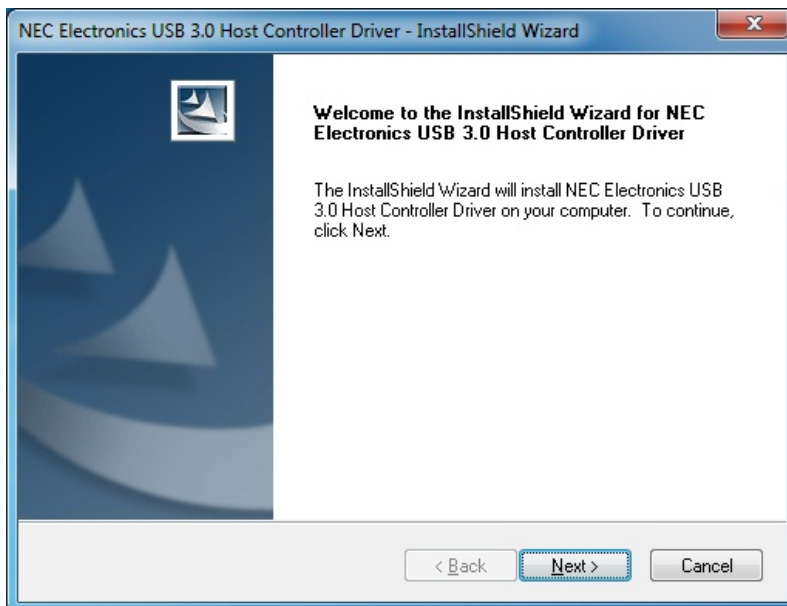
### On Windows XP/ Vista/ 7

To Install the Driver:

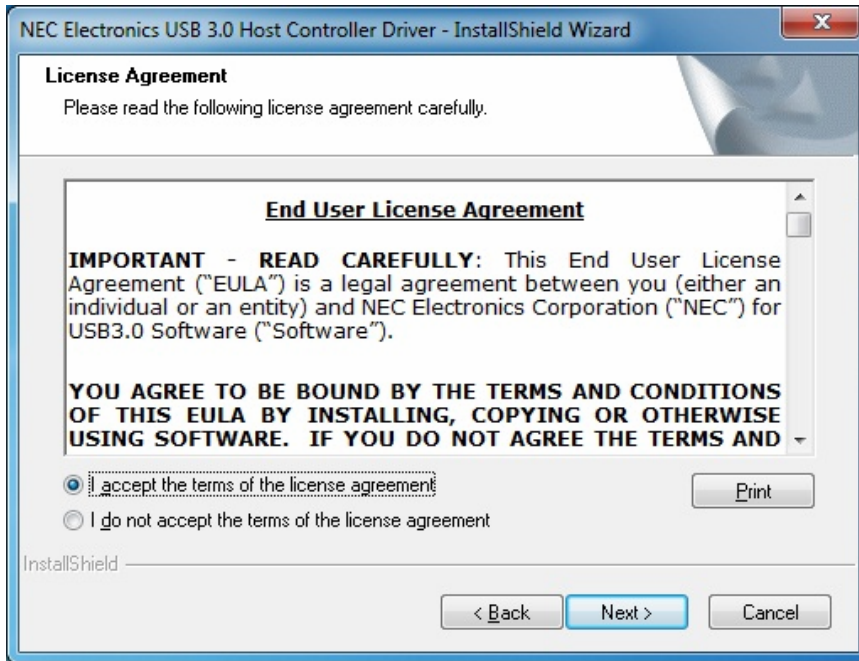
1. Insert the provided CD into CD-Rom locates and double-click the Setup.exe file.



2. When the following screen show up, please click Next to install the Driver.



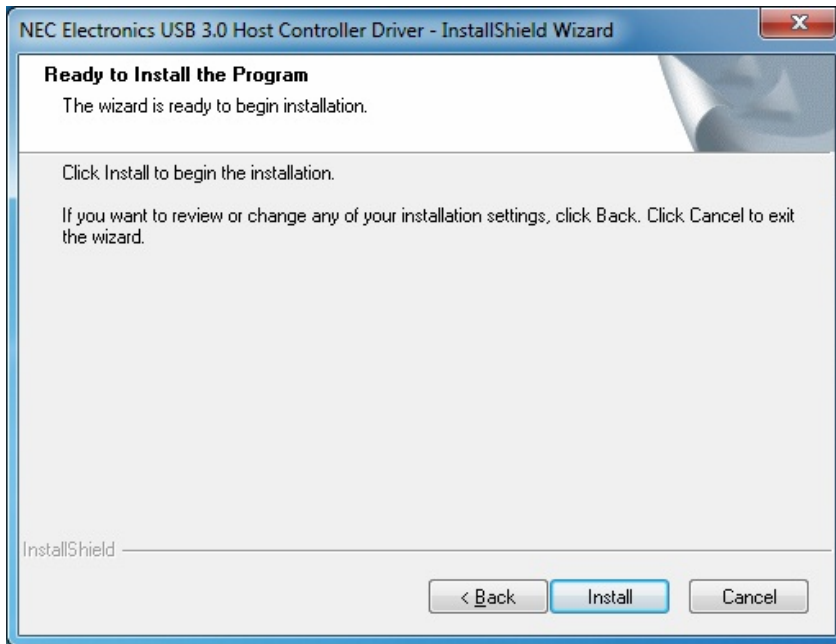
3. After reading End-User License Agreement, please choose “I accept the terms in the License Agreement” and click Next.



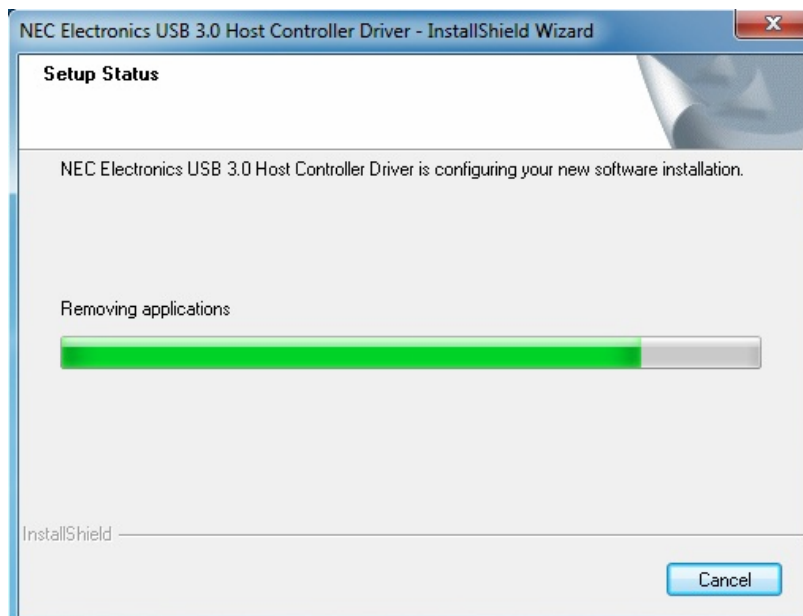
4. Please click Browse to choose the Destination Folder. After that, please click Next.



5. Click Install to install NEC Electronics USB 3.0 Host Controller Driver.

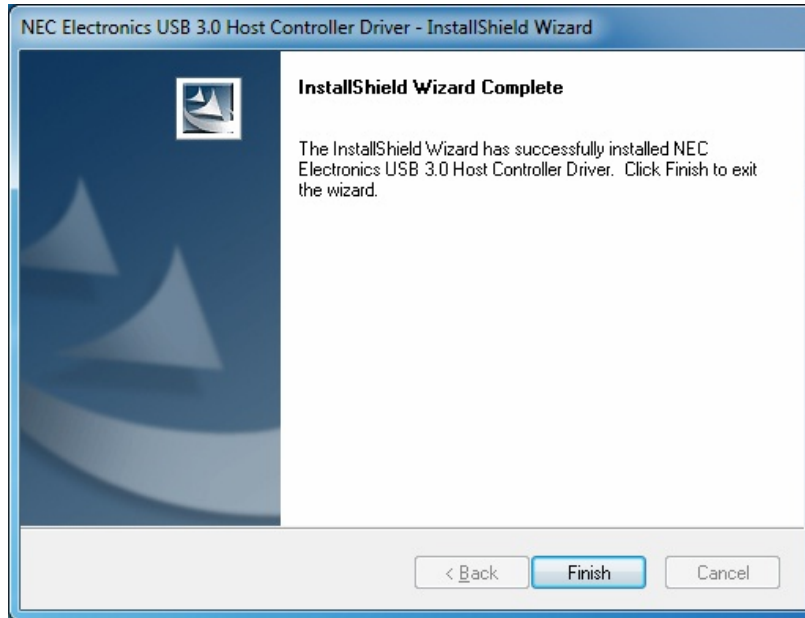


6. It will take a while to install the driver.





7. Please click Finish to complete the NEC Electronics USB 3.0 Host Controller Driver.



*\*Actual strings depend on your operation system. These screen shots are from Windows 7 and might vary slightly for each operation system.*

## 3. Hardware Installation

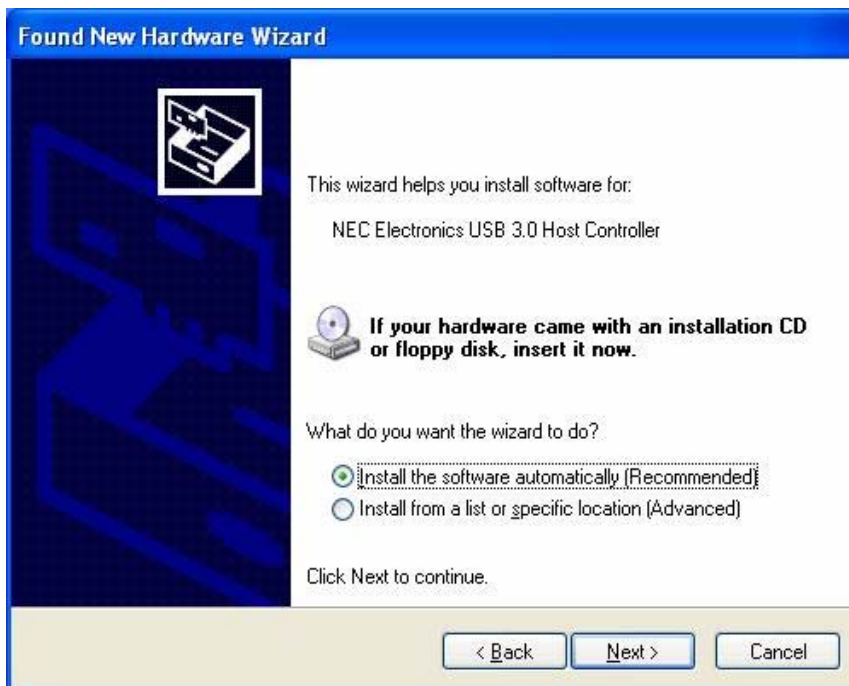
Please find the CardBus port of your system, and insert the USB 3.0 2 Ports ExpressCard into the port. The USB 3.0 2 Ports CardBus Card supports hot-swapping, so you don't need to turn off your system before the installation.

### For Window XP:

- A. When inserting USB 3.0 2 Ports ExpressCard into the port, the following screen will show up. Please choose “**Yes, this time only**” and click **Next**.



B. Please choose “**Install the software automatically**” and click **Next**.



C. Please click Finish to complete the Found New Hardware Wizard.



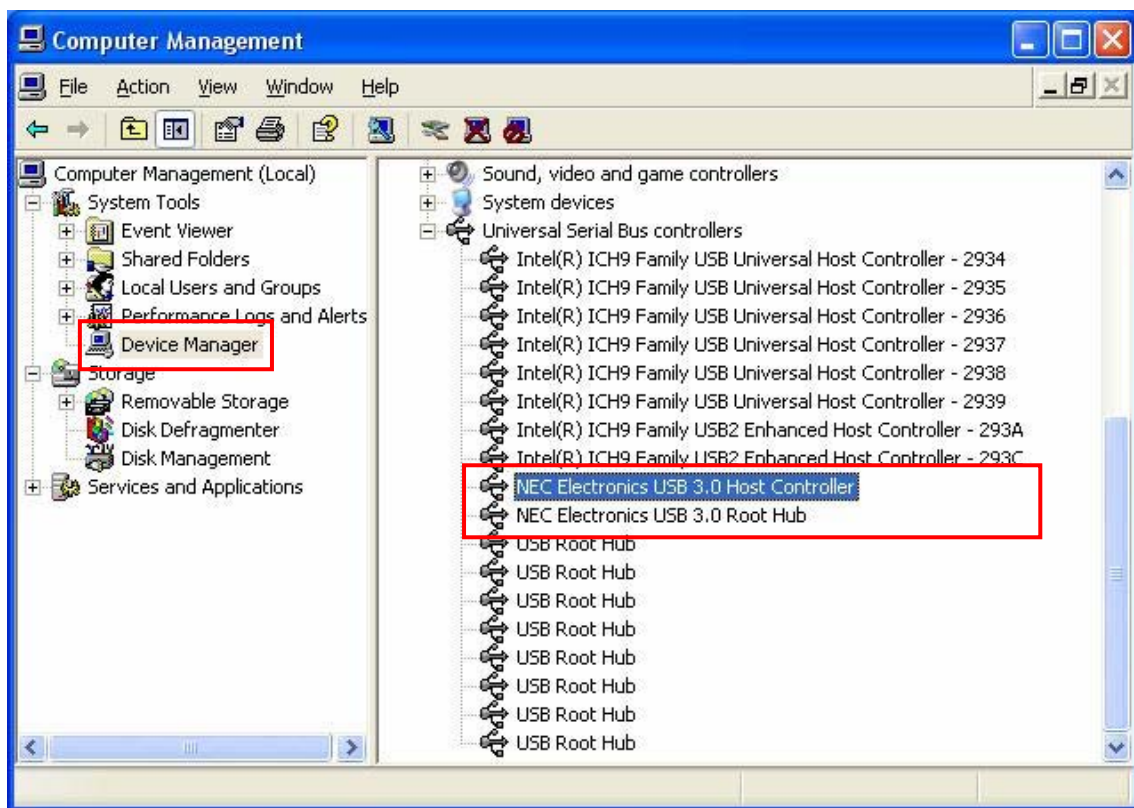
*\*Actual strings depend on your operation system. These screen shots are from Windows XP and might vary slightly for each operation system*

Notice: The Installation of Found New Hardware Wizard will show up twice, please follow the above steps to complete the installation.

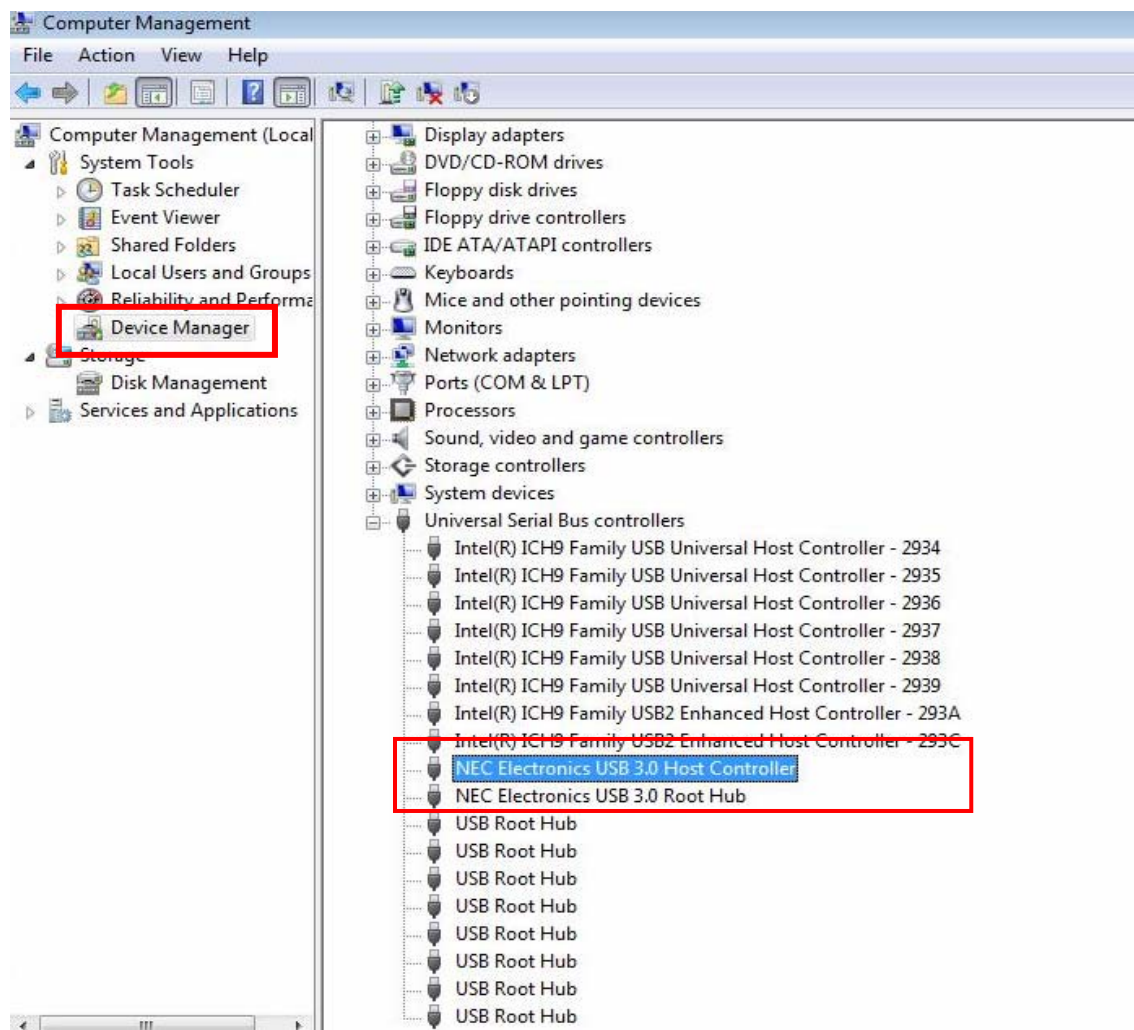
## 4. Installation Verification

After finishing driver installation and plugging this ExpressCard to PC, the system will detect the device. You can go to Device Manager to verify the entire installation.

### Windows XP



## Windows Vista/ Windows 7



## 5. Notice:

- ◆ The **Power Adapter** is recommended to use for high power consumption devices.

## 6. Specification

- Compliant with Universal Serial Bus 3.0 Specification Revision 1.0.
- Supports the following speed data rate as follows; Low-speed (1.5 Mbps)/ Full-speed (12 Mbps)/ High-speed (480 Mbps)/ Super-speed (5 Gbps).
- Supports 2 downstream ports for all levels of speed.
- Supports all USB compliant data transfer type: Control/ Bulk/ Interrupt/ Isochronous transfer.
- Supports ExpressCard <sup>TM</sup>Standard Release 1.0.
- Support Bus Power each port 100mA (Max); Self power by external power adapter: 5V/ 2.5A (each port up to 900mA).

# 7. Regulatory Compliance

## FCC Conditions

This equipment has been tested and found to comply with Part 15 of the FCC Rules. Operation is subject to the following two conditions:

- (1) This device may not cause harmful interference
- (2) This device must accept any interference received. Including interference that may cause undesired operation.

Important! Changes or modifications not expressly approved by the manufacturer responsible for compliance could void the user's authority to operate the equipment. Use an approved phone set.

## CE

This equipment is in compliance with the requirements of the following regulations: EN 55 022: CLASS B

## WEEE Information

For EU (European Union) member users:  
According to the WEEE (Waste electrical and electronic equipment) Directive, do not dispose of this product as household waste or commercial waste. Waste electrical and electronic equipment should be appropriately collected and recycled as required by practices established for your country. For information on recycling of this product, please contact your local authorities, your household waste disposal service or the shop where you purchased the product.

