

Chapter 9 Specification

Item	Android TV Box	
Main function	On-line video(IPTV and OTT TV programs)	Many IPTV programmes, all standard IPTV softwares and popular on-line video websites based on android system, (such as Youtube, Netflix, local satellite TVs, sports, finance, etc) It can also connect to your designated websites.
	Android applications	Support many applications from google play including web browser, google map, 2D/3D games, P2P download, online video chat, email and so on. Support mouse and keyboard; Support FAT16 .FAT32.NTFS file system.
	All formats with Full HD definition	Builds in all formats 1080p high definition decoding. Supports three main HD formats VC-1, H.264, MPEG2-HD together with common formats rm, rmvb, divx ect, Supports more new formats by installing android player.
Video format	1080p/720p/480p multi-format decoding	MPEG1/MPEG2/MPEG4A/C-1/H. 264/Real Video formats including avi, mpeg, vob, mkv, ts, m2ts, wmx, rm, rmvb suffixes and so on.
Photo format	Up to 80M pixels	JPG, BMP, PNG
Audio format	Multi-audio format	Mp3, WMA, WAV, MIDI, OGG, AC3, DTS(some formats need the support of the third party player software.)
Hardware configuration	Main chipset	Dual Cortex A9 1.6GHz
	GPU	Dual Mali - 400
	Memory	1GB - DDR3, 8GB- FLASH (other capacity available.)
Input interface	Storage cards	SD/SDHC/MMC card; Voltage: 2.7-3.3V
	USB interface	Four way 2.0 high-speed output current up to 1.5A/5V. connect with different kinds of mobile devices directly without additional power. Supports hot-plugging.
	Internet interface	Standard RJ45 Internet interface. Support internal wireless Wi-Fi (some other models require additional adaptor)
Output interface	Video	CVBS output (AV output), Standard 3.5mm earphone socket. HDMI interface: HDMI1.4 standard interface.
Others	Remote distance	Effective distance is more than 6 meters.
	Dimension	145X102X32 mm
	Weight	189g
Electric parameters	Video	Range: 1.0V+/-0.1V(750 overload); S/N*55dB
	Audio	Range: 2.0V+/-0.2V(10kQ overload); S/N*85dB
	Electric power	Power supply: 5V DC; Current: 2A.

This specification will be modified if necessary without notice.



Android TV Box User Manual



Preface

Thanks very much for choosing our TV Box. In order to make it more convenient for you to use proficiently, we provide you with a user manual. Please read it carefully before using and properly keep it for reference.

Statements

We have made every effort to provide the most current information about the product.

We do not grant any guarantees as to the contents of the present instruction manual and disclaim any implied guarantees concerning market value or suitability for specific purposes. The information contained here is an instruction intended to enable the correct usage and maintenance of the receiver.

We reserve itself the right to introduce amendments, changes or translations of the user manual without prior notification thereof. For this reason, we recommend you regularly visit our website in order to obtain the latest information.

Contents

Chapter 1 System Introduction	01
1.1 KeyFeatures	01
1.2 Environment for System	01
1.3 Package Contents	01
Chapter 2 Remote Controller	02
2.1 Introduction of Remote	02
Chapter 3 System Connection	03
3.1 HDMI Connection	03
3.2 Startup	04
Chapter 4 Web	06
Chapter 5 Local	07
5.1 Movie List	07
5.2 Music List	08
5.3 Picture List	08
5.4 Filebrowser List	08
Chapter 6 Setting	10
6.1 WiFi	10
6.2 Ethernet	12
6.3 Date usage	12
6.4 More	13
6.5 Sound	14
6.6 Display	14
6.7 Storage	15
6.8 Apps	15
6.9 Account	15
6.10 Location services	16
6.11 Security	16
6.12 Language & input	16
6.13 Backlight & reset	17
6.14 Date& time	17
6.15 Accessibility	17
6.16 About TV Box	18
Chapter 7 Allapplications	19
Chapter 8 Troubleshooting	27
Chapter 9 Specification	28

Chapter 1 System Introduction

1.1 Key Features

- * Android 4.2 operating system with ARM Dual Cortex A9.
- * Support many kinds of IPTV and OTT TV programmes.
- * Support three main HD formats:VC-T, H.264, MPEG-2 and many others normal formats such as MPEG-1, MPEG-2, MPEG-4, DIVX, REALMEDIA and so on.
- * Video formats include avi, mpg, vob, rmvb, mkv, m2ts, ts and so on.
- * Photo formats include JPEG, BMP, and PNG up to 80M pixels.
- * Audio formats include MP3, WMA, WAV, AC3, DTS, AAC and so on.
- * Support SD SDHC MMC cards.
- * Support four USB 2.0 host connectors with maximum output current of 1.5A/5V.
- * Support standard RJ45 cable network connection and wireless network connection, built-in 3D acceleration, can perfect to support 3D games.
- * Support infrared remote controller operation.

1.2 Environment for System

Operation : Temperature limitation: 0-40°C ; Humidity limitation: 20-80**
 Storage : Temperature limitation: -20--50°C: Humidity limitation: 10-90%,

1.3 Package Contents

Accessories	Quantity
Power adaptor	1
Remote control	1
HDMI cable	1
User manual	1

Chapter 2 Remote Controller

2.1 Introduction of Remote



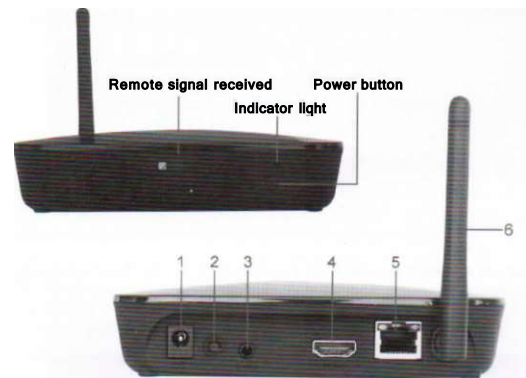
- 1 Power
- 2 Mute
- 3 Start/Pause
- 4 Music
- 5 Network
- 6 Email
- 7 Volume -
- 8 Volume +
- 9 Previous Page
- 10 Next Page
- 11 Home
- 12 Return
- 13 Direction
- 14 Confirm
- 15 Menu
- 16 Virtual mouse
- 17 Number
- 18 App Button
- 19 Delete

Chapter 3 System Connection

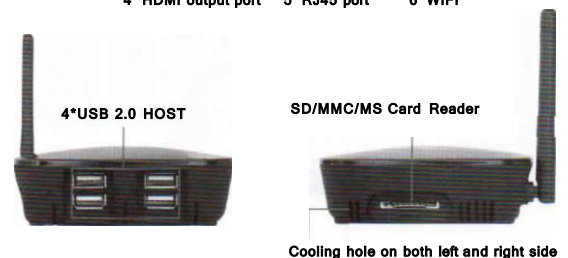
3.1 HDMI Connection

- a. Connect HDMI cable into the product interface, the other side into a TV set.
- b. Power on the TV Box, set TV video mode to corresponding HDMI input.

Connection diagram



- 1 5V DC Port
- 2 RESET Key
- 3 CVBS port
- 4 HDMI output port
- 5 RJ45 port
- 6 WIFI



Cooling hole on both left and right side

3.3 Startup

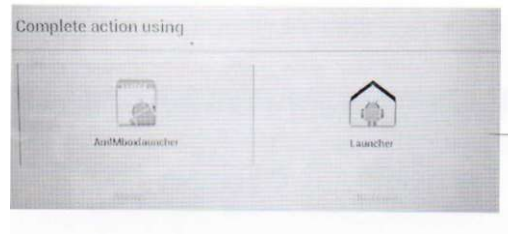
Turn on the TV box while indicator light is blue, about 30 seconds to enter into main menu.



There are two options of launcher. You can choose to enter into different interfaces. Choose Launcher to enter in. Go to the application icon on the upper right corner.



Press Home key on the remote or choose the second icon on the lower left corner to choose another launcher interface.



Choose AmIMboxlauncher to enter in. Here is another interface.



Chapter 4 Browser

Move to "Browser" icon, press ok to enter into website list.



There are many websites for your reference. It includes Browser, Famous, Entertainment, Sports, News and Car. You can choose your favourite websites and enter into the website directly. Notice: please go to the system setting to set the Internet connection before entering into the website.

Chapter 5 Local

Move to "Local" icon, press ok to enter into Local Apps list.



5.1 Movie List

Move to "Media Player", press ok to enter into movie list.



This is for local media player. Choose your desired device and play videos you like.

5.2 Music List

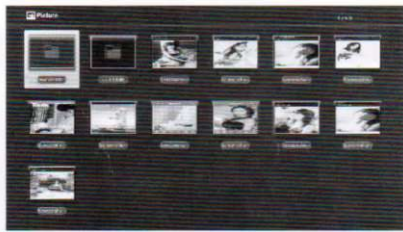
Move to "Music Player", press ok to enter into music list.



This is for local media player. Choose your desired device and play music you like.

5.3 Picture List

Move to "Picture Player", press ok to enter into picture list.

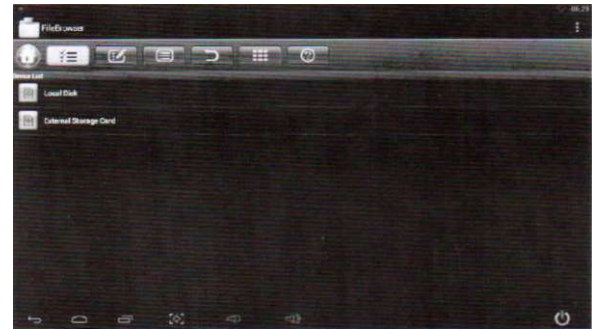


This is for local media player. Choose your desired device and play photos you like.

5.4 Filebrowser

Move to "Filebrowser" icon, press ok to enter into device list.

When inserting with USB device or SD/SDHC/MMC cards, there will show "device is mounting".



This is for local media player. Choose your desired device and play video, music or photo you like. You can edit on the up column.

Chapter 6 Setting

Move to "Setting" icon, press ok to enter into system setting. You will see the menu on the following picture.



Press ok to choose your Wi-Fi network and enter with your password.



6.1 Wi-Fi

Move to "Wi-Fi", turn on the Wi-Fi network from the upper right corner. System will start scanning available Wi-Fi networks around you automatically.

After authenticating IP address, when connected is shown, Wi-Fi is available now. Notice: Sometimes Wi-Fi is not stable. If Wi-Fi connecting is fail, please try again.

6.2 Ethernet

Move to "Ethernet", turn on the Ethernet configuration from the upper right corner.

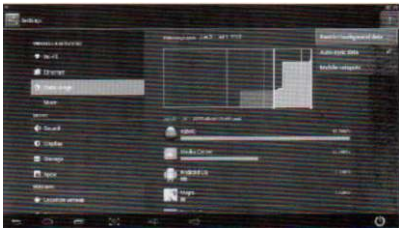


Choose "Save" to finish Ethernet configuration.



6.3 Data usage

Move to "Data usage", it is a way to account apps used data on the box for your reference.

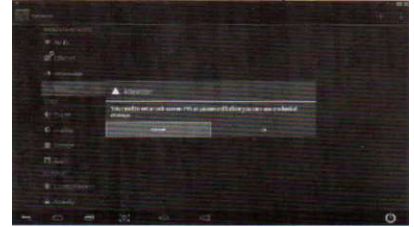


6.4 More

Move to "More",press ok to set VPN and Proxy settings.



Here is the setting of VPN. You must set a lock screen PIN or password before you can use credential storage.



Here is the setting of Proxy.



6.5 Sound

Move to "Sound",press ok to set the system volumes.



6.7 Storage

Move to "Storage",press to enter into system storage interface.You can read the internal storage and external device storage from here.



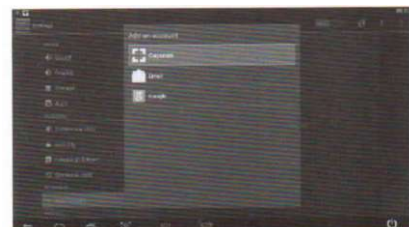
6.8 Apps

Move to "Apps", press to enter into system apps working interface.You can find the apps working situation from here. Pre-installed XBMC, enable you play 1080p videos in XBMC.



6.9 Account

Move to "Account".press to enter into accounts .You can add account from the upper right corner.



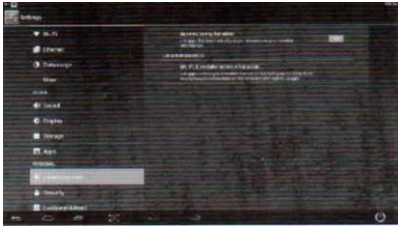
6.6 Display

Move to "Display",press to enter into system display settings. There are four functions including Wallpaper,Output mode,Display position and Font size.



6.10 Location access

Move to "Location access", press to enter into Google's location service setting.



6.11 Security

Move to "Security", press to enter into system security menu. There are three functions including Passwords, Device administration and Credential storage settings.



6.12 Language & input

Move to "Language & input", press to enter into Language and input setting. You can set keyboard and input methods, text-to-speech output speed and mouse pointer speed.



6.13 Backup & reset

Move to "Backup & reset", press to enter into factory data reset. You can erase all data on the



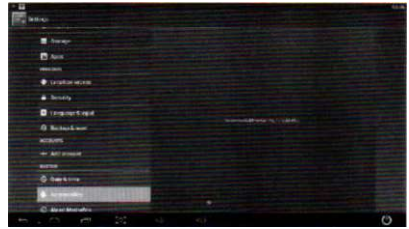
6.14 Date & time

Move to "Date & time", press to enter into date and time settings. You can change the time format and date format here. You can choose automatic function for the date and time setting.



6.15 Accessibility

Move to "Accessibility", press to enter into accessibility settings including services and system.



6.16 About MediaBox

Move to "About MediaBox", press ok to enter into TV box information.



Chapter 7 Allapplications

Move to "Allapplications" icon, press ok to enter in.

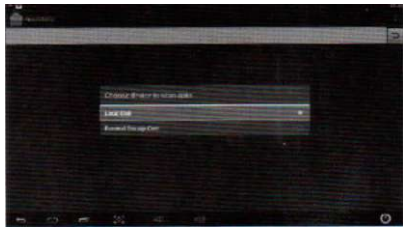
You can see icons referring to different functions on the picture.



AppInstaller: move to "AppInstaller", press ok to enter in.



You can install softwares by this appinstaller function. Please first download your desired softwares by apk formats from computer to USB device. There will appear a column to choose device to scan apks.



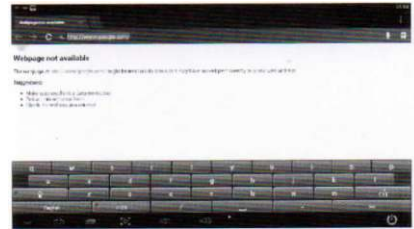
Press ok to choose your desired software to install. After finished installation, the software icon will be show on the allapplications menu.



Browser: move to "Browser", press ok to enter in. It is a direct way to go to your desired website.



A keyboard will pop up, input with your desired website address, press" ok" to go to the website.



Calculator: move to "Calculator", press ok to enter in. It is a simple calculator for arithmetical workings.



Calendar: move to "Calendar", press ok to enter in. It is a direct way to view the date from the calendar.



Pre-Installed XBMC

With XBMC add-ons, you will get amazing media center experience.



Clock: move to "Clock", press ok to enter in. It is a direct way to see time from here and set the clock.



Downloads: move to "Downloads", press ok to enter in.
You can check the status here when downloading apks from internet.



Email: move to "Email", press ok to enter in.
It is a direct way for you to send and receive email of your account.



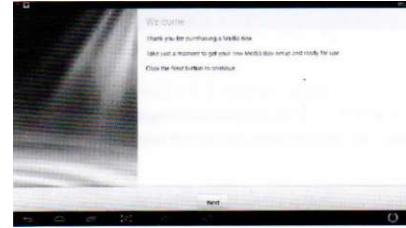
You can configure Email for most accounts in just a few steps. Move to Email address, press ok to input your mail address and password. Follow the icon "next" right under the button to finish setting.



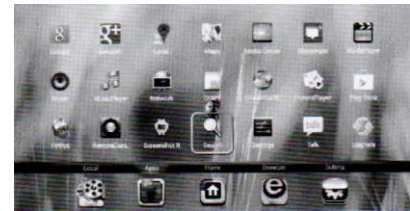
OoBE: move to "OoBE", press ok to enter in.
It is a direct way to refresh the system on the TV Box.



Press next to finish the setting.



Search: move to "Search", press ok to enter in.
It is an option to search message in local and from Internet.



For example, when you input with a letter "g". There will search out a result of relative letter "g" in local.



Upgrade: move to "Upgrade", press ok to enter in. It is a system update function.
Insert with update software on the SD card, click "Upgrade" icon to choose local upgrade. After upgrade finished, system will restart automatically.



Chapter 8 Troubleshooting

Warning

Under no circumstances should you try to repair the TV Box by yourself, as this will invalidate the warranty. Do not open the TV Box as there is a risk of electric shock. If a fault occurs, first check with points listed below before taking the TV Box for repair. If you are unable to remedy a problem by following hints, consult your dealer for help.

Problem	Solution
No power	-Check if the power adaptor is properly connected to the power and the TV Box. -Press the power on the remote controller to turn on the power.
No picture	-Reconnect with HDMI cable or AV cable. -Check if the TV is switched on.
No sound or distorted sound	-Adjust the volume. -Check that the speakers are connected correctly.
The box does not respond to the Remote Control	-Aim the remote control directly at the sensor on the front of the TV Box. -Reduce the distance to the TV Box. -Replace the batteries in the remote control.
Player does not respond to some operating commands during playback	-Operations may not be permitted. Refer to the user manual. - Possibility of system halted, re-insert with power adaptor to restart.
No sound during movies playback	-The audio codec may not be supported by the TV Box. You can change to the supported audio on playing menu. -Check the volume.
The contents of the USB flash drive cannot be read	-The USB flash drive format is not compatible with the box. -If one of the USB can not be read, please turn off the TV Box for 30 seconds and restart the TV Box.
Slow operation of the USB flash drive	-Big file size or high resolution USB flash drive takes longer time to read and display on the TV screen.
No sound with HDMI connection	-Check the connection between the TV and the HDMI jack of box. -Check your TV system setup. -Check the volume.
The TV screen is blank and the player LED is blinking	-Turn off your TV Box. wait 30 seconds, turn it on again. -if under HDMI status, check if HDMI connection is correct or change another HDMI cable, set the output resolution of this TV Box into 720p.