

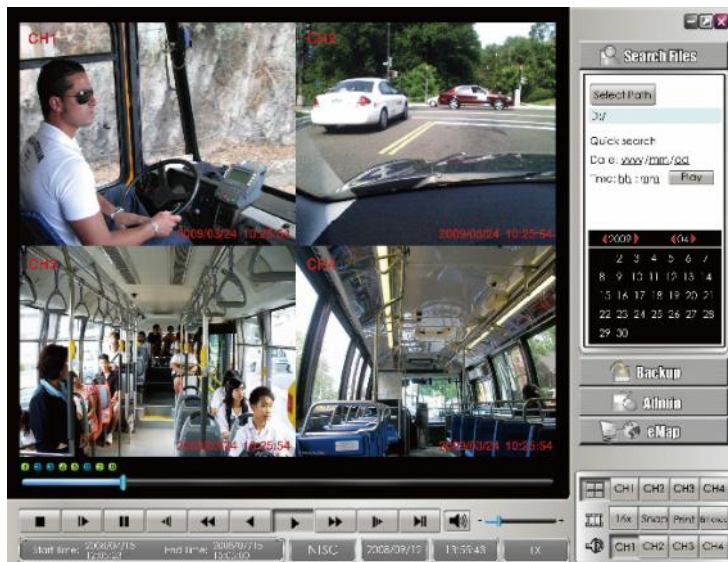
4CH Mobile DVR + GPS features

Features

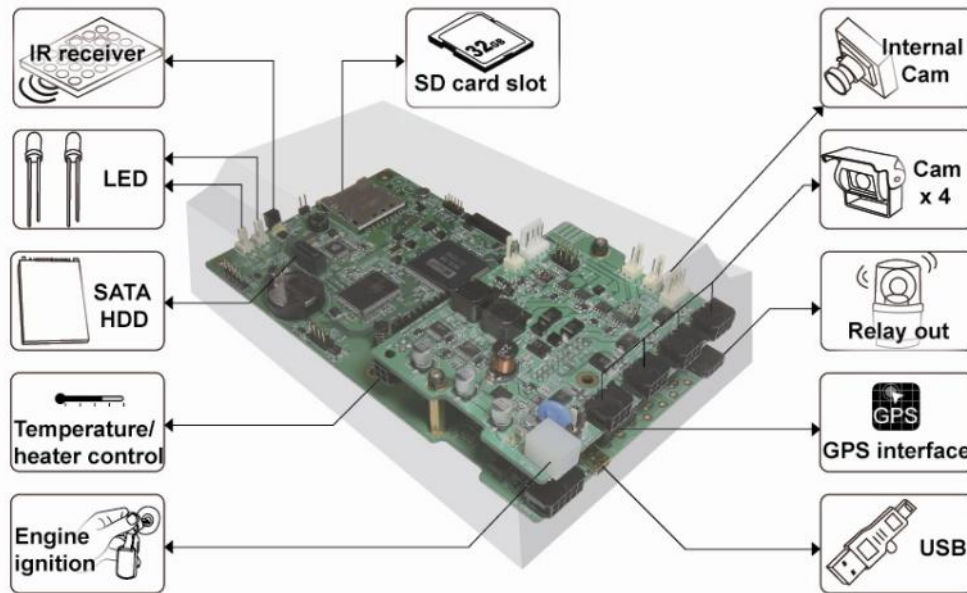
- ✓ 4-ch video and 4-ch audio input
- ✓ Total frame up to 60fps (NTSC) / 50fps (PAL) user selectable individually
- ✓ Dual codec : Mpeg-4-like and Mjpeg
- ✓ Security video encryption
- ✓ GPS features : vehicle speed, location, time sync, eMap link
- ✓ Hi-resolution recording at D1 on each channel
- ✓ Removable HDD tray for ease of recordings retrieval
- ✓ Support 2.5" HDD 500GB+, SD card 32GB
- ✓ Temperature control for cold environment and HDD protection (optional)
- ✓ Engine ignition for system power on/off control
- ✓ Start delay for HDD protection and stop delay for prolonged recording
- ✓ Anti-vibration design for SD card and SATA HDD storage
- ✓ Single cable design for powering camera, video & audio input, which makes installation easier and cost of installation lesser
- ✓ Wide range voltage from DC12V~30V and supply DC12V for cameras
- ✓ Power surge protection up to 40VDC
- ✓ Backup: USB drive/ SD card / Software via PC
- ✓ Motion detection/ schedule / 8 sets of external trigger input
- ✓ LED indicators for status of system, GPS, and SD storage



Software



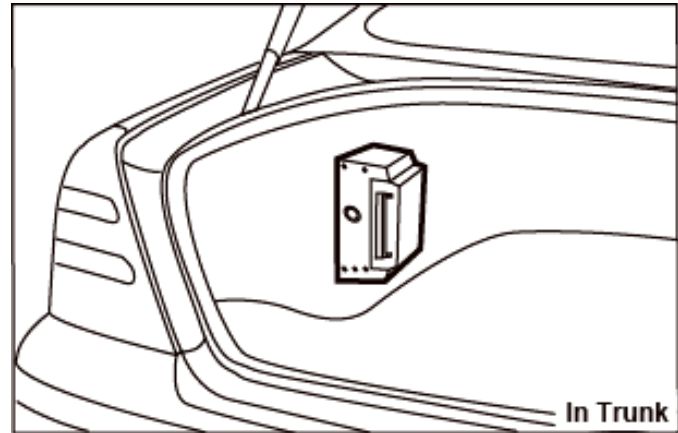
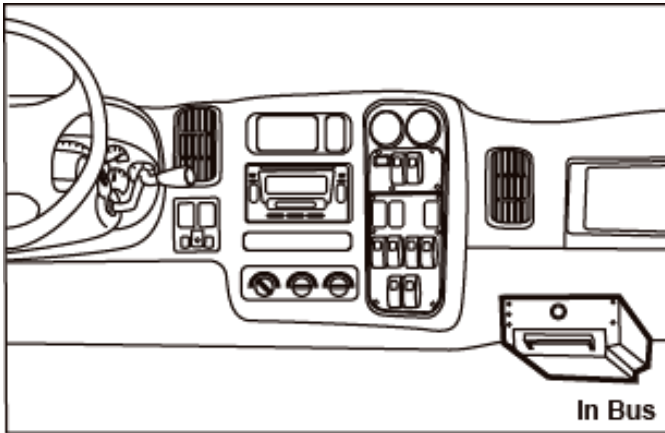
- User friendly software playback 4ch simultaneously or selected channel
- Video quick search or event list search
- Vehicle speed and location eMap linking
- 8 sets of event indicators
- Double click the selected recording file to playback
- File converting : DVR /AVI /JPG / WMV
- Digital zoom in and out 3x
- Manageable user authority level



Specification

Video Compression	MPEG-4 Like / Enhanced JPEG
Video System	NTSC/PAL (Auto detect)
Video Resolution	720x480 (NTSC) / 720x576 (PAL)
Frame Rate Per Second	Up to total 60 fps (NTSC) / 50 fps (PAL) selectable
Video Recording Mode	Schedule continuous, schedule motion, schedule trigger
Video Recording	4 input, 1 output, 3 Level Quality adjustable
Audio Recording	4 input, 1 output
Alarm Input	8 sets external trigger interface
Relay Output	1 Relay output
Motion Record	192 grids and sensitivity can be select
Event Recording	Post-event: 5 seconds; Pre-event: 2 seconds
Time/Date Stamp	Yes, format and position adjustable
RTC Battery	Lasts for 3 months w/o power supply
Power Supply	12~30VDC
Power Output	12V 300mA * 4 for cameras / 12V 200mA * 3 reserved
Storage Media	SD (support SDHC) up to 32GB and 2.5 " SATA HDD up to 500GB
Control	IR remote control
GPS	Yes, RS232
Current Consumption	500mA (5V, for the main board)
Firmware Upgradeable	Yes, through SD card or USB drive
Backup	USB drive backup, SATA HDD to SD card backup, or software backup on PC
Operating Temperature	-30~+70 °C (with temperature control)
Dimensions	180x100mm (main board) + 76x100mm (power board) 136x201x71mm(metal case)
Playback Recording	Via device itself or bundled software on computer
Computer Requirement	Dual core CPU computer with 1GB memory or above

How to use



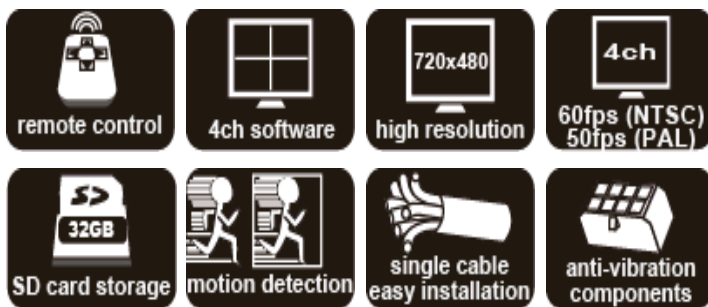
- a. Connect DVR with cameras. (4-ch input externally)
- b. Insert your high capacity SD card or 2.5" SATA HDD.

- a. Remote controllable DVR and OSD.
- b. Record onto removable high capacity SD card or 2.5" SATA HDD.



- a. Remove the SD card or 2.5" SATA HDD and insert into any computer to playback video.

- a. 4ch playback simultaneously.
- b. File quick search
- c. Easy Backup
- d. Manage user authority level
- e. eMap function



Package Contains

- Main unit x 1
- Removable HDD tray x 1
- GPS antenna x 1
- Cable accessories x 1
- Remote control x1
- CD-ROM (including user Manual, bundled software) x 1
- Temperature sensor (Optional)
- Heater (Optional)