



THERAPEUTIC APPARATUS  
CD-9X  
USER`S MANUAL

WSI INTERNATIONAL LIMITED, China



Thank you for purchasing our product——Haihua Quick -Effect Therapeutic Apparatus. In order to make it into full play , we recommend you to read this manual carefully and completely.

**Content**

Brief Introduction -----	(2)
Indication -----	(3)
Name and Function of Each Part-----	(4)
Technical Data -----	(7)
Notice for Operation-----	(8)
Operation of Treatment-----	(9)
Diagnosis Principle-----	(12)
Method and Procedure of Diagnosis-----	(13)
Introduce of Method of Diagnosis-----	(15)
Diagnosis Skill-----	(16)
Introduction of All Kinds of Electrodes-----	(17)
Method of Using All Kinds of Electrodes-----	(18)
Safety Requirements-----	(19)
Forbid Treating Disease-----	(21)
Simple Trouble Check-----	(22)
Accessories Attached-----	(23)
Electrical Diagram-----	(24)

### **Brief Introduction**

CD-9X Haihua Quick Result Therapy Apparatus is a new CD series products . It is a physiotherapy instrument with its synthetic function of magnet and electricity based on traditional Chinese medical science about the state of internal organs , meridians , and the modern electronics .

Combining magnetic and electrical treatment , acupuncture , cupping and massage as one , patients will get a synthetic while electrodes touch their acupuncture points . Its most striking characteristic is " Treatment Quickly " , one treatment takes only dozens of seconds to a few minutes .

The apparatus is portable , provided with fluorescent indication screen , It brings about organic constitute of both treatment and diagnosis function . Whole apparatus provided with every form treatment electrodes , In a treatment , as per the difference patient's concrete condition , the many kinds of electrodes are placed to the relevant acupuncture points in curative function , can treat by oneself . Better result could be achieved , it is easy to operate , electricity -saving without limitation of external conditions . Its great advantage is no skin harm , nor cross infection . It is a ideal physiotherapy apparatus of family ,clinic and hospital.

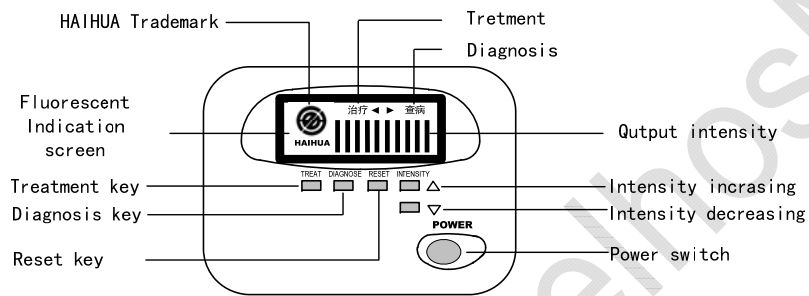
### **Indication**

Haihua apparatus applies to Cold , Hypertension , Diabetes , Bronchitis , Gastroenteritis , Gastritis , Arthritis , Cervical Vertebra Disease , Scapulohumeral Periarthritis Prolapse of Lumbar Intervertebraldisc , Stiffness Prostatitis , Indigestion in Children , Dysmenorrhoea , Pelvic Infection , Insomnia , Facial Paralysis , Rhinitis , Toothache , etc .

## Name and Function of Each Part

Before using the apparatus , please know well about every part of it and operate it correctly so as to achieve the best therapy result.

This apparatus is made up circuit plate module , power module , fluorescent indication screen , apparatus housing , treatment electrode , etc.

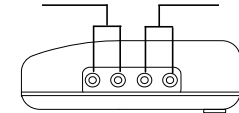
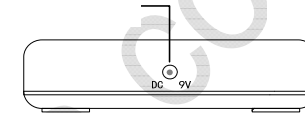


4

D.C socket

output I

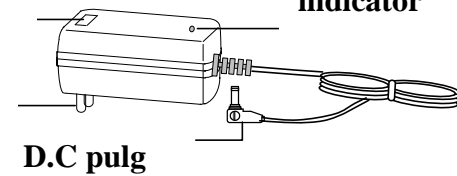
output II



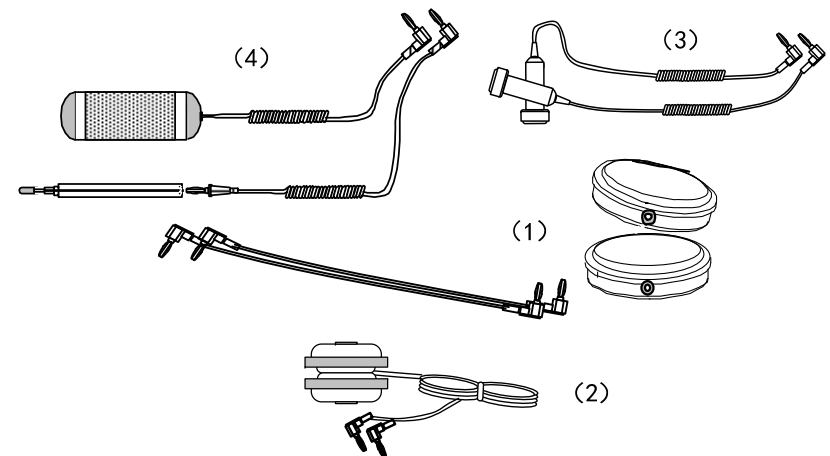
cover of fuse box

indicator

power plug



D.C plug



5

"POWER" means power switch , press once , the apparatus is on , press again the apparatus is off.

"TREAT" means treatment , press this key , the apparatus is on treating.

"Diagnose" means diagnosing disease , press this key , the apparatus is on diagnosing disease.

"RESET" means reset , press this key , output intensity will be decreasing to 0 , achieve function of reset.

"INTENSITY" means to adjust output intensity , press "▲" or "▼" key to increase or decrease the output intensity , press once to increase or decrease one degree .

The trip indicator at the middle part of indication screen means output intensity . The more the stronger , otherwise , the fewer the weaker .

### Technical Data

Breakdown products : Classify this product according to beating of electricity , It belongs to class II common device and may be carried.

Power Source : A.C 220V  $\pm$  22V 50Hz  $\pm$  1Hz

A.C 100V/110V/240V  $\pm$  10% 50/60Hz  $\pm$  1Hz

Load resistance : 500  $\Omega$

Electric power :  $\leq$  15VA

Output wave form : audio pulse wave

Output frequency : 400Hz-2000Hz

Magnetic field intensity :  $\geq$  0.1T , max  $\leq$  0.3T

Output Voltage : 0-75Vp-p , max  $\leq$  100Vp-p

Net weight : 750g

Overall dimensions : 165 $\times$ 120 $\times$ 41mm

Use environment : Temperature 5 $^{\circ}$ C-40 $^{\circ}$ C ; humidity  $\leq$  80%

Transport environment : Temperature-40 $^{\circ}$ C-55 $^{\circ}$ C ; humidity  $\leq$  90%

Implement Standard : YZB/Liao 0035-2003

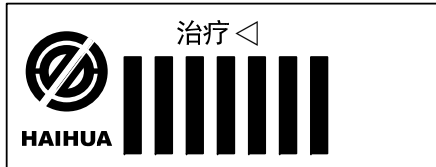
### Notice for operation

- a. Before using the apparatus , please read the manual carefully.
- b. Please take off the special regulated power supply while treatment is finished.
- c. When the apparatus's power switch is on , please don't contact one electrode with the other , or the apparatus may be damaged.
- d. Please take good care of the leads of electrode, so as not to bread them. It's recommended to hold the plugs down wards to pull them out after treatment. Don't pull up the electrode leads. Please remove gauze to prevent electrodes from being rusted.
- e. Avoid the electrodes falling to the ground and contacting overheat object , so as not to weaken the magnet of the electrodes.
- f. Keep the electrodes away from electrical equipments ( eg.TV set and watch ) as the magnetic properties of the electrodes can damage these items.
- g. Please observe safety requirements in the manual.
- h. Should stop using move telephone and other electrical device around this apparatus at treating , prevent disturbing this apparatus.

### Operation of Treatment

- ※ Before using , the gauze wrapped up electrodes should be disinfected with alcohol. Should of change the gauze.
1. Bind up the ends of all kinds of the electrodes with 3 layers of gauze before treating , put on the ring and press taut , soak all gauze ends of the electrodes with clean water or with lake warm water in winter.
  2. Press the power switch (POWER) key , at this time , there are Haihua Mark and "HAIHUA" on the indication screen.
  3. Press down the key of power switch , at the moment , "treatment" indicate and words will be shown on middle of screen. At this time the apparatus is on treating. In general , when power switch of the apparatus is turn on , output intensity is o , strip indicate lamp is not bright.





4. According to 《Guide for Treatment 》 or acupuncture indication , put the two electrodes on the patient's acupuncture point , in addition , you could also put the electrodes on the Ashi acupuncture points , treat where a pain is.

5. Choose the position where need treat , press the key "▲" of output intensity increasing , output is gradually increasing ( from no output to first indicate light bright ) , strip indicate light is get brighter and brighter. When decreasing output intensity , press the key "▼" of output intensity decreasing.

6. The output intensity is determined by the patient's feeling. generally speaking , a comfortable numbness is the best. When finished a group of acupuncture point , should regulate the key of output intensity decreasing to no bright ( the smallest ) or press the key of " RESET" , then begin to treat the next group of acupuncture points.

Warning: when regulating output , should beat the key , not pressing long time , otherwise , output is increasing faster and faster , patient can't bear.

7. Under general , treat one time every day. The treatment of every group of acupuncture point is about 5~10 minutes , 5~7 days is a course of treatment. Therefore , may according to patient's situation , lengthen or shorten properly treatment time.

### Diagnosis principle

The Chinese Medicine thinks that hand is a window of human body , hand is portraited of whole body. Variations of skin electrical phenomenal where is in internal organs or mericlians has certain regulation. When there is an organ of the human body falls ill , there is evert kind of reaction on the homologous area in hand inevitable relevant , electric conductivity of veins and arteries will tade place variety also , for example. It can appear pathologic and appear pathologic and physiology phenonmenon etc of sensitire to electromagnetism , stimalat skin electric resistance lower.

Though then not painful , impassability then painfull. Any user had certain Chinese Medicine Science knowledge just may diagnose preliminary the disease from object of diagnosis , with the aid of hand electrode and diagnosis pen , touching acupuncture points of hands of the object of diagnosis , according to the level of tingling sensation and apparatus , check against 《hand diagnosis diagram》 look at "Method and guide of diagnosis ".

### method and procedure of diagnosis

- 1、 Under "treatment" state , regulate output intensity from 5~7 indication ( according to the skin sensitivity for object of diagnosis ).
- 2、 Insert the probe electrode and diagnosis pen into output socket I or II. Press the "DIAGNOSE " key , change it to "DIAGNOSE " state .
- 3、 When diagnosing , the palms for object of diagnosis ought to be wet first , then put the diagnosis electrode in one hand , and stretch other palm to wait diagnosing(without the difference between man/women or left/right ).

4、 Touching the skin of different part of the palm with the diagnosis pen , if there is no sense of numb , when it touches some part , the indicator of output intensity will indicate nothing as a result, and no disease of the part of body can be inferred. If the sense of numb is obvious after touching some part, the intense light of the indicator will show you the conclusion that there is disease or illness. According to the diagnosis diagram , you will find what the disease is.

5、 If you encounter complicated cases , and are hard to decide , please compare two palms with each other and repeat the above diagnosing process . If there is thick callus on the palm , will be influence diagnosis accuracy.

### Introduce of method of diagnosis

1、 Diagnosis method of hypertension and hypotension.

On probing root of middle finger+hypertension point+coronary heart point+dizziness point.

If there is strong numb feeling on this four points output intensity indicate increased , then you may diagnose , it is hypertension or hypotension.

2、 Diagnosis method of stomachache

On probing thumb Weijing area+centre of palm stomach area

If there is strong numb feeling , output intensity indicator increased , then you may diagnose.

3、 Diagnosis method of tumour

On probing tumour area+tumour area+viscera

If there is strong numb feeling at the points , output intensity indicator to 8-10 light , at the moment , it may be diagnosed tentatively.

4、 Diagnosis method of diabetes.

Diabetes point+diabetes+blood sugar

If there is strong numb feeling in this three points , output intensity indicator increased , then check symptom of object of diagnosis , you may diagnose preliminary.



## 5、Diagnosis method of neurasthenia

On probing Xinjing area+neurasthenia point of middle finger+tired point+insomnia point +many dream point.

If there is strong numb feeling in this five points , output intensity indicator increased , then check symptom of object of diagnosis , you may diagnose preliminary.

### Diagnosis Skill

A beginner should know well distribution of palm acupuncture point and distribution area of common disease. First , a testing begins at the position of Huatuo Jiaji acupuncture point of backbone , on a hand , the Huatuo Jiaji acupuncture point of backbone is at 0.3cm of the both sides along the red/white muscles centre line along the cervical vertebra , thoracic vertebra and lumbar vertebra. Probing from cervical vertebra , thoracic vertebra , left leg , right leg , right leg and external up on , then probing the "jingluo" of fingers. According to the sense of numb intensity and the intense light of the indicator strong , then there is directed against probing major position.

### Introduction of all kinds of electrodes

1. Thick and round electrode [page5 picture (1)] is used on the abdomen ,back, waist and buttock of the human body.
2. Middle round electrode [page5 picture (2)] is used on arms, legs and sole of the human body. Fix it on the acupuncture point with binder.
3. Pillar electrode [page5 picture (3)] is used on face, head and other parts of the human body.
4. Diagnosis electrode [page5 picture(4)]:.Diagnose disease of human body through circulation system both of hands.  
(Treatment time is 5 — 10 minutes with every group of acupuncture points)  
Treatment disease , please refer to 《Guide for Treatment》 .

### Method of using all kinds of treatment electrodes

1. Before using , the gauze wrapped up electrode should be disinfected with alcohol.
2. Bind up the ends of all kinds of the electrode with 3 layers of gauze. Put on the ring and press taut.
3. Soak both gauze ends of the electrodes in clean water or with lukewarm water in winter.
4. Insert both plugs of electrodes in the output socket on the right side , guarantee good contact.

### Safety Requirements

※ The special regulated power supply applies to A.C220±22V or D.C9V 500mA power , other power is forbidden.

1. When you use the apparatus , please obey doctor's instruction. If abnormal body reaction appears during the treatment , stop using it at once and listen to the doctor's advice.
2. The patient in poor health and old people accepting treatment first time , should treat Neiguan acupuncture point 1-2 minutes at first , after calm and soothe the nerves , then go on the other acupuncture point.
3. When treatment, should avoid the part of ulcer or broken of the skin.
4. It is warned that the part of treatment should avoid metal contact. Don't use the apparatus during a thunderstorm.
5. Take care of the leads of the electrodes , should damaged forever falling to the ground and contacting overheat object in use. When put down the electrodes from this apparatus , should hold the plug , don't pull the wire of the electrode , after treatment , please move off gauze to avoid electrodes getting rusted.

6. Don't put this apparatus near heat radiation installation , keep it away from rain and moisture.

7. The users themselves can't fix the internal parts of the apparatus , you should have it repaired by the specialized personnel.

8. Stop using the apparatus or cleaning it , should turn off power switch , pull out power plug and don't pull the wire , please keep your hands dry.

9. There is strong magnet in the electrode , you should put it away from TV set , magnetic card , magnetic disc , magnetic tape and watch etc , avoid that these were damaged.

10. When the power switch is turned on , do not contact one electrode with the other , or it likely damages the apparatus.

11. The method of power connection: Insert D.C mains of the special regulated power supply into D.C input socket of the apparatus , and then insert A.C mains of the special regulated power supply into A.C power socket ,the light on the special regulated power supply is on.

12. The method of electrodes connection: Insert the electrodes into I or II socket.

13. The method of Changing fuse: Pull off the special regulated power supply from power and then open the cover of fuse box with screwdriver , replace the old one with RF  $\phi$  5×20-0.1A fuse.

### Forbid Treating Diseases

1. Patients with cardiac pacemakers are forbidden to use the apparatus. Stop putting directly the electrode on front area of the heart.

2. Patients with internal metal accessories as steel plate , steel nail are forbidden to use (except woman's contraceptive ring). If need treatment , may take acupuncture points longrange.

3. Patients of cerebral haemorrhage acute term are forbidden to use , after the patient's condition was stable , just may treat in convalescence.

4. Pregnant woman and perid woman should use it carefully according to the doctor's advice.

5. Patients of acute abdominal disease should use it carefully according to the doctor's advice.

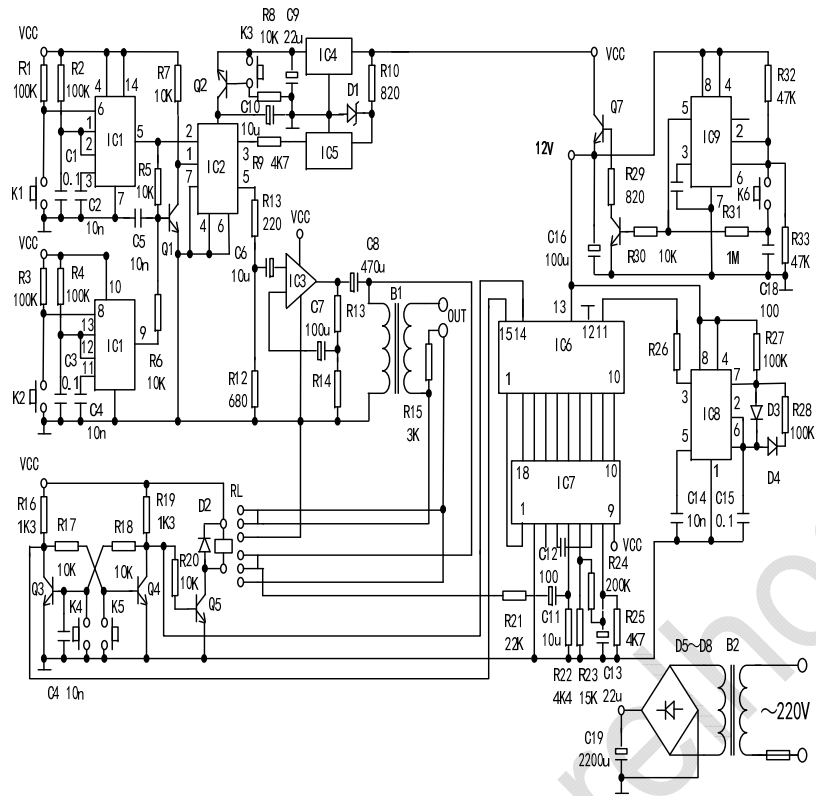
6. People who's skin was ulcer or damaged should use it carefully.

### Simple Trouble Check

Trouble	Check the Following Items
No display on screen	<ol style="list-style-type: none"> <li>1. Check whether the plug and the outlet of the power are well done.</li> <li>2. Check whether fuse is in order.</li> <li>3. Check whether the indicator of the regulated power supply is on.</li> </ol>
No output but display on screen	<ol style="list-style-type: none"> <li>1. Check whether the electrodes are well connected with leads.</li> <li>2. Check whether the gauze over the end of electrodes is well soaked in water.</li> <li>3. Trouble inside the apparatus.</li> <li>4. Check whether plug electrode's mains are in socket I or II accordingly.</li> </ol>
No output now and then during treatment	<ol style="list-style-type: none"> <li>1. Check whether electrode's leads are broken or in poor connection.</li> <li>2. Trouble inside the apparatus.</li> </ol>

### Accessories Attached

Name of Accessories	Quantity
Pillar Electrode	1 pair
Thick and Round Electrode	1 pair
Middle Round Electrode	1 pair
Diagnosis Disease Electrode	1pair
The Special Regulated Power Supply For Medical Instrument	1 unit
User's manual	1 piece
Guide For Treatment	1 piece



**Electrical Diagram**