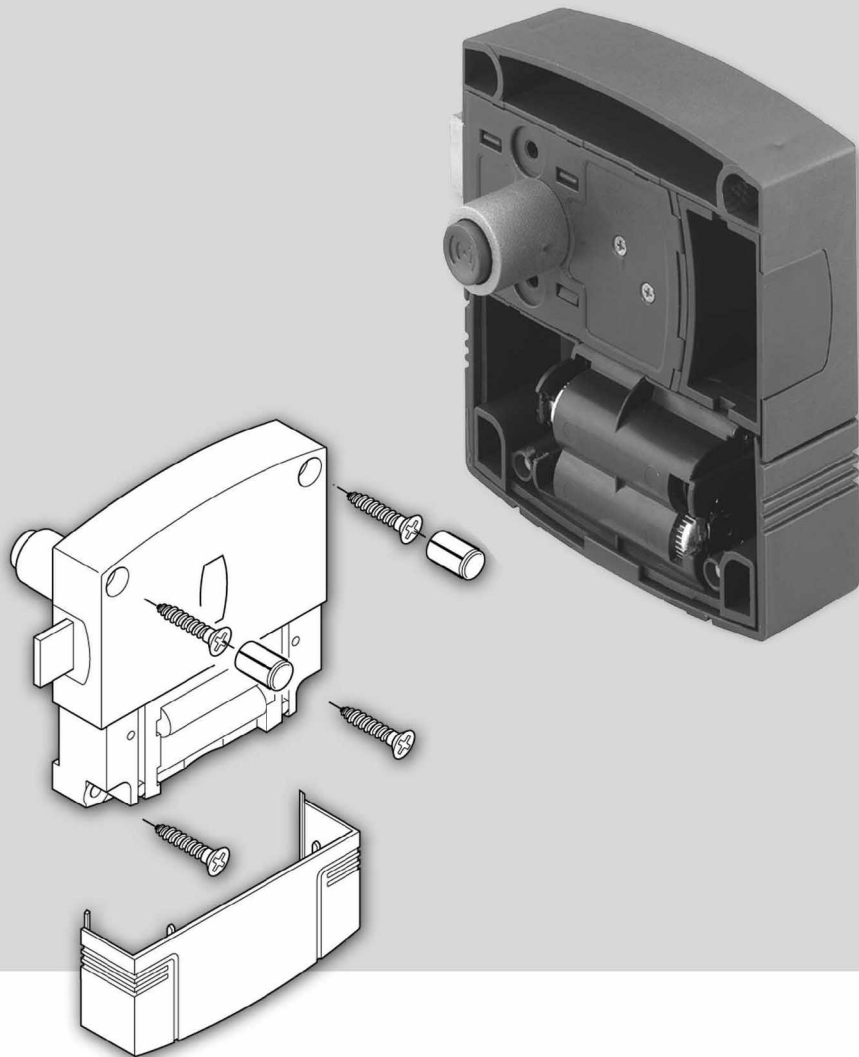


Montageanleitung  
Mounting instructions  
Instructions de montage  
Istruzioni di montaggio  
Instrucciones de instalación

  
HÄFELE



LockerLock Schließgehäuse  
LockerLock lock case  
Boîtier de fermeture LockerLock  
Scatola di chiusura LockerLock  
Caja de cierre LockerLock



**Caution!**

⇒ It is necessary to read the section "Commissioning" in this manual before the actual commissioning (assigning of keys) takes place.

---

**Areas of application**

The LockerLock furniture lock is used for all common cabinet types (e.g. wardrobes, hall cupboards, and lockers).

LockerLock is mounted at the inside of the door panel.

An electronic circuit controlling the locking mechanism is built into the LockerLock casing. The locking mechanism is battery-powered, it is operated by the electronic keys.

In order to lock and unlock the door, the LockerLock push-button at the front side of the door panel must be pushed with an authorised electronic key.

**Technical Information**

Within the Basic Solution, LockerLock is delivered in Stand Alone mode. In this mode, locking authorisations can be assigned to up to 30 electronic keys with a special programming key stick directly at the LockerLock. The locking authorisations are also withdrawn from authorised electronic keys with a deletion key stick directly at the LockerLock.

Furthermore, by means of the info terminal the Wellness function can be added to the LockerLock via a configuration transponder.

Please contact your Dialock dealer if you want to employ another mode of operation.

**Components necessary for commissioning**

- LockerLock
- Programming key stick and deletion key stick
- Electronic key
- 4 batteries AA 1.5 Volts type E91

### **Standards and regulations**

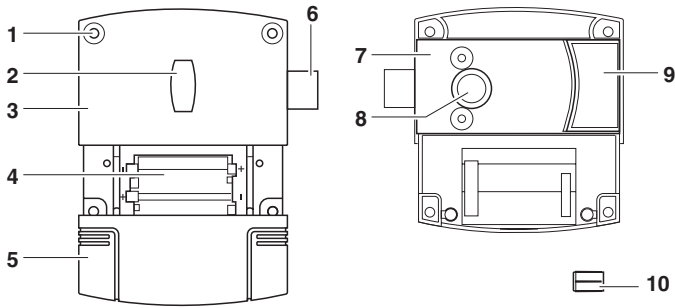
LockerLock complies with the following standard/regulation on which the test/approval were based.

- EN 300 330/May 1999 (frequency spectrum)

### **Specifications**

Temperature range	0–70 °C
Storing temperature	–20 ... +85 °C
Relative humidity (non-condensing)	10–90 %
Safety class	IP 44

**Supplied with**

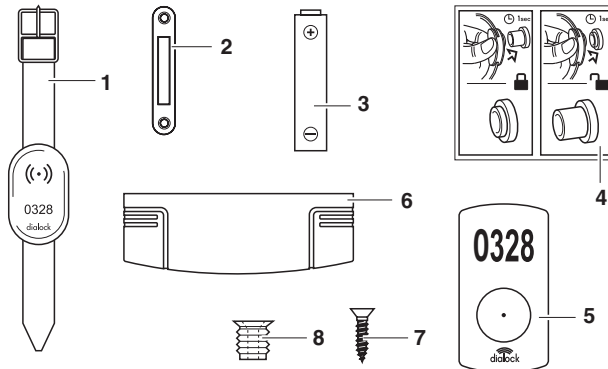


***LockerLock casing (1 piece):***

- 1 *Fixing holes*
  - 2 *Window with LED and IR display*
  - 3 *LockerLock casing*
  - 4 *Battery hold*
  - 5 *Battery hold cover*
  - 6 *Locking latch*
  - 7 *Lock casing*
  - 8 *Push-button*
  - 9 *Latch assembly*
- Accessories***
- 10 *Cover plugs (2 pieces)*

LockerLock can be used with doors hinged on the right or left side.  
LockerLock is delivered for doors hinged on the right side.

**Accessories, not included in standard set:**



- 1 *Electronic key*
  - 2 *Striking plate*
  - 3 *Batteries (4, recommended: AA 1.5 Volts type E91)*
  - 4 *Operating instructions (1 piece)*
  - 5 *Number plate, with number or blank (1 piece)*
  - 6 *Maintenance tool for LockerLock*
- Mounting material**
- 7 *Screws (4 pieces, according to mounting type)*
  - 8 *Screw-in/glue-in sleeves (4 pieces)*

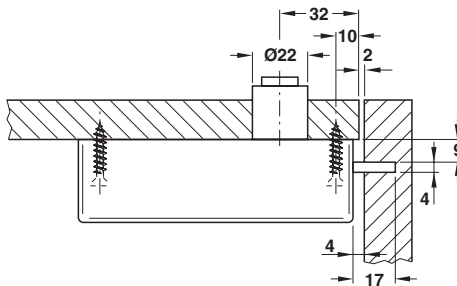
The article numbers can be found in the Technical Information Dialock.

## Installation

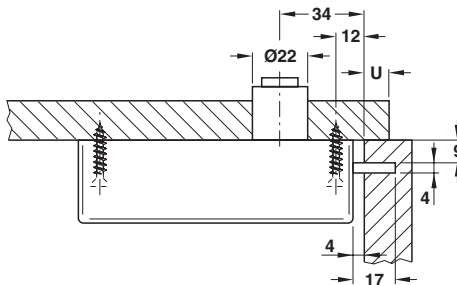
Preconditions:

- Panel thickness 13–19 mm
- Recommended door width:
  - Standard value for inset doors: min. 305 mm
  - Standard value for overlay doors: min. 140 mm
- Mounted striking plate or striking angle
- Distance between push-button centre and door panel edge:
  - for inset doors: 32 mm
  - for overlay doors: 34 + U mm (U: projection of door)

We generally recommend a trial installation before series manufacturing in order to check the dimensions.

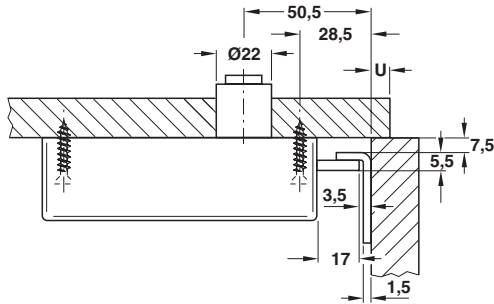


*Horizontal projection with inset door panel*



*Horizontal projection with overlay door panel*

*U Projection of door*



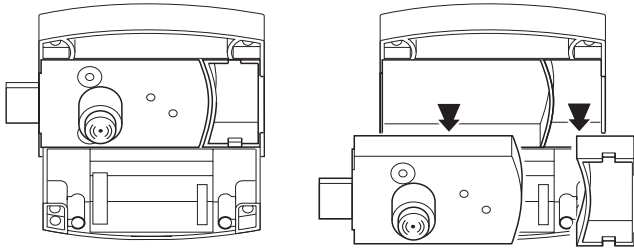
*Horizontal projection with overlay door panel with striking angle*

Required tools and mounting material:

- Drilling template/gluing aid
- Drill
- Screwdriver
- Ruler
- Awl
- For mounting on wooden and HPL (High Pressure Laminate) door panels:
  - 4 wood screws ABC Spax 5 x 25 mm
  - Wood drill D = 22 mm
  - Drill for wood screws ABC Spax 5 x 25 mm
- For mounting on heavy-duty wooden and HPL (High Pressure Laminate) door panels, or doors which are frequently used:
  - 4 countersunk screws M5 x 25 mm
  - 4 screw-in sleeves or glue-in sleeves M5
  - Wood drill D = 22 mm
  - Wood drill D = 8 mm or D = 10 mm, according to sleeves used
- For mounting on steel door panels:
  - 4 countersunk screws M5 x 25 mm
  - Steel drill D = 22 mm

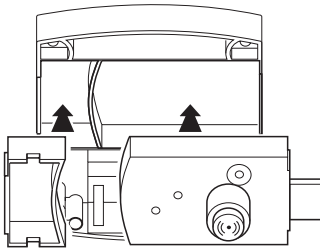
### Customising LockerLock for doors hinged on left side

LockerLock is delivered for doors hinged on the right side. For door panels which are hinged on the left side, the arrangement of lock casing and latch assembly must be customised.



#### *Removing lock casing and latch assembly*

1. Remove the latch assembly from the LockerLock casing.
2. Remove the lock casing from the LockerLock casing.



#### *Mounting lock casing and latch assembly for door panel hinged on left side*

3. Turn the lock casing and mount it into the LockerLock casing. The locking latch points the other way.
4. Mount the latch assembly on the other side of the LockerLock casing.



### Mounting LockerLock

Three steps are required to mount LockerLock:

- Drilling a hole for the push-button into the door panel
- Drilling holes for the screws into the door panel
- Fixing LockerLock to the door panel

Mounting on wooden and HPL (High Pressure Laminate) doors is described below.

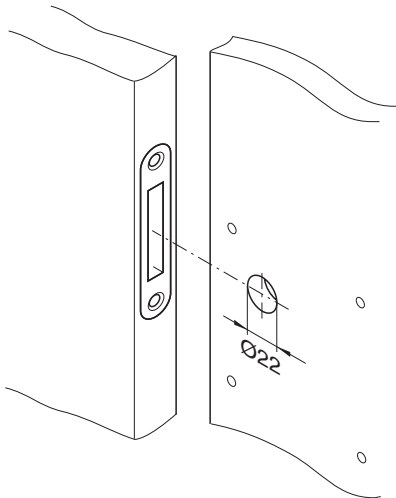
The drawings refer to doors hinged on the right side.



**Condensation water precipitating on cold components can damage the door locking system.**

⇒ Make sure all components have ambient temperature.

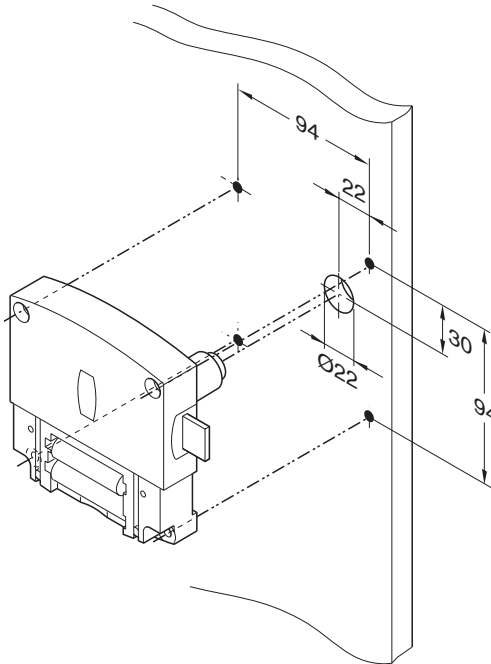
### Drilling a hole for the push-button into the door panel



1. Mark the centre point of the push-button hole on the door panel.  
(Drilling templates are provided with this manual.)
2. Make sure the centre points of the striking plate and the push-button hole are at the same height of the door panel.

3. Consider the distance of the push-button hole to the door panel edge according to the door panel type (inset or overlay).
4. Drill a hole for the push-button into the door panel with  $D = 22$  mm, using an appropriate drill bit.

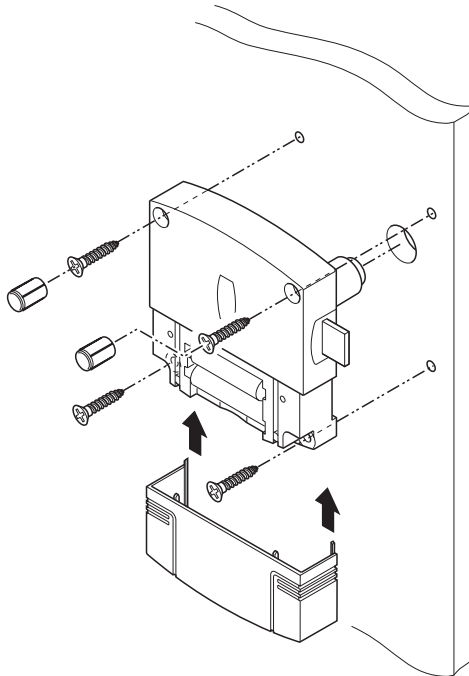
### Drilling holes for the screws into the door panel



1. Mark to size 4 points for the screw holes on the door panel. (Drilling templates are provided with this manual.)
2. Remove the cover of the battery hold with the maintenance tool.
3. Hold LockerLock to the inside of the door panel in such a way that the push-button projects through the respective hole. Check that the points for the screw holes on the door panel correspond to the fixing holes in LockerLock.

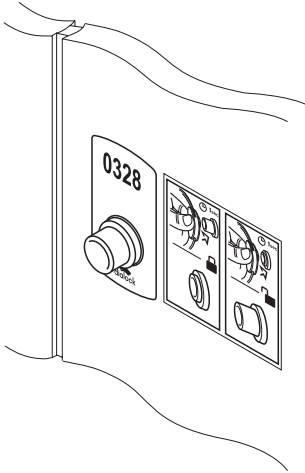
4. Remove LockerLock from the door panel.
5. Drill holes for 4 screws into the door panel, using an appropriate drill bit. If you use sleeves, consider the respective diameter when drilling holes.

### Fixing LockerLock to the door panel



1. Hold LockerLock to the inside of the door panel in such a way that the push-button projects through the respective hole.
2. Tighten the screws in the door panel with the screwdriver through the fixing holes.
3. Push cover plugs into the fixing holes in order to hide the screws.

4. Insert 4 batteries (AA 1.5 Volts type E91 recommended) into the battery hold. Make sure the polarity is correct!
5. Push the cover onto the battery hold.



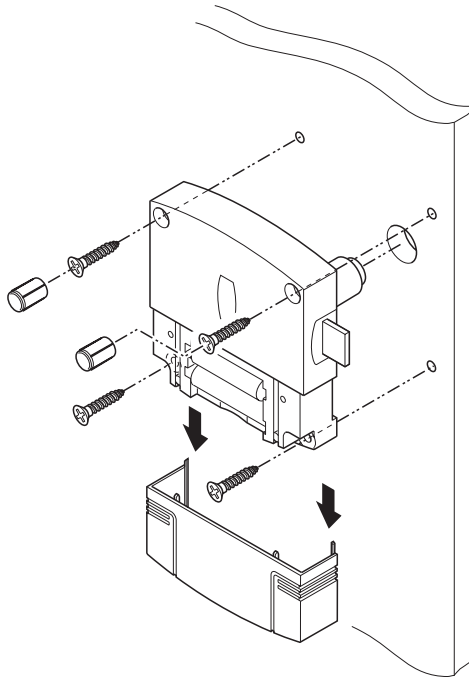
6. Stick the number plate - with number or blank - and the instructions for use onto the outside of the door panel, parallel to the door edge, as shown. (Gluing aids are provided with this manual.) Make sure the surface of the door panel is dry, clean, and non-greasy.

## Demontage

Required tools:

- Cordless screwdriver
- Drill D = 3 mm
- Wood screws ABC Spax 5 x 25 mm
- Screwdriver

### Dismounting LockerLock from the door panel



1. Remove the cover of the battery hold with the maintenance tool.
2. Drill a hole into the cover plugs with the cordless screwdriver and drill bit.
3. Remove the screws from the door panel with the screw driver through the fixing holes.  
The cover plugs are removed with the screws.
4. Remove LockerLock from the door panel.

## Setting into Operation

### **Assigning programming and deletion key sticks (Stand Alone)**

Within the Basic Solution (set choice of lockers), the programming and deletion key sticks must be assigned at the open door during commissioning.

The Wellness function (free choice of lockers) must be added with the configuration transponder before programming and deletion key sticks are assigned.



### **Prevent misuse of electronic keys by unauthorised persons.**

⇒ Store the programming and deletion key sticks in a safe place since they can be used for assigning locking authorisations to electronic keys.

- 
1. Have the green programming key stick and red deletion key stick ready.
  2. Press the push-button and keep it pressed.  
The green LED in the window of the LockerLock casing flashes for several seconds.  
LockerLock is switched on.
  3. Keep the push-button pressed. When the green LED flashes, present the green programming key stick to the push-button.  
The LED lights up green without flashing.
  4. Remove the green programming key stick, keep the push-button pressed.  
The red LED flashes to confirm the successful "learning".

5. Keep the push-button pressed. When the red LED flashes, present the red deletion key stick to the push-button.  
The green LED lights up as confirmation.
6. Remove the red deletion key stick. Release the push-button.  
LockerLock switches off automatically.

If an error occurred during the assigning process:

⇒ Switch on LockerLock again.

⇒ Assign the programming and deletion key sticks again.

If the error occurs again:

⇒ Contact your Dialock dealer.

## Brief User Manual

### **Assigning locking authorisations via programming key stick (set choice of lockers)**

1. Press the push-button and keep it pressed.  
The red LED lights up.  
LockerLock is switched on.
2. Keep the push-button pressed. Present the green programming key stick to the push-button.  
The green LED flashes.
3. When the green LED flashes (approx. 5 seconds), release the push-button and present to the push-button the electronic key to be learnt.  
The red LED flashes shortly to confirm the successful "learning".  
The green LED remains illuminated without flashing.  
The locking authorisation has been assigned to the electronic key to be learnt.
4. Remove the learnt electronic key.  
The green LED flashes, LockerLock switches off automatically after approx. 5 seconds.  
  
If the red LED lights up, the procedure has not been successful:  
⇒ Repeat assigning the locking authorisation.
5. When the green LED flashes, present the next electronic key to be learnt to the push-button within 5 seconds (repeat steps 3 and 4).
6. After all electronic keys have been learnt successfully: Wait until LockerLock switches off automatically.  
All locking authorisations have been assigned.



**Withdrawing locking authorisations from single electronic key with deletion key stick (set choice of lockers)**

1. Press the push-button and keep it pressed.  
The red LED lights up.  
LockerLock is switched on.
2. Keep the push-button pressed. Present the red deletion key stick to the push-button.  
The red LED flashes.
3. Release the push-button and present the electronic key to be deleted to the push-button.  
The red LED switches off.  
The locking authorisations have been deleted from the presented electronic key.

**Withdrawing locking authorisations from all electronic keys (set choice of lockers)**

If an electronic key is lost and therefore shall not be authorised any longer, all electronic keys must be deleted at the LockerLock. After this, locking authorisations must be assigned to all authorised electronic keys again.

1. Press the push-button and keep it pressed.  
The red LED lights up.  
LockerLock is switched on.
2. Keep the push-button pressed. Present the red deletion key stick to the push-button.  
The red LED flashes.
3. Release the push-button and present the green programming key stick to the push-button.  
The green and red LED light up shortly after each other.  
The locking authorisations have been deleted from all electronic keys.
4. Individually assign locking authorisations to those electronic keys again which are to keep authorisations.

**Operation with wellness function**

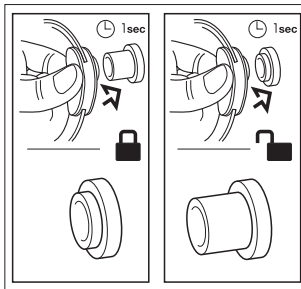
- ⇒ Before LockerLock with wellness function can be operated, carry out one locking procedure with an authorized personnel key.

**Locking the door**

1. Close the door.
2. Press the LockerLock push-button with an authorised electronic key to the stop and keep it pressed for approx. 1 second. Remove the electronic key.  
The push-button remains pushed in.  
The locking latch is extended, the door is locked.

**Unlocking the door**

- ⇒ Press the push-button with an authorised electronic key to the stop and keep it pressed for approx. 1 second. Remove the electronic key.  
The push-button projects.  
The locking latch is pulled in, you can open the door.



*LockerLock operating instructions*

### Changing batteries

If the batteries are low, the red and green LED flash alternately after the LockerLock is switched on.

The door cannot be locked any more with LockerLock if the batteries are empty.

Trouble-free operation of the LockerLock can only be ensured if low batteries are changed immediately.

We recommend to change the batteries after 2 years of use in order to avoid possible damage through leaking batteries.

Recommendation: Energizer alkaline-manganese batteries

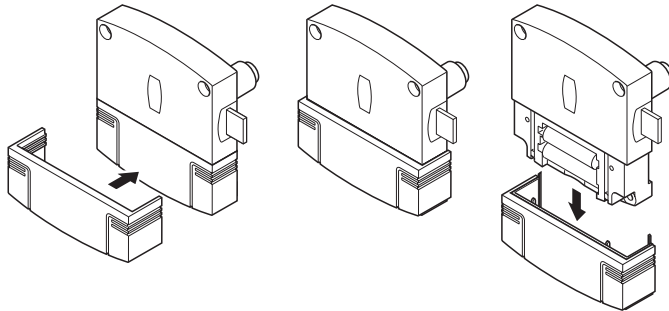


### Do not dispose of batteries through normal domestic waste!

⇒ Batteries should be disposed of in an environmentally-friendly way, e.g. at municipal collection points.

---

### Changing batteries



1. Place the maintenance tool on the cover of the battery hold.
2. Press the maintenance tool, push it up slightly; then, together with the battery hold cover, pull it down and away.

3. Remove the empty batteries from the battery hold.
4. Insert new batteries into the battery hold. Make sure the polarity is correct!
5. Remove the battery hold cover from the maintenance tool and push it onto the battery hold from below.  
The battery hold is closed.

After the batteries have been changed, LockerLock is ready for use again.