



## ARTEFFECTS®

- FloorScore™ certified.
- Fresh, earth-based colors and tinted neutrals provide an array of patterning options.
- Visual portrays the textural dimension and softness of carpet with maintenance benefits of vinyl.
- The nondirectional pattern design conveys a seamless, sheet-like appearance with the easy installation and replacement advantages of tile.

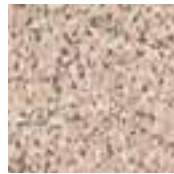
57203 pastel beige, 57206 fresco red, 57210 umber green



**57215**  
zinc white



**57200**  
parchment beige



**57204**  
pissarro cream



**57202**  
canvas beige



**57203**  
pastel beige



**57205**  
silver sable



**57211**  
mezzo green



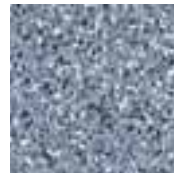
**57216**  
intaglio gray



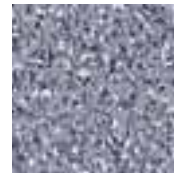
**57201**  
silverpoint



**57206**  
fresco red



**57208**  
saxon blue



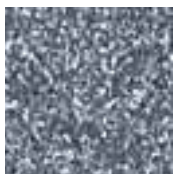
**57218**  
violet glaze



**57210**  
umber green



**57217**  
antique papyrus



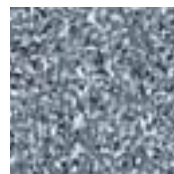
**57214**  
paris blue



**57213**  
charcoal stick



**57207**  
roman red



**57209**  
water garden  
blue

# Premium Composition Tile

## ARTEFFECTS®

### Specification Data

#### Material

A composition of polyvinyl chloride resin, plasticizers, stabilizers, fillers and pigments.

#### Construction and Colors

Color and pattern detail are dispersed uniformly throughout the thickness of the material. Color pigments are insoluble in water and resistant to cleaning agents and light.

#### Size

12 in. x 12 in. (305 mm x 305 mm) tile

#### Gauge (nominal thickness)

1/8" (3.2 mm)

#### Limitations

These products should **not** be used in the following areas:

- Hospital operating rooms.
- Heavy industrial and exterior areas.
- Commercial kitchens and commercial food processing areas.
- Where pointed spikes such as golf or track shoes will be used.
- Where the floor will be subjected to unusually concentrated static or dynamic loads.

**NOTE:** Concentrated static and dynamic loads such as hospital beds, roll-out bleachers, portable x-ray machines, etc., may visibly damage resilient as well as other types of floor coverings. **For questions regarding product suitability and detailed instructions for floor preparation and installation in these applications, please contact Armstrong.**

#### Suitable for Application Over

- Concrete, terrazzo, and other dry, structurally sound monolithic subfloors, which are suspended, on grade or below grade.
- Suspended wood subfloor construction with approved wood underlayments, and a minimum of 18 in. (45.7 cm) well-ventilated air space below.
- Most metal floors and most existing single-layer resilient floors on approved underlayments.
- Radiant-heated subfloors with a maximum surface temperature of 85° F (29° C).

#### Unsuitable for Application Over

- Subfloors where excessive moisture or alkali is present.
- Sleeper-constructed wood subfloors, on grade or below grade.
- Lightweight aggregate concrete subfloors having a density of less than 90 lbs. per cu. ft. (1441 kg/m<sup>3</sup>) or cellular concrete having a plastic (wet) density less than 100 lbs. per cu. ft. (1602 kg/m<sup>3</sup>) [94 lbs. per cu. ft. (1506 kg/m<sup>3</sup>) dry weight], or concrete having a compressive strength of less than 3500 psi (24 MPa). Concrete slabs with heavy static and/or dynamic loads should have higher design strengths and densities calculated to accommodate such loads.

**Concrete curing agents, sealers, hardeners, or parting agents should be removed.**

### TECHNICAL DATA

#### Shipping Weight

63 lbs./carton (29 kg)

#### Packaging

Tiles per carton – 45, 45 sq. ft.

#### Gloss (typical value)

60 degrees specular: 20 - 40

#### Reference Specifications

ASTM F 1066, Class 3 – surface pattern

#### Static Load Limit

ASTM F 970  
125 lbs./sq. in. (8.8 kg/cm<sup>2</sup>)

**NOTE:** Floors should be protected from sharp-point loads and heavy static loads. High-heeled traffic [1000 psi (70.3 kg/cm<sup>2</sup>) or more] may visibly damage wood, resilient and other floor coverings.

#### Comparative Subjective Property Ratings

Durability – Good  
Maintainability – Good  
Resilience – Good  
Subjective ratings (excellent, very good, good, fair) are in relation to other Armstrong commercial resilient floors. Ratings are not directly related to any one test. They are broadly based on tests and experience of Armstrong Research and Development under varying conditions and circumstances. These ratings should not be used for comparison to ratings used by other manufacturers to rank their own products.

#### Fire Test Data

ASTM E 648 Flooring Radiant Panel Critical Radiant Flux – 0.45 watts/cm<sup>2</sup> or more – Class I  
ASTM E 662 Smoke Chamber Specific Optical Smoke Density – 450 or less  
Numerical flammability ratings alone may not define the performance of the product under actual fire conditions. These ratings are provided only for use in the selection of products to meet the specified limits.

### INSTALLATION

#### Job Conditions

Subfloors/underlayments shall be dry, clean, and smooth. They shall be free from paint, varnish, solvents, wax, oil, existing adhesive residue, or other foreign matter.

For more detailed requirements of concrete, wood and metal subfloors, as well as wood and trowelable underlayments, refer to Armstrong Guaranteed Installation Systems manual, F-5061. Calcium Chloride Tests for moisture must be conducted. Armstrong offers a guideline of a maximum acceptable moisture emission level of 5.0 lbs. per 1000 sq. ft. per 24 hours. Bond Tests should also be conducted for compatibility with the substrate. When testing for alkalinity, the allowable readings for the installation of Armstrong flooring are 5 to 9 on the pH scale.

Temperature shall be maintained at a minimum of 65° F (18° C) and a maximum of 100° F (38° C) for 48 hours prior to installation, during installation and 48 hours after completion. A minimum temperature of 55° F (13° C) shall be maintained thereafter. Condition all flooring materials and adhesives to room temperature at least 48 hours prior to starting installation. Protect all materials from the direct flow of heat from hot-air registers, radiators, or other heating fixtures and appliances.

#### Procedure

These products should be installed with the following adhesives:

Subfloor	Wood Underlayment	Concrete	Ceramic, Marble, Terrazzo	Metal	Existing Resilient Floor
Adhesive	S-515 S-700 S-750	S-89 S-515 S-700 S-750	S-89 S-515 S-700 S-750	S-89*	S-515 S-750 Tile-On™

\*S-89 may only be used over steel, stainless steel, aluminum and lead.

**NOTE:** Install each ARTEFFECTS tile with the arrows pointing in the same direction for a nondirectional look. Detailed instructions may be found in the Armstrong Guaranteed Installation Systems manual, F-5061.

### MAINTENANCE

These products are designed to be maintained by traditional resilient flooring maintenance methods, which include the use of polishes, spray-buffing techniques and appropriate high-speed maintenance systems.

#### Initial Maintenance Immediately After Installation

- Sweep or vacuum thoroughly.
- Damp mop with a dilute neutral detergent solution such as Armstrong S-485 Floor Cleaner – carefully wiping up black marks and excessive soil.
- Apply two coats of high quality commercial floor polish such as Armstrong S-480.
- Do not wash, scrub or strip the floor for at least four to five days after installation.

#### Preparation for Commercial Use

For specific, ongoing maintenance procedures see Armstrong Maintenance Recommendations & Procedures for Commercial Resilient Flooring booklet, F-8663.

### WARRANTIES

Armstrong warrants its regular (first quality) commercial floors and wall base to be free from manufacturing defects and warrants the installation integrity for five years from the date of purchase, if installed according to the Armstrong Guaranteed Installation Systems manual, F-5061. This warranty extends only to the original end-user. See Armstrong Commercial Floor Warranty, F-3349 or visit [armstrong.com](http://armstrong.com) for warranty details, limitations and exclusions.

**WARNING: EXISTING IN-PLACE RESILIENT FLOOR COVERING AND ASPHALTIC ADHESIVES. DO NOT SAND, DRY SWEEP, DRY SCRAPE, DRILL, SAW, BEADBLAST, OR MECHANICALLY CHIP OR PULVERIZE EXISTING RESILIENT FLOORING, BACKING, LINING FELT, ASPHALTIC "CUTBACK" ADHESIVE, OR OTHER ADHESIVE.**

These existing in-place products may contain asbestos fibers and/or crystalline silica.

Avoid creating dust. Inhalation of such dust is a cancer and respiratory tract hazard.

Smoking by individuals exposed to asbestos fibers greatly increases the risk of serious bodily harm.

Unless positively certain that the existing in-place product is a non-asbestos-containing material, you must presume it contains asbestos. Regulations may require that the material be tested to determine asbestos content and may govern removal and disposal of material.

See current edition of the Resilient Floor Covering Institute (RFCI) publication Recommended Work Practices for Removal of Resilient Floor Coverings for instructions on removing all resilient floor covering structures or contact your retailer or Armstrong World Industries, Inc. 1 800 233 3823.

The floor covering or adhesive in this package does NOT contain asbestos.

**NOTE:** Darker-colored patterns may be susceptible to scratch whitening. These colors may require more frequent maintenance if used in field areas: 57207, 57211, 57213.

**The knowledge and technical support you need to bring your vision to life.**

Visit [armstrong.com/flooring](http://armstrong.com/flooring) or  
Call 1 877 ARMSTRONG (276 7876)

Choose option 2 to:  
Talk to a TechLine Flooring Expert  
Contact your Local Armstrong Flooring Representative  
Order Samples and Literature

Printed in United States of America.

© 2009 AWI Licensing Company

FloorScore™ is a trademark of the Resilient Floor Covering Institute. LEED® is a registered trademark of the United States Green Building Council. All other trademarks owned by AWI Licensing Company, LEED® and the Armstrong Logo are registered in the United States and Canada. Armstrong® and ARTEFFECTS® are registered in the United States only.

F-8242-509



LEED eligible under  
Credit EQ4.3 for  
Indoor Air Quality



ISO 9001



Quality  
Management  
Standard