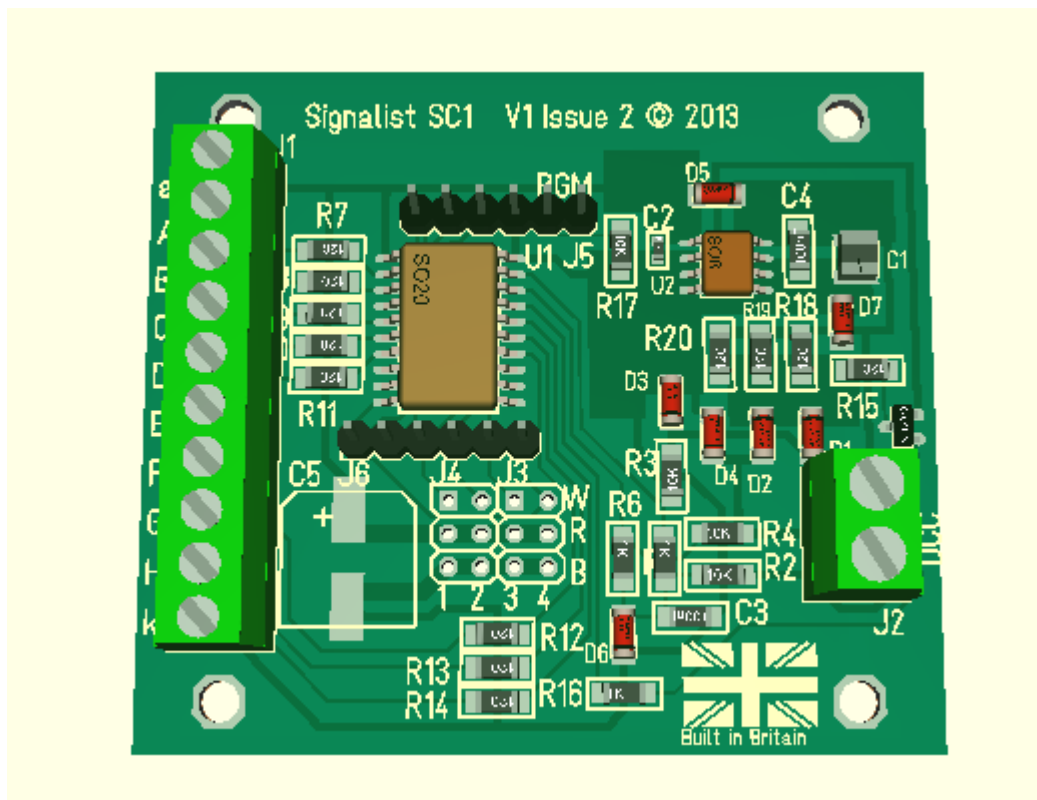


Signalist SC1



DCC signal controller user manual
Covers configuration for UK signals

Contents

Overview	4
Connections	4
DCC track connection	5
2-aspect signal connections	6
2-aspect with feather	7
3-aspect with single feather	8
3-aspect or 4-aspect	9
3-aspect or 4-aspect with feathers	10
2/3-aspect searchlight	11
2/3-aspect searchlight with feather	12
4-aspect searchlight	13
3-aspect searchlight or 4-aspect searchlight with multiple feathers	14
LMS 'Mirfield' and 'New Lines' searchlight signals	15
Position light signal	16
SPAD indicator	17
Level Crossing lights	18
Dapol Semaphore signals	19
Configuration of the SC1	20
DCC decoder address configuration	20
Setting the signal type	22
Setting the signal polarity	23
Setting the default state	23
Setting the brightness of individual LEDs	23
Special effects	23
Operation	25
General	25
2-aspect	25
3 or 4-aspect (except CV38 = 7 and extended accessory protocol)	26
3-aspect or 4-aspect when CV38 = 7 or 11	27
Extended accessory protocol	27
Extended accessory protocol when CV38 = 128 – 134	27
List of CVs	28
Configuration of automation software	30
Railroad & Co	30

JMRI	34
RocRail	39
Specification.....	47
Additional support	48

Signalist SC1 user manual

Overview

The signalist SC1 is a highly versatile DCC accessory decoder optimised for driving LED based signals and will drive any LED based signal that will operate from a 5V supply. The SC1 can typically drive up to eight signal lamps in various configurations allowing the connection of up to four 2-aspect signals, two 3-aspect signals or two 4-aspect signals. The flexible output configuration can drive searchlight and position light signals using multicolour LEDs as well as feathers with a correct common centre lamp. Configuration of signal type and address is by standard programming of configuration variables on the DCC programming track connection from a command station or dedicated DCC programmer such as a Sprog.

Connections

The following section shows how to connect the SC1 to the signals and DCC system. The diagrams all show common cathode wiring but if common anode signals are used the common wire should be connected to terminal 'a' instead of terminal 'k'.

DCC track connection

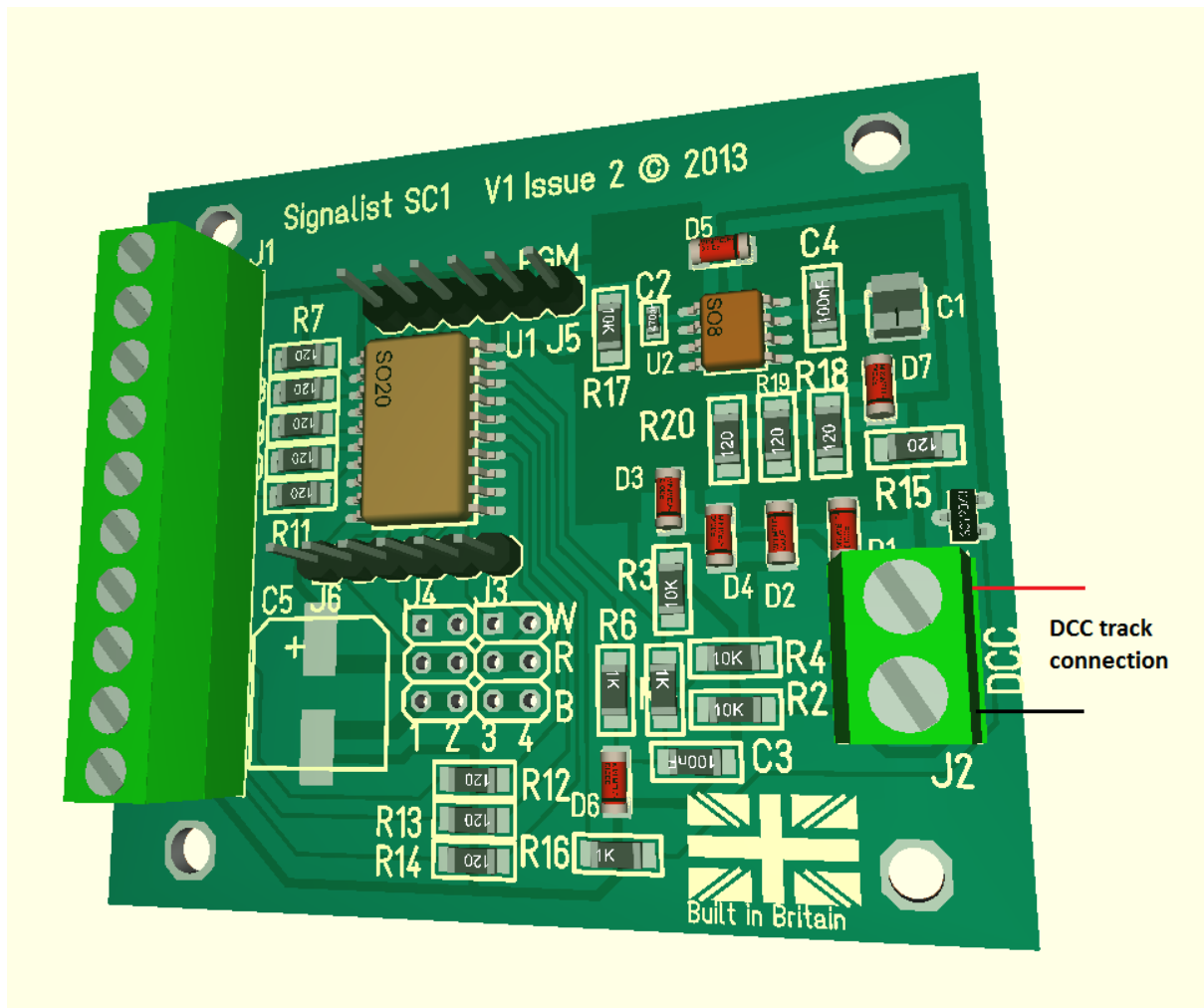


FIGURE 1

Only the DCC signal is required to control and power the SC1 via terminal block J2. Normally this will be connected to the accessory bus, but if you do not have a separate accessory bus it can be connected to the track bus or just to the track adjacent to the signal. When programming the SC1, J2 will need to be connected to the programming track output of the command station instead of to the track output.

2-aspect signal connections

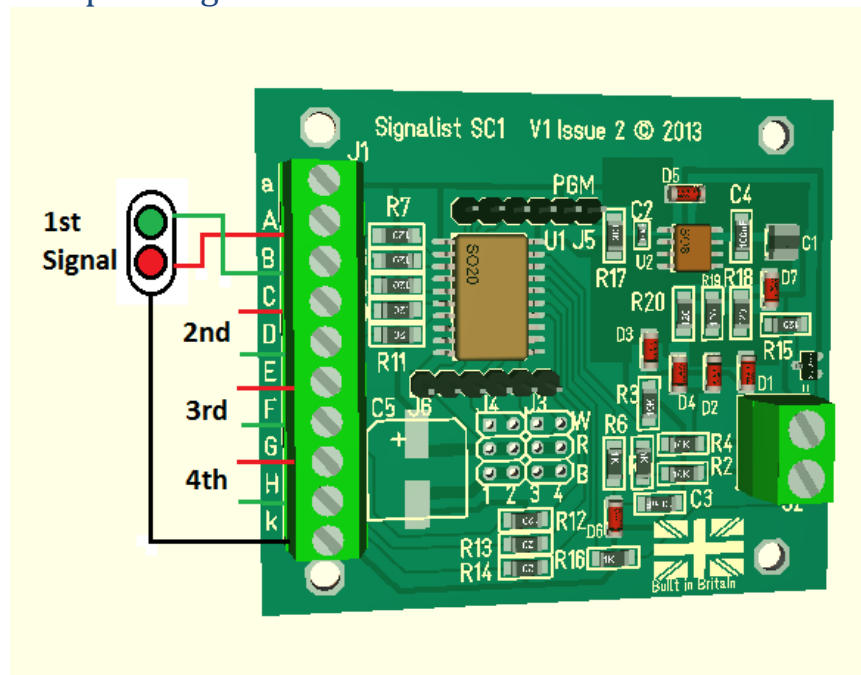


FIGURE 2

Up to four simple 2-aspect signals can be attached to the SC1. The first signal is shown in Figure 2 with the red LED connected to terminal 'A', the green LED connected to terminal 'B', and the common cathode wire connected to terminal 'k'. If a common anode arrangement is used in the signal the common anode connection can be made to the 'a' terminal. If a distant signal is used the yellow LED should be connected in place of the red LED shown in Figure 2.

It is possible to connect the two LEDs in inverse parallel between the A and B terminals if required and not use the common terminal to make the wiring simpler.

This configuration method is compatible with CV38=0 (and CV38=14 E+F and G+H only, CV38=6 G+H only) and CV38=129.

2-aspect with feather

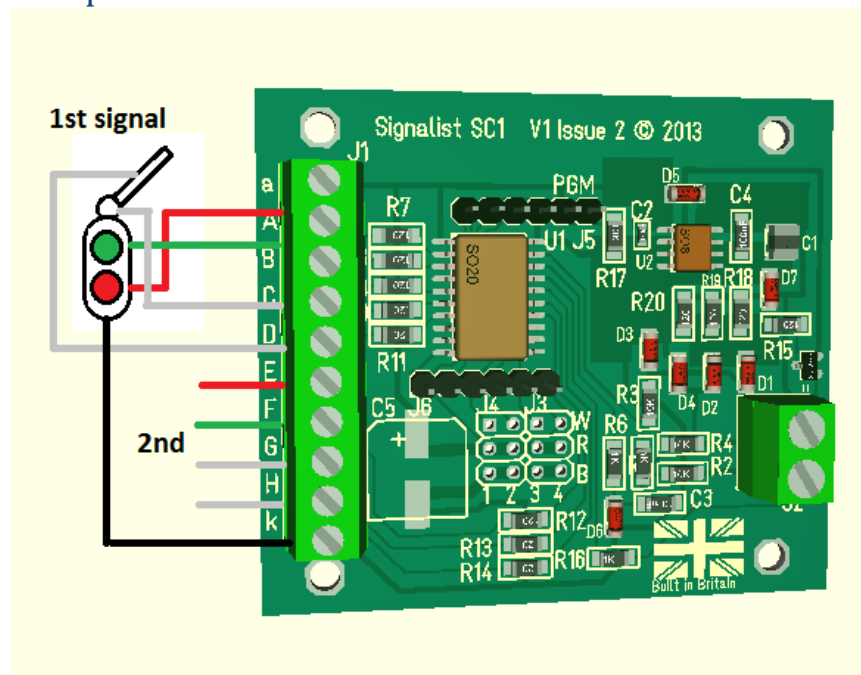


FIGURE 3

Up to two 2-aspect signals fitted with a single feather can be connected to the SC1 as shown in Figure 3. Wiring is essentially the same for the main aspects as for a simple 2-aspect. The feather should be connected to output 'D' for signal 1 and 'H' for signal 2. Some feathers will have a separate common LED and this can be connected to output 'C' for signal 1 and output 'G' for signal 2. If more than one feather is fitted to each head the wiring for a 4-aspect signal with feather will have to be followed instead omitting the wiring for the yellow aspects.

This configuration method is compatible with CV38=2.

3-aspect with single feather

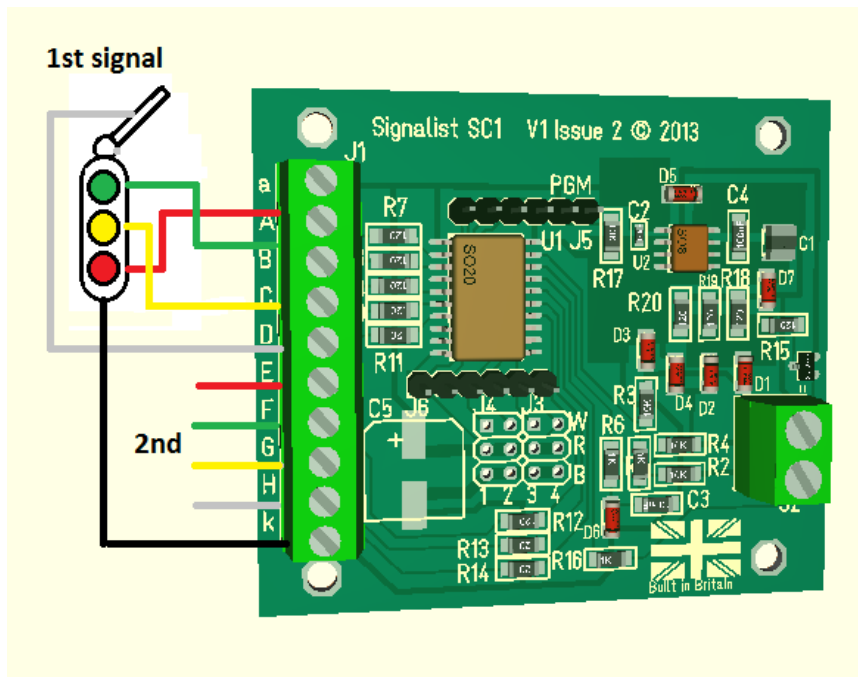


FIGURE 4

Two 3-aspects with single feathers can be connected to the SC1 as shown in Figure 4. If the feathers have a separate common lamp connection it should be connected to terminal D or H as appropriate.

This configuration method is compatible with CV38=9 or CV38=130.

3-aspect or 4-aspect

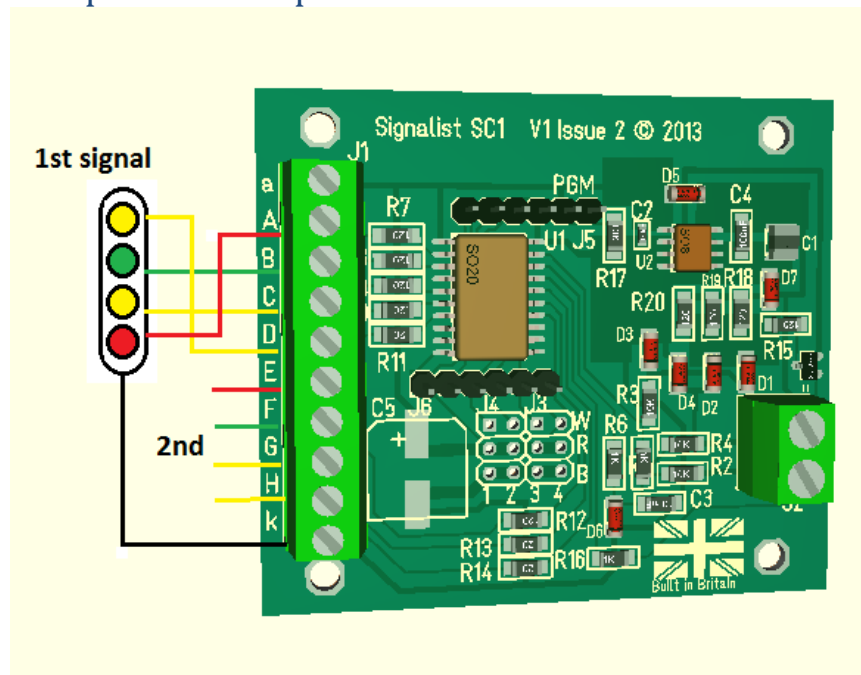


FIGURE 5

Two 4-aspect signals can be connected to the SC1 as shown in Figure 5. If 3-aspect signals are used there will be no connection to outputs 'D' or 'H' and any attempt to display double yellow will result in single yellow being displayed instead.

This configuration method is fully compatible with CV38=1, 7, 11, 14 (A-D only) and 128.

3-aspect or 4-aspect with feathers

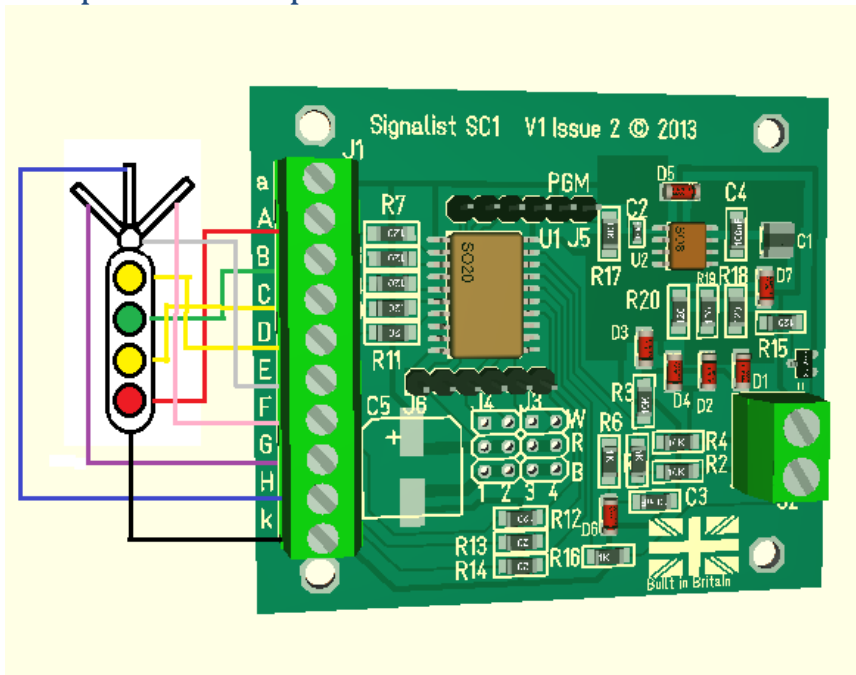


FIGURE 6

A single 4-aspect signal with feathers can be connected, with provision for up to three feathers. If a prototypically correct common centre lamp is used it should be connected to output 'E'.

This configuration method is compatible with CV38=3, CV38=133 (and CV38=6 single feather only).

2/3-aspect searchlight

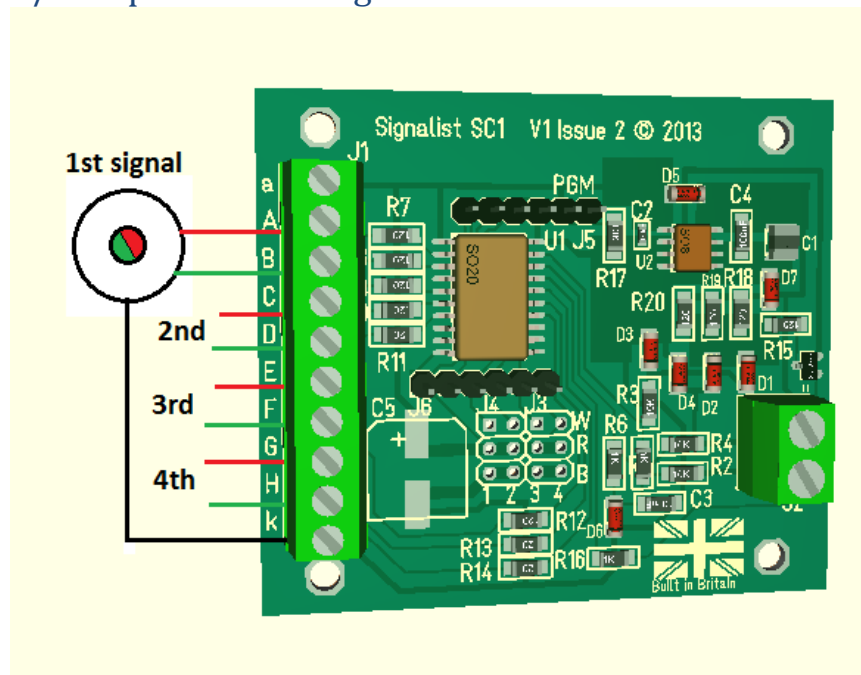


FIGURE 7

Up to four 2-aspect searchlight signals or 3-aspect searchlight signals can be connected to the SC1 as shown in Figure 7. 2-aspect searchlight signals may or may not have a common connection as shown in Figure 8, and if not there is no need to make a common connection. 3-aspect must have common anode or cathode.

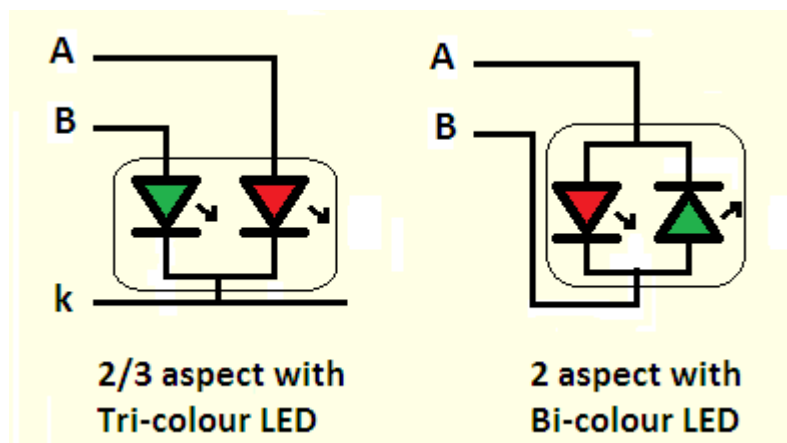


FIGURE 8

The yellow aspect is achieved by turning on both the red and green LEDs at once. Careful adjustment of the brightness CVs will enable the best yellow colour to be displayed.

This configuration method is compatible with CV38=0 (2-aspect only), CV38=8 (3-aspect), CV38=16 (GWR twin head) or CV38=129 (3-aspect extended protocol).

2/3-aspect searchlight with feather

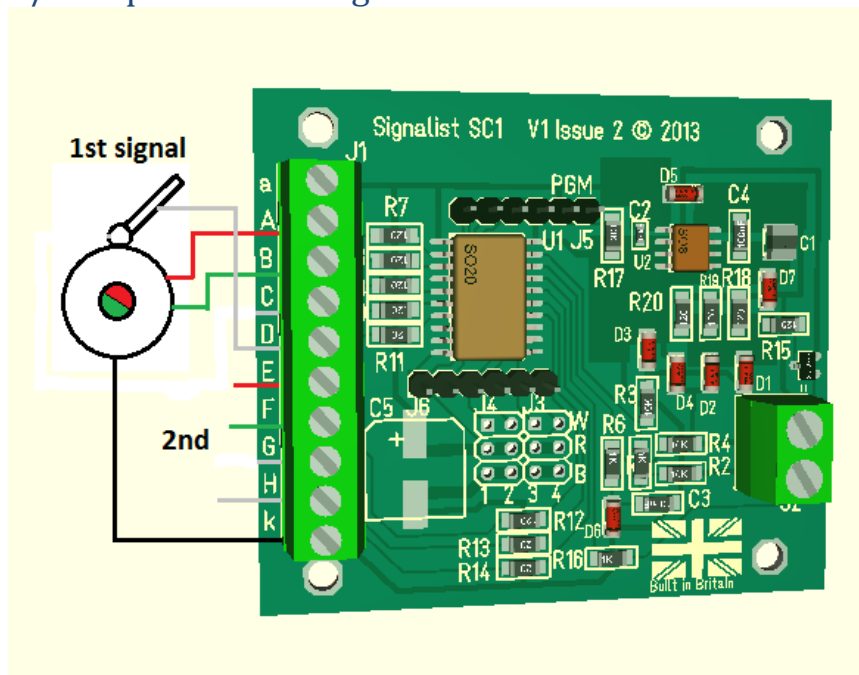


FIGURE 9

Up to two 2-aspect or 3-aspect searchlight signals with a single feather can be connected to the SC1 as shown in Figure 9.

This configuration method is compatible with CV38=2 (2-aspect) and CV38=131 (3-aspect extended protocol).

4-aspect searchlight

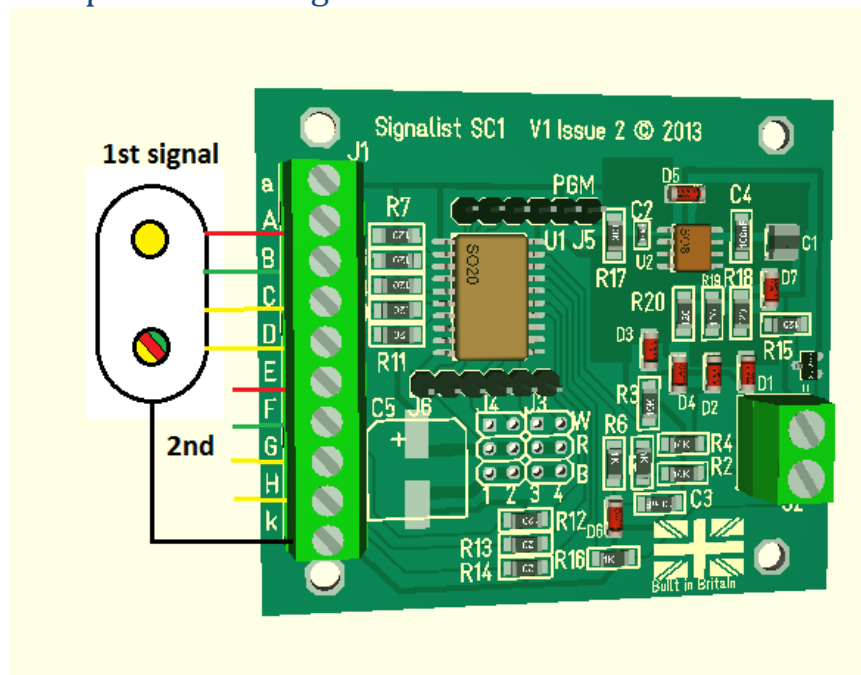


FIGURE 10

Up to two 4-aspect searchlight, or two 3-aspect searchlight signals can be connected to the SC1 as show in Figure 10. There may only be a single connection for the second yellow lamp, but if two are provided and connected to terminals 'C' and 'D' the colour can be adjusted as for the main lamp. 3-aspect searchlight signals will not have a second yellow lamp and therefore no connection to terminals 'C', 'D', 'G' or 'H'

This configuration method is compatible with CV38=4 and CV38=132.

3-aspect searchlight or 4-aspect searchlight with multiple feathers

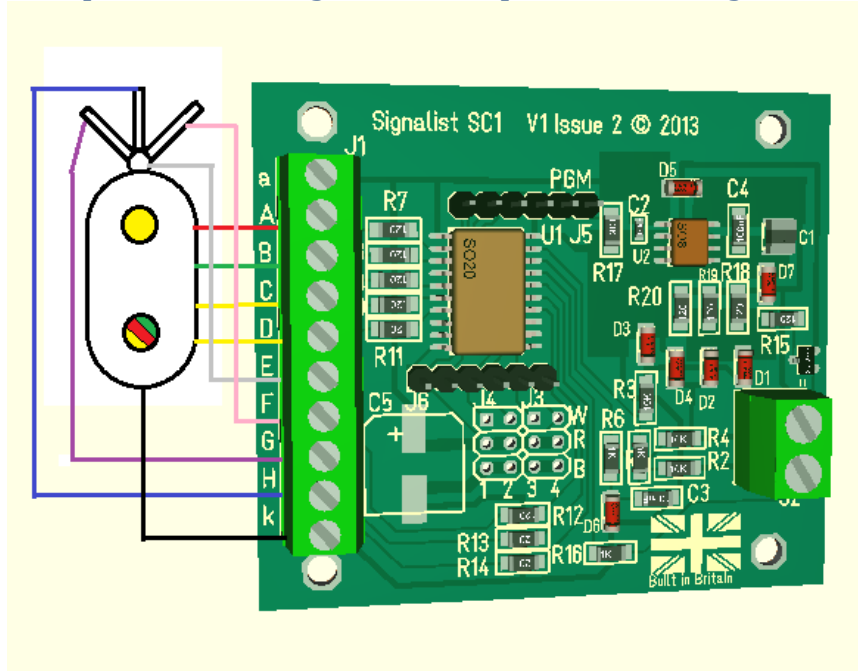


FIGURE 12

A 4-aspect searchlight or 3-aspect searchlight with up to three feathers can be connected to the SC1 as shown in Figure 12. If the feathers have a separate common lamp connection it should be connected to terminal E. 4-aspect searchlight signals may or may not have the second yellow' connection to terminal 'D'. If a 3-aspect searchlight signal is used there will be no second yellow aspect and therefore no connection to terminals 'C' or 'D'.

This configuration method is compatible with CV38=5 and CV38=134.

LMS 'Mirfield' and 'New Lines' searchlight signals

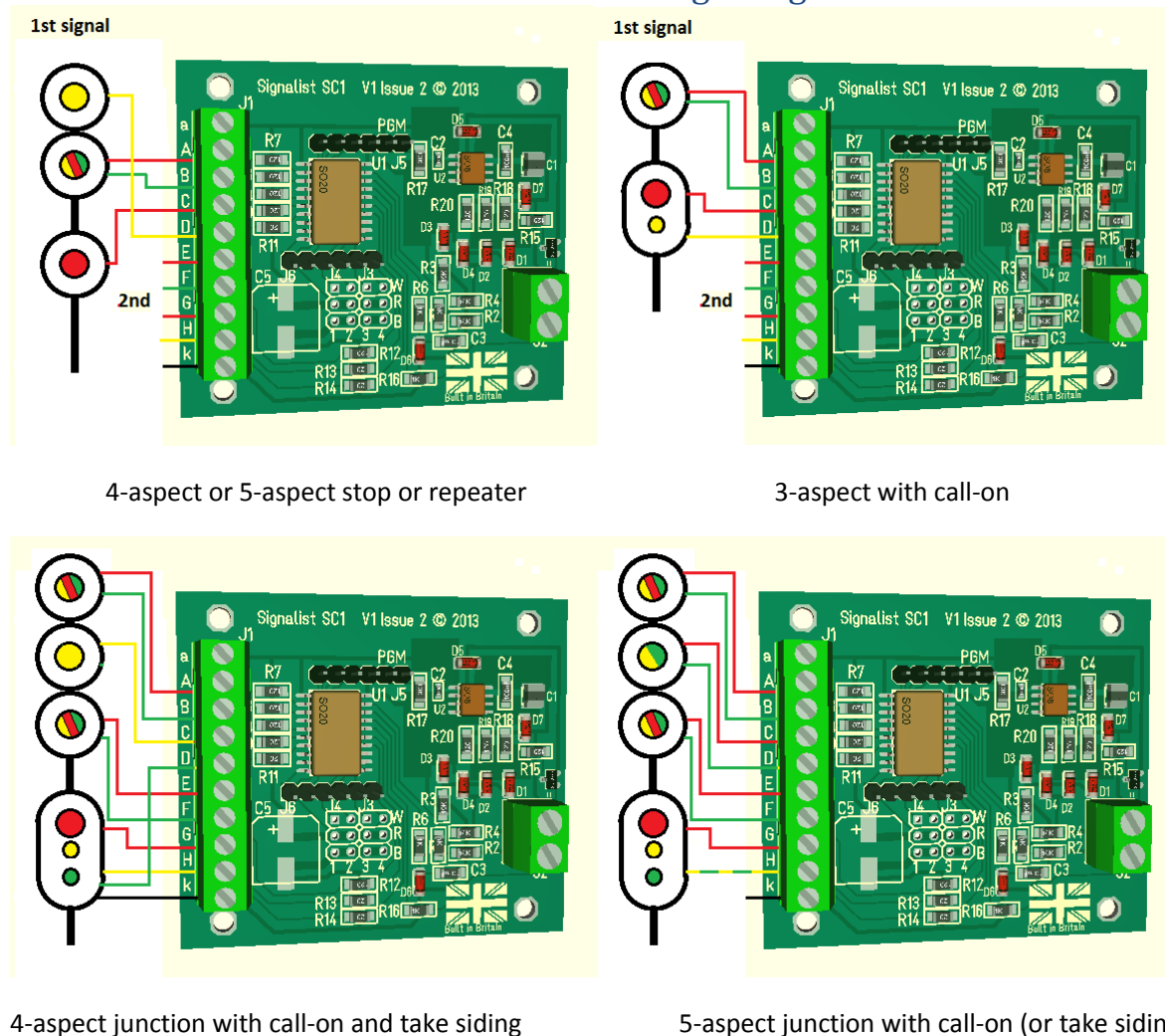


FIGURE 13

LMS 3-aspect, 4-aspect and 5-aspect searchlight signals can be connected to the SC1 as shown in Figure 13. If a 3-aspect searchlight signal is used there will be no second yellow aspect and therefore no connection to terminal 'D' unless a call-on indication is required.

This configuration method is compatible with CV38=8, CV38=136 (home or repeater) and CV38=137 (junction).

Position light signal

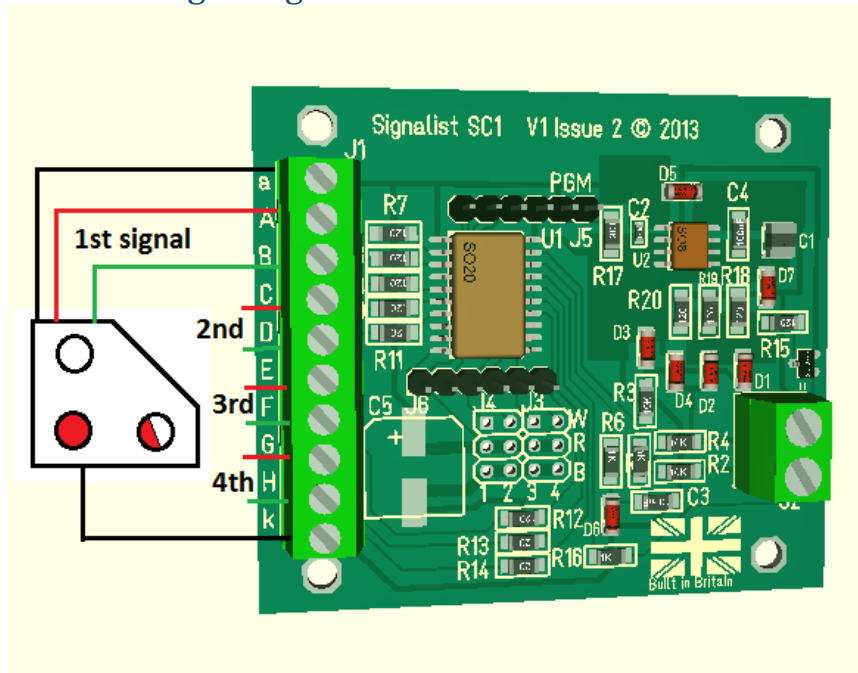


FIGURE 14

Up to four position light signals can be connected to the SC1. Depending on the type position light signals may or may not have any of the common connections; if not just connect to terminals 'A' and 'B' etc.

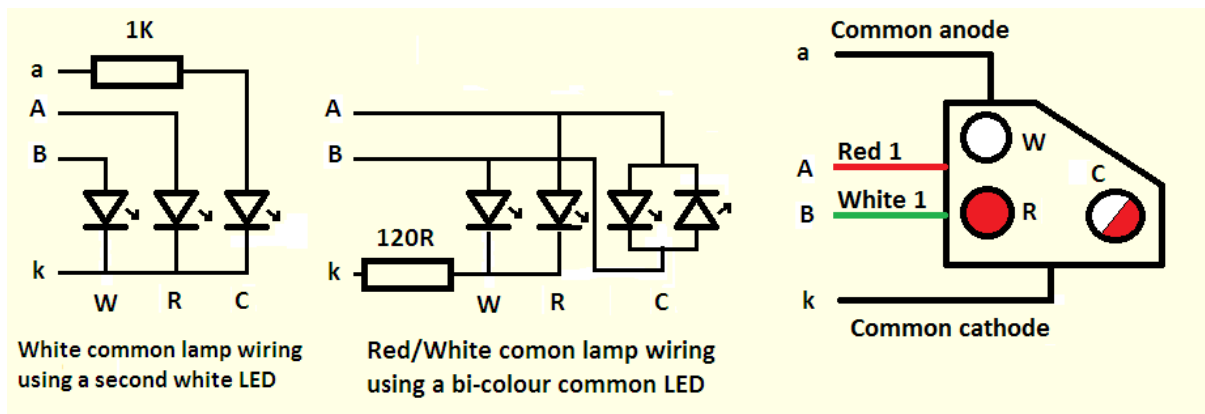


FIGURE 15

With the white common lamp the 1K resistor sets the brightness of the common lamp. It will then be necessary to adjust the brightness CVs for the other lamps to match.

This configuration method is compatible with CV38=0 (and CV38=14 E+F and G+H only, CV38=6 G+H only) and CV38=129.

SPAD indicator

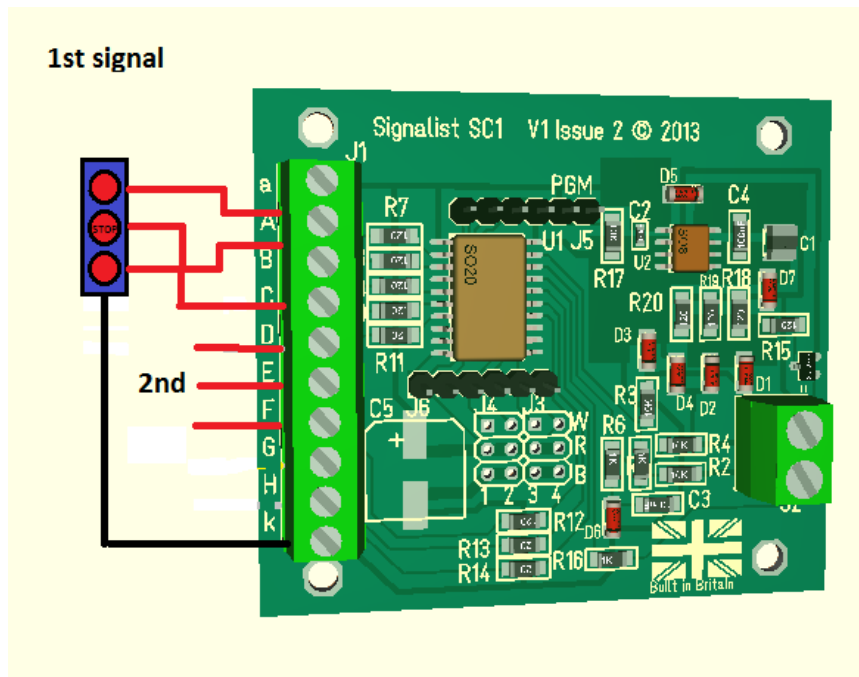


FIGURE 16

Up to two SPAD indicators can be connected to the SC1. This configuration method is compatible with CV38=13 in conjunction with CV56, CV57, CV60 and CV61=3.

Level Crossing lights

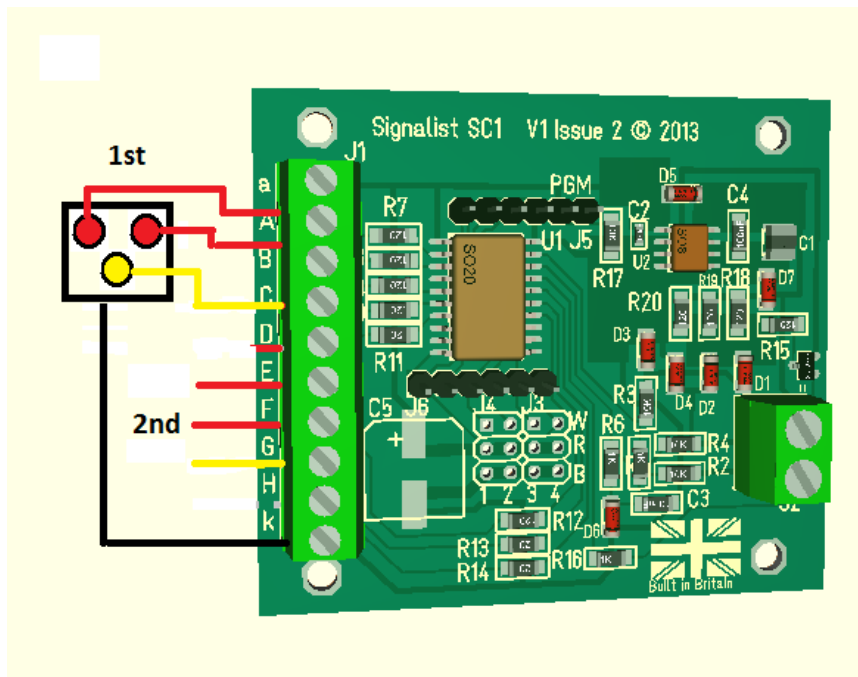


FIGURE 17

Up to two level crossing light sets can be connected to the SC1. This configuration method is compatible with CV38=12 in conjunction with CV56 and CV60=3 and CV57 and CV61=12.

First crossing yellow light controlled by base+1 address with red flashing lights controlled by base address. Sequencing of the lights will need to be done by the control system.

Dapol Semaphore signals

With the addition of the Signallist DP8 module it is possible to control up to eight Dapol semaphore signals with the SC1. The red and black wires from the signals should be connected to 16V AC as recommended by Dapol or R and B terminals of the DP8, and the yellow wires should be connected in pairs to the signal terminals. Terminals A-H and k of the DP8 connect to corresponding terminals on the SC1. The ~ terminals connect to the track or a suitable power source. See the DP8 manual for more information.

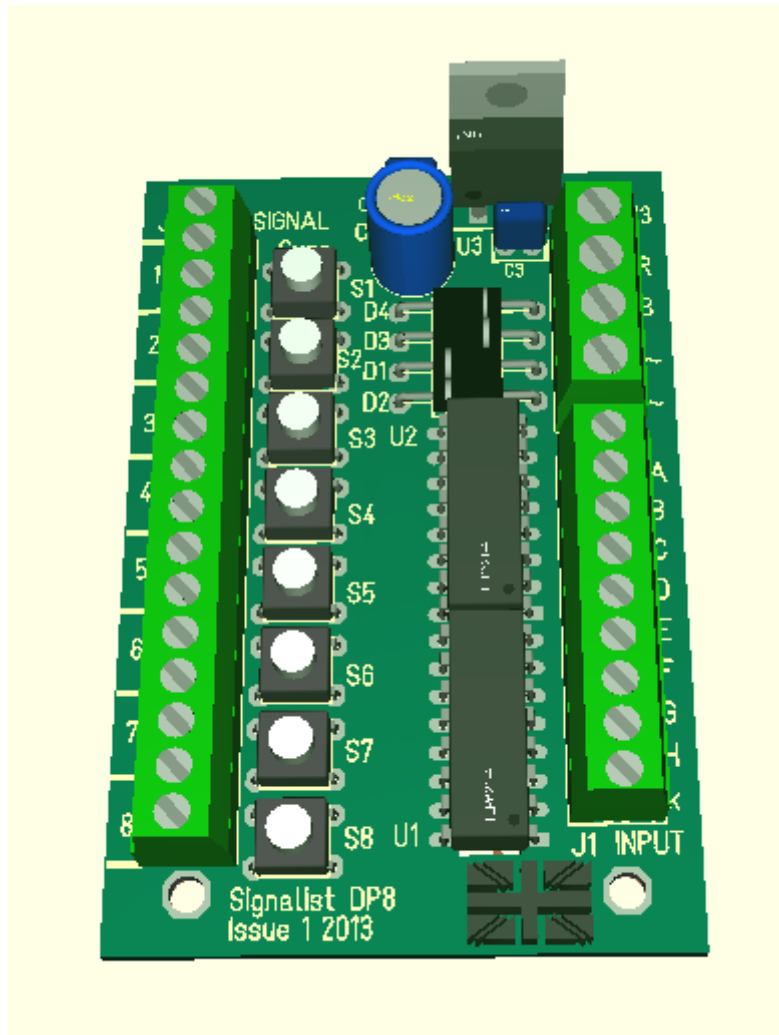


FIGURE 18

The SC1 should maintain synchronisation with the signal once set up even during power outages to the SC1, but if power is lost to the signal while the SC1 is powered synchronisation may be lost. If synchronisation is lost and a signal needs to be synchronised just activate the synchronisation button.

This configuration method is compatible with CV38=15. Operation is the same as for 2-aspect colour light signals.

Configuration of the SC1

Configuring the SC1 is quite straightforward and may be as simple as just setting the DCC address.

DCC decoder address configuration

The SC1 occupies a contiguous block of up to eight accessory addresses and can be set to use any accessory address or extended accessory address. The address is set in CV1 and CV9. The SC1 supports both decoder address mode and output address mode. The address mode can be changed with CV29.

Setting the address with decoder address mode (default) when CV29=128

With the default setting of CV29=128 and CV9=0 it is possible to simply set the decoder address to any address between 1 and 63 by writing the decoder address to CV1. This will allow the use of accessory addresses 1-252. If accessory addresses are required outside this range it will be necessary to change CV9 as well.

The values of CV1 and CV9 can be calculated from the following formula:-

$$\text{First accessory address} = \text{CV9} \times 256 + \text{CV1} \times 4 - 3$$

With CV29 set to 128 values of CV1 above 63 are not allowed, and 63 will not work for configurations that use more than four addresses. CV9 can have values 0-7, values above 7 are not allowed.

See note overleaf about variations in addressing used in some command stations.

Setting the address with output address mode when CV29=192

If you change CV29 from the default to 192 the effect of CV1 will change. With CV9=0 it is now possible to write a value between 1 and 255 to CV1 which will allow the use of accessory addresses 1-258. If accessory addresses are required outside this range it will be necessary to change CV9 as well.

The values of CV1 and CV9 can be calculated from the following formula:-

$$\text{First accessory address} = \text{CV9} \times 256 + \text{CV1}$$

CV9 can have values 0-7, values above 7 are not allowed. With CV29 set to 192 CV1 can have any value between 1 and 255, but values above 248 will not work for some configurations.

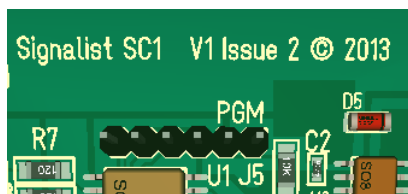
See note overleaf about variations in addressing used in some command stations.

Setting the address automatically

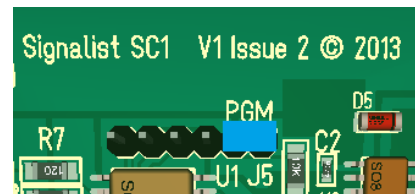
It is possible to set the decoder address automatically using the PGM jumper. To set the address automatically use the following steps.

1. Power off the SC1.
2. Fit the PGM jumper to pins 1 and 2 of J5.
3. Power on the SC1.
4. Operate the desired base address on your command station to both Normal and reverse.
5. Power off the SC1.
6. Remove the PGM jumper.
7. Power on the SC1

The address will now be set in CV1 and CV9 in output address mode with CV29 set to 192. The decoder will respond to contiguous addresses starting with the one that was operated. The jumper must be removed for normal operation.



Normal operation



Jumper fitted for programming

Figure 19 – PGM jumper J5 location

Important note: - Many command stations and some software applications do not follow the NMRA accessory numbering scheme, so it is important to be aware that setting the address CVs according to the NMRA formulae used above may not work and some addresses may not be accessible. Lenz, ESU and ZTC are notable in this respect and you will need to make allowance. Some systems can only operate a subset of the accessory range, often limited to addresses below 256 or below 1024 so this may need to be taken in to account also before choosing addresses. If you are not sure how the addressing works on your system use the automatic address setting mode with the PGM jumper.

Setting the signal type

The SC1 needs to be configured to match the signal type that is connected to the J1 terminals by adjustment of CV38. By default CV38 is set to zero which allows the connection of up to four 2-aspect signals. Table 1 shows the different settings allowed in CV38.

CV38	Signal type
0	4x 2-aspect
1	2x 3-aspect or 4-aspect
2	2x 2-aspect with a feather
3	1x 3-aspect or 4-aspect with 3x feathers
4	2x 3-aspect searchlight or 4-aspect searchlight
5	1x 3-aspect or 4-aspect searchlight with 3x feathers
6	1x 3-aspect or 4-aspect (A-D) with feather (E, F) + 1x 2-aspect (G, H)
7	2x 4-aspect allowing dark and flashing aspects
8	8x individually controlled outputs
9	2x 3-aspect with a feather
10	2x 4-aspect searchlight with a feather
11	2x 4-aspect allowing easy manual control
12	4x pairs on together (for level crossing etc.)
13	2x triplets on together (for SPAD indicator etc.) (A-C and D-F)+ pair (G and H)
14	4-aspect (A-D) + 2x 2-aspect (E-F and G-H)
15	Eight Dapol semaphore signals (with adaptor board)
16	2x Great Western twin head searchlight signals**
128	2x 4-aspect using extended accessory protocol
129	4x 3-aspect searchlight using extended accessory protocol
130	2x 3-aspect with feather using extended accessory protocol
131	2x 4-aspect searchlight with a feather using extended accessory protocol
132	2x 4-aspect searchlight using extended accessory protocol
133	1x 3-aspect or 4-aspect with 3x feathers using extended accessory protocol
134	1x 4-aspect searchlight with 3x feathers using extended accessory protocol
135	1x user defined signal using extended accessory protocol *
136	2x LMS home or repeater signals using extended accessory protocol***
137	1x LMS junction signal using extended accessory protocol***

* Requires V0.23 firmware ** Requires V0.27 firmware *** Requires V0.31 firmware

Table 1

Setting the signal polarity

By default the SC1 is configured to work with signals that are wired for common cathode. If common anode signals are used it will usually be necessary to invert the outputs by setting CV35=255. Each output is separately configurable by a single bit in CV35 so it is possible to use a mixture of common anode and common cathode if required, for example setting CV35=15 will set outputs A-D as common cathode with outputs E-H common anode.

Setting the default state

By default the signals will be dark (no aspect showing) when the decoder is reset. It is possible to configure which aspect is shown at reset by changing the value of CV37. Typically it will be desirable for signals to show green (automatic block signals) or red (controlled signals) when the SC1 is reset until it receives commands to set the aspects. Each bit of CV37 maps to an output, bit 0 = output 'H', bit 1 = output 'G' etc. so by setting each bit you can set the relevant LED to be on. Typical values that might be used are CV37 = 136 for a pair of 4-aspect signals to start up on red, or CV37 = 85 for four 2-aspect signals to start up green.

Setting the brightness of individual LEDs

Each output can have its brightness adjusted independently. The default setting of maximum brightness can result in up to 25mA LED current which in many cases will result in the LED being much brighter than is prototypically correct. Different coloured LEDs will behave differently so may appear to be brighter than other similar LEDs of a different colour.

It is possible to simulate a LED series resistor in the range of 120 Ohms (the default) to around 2K Ohms by adjusting the value of the brightness CVs 48-55. CV48 allows the adjustment of the brightness of output 'A', CV49 output 'B' etc. If it is found that values lower than 16 are required it may be beneficial to add a 2.2K Ohms or larger series resistor to the output to prevent the visible flicker which can occur when very low values are being used in these CVs.

Careful adjustment of the red and green (and blue) brightness values can help to adjust the shade of yellow (and lunar) present on searchlight signals. The common pivot light on feathers will typically need to be set to a quarter of the value of the main parts of the feather.

Special effects

While not relevant to signals specifically it is possible to make use of spare outputs on the SC1 for animating the lights on static scenic items. The rotating beacon or flashing strobe effects can be very effective on parked emergency or breakdown vehicles, and the gently flickering oil lamp effect can be handy to illuminate the spectacle plate of semaphore signals more realistically or perhaps some workman's road lamps.

Any unused outputs can be configured to turn on at reset with CV37, and the special effect can be configured with CVs 56-63. CV56 is for output 'A', CV 57 is for output 'B' etc. See Table 2 for the effect assigned to each configuration value. CV38=8 can be useful to control eight individual LED accessories with the SC1.

Value in CV56-63	Effect
0	Always on (default)
1	MARS light
2	Flickering oil lamp
3	Flashing light
4	Single flash xenon strobe
5	Double flash xenon strobe
6	Rotating beacon ('Fuzz' light)
7	Gyalight
8	Fade up and down flashing phase 1
9	Fade up and down flashing phase 2
12	Flashing light (alternate to 3)
14	Flashing portable battery warning light

Table 2

Operation

General

When any aspect is changed on the SC1 the new state is stored in non-volatile memory so that it can be recovered in the event of a power failure and the aspects will be displayed when power is restored as if nothing has happened.

When the SC1 is reset by a DCC reset packet it will load up the default aspect settings stored in CV37. A decoder reset packet is typically sent by the command station following operation of the emergency stop button and when powering up the command station.

2-aspect

Each 2-aspect signal occupies a single accessory address. Operation is by simply toggling the accessory between normal (Green or white for a position signal) and reversed (Red or Yellow for a distant signal).

Operation can be by manual control from a hand controller or automatic from the command station (perhaps using layout automation software or route setting).

State	Home	Distant	Position
Normal	Red	Yellow	Red
Reverse	Green	Green	White

Table 3

Signals with a feather will use the next consecutive address to control the feather. The feather will only illuminate if the signal is showing the green aspect.

If used with JMRI the signal head type is Single Output.

3 or 4-aspect (except CV38 = 7 and extended accessory protocol)

Each 4-aspect signal occupies two consecutive accessory addresses. The lower address toggles between red or green and yellow or double yellow while the higher address toggles red or yellow and green or double yellow. On 3-aspect signals the double yellow aspect will display as single yellow. The second signal will use base+2 and base+3 or if with a feather base+3 and base+4.

Base state	Base+1 state	Aspect
Normal	Normal	Red
Reverse	Normal	Green
Normal	Reverse	Yellow
Reverse	Reverse	Double Yellow

Table 4

Signals with multiple feathers will use the next two consecutive addresses to select the feather according to Table 5. Signals with a single feather will only use the base+2 address (Base+5 for the second signal).

Base+2 state	Base+3 state	Feather
Normal	Normal	None
Reverse	Normal	Feather 1
Normal	Reverse	Feather 2
Reverse	Reverse	Feather 3

Table 5

3-aspect or 4-aspect when CV38 = 7 or 11

This setting is available in order to allow for the extra flashing red, yellow, double yellow or green aspect to be displayed and to make manual operation of 4-aspect signals much simpler. Each of the four aspects is assigned to its own accessory address and reversing that address will cause that aspect to be displayed regardless of the previous aspect. This makes for very quick manual operation compared to the other methods. Setting the four addresses to normal will extinguish the signal making it dark. Automation software such as JMRI uses this method to create the flashing aspects by alternating between dark and on. There is no truth table for this method since the aspect displayed is simply the last one selected as shown in Table 6.

State	Aspect
Normal (any)	Dark*
Reverse base	Red
Reverse base+1	Green
Reverse base+2	Yellow
Reverse base+3	Double yellow

*NOTE CV38=7 only

Table 6

On 3-aspect signals the double yellow aspect will display as single yellow.

If used with JMRI signal type is Quad Output where Green output is base+1, Yellow output is base+2, Red output is base and Lunar output is base +3. The second signal uses the next block of four addresses.

Extended accessory protocol

The extended accessory protocol allows multi-aspect signals to be set using a single command on command stations that support it (Sprog, Digitrax, NCE and EasyDCC support the extended accessory protocol). Each signal occupies just a single signal address regardless of its number of aspects instead of a group of turnout addresses. The extended protocol allows a larger number of signals to be controlled and reduces the number of commands required to set the aspects and flashing aspects are managed within the decoder. The reduced data overhead and freeing of addresses can be a real boon on a large layout where response to commands will be significantly improved.

Extended accessory protocol when CV38 = 128 – 134

These settings are available in order to allow the use of extended accessory protocol. Where a signal has a single route indication it will be activated by the matching turnout accessory

address but where a multiple route indication is available it will use the next consecutive extended address. Aspect numbers are Red (0), Green (2), Yellow (1), Double Yellow (3), Flashing Red (4), Flashing Green (6), Flashing Yellow (5), Flashing Double Yellow (7) and Dark (8). Flashing aspects are not support before firmware v0.18. In JMRI use the 'DCC Signal decoder' type. Other aspect values will show as dark.

List of CVs

Here is the CV list for the current 0.21 revision of the firmware. This list may change with future firmware revisions.

All CVs are listed, but some are of no relevance to operating UK signals so have not been discussed in this document. The firmware is common to the current range of Signalist accessory decoders.

CV	Alt. CV	Def. value	Range	Description	Notes
1	513	1	0-255	Lower address bits	0-63 only for decoder address mode
3	515	0	0-144	Output on time in 10mS increments	0=constant, 1=10mS, 100=1S, 144=1.44S
4	516	0	0-144	Output on time in 10mS increments	0=constant, 1=10mS, 100=1S, 144=1.44S
5	517	0	0-144	Output on time in 10mS increments	0=constant, 1=10mS, 100=1S, 144=1.44S
6	518	0	0-144	Output on time in 10mS increments	0=constant, 1=10mS, 100=1S, 144=1.44S
7 (rd)	519	9	-	Software release number	Accessory firmware
7 (wr)	519	0	0,1,2,10,11,12,20,21,22	LokMaus2	Used for LokMaus2 programming mode
8 (rd)	520	98	-	Manufacturer ID	98 = Harman DCC
8 (wr)	520	-	8	Factory Reset	8= Reset to defaults
9	521	0	0-7	Upper address bits	
29	541	128	128,192	Configuration bits	192=output address mode, 128=decoder address mode
33	545	0	0-127	Mode	Bits 0-3 as MERG toggle mode, bit 6 Roco momentary mode

34	546	8	0,8	ACK pin	Do not change (ack load on pin 11)
35	547	0	0-255	invert	Each bit inverts an output pin when set to 1
37	549	0	0-255	Default output state	Each bit will set an output to be active at reset
38	550	0	0-7	Decoder type	See decoder type table 1 above
48	560	255	0-255	Brightness of output A	Maximum brightness =255, minimum brightness =1 (minimum =16 if avoiding flicker)
49	561	255	0-255	Brightness of output B	
50	562	255	0-255	Brightness of output C	
51	563	255	0-255	Brightness of output D	
52	564	255	0-255	Brightness of output E	
53	565	255	0-255	Brightness of output F	
54	566	255	0-255	Brightness of output G	
55	567	255	0-255	Brightness of output H	
56	568	0	0-15	Special effect for output A	0= Constantly on, 1=MARS lamp, 2=Oil lamp, 3=Flashing, 4=Single strobe, 5=Double strobe, 6=Rotating beacon, 7=Gyralight, 8=fade up and down flashing phase 1, 9=fade up and down flashing phase 2, 12=Flashing (inverse to 3), 14= flashing portable battery light.
57	569	0	0-15	Special effect for output B	
58	570	0	0-15	Special effect for output C	
59	571	0	0-15	Special effect for output D	
60	572	0	0-15	Special effect for output E	
61	573	0	0-15	Special effect for output F	
62	574	0	0-15	Special effect for output G	
63	575	0	0-15	Special effect for output H	
112				Major version No. in hex	Ex where x is the major version number
113				Minor version No. in hex	xx where xx is the minor version number
192-224		255	0-255	Output pattern for user defined aspects 0-31 when CV38=135	Eight bits relate to the eight outputs A-H, bit set to 1 is output on.

Configuration of automation software

The SC1 can be operated by most automation software. The following should help in the SC1 specific configuration. Full instructions on how to implement the software are outside the scope of what can be included here.

Railroad & Co

Railroad & Co and the related Roco bundled Rocomotion support any of the 'Truth Table' modes of the SC1 where CV38 is set to 0-6. Configuration instructions here are based on the current version 8 of RR&Co.

RR&Co by default can only show US and European aspects. To get RR&Co to display feathers and more realistic aspect displays it will be necessary to purchase the Gold version and customise the signal icons.

4-Aspect signals

Any 4-aspect signal can be implemented where CV38=1,3,4 or 5. After placing the signal on to the track diagram, right click and select the signal properties and set the connection tab as below in Figure 20.

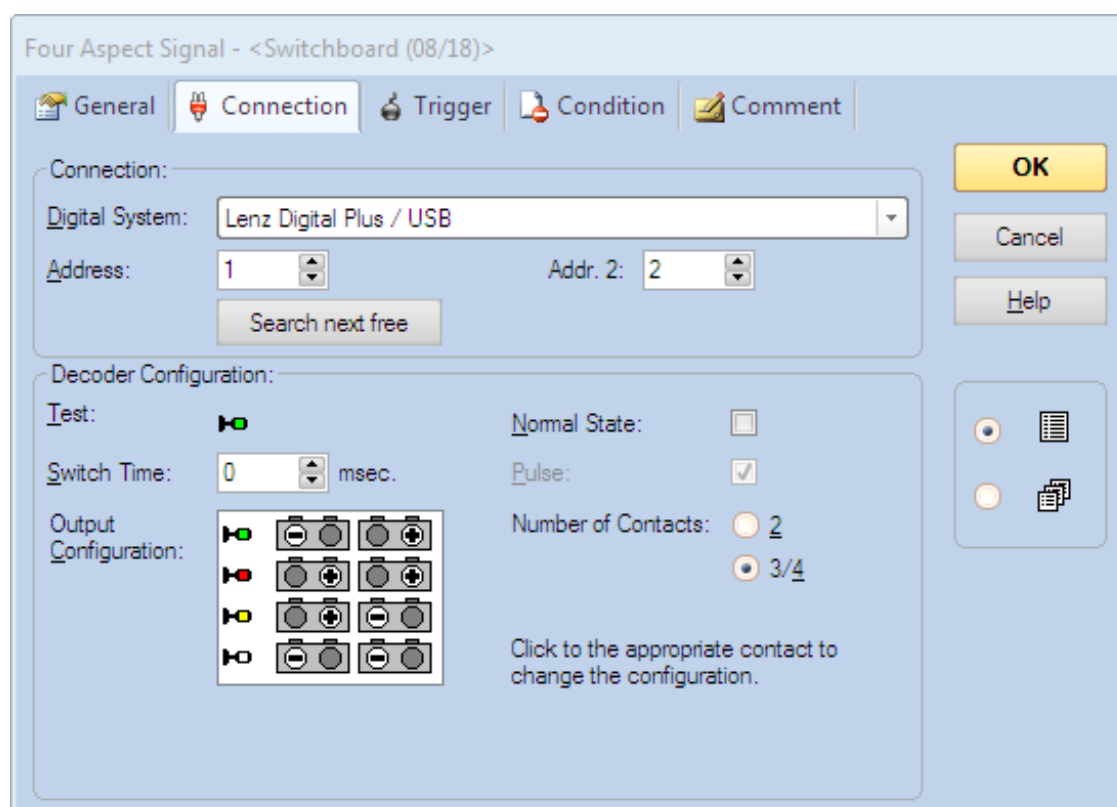


FIGURE 20

I have used the default US searchlight signal here where the four aspects are shown as Green, Red, Yellow and Lunar (white). The Lunar aspect is used to display double yellow.

Address is always the base address of the signal (base address of the decoder for the first signal, or base address of the decoder + 2 for the second signal). Addr.2 will always be address +1. If your command station works in reverse as regards what is normal and reverse you will have to exchange all the + with – in the output configuration section – the configuration shown here is for Lenz and compatible systems, Roco will work in reverse to this.

3-Aspect signals

Again any 3-aspect signal can be implemented where CV38=1,3,4 or 5. After placing the signal on to the track diagram, right click and select the signal properties and set the connection tab as below in Figure 21.

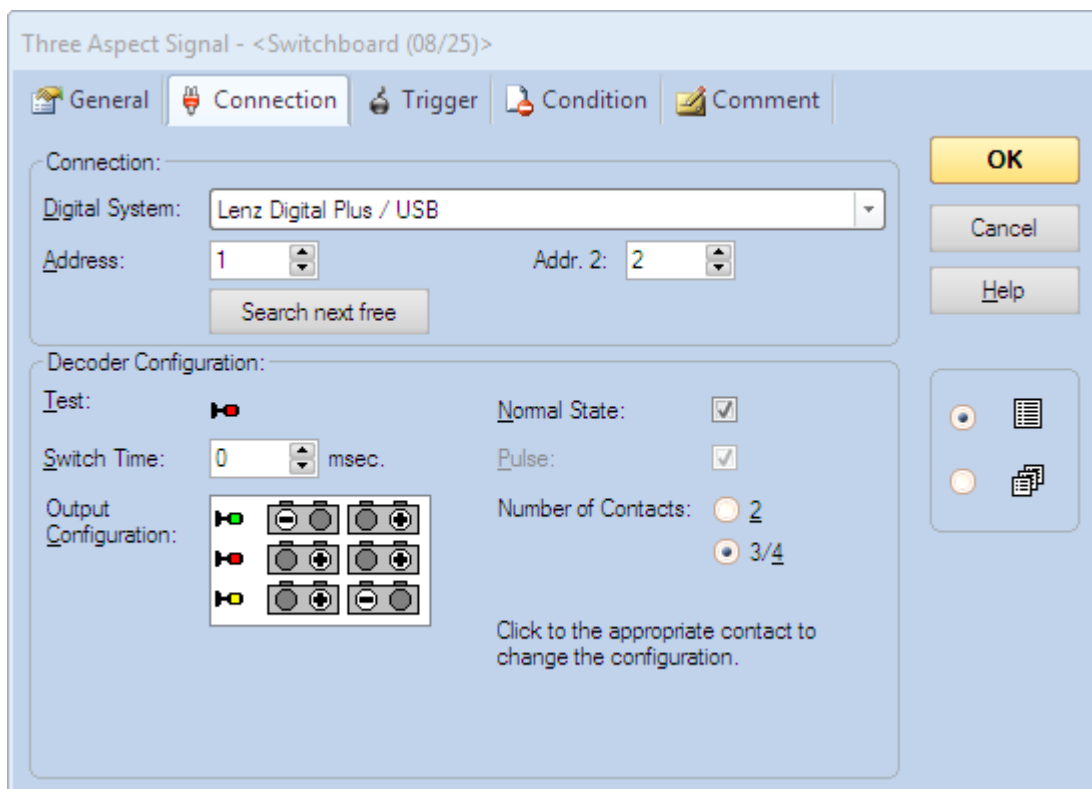


FIGURE 21

I have used the default searchlight signal here where the three aspects are shown as Green, Red, and Yellow which will be OK for some installations, but for multi-aspect representations and feathers new icons will need to be created in the Gold version.

Address is always the base address of the signal (base address of the decoder for the first signal, or base address of the decoder + 2 for the second signal). Addr.2 will always be address +1. If your command station works in reverse as regards what is normal and reverse you will have to exchange all the + with – in the output configuration section – the configuration shown here is for Lenz and compatible systems, Roco will work in reverse to this.

2-aspect signals

2-aspect signals can be implemented where CV38=0 or 2. After placing the signal on to the track diagram, right click and select the signal properties and set the connection tab as below in Figure 22.

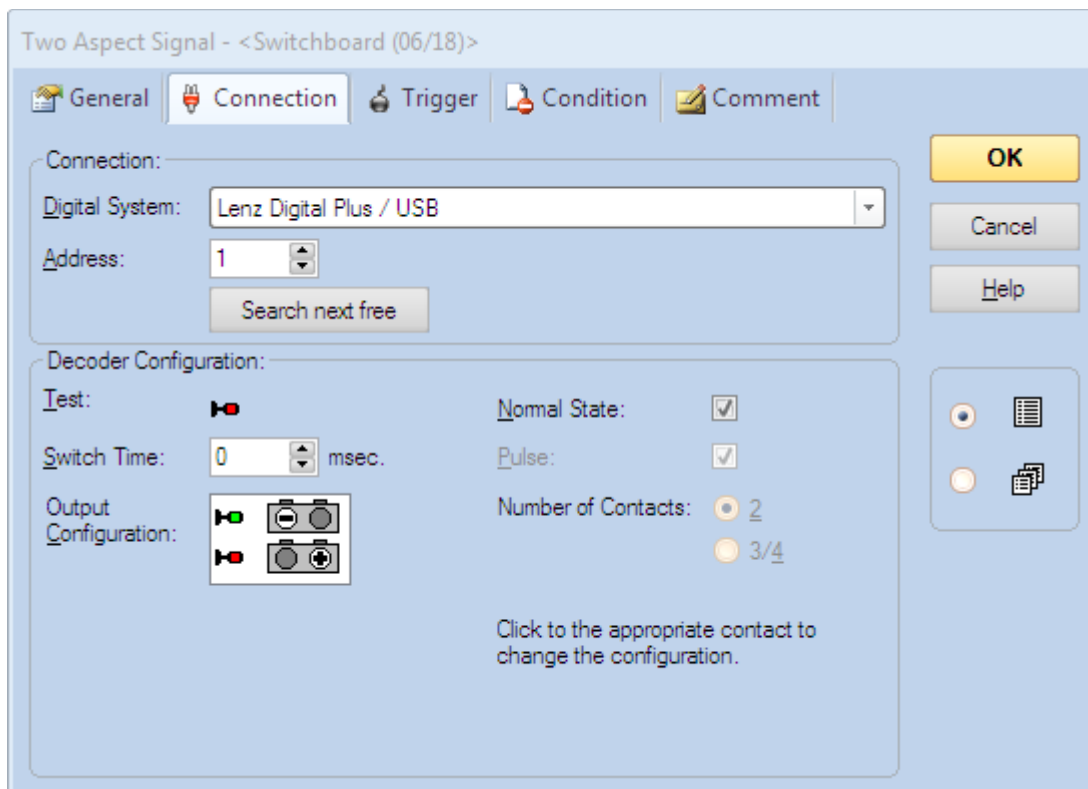


FIGURE 22

I have used the default searchlight signal here where the two aspects are shown as Green and Red which will be OK for some installations, but for multi-aspect representations and feathers new icons will need to be created in the Gold version. There is no simple implementation of a Green and Yellow distant, this is covered below.

Address is always the base address of the signal (base address of the decoder for the first signal, or base address of the decoder + 1 for the second signal etc. except where feathers are used and the second signal will be decoder base address +2).

If your command station works in reverse as regards what is normal and reverse you will have to exchange all the + with – in the output configuration section – the configuration shown here is for Lenz and compatible systems, Roco will work in reverse to this.

2-aspect distant

2-aspect distant signals can be implemented where CV38=0 or 2 but they do not have native support in RR&Co. To implement a distant it will be necessary to use a 3-aspect signal and just ignore the red aspect. After placing the 3-aspect signal on to the track diagram, right click and select the signal properties and set the connection tab as below in Figure 23.

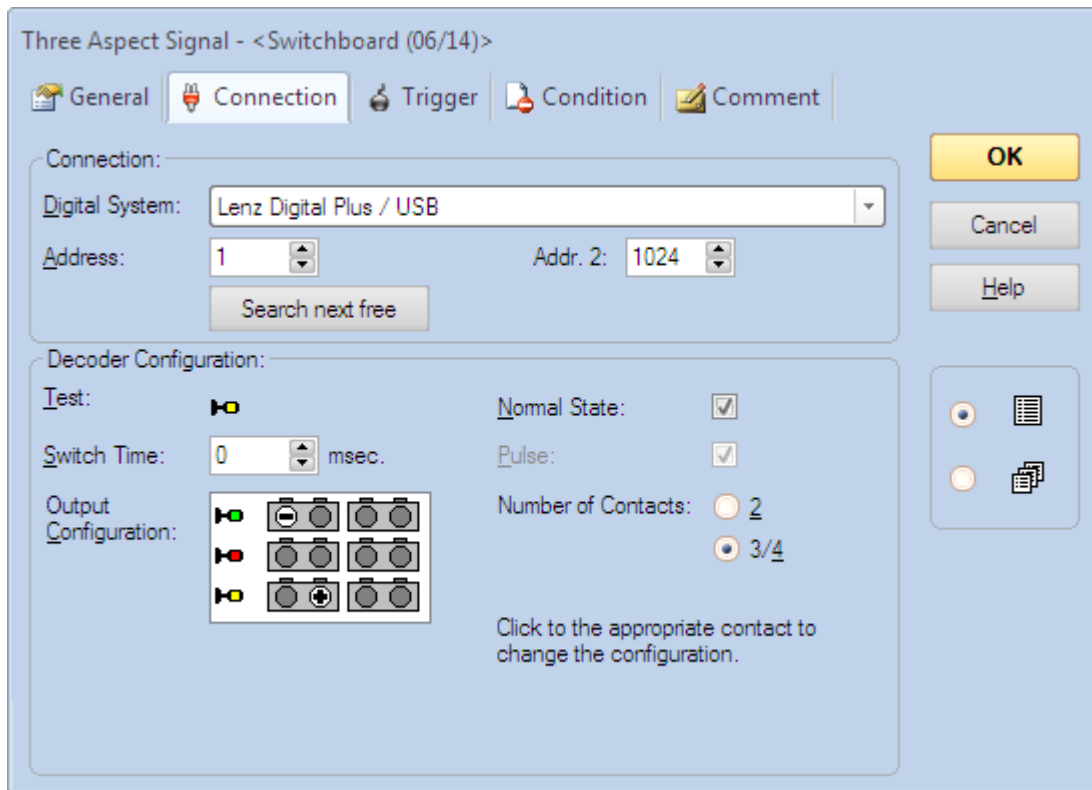


FIGURE 23

As you can see the red aspect has been ignored and Addr. 2 has been set to a dummy value (1024 in this case, but any unused address that you do not intend to use will suffice). It is just important that you do not allow the signalling logic set the signal to red because RR&Co can still display red on the track diagram even though it cannot switch the actual signal to red.

Similar configuration can be done using a 4-aspect signal to create a 3-aspect (green, yellow, double yellow) distant.

JMRI

JMRI is a suite of open source programs to aid layout automation. It is outside the scope of this manual to cover the full functionality and configuration of JMRI, but I will show how to configure individual signal heads to match the configuration within the SC1 decoder. JMRI is not quite as intuitive as RR&Co and is not always consistent in how it describes things and the selection of configuration items can be confusing. It does in some ways offer more flexibility than RR&Co, and being open source you can always modify JMRI to suit what you are trying to do. The following is based on JMRI version r21399 but newer versions like 3.6 can be used. I have referred here to signal heads for simplicity, but for practical purposes signal masts can be used instead.

To get to the signal head table you will need to launch one of the JMRI programs (I have used PanelPro here in figure 24) and then from the Tools menu choose Tables > Signals > Signal Heads.

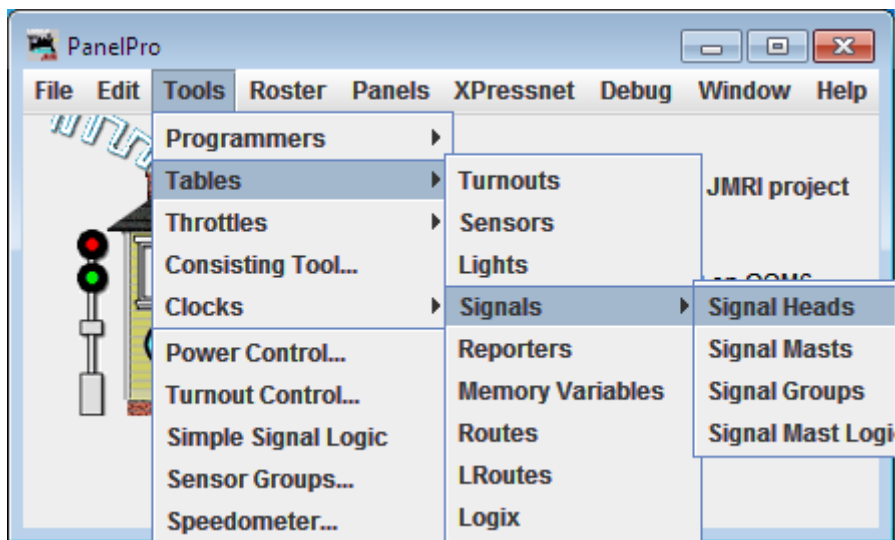


FIGURE 24

2-aspect signal configuration

To add a new signal head in the signal head table click on the 'Add' button. In the 'add new signal' window choose Single Output. Put the signal DCC address in the Green output number. Appearance when closed will always be Green, but you can choose Red or Yellow for appearance when Thrown depending on whether your signal is home or distant.

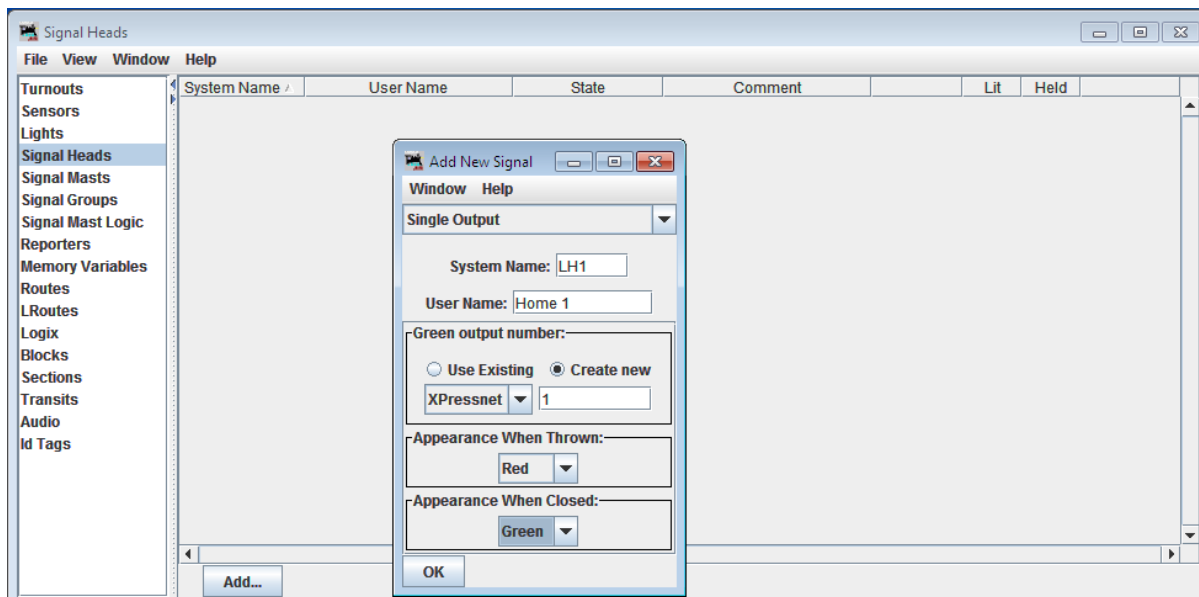


FIGURE 25

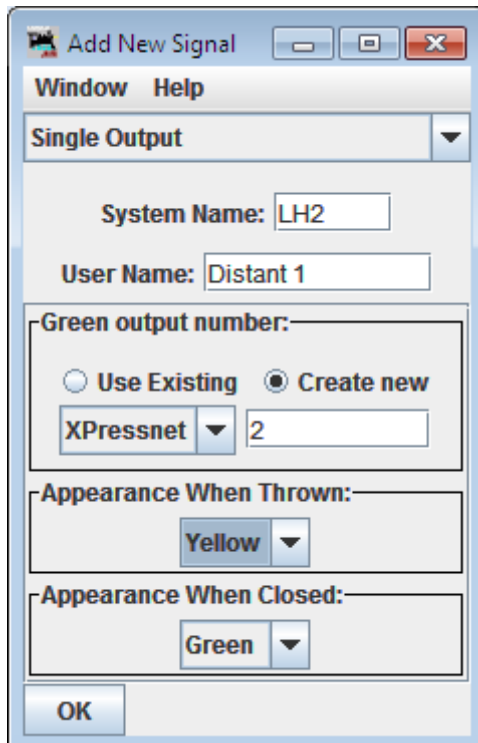


FIGURE 26

Figure 26 shows the configuration for a distant. 2-aspect configuration applies to CV38=0, 2, 6 or 10.

3-aspect signal configuration

3-aspect configuration is a little more complex. When adding a signal head you will need to choose MERG Signal Driver. Choose 3 aspects and input1 is the base signal DCC address (base decoder address for the first signal or base decoder address + 2 for the second signal) while Input2 is Input1 + 1

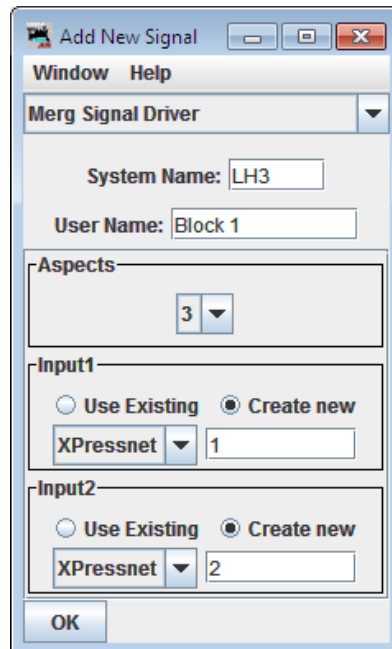


FIGURE 27

Because the MERG decoder reverses the Red and Green connections it is necessary to reverse Input 1 in the turnout table. Just tick the inverted box next to the address used for Input1. This configuration is suitable for CV38=1, 3, 4, 5, 6, 9, 10 or 14.

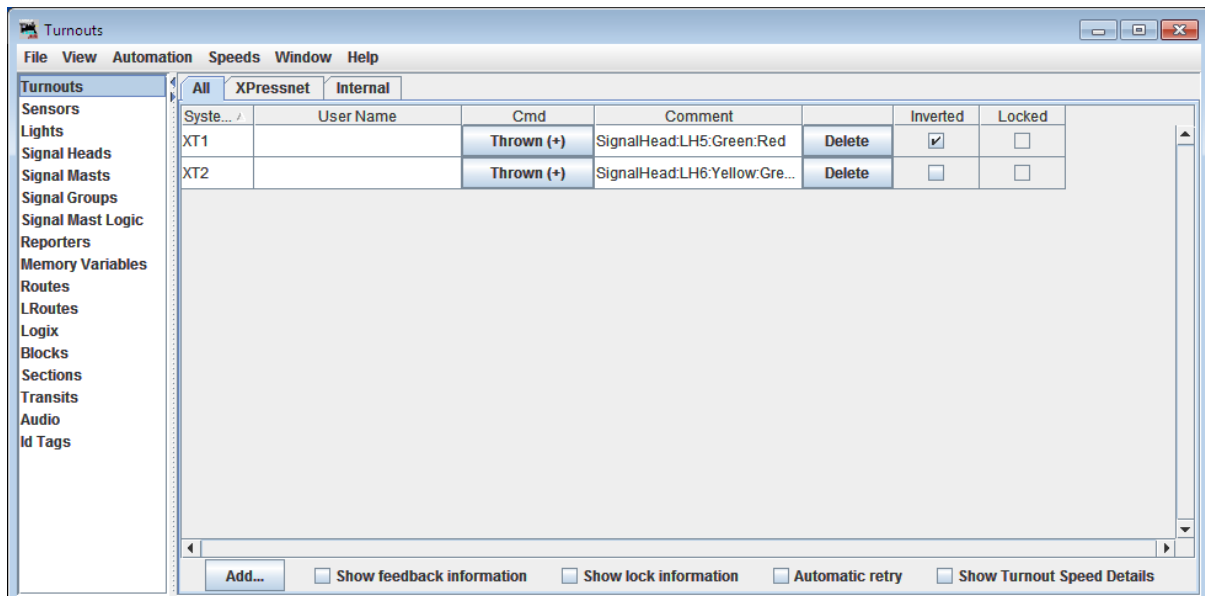


FIGURE 28

4-aspect signal configuration

There is no suitable 4-aspect truth table driver built in to JMRI so for 4-aspect signals it is necessary to set CV38 to 7 (or 11 if flashing and dark aspects are not desired) and use the Quad Output driver. In 4-aspect signals JMRI refers to the double yellow aspect as Lunar. Red output number is the decoder base address, Green output number is the decoder base address +1, Yellow output number is the decoder base address +2 and Lunar output number is decoder base address +3 (add 4 to each of these for the second signal).

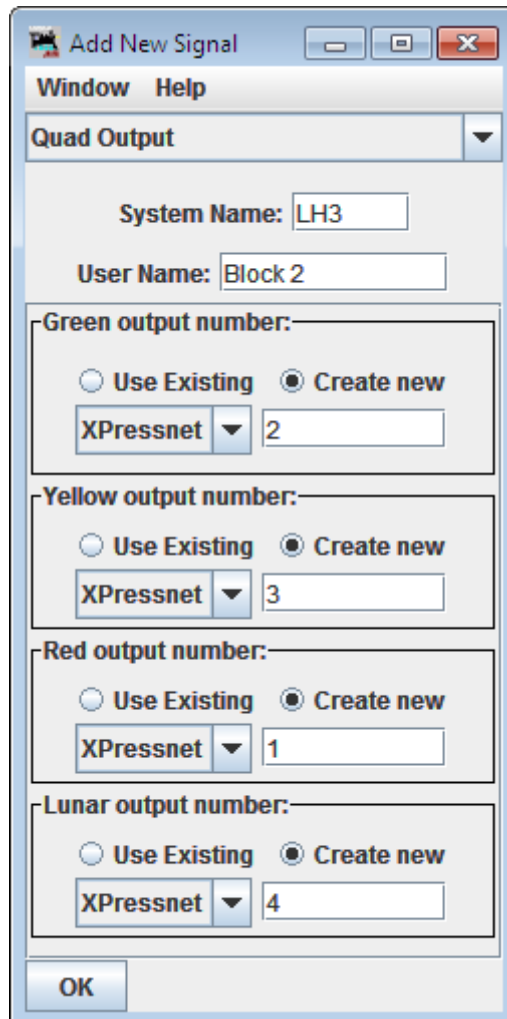


FIGURE 29

This configuration mode offers the maximum flexibility of aspects when using the standard accessory addresses including flashing Red, Green, Yellow and Double Yellow as well as the standard aspects and dark is available too to create approach lit signals.

Extended accessory protocol signal configuration

JMRI is one of the few applications to support the advanced signal protocol so it makes sense to use it if your command station supports it for any signal with more than two aspects. All extended protocol signals are configured the same in JMRI regardless of CV38 setting or number of aspects. Using the extended accessory protocol makes configuration a lot easier if it is available as shown in Figure 30.

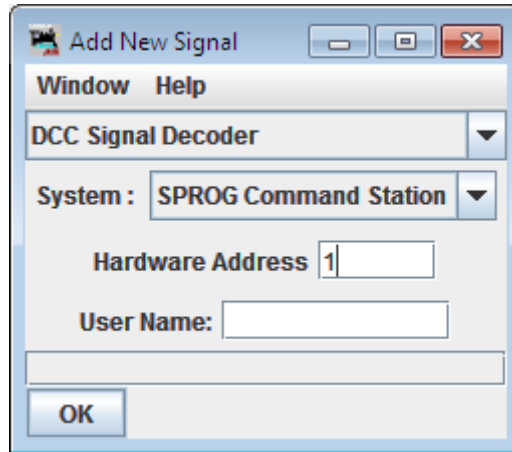


FIGURE 30

Regardless of how many aspects your signal has you just need to select the DCC Signal Decoder type as in figure 30 and set the Hardware Address to base for the first signal, base +1 for the second signal, base+2 for the third or base+3 for the fourth. This is suitable for CV38=128-135

RocRail

RocRail is free to download layout automation software, although they do ask for a donation. I will not cover the full configuration of RocRail because it is outside the scope of this manual, but just the configuration of signals. RocRail is very European-centric and will take quite a lot of customisation to give a UK look to the signal elements. Being European a lot of the language and terms used are likely to be unfamiliar.

To add a signal to your RocRail map go to the Tables menu and choose Signals.

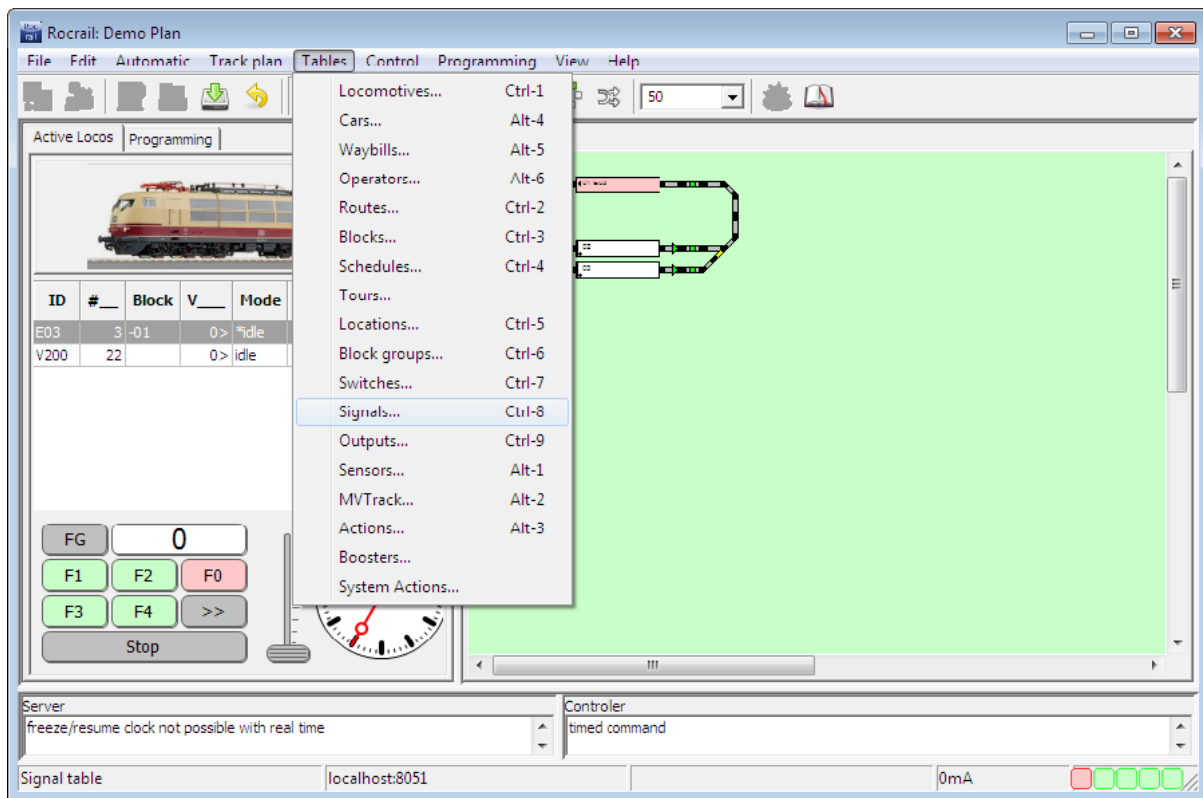


FIGURE 31

In the Signal table click New to add a new signal entry to the table. Click the new entry to highlight it.

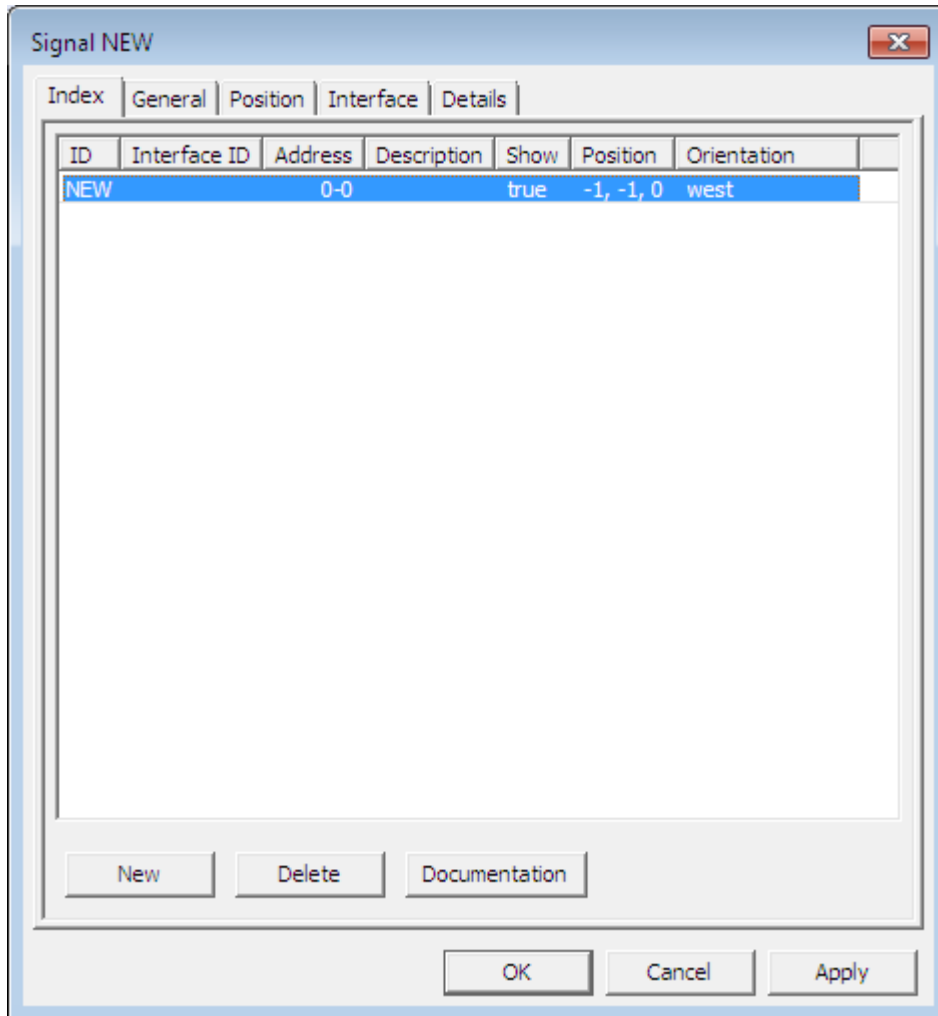


FIGURE 32

In RocRail the addressing expects you to be using a NMRA 4-output accessory decoder using decoder addressing mode so the address referred to is the NMRA Decoder address and the port number is the output on that decoder. For example this will mean that accessory addresses 1-4 will be on decoder address 1 ports 1-4, accessory addresses 5-8 will be on decoder address 2 ports 1-4. Since you will probably be using a single decoder to operate multiple signals it will be necessary to set any ports that you are not using to address 0 which makes it inactive. The following shows the interface tab set for a 2-aspect signal using the first signal on a decoder. The type 'Patterns' must be used for truth-table modes (where CV38 = 0-6, 9-10 or 14).

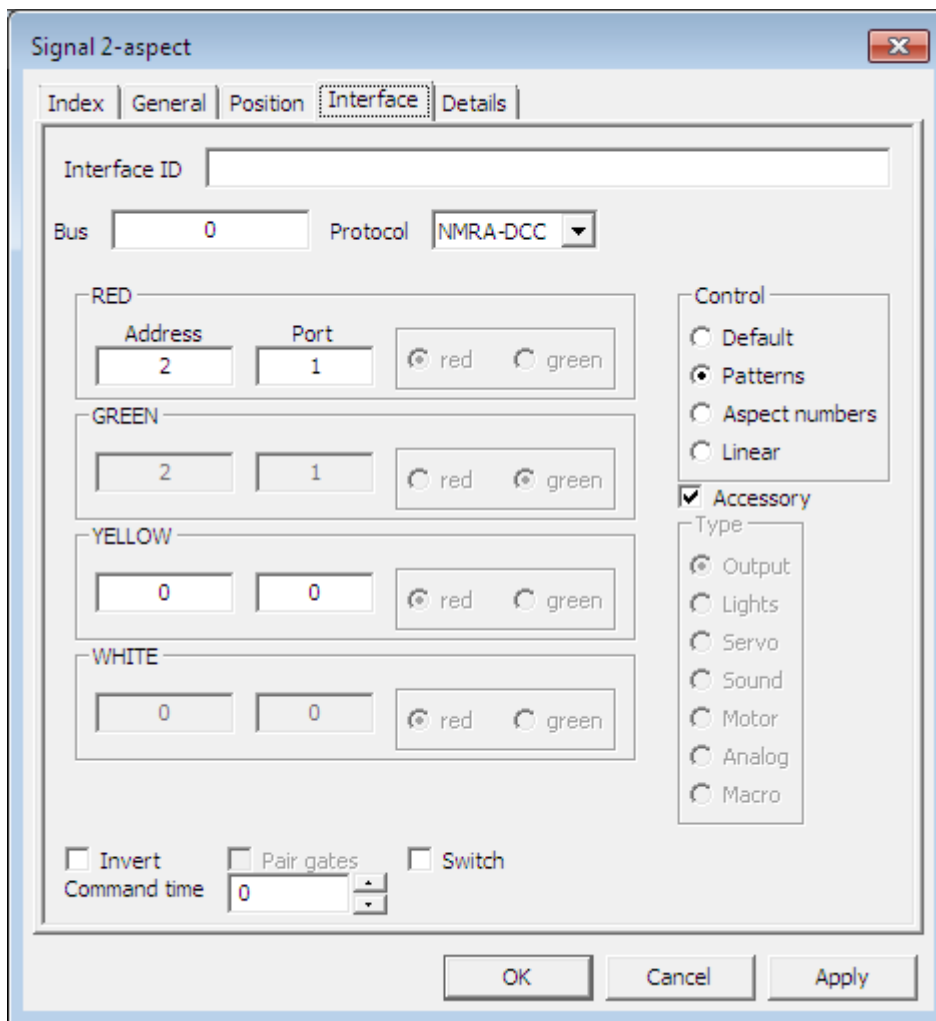


FIGURE 33

When you have configured a signal you can test it by clicking on the new signal icon on the map and it will cycle through the aspects in a strange order red – green – double yellow (referred to as white and displays green/yellow on the map) – yellow.

If you have a system that reverses the sense of Normal and Reverse (referred to as R for normal and G for reverse in RocRail) like Roco you just need to exchange the Rs for Gs and vice versa in the details page.

RocRail 2-aspect home signal configuration

For a 2-aspect signal set the interface tab as in figure 33. In the RED box set Port to be 1 for outputs A and B, 2 for outputs C and D, 3 for outputs E and F and 4 for outputs G and H. In the YELLOW box both Address and Port should be set to 0 because they are not used.

In the Details tab chose Light signal as signal type, Main signal as signification and Aspects should be 2.

Under the green entry select G1 for the RED Address and N for the YELLOW Address, and under the red entry choose R1 for the RED Address and N for the YELLOW Address. All other entries are unused so must be set to N.

Signal 2-aspect

Index | General | Position | Interface | **Details**

Signal type
 Semaphore signal
 Light signal

Signification
 Distant signal
 Main signal
 Shunting signal

Aspects: 2
Prefix:

Dwarf signal

Patterns

Aspect:	RED Address:	YELLOW Address:	Number:
green	<input type="radio"/> R1 <input checked="" type="radio"/> G1 <input type="radio"/> N	<input type="radio"/> R2 <input type="radio"/> G2 <input checked="" type="radio"/> N	0
red	<input checked="" type="radio"/> R1 <input type="radio"/> G1 <input type="radio"/> N	<input type="radio"/> R2 <input type="radio"/> G2 <input checked="" type="radio"/> N	0
yellow	<input type="radio"/> R1 <input type="radio"/> G1 <input checked="" type="radio"/> N	<input type="radio"/> R2 <input type="radio"/> G2 <input checked="" type="radio"/> N	0
white	<input type="radio"/> R1 <input type="radio"/> G1 <input checked="" type="radio"/> N	<input type="radio"/> R2 <input type="radio"/> G2 <input checked="" type="radio"/> N	0
blank	<input type="radio"/> R1 <input type="radio"/> G1 <input checked="" type="radio"/> N	<input type="radio"/> R1 <input type="radio"/> G1 <input checked="" type="radio"/> N	0

OK Cancel Apply

FIGURE 34

This configuration is valid for CV38=0, 2, 6 or 14.

RocRail 2-aspect Distant configuration.

The distant configuration in RocRail is not completely straightforward. In the details tab shown in Figure 35 you will need to set Aspects to 3, set the red entry to RED Address N and the yellow entry to RED Address R1. Although the signal can only show Yellow and Green it is configured in RocRail as a 3-aspect so it is possible to set it to red within RocRail if you are not careful.

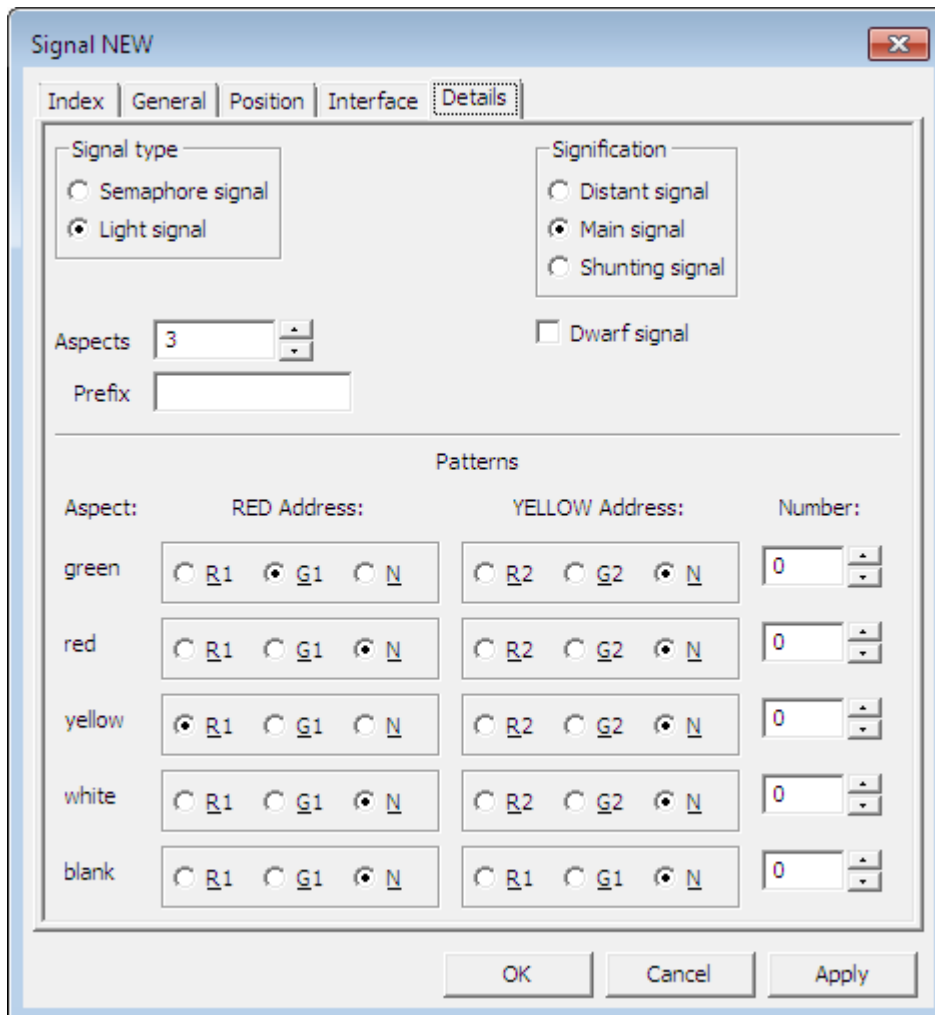


FIGURE 35

This configuration is valid for CV38=0, 2, 6 or 14.

RocRail 3-aspect configuration.

For a 3-aspect signal set the interface tab as in Figure 36. The RED port will be 1 and YELLOW port will be 2 for the first signal on outputs A-D or RED port will be 3 and YELLOW port will be 4 for the second signal on outputs E-H. Control is Patterns and the address will be the decoder address and not the output address. Aspect numbers should be used instead of Patterns when extended modes are used (where CV38=128-135).

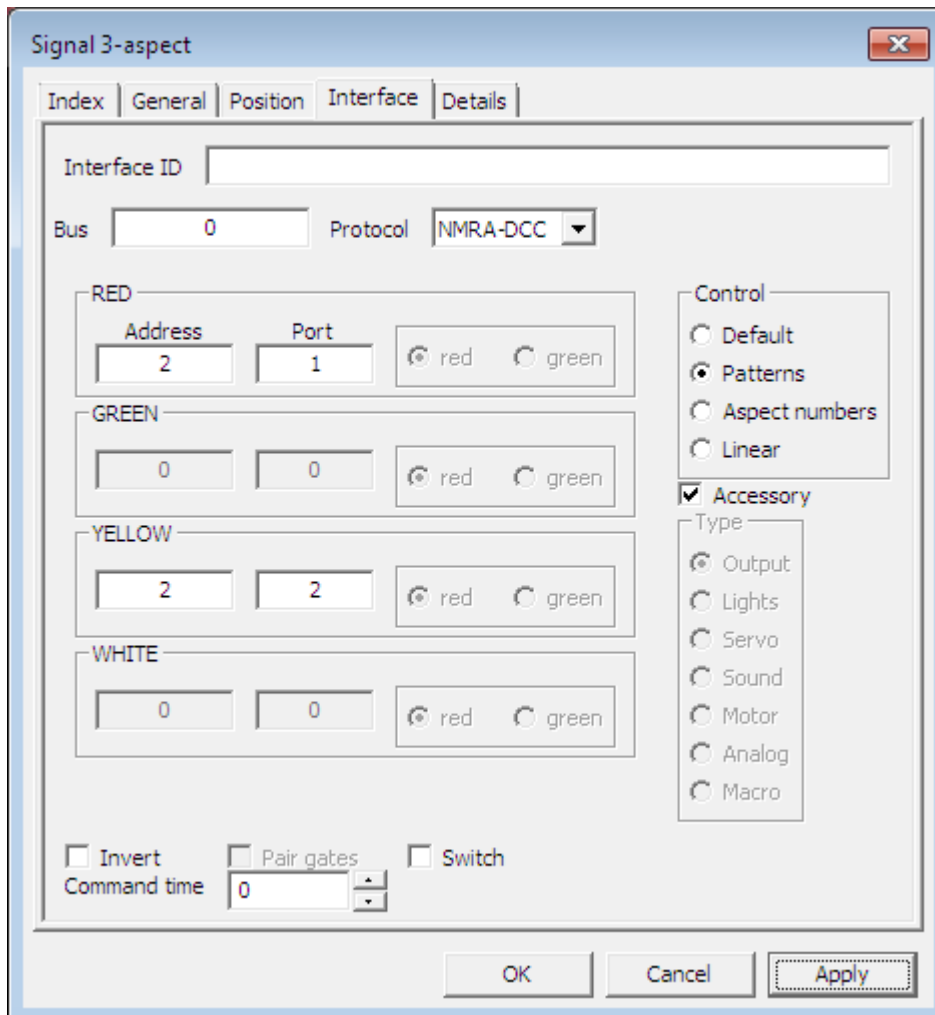


FIGURE 36

Set the Details tab as in Figure 37. Aspects should be 3, green entry should have RED Address G1 and YELLOW Address R2, red entry RED Address R1 and YELLOW Address R2 and yellow entry should have RED Address R1 and YELLOW Address G2. The Number field should be filled in with green=2, red=0, yellow=1 and blank=8 if CV38=128-135.

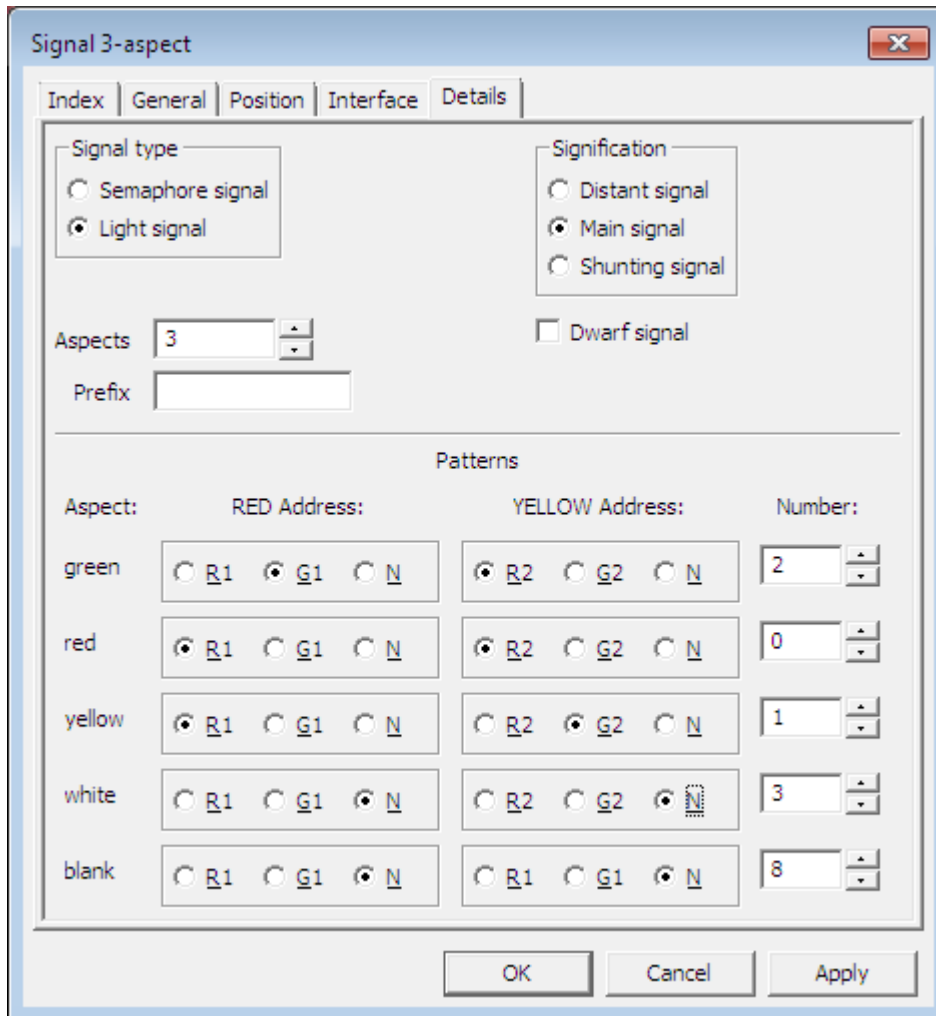


FIGURE 37

This configuration will work for CV38=1, 3, 4, 5, 6, 9, 10 or 14.

RocRail 4-aspect signal configuration

4-aspect signal configuration in RocRail is much the same as the 3-aspect. Set the interface tab the same as the 3-aspect configuration shown in Figure 36. The fourth double yellow aspect is referred to as white in RocRail and is similar to the Lunar aspect in other systems. The details tab should be set as in Figure 38. Aspects is 4, green has RED Address G1 and YELLOW Address R2, red has RED Address R1 and YELLOW Address R2, yellow has RED Address R1 and YELLOW Address G2 and white has RED Address R1 and YELLOW Address G2. The Number field should be filled in with green=2, red=0, yellow=1, white=3 and blank=8 if CV38=128-135.

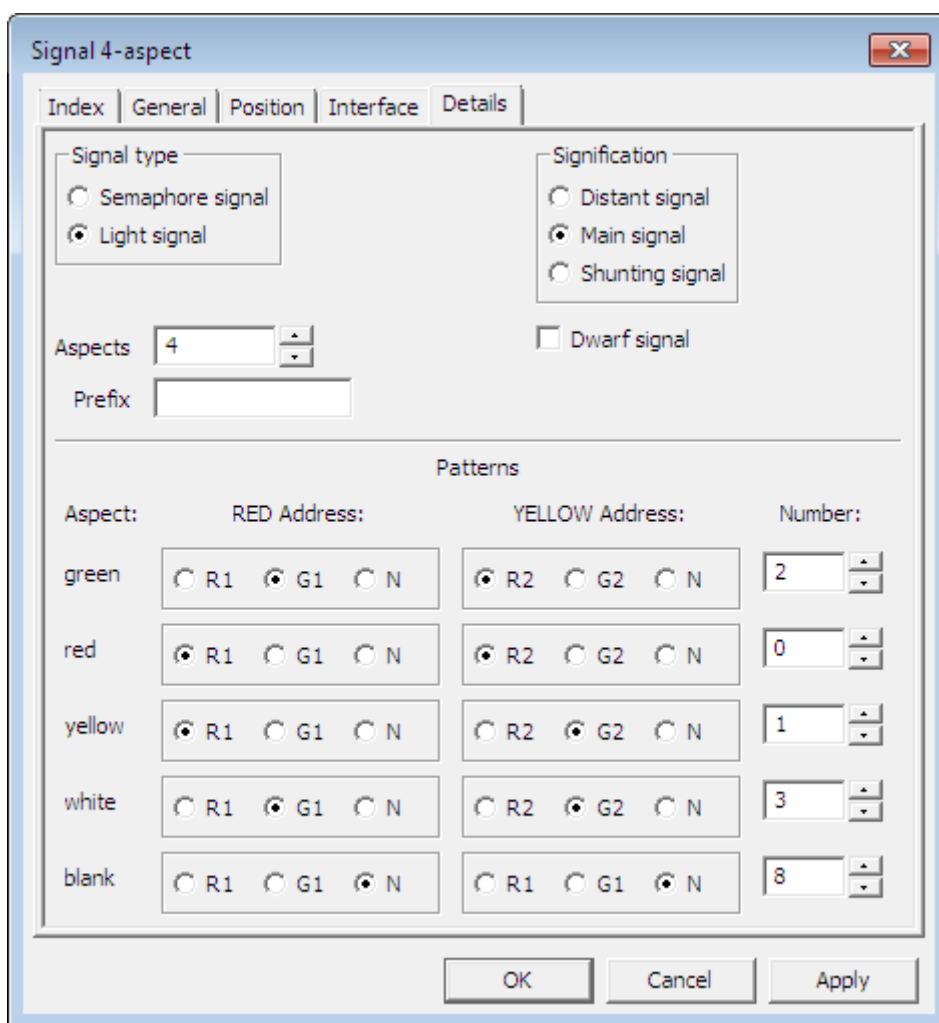


FIGURE 38

This configuration is suitable for CV38=1, 3, 4, 5, 6, 10 or 14.

Specification

Maximum track voltage	24V*
Minimum track voltage	12V with 100mA load* 8V with 50mA load
Output voltage	5V
Output current	25mA per output (overload limited) 100mA total (overload limited)
Current consumption	10mA
Number of outputs	8
Protocol supported	NMRA basic accessory decoder (turnout) NMRA extended accessory decoder (signal)
Address modes supported	Decoder address mode Output address mode
Programming modes supported	Direct bit Direct byte Page** Automatic address (using jumper)

* Good ventilation is required when using track voltage above 18V or at maximum load to prevent overheating.

** Page mode is only provided as a fall-back in the event that Direct modes do not work or your system does not support it. Page mode is not recommended.

Additional support

The Signalist SC1 is a very complex product, and therefore not every aspect of its operation can be covered in this manual. If you need any support on things covered in this manual or for things that have not been covered interactive support is available on the Signalist web site where you will find a link to the Signalist support forum:-

<http://signalist.co.uk/>

Signalist SC1 Issue 2 user manual Rev 6

© Paul Harman 2013 all rights reserved