

Quick Start Guide

16-CH NVR

1. Install Hard Drive & DVD Writer

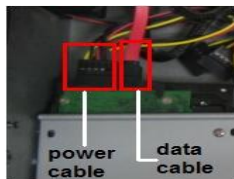
1.1 Install Hard Drive

Note: This series supports eight SATA HDDs. Please select the hard drive as per the manufacturer's recommendation. Refer to 'Appendix C Compatible Devices'.

Step 1: Unscrew and open the case and then unscrew the screws in the both sides to take out of the upper iron bar as shown below:



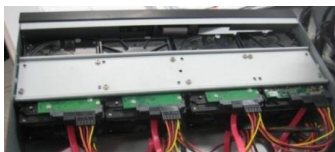
Step 2: Put the HDD under the lower iron bar and let the screw holes of the HDD aim at the iron bars'. Then screw firmly and connect the power and data cables. The pictures are shown as follows:



Step 3: Install other three HDD according to above-mentioned method. Then cover the upper iron bar and screw it firmly. Put the HDD under it and screw firmly as shown below:



Step 4: Install other three HDD under the upper iron bar as shown below:



Step 5: Cover the back cover of the device and screw firmly.

1.2 Install DVD Writer

Note: If the you install a DVD, you can only install 4 HDD disks. Because too much room has been taken up.

Step 1: Unscrew and open the case and then unscrew the screws in the both

16-CH NVR Quick Start Guide

sides to take out of the upper iron bar as shown below:



Step 2: Unscrew the four screws in the back of the front panel as shown below and then take out of the brace with a triangular mark.



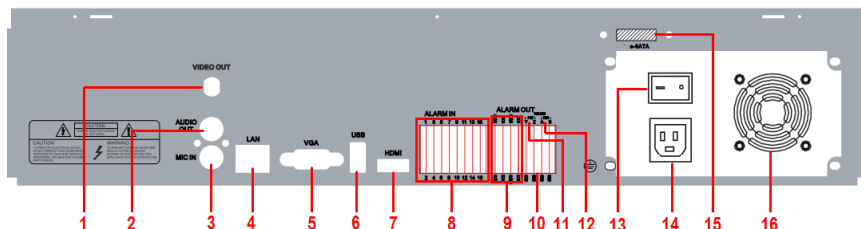
Step 3: Install the DVD holder attached with the device. Please let the screw holes of the DVD aim at the holder's. Try to place the holder farther away from the front and then screw firmly. Then, put the DVD with the holder into the case and let the screw holes of the case aim at the holder's. Next, screw them firmly.



Step 4: Connect the power and data cables and install the upper iron bar. Then, screw firmly with screws in the both sides.



2. Rear Panel Instruction



Item	Name	Description
1	Video out	Video output. Connect to monitor.
2	Audio out	Audio output, connect to the sound box
3	MIC IN	Connect to microphone
4	LAN	Network port
5	VGA port	VGA output, connect to monitor
6	USB port	To connect external USB devices like USB flash drive, USB HDD for backup or updating firmware.
7	HDMI port	Connect to high-definition display device
8	Alarm in	Alarm Inputs for connecting sensors
9	Alarm Out	Relay Output. Connect to external alarm.
10	GND	Grounding
11	P/Z	Connect to speed dome (unavailable)
12	K/B	Connect to Keyboard, K is TX+, B is TX-
13	Power Switch	Turn on/off the power supply.
14	Power Input	AC 110V-220V
15	E-SATA	Connect to E-SATA x 1
16	Fan	For cooling the device

3. Startup & Shutdown

3.1 Startup

Step 1: Connect to monitor.

Step 2: Connect with the source power.

Step 3: The device will boot and the power indicator will display blue.

Step 4: A WIZZARD window will pop up.

3.2 Shutdown


You can shut down the device by using IR remote controller and mouse.

By IR remote controller:

Step 1: Press Power button. This will take you to see a Shutdown window. The unit will shut down by clicking "OK" button.

Step 2: Disconnect the power.

By mouse:

Step 1: Enter into  Menu and select "Shut Down" icon. Then this will bring up a shutdown window.

Step 2: Click OK. Then the unit will power off after a while.

Step 3: Disconnect the power.

4. Setup Wizard

- After the device starts, a setup wizard pops up. You can set up time, network and disk management.

The WIZARD window displays the following configuration options:

Device Name	EDVR
Language	English
Date Format	MM-DD-YY
Time Format	24 Hour
Time Zone	GMT
System Date	03 / 24 / 2012
System Time	16 : 40 : 49
Startup Wizard	<input checked="" type="checkbox"/>

Buttons: Prev, Next, Exit

Click Device name box to popup a keyboard as follows:

A virtual keyboard interface with the following layout:

1	2	3	4	5	6	7	8	9	0	Backspace
q	w	e	r	t	y	u	i	o	p	[] \
a	s	d	f	g	h	j	k	l	;	' Enter
Shift	z	x	c	v	b	n	m	,	.	/ -
Esc										=

It supports digits, alphabets and symbols as inputs. Click Shift button to input Capital letters and symbols; click Shift button again to return.

- Click 'Next' button to bring up a network setup window.

The WIZARD window displays the following network configuration options:

HTTP Port	80
Server Port	6036
Obtain an IP address automatically	<input checked="" type="checkbox"/>
IP Address	192.168.011.061
Subnet Mask	000.000.000.000
Gateway	192.168.011.001
Preferred DNS Server	192.168.011.001
Alternate DNS Server	000.000.000.000

Buttons: Prev, Next, Exit

The default HTTP port is 80. The default server port is 6036. You can check 'Obtain an IP address automatically' to acquire network information or input IP address, subnet mask, gateway, preferred/alternate DNS server manually. This function is used to monitor NVR through internet (See Section 10 for details).

- Click 'Next' button. This will take you to the HDD management window.

The WIZARD window displays the HDD management table:

ID	Type	Size[GB]	Free[GB]	Status	Properties	Sources
01	IDE	0.00	0.00	Normal	Read & Write	Local

Buttons: Refresh, Format, Prev, Next, Exit

You can check your HDD information through this tab. If your HDD was recently installed, select the HDD from the list to format it.

- Click 'Next' button. This will let you see your NVR status. And then Click 'Finish' button to end this wizard.

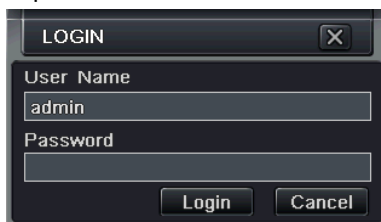
You can also refer to the complete setup steps from the relevant sections of NVR User Manual. If you don't want to setup Wizard, please click Exit button to exit.

5. Login

After you exit the wizard setup, you can login to the NVR.

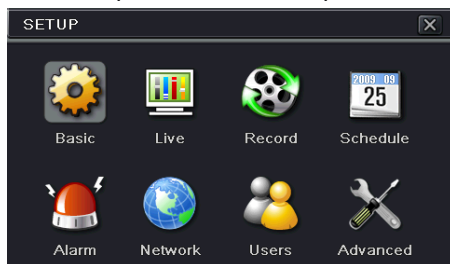
Notice: This NVR can only display options on either VGA monitor or BNC monitor at a given point of time, if there is live image display without menu options, please check if there is display on other device/monitor, or long press Exit key to wait for login dialog box to appear. Long press Exit key can switch the output between BNC and VGA/HDMI.

Press the MENU button which will bring the LOGIN dialogue box and enter the user name: admin and password: 123456.



6. Main Menu Setup

Click right mouse, or press ENTER button on the front panel to enter into the main menu. Then click Setup to enter into Setup interface as shown below.



Basic configuration: Users can set video system, menu language, audio, time and authorization check.

Live configuration: Users can set name/time display, picture color and hide cameras.

Record configuration: Users can set record quality, frame rate, resolution, time stamp and recycle.

Schedule configuration: Users can set schedule for timer, motion detection, and sensor alarm respectively.

Alarm configuration: Users can set sensor type, alarm trigger and buzzer alarm.

Network configuration: Users enable network function, and configure IP address, DDNS, transmission video parameters here.

User configuration: Administrator can add, delete users, and change their authorization

Advanced configuration: Users can reboot the device and import & export data into or from mobile storage medium.

7. Setup Network & Add IP Cameras

In order to preview the live images from NVR, you must set up the network of NVR first and then add IP cameras. The NVR should be connected to a LAN/WAN or Internet.

7.1 On LAN

Step 1: Set up the network of NVR. Enter into Menu→Setup→Network tab as shown below. Input HTTP Port (the default value is 80), Server port(the default value is 6036), IP address, Subnet, Gateway. If using DHCP, please enable DHCP in both the NVR and the router.

NETWORK	
Network Email Other Settings	
HTTP Port	80
Server Port	6036
Obtain an IP address automatically	<input checked="" type="checkbox"/>
IP Address	192.168.0.11.061
Subnet Mask	000.000.000.000
Gateway	192.168.0.11.001
Preferred DNS Server	192.168.0.11.001
Alternate DNS Server	000.000.000.000
PPPoE	<input type="checkbox"/>
User Name	
Password	
Test	
Default Apply Exit	

Step 2: Click "Test" button to test the effectiveness of the network. After that,

16-CH NVR Quick Start Guide

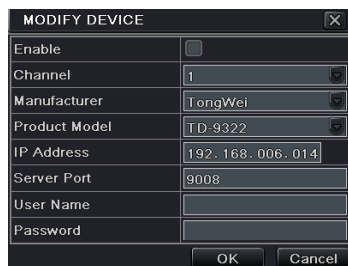
click "Apply" to save settings.

Step 3: Enter into Menu→IP Cameras tab as shown below. Click "Search" button to search the devices in the same network segment.



Click "Refresh" button to refresh the searched devices. Check the device you want to add and then click "OK" button to return to the previous tab. The added devices will be listed.

Step 4: Select the device and click "Setup" button to bring up the following window.



Step 5: Check "Enable" checkbox, select channel and input the username and password of the device (see the User Manual of IP Camera for details). Then click "OK" button to return to the previous tab.

Step 6: Click "Apply" button to save settings. Then exit the configuration tab. This will take you to see the live images.

Note: The IP address of NVR and IP Cameras must be in the same network segment.

7.2 On WAN

Step 1: Set up the network of NVR. Enter into Menu→Setup→Network tab as shown below. Input IP address, Subnet Mask, etc. If using DHCP, please enable DHCP in both the NVR and router. Or Enable PPPoE and then input user name and password received from your ISP.

Network Email Other Settings	
HTTP Port	80
Server Port	6036
Obtain an IP address automatically	<input type="checkbox"/>
IP Address	192.168.002.061
Subnet Mask	000.000.000.000
Gateway	192.168.002.001
Preferred DNS Server	192.168.000.001
Alternate DNS Server	000.000.000.000
PPPoE	<input checked="" type="checkbox"/>
User Name	admin
Password	*****
<input type="button" value="Test"/>	
<input type="button" value="Default"/> <input type="button" value="Apply"/> <input type="button" value="Exit"/>	

Step 2: Click "Test" button to test the effectiveness of the network. After that, click "Apply" to save settings.

Step 3: Enter into Menu→IP Cameras tab. Click "Add" button to add IP cameras.

Step 4: Check "Enable" checkbox, select channel, manufacturer, product model and input IP address, server port, username and password of the device (see the User Manual of IP Camera for details). Then click "OK" button to return to the previous tab. Here the IP address must be a WAN IP address. If it is a LAN IP address, please forward the IP address and server port in the virtual server setup of the IP cameras' router or virtual server.

Note: IP address and port forwarding settings may be different in different routers. Please refer to the router's manual for details.

Step 5: Click "Apply" button to save settings. Then exit the configuration tab. This will take you to see the live images.

8. Recording Setup

A user needs to install and format a HDD, and set all the recording parameters before recording. There are four kinds of record modes.

8.1 Manual Recording

A user can press REC button on the front panel after quitting system setup. Press this button again to stop recording.

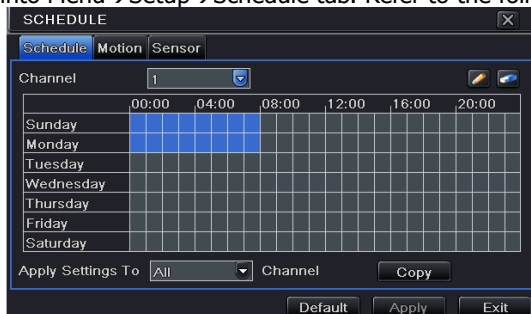
Or press REC button on remote controller. Click it again to stop.



Or click REC button on the tool bar with mouse. Click it again to stop.

8.2 Schedule Recording

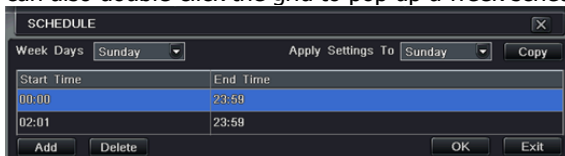
To Setup Schedule Recording:

Step1: Enter into Menu→Setup→Schedule tab. Refer to the following picture.



Step2: Click “” button to add a certain day schedule; click “” button to delete the selected schedule;

Step 3: You can also double-click the grid to pop up a week schedule window.



Select day and then click 'Add' button to setup the start time and end time. Then select other days and click 'Copy' button to save the setting to other days. Finally, click 'OK' button to save week schedule.

Step 4: Select other channels and set timeline for them or select 'Apply Settings To All Channel' and click "Copy" button to set the same settings for all channels.

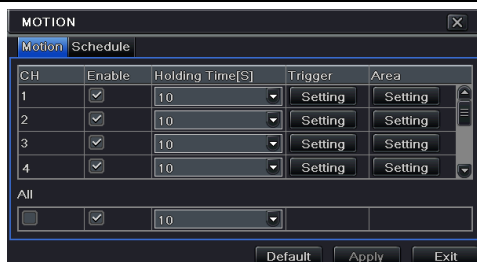
8.3 Motion Based Recording

Motion detection based recording: when there is a motion event detected, the camera will be triggered to record.

To Setup Motion Based Recording:

Step 1: Enter into Menu→Setup→Schedule→Motion tab. The setup steps for schedule for motion based recording are similar to normal schedule setup. You can refer to 8.2 Schedule Recording for details.

Step 2: Enter into Menu→Setup→Alarm→Motion→Motion tab as shown below.



Step 3: Enable motion alarm (Please specify to channel) and click 'Apply' to save settings.

Step 4: Click 'Setting' button under the Area to set Sensitivity and Detection area. Left click the grid and drag to delete the area. Drag again to add area. You can drag slide bar to set the sensitivity value (1-8). The higher the value is the more sensitive it is to motion. Since the sensitivity is influenced by color and time (day or night), you can adjust its value according to the practical conditions. Click icon to set the whole area as detection area. Click icon to clear the set detection area. Click icon to test the sensitivity as per the local conditions. Once motion is sensed, it displays a figure icon. Click icon to save the setting. Click icon to exit the current interface.



Step 5: Enter into Menu→Setup→Alarm→Motion→Schedule tab to bring up schedule settings for motion alarm. The setup steps are similar to normal schedule setup. You can refer to 8.2 Schedule Recording for details.

Note: The timelines of the two schedules must match, otherwise you cannot get the record in some time.

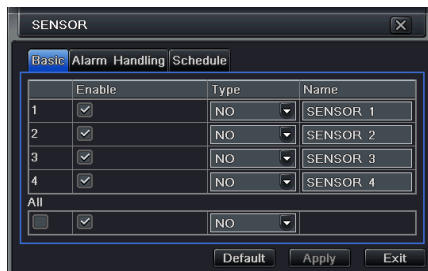
8.4 Sensor Based Recording

To Setup sensor Based Recording:

Step 1: Enter into Menu→Setup→Schedule→Sensor tab. The setup steps for schedule for sensor based recording are similar to normal schedule setup. You can refer to 8.2 Schedule Recording for details.

16-CH NVR Quick Start Guide

Step 2: Enter into Menu→Setup→Alarm→Sensor→Basic tab as shown below.
Step 3: Enable sensor alarm (Please specify to channel), select sensor type and click 'Apply' to save settings.




Step 4: Enter into Menu→Setup→Alarm→Sensor→Schedule tab to bring up schedule settings for sensor alarm. The setup steps are similar to normal schedule setup. You can refer to 8.2 Schedule Recording for details.

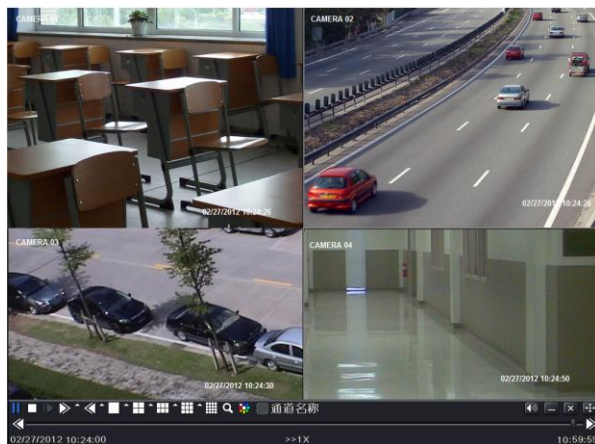
Note: The timelines of the two schedules must match, otherwise you cannot get the record in some time.

9. Playback

This unit supports three kinds of playback

9.1 Live Playback

Click Play  button on the main menu bar to playback the record. User can do concrete operation by click the buttons on screen.




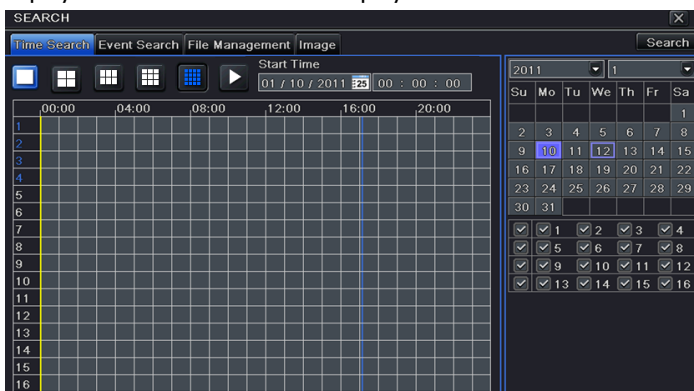
9.2 Playback by Time Search

Step 1: Enter into Menu→Search→Time Search tab.

Step 2: Select date and channels on the right hand side and press "Search" button. A date with highlighted borderline indicates presence of data.

Step 3: Set the start time by clicking a particular grid or by entering the specific value in the start time field.

Step 4: Select the channel display mode and click  button to play record. Use the playback toolbar to control the playback.



9.3 Playback by Event Search

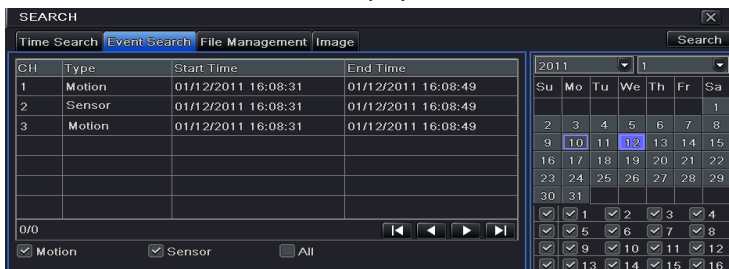
Step 1: Enter into Menu→Search→Event Search tab.

Step 2: Select date and channels on the right hand side. A data with highlighted borderline indicates presence of data.

Step 3: Then checkmark Motion, Sensor or All accordingly. You can search for motion based recording and sensor based recording.

Step 4: Press "Search" button to display the searched event information in the event list box.

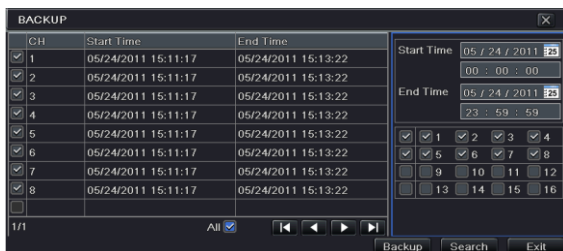
Step 5: Double click the event item to play the record.



10. Back up

This unit supports backup by USB flash, DVD writer and USB HDD.

Step 1: Enter into Menu→Backup tab.



Step 2: Set the start & end time, select channels and click Search button to display the searched data in the data backup list box

Step 3: Select a required file or checkmark "All" to select all data files. Click Backup button to pop up Backup information window.

Step 4: In the backup information interface, user can check the relevant options for backing up files. These options include storage Media, backup player and save file type. Then click Start button to start backup.

11. Remote Surveillance

In order to view the NVR from a network it must be connected to a LAN/WAN or internet. The network setup should be done accordingly.

11.1 Access NVR on LAN

- Enter into Menu → Information → Network tab to check the network settings of the NVR.
- Enter into Record Setup to set network video parameters like resolution, frame rate etc.
- Open IE on a computer on the same network segment. Input the IP address of the NVR in IE address bar and press enter. If HTTP port is not 80, add the port number after IP address.
- IE will download ActiveX component automatically. Enter the username and password in the subsequent window.

11.2 Access NVR on WAN

1. Connect the NVR to internet through router or virtual server

- Enter into Menu → Information → Network tab to check the network settings of the NVR.
- Forward IP address and port number in Virtual Server setup of the router or

virtual server. Configure the firewall to allow accessing the NVR.

- Open IE browser, input IP address, or dynamic domain name and enter. If HTTP port is not 80, add the port number after IP address.
- IE will download ActiveX automatically. Then a window pops up and asks for user name and password. Input name and password correctly, and enter to view.

2. Connect the NVR to Internet through PPPoE

- Enter into the NVR's Menu→Setup→Network interface to enable PPPoE and then input user name and password received from your ISP. Next, click 'Apply'. The NVR will connect to the server and would give a confirmation message.
- If users want to utilize dynamic domain name, please apply for a domain name in a DNS server supported by the NVR or router. Then add to the NVR or router.
- When accessing the remote interface of NVR, you can input WAN IP/domain name to access directly (user can enter into Main menu→Information→Network interface to check IP address). If HTTP port is not 80, add the port number after IP address. The browser will download Active X control
- The following steps are the same as the connection way above.