

Quick Guide

# Windows Mobile enrollment guide 4.7

---

This Quick Guide describes the installation steps for MobiDM on devices running a Windows Mobile operating system

## Index

<b>1. Welcome to MobiDM</b>	<b>2</b>
1.1. <i>Windows Mobile Pro and Standard</i>	2
<b>2. Installing Afaria on your Windows Mobile device</b>	<b>2</b>
2.1. <i>Installing the software</i>	3
<b>3. Security</b>	<b>6</b>
<b>4. Applications</b>	<b>6</b>

## 1. Welcome to MobiDM

You are about to connect your mobile device to MobiDM. To connect your device to the MobiDM server, some software – called Afaria – needs to be installed on your device. Your administrator may also have prepared some software for you and set a security level for your device. This software and the settings will be downloaded to your device after Afaria has been installed and the device connects to the server. Your administrator can set the desired security level of your device remotely. There are a total of 5 settings of which level 0 is the lowest and level 5 the highest. See Chapter 3 for more information.

Users who have been granted access to the user portal are able to see the security level that has been set for them. See the MobiDM user manual for more information.

This manual gives a step-by-step overview of the actions you will need to take to install Afaria on your device.

### 1.1. Windows Mobile *Pro* and *Standard*

There are two versions of Windows Mobile. If your device has a touchscreen it is likely to be a Windows Mobile Pro device. If not, it is most likely a Windows Mobile standard device.

Your administrator should have already set the correct operating system in MobiDM. If this is not the case you will be given the option to select the correct operating system for your device.

## 2. Installing Afaria on your Windows Mobile device

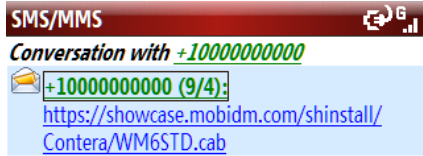
Your administrator has already sent you a username and password. You will need these credentials to install the software on your device. Your administrator will also send you a text message or e-mail containing a link to a URL to the location of the software. As soon as you have received this message you are ready to install Afaria.

If your administrator has also granted you access to the portal, you can send this message yourself using the tab ‘Device enrolment’ in the portal. For more information see the MobiDM user manual.

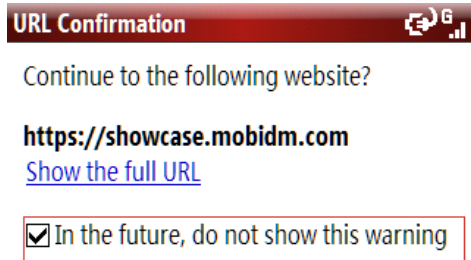
There are three steps required to install Afaria on your iPhone or iPad. First you will need to connect your device to the server. To do this a so-called “profile” is installed. Next you need to download and install the Afaria App. Finally, when Afaria has been installed it needs to be configured.

## 2.1. Installing the software

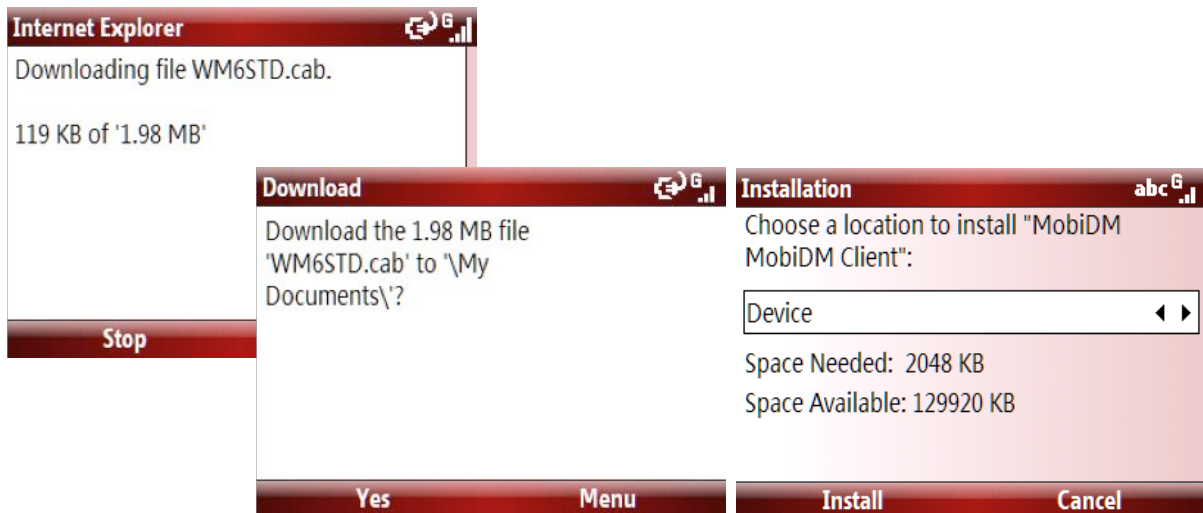
Open the text message or e-mail and click on the link. After clicking on the link the browser on your device will open the webpage for the software.



A conformation screen will open. Click 'Yes' to start downloading the software. Click 'Yes' to confirm you want to download the software.



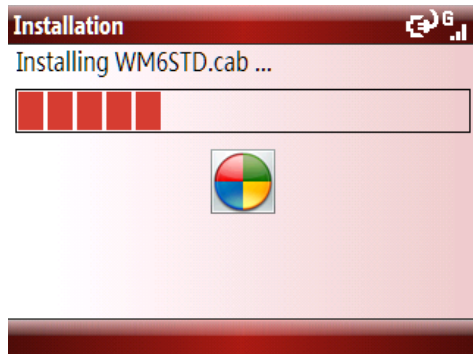
Following this action some or all of the following screens will appear, your device will notify you that it is connecting to MobiDM and the software is downloading. Depending on the type of device, the actual screens on your device may differ from the ones shown here. At this stage no actions are required.



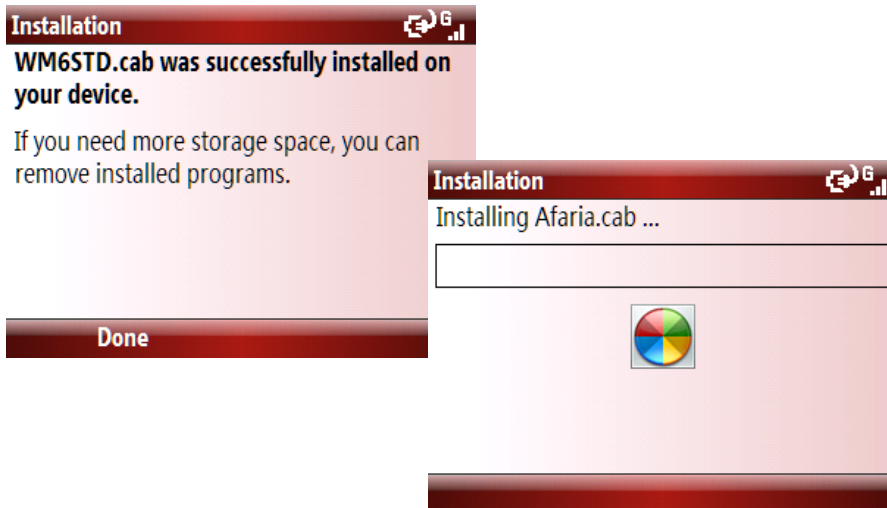
If this screen is shown, click on Yes to confirm installation. A cab file is downloaded and the applications will be installed on your device.

If your device contains a flash memory card you may be given the option to install the software on this card. Always select installation on the device itself.

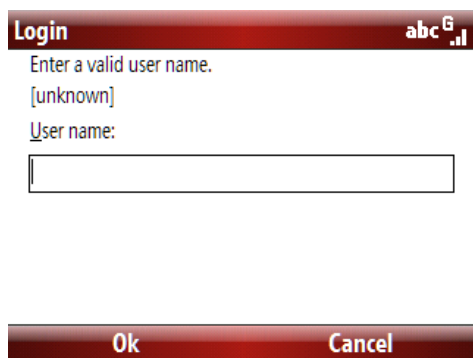
This next screen shows the progress of the installation procedure. No action is required.



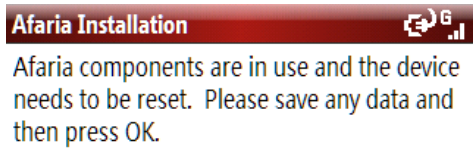
Once the installation is completed press 'Done' to continue installation of Afaria.



During this installation procedure you will need to enter your user name. Your administrator should have already provided you with this information.



Installation of Afaria is now nearing completion. Click OK to restart your device.



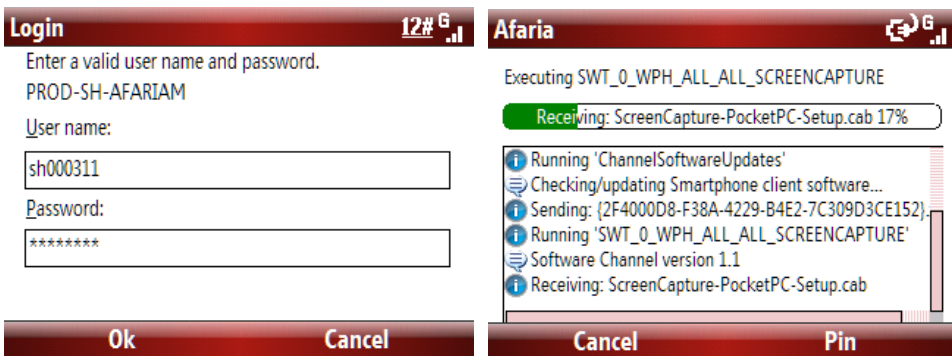
After your device has restarted, Afaria needs to connect to the MobiDM server. You can find the Afaria application in your program directory. Start it by clicking on the Afaria icon.



Once Afaria has started, choose the option Connect if connection has not already started. You may be asked to restart your device again.



When connection has been established, you will be asked to enter your password provided by your administrator. It may take a few moments before the screen requesting a password is shown. After you have entered your password and pressed OK, your device will start to synchronize with MobiDM and retrieve the necessary settings. After this the installation procedures are completed. There is no need to connect to the server manually again.



**Important:** It may take some time before the screen asking you to enter your password appears.

### 3. Security

If the administrator has set a security level, you will be asked to enter a new password when the device restarts. This may be a different password than the one you entered while installing Afaria. This password is required each time you restart the device or after it has been locked. Except for security level 0, your password will need to contain 4 to 8 characters. (See the table on the left.) Depending on the security level the password needs to be renewed every 60 or 90 days. You must wait at least five times before you can reuse an existing password.

**Policy overview**

*What is the difference between the policy levels?*

Every PDA has the ability to set a policy level from 1 to 5. Where 1 is the lowest and 5 the highest possible security level.

Level 0 indicates the PDA isn't secured anymore, this will uninstall the Security Manager, remove all security policies and decrypt all encrypted data.

	level 0	level 1	level 2	level 3	level 4	level 5
Minutes until the device locks itself	-	50	40	30	20	10
Number of Attempts to fill out the password	-	10	8	6	4	2
Number of days before the password needs to be changed	-	90	90	90	60	60
Number of recent passwords that can't be reused	-	5	5	5	5	5
Number of days that passwords can't be reused	-	0	90	90	90	90
Number of required unique numbers and letters	-	2	2	2	2	2
Minimum number of characters the password needs to have	-	4	4	8	8	8
Mail Encryption	-	x	x	x	x	x
PIM Encryption	-	x	x	x	x	x
Mail Attachment Encryption	-	-	-	-	x	x
Data encryption	-	-	AES256	AES256	AES256	AES256
Encryption "My Documents" for Windows Mobile, "Documents" for Symbian	-	-	-	-	x	x
Encryption "Storage card"	-	-	-	-	x	x

### 4. Applications

Your administrator can also provide applications for you to use. He can determine if such applications are automatically installed or if they require your permission first.