



Instruction Manual for
Reference Acoustic Fixed Frame Screens

EluneVision
A Division of Edith-Min International Inc.

Visit our website for updated product information
www.EluneVision.com

Thank you for purchasing a Reference Acoustic Fixed Frame projection screen. Before use, please read the instructions carefully. After installation, please store the instructions for future reference.

About Contents of Package

Your product should come with the items shown below. Contact immediately with your dealer if anything is missing. Keep the original packing materials for future reshipment.

Long frame (2 pcs)



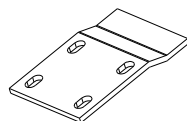
M5x40mm tapping screw with anchor (8 pcs)



Short frame (2 pcs)



Wall bracket (2 pcs)



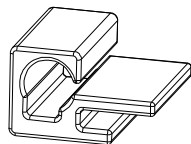
Tension Hook (some)



5mm horizontal tension rod (4 pcs)



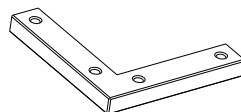
material tensioner



5mm vertical tension rod (4 pcs)



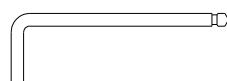
Corner joint connector (8 pcs)



M8x8mm corner connector screws (32 pcs)



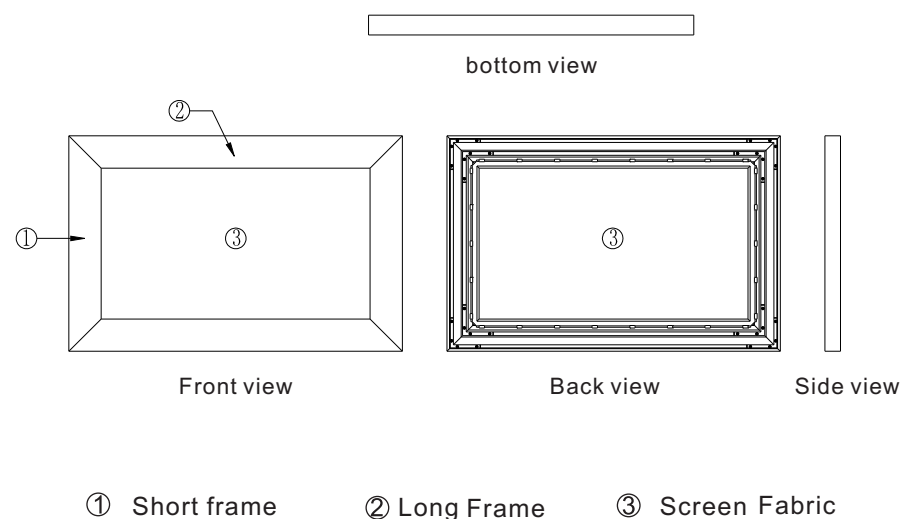
hexagon spanner (1 pcs)



Caution: Please follow these instructions carefully to ensure proper maintenance of your product.

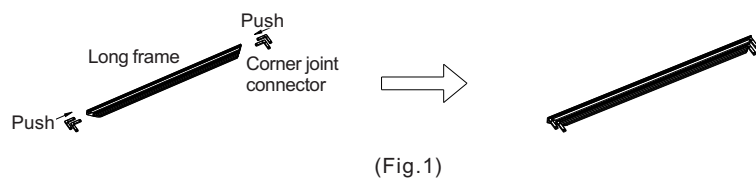
- 1、 When hanging the screen up, make sure no other objects like power switches occupy the space designated for your screen.
- 2、 Frame are made of high quality aluminum and should be handled carefully.
- 3、 When not using the fixed frame for a long period of time, cover the screen with a furniture sheet to protect it from dirt, grime, and paint
- 4、 Use a soft cloth with warm water to remove any marks on the frame or screen surface when cleaning.
- 5、 Never use solutions or chemicals cleaners on the screen surface.
- 6、 Avoid touching screen directly with your fingers, tools or other sharp objects.
- 7、 Spare parts should be placed out of children's reach. In accordance with household safety guidelines.

Illustration

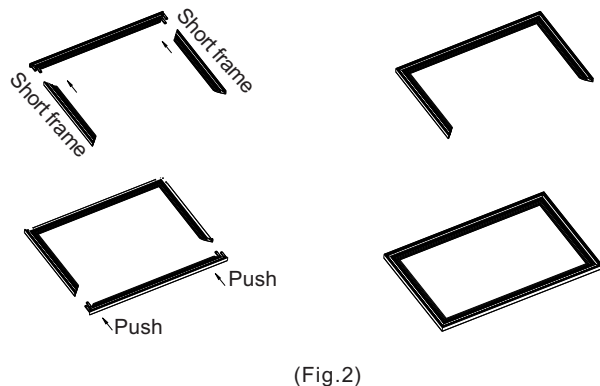


Installation Procedure

- (1) Insert corner joint connectors into the long (horizontal) frame. (see fig.1)

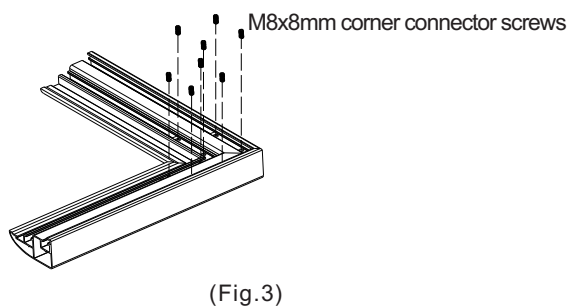


- (2) Join all four frame parts together. (fig.2)

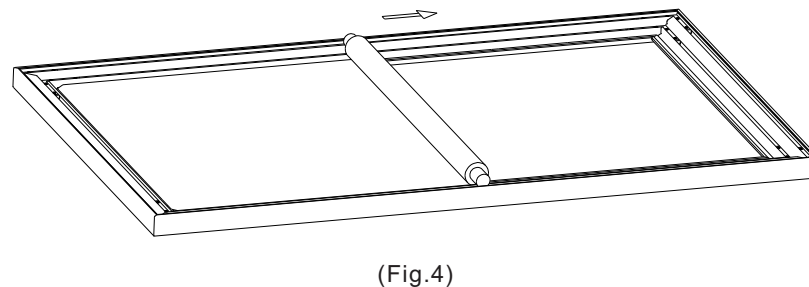


Insert the exposed ends of the joint connectors into the short (vertical) frame and align the four corners so that they meet at perfect 90 degree angles.

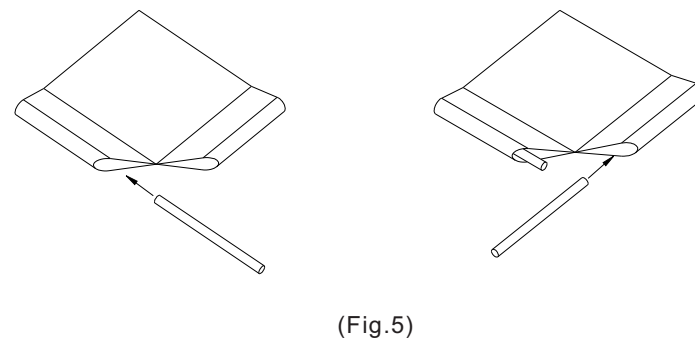
- (3) Fasten the four angles together by using the screws included. (See fig.3)



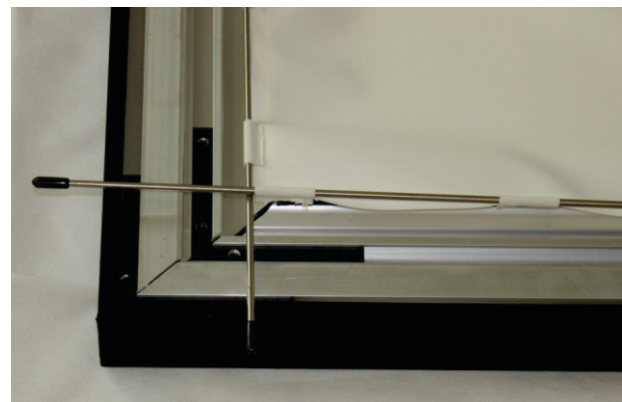
- (4) Put the whole frame upside down and unwrap the fabric (see fig.4).
(NOTE: Avoid scraping the fabric when unwrapping)

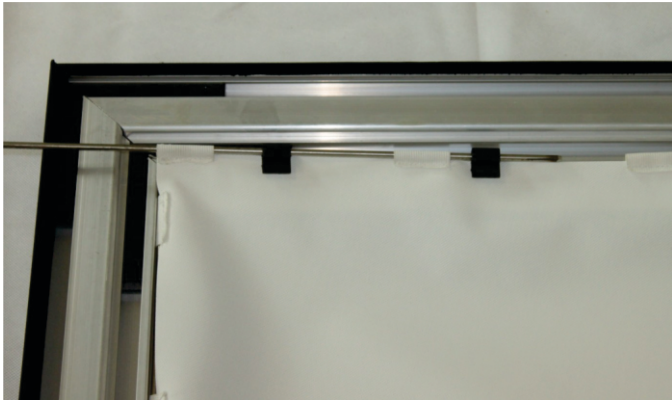


- (5) Push the screen tension rods gently through the sleeves according to their corresponding lengths on each edge of the screen. (See fig.5)



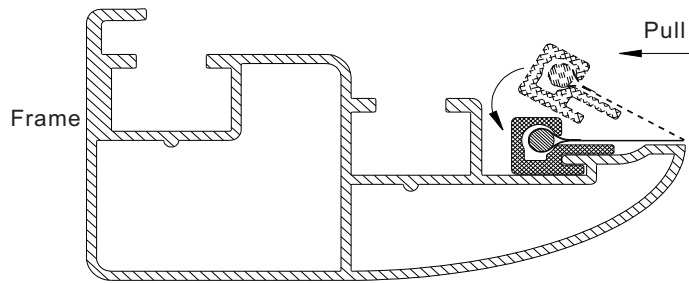
- (6) Slip the screen tension rods into the sleeves running along side of the screen material. At the same time as you are inserting the rods, make sure to slide at least one tensioner in between the sleeves. (see fig.6 & fig.7)





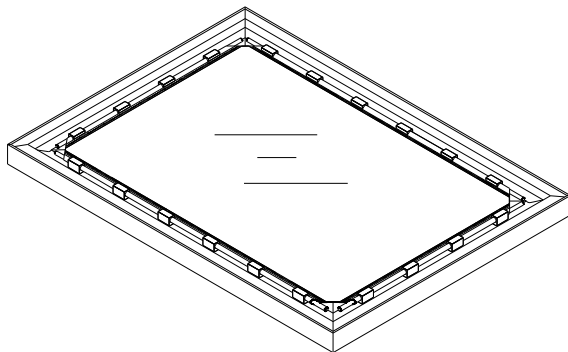
(Fig.7)

The average distance between the fix brackets is 200mm.



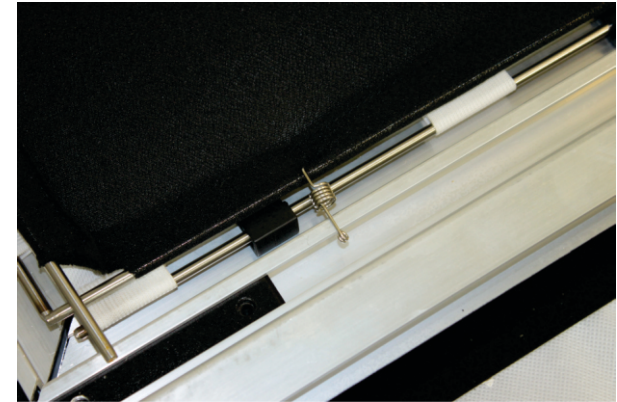
(Fig.8)

(7) Making a tight and flat surface after installing the fabric. (fig.9)



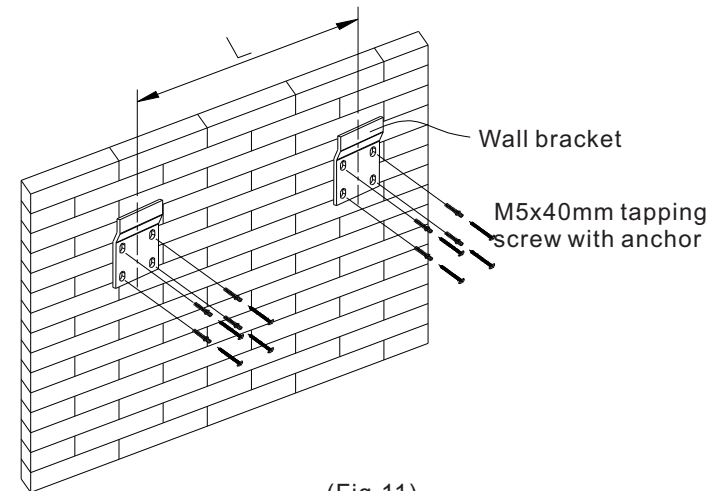
(Fig.9)

(8) Thread metal rods into each sleeve at corners of the black backing. Then fasten the tension rods by using tension hook. (Fig.10)



(Fig.10)

(9) Position the screen with the attached surface onto the wall bracket as showed (fig.11)



(Fig.11)

NOTE In the image above, L should be greater than half the length of the screen.