



INSTROTECH OVERVIEW CATALOGUE

2014



Our Sales Teams contact details are below

Internal Sales :

General :

Joyce Adams : joyce.adams@instrotech.co.za, tel : +27 (0) 11 462 1920

Technical

Nevash Jagarnath : nevash.jagarnath@instrotech.co.za, tel : +27 (0) 11 462 1920

Sales Consultants:

North West / Limpopo / Pretoria / Centurion / Northern Cape / Mpumalanga / Midrand

Pieter Hugo : pieter.hugo@instrotech.co.za, mobile : +27 (0) 82 409 8295

Kwa-Zulu Natal / Swaziland :

Giles Wilcox : giles.wilcox@instrotech.co.za, mobile : +27 (0) 72 967 6617

Sales Director :

Scott Hunter : scott.hunter@instrotech.co.za, mobile : +27 (0) 82 550 2558

The Benefit's to partnering with Instrotech (Pty) Ltd:

Experience:

Instrotech (Pty) Ltd (Instrotech) was formed in 1981 to create and supply high quality process control instrumentation and industrial electronics to address local and international market requirements. As part of our commitment to support and offer our customers a total solution, we:

- represent a number of leading international process control instrumentation manufacturers in South Africa, supported by an experienced sales and support team.
- locally design and develop technology comprising of panel meters, displays and transmitters as well as specialised products, including the INSPECTA FFT acoustic leak detection system for detecting tube leaks in coal fired utilities, oxygen plants and gasifiers and the Calog Calibrator range for troubleshooting and calibration in the process industry. These systems and products are sold all over the world.

With over thirty years of experience and an unrelenting focus on technology, performance, quality and good value, Instrotech has established itself as a trustworthy technology partner.

Quality:

Instrotech's range of high quality products are backed by a well trained, professional sales and technical support team who are focused on offering a comprehensive and friendly service to ensure our customer's needs are met and to guarantee them peace of mind throughout the purchasing process. All Instrotech's manufacturing and processing systems comply with ISO9001 standards.

Variety:

Instrotech offers a wide range of quality process control and automation instruments, not limited to any one particular technology. This gives the team at Instrotech the freedom to collaborate with their customers to meet their specific industry requirements and deliver solutions that are easy and quick to implement and deliver on the required results.

Index

Suppliers

Agency	Description	Page
Amprobe	Tacho Meters	15,
Calog	Panel Meters / Transmitters / Wireless	4, 5, 7, 8
Calog Calibrators	Calibrators	16
Calog by Instrotech	Panel Meters / Transmitters	4, 6, 7
Ebro	Data Loggers	25
Fluke	Calibrators	17
Keller	Pressure Transmitters / Gauges	17, 18
Kobold	Flow Meters / Level Sensors	18, 19, 20, 21, 22
Leitenberger	Pressure and Temperature Calibration	26, 27
MCB	Linear Pots	29
Monitran	Vibration Transmitters	28
Michell	Humidity / Temperature Transmitters	26
Optis	Infrared Temperature Sensors / Camera's	24, 25
Rototherm Canongate	Non Invasive Level / Density Transmitter	23, 24
Selet	Proximity Switches	28, 29
Senix	Ultrasonic Level Transmitters	15
Siko	Linear / Rotary Indicators / Sensors	12, 13, 14, 15
Vishay	Loadcells	8, 9, 10, 11

Products

Products	Page
Accelerometers	28
Acoustic Leak Detection	29
Bypass Level Indicators	22
Calibrators	16, 17, 26, 27
Counters	4, 5
Data Loggers	18, 25
Dead Weight Testers	26
Digital Indicators	4, 5, 6
Draw Wire Encoders	13
Extra Large Displays	6
Flow Counters	22
Flow Meters	19, 20, 21, 22
Flow Switches	20
Geared Potentiometer	14
Hydraulic Hand Pumps	26
Humidity Transmitters	26
Indicator Enclosures	5
Infrared Thermometers	24, 25
Infrared Camera's	24
Intrinsically Safe Calibrators	17
Loadcells	8, 9, 10, 11
Loadcell Transmitters	5, 6, 7
Linear Pots	29
Level Transmitters	15, 22, 23
Magnetic Length Measurement	13
Panel Meters	4, 5, 6, 7
Pressure Gauges	17, 18
Pressure Switches	18
Pressure Transmitters	17, 18, 19
Proximity Switches	28, 29
Pneumatic Hand Pumps	26
Position Indicators	14, 15
Ultrasonic Level Transmitters	15, 23
Radio Transmitters / Receivers	6
Rotary Encoders	12
Rotameters	19, 20
Temperature Selector Switches	5
Temperature Transmitters	6, 7
Thermocouples	30
Tube Leak Detection - Acoustic	29
Vibration Transmitters	28
Wireless Gateways	8



PANEL MOUNT INDICATORS

MODEL	DESCRIPTION
4001	4-digit process/counter/frequency indicator
5001	5 1/2-digit process/counter/frequency indicator
4015	4-digit dual input process indicator
5015	5 1/2-digit dual input process indicator
5016	Two by 3 digit process input indicator
5600	6-digit process indicator
8001	8-digit process/counter/frequency indicator
4006	4-digit high voltage/high current indicator
5001-T	5 1/2-digit process/count/freq with PROCESS TOTALISER/INTEGRATOR (4 - 20mA)
8001-T	8-digit process TOTALISER/INTEGRATOR (Rate display 5 1/2-digit) (4 - 20mA)
4003	4-digit universal temperature indicator, thermocouple/RTD Optional for Ni 100, Pt500 & Pt1000
4004	4-digit loadcell indicator/controller (Includes option 3010 and 3014)
5004	5 1/2-digit loadcell indicator/controller (Includes option 3010 and 3014)
5012	5 1/2-digit counter/frequency/rate/event timer/totaliser indicator
5012-C	5 1/2-digit counter/frequency/rate/event timer/totaliser CLOCK indicator
5012-Q	5 1/2-digit counter/frequency/rate/event timer/totaliser QUADRATURE indicator
5002	5 1/2-digit gray code/binary or 6 digit BCD indicator
4011	4-digit ASCII Bus protocol serial bus indicator
5011	5 1/2-digit ASCII Bus protocol serial bus indicator



DIMENSIONS: 48 x 96mm

PANEL CUTOUT: 45 x 92mm

DEPTH: 140mm

OPTIONS FOR ABOVE PANEL MOUNT INDICATORS

OPTIONS	
3000	Lineariser /squareroot/log/S-curve/16 point
3001P/M	Dual setpoints/alarms (Photomos / electromechanical)
3002	RS-485 output
3003	0/4-20mA/0-10Vdc retransmission -(Analogue output)
3004P/M	1 setpoint/alarm (Photomos / electromechanical)
3006	Fully isolated V or I output (add to 3003, 3002, 3013)
3008	Galvanic isolated dc power supply (10 to 30 Vdc)
3009	Parallel BCD output (Cannot be used with 3017/3018)
3010	Switch mode power supply (95 to 265Vac/dc)
3011	Ohms tap input
3012	Peak hold (0.5 Seconds)
3013	RS-232 output
3014	Auto zero/tare
3017P/M	3 setpoints/alarms (Photomos / electromechanical)
3018P/M	4 setpoints/alarms (Photomos / electromechanical)
3019	Green display
3020	AlGaAs ultra bright display
3021	Mains frequency (50.00 Hz)4001 add
3022	Bar graph display (Vertical)
3024	Auto manual station (include 3003)
3025	Key pad lock
3026	Display hold
3028	Non-isolated dc power supply (10-30V) not 4/5004
3029	Time and date stamp
3030	Low voltage ac frequency input



PANEL MOUNT INDICATORS

MODEL	DESCRIPTION
CALOGBAR	Bar graph process controller (0/4-20mA or 0-2/10V)
CALOGLCD	5 1/2 digit LCD, 4-20mA loop powered display
CALOG216-LCD	6 digit backlit LCD, 4-20mA loop powered display
CALOG106B-WEI	6 digit loadcell batching controller (4/6 wire strain gauge, 1-5mV/V)
CALOG106-CTR	6 digit counter/rate indicator (NPN, PNP, TTL, namur, tacho, closed contact)
CALOG106-FLO	6 digit flow rate dual totalizer (NPN, PNP, TTL, namur, tacho, closed contact)
CALOG106-PRO	6 digit process controller (0/4-20mA or 0-2/10V)

NEW



CALOGLCD

PANEL MOUNT QUAD CHANNEL CONTROLLERS/INDICATORS

MODEL	DESCRIPTION
CALOG106Q-CTR	6 digit quad counter/rate batching controller (1x, 2x, 4x, NPN, PNP, TTL)
CALOG106Q-PRO	6 digit quad process controller (4 x 0/4-20mA)
CALOG106Q-RTD	6 digit quad RTD controller (4 x RTD Pt100, 385/392/Cn10)
CALOG106Q-TC	6 digit quad thermocouple controller (4 x thermocouple J, K, N, R or T type)

NEW



PANEL MOUNT DUAL DISPLAYS CONTROLLERS/INDICATORS

MODEL	DESCRIPTION
CALOGDUAL-CTR	Dual display counter/rate batching controller (Quad (x1, x2, x4), NPN, PNP, TTL)
CALOGDUAL-DEW	Dual display humidity/temperature controller (Wet & dry bulbs, RTD 385/392, Pt100)
CALOGDUAL-FLO	Dual display flow batching totalizer (NPN, PNP, TTL, namur, tacho, closed contact)

NEW



OPTIONS FOR ABOVE PANEL MOUNT INDICATORS

-HV	85-265Vac / 95-370Vdc
-LV	15-48Vac / 10-72Vdc
-R2	2 x relay outputs
-R4	4 x relay outputs
-A	1 x mA/V analogue output
-S2R	1 x RS-232 serial (RJ11)
-S4S	1 x RS-485 serial (screw)

INDICATOR ENCLOSURES

MODEL	DESCRIPTION
ACC04	Table top for one Calog DPM
ACC05	Table top for two Calog DPMs
ACC06	IP65 wall mount enclosure for one Calog DPM + pcb
ACC07	Table top for one Calog DPM + nicads + charger



ACC06

TEMPERATURE SELECTOR SWITCHES

MODEL	DESCRIPTION
SW-4	Temperature switch 4-way 3-pole PT100/TC
SW-6	Temperature switch 6-way 2-pole PT100/TC
SW-12	Temperature switch 12-way 1-pole TC only



REMOTE AND EXTRA LARGE DISPLAYS

MODEL	DESCRIPTION
Remote 7 segment display, polycarbonate housing : 225 x 162 x 65mm	
7544	5 digit ASCII bus/DIG Bus, 45mm display
7454	4 digit ASCII bus/DIG Bus, 57mm display
IP65 metal housing : 500 x 200 x 120mm	
1304	3 digit 125mm LED ASCII bus/DIG Bus
1404	4 digit 125mm LED ASCII bus/DIG Bus
IP65 metal housing : 600 x 300 x 120mm	
2304	3 digit 125mm LED ASCII bus/DIG Bus
2404	4 digit 125mm LED ASCII bus/DIG Bus
2504	5 digit 125mm LED ASCII bus/DIG Bus
IP65 metal housing : 800 x 300 x 120mm	
2604	6 digit 125mm LED ASCII bus/DIG Bus



7454



2504

RADIO TRANSMITTERS / RECEIVERS

MODEL	DESCRIPTION
RAD100	Wireless data transmission from panel mount indicator to large display
	RS-232 and RS-485 available, 8-30 Vdc supply, license free
	Operation in 2.4 GHz band

TWO WIRE PROCESS TRANSMITTERS

MODEL	DESCRIPTION
9300	Dual setput transmitter unit (Change over contacts)
9500	Two-wire transmitter, inputs - potentiometer/Volts/mA
9600-1	Single input loop isolator 0-32 mA/0-32 mA
9600-2	Dual input loop isolator 0-32 mA/0-32 mA



FIELD MOUNT LOADCELL TRANSMITTERS

MODEL	DESCRIPTION
6004LC	Loadcell transmitter with 6 digit LED display and 4-line LCD, analogue output, USB and SD card supplied standard
6004BW	Beltweigher transmitter with 6 digit LED display and 4-line LCD, analogue output, USB, SD card, PI control and six relays supplied as standard.
6004MF	Multi-function weighing controller, 6 digit LED display and 4-line LCD analogue output, USB, SD card, PI control and six relays supplied as standard.
Options	
3001MF	Dual relay
3002MF	RS-485 communication
3013MF	RS-232 communication
3018MF	Four relay
3030MF	Six relay

NEW



6004MF APPLICATIONS

Loadcell Transmitter,
Batch Controller,
Bagfiller,
Loss-in-Weight Controller,
Dyno-Meter,
Through-Put Weigher.

PROGRAMMABLE HEAD MOUNT TEMPERATURE TRANSMITTERS

MODEL	DESCRIPTION
CALOGTW-HMT	2-Wire RTD transmitter (head mount, loop powered, non-isolated)
CALOGTW-HMT-ISO	2-Wire RTD/TC transmitter (head mount, loop powered, isolated)

NEW



PROGRAMMABLE DIN RAIL PROCESS TRANSMITTERS

MODEL	DESCRIPTION
CALOG9000	Programmable process transmitter, isolated supply/input/output Switch mode supply: 95-265Vac/dc, inputs: mV, V, mA, J, K, N, S, R, T, W5, PT100, frequency, output: 4 -20mA or 0-10 Vdc, RS-232 communication standard
CALOG9240	As above with 24Vdc supply(Isolated)
CALOG9004	Loadcell transmitter, isolated supply/input/output Switch mode supply: 95-265Vac/dc, input: maximum of 4 loadcells Output: 4-20 mA or 0-10 Vdc, RS-232 communication standard
CALOG9244	As above with 24Vdc supply (isolated)
CALOG9006	High current/voltage transmitter, isolated supply/input/output Switch mode supply: 95-265Vac/dc, Input: maximum 5A ac or 400 Vac Output: 4-20mA or 0-10Vdc, RS-232 communication standard

NEW



OPTIONS FOR ABOVE PROGRAMMABLE DIN RAIL PROCESS TRANSMITTERS

OPTIONS	
-3001PD	Dual alarm option (Photomos SPNO)
-3002PD	RS-485 communication (Replaces RS 232)
-3004PD	Single alarm option (Photomos SPNO)

*All units set via RS-232 port. Software and cable supplied at no extra charge on request.

PROGRAMMABLE DIN RAIL PROCESS CONTROLLERS

MODEL	DESCRIPTION
CALOGDR-CTR	DIN rail counter/rate controller (Quad (x1, x2, x4), NPN, PNP, TTL)
CALOGDR-DEW	DIN rail mount humidity/temperature controller (Wet & dry bulbs, RTD 385/392, Pt100)
CALOGDR-FLO	DIN rail mount flow rate totalizer (NPN, PNP, TTL, namur, tacho, closed contact)
CALOGDR-PRO	DIN rail mount process controller (0/4-20mA)
CALOGDR-RTD	DIN rail mount temperature controller (RTD Pt100/ Pt1000, 385/392/120/Cn10)
CALOGDR-TC	DIN rail mount temperature controller (Thermocouple B, J, K, N, R, S or T Type)
CALOGDR-UAR	DIN rail mount universal ac controller (0-5A ac or 0-300Vac)
CALOGDR-WEI	DIN rail mount loadcell batching controller (4/6 Wire Strain Gauge, 1-5mV/V)

NEW



OPTIONS FOR ABOVE PROGRAMMABLE DIN RAIL PROCESS TRANSMITTERS

OPTIONS	
-HV	85-265Vac / 95-370Vdc
-LV	15-48Vac / 10-72Vdc
-A	1 x mA/V analogue output
-S2R	1 x RS-232 serial (RJ11)
-S4S	1 x RS-485 serial (screw)

ISOLATED UNIVERSAL TRANSMITTERS

MODEL	DESCRIPTION
CALOGTW2-ISO	2-Wire universal transmitter (DIN mount, loop powered, isolated)
CALOGTW4-ISO	4-Wire universal transmitter (DIN mount, user powered, isolated)

NEW



TW SERIES USB PROGRAMMING KIT

MODEL	DESCRIPTION
CALOGTW-USB	USB programmer, head mount adaptor, transmitter/programmer interface cable and USB extension cable
CALOGTW-SOFT	Calog TW programming software

NEW



CALOGTW-USB

WIRELESS GATEWAYS

MODEL	DESCRIPTION
CALOGWL-PTH-ZS2	Wireless pathfinder selectable base/node (2 x RS-232, RS-422 / 485)
CALOGWL-PTH-ZE	Wireless pathfinder selectable base/node (1 x ethernet Modbus / RTU)
CALOGWL-SLB	Wireless sleeper node, battery powered, non-routing
CALOGWL-SLR	Wireless sleeper unit, user powered, routing
CALOGWL-OPT -IO	Digital IO: (2 x relay outputs, 4 x digital inputs and 2 x digital outputs) (WL-PTH only)

NEW



MULTI CHANNEL CONTROL STATION

MODEL	DESCRIPTION
CALOGMCS-16-ETH	Monitoring and control station - 16 universal isolated inputs 2 analogue outputs, 4 digital inputs, 2 relays 2 serial ports (Port 1 = ethernet, port 2 = RS-485 / 232)
CALOGMCS-16-RS	Monitoring and control station - 16 universal isolated inputs 2 analogue outputs, 4 digital inputs, 2 relays 2 serial ports (Port 1 = RS-485 / 422, port 2 = RS-485 / 232)

NEW



OPTIONS FOR MULTI CHANNEL CONTROL STATION

MODEL	DESCRIPTION
-RTC	Data logging (30 000 samples) with real time clock
-RTC-SD	Data logging (30 000 samples) with real time clock and micro SD slot
CALOG-MCS-RIO	I/O expansions 16 x rely output, 16 digital input
CALOGMCS-XVI-C	Configurator software
CALOGMCS-XVI-D	Data viewer software v(Requires CALOGTW-USB kit)

LOAD CELL JUNCTION BOXES

MODEL	DESCRIPTION
JB3	Junction box for 3 loadcells
JB4	Junction box for 4 loadcells



WWW.INSTROTECH.CO.ZA

UNIVERSAL S TYPE LOAD CELLS

MODEL	DESCRIPTION
LC9363-xx	Stainless steel (IP67) Capacity : 50kg, 100kg, 250kg, 500kg, 1000kg, 2500kg, 5000kg, 7500kg, 10 000kg. Class : C3
LC363-xx	Nickel plated (IP65) Capacity : 50kg, 100kg, 250kg, 500kg, 1000kg, 2500kg, 5000kg. Class : C3



APPLICATIONS

Force Measurement
Suspended Hoppers

RING TORSION LOAD CELL

MODEL	DESCRIPTION
LCRLC-xx	Stainless steel, hermetically sealed (IP68), low profile, ring torsion construction Capacity : 0.25t, 0.5t, 1.0t, 2.0t, 3.5t, 5.0t, 10.0t, 28.0t Class : C3



Available



ACCESSORIES

MNTRLC-003	RLC mounting assemblies for 0.5ton to 5ton, material: stainless steel 304
MNTRLC-002	RLC mounting assemblies for 10ton, material: stainless steel 304
LCRLCFT-001	Self aligning foot for 0.25ton to 1ton
LCRLCFT-002	Self aligning foot for 2ton to 5ton
LCRLCFT-006	Self aligning foot for 10ton (height adjustable)

APPLICATIONS

Silo
Hopper
Tank Weighing
Beltweigher

SINGLE ENDED BEAM LOAD CELLS

MODEL	DESCRIPTION
LCSHBXR-xx	Stainless steel, hermetically sealed (IP68), Capacity : 5kg, 10kg, 20kg, 50kg, 100kg, 200kg, 350kg Class : C3



Available



ACCESSORIES

MNTSHBxR-002	20 to 350kg mounting kit stainless steel, Including base, mounting bolts and flanges
MNTSHBxR-001	20 to 350kg mounting kit 3CR12, Including base, mounting bolts and flanges

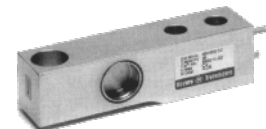
APPLICATIONS

Platform Scales
Packaging Machines
Silo and Hopper
Weighing

LCACB-xx	Stainless steel, hermetically sealed (IP68), low profile construction Capacity : 0.5t, 1.00t, 2.00t, 5.00t Class : C3
----------	---

ACCESSORIES

MNTACB-001	0.5 ton to 2 ton and 5ton SS mounting kit
MNTACB-003	0.5 ton to 2 ton and 5ton 3CR12 mounting kit
LCACBFT-001	Stainless steel alignment foot for 0.25ton to 2ton
LCACBFT-002	Stainless steel alignment foot for 0.25ton to 5ton



APPLICATIONS

Platform Scales
Silo and Hopper
Weighing

LCSSB-xx	Stainless steel, hermetically sealed (IP68) Capacity : 0.5t, 1.0t, 2.0t, 5.0t, 10.0t, Class : C3
----------	--



Available



ACCESSORIES

LCMNTSSB-004	0.5 ton to 2ton mounting kit, including base, mounting bolts and flanges SS
LCMNTSSB-005	5ton mounting kit, including base, mounting bolts and flanges SS
LCMNTSSB-001	0.5ton to 2ton mounting kit, including base, Mounting bolts and flanges 3CR12
LCMNTSSB-003	5ton mounting kit, including base, mounting bolts and flanges 3CR12

APPLICATIONS

Platform Scales
Pulley Scales
Overhead Track Scales
Silo and Hopper
Weighing

EXTENSOMETER - BOLT ON STRAIN GAUGE

MODEL	DESCRIPTION
LC178	Alloy steel construction, hermetically sealed (IP66)

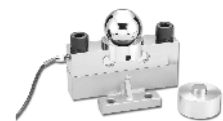


APPLICATIONS

Force Measurement on any load bearing structure.
Level Monitoring

MINIATURE DOUBLE ENDED BEAM LOAD CELL

MODEL	DESCRIPTION
LCMDB-xx	Nickel plated alloy steel, hermetically sealed (IP65)
	Capacity : 10t, 20t, 25t, 30t, 40t, 50t
	Class : C3
	Mounting assembly included



APPLICATIONS

Track and Rail Scales
Silo, Hopper and Tank Weighing

DOUBLE ENDED SHEAR BEAM LOAD CELLS

MODEL	DESCRIPTION
LC5103-xx	Nickel plated alloy steel, hermetically sealed (IP67), low profile construction
	Capacity : 5k, 10k, 20k, 30k, 40k, 50k, 60k, 100k, 150k, 200k, 250k
	Class : D3
LC9103-xx	Stainless steel, hermetically sealed (IP67), low profile construction
	Capacity : 5k, 10k, 20k, 30k, 40k, 50k, 60k, 100k, 150k, 200k, 250k
	Class : D3

Available



APPLICATIONS

Platform Scales
Weighbridges
Silo and Hopper Weighing

ACCESSORIES

LCMNT5103-001	5103 Mounting kit stainless steel 304
LCMNT5103-002	5103 Mounting kit 3CR12

COMPRESSION LOAD CELLS

MODEL	DESCRIPTION
LCCSPM-xx	Stainless steel, hermetically sealed (IP68), low profile, multi column construction
	Capacity : 10t, 25t, 40t, 60t, 100t
	Class : C3

Available



APPLICATIONS

Weighbridges
Silo and Hopper Weighing

ACCESSORIES

LCMNTCSPM-001	10 ton to 25 ton mounting kit stainless steel
LCMNTCSPM-007	40 ton to 60 ton mounting kit stainless steel
LCMNTCSPM-002	10 ton to 25 ton mounting kit 3CR12
LCMNTCSPM-006	40 ton to 60 ton mounting kit 3CR12

COMPRESSION LOAD CELLS (LOW COST)

MODEL	DESCRIPTION
LCASC2-xx	Stainless steel, hermetically sealed (IP68), self aligning, single column construction
	Capacity : 30t, 40t, 50t
	Class : C3, C6 (0.012% accuracy)

ACCESSORIES

LCMNTASC2-xx	Self aligning mount for truck scales, rail scales and process weighing applications
--------------	---



APPLICATIONS

Weighbridges
Silo and Hopper Weighing

COMPRESSION LOAD CELLS - HIGH CAPACITIES

MODEL	DESCRIPTION
LCKSR-xx	Stainless steel, sealed diaphragm (IP66), low profile, single column construction
	Capacity : 6t, 13t, 28t, 60t, 130t, 280t
	Class : R1



APPLICATIONS

Vessel Weighing
High Capacity Platform Scales

DIGITAL COMPRESSION LOAD CELLS

MODEL	DESCRIPTION
LCSCC-xx	Stainless steel, hermetically sealed (IP68), low profile, multi column construction
	RS-485/422 full duplex, asynchronous serial transmission
	Capacity : 10t, 25t, 40t, 60t, 100t
	Class : C3,

ACCESSORIES

LCMNTSCC-001	10 ton to 25 ton mounting kit stainless steel
LCMNTSCC-002	40 ton to 60 ton mounting kit stainless steel
LCMNTSCC-003	10 ton to 25 ton mounting kit 3CR12
LCMNTSCC-004	40 ton to 60 ton mounting kit 3CR12



APPLICATIONS

Weighbridges
Silo and Hopper Weighing

DIGITAL BEAM LOAD CELLS

MODEL	DESCRIPTION
LCSBC-xx	Stainless steel, hermetically sealed (IP68),
	RS-485/422 full duplex, asynchronous serial transmission
	Capacity : 0.5t, 1t, 2t, 5t, 10t
	Class : C3,



ACCESSORIES

LCMNTSBC-001	0.5 to 2 ton mounting kit, incl base, mounting bolts and flanges SS
LCMNTSBC-002	5 to 10 ton mounting kit, incl base, mounting bolts and flanges SS
LCMNTSBC-003	0.5 to 2 ton mounting kit, incl base, mounting bolts and flanges 3CR12
LCMNTSBC-004	5 to 10 ton mounting kit, incl base, mounting bolts and flanges 3CR12

APPLICATIONS

Platform Scales
Pallet Scales
Overhead Track Scales
Silo and Hopper Weighing

SHAFT ENCODERS - LIGHT DUTY PLASTIC (220 IMP/REV MAX)

MODEL	DESCRIPTION
SIKIG06-AXX-xx	Hollow shaft encoder, single channel
SIKIG06-ABX-xx	Hollow shaft encoder, dual channel
SIKIG06-ABO-xx	Hollow shaft encoder, dual channel and zero ref.
SIKIG16-AXX-xx	Solid shaft encoder, single channel
SIKIG16-ABX-xx	Solid shaft encoder, dual channel
SIKIG16-ABO-xx	Solid shaft encoder, dual channel and zero ref.



ACCESSORIES

SIKIG06-M2-xx	M2 mounting flange
SIKIG06-HR-xx	Bearings for high REVS, (15mm hollow shaft)

SHAFT ENCODERS - HEAVY DUTY ALUMINIUM (1024 IMP/REV MAX)

MODEL	DESCRIPTION
SIKIG07-AXX-xx	Hollow shaft encoder, single channel
SIKIG07-ABX-xx	Hollow shaft encoder, dual channel
SIKIG07-ABO-xx	Hollow shaft encoder, dual channel and zero ref.
SIKIG17-AXX-xx	Solid shaft encoder, single channel
SIKIG17-ABX-xx	Solid shaft encoder, dual channel
SIKIG17-ABO-xx	Solid shaft encoder, dual channel and zero ref.



ACCESSORIES

SIKIG07-M4-xx	M4 mounting flange
SIKIG17-MR01	Measuring wheel

SHAFT ENCODERS - ROTA MAG - MAGNETIC DISK SHAFT ENCODERS

MODEL	DESCRIPTION
SIKIG07M-xx	Hollow shaft ROTA MAG encoder
SIKIV58M-xx	Solid shaft ROTA MAG encoder



SHAFT ENCODERS - ABSOLUTE ANALOGUE ENCODERS

MODEL	DESCRIPTION
SIKAV58M-xx	Programmable solid shaft, analogue output, multi turn
SIKAH36M-M-xx	Programmable hollow shaft, analogue output, multi turn
SIKAH36M-S-xx	Programmable hollow shaft, analogue output, single turn



SHAFT ENCODERS - ABSOLUTE/PROFIBUS SHAFT ENCODERS

MODEL	DESCRIPTION
SIKWK02/1-xx	Hollow shaft single turn
SIKWK50/1-xx	Hollow shaft multi turn



MAGSCALE ELECTRONIC RULER

MODEL	DESCRIPTION
SIKMA508/4/3/1-xx	Panel mount design, internal and external sensors available, sensor cable length maximum 2m
SIKMB500-xx	Magnetic tape (per meter)



INDUSTRIAL DRAW WIRE TRANSDUCERS

MODEL	DESCRIPTION
SIKSGP/1-POT-xx	1000 up to 6000mm potentiometer output
SIKSGP/1-MWI-xx	1000 up to 6000mm 4-20 mA output
SIKSG60-IV58M-xx	1000 up to 6000mm incremental encoder output
SIKSG60-WV58M-xx	1000 up to 6000mm absolute encoder output
SIKSG120-IV58M-xx	3000 up to 12000mm incremental encoder output
SIKSG120-WV58M-xx	3000 up to 12000mm absolute encoder output



Cable Replacement for SGP/1 and SG60

SIKSGP/1-CABLE-xx	1000 up to 6000mm Stainless Cable and Mounting Plate
-------------------	--

MINIATURE DRAW WIRE TRANSDUCERS

MODEL	DESCRIPTION
SIKSG5-xx	600mm Potentiometer Output
SIKSG5-MWI-xx	600mm 4-20 mA Output
SIKSG10-POT-xx	500/1000mm Potentiometer Output
SIKSG10-MWI-xx	500/1000mm 4-20 mA Output
SIKSG10-IV28M/1-xx	2000mm Incremental Encoder Output



MAGNETIC LENGTH MEASUREMENT - 1mm ACCURACY

MODEL	DESCRIPTION
	MAGLine Length Measurement, Supply: 24 Vdc Output: PP/AB, Resolution: 1.0mm
SIKMSK400/1	Magnetic Sensor
SIKMB400-xx	Magnetic Tape (per meter)



MAGNETIC LENGTH MEASUREMENT - 10um ACCURACY

MODEL	DESCRIPTION
	MAGLine length measurement, supply: 24Vdc / 110Vac / 220Vac Resolution: 0.001mm with display
SIKMS100/1	Magnetic sensor
SIKMB100-xx	Magnetic tape (per meter)
SIKMA100/2-xx	Display



MAGNETIC LENGTH MEASUREMENT - 50um ACCURACY

MODEL	DESCRIPTION
	MAGLine length measurement, supply: 5Vdc / 12-30Vdc Output: PP/TTL/LD/ABI/ABR, resolution: 0.025mm
SIKMSK210-xx	Magnetic sensor
SIKMB200-xx	Magnetic tape (per meter)



INCLINOMETER

MODEL	DESCRIPTION
SIKIK360	Single-axis absolute inclinometer 0° to 360°
	Biaxial absolute inclinometer -80° to + 80°
	Accuracy : 0.1°
	Resolution : 0.01°
	IP69K protection, RS-232+U, RS-232+I; CANopen interfaces.

NEW



GEARED POTENTIOMETERS - LIGHT DUTY RATIOS 0.25 TO 550:1

MODEL	DESCRIPTION
SIKGP03/1-POT-xx	Potentiometer output, solid shaft
SIKGP03/1-MWI-xx	4-20 mA output, solid shaft
SIKGP43-POT-xx	Potentiometer output with three CAM switches, solid shaft
SIKGP43-MWI-xx	4-20 mA output with three CAM switches, solid shaft



GEARED POTENTIOMETERS - HEAVY DUTY RATIOS 0.25 TO 550:1

MODEL	DESCRIPTION
SIKGP04/1-POT-xx	Potentiometer output
SIKGP04/1-MWI-xx	4-20 mA output
SIKGP44-POT-xx	Potentiometer output with three CAM switches.
SIKGP44-MWI-xx	4-20 mA output with three CAM switches
All the above are available in solid and hollow shaft	



COMPACT GEARED POTENTIOMETERS - IP52

MODEL	DESCRIPTION
SIKGP09-POT-xx	Potentiometer output
SIKGP09-MWI-xx	4-20 mA output
All the above are available with optional IP68 protection	



POSITION INDICATORS

MODEL	DESCRIPTION
SIKDA04-xx	High impact polamide housing, hollow shaft, 4 digit display,
SIKDA09S-xx	Plastic dust proof housing, hollow shaft, 5 digit display



POSITION INDICATORS - LCD DISPLAY (PC PROGRAMMABLE)

MODEL	DESCRIPTION
SIKDE04-xx	Plastic housing, hollow shaft, 5 digit LCD display.
SIKDE10-xx	Glass fiber reinforced plastic, hollow shaft, 5 digit LCD display,
SIKDE-PRO-TOOL	Programming software



ANALOGUE POSITION INDICATORS

MODEL	DESCRIPTION
SIKS50/1	Scale 51.7mm, reinforced plastic housing either dust-tight, oil-filled or waterproof, scale and pointer
SIKS70/1	Scale 66.8 mm, reinforced plastic housing either dust-tight, oil-filled or waterproof, scale and pointer
SIKS80/1	Scale 86.8 mm, reinforced plastic housing either dust-tight, oil-filled or waterproof, scale and pointer
SIKS120/1	Scale 124.2 mm, reinforced plastic housing either dust-tight, oil-filled or waterproof, scale and pointer
SIKSZ80/1	Scale 86.8 mm, reinforced plastic housing either dust-tight, oil-filled or waterproof, scale and pointer and 5 decade counter

All the above are available with hand wheels on request

NEW



SIKS70/1



SIKSZ80/1

www.siko.de

ULTRASONIC DISTANCE / LEVEL MEASUREMENT (PC PROGRAMMABLE)

MODEL	DESCRIPTION
TSPC	Waterproof, dual output, push button teachable and PC configurable Level/distance transmitter, 15-30Vdc, IP68 Outputs : Programmable mA/V/PNP or NPN awitch/RS-232/RS-485
TSPC-30S1-xx	Serial RS-232 / 485 interface, range : 120mm up to 4m
TSPC-15S1-xx	Serial RS-232 / 485 interface, range : 254 up to 9m
TSPC-21S1-xx	Serial RS-232 / 485 interface, range : 305mm up to 15m
SENIXVIEW	RS-232 programing software kit
SENIXVIEW-USB	USB programing software kit



CHEMICALLY RESISTANT ULTRASONIC LEVEL SWITCH / TRANSMITTER

MODEL	DESCRIPTION
LVL	Chemically resistant, waterproof, dual outputs, PC configurable level transmitter Outputs : Programmable mA / V / PNP or NPN switch / RS-232 / RS-485
LVL-100-xx	Serial RS-232 / 485 interface, max range 3m
LVL-300-xx	Serial RS-232 / 485 interface, max range 6m
LVL-500-xx	Serial RS-232 / 485 interface, max range 10m
SENIXVIEW	RS-232 programing software kit
SENIXVIEW-USB	USB programing software kit



www.senix.com

DIGITAL TACHOMETER

MODEL	DESCRIPTION
TACH20	Hand held digital tachometer, ideal for beltweigher speed measurement Measurement of rotational and surface speed in m/min, ft/min and in/min Measurement of length in m, ft and inch Display last, maximum and minimum value Optical (Non-contact) or mechanical measurement



mA LOOP CALIBRATOR

MODEL	DESCRIPTION
CALOG-LOOP II	Measure, source or simulate mA, including Tx Exc
	Measure volts and continuity, datalogging via SD card and USB port
	Comes standard with li-ion batteries, trend display



TEMPERATURE CALIBRATOR

MODEL	DESCRIPTION
CALOG-TEMP	Measure or source RTD / TC / mV / ohms / mA
	Simultaneous mA measure and sourcing of RTD, TC, mV or ohms
	Datalogging via SD card and USB port, includes Tx Exc
	Comes standard with li-ion batteries, trend display



LOADCELL CALIBRATORS

MODEL	DESCRIPTION
CALOG-LC II	Full loadcell tester / simulator / insulation tester (50Vdc)
	Measure mA / volts / mV / zero balance, source mA
	Comes standard with li-ion batteries
	Loadcell Display for handheld weight indication
	Datalogging via SD card and USB port



PRESSURE CALIBRATOR

MODEL	DESCRIPTION
CALOG-PRESS II	Pressure calibrator that includes a pressure Tx
	Measure, source or simulate mA, Including Tx Exc
	Measure volts and continuity. Trend display, measure pressure using digital transmitter, datalogging via sd card and usb port, comes standard with li-ion batteries
	Additional sensors (Keller series PA-33X)
	Sensor ranges: -1 to 1bar, 0 to 1bar, 0 to 3bar, 0 to 10bar, 0 to 30bar, 0 to 100bar, 0 to 300bar



LOADCELL DISPLAY UNIT

MODEL	DESCRIPTION
CALOG-LCDISPLAY	Handheld weight indication
	Comes standard with li-ion batteries
	Datalogging via SD card and USB port



MULTI FUNCTION PROCESS CALIBRATOR

MODEL	DESCRIPTION
FLUKE725	Measure V / mA / RTD / TC / frequency, Source/simulate V / mA / TC / RTD / frequency
	Split display for simultaneous measure and source
	Includes test leads, test clips and user manual on CD-rom



INTRINSICALLY SAFE MULTI FUNCTION PROCESS CALIBRATOR

MODEL	DESCRIPTION
FLUKE725Ex	Measure V / mA / RTD / TC / frequency Source/simulate V / mA / TC / RTD / frequency
	Split display for simultaneous measure and source
	Includes test leads, test clips and user manual on CD-rom



www.fluke.com

PRESSURE TRANSMITTER - LOW COST

MODEL	DESCRIPTION
21Y-xxx	Ranges from 1 bar to 1000 bar, includes MPM plug Output of 4-20mA, G1/4" male connection



PRESSURE TRANSMITTER - LOW RANGE

MODEL	DESCRIPTION
41X-xxx	Ranges from 10 mbar up to 1000 mbar, includes binder plug Output of 4-20 mA, G1/4" male connection Gauge pressure or differential pressure



PRESSURE TRANSMITTERS - DIGITAL HIGH ACCURACY

MODEL	DESCRIPTION
33X-xxx	High accuracy digital and analogue output transmitter, Ranges from 1 bar up to 300 bar
35X-xxx	Outputs of 4-20 mA and RS-485 33x : connection G1/4" male, 35X : connection G1/4" flush diaphragm Absolute zero vacuum or gauge pressure versions available



PRESSURE GAUGE - DIGITAL DATA LOGGING

MODEL	DESCRIPTION
LEO-RECORD - xxx	Digital data logging pressure gauge, connection of G1/4" male Ranges -1 to 1000 bar Intrinsically safe version, protective rubber boot and K104-A cable with Windows programmable software available on request at a charge

 Available



PRESSURE GAUGE - DIGITAL WITH SWITCH OUTPUT

MODEL	DESCRIPTION
dV2-PS - xxx	Digital pressure gauge with two switch outputs, connection of G1/4" male Ranges -1 to 700 bar, Protective rubber boot and K104-A cable with Windows software available on request at a charge





PRESSURE GAUGE - DIGITAL

MODEL	DESCRIPTION
LEO2 / 3 - xxx	Digital pressure display, connection of G1/4" male
	Ranges -1 to 700 bar, accuracy of 0.1%
	Intrinsically safe version and protective rubber boot available on request
	LEO 3 has a 4-20 mA loop output



SUBMERSIBLE DATA LOGGER / TRANSMITTER

MODEL	DESCRIPTION
DCX22- xxx	Data logger with cable and software
	Ranges 1 bar up to 100 bar
GSM-2- xxx	Submersible Data level transmitter, battery powered
	Data transmitted via e-mail or SMS
	Includes logger, transmitter (36x) and software



PRESSURE TRANSMITTER - SUBMERSIBLE

MODEL	DESCRIPTION
26Y- xxx	Piezoresistive level transmitter,
	5m Cable Standard, alternative lengths available
	Ranges 0.2 up to 10 bar



PRESSURE TRANSMITTER - SUBMERSIBLE

MODEL	DESCRIPTION
46X- xxx	Capacitive low pressure level transmitter
	5m Cable Standard, alternative lengths available
	Ranges 30 up to 300mbar
	Intrinsically safe version available on request



DIGITAL DIFFERENTIAL PRESSURE TRANSMITTERS - LOW COST

MODEL	DESCRIPTION
PRD33X- xxx	High overload resistance and line Pressure output
	Pressure Ranges : 0 to 350mbar diff., 40 bar abs.
	0 to 1 bar diff., 40bar abs.
	0 to 3 bar diff., 40bar abs.
	Accuracy: ± 0,05 %FS
	Output : RS-485. (High accuracy digital)



NEW

www.keller-druck.ch

ELECTRONIC PRESSURE SWITCH / TRANSMITTER

MODEL	DESCRIPTION
PDD-xx	LED digital display or LED trend display
	Material : Stainless steel
	Range : -1 to 400 bar
	Output : PNP (NO / NC)
PDA-xx	LED digital display or LED trend display
	Material : Stainless steel
	Range : -1 to 400 bar
	Output : 4-20 mA



www.kobold.com

WWW.INSTROTECH.CO.ZA

DIFFERENTIAL PRESSURE TRANSMITTER

MODEL	DESCRIPTION
PAD-xx	Material : Stainless steel / monel / tantalum / hastelloy
	Range : +0.0075 to 41370 kPa
	Connection : 1/4, 1/2 "NPT
	Output : 4-20 mA, pulse, HART protocol

NEW



MASS FLOW METER - CORIOLIS

MODEL	DESCRIPTION
TME/UMC-3	Material : Stainless steel
	Range : 0-60 kg/h to 0-60 000 kg/h
	Maximum temperature / pressure : 180°C / PN40
	Connections : Flange DN10 to 80 / ANSI 1/2" to 3"
	Output : Various fieldbus options
TMU/UMC-3	Material : Stainless steel
	Range : 0-60 kg/h to 0-2 200 000 kg/h
	Maximum temperature / pressure : 260°C / PN40
	Connections : Flange DN10 to 300 / ANSI 1/2" to 12"
	Output : Various fieldbus options



VARIABLE AREA FLOW METERS

MODEL	DESCRIPTION
URK	Material : Stainless steel
	Range : water : 1 - 10l/h to 15 000 - 50 000l/h
	air : 0.02 - 0.2Nm ³ /h to 50 - 500Nm ³ /h
	Maximum temperature / pressure : 100°C / 20bar
	Connections : Flange DN15 to 80 / ANSI 1/2" to 3"
	Accuracy : Cl. 4 according to VDI
UTS	Material : Brass
	Range : 10 - 100NI/h to 0.3 - 3Nm ³ /h
	Maximum temperature / pressure : 55°C / 3bar
	Connections : M18 x 1.5, axial special connection
	Accuracy : Cl. 4 according to VDI



ROTAMETERS / FLOW METERS

MODEL	DESCRIPTION
KFR-xxx	Rotameters for liquid and gases
	Range : Water : 5 to 75 l/min
	Air : 0.05 up to 6000 l/min
	Connections : 1/8" NPT to 1"NPT female thread
KSM-xxx	Rotameters for liquid and gases, with optional reed contact outputs
	Range : Water : 15 to 760 000 l/h
	Air : 0.8 up to 2500 m ³ n/Hl/min
	Connections : G1/2", G1 1/4", G1 1/2", "G2", G21/2", Screw and glue fittings



VISCOSITY COMPENSATED FLOW METERS

MODEL	DESCRIPTION
VKG-xxx	Material : Stainless steel / brass
	Range : 0.1-0.45 l/min to 5-80 l/min oil
	Maximum temperature / pressure : 100°C / 12 bar
	Connections : G1/4" to 1, 1/4 to 1NPT
	Output : Reed contact / analogue



CALORIMETRIC FLOW METERS / SWITCHES

MODEL	DESCRIPTION
KAL-K-xxx	Calorimetric flow meter, output PNP/NPN switch, IP65, plastic housing
	Range : 4 cm/s to 200 cm/s
KAL-A-xxx	Calorimetric flow meter, Output 4-20 mA, IP65
	Range : 4 cm/s to 200 cm/s
KAL-D-xxx	Calorimetric flow meter, output PNP/NPN switch, IP65, stainless steel
	Housing,
	Range : 0.04 m/s to 2 cm/s



ROTATING VANE FLOW METERS

MODEL	DESCRIPTION
DPL-xxx	Material : Polypropylene material
	Range : 0.02-0.5 to 1-25 l/min
	Maximum temperature / pressure : 70°C / 10 bar
	Connections : G1/2" male, hose connector
	Output: Pulse, 4-20 mA



ROTATING VANE FLOW METERS

MODEL	DESCRIPTION
DRG-xxx	Material : Polypropylene / aluminum bronze / stainless steel
	Range : 0.5-12 to 10-140 l/min
	Maximum temperature / pressure : 80°C / 40 bar
	Connections : G1/8", 1/4", 1/2", 3/4", 1" female thread
	1/8", 1/4", 1/2", 3/4", 1" NPT female thread
	Output: Pulse, 4-20 mA, LED display, pointer indication



ROTATING VANE FLOW METERS

MODEL	DESCRIPTION
DRB-xxx	Material : Aluminium bronze / stainless steel
	Range : 5-30 to 50-750 l/min
	Maximum temperature / pressure : 80°C / 16 bar
	Connections : G1/2" to G3 female thread, 1/2"NPT to 3" NPT
	Output: Pulse, 4-20mA, LED display, contacts



FLOW SWITCH

MODEL	DESCRIPTION
PPS-xxx	Paddle type flow switch with adjustable paddle
	Range 18 - 36 / 72 - 108 l/min water
	Connection G1"
	Output reed contact (NO/NC)



ELECTROMAGNETIC FLOW METER - INSERTION

MODEL	DESCRIPTION
PIT-xxx	Material : Stainless steel (PTFE or PFA lining)
	Range : 0 to 10 m/sec water
	Maximum temperature / pressure : 150°C / PN40
	Connections : Flange DN40 to 80, ANSI 2" to 3"
	Output : Relay / Analogue / Pulse / Digital display



ELECTROMAGNETIC FLOW METER - INLINE

MODEL	DESCRIPTION
DMH-xxx	Lining material : Hard or soft rubber / waguinit / PTFE
	Range : 0-1 m³/hr to 0-10 177 m³/hr water
	Maximum temperature / pressure : 150°C / PN40
	Connections : Flange DN10 to 600, ANSI 1/2" to 24"
	Output : Pulse / analogue / status display / totalizer / hart



VORTEX FLOW METER

MODEL	DESCRIPTION
DVH-xxx	Material : Stainless steel / mild steel / hastelloy
	Range : 3-28 m³N/hr to 549-9 034 m³N/hr air
	0.2-5 m³/hr to 549-9 034 m³/hr liquid
	Maximum Temperature / Pressure : 400°C / PN64
	Flange DN10 to 300 / ANSI 1/2" to 12"
	Output : Analogue / contacts / digital display



MASS FLOW METER - THERMAL

MODEL	DESCRIPTION
DMW-xxx	Material : Stainless steel / aluminum
	Range : 5-100 mLN/min to 380-7 500LN/min air
	Maximum temperature / pressure : 50°C / 10 bar
	Connections : G1/4 to 1 female thread
	Output : Analogue / digital display / totalizer



OSCILLATION FLOW METER

MODEL	DESCRIPTION
DOG	Material : cast steel, steel, stainless steel
	Connections : flange DN25 to 400
	Maximum temperature / pressure : 120°C / PN40 bar
	Output : Pulse, analogue digital display for flow measurement and counter
DOG-1-xxx	Range : 0.2-20 to 160-16.000 m³/h air
	Accuracy: +/- 1.5 % of measured value (air)
DOG-2-xx	Range: 0.075-3.75 to 70 - 3500 m³/h water
	Accuracy: +/- 0,5 % of measured value (water)

NEW



KOBDOG-1

LEVEL SWITCH

MODEL	DESCRIPTION
NKP-xxx	Plastic universal level switch, output NO/NC contact
	Maximum pressure / temperature : 10bar / 100°C
	Connections : G1/2", 1/2" M16 NPT
	Output : Analogue / contact



MASS FLOW METER - THERMAL (FOR COMPRESSED AIR AND GAS)

MODEL	DESCRIPTION
KMT-xxx	Material : Stainless steel / Ball valve brass
	Measuring ranges : 0.32-0.65 Nm ³ /h to 78-57840 Nm ³ /h air
	Maximum temperature / pressure : 80°C / 16 bar
	Connection : G1/2 to G2 with ball valve / 1/2 to 2NPT with ball valve
	R1/2 screw-in version for DN65 to DN300
	Output : 2 x analogue / switch / pulse programmable



FLOW METER AND COUNTER - FULL METAL VARIABLE AREA

MODEL	DESCRIPTION
BGN-xxx	Material : Stainless steel
	Range : 0.5-5L/h to 13 000-130 000L/h water
	0.015-0.15m ³ /h to 240-2 400m ³ /h air
	Maximum temperature / pressure : 350°C / PN40
	Connections : Flange DN15 to Dn150 / ANSI 3/4" to 6"
	Output : Contact / analogue / totalizer / hart / profibus pa
	ATEX certification available

Available



FLOW METERS - OVAL GEAR WHEEL (FOR VISCOUS LIQUIDS)

MODEL	DESCRIPTION
DZR-xxx	Material : Cast iron / stainless steel
	Range : 0.008-2 to 3-700 L/min oil
	Maximum temperature / pressure : 150°C / 400bar
	Connections : G3/8" to 1" female
	Output : Pulse
KZA-xxx	Material : Aluminum
	Range : 0.02-4 L/min to 1-20 0L/min
	Maximum temperature / pressure : 80°C / 160bar
	Connections : G1/4" to 1" female thread
	Output : Pulse



BYPASS LEVEL INDICATORS

MODEL	DESCRIPTION
NBK-xxx	Material : Stainless steel
	Range : Length : 6 meters max
	Maximum temperature / pressure : 100°C / PN16
	Connections : Flange DN15 to DN32 / ANSI 1/2" to 1 1/4"
	Output : Analogue / contact



GUIDED WAVE RADAR LEVEL TRANSMITTER (TDR)


MODEL	DESCRIPTION
NGM-xxx	Material : Aluminium alloy / stainless steel
	Measuring length: Max. 20 m
	Maximum temperature / pressure : +250°C / +40bar
	Connections : Various
	Output : 4 - 20mA, switching output PNP

Available



NEW

DENSITY / CONCENTRATION TRANSMITTER


MODEL	DESCRIPTION	
DENSICHECK	Density/concentration transmitter for inline monitoring.	 Available
	High accuracy, low maintenance liquid concentration monitoring of acids, solvents and alcohols	



APPLICATIONS

Whisky / brandy distilling
Acid, solvents and
Alcohol concentrations


NON INVASIVE LEVEL TRANSMITTERS

MODEL	DESCRIPTION	
VESSELCHECK-ST1	Non-Invasive tank level gauge, (up to 3m)	 Available
VESSELCHECK-ST1AD	Non-Invasive tank level gauge with ATEX sensor and processor/display (up to 3m)	
VESSELCHECK-ST2	Non-Invasive tank level measurement system for 2 tanks (up to 25m)	
VESSELCHECK-ST4	Non-Invasive tank level measurement system for 4 tanks without reference sensor (up to 25m)	
SPOTCHECK-1000	Non-Invasive point level detector for tanks and pipes	




VESSELCHECK-ST1AD


CONTROLLER / ANALYSER - BEER ANALYSER FOR % ALCOHOL / °PLATO, CO2 AND O2

MODEL	DESCRIPTION	
MULTICHECK	One system measures all, low maintenance	
	Measuring ranges : 0 to 20% alcohol by volume	
	Plato : 0 to 30° Plato	
	CO2 : 0 to 20g/l; 0 to 10vol/vol CO2	
	O2 : 4ppb to 25ppm O2	
	Operating Temperature : 0 to 30°C	
	Analogue output : 8 x 4-20mA	

OXYGEN IN-LINE MEASUREMENT

MODEL	DESCRIPTION	
OXYCHECK	Resolution of 0.1ppb, low maintenance, suitable for stream CIP	
	Accuracy : level <80ppb accuracy = ±4ppb	
	Level <1680ppb accuracy = ±16ppb	
	Level <4000ppb = ±40ppb	
	Measuring Range : 0 to 25ppm	
	Repeatability : +/- 0.1ppb	
	Analogue outputs : 4 - 20mA (current sink) user scaleable	

NON-SAMPLING, IN-LINE CO2 MEASUREMENT

MODEL	DESCRIPTION	
CARBOCHECK	Accurate monitoring and control of dissolved CO2 levels in carbonated beverages	
	Improved "right first time" carbonation figures in-line or in tank	
	More efficient process control	
	Reduction in re-work	
	Accuracy : +/-0.02 vol/vol (+/-0.04 g/l)	

MECHANICAL CHART RECORDER FOR FLOW, PRESSURE & TEMPERATURE

MODEL	DESCRIPTION
CLEARSCAN	1, 2 or 3 pen temperature, pressure & flow recording
	Uses proven and reliable Rotothem temperature, pressure and differential pressure systems
	Simple installation and maintenance requirements
	Wall, panel, portable or pipe mounting available
	Fully mechanical versions available
	Electrical, battery or mechanical chart drive options
	Large 12 inch diameter chart
	Large choice of temperature, pressure and differential pressure ranges

NEW



www.rototherm.co.uk

OPTRIS FIXED - INFRARED CAMERAS

MODEL	DESCRIPTION
PI160	160 x 120 pixel IR cameras, 120 Hz, thermal sensitivities from 0.08 - 0.1K
PI200/PI230	160 x 120 pixel Bi-Spectral camera's, 128Hz, Thermal sensitivities from 0.08 - 0.1K
PI400/PI450	382 x 288 pixel IR cameras, 80 Hz, thermal sensitivities from 0.04 - 0.1K

NEW



OPTRIS INFRARED THERMOMETERS - COMPACT SERIES

MODEL	DESCRIPTION
CSLT	Single piece sensor with smart LED display
CSMIRCO	Single piece sensor with electronics in cable & smart LED display
CSMICRO-2W	Single piece two-wire sensor with electronics in cable
CSMICRO2W-HS-LT	Single piece two-wire sensor with electronics in cable with high thermal sensitivity
CSMICRO2W-2M	Single piece two-wire sensor with electronics in cable for metal applications
CT-LT	Two piece sensor with separate electronic display box
CT-FAST	Two piece sensor with fast response time & separate electronic display box
CT-HOT	Two piece sensor for hot surrounds, includes separate electronic display box
CT-1M/2M	Two piece sensor for high temp measurement of metal, includes separate electronic display box
CT-3M	Two piece sensor for mid temp measurement of metal, includes separate electronic display box
CT-G5	Two piece sensor measurement of glass, includes separate electronic display box
CT-P7	Two piece sensor measurement of plastic, includes separate electronic display box

NEW



CT-1M/3M



CS sensor



CT

OPTRIS INFRARED THERMOMETERS - PORTABLE THERMOMETERS

MODEL	DESCRIPTION
LS	Portable thermometer for non-metal surfaces, temp range -35 to 900°C
P20-LT	Portable thermometer for non-metal surfaces, temp 0 to 1300°C
P20-1M/2M/05M	Portable thermometer for metal surfaces, temp ranges form 385 to 2000°C
MS-LT	Portable thermometer for non-metal surfaces, temp range -32 to 420°C

NEW



OPTRIS INFRARED THERMOMETERS - HIGH PERFORMANCE SERIES

MODEL	DESCRIPTION
CSLASER	Single piece two-wire sensor with electronics built in
CSLASER-2M	Single piece two-wire sensor for metals with electronics built in
CTLASER-LT	Two piece sensor with separate electronic display box and high optical resolution
CTLASER-LTF	Two piece sensor with separate electronic display box, high optical resolution and fast response time
CTLASER-05M	Two piece sensor with separate electronic display box, for measurement of liquid metal
CTLASER-1M/2M	Two piece sensor with separate electronic display box, for high temp measurement of metal
CTLASER-3M	Two piece sensor with separate electronic display box, for mid temp measurement of metal
CTXL-3M	Two piece sensor with separate electronic display box, for laser applications, high optical resolution
CTLASER-G5	Two piece sensor with separate electronic display box, for measurement of glass, high optical resolution
CTLASER-P7	Two piece sensor with separate electronic display box, for measurement of plastic foils
CTRATIO	Ratio pyrometer for high temp with separate electronic display box, glass fiber cable and laser.

NEW



CSLASER-2M



CTLASER-1M/2M

www.optris.com

TEMPERATURE DATA LOGGER

MODEL	DESCRIPTION
	Data logging for temperate in storage and transport with LCD display
	Ranges -30 to 60°C, accuracy ±0.8°C
	Memory of 8 000 readings
EBI-20-T	Temperature logger with internal sensor
EBI-20-TH	Temperature / Humidity logger with internal sensor
EBI-20-IF	Interface and software
EBI-20-WM	Wall mount bracket



USB TEMPERATURE DATA LOGGER

MODEL	DESCRIPTION
	Data logging for temperature in cold chain monitoring with automatic PDF report generation, direct USB readout and online configuration
EBI-300	Standard USB data logger
EBI-310	High precision USB data logger
TPC-300	External probe for EBI 300 (-35°C to +75°C)
TPX-220	External probe for EBI 310 (-200°C to +250°C)
TPX-250	External probe for EBI 310 (-85°C to +50°C)
EBI-300WM	Wall mount for EBI 300 / 310



HUMIDITY / TEMPERATURE HANDHELD METER

MODEL	DESCRIPTION
MDM25-xxx	Digital handheld temperature / humidity meter with various probes
MDM25-FPR	Fixed probe
MDM25-SPR	Standard probe
MDM25-SWPR	Sword type probe
MDM-HTPR300	300mm remote high temperature probe
MDM-HTPR500	500mm remote high temperature probe



HUMIDITY / TEMPERATURE SENSORS

MODEL	DESCRIPTION
WM-522-xx	Mini wall-mounted transmitter Output 1 : 4-20 mA = 0 - 100 %RH Output 2 : 4-20 mA = 0 - 100°C
WM-523-xxx	Mini wall-mounted transmitter with LCD display Output 1 : 0-10 Vdc = 0 - 100 % RH Output 2 : 0-10 Vdc = 0-100°C
DT722-xxx	Rugged industrial transmitter with a probe Output 1 : 4-20 mA = 0 - 100%RH Output 2 : 4-20 mA = 0 - 100°C
DT722-xxx	Rugged industrial transmitter with LCD display and a probe Output 1 : 4-20 mA = 0 - 100 %RH Output 2 : 4-20 mA = 0 - 100°C

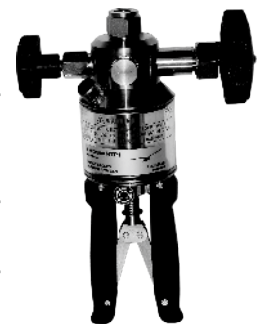


www.michell.com/uk

PNEUMATIC / HYDRAULIC HAND PUMPS - PRESSURE CALIBRATION

MODEL	DESCRIPTION
2911	Pneumatic pressure hand pump Range of 0 to 7 bar
2941	Pneumatic vacuum hand pump Range of -850 mbar to 0 bar
LPP30	Pneumatic scissor grip hand pump, source pressure and vacuum Range of -850 mbar to 35 bar
LPP700	Hydraulic scissor grip hand pump, source pressure Range of 0 to 700 bar
LPP60-T	Calibration pneumatic test pump (Desk mount) Range of 0 to 60 bar

All hand pumps supplied with carry case



NEW

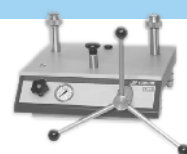
DEAD WEIGHT TESTERS

MODEL	DESCRIPTION
CPB5000-xxx	Hydraulic dead weight tester, single piston Ranges from 60 bar to 1000 bar Stainless steel weight set in wooden carry case Digital pressure displays optional



PRESSURE COMPARATOR

MODEL	DESCRIPTION
LSP-xxx	Hydraulic pressure comparator Ranges from 100 bar to 1600 bar Digital pressure displays optional



www.druck-temperatur.de
WWW.INSTROTECH.CO.ZA



PORTABLE TEMPERATURE CALIBRATORS

NEW

MODEL	DESCRIPTION
PYROS-125	Low cost dry block calibrator Temperature range: -24 to +125°C Execution: dry block Stability: ±0.05 Temperature units: °C / °F
PYROS-375	Low cost dry block calibrator Temperature range: +30 to +375°C Execution: dry block Stability: ±0.15 Temperature units: °C / °F
PYROS-650	Low cost dry block calibrator Temperature range: +35 to +650°C Execution: dry block Stability: ±0.3 Temperature units: °C / °F
QUARTZ	High accuracy dry block calibrator Temperature range: -30 to +150 Execution: dry block Stability: ±0.03 (@ 0°C) Temperature units: °C / °F / K
PULSAR-35Cu	High accuracy dry block calibrator Temperature range: +20 to +600 Execution: dry block Stability: ±0.05 (@ 450°C) Temperature units: °C / °F / K
PULSAR-80Cu	High accuracy dry block calibrator Temperature range: +20 to +550 Execution: dry block Stability: ±0.05 (@ 450°C) Temperature units: °C / °F / K
SOLAR	High temperature range dry block calibrator Temperature range: +200 to +1100 Execution: dry block Stability: ±0.3 (@ 1000°C) Temperature units: °C / °F / K
FLUID100	High accuracy temperature bath Temperature range: -12 to +125 Execution: fluid bath Stability: ±0.02 (@ -5°C) Temperature units: °C / °F / K
FLUID200	High accuracy temperature bath Temperature range: Ambient to +200 Execution: fluid bath Stability: ±0.02 (@ 150°C) Temperature units: °C / °F / K



Pyros



Solar



Pulsar



Fluid

AC OUTPUT ACCELEROMETER

MODEL	DESCRIPTION
MTN1100C-xxx	AC output accelerometer, includes M8 quick fit stud
	Sensitivity 100 mV/g
	Cable : 5 meters standard
	Submersible and Intrinsically safe versions available



DC OUTPUT ACCELEROMETER

MODEL	DESCRIPTION
MTN1185C-xxx	4-20mA dc output accelerometer, includes M8 quick fit stud
	Ranges : 10 mm/s up to 100 mm/s
	Cable : 5 meters standard
	Intrinsically safe versions available



PORTABLE VIBRATION METER

MODEL	DESCRIPTION
MTNVM220	Hand held acceleration / velocity / displacement meter
	Acceleration: 20g
	Velocity: 200mm/s
	Displacement: 2000µm
	Modes: RMS, peak, peak-peak, crest factor, bearing acceleration, bearing velocity

NEW



www.monitran.co.uk

INDUCTIVE PROXIMITY SWITCHES

MODEL	DESCRIPTION
BO1 / BO3-xxx	Suitable for limit / speed switches
	Connection of cable or plug
	Outputs : PNP, NPN, NO/NC and AC Switches
	Diameter : 8 / 10 / 12 / 18 / 28 / 50 mm
	Ranges : 2 / 3 / 4 / 8 / 15 / 35 / 50 mm



ANALOGUE OUTPUT PROXIMITIES

MODEL	DESCRIPTION
B50-xx	Suitable for Distance Measurement
	Connection : Plug
	Outputs : 0-10 Vdc or 4-20 mA
	Diameter : 12 / 18 / 30 / 80 x 80 mm
	Ranges : 4 / 8 / 10 / 60 mm



CAPACITIVE PROXIMITY SWITCHES

MODEL	DESCRIPTION
K01-xxx	Cylindrical and block mount switches
	Connection : Plug / cable
	Outputs : PNP / NPN / NO / NC switches
	Diameters : 18 / 22 / 30 / 32 / 50 mm
	Ranges : 2-70 mm



PHOTO-ELECTRIC SWITCHES / BEAMS

MODEL	DESCRIPTION
OCV87D-xxx	Direct Switches Ranges / diameter : 0-1 m / 30 mm Connection : Cable Outputs : PNP / NPN / NO / NC switches
OCV87C-xxx	Reflective Switches Ranges / diameter : 0-5 m / 30 mm Connection : Cable Outputs : PNP / NPN / NO / NC switches
OCV81-xxx	Beam Switches Ranges / diameter : 0-15 m / 18 mm Connection : Cable Outputs : PNP / NPN / NO / NC switches



BEAM

www.selet.it

LINEAR AND PRECISION POTENTIOMETERS (HEAVY DUTY)

MODEL	DESCRIPTION
H28-xxx	Linear potentiometers, heavy duty IP55 (Optional IP64) Linearity = 0.1% Ranges : 0 to 1000 mm



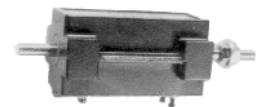
LINEAR AND PRECISION POTENTIOMETERS (LIGHT DUTY)

MODEL	DESCRIPTION
P12-xxx	Linear potentiometers, light duty, IP55 Linearity = 0.5% Ranges : 0 - 300 mm



LINEAR AND PRECISION POTENTIOMETERS

MODEL	DESCRIPTION
H20-xxx	Linear potentiometers, short stroke, miniature Linearity =1% Ranges : 10 mm (1K)



www.mcbindustrie.com

STEAM LEAK DETECTION SYSTEMS FOR POWER STATION BOILERS

MODEL	DESCRIPTION
FFT-16	Inspecta FFT16-point system
FFT-32	Inspecta FFT32-point system
FFT-HA-3	Inspecta sensor and head amplifier with housing
FFT-MC	Inspecta sensor capsule assemble
FFT-PVC	Inspecta pipework Sets, PVC and valve



www.inspectasld.com
WWW.INSTROTECH.CO.ZA

MINERAL INSULATED AND GENERAL PURPOSE THERMOCOUPLES AND RTD'S

MODEL	DESCRIPTION
TC	Type : K, J, T, E, N, R, S, B Diameters : 1 / 1.5 / 3 / 3.2 / 4 / 4.5 / 4.8 / 6 / 6.35 / 8 / 9.5 / 10.8 / 12.7 mm Sheath types : Stainless Steel 310, 311, 316, 446 / Inconel 600, 601 / Nimonic / Nicrobell
RTD	Types : Pt100 / 150 / 500 / 1000 or Ni100 Diameters : 3 / 4.8 / 6 / 6.35 / 8 / 9.5 / 10 / 12 / 12.7 mm Lengths : 10 mm to 30 000 mm (depending on Diameter) Terminal Heads : Die cast aluminum, stainless steel, polypropylene, nylon, cast iron Terminations : Potting adaptors to standard / custom dimensions, various flylead types Flylead insulation types : PVC / Teflon / Silicon / Glass or mineral fibre, all with optional SS overbraid



THERMOWELLS

MODEL	DESCRIPTION
TW-xxx	Types : Solid drilled screwed and flanged, fabricated cold closed threaded and flanged Diameters : from 6 to 80 mm Lengths : 10 to 1400 mm solid drilled , up to 6 m fabricated Materials : Stainless steel 304, 316, 310, 321, 446, 253ma, 353ma, 904 / Sanicro 28 / Inconel 600, 601, 800HT, 825 / Titanium / Teflon



Product Warranty



Each Instrotech product is warranted to be free from defects in material and workmanship under normal use and service, for two years. The warranty period starts on the day of shipment and extends only to the original buyer or end-user customer of a Instrotech authorized reseller. The warranty does not apply to any disposable batteries or fuses. The warranty does not apply to any product, which, in Instrotech's opinion, has been misused, neglected, altered or damaged by accident or by abnormal conditions of operation or handling. Instrotech warrants that the software will operate in accordance with its functional specifications for three months and that it has been properly recorded on non-defective media. Instrotech does not warrant that the software will be error free or operate without any interruption.

The warranty is not transferable and covers only the original purchaser. To establish original ownership and proof of the date of purchase, please complete and return the registration card accompanying the product.

Service

Instrotech will, at its discretion, repair at no charge, replace or refund the purchase price of a defective product purchased through an Instrotech authorized sales outlet and at the applicable international price. Instrotech reserves the right to charge for the importation costs of repair and/or replacement parts if the product purchased in one country is sent for repair elsewhere.

Send the defective product with a description of the problem to the nearest Instrotech authorized reseller or service centre, postage and insurance prepaid. Instrotech will pay for the return transportation of the product repaired or replaced under warranty.

Before making any non-warranty repair, Instrotech will provide an estimate of the cost and obtain authorization, then invoice you for the repair and return transportation.

THIS WARRANTY ONLY COVERS THE REASONS DETAILED ABOVE. NO OTHER WARRANTIES, SUCH AS SUITABILITY FOR A PARTICULAR PURPOSE, ARE STATED OR IMPLIED. INSTROTECH IS NOT LIABLE FOR ANY SPECIAL, INDIRECT, INCIDENTAL OR CONSEQUENTIAL DAMAGES OR LOSSES, INCLUDING LOSS OF DATA, ARISING FROM ANY CAUSE OR THEORY.

AUTHORIZED INSTROTECH RESELLERS ARE NOT AUTHORIZED TO CHANGE OR OFFER ANY DIFFERENT WARRANTY ON INSTROTECH'S BEHALF.



A Comtest Group Company

8 Enterprise Close, Linbro Park
Gauteng, 2090, South Africa
PO Box 1208, Linbro Park, 2066

Tel : +27 (0) 11 462 1920
Fax : +27 (0) 11 462 1958

WWW.INSTROTECH.CO.ZA

Contact your local distributor

