



# **Embed-It!® Integrator Online™**

## **User Manual**

---

## Copyright Notice and Proprietary Information Notice

© 2015 Synopsys, Inc. All rights reserved. This software and documentation contain confidential and proprietary information that is the property of Synopsys, Inc. The software and documentation are furnished under a license agreement and may be used or copied only in accordance with the terms of the license agreement. No part of the software and documentation may be reproduced, transmitted, or translated, in any form or by any means, electronic, mechanical, manual, optical, or otherwise, without prior written permission of Synopsys, Inc., or as expressly provided by the license agreement.

### Destination Control Statement

All technical data contained in this publication is subject to the export control laws of the United States of America. Disclosure to nationals of other countries contrary to United States law is prohibited. It is the reader's responsibility to determine the applicable regulations and to comply with them.

### Disclaimer

SYNOPSYS, INC., AND ITS LICENSORS MAKE NO WARRANTY OF ANY KIND, EXPRESS OR IMPLIED, WITH REGARD TO THIS MATERIAL, INCLUDING, BUT NOT LIMITED TO, THE IMPLIED WARRANTIES OF MERCHANTABILITY AND FITNESS FOR A PARTICULAR PURPOSE.

### Trademarks

Synopsys and certain Synopsys product names are trademarks of Synopsys, as set forth at <http://www.synopsys.com/Company/Pages/Trademarks.aspx>.

All other product or company names may be trademarks of their respective owners.

Synopsys, Inc.  
690 E. Middlefield Road  
Mountain View, CA 94043  
[www.synopsys.com](http://www.synopsys.com)

# Contents

Chapter 1	
Introduction .....	5
1.1 The Benefit to Synopsys Customers .....	5
1.2 What You Need to Run Integrator Online™ .....	5
1.2.1 Evaluation Agreement .....	5
Chapter 2	
Running the Integrator Online .....	9
2.1 Working with Memory Components .....	11
2.1.1 Creating a New Component .....	11
2.1.2 Importing a Component .....	18
2.1.3 Generating a Component .....	18
2.1.4 Downloading the Generated Files .....	18
2.2 Performing Certain Tasks on Components .....	19
2.2.1 Editing the Selected Component .....	19
2.2.2 Showing the Output View for a Selected Component .....	20
2.2.3 Deleting a Component .....	20
2.3 Disconnecting and Exiting .....	20
Chapter 3	
Integrator Online: Command Line Access .....	21
Appendix A	
Output File Structure .....	23
Index .....	25



# 1

## Introduction

### 1.1 The Benefit to Synopsys Customers

Integrator Online™ provides you access to the functionality of Synopsys' Embed-It!® Integrator software. If you are a System-on-a-Chip designer evaluating Synopsys Products, you can generate memory instances and study the trade-offs between memory-core types and variants. You can thus make better decisions about the suitability of Synopsys intellectual property for inclusion in your designs. If you are a designer considering Synopsys's Compiler Tools, you can use the software without having to install it on your own computers.

Integrator Online is available both as a client-side Java application deployed using Sun's Java™ Web Start technology and a browser-based tool. The interface of the browser-based and client-side Java versions of Integrator Online are almost identical to each other, and also very similar to Embed-It!® Integrator. However, the client-side Java version of the tool has many features that make the usage, customization and generation of memory instances as easy as possible. Hence, it is recommended that you use the client-side Java application instead of the browser-based tool wherever possible. An Integrator Online command line client is also available for execution and can be used according to instructions in [Chapter 3, “Integrator Online: Command Line Access”](#).

### 1.2 What You Need to Run Integrator Online™

All you need to be able to run Integrator Online as a client-side Java application is a Java Runtime Environment (JRE) 1.4.2 + and Java™ Web Start software. The Web Start software is available free of charge at <http://java.sun.com/products/javawebstart/>. The default locale for Integrator Online is set to English(US).

To run the browser-based client, you need an active Internet connection and a Java 1.1 enabled browser. Once a Synopsys staff member has set up an account for you, you can simply go to the URL they provide you, log in, and start using the tool.

#### 1.2.1 Evaluation Agreement

The IOL system displays the Evaluation Agreement upon the first login of every evaluation period. The evaluation period will reset if any of the following fields of the account are changed:

“Email Address” and/or “Default Library Access” and/or “Resources”.

**Attention**

The changed account will require accepting again the evaluation agreement upon next login.

### 1.2.1.1 Behavioral details

The evaluation agreement is prompted in the IOL GUI (Client) mode only. The IOL batch (RVMC) mode checks whether the agreement has been accepted or not upon login. The tool returns an error code upon login and requests to login by using the GUI interface if the agreement is not accepted. The error message is the following:

Error: Before running in batch, please first login using the IOL GUI to review and accept the Evaluation Agreement.

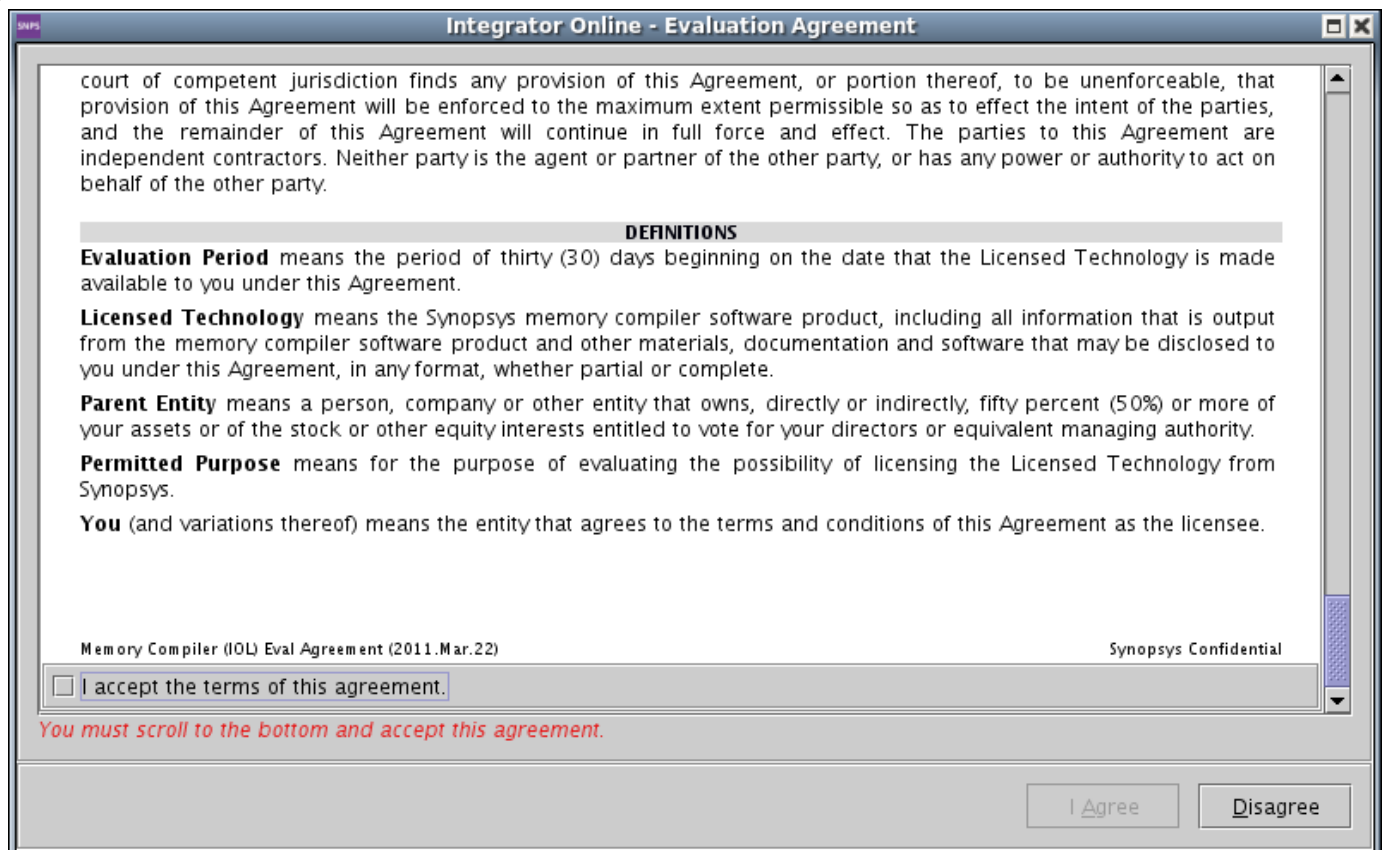
To display the agreement in the IOL GUI (Client) a modal dialog is used (See [Figure 1-1](#)).

The dialog consists of the agreement text widget, a check box, and two buttons: **I Agree**, **Disagree**. After reading the agreement text, you should select the check box below that text to activate the **I Agree** button to be able to proceed with login procedure.

If “**I Agree**” button is pressed the login procedure will set the accept agreement date in the IOL database and continue the login procedure.

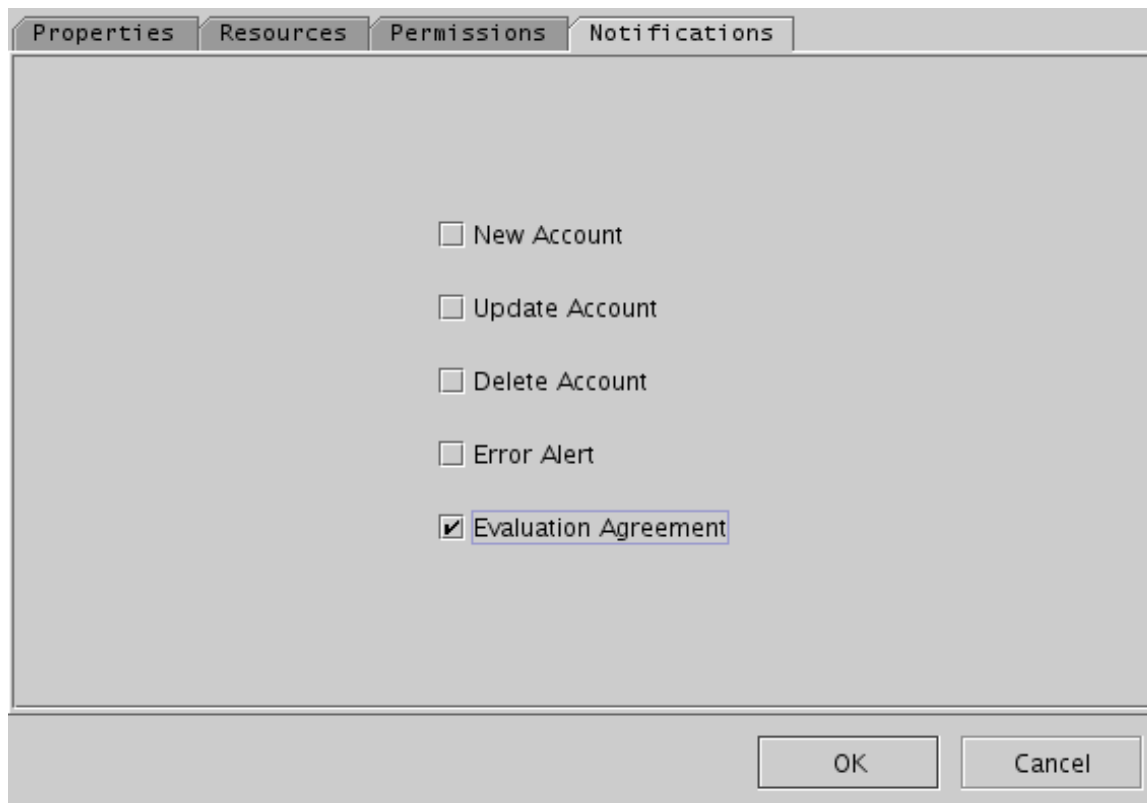
If “**Disagree**” button is pressed the login procedure will be interrupted.

**Figure 1-1**



The notification mechanism of the IOL system supports an evaluation period notification feature. Some users can be subscribed to the Evaluation Agreement email notification by using the Account Management Tool (AMT). The “Notifications” tab contains an additional check box with text “Evaluation Agreement” (See [Figure 1-2](#)).

**Figure 1-2**



If the check box of the user's profile is selected the user will receive all evaluation notifications:

- Start the evaluation period (see above);
- End the evaluation period (see above).





## 2

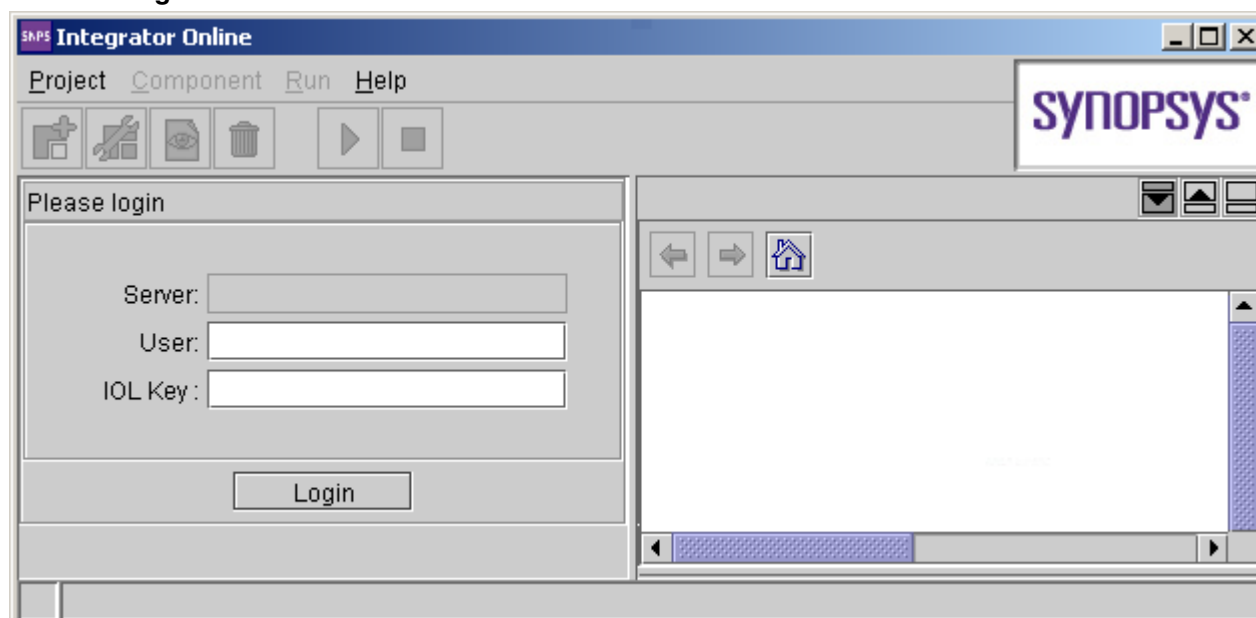
## Running the Integrator Online

Once your Integrator Online account has been created, you will receive an email from the Integrator Online Account Administrator providing you with your User Name and IOL Key, as well as the URLs for the browser-based and client-side versions of Integrator Online.

To run the client-side Java version of Integrator Online, simply enter the URL for that version into any browser window. The application will be downloaded and launched, as shown in [Figure 2-1, “Login Window”](#). Integrator Online supports HTTPS connection for secure instance generation. Note that this version runs in a separate window from your browser. Also, note that you must have JRE 1.4.2+ and Sun's Java™ Web Start (JWS) software installed before you run the client-side version of Integrator Online. In section [“What You Need to Run Integrator Online™”](#) on page 5 of this guide, there is information on how to obtain the necessary software.

The next time you use the client-side Java version of Integrator Online, it will launch from the copy that was downloaded and installed the first time if Integrator Online is not updated on the server, and it will start up much faster.

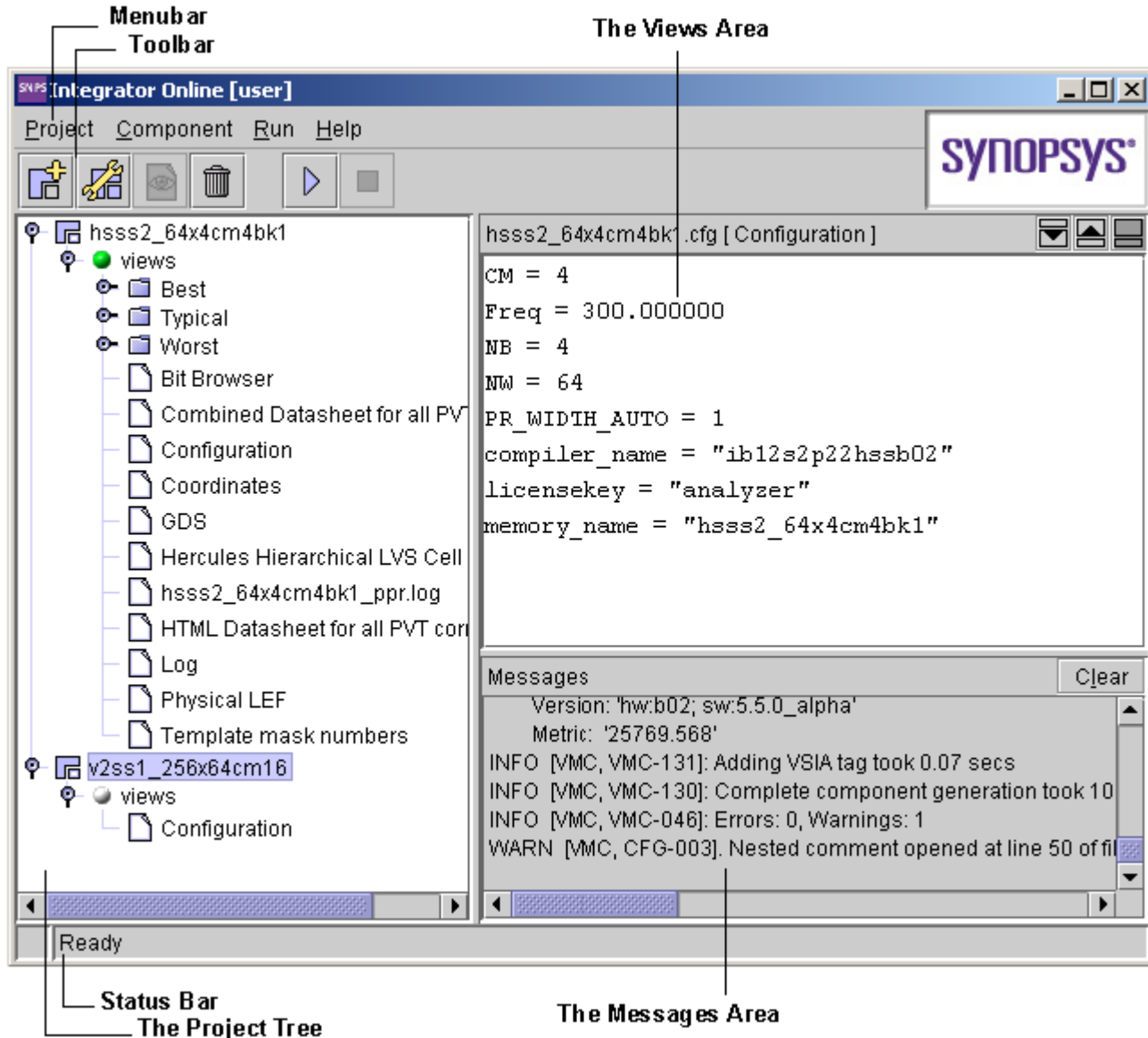
**Figure 2-1 Login Window**



In the Login Window, enter your user name in the field marked User and your IOL Key in the field marked IOL Key and press **Login**.





Once you have successfully logged in, the Main window shown in [Figure 2-2, “Main Window”](#) appears:

**Figure 2-2 Main Window**



This window has the menu bar, the toolbar below the menus and the status bar at the bottom. The area between the toolbar and the status bar is occupied by a three-part window.

- There is a Project Tree that appears when you create a new component or import an existing component into your project. The Project Tree shows the components by their names and associated views. Indicator “lights” for each component in the Project Tree provide the status of each action run on the component. *Gray* means that the component has not been generated yet. *Green* means successful run without Errors or Warnings. *Red* means Errors/Warnings are encountered during run.

- There is a Views Area that shows an output view for a component in the Project Tree. Highlighting an output view for a component in the Project Tree and double-clicking the mouse displays the file contents in the Views area. Use the  button if you want to show the Views area only and the  button to show Messages and Views windows concurrently.
- There is a Messages Area that displays all information messages that occur when you apply a command to a project. Use the  button if you want to show the Messages area only and the  button to show Messages and Views windows concurrently.

## 2.1 Working with Memory Components

Integrator Online application provides you with an easy way to work with memory components. Only a few successive steps are required to create a new component and generate an output view for it.


To create a new component, you simply select a compiler and start configuring the component by supplying necessary parameters and data. Information on different memory parameters and data that you may need to supply during component configuration stage is available in section [“Creating a New Component”](#) on page 11.

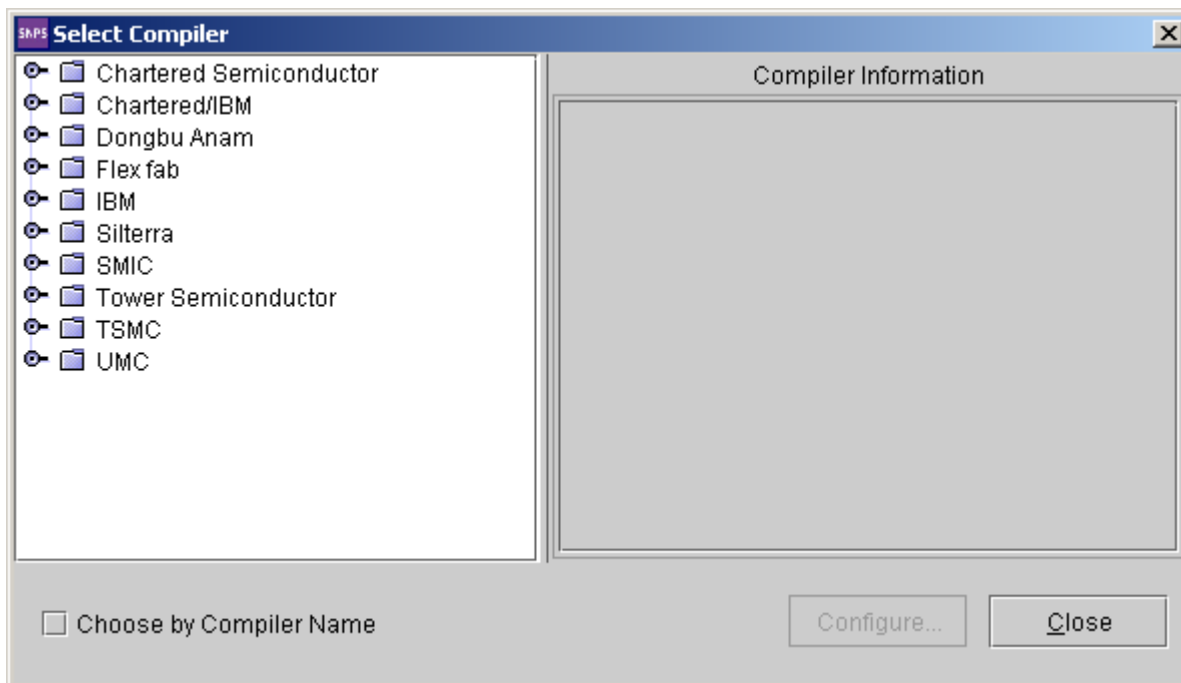
Integrator Online also enables you to create components based on existing \*.cfg files that contain component configuration. See section [“Importing a Component”](#) on page 18 for more details on how you import a component.

After you configure your component, you must generate it to create an output view for it. See [“Generating a Component”](#) on page 18. The component creation process involves a few formal procedures that Integrator Online accomplishes automatically. When you generate a component, the tool automatically sets up an initial directory structure for the component on the server. When you attempt to download the files for the generated component, the initial directory structure is preserved. See [“Downloading the Generated Files”](#) on page 18.

At any time during your work, you can consult this User's Manual for assistance by selecting **Help > User's Manual** from the menu option or by pressing the **F1** key on your keyboard.

### 2.1.1 Creating a New Component

Selecting **Component > New** menu option (  ) opens the Select Compiler dialog shown in [Figure 2-3](#), [“Select Compiler Window”](#) below:

**Figure 2-3 Select Compiler Window**

By default, the compilers added to your account by the Administrator are listed by type of compiler. Integrator Online allows to configure memory and ROM compilers only.

Click on the node handle beside the name of compiler to display the sub-categories of available compilers. The tree of sub-categories is based on compiler identification information including target foundry (**Foundry**), process geometry (**Process**), compiler name (**Compiler**) and compiler revision level (**Revision**). Once you have navigated down to selecting a specific compiler, the Compiler Info area on the right-hand side of the Configure Compiler dialog displays all the identification information for the compiler.

You can also check the *Choose by Compiler Name* checkbox to list the compilers by name. After you choose the required compiler, select the **Configure** button to open the Configure Component dialog shown in [Figure 2-4, “Configure Component Window”](#) below:

**Figure 2-4 Configure Component Window**

Enable	Process	Voltage (V)	Temp (C)	Name
<input checked="" type="checkbox"/>	FFQU	0.935	-40.0	ffqu0p9...
<input checked="" type="checkbox"/>	TTQU	0.85	25.0	ttqu0p8...
<input checked="" type="checkbox"/>	SSQU	0.765	125.0	ssqu0p7...
<input type="checkbox"/>	SSQU	0.765	-40.0	ssqu0p7...
<input checked="" type="checkbox"/>	FFQU	0.935	125.0	ffqu0p9...
<input checked="" type="checkbox"/>	SSQU	0.765	0.0	ssqu0p7...
<input checked="" type="checkbox"/>	FFQU	0.935	0.0	ffqu0p9...
<input type="checkbox"/>	TTQU	0.68	25.0	ttqu0p6...
<input type="checkbox"/>	SSQU	0.68	-40.0	ssqu0p6...
<input type="checkbox"/>	SSQU	0.68	125.0	ssqu0p6...
<input type="checkbox"/>	SSQU	0.595	0.0	ssqu0p5...
<input type="checkbox"/>	SSQU	0.595	125.0	ssqu0p5...
<input type="checkbox"/>	TTQU	0.85	0.0	ttqu0p8...
<input type="checkbox"/>	SSQU_WRC	0.765	0.0	ssquwrc...
<input type="checkbox"/>	SSQU_WRC	0.765	125.0	ssquwrc...
<input type="checkbox"/>	SSQU_WRC	0.765	-40.0	ssquwrc...
<input type="checkbox"/>	FFQU_BRC	0.998	125.0	ffqubrc0...
<input type="checkbox"/>	FFQU_BRC	0.998	-40.0	ffqubrc0...
<input type="checkbox"/>	FFQU_BRC	1.2	140.0	ffqubrc1...
<input type="checkbox"/>	SSQU_WRC	0.81	0.0	ssquwrc...

The Configure Component dialog can look slightly different for two or more compilers of the same type, depending on the features available for that compiler.

The general instance parameters to supply are:

- The **Number of Words** in the instance.
- The number of **Bits in Word** for the memory instance.
- The **Column Mux Option** (or number of physical columns per I/O pin). It provides the set of valid CM values and identifiers for the various estimated aspect ratios for the compiler. You can select the CM from the values in the pull down list. The options available in the pull down list will vary depending on the values set for **Number of Words** and **Number of Bits**.
- The **Frequency (in MHz)** at which the memory instance is to operate.
- The **Write ports** for the memory instance.
- The **Read ports** for the memory instance.
- The **Number of Banks** (horizontal banks) for the memory instance.
- The **Number of Vertical Banks** for the memory instance.
- The **Number of Bits in Subword** for the memory instance.

- The **Signal Metal** for the memory instance.
- The **Redundancy enable** for the memory instance: **true** for a STAR and **false** for an ASAP memory.
- There is also a check box for **Automatic Memory Naming**. If you check this box, the **Memory Name** field will be filled in automatically for you.

On the right hand side of the General Parameters window you can define and edit the operating points, or **PVT** conditions, for which data will be generated during the instance generation process. Three operating points are already listed when you start setting the parameters, each with a Process condition, Operating Voltage (V), and Junction Temperature (C) already defined. Click the **New** button to add an operating condition or the **Edit** button to change the parameters for an existing operating point. In either case, the PVT window appears as shown in [Figure 2-5, “PVT Window”](#) below:

**Figure 2-5 PVT Window**

The screenshot shows a dialog box titled "SAPS PVT". It contains the following fields and controls:

- Process Condition:** A dropdown menu currently showing "T (Typical)".
- Operating Voltage(V):** A text input field.
- Junction Temperature(C):** A text input field.
- Name:** A text input field.
- At the bottom, there are two buttons: "Ok" and "Cancel".

Specify the **Process Condition**, **Operating Voltage (V)**, and **Junction Temperature (C)**, and assign a **Name** to the operating point you are adding or changing. Just like the General Parameter Window, as you click in each field and enter values for the operating parameters, Integrator Online shows you the allowed values and ranges for each parameter in the **Status Area** at the bottom of the window. When you download the output files for an instance, Integrator Online creates a subdirectory under the instance directory for each operating point. The **Name** you specify for each operating point in the above window becomes the name of the subdirectory. If available for the specific compiler, enter/modify the bias voltage values to be used for corner definition. Click the **Ok** button in the PVT Window after you finish adding the new operating point or making the changes to an existing one. This will save the changes you made and take you back to the window with parameters in the General tab. Clicking **Cancel** discards any changes to the operating points and takes you back to the window with parameters in the General tab.

Use the check boxes in each PVT row to enable or disable a PVT. A selected check box for a PVT means that this PVT is enabled and will be generated while running component generation. A deselected one is grayed

out and means that it will not be generated while running component generation. Using the check box in the header of the PVT table, you can enable or disable all PVTs.

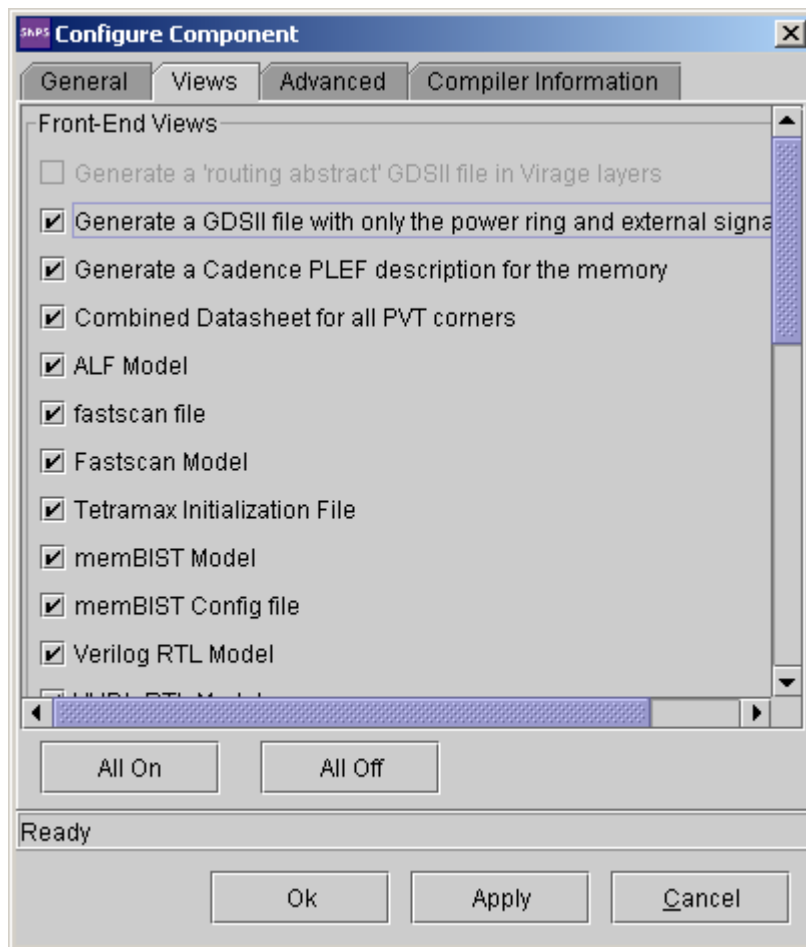
<input type="checkbox"/> Enable	Process	Voltage (V)	Temp (C)	Name
<input checked="" type="checkbox"/>	FFQU	0.935	-40.0	ffqu0p9...
<input checked="" type="checkbox"/>	TTQU	0.85	25.0	ttqu0p8...
<input checked="" type="checkbox"/>	SSQU	0.765	125.0	ssqu0p7...
<input type="checkbox"/>	SSQU	0.765	-40.0	ssqu0p7...
<input checked="" type="checkbox"/>	FFQU	0.935	125.0	ffqu0p9...
<input checked="" type="checkbox"/>	SSQU	0.765	0.0	ssqu0p7...
<input checked="" type="checkbox"/>	FFQU	0.935	0.0	ffqu0p9...
<input type="checkbox"/>	TTQU	0.68	25.0	ttqu0p6...
<input type="checkbox"/>	SSQU	0.68	-40.0	ssqu0p6...
<input type="checkbox"/>	SSQU	0.68	125.0	ssqu0p6...
<input type="checkbox"/>	SSQU	0.595	0.0	ssqu0p5...
<input type="checkbox"/>	SSQU	0.595	125.0	ssqu0p5...
<input type="checkbox"/>	TTQU	0.85	0.0	ttqu0p8...
<input type="checkbox"/>	SSQU_WRC	0.765	0.0	ssquwrc...
<input type="checkbox"/>	SSQU_WRC	0.765	125.0	ssquwrc...
<input type="checkbox"/>	SSQU_WRC	0.765	-40.0	ssquwrc...
<input type="checkbox"/>	FFQU_BRC	0.998	125.0	ffqubrc0...
<input type="checkbox"/>	FFQU_BRC	0.998	-40.0	ffqubrc0...
<input type="checkbox"/>	FFQU_BRC	1.2	140.0	ffqubrc1...
<input type="checkbox"/>	SSQU_WRC	0.81	0.0	ssquwrc...

New Edit Delete Defaults

On the **General** tab, clicking **Ok** saves all the settings, including memory parameters and PVT conditions that define the compiler output files. Clicking the **Defaults** button in the General tab restores all PVT values to their default values. Clicking **Apply** keeps the Configure Component dialog open for you to enter edits for additional component configurations based on the same compiler.

Any PVT that matches a user-characterized corner in the characterization database cannot be edited or deleted. Upon edit or delete operations an error message is displayed warning that the given user-characterized corner can only be enabled or disabled for instance generation.

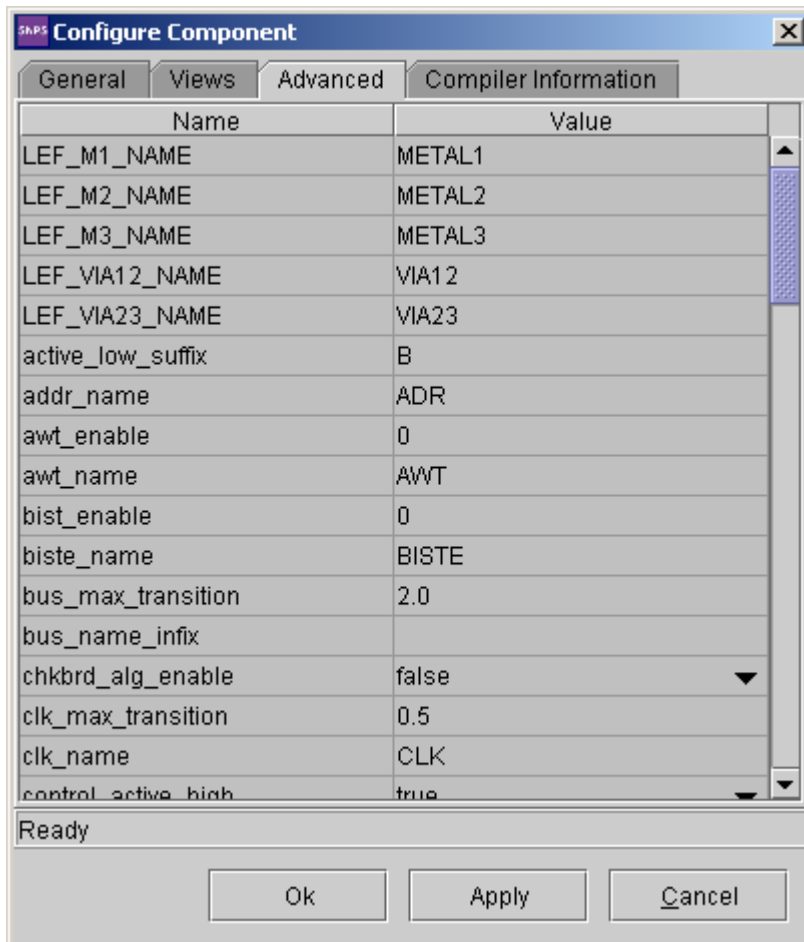
The **Views** tab lists the views you can generate for a given memory. These define the output files that will be generated for the memory. Views available for the compiler you selected but which you do not have a license for will be grayed out. You can select which specific views have to generated for your memory.

**Figure 2-6 Configure Component Dialog - Views Tab**

The top portion of the tab lists front-end views, the datasheet views are in the middle, and the backend views are along the bottom. Buttons at the bottom of the dialog enable you to change the settings for all the views you have access to with one click. The **All Off** button turns off the generation of all the views active on the **Views** tab, while **All On** turns on the generation of all licensed views.

Clicking the **Advanced** tab on the Configure Component dialog takes you to the Advanced Parameters window. This window contains a number of additional parameters that control the instance and associated Views generated by Integrator Online. The Advanced Parameters window comes up with these parameters set to their default values, as shown in [Figure 2-7, “Advanced Parameters Window”](#) below:



**Figure 2-7 Advanced Parameters Window**

For parameters that have a range, Integrator Online shows you the allowed values and ranges in the **Status Area** at the bottom of the window. Use the Advanced Parameters window when you need to generate an instance with more specific settings than the basic parameters in the General Parameters window can provide. These parameters are a subset of the Embed-It!® control parameters that are available to the user of Synopsys' Embed-It!® Integrator software. Click the **Ok** button to save any changes you specify for the advanced parameters. Clicking **Cancel** discards any change to the advanced parameters. Clicking **Apply** enables you to apply changes to the additional component that you configure based on the current compiler.

The component you have created and configured will be displayed and highlighted in the Project Tree. You can also click **Apply** to keep the Configure Component dialog open to enter edits for additional component configurations based on the same compiler. Use the **Compiler Information** tab to view the compiler identification information, including target foundry (**Foundry**), process geometry (**Process**), compiler name (**Compiler**) and compiler revision level (**Revision**).

## 2.1.2 Importing a Component

Existing components can be imported into an Integrator Online project from other projects using the **Component > Import** menu option. Different components and variations have just one type of configuration file \*.cfg that can be read by Integrator Online.

In the Import Component dialog, select the *Configuration Files (\*.cfg)* options in the Files of Type field. Browse over to the \*.cfg file you want, click on it in the browse pane and press **Import** to import it. Note that trying to import the same component twice will cause Integrator Online to produce an error saying that duplicate instance names are not allowed.

## 2.1.3 Generating a Component

Indicator “lights” for each component in the Project Tree provide the status of each action run on the component. *Gray* means that the component has not been generated yet. *Green* means successful run without Errors or Warnings. *Red* means Errors/Warnings are encountered during run. When you want to generate a component, only those components that have *gray* and *red* indicators lights in the Project Tree can be generated.

Selecting **Run > Generate** menu option starts the generation process of a selected component. Selecting the **Run > Generate All** menu option starts the process of generating the instances that have *Not [Generated]* status in the Project Tree. In either case, this will display the progress of the generation process while it is taking place in the Messages Area.

The **Status Area** in the lower left hand corner of the Main window informs you of progress while the generation is in progress. During this time, only the **Abort** toolbar button is active. The Messages Area in the Main window displays the progress of the process as it happens. When instance generation is complete, the **Status Area** says Ready. You can now see all generated instances in the Project Tree with the status changed to [Generated].

The scripts list is displayed in the **Run->Script** menu of Integrator Online if there are scripts installed for your account.



Select the script you want to execute. To terminate a running script, the **Abort** button can be used. All other actions will be unavailable while the script runs.

## 2.1.4 Downloading the Generated Files

After you generate a component, its output files stay residing on the server until you download the files. Once you decide to download them, you have three options to choose from: **All**, **Component**, and **View**. Note that you downloadable are only the generated components with *green* indicator light in the Projrcet Tree.

If you want to download all components and their output views that are in the Project Tree, simply use the **Project > Download > All** menu option. In the Save As dialog, browse over to (or create) a directory where you want your files to be downloaded to and press the **Save As** button. This will start the process of downloading all components into the download directory you defined. While the files are downloaded, only the **Abort** button is active in the Download dialog. Use the **Abort** button if you want to stop downloading the files and the **Close** button to close the Download dialog when the download is complete.

If you want to download a component, simply highlight its name in the Project Tree and select **Project > Download > Component** menu option. In the Save As dialog, browse over to (or create) a directory where you want the component to be downloaded to and press the **Save As** button. This will start the process of downloading the selected component into the download directory you defined. While the files are downloaded, only the **Abort** button is active in the Download dialog. Use the **Abort** button if you want to stop downloading the files and the **Close** button to close the Download dialog when the download is complete.

If you want to download a view, simply highlight its name in the Project Tree and select **Project > Download > View** menu option. In the Save As dialog, browse over to (or create) a directory where you want your views to be downloaded to and press the **Save As** button. This will start the process of downloading the selected views into the download directory you defined. While the files are downloaded, only the **Abort** button is active in the Download dialog. Use the **Abort** button if you want to stop downloading the files and the **Close** button to close the Download dialog when the download is complete.



## 2.2 Performing Certain Tasks on Components

Integrator Online menu bar has a number of menu options that help you perform certain tasks on already created components:

- Edit the selected component. See [“Editing the Selected Component” on page 19](#).
- Show the output view for a selected component in the Views area. See [“Showing the Output View for a Selected Component” on page 20](#).
- Delete the selected component from the Project Tree. See [“Editing the Selected Component” on page 19](#).
- Generate all components in the project. See [“Generating a Component” on page 18](#).
- Abort running the job. See [“Generating a Component” on page 18](#).

Most of these options are realized as toolbar buttons and popup menus that open upon right-click on a component or its view in the Project Tree.

### 2.2.1 Editing the Selected Component


The **Edit** and **Delete** commands in the **Component** menu of the Integrator Online let you perform editing and delete operations on the component currently selected in the Project Tree. These commands work in the same way as **Edit** and **Delete** commands that appear in the popup menu upon right-click on the name of the component in the Project Tree. You can also use the  and  toolbar buttons to perform the editing and delete operations on the selected component.

If you select **Component > Edit** menu option, it displays the Configure Component dialog where you can change the general and advanced parameters for the selected component as required or view the compiler

identification information for the component on the Compiler Information tab in the Configure Component dialog. Click the **Ok** button when you finish your edits to save the changes. This operation cleans the views for the former component if it was generated and changes the state of the new component to *NOT Generated*.

## 2.2.2 Showing the Output View for a Selected Component

The Views area allows you to look at the compiler output views generated for the component. Highlight the desired view in the *views* subtree in the Project Tree and select **Component > Show View** menu option. You can also double-click the selected view in the Project Tree. In either case, it displays the contents of the selected file in the Views area. Components with status [NOT GENERATED] have only the Configuration file available for preview in the Views area.

You cannot change the values of the components directly in the Views area. Only text and HTML files can be viewed in the Views area. Any external reference in HTML files will be opened in a separate Internet browser window for preview. Binary files such as GDS must first be downloaded in order that you can preview them with the corresponding software. Just as with the Messages area, you can show the Views area only by using the  button.

## 2.2.3 Deleting a Component

To delete a component from the project, simply highlight its name in the Project Tree and select **Component > Delete** menu option. This will remove the component from the Project Tree.

## 2.3 Disconnecting and Exiting

Use the **Project > Disconnect** menu option to disconnect from the server and the **Project > Exit** menu option to exit the Integrator Online. When you disconnect the connection with the server, the Integrator Online Login Window shown in [Figure 2-1, “Login Window”](#) appears. When you exit the Integrator Online, this window disappears after you confirm that you want to exit Integrator Online.

## 3

## Integrator Online: Command Line Access

Integrator Online command line client is implemented as a single jar (Java archive) file. Application contacts the server, passes the memory configuration, initiates generation of the memory instance and then downloads all output files to the client host. If the process fails, it exits with a non-zero code and the corresponding error message is displayed.

The usage of the Integrator command line is:

```
java -jar rvmc.jar -u hostname[:port] -l loginname [-p password] -c configuration_file
[-d destination] [-k] [-f] [-h]
```

Table 3-1, “Command Line Options” below describes the purpose for each of the options:

**Table 3-1 Command Line Options**

Option	Purpose
-u hostname [:port_number]	Server host name and port number
-l login_name	User login name
-p IOL key	IOL key. If not specified, user will be prompted to enter it in the interactive mode. If the server is installed with the <b>-p</b> option disabled, you will get an error when you use the command line client.
-c configuration_file_name	The memory configuration to generate. RVMC can accept more than one configuration file per session. Use the <b>-c</b> option to specify the path to the directory that contains the *.cfg file(s).  <pre>java -jar rvmc.jar -u iol.server.com -l   UserName -c /path/to/cfg_files</pre> RVMC will recursively search and process all *.cfg files in the specified directory within a single session.
-d destination	Directory name to download instance into. The default is the current working directory.
-k	Keep a copy of the generated instance on the server.

**Table 3-1 Command Line Options**

Option	Purpose
-f	Overwrite, if there is an instance with the requested name on the server.
-h	Print usage information and exit

The exit codes are:

- 0 - Success
- 1 - Connection error
- 2 - Access denied
- 3 - Configuration file not found
- 4 - Parameter check error
- 5 - Generation Failed
- 6 - Destination directory does not exist
- 7 - Command line parsing error
- 8 - Unexpected errors

Note that if your network communicates with the Internet via a proxy server, Integrator Online allows using Java keys for specifying the proxy server name and proxy port number in the commands. The format for such commands can have the following view:

```
java -Dhttp.proxyHost=your_proxy_server_name -Dhttp.proxyPort=your_proxy_port_number -jar  
rvmc.jar -u iol.synopsys.com etc.
```

where **your\_proxy\_server\_name** and **your\_proxy\_port\_number** must be replaced with the actual values for your proxy server name and proxy port number, and the **etc.** means all other command line options to use.

If a termination signal is detected, RVMC closes current connection correctly, which is accompanied by "Logging out..." text message in the command line. The next connection session may be established as soon as the interrupted connection is closed.

## A

# Output File Structure

Integrator Online's output files reside in the instance directory.

The instance directory contains back-end files for building the memory as well as a subdirectory for each operating point.

The subdirectories each contain a set of front-end views for the respective operating point. The names and number of files in each sub-directory is the same. For example, if you specified an instance named `ts128x8cm4` and operating points named Best, Typical, and Worst, the instance directory will contain the following files and subdirectories:

<i>ts128x8cm4.cfg</i>	<i>Configuration File</i>
<i>ts128x8cm4.gds</i>	<i>GDSII File</i>
<i>ts128x8cm4_func.v</i>	<i>Verilog Netlist File</i>
<i>ts128x8cm4.cir</i>	<i>Spice Netlist File</i>
<i>ram1.ts128x8cm4</i>	<i>Abstract LEF File</i>
<i>ram1.ts128x8cm4</i>	<i>Log File</i>
<i>Best</i>	<i>Subdirectory containing Front-End Views for Best Operating Point</i>
<i>Typical</i>	<i>Subdirectory containing Front-End Views for Typical Operating Point</i>
<i>Worst</i>	<i>Subdirectory containing Front-End Views for Worst Operating Point.</i>

The contents of the subdirectories depend on the values for various advanced parameters. As an example, a subdirectory for the instance mentioned above might include the following:

<i>ts128x8cm4.ds</i>	<i>Datasheet</i>
<i>ts128x8cm4.llef</i>	<i>Logical LEF</i>
<i>ts128x8cm4.summ</i>	<i>Summary</i>
<i>ts128x8cm4_stim.v</i>	<i>Testbench for Verilog Behavioral Model and Verilog Netlist</i>
<i>ts128x8cm4.v</i>	<i>Verilog Model</i>
<i>ts128x8cm4.vhd</i>	<i>Vital Model (VHDL)</i>
<i>ts128x8cm4_qa.txt</i>	<i>Compiler QA Information</i>
<i>ts128x8cm4.lib</i>	<i>Synopsys Model</i>
<i>ts128x8cm4_vhd_stim.v</i>	<i>Verilog Behavioral Model and VHDL Behavioral Model Testbench</i>
<i>ts128x8cm4_vhd_wrapper.v</i>	<i>Verilog Wrapper for VHDL.</i>



# Index

## A

Abort [18](#)  
 Advanced Parameters window [16](#)  
 Automatic Memory Naming [14](#)

## B

Bits in Word [13](#)  
 browser-based tool [5](#)

## C

client-side Java [5](#)  
 Column Mux Option [13](#)  
 Command Line Options [21](#)

## D

Deleting a Component [20](#)  
 Downloading the Files for the Generated Component [18](#)

## E

Editing the Selected Component [19](#)  
 Embed-It!® Integrator software [5](#)  
 Embed-It® Integrator software [5](#)  
 Exit Codes [22](#)

## F

Frequency (in MHz) [13](#)  
 Front-end views [23](#)

## G

Generating a Component [18](#)

## I

Import a Component [18](#)  
 Instance directory [23](#)  
 Integrator Online Account Administrator [9](#)  
 Integrator Online command line client [21](#)  
 Integrator Online™  
   Running the client-side Java version [9](#)  
 Integrator Online™ Benefits [5](#)

Integrator Online™ Interfaces [5](#)

IOL Key [9](#)  
 IOL key [21](#)

## J

JAVA Web Start [5](#)  
 Junction Temperature (C) [14](#)  
 Junction Temperature(C) [14](#)  
 JWS [9](#)

## N

Number of Banks [13](#)  
 Number of Bits in Subword [13](#)  
 Number of Vertical Banks [13](#)  
 Number of Words [13](#)

## O

Operating Points [23](#)  
 operating points [14](#)  
 Operating Voltage (V) [14](#)

## P

Parameters to control instance [16](#)  
 Performing Certain Tasks on Components [19](#)  
 Process Condition [14](#)  
 Process condition [14](#)  
 PVT conditions [14](#)  
 PVT window [14](#)

## R

Read ports [13](#)  
 Redundancy enable [14](#)  
 Running Integrator Online™ Software [5](#)

## S

Server host name and port number [21](#)  
 Signal Metal [14](#)  
 Status Area [14](#), [17](#), [18](#)

**U**

User login name [21](#)

User Name [9](#)

**W**

Working with Components [11](#)

Write ports [13](#)