

# Yealink SIP IP Phones Version 5.1 Change Log

## 1 Introduction

1. Firmware Version: V51
2. Product Name: SIP-T28/T26/T22/T20/T12
3. Release Date: July 30, 2010,

## 2 New Features

1. Added Broadsoft DND&FWD synchronization.
2. Added Broadsoft network conference support.
3. Added Broadsoft redundant server (DNS-SRV) support.
4. Added LDAP function. (T28/T26/T22/T12)
5. Supported EXP39. (T28/T26)
6. Enable SoftKey function configurable. (T28/T26/T22/T12)
7. Added Text-LOGO in T20.
8. Supported EHS36. (T28/T26)

## 3 Optimization

1. Improved Broadsoft BLF List support. (T28/T26/T22/T20)
2. Supported to logout in web configuration page.
3. Enabled to reset the phone to factory setting by long-pressing 'Conf' key. (T12)
4. Enabled to display picture in XML Browser.
5. Enabled to hold the current call when pressing 'hold' key instead of setting up a new call before. (T12).
6. Enabled to be set Always Off/Always On to LCD backlight setting. (T28/T26/T22)
7. Enabled to park a call to another server by 'Call Park'.
8. Enabled the key tone of 'SENT' key configurable, default is enabled.
9. Enabled to receive a busy tone after the call is busy when 'Call Completion' or 'Auto Redial' is enabled.
10. Enable value option of DSSKey-Tran, blind transfer or attend transfer can be configured through it.
11. Added 'prefix' option in DSSKey to auto enter the prefix number and wait to enter the extension number.
12. Improved 'DEL' button to the third SoftKey (from the left to the right) in Dial-up and settings interface. (T12)
13. Modified the arrangement of the softkey to be uniform.
14. Modified the default input method is 'abc' both in search and add contact in phonebook.
15. Optimized TR069 web configuration page.
16. Added 'LDAP' option in DSSKey.
17. Added 'SWAP' SoftKey when the phone has two calls at the same time. (T28/T26/T22/T12)
18. Modified the Advanced mode of Hot Desking to be restored to the previous account after logging out.
19. Supported BLA function. (T20/T22 Line Key)
20. Enabled to have a private talk before conference.

21. Supported to configure Auto Provision on LCD.

## 4 Bug Fixes

1. Fixed the issue that can't send DTMF tone of 'A-D'.
2. Now in Host Desking advanced mode the account will auto log off when other phone override this account.
3. Corrected the parameter of Switzerland busy tone. (T22/T20)

## 5 Instruction

1. Added Broadsoft DND&FWD synchronization.

**Path:** Web Setting Page → Phone → Features

**Instruction:** This function supports the DND&FWD synchronization with server.

**Detail:** Please refer to User Manual of version 51 for detail.

Attend Trans OnHook	Enabled
Feature Key Synchronisation	Disabled
Use Logo	System Logo

2. Added Broadsoft network conference support.

**Path:** Web Setting Page → Account → Advanced

**Instruction:** The Network Conferencing solution is an enterprise-class Meet-Me Conferencing service that utilizes dedicated Conference Server network elements to bridge large numbers of participants together.

**Detail:** Please refer to User Manual of version 51 for detail.

Enable Signal Encode	Disabled
Signal Encode Key	
Conference Type	Local
Conference URI	

3. Added Broadsoft redundant server (DNS-SRV) support.

**Path:** Web Setting Page → Account → Basic

**Instruction:** The DNS SRV allows administrators to use several servers for a single domain, Yealink SIP Phone will ask for a specific service/protocol for a specific domain (the word domain is used here in the strict RFC1034 sense), and get back the available servers.

**Detail:** Please refer to User Manual of version 51 for detail.

Outbound Proxy Server		Port	5060	?
Transport	UDP			?
Backup Outbound Proxy Server		Port	5060	?

Outbound Proxy Server	<input type="text"/>	Port	<input type="text" value="5060"/>	<a href="#">?</a>
Transport	<b>DNS-SRV</b>			<a href="#">?</a>
Backup Outbound Proxy Server	UDP	Port	<input type="text" value="5060"/>	<a href="#">?</a>
NAT Traversal	TCP			<a href="#">?</a>
	TLS			<a href="#">?</a>
STUN Server	<b>DNS-SRV</b>	Port	<input type="text" value="10000"/>	<a href="#">?</a>

4. Added LDAP function. (T28/T26/T22/T12)

**Path:** Web Setting Page → Contacts → LDAP

**Instruction:** LDAP stands for Lightweight Directory Access Protocol which is a client-server protocol for accessing a directory service. LDAP lets you locate organizations, individuals, and other resources such as files and devices in a network, whether on the Internet or on a corporate intranet, and whether or not you know the domain name, IP address, or geographic whereabouts. An LDAP directory can be distributed among many servers on a network, then replicated and synchronized regularly.

**Manual:** <http://www.yealink.com/fae/LDAP Phonebook instruction.rar>

The screenshot shows the Yealink web interface with the 'Contacts' tab selected. Under 'Contacts', the 'LDAP' sub-tab is active. The configuration page includes the following fields:

- LDAP name filter:
- LDAP number filter:
- Server Address:
- Port:
- Base:
- UserName:
- Password:
- Max. Hits(1~32000):
- LDAP name attributes:
- LDAP number attributes:
- LDAP display name:
- Protocol:
- Search Delay(ms)(0~2000):
- LDAP lookup for incoming call:
- LDAP sorting results:
- LDAP lookup for PreDial/Dial:

At the bottom, there are 'Confirm' and 'Cancel' buttons. On the right side, there is a 'NOTE' section with a plus icon.

5. Supported EXP39. (T28/T26)

**Path:** Yealink EXP39 LCD Expansion Module is designed for improving the power and flexibility of the Yealink advanced IP phones SIP-T26P and SIP-T28P.

**Detail:** <http://www.yealink.com/en/view.asp?ClassLayer=90>



## Yealink LCD Expansion Module EXP39

A green, visual and effective assistant

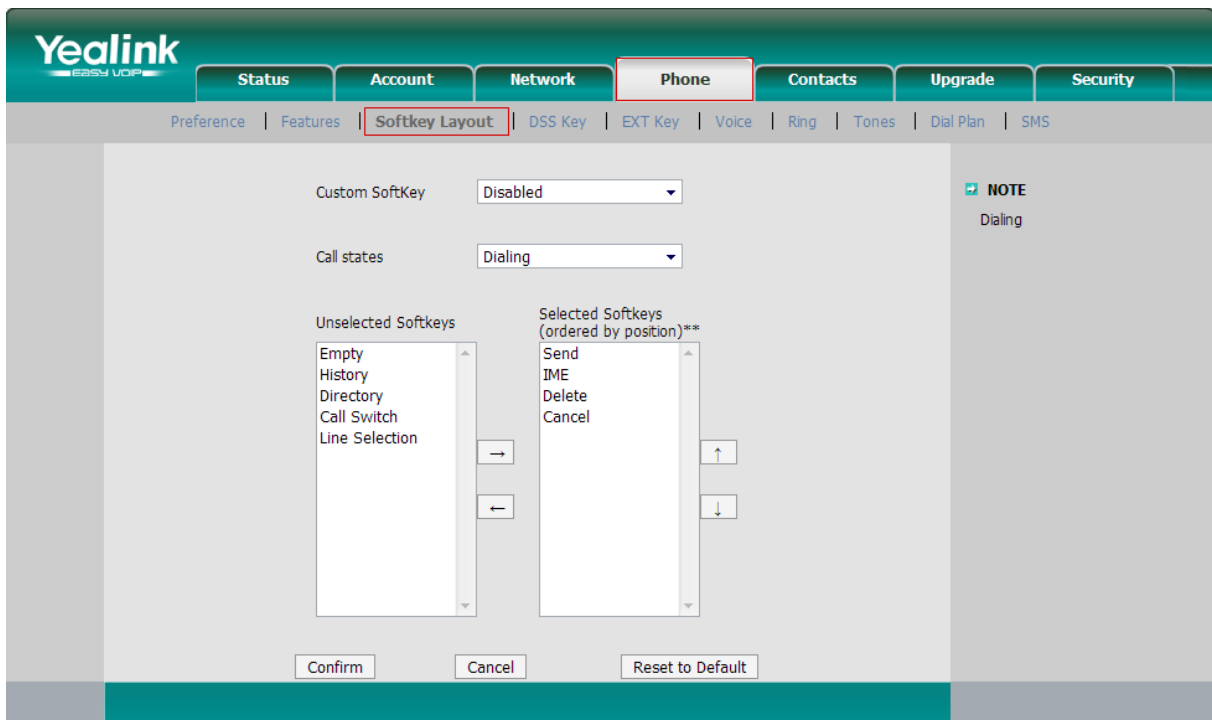
Rich visual experience with 160x320 graphic LCD  
20 physical keys each with a dual-color LED  
20 additional keys through page switch  
Daisy-chain 6 modules up to 120 keys  
Supports BLF/BLA, speed dialing, call pickup, etc.

6. Enable SoftKey function configurable. (T28/T26/T22/T12)

**Path:** Web Setting Page → Phone → Softkey Layout

**Instruction:** Now the Softkey that display different call states is configurable.

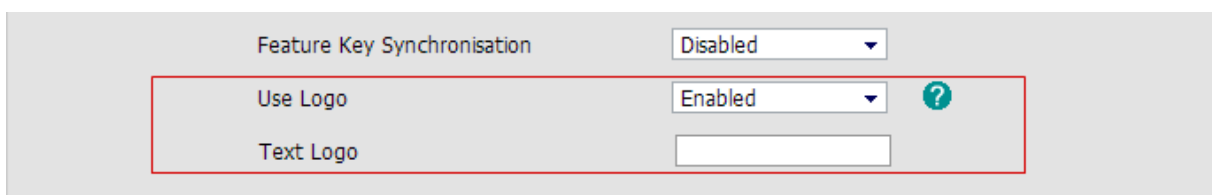
**Detail:** Please refer to User Manual of version 51 for detail.



7. Added Text-LOGO in T20.

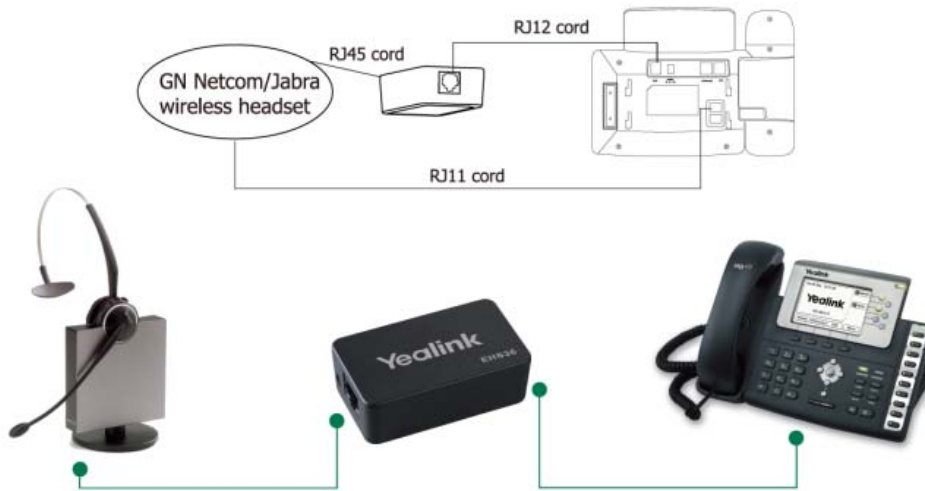
**Path:** Web Setting Page → Phone → Features

**Instruction:** T20 supported Text Logo, the logo display on the LCD could be edited by ourselves. When the Use Logo select Enable, The Text Logo option would appear to be edited.



8. Supported EHS36. (T28/T26)

**Instruction:** The new and advanced Yealink Headset Adapter EHS36 provides the technical interface between your Yealink T28P or T26P telephone and a compatible wireless headset. It is approved for use with major manufactures Plantronics and Jabra wireless models.

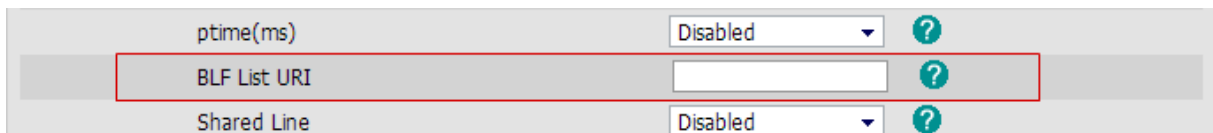


9. Improved Broadsoft BLF List support. (T28/T26/T22/T20)

**Path:** Web Setting Page → Account → Advanced

**Instruction:** BLF List is a way of grouping the extensions that are being monitored together. It allows the extensions being monitored to be controlled by the server, as you only configure a group name (eg sales) and the server then pushes out the actual extension details to the phone. It also reduces the messaging overhead required to support multiple BLFs, as you only need to maintain a single SIP dialog for the group, and not one for each BLF key.

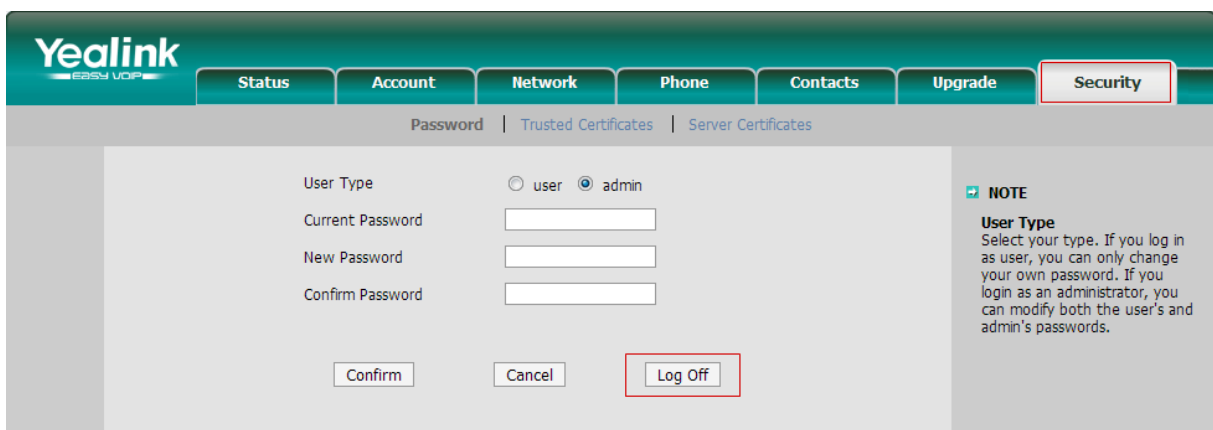
**Detail:** Please refer to User Manual of version 51 for detail.



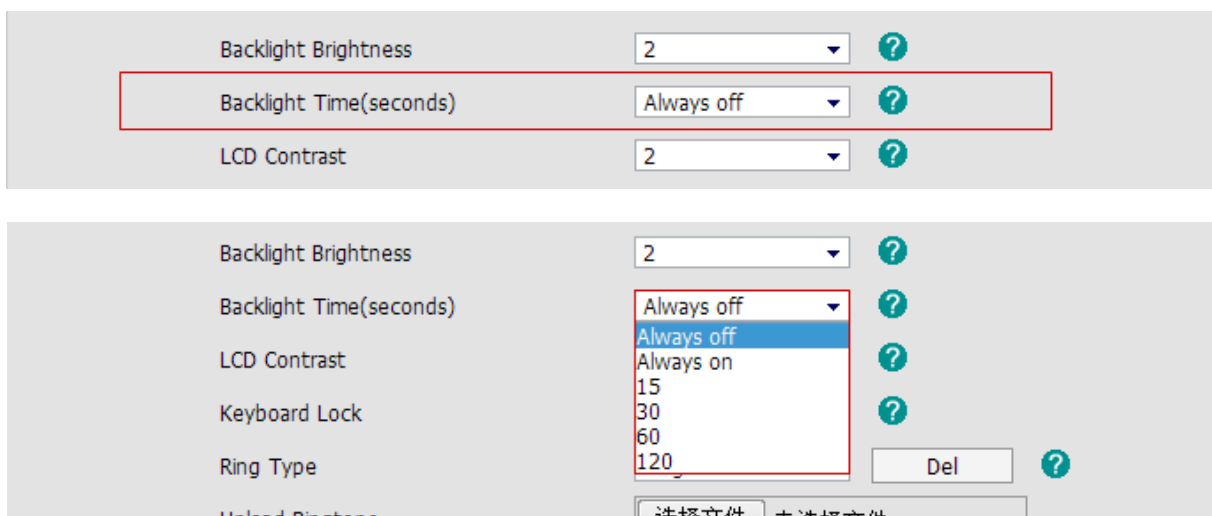
10. Supported to logout in web configuration page.

**Path:** Web Setting Page → Security

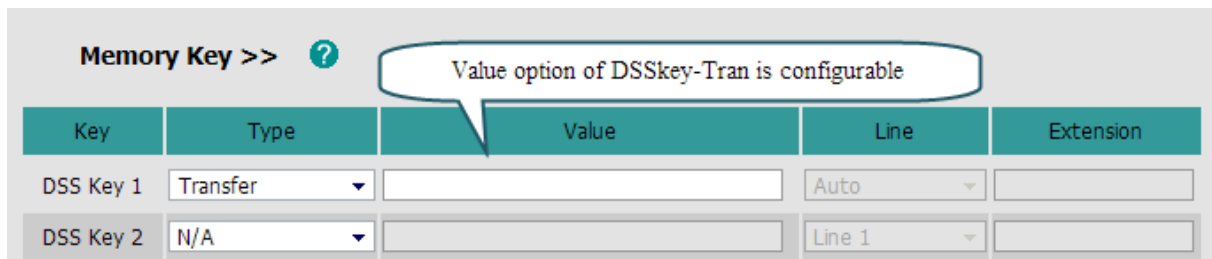
**Instruction:** Added a 'Log Off' button in the web configuration page, and supported logout by click this button.



11. Enabled to reset the phone to factory setting by long-pressing ‘Conf’ key. (T12)  
**Instruction:** For Yealink T12, after long-pressing ‘Conference’ key would lead to reset to phone to factory.
12. Enabled to display picture in XML Browser.  
**Instruction:** Now Yealink SIP Phone supported to display picture in XML Browser.
13. Enabled to hold the current call when pressing hold key instead of setting up a new call before. (T12).  
**Instruction:** When Yealink T12 during a call, could hold this call by pressing ‘hold’ key, and if user want to set up a new call, you could press the number directly.
14. Enabled to be set Always Off/Always On to LCD backlight setting. (T28/T26/T22)  
**Path:** Web Setting Page → Phone → Preference  
**Instruction:** Added two select options in the Backlight Time options and now supported the LCD backlight Always Off or Always On.



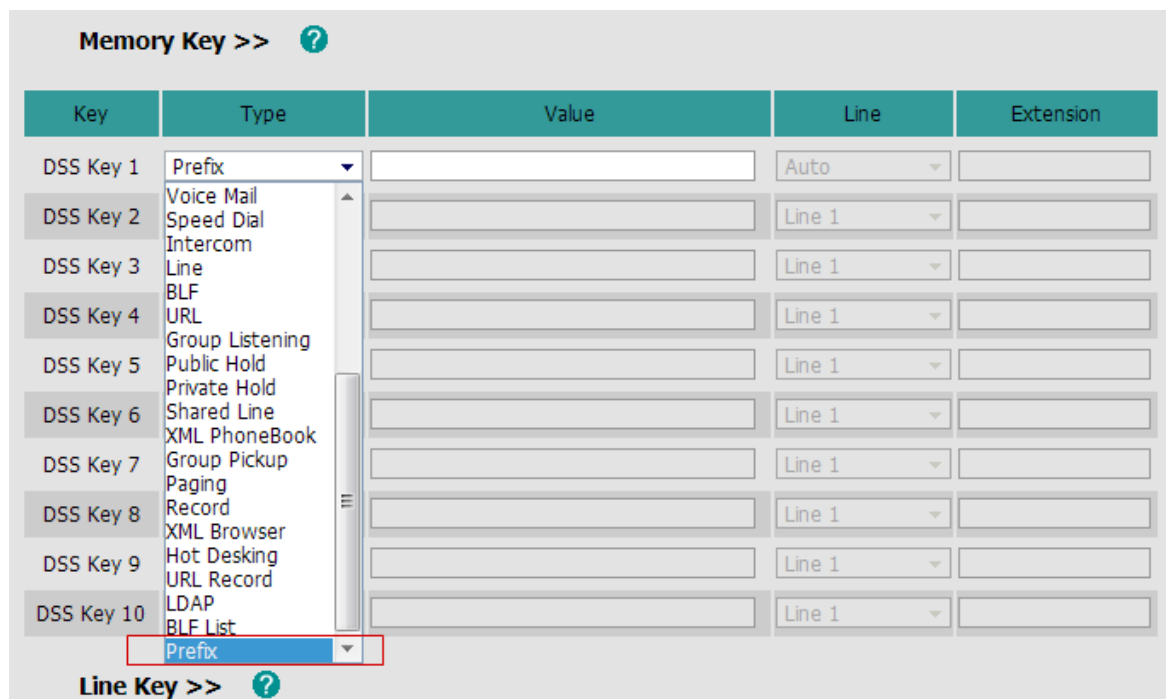
15. Enabled to park a call to another server by ‘Call Park’.  
**Instruction:** The ‘Call Park’ of DSSKey could select other account, so that could park the call to other server.
16. Enabled the key tone of ‘SENT’ key configurable, default is enabled.  
**Path:** It could change this setting through Auto Provision.  
**Instruction:** Enabled the key tone of ‘SENT’ key configurable, default setting is enabled.
17. Enabled to receive a busy tone after the call is busy when ‘Call Completion’ or ‘Auto Redial’ is enabled.  
**Instruction:** When ‘Call Completion’ or ‘Auto Redial’ is enabled, user will receive a busy tone when the call is busy.
18. Enable value option of DSSkey-Tran, blind transfer or attend transfer can be configured through it.  
**Path:** Web Setting Page → Phone → DSS Key  
**Instruction:** Now the value option of Transfer in the DSSKey is configurable. It is Blind Transfer when there is a value.



19. Added 'prefix' option in DSSKey to auto enter the prefix number and wait to enter the extension number.

**Path:** Web Setting Page → Phone → DSS Key

**Instruction:** Added 'prefix' option in DSSKey. By pressing this option button, Yealink phone would auto enter the prefix number that was stteded, and waiting for user to enter the extension number.



20. Improved 'DEL' button to the third SoftKey (from the left to the right) in Dial-up and settings interface. (T12)

**Instruction:** The 'DEL' was arranged to fixed in the SoftKey3 in different status.

21. Modified the arrangement of the Softkey to be uniform.

**Instruction:** Arranged some function to fixed SoftKey in different states, for example the 'Transfer' key will always in the Softkey2.

22. Modified the default input method is 'abc' both in search and add contact in phonebook.

**Instruction:** Now the default input method is 'abc' both in search and add contact in phonebook.

23. Optimized TR069 web configuration page.

**Instruction:** TR069 web configuration page of TR069 was optimized. (TR069 is an optional function)

24. Added 'LDAP' option in DSSKey.

**Instruction:** Added the 'LDAP' option in DSSKey.

- 
25. Added 'SWAP' SoftKey when the phone has two calls at the same time. (T28/T26/T22/T12)  
**Instruction:** There is a 'SWAP' softkey when the phone has two calls at the same time. The users can switch call thought this softkey.
26. Modified the Advanced mode of Hot Desking to be restored to the previous account after logging out.  
**Instruction:** Yealink support the advanced mode of Hot Desking to be restored to the previous account after logging out.  
**Manual:** [http://www.yealink.com/fae/How to use Hot Desking on Yealink phones.rar](http://www.yealink.com/fae/How%20to%20use%20Hot%20Desking%20on%20Yealink%20phones.rar)
26. Supported BLA function. (T20/T22 Line Key)  
**Instruction:** T20 and T22 supported to configure the Line Key to BLA function.
27. Enabled to have a private talk before conference.  
**Instruction:** When user invites another number into conference by pressing 'conf' key, user will have a private talk with the third number, then press 'conf' key again to build a conference.
28. Supported to configure Auto Provision on LCD.  
**Path:** LCD → Menu → Settings → Advanced Settings → Auto Provision  
**Instruction:** Now support to configure Auto Provision on LCD.