



Stainless Steel Grated Urinals



L Shaped Stainless Steel Grated Urinal



1800 mm Stainless Steel Grated Urinal

Installation and Operation Manual: Stainless Steel Grated Urinal

This manual is for the following models of Urinals:

Straight Model Code:

SPPL.UR.G.T.L.xxxx
SPPL.UR.G.T.R.xxxx
SPPL.UR.G.T.C.xxxx
SPPL.UR.G.T.2.xxxx
SPPL.UR.G.R.L.xxxx
SPPL.UR.G.R.R.xxxx
SPPL.UR.G.R.C.xxxx
SPPL.UR.G.R.2.xxxx

Stainless Steel Grated Urinal

Urinal – Grated – Top Entry – Left Waste – Standard Length
Urinal – Grated – Top Entry – Right Waste – Standard Length
Urinal – Grated – Top Entry – Centre Waste – Standard Length
Urinal – Grated – Top Entry – Two Wastes – Standard Length
Urinal – Grated – Rear Entry – Left Waste – Standard Length
Urinal – Grated – Rear Entry – Right Waste – Standard Length
Urinal – Grated – Rear Entry – Centre waste – Standard Length
Urinal – Grated – Rear Entry – Two Wastes – Standard Length

L Shape Model Code:

SPPL.UR.G.L.T.xxxx.yyyy.VAR

Stainless Steel Grated Urinal

Urinal – Grated – L Shape - Top Entry – Length of each side.
A Grated Urinal Order Form must be completed to capture the waste positions and other variables.

U Shape Model Code:

SPPL.UR.G.U.T.xxxx.yyyy.zzzz.VAR

Stainless Steel Grated Urinal

Urinal – Grated – U Shape - Top Entry – Length of each side
A Grated Urinal Order Form must be completed to capture the waste positions and other variables.

Standard Lengths of Grated Urinal
in mm

0900, 1200, 1500, 1800, 2400, 2700, 3000, 3300, 3600, 3900 and 4100.

Due to continuous product research and development, the information contained herein is subject to change without notification.



Stainless Steel Grated Urinals

Contents

Important:	3
Recommendations:	3
Responsibility:	3
Features:	3
Referenced Australian Standards:	4
Grated Urinal Installation:.....	5
Water Supply Requirements:.....	6
Cleaning Instructions:	6
Recommended cleaning of all stainless steel.....	6
DO.....	6
DON'T.....	7
Warranty:	7
Enquiries and Complaints:	7
Automatic Flushing Devices:	8
Sanitron Auto Flush.....	8
Setting up Device:.....	8
Schematic:	9
Other Auto Flushing Devices:	10
Galvin Engineering Urinal Flushing Device.	10
Enware Urinal Flushing device.	10
Zip Urinal Flushing device.	10
Example Grated Urinal Order Form	11

Due to continuous product research and development, the information contained herein is subject to change without notification.

Stainless Steel Grated Urinals

Important:

Recommendations:

Upon receiving a Stoddart product, inspect immediately for any visible signs of shipping damage and notify the carrier immediately. When removing the product from its packing, be careful not to dent or scratch outer surface. Any concealed damage should be noted and reported immediately to the freight carrier. A claim should be filed with carrier if appropriate.

Responsibility:

Stoddart thoroughly inspect all products they are despatched from our factory. Stoddart Manufacturing will not accept responsibility for shipping damage. The Plumber is responsible to ensure that the system is installed in accordance with all specific requirements of local codes and regulations (including AS 3500). If questions or complications should arise during the installation of a Stoddart product that cannot be solved using the accompanying instructions, please contact our offices or local representatives.

*Note: It is the Plumbers responsibility to install this product in accordance with **AS3500**.*

Scope:

This product is design to be used in public places where it is required to be vandal resistant. The product is manufactured to the requirements of AS1172.1 and associated reference standards.

Features:

- The Grated urinal from Stoddart Manufacturing has full depth sides for superior hygiene.
- The urinal has a concealed vandal resistant sparge that wraps around onto the sidewalls to ensure proper wash with each flush.
- Stoddart grated urinal is fully supported on legs for easy installation (do not fill void under trough).
- The unit can be set into a floor; recessed so top grate is flush with finished floor level or set on floor; fitted with an optional stainless steel front kick panel.
- Grate is high strength, slip resistant, hygienic Stainless Steel. Grate is hinged for cleaning access.
- All internal corners have large radius for cleaning ease and effective drainage.
- Fall to waste of 1:100 ensures proper drainage.
- Compressed fibre cement backing provides "anti-drum" noise suppression.
- Optional Freestanding end panels are available.
- Long units can be made modular to avoid onsite welding.
- Top edge can have either a returned edge or a tile edge.

Due to continuous product research and development, the information contained herein is subject to change without notification.



Stainless Steel Grated Urinals

Referenced Australian Standards:

Markings	Unit Marking to include Maker's Name, Model identification,	AS 3982-1996
Urinal Materials	Stainless Steel	AS 3982-1996
Urinal Outlet Dimensions	Shall comply with the applicable clauses	AS 3982-1996
Urinal Water Seal	Shall comply with the applicable clauses	AS 3982-1996
Urinal Tests	Shall comply with the applicable clauses	AS 3982-1996
Flushing Valves		MP52-Spec 2
Drainage		AS3500
Installations	Warranty / Installation instructions shall be provided by the manufacture	AS3500

Due to continuous product research and development, the information contained herein is subject to change without notification.

Stainless Steel Grated Urinals

Grated Urinal Installation:

A qualified plumber must install all Urinals. (Stoddart can deliver urinals to site, and where required can site weld large urinals together inside the room.)

1. Preparation;
 - a. Place the urinal upright on a level floor and measure the distance from the underside of the trough (at the waste) to floor.
 - b. Mark the floor where the urinal legs will be positioned & ensure surface is flat and level.
 - c. Position & fix Z-clips to wall for returned edge type urinals. Z-clip must hold top edges of urinal to wall but Urinal must not hang off Z-clip.
2. Prepare sewer waste pipe;
 - a. Cut Sewer pipe to a height to ensure that when the urinal is put into position, the pipe is clear of the underside of the urinal trough. You must have **clearance between sewer pipe and the underside of urinal trough**. (~15mm)
 - b. Place the rubber cap supplied over the sewer and check that it can be pushed fully into position. (Plumber may use alternative caps or sealing methods). You may have to chip the some concrete floor away from around pipe.
3. Set urinal into place;
 - a. Place urinal over waste and lower onto floor so that urinal support feet are level and back edges fit into Z-clips.
 - b. Check that the front edge of the urinal is level.



- c. Check that the top edge of the rear of the urinal is level and
- d. Check that the top edges of the side walls are level (front to back).



- e. **DO NOT use sparge cover as level reference.**
- f. **Check that there is at least 1:100 fall from all points to the waste**



Due to continuous product research and development, the information contained herein is subject to change without notification.



Stainless Steel Grated Urinals

g. Check that the base of the urinal is not "Popped up".

Push down to the waste to check there is still free play over the waste.

4. Fix Urinal to wall;

a. For Urinals with Tile Edge;

- i. Ensure urinal is against the wall and still in level position,
- ii. drill through the tiled edge and then fix to studs in walls.

Please note

- that if the wall is not flat, "Z" clips are not recommended for Urinals over 3 meters long.
- The Grated Urinal is designed to stand on its legs. The legs must be set on a flat surface.
- Mortar mix or cement is not required under the urinal trough but a shovel full may be applied if required to help seat legs.

Check that the urinal drains;

Pour water into the urinal & check it drains fully. If not, re-check the levels and pack under feet as required. Ensure waste is pressed down and the dome cover allows free drainage.

Water Supply Requirements:

All Stoddart Urinals that are coupled with a flush valve require the following:

- Water supply pipe must be 20mm diameter minimum.
- Water pressure 250kpa minimum to 500kpa maximum.
- Flow to the valve face must be 1.0-1.5 litres/sec for effective flushing.
- An inline water filter should be fitted to protect the flushing valve.

All Stoddart Urinals that are coupled with a cistern require the following:

- Cistern chosen should meet relevant codes & water efficiency standards.
- Flush pipe from cistern to urinal should be 40mm NB.
- Flush pipe should be as straight as possible.

Cleaning Instructions:

Recommended cleaning of all stainless steel.

Using a soft cloth that has been dampened with warm soapy water best cleans exterior or interior, stainless steel. Rinsing with clean water and drying with a soft cloth should follow this. Do not use steel wool, coarse fabrics or abrasive polishing solutions, as they will permanently damage the finish. Light rust marks or stains may be effectively removed by moistening a soft cloth with 10% solution of sodium citrate, sprinkling on a light layer of whiting and rubbing in the direction of the grain. Thorough rinsing and drying with a soft cloth should follow this. If desired, the stainless steel may be waxed with a good quality non-abrasive liquid or paste automobile wax.

Remember these does and don'ts

DO...

Wash regularly with soapy water or detergent using a clean cloth and, if necessary, a soft bristle brush.

Remove non-washable deposits using an approved cleaner.

Clean in one direction only, along the original polish lines.

Rinse well with clean water and wipe dry.

Due to continuous product research and development, the information contained herein is subject to change without notification.



Stainless Steel Grated Urinals

DON'T...

Use steel wool or metallic scrapers to remove non-washable deposits.
Allow dirt to accumulate or to dry out and harden.
Use cleaners containing harsh abrasives or high bleach contents.

Stoddart will not accept any responsibility and our warranty will be void if bleach or acidic based cleaning agents are used to clean our stainless steel products. If any of the above cleaners must be used, it is imperative that the product is thoroughly washed and rinsed after cleaning with warm soapy water, otherwise brown oxidization will appear on the stainless steel surface.

Important: Never use harsh or abrasive cleaners on the product, as it is stainless steel. Do not use chlorinated or bleached water.

Warranty:

Upon receiving a Stoddart product, inspect immediately for any visible signs of shipping damage and notify the carrier immediately. When removing the product from its packing, be careful not to dent or scratch outer surface. Any concealed damage should be noted and reported immediately to the freight carrier. A claim should be filed with carrier promptly if appropriate. Stoddart Manufacturing will not accept responsibility for shipping damage. The Standard Terms and Conditions of Sale clearly details Standard Warranty Policy. Plumbing Products offer additional conditions as follows:

- Warranty on materials and labour is limited to 12 months from date of installation.
- The Warranty does not cover damage caused by abuse, misuse or improper application or improper installation.
- Warranty Claims must be submitted in writing to Stoddart Manufacturing within 14 days of observation of fault.
- Items may be returned to Stoddart's Factory by the Customer for warranty inspection. For valid warranty claims, Stoddart will repair or replacement the item and return it to the Customer promptly.
- For installed products, Photos must accompany the Warranty Claim for effective consideration.
- If a site visit is required to conduct warranty repairs, such work will be carried out during normal business hours e.g. 8am to 5pm. Mon to Fri.

Enquiries and Complaints:

Should you have any queries or complaints please contact the Stoddart Plumbing Division on:

07 33455011 or
0412 259 820 Luke Simpson,
07 33440929 Ed Van Daalen
07 33440979 Anton Young

Due to continuous product research and development, the information contained herein is subject to change without notification.

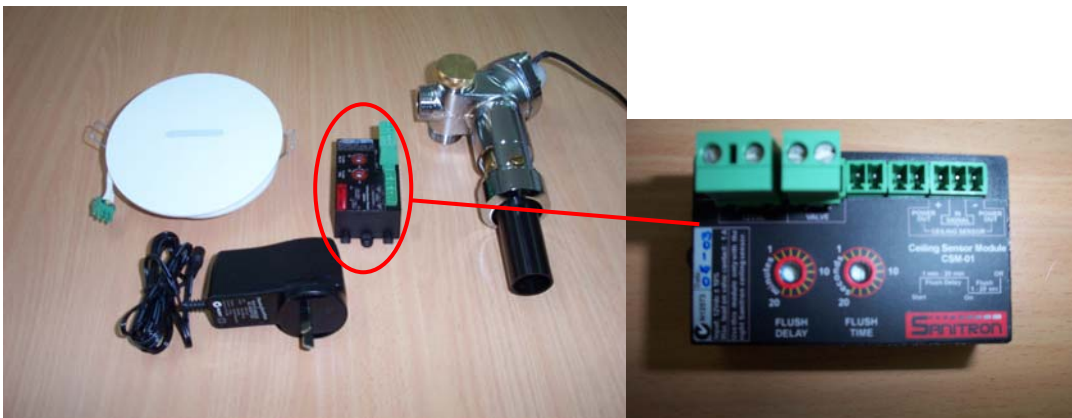
Stainless Steel Grated Urinals

Automatic Flushing Devices:

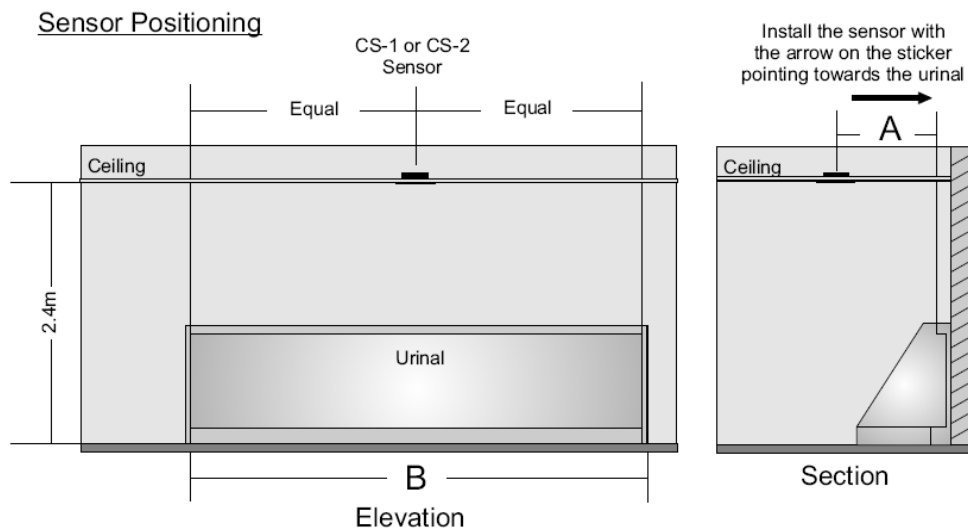
There are many brands of automatic urinal flushing devices available. The following is one commonly used example. It is critical that the flushing valve and the flush pipe allow the water to flow with sufficient velocity to fill the sparge pipe and provide full washing of the back and sides of the urinal.

Sanitron Auto Flush.

The Sanitron Auto Urinal Flush is a mains powered passive infrared detection system that automatically flushes stainless steel urinals. It comes complete with sensor, control module, 20mm solenoid valve with air brake, power pack and pipe size adaptor.



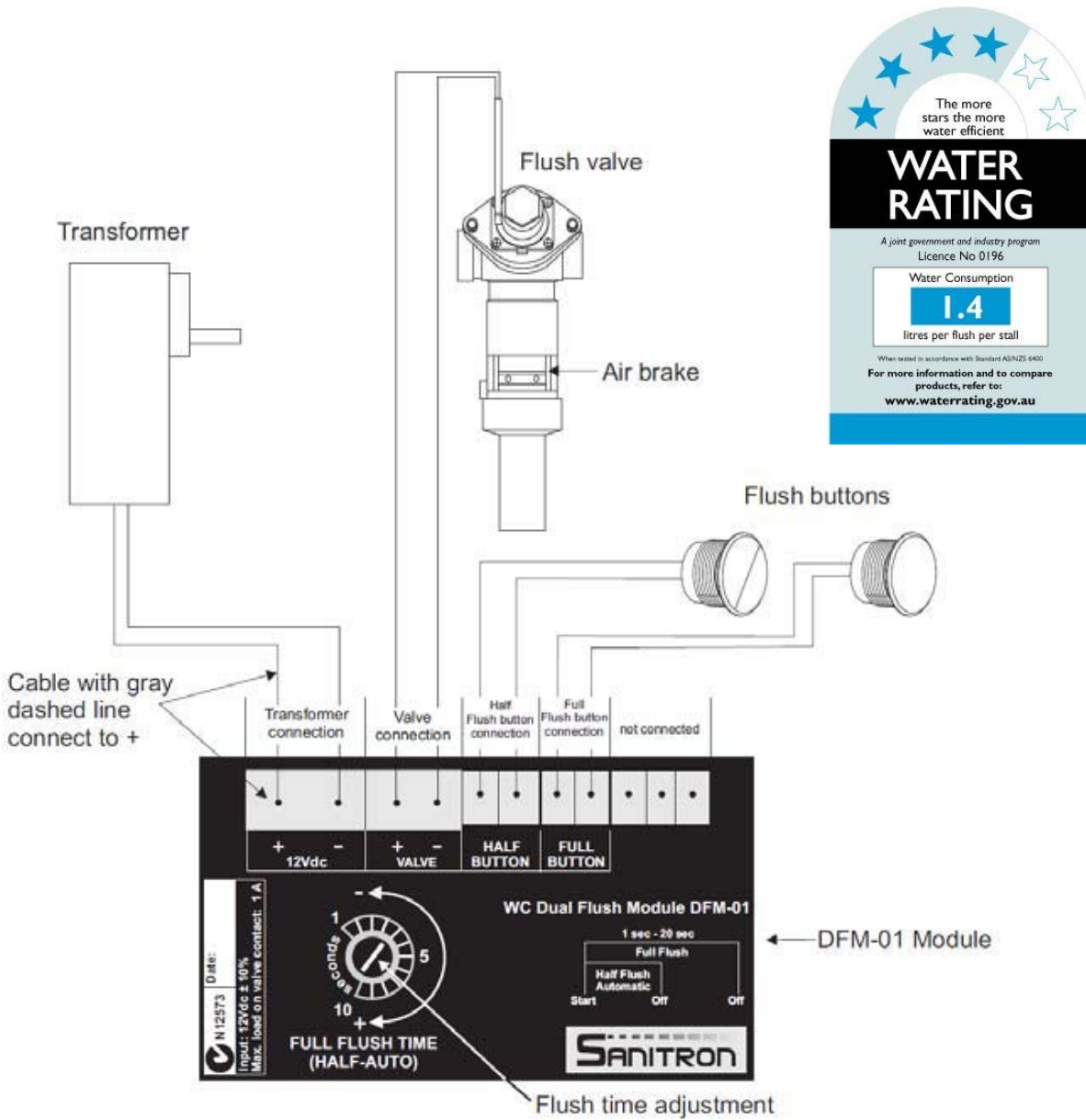
Setting up Device:



Due to continuous product research and development, the information contained herein is subject to change without notification.

Stainless Steel Grated Urinals

Schematic:



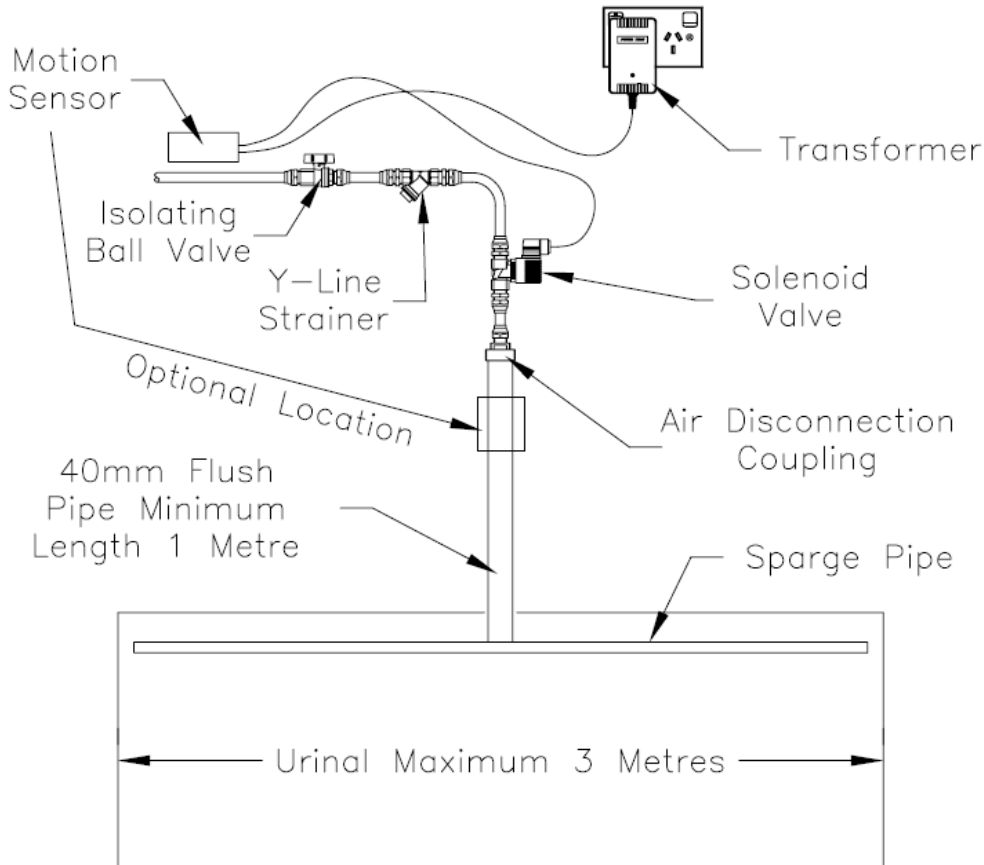
Due to continuous product research and development, the information contained herein is subject to change without notification.

Stainless Steel Grated Urinals

Other Auto Flushing Devices:

Galvin Engineering Urinal Flushing Device.

Refer to www.Galvinengineering.com



Enware Urinal Flushing device.

Refer to <http://www.enware.com.au/estore/category.aspx?id=2878>

Zip Urinal Flushing device.

<http://www.zipindustries.com/media/123689/zip-flushmaster-pan-or-urinal-flush-system-spec-sheet-may-09.pdf>

Due to continuous product research and development, the information contained herein is subject to change without notification.

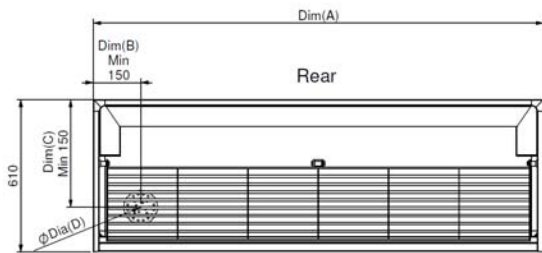
Stainless Steel Grated Urinals

Example Grated Urinal Order Form

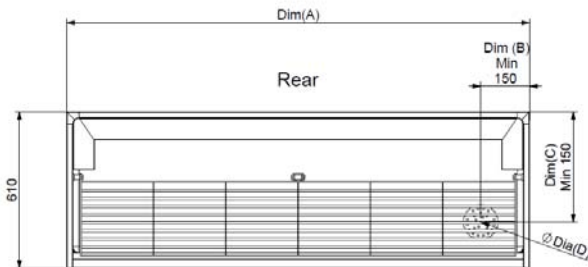
Please complete all the items in the table below.

Cross out the drawing that doesn't apply.

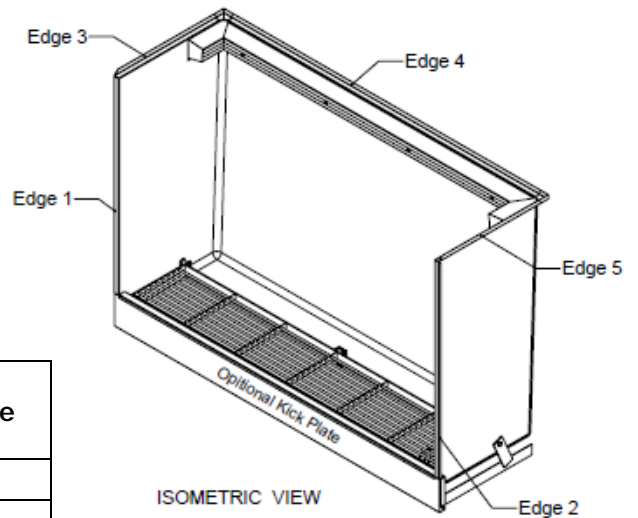
Waste at Left End Measured from Left End (Dim B_L)



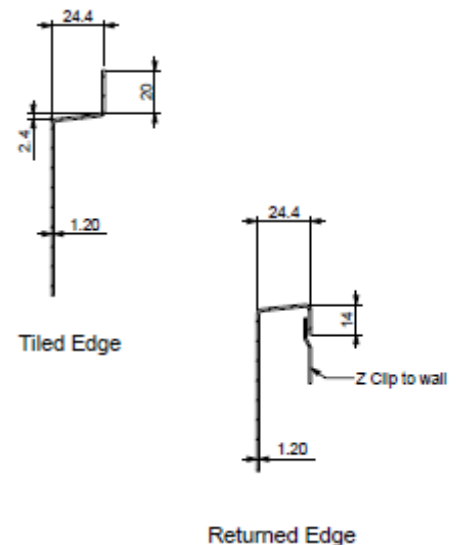
Waste at Right End Measured from Right End (Dim B_R)



Models SPPL.UR.Gzy.xxxx
 :
 SPPL Standard Plumbing Product
 UR.G Urinal Grated
 z Top entry water supply
 Rear entry water supply
 y L = Left waste
 R = Right Waste
 C = Centre Waste
 2 = 2 wastes (1 each end)
 xxxx = lengths
 Std lengths = 900,1200,1500,1800,2400,
 2700,3000,3300,3600,3900,4100



EDGE DETAILS



Detail	Dimension (mm) / Code Letter
Overall Length (Dim A)	
Waste Position from Left End (Dim B _L)	
Waste Position from Right End (Dim B _R)	
Waste Position off Rear Wall (Dim C)	
Waste Diameter (Dim D) 50 / 65 / 75 / 100	
Edge 1 Detail (T= Tiled or R =Returned)	
Edge 2 Detail (T= Tiled or R =Returned)	
Edge 3 Detail (T= Tiled or R =Returned)	
Edge 4 Detail (T= Tiled or R =Returned)	
Edge 5 Detail (T= Tiled or R =Returned)	
Free Standing End? (L=Left, R =Right,	
Include SS Kick Plate (Yes / No)	
Water Inlet Type (T=Top, R	Quantity?
Water Inlet - Top Entry size (25 / 32 / 38 mm)	
- Rear Entry size is always 25mm	
For Multiple or custom Water Inlet Positions – sketch positions on plan and dimensions from ends (mm)	
Approved by:	

Due to continuous product research and development, the information contained herein is subject to change without notification.