

INTRODUCTION

The CGO SteadyGrip™ is a ground handle designed to extend the CGO-GB 3-axis gyro stabilized camera from the sky to the ground, allowing you to capture amazing action shots easier than ever before. The camera pitch controller allows precise camera angle control on the go using your mobile device as a display. The SteadyGrip's ergonomic design is capable of holding up to a 6.4 inch mobile device.

The SteadyGrip™ paired with Yuneec's CGO2-GB Full-HD 3-Axis Stabilized Gimbal Camera System allows you to capture fluid footage right out of the box. Please take the time to read through this entire instruction manual for more information on safety, battery charging, camera controls and more before filming your first hit video. Please also visit www.Yuneec.com for additional information including product updates, bulletins, videos and more.

CGO-2GB (available separately) is an innovative combination of 3-axis brushless gimbal, camera and digital video downlink.

The Self-Stabilizing gimbal makes it possible to capture amazing photographs and video footage for an array of uses. And the built-in digital video link delivers streaming video to 5.8GHz WiFi compatible iOS® and Android™ equipped devices including smart-phones and tablets as well as YUNEEC Personal™ Ground Stations.

WINDOWS SYSTEM REQUIREMENTS

Windows XP (Service Pack 2 or later) or Vista
3.2GHz Pentium 4 or faster
Minimum 4GB of system RAM

MAC SYSTEM REQUIREMENTS

Mac OS® X 10.4.11 or later
2.0GHz Intel Core Duo or faster
Minimum 4GB of system RAM

CGO2 APP COMPATIBLE DEVICES

Android:
Mobile Devices with 5.8GHz Support

Apple iOS:
phone4s
iphone 5,5c/5s,6,6+
ipad mini / mini+ /3/4.

SPECIFICATIONS

CGO STEADYGRIP™

Height: 223mm (8.78 in)
Depth (front to back): 182mm (7.17 in)
Width: 70mm (2.76 in)
Weight (without gimbal/batteries): 200g (7.05 oz)
Required Batteries: 2850mAh Energizer® 6x 1.5V AA Batteries (Sold Separately)
Runtime: 48-64 minutes (depending on usage)

CGO2-GB

Height: 115mm (4.5 in)
Width: 74mm (2.9 in)
Depth: 135mm (1.4 in)
Weight: 185g (6.5 oz)
Video Resolution: Full-HD 1080p 60, 50 or 48 fps
Photo Resolution: 12 Megapixels
Transmission Distance/Range: Up to 600m (1970 ft) depending on receiving device and environment
Transmission Band: 5.8GHz
Storage (memory): microSD Class 10 up to 128GB

NOTICES AND WARNINGS

IMPORTANT NOTE: All safety precautions and warnings, instructions, warranties and other collateral information is subject to change at the sole discretion of Yuneec. For the most up-to-date information please visit the corresponding product page at www.Yuneec.com or contact the nearest Yuneec office or authorized distributor.

The following special language terms are used throughout the product literature to indicate various levels of potential harm when operating this product:

NOTICE: Procedures, which if not properly followed, create a possibility of property damage and/or little to no possibility of injury.

CAUTION: Procedures, which if not properly followed, create the probability of property damage and/or a possibility of serious injury.

WARNING: Procedures, which if not properly followed, create the probability of property damage, collateral damage and/or serious injury or create a high probability of superficial injury.

WARNING: Read the ENTIRE instruction manual to become familiar with the features of the product before operating. Failure to operate the product correctly can result in damage to the product, property and/or cause serious injury.

WARNING: This is a sophisticated consumer product. It must be operated with caution and common sense, and requires some basic mechanical ability. Failure to operate this product in a safe and responsible manner could result in damage to the product, property and/or cause serious injury. This product is not intended for use by children without direct adult supervision. Do not use with incompatible components or alter this product in any way outside of the instructions provided by Yuneec. The instruction manual contain instructions for safety, operation and maintenance. It is essential to read and follow all the instructions and warnings prior to assembly, setup and/or use in order to operate the product correctly and avoid damage or serious injury.

AGE RECOMMENDATION: NOT FOR CHILDREN UNDER 14 YEARS. THIS IS NOT A TOY.

GENERAL SAFETY PRECAUTIONS AND WARNINGS

WARNING: Failure to use this product in the intended manner as described in instruction manual can result in damage to the product, property and/or cause serious injury. This product is not a toy! If misused it can cause serious bodily harm and damage to property.

WARNING: As the user of this product you are solely and wholly responsible for operating it in a manner that does not endanger yourself and others or result in damage to the product or the property of others.

Always allow CGO2-GB and SteadyGrip™ to initialize properly by setting the SteadyGrip™ on a flat and stable surface prior to switching it on and allowing the SteadyGrip™ and CGO2-GB to initialize properly which sometimes takes about 4-8 seconds.

Always operate your SteadyGrip™ in a respectful and safe manner.

Do not attempt to operate your equipment in areas with potential magnetic and/or radio interference including areas nearby broadcast towers, power transmission stations, high voltage power lines, etc.

FCC INFORMATION

This device complies with part 15 of the FCC rules. Operation is subject to the following two conditions: (1) This device may not cause harmful interference, and (2) this device must accept any interference received, including interference that may cause undesired operation.

CAUTION: Changes or modifications not expressly approved by the party responsible for compliance could void the user's authority to operate the equipment.

This product contains a radio transmitter with wireless technology which has been tested and found to be compliant with the applicable regulations governing a radio transmitter in the 5.8GHz frequency range.

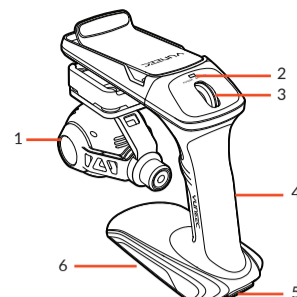
Antenna Separation Distance:

Maintain a separation distance of at least 50mm (2 in) between your body (not including your fingers, hands and wrists) and the antennas to meet the RF exposure safety requirements determined by FCC regulations. Holding the SteadyGrip™ by the ergonomic handle with your arm straight out in front of you will provide adequate antenna separation distance.

OVERVIEW

CGO SteadyGrip™ Action Ground Handle for CGO™ Series Camera

1. CGO2-GB
2. Main Status LED
3. Pitch Control Roller Wheel
4. Rubberized Ergonomic Grip
5. On/Off Switch
6. 6AA Battery Compartment



BATTERY WARNINGS AND USAGE GUIDELINES

WARNING: Alkaline Batteries May explode or leak, and cause burn injury if recharged, disposed of in fire, mixed with a different battery type, inserted backwards or disassembled. Replace all batteries at the same time. Do not carry batteries loose in your pocket or purse. Do not remove the battery label.

WARNING: All instructions and precautions must be read and followed exactly and you must follow instructions of the battery manufacturer.

WARNING: procedures, which if not properly followed, create the probability of property damage, collateral damage and serious injury or create a high probability of superficial injury.

Failure to exercise care while using this product and comply with the following conditions and guidance could result in product malfunction, excessive heat, fire, property damage, and ultimately injury. Lithium Ion batteries are not toys. For the purpose of the document Li-Ion, Li-Po, Li-Fe, NiCd or NiMH batteries will be described as "Batteries".

Handling and Storage:

- Never alter, puncture or impact Batteries or related components.
- Do not directly connect the terminals with metal objects. This will short-circuit Batteries, resulting in heat and electrical discharge.
- Never store loose Batteries together, the Batteries' terminals may contact one another causing a short circuit.
- Never expose Batteries to extreme temperatures or direct sunlight.
- Always disconnect Batteries when not in use.

Before the First Charge:

- Ensure batteries are not damaged, as this may cause a short circuit of fire. Charging
- Always refer to your charger's manual to ensure safe operation.
- Always charge Batteries in an open area away from flammable materials, liquids and surfaces.
- Never charge Batteries that are hot to the touch (above 120°F)

If at any time Batteries become damaged, hot, or begin to balloon or swell, discontinue charging (or discharging) immediately. Quickly and safely disconnect the charger. Then place the Batteries and/or charger in a safe, open area away from flammable materials in an approved Li-Po bag to observe. After one hour, remove the Batteries from service. DO NOT continue to handle, attempt to use, or ship the Batteries. Failure to follow these procedures can cause damage to Batteries, personal property or cause serious injury. Damaged or swollen Batteries can be unstable and very hot. DO NOT touch batteries until they have cooled. Dispose of batteries in the manner required by your city, county, state or country. Contact the appropriate Yuneec Product Support Office to speak to a service technician for more information.

In the event of fire, a Class D, dry chemical fire extinguisher must be used then batteries must be placed inside of an approved Li-Po bag.

Additional Guidelines and Warnings:

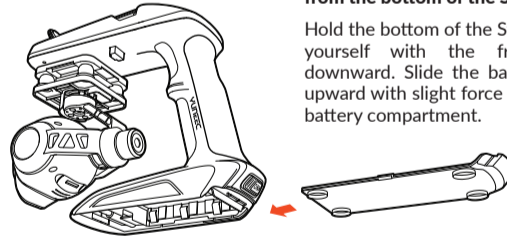
- In the event of a crash, always quickly and safely disconnect and remove Batteries from the model. Then follow the previously listed safety procedures.
- If the internal contents of Batteries come into contact with your skin, wash the affected area(s) with soap and water immediately. If it comes into contact with your eye(s), flush them with generous amounts of water for 15 minutes and seek immediately medical attention.

INSTALLING THE AA BATTERIES

WARNING: Alkaline Batteries May explode or leak, and cause burn injury if recharged, disposed of in fire, mixed with a different battery type, inserted backwards or disassembled. Replace all batteries at the same time. Do not carry batteries loose in your pocket or purse. Do not remove the battery label.

STEP 1) Remove the Battery Cover / Door from the bottom of the SteadyGrip™

Hold the bottom of the SteadyGrip™ toward yourself with the front part facing downward. Slide the battery cover / door upward with slight force and inspect the AA battery compartment.



STEP 2) Install 6x AA Batteries

For long life and extended run time, we recommend Energizer® 1.5V AA Batteries which are known to have 2,850mAh of

stored energy. The SteadyGrip™ will run for approximately 48-64 minutes depending on the gravity of usage.

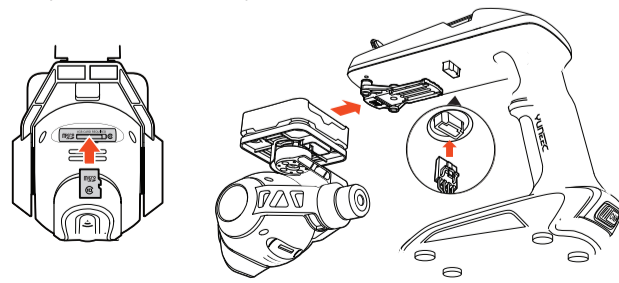
STEP 3) Re-installing the Battery Cover / Door on the bottom of the SteadyGrip™

Once you've installed 6 fresh AA batteries, Hold the bottom of the SteadyGrip™ toward yourself with the front part facing downward. Slide the battery cover / door downward with slight force and ensure you hear and feel a noticeable 'click' indicating the battery cover / door has been closed securely.

ATTACHING THE CGO2-GB TO THE STEADYGRIP™

WARNING: Before switching on the SteadyGrip™ it is highly recommended to first securely attach the CGO2-GB to your SteadyGrip™.

QUICK TIP: It's a good idea to ensure you have your microSD card with lots of space for photos and videos handy.



STEP 1) Carefully slide the top part of the CGO2-GB (that also attaches below the nose of the Q500 Typhoon) onto the mount below the front part of the SteadyGrip™. A corresponding 'click' will be noticed once the CGO2-GB has securely been installed into the slide-in mount on the SteadyGrip™.

USER MANUAL

STEADYGRIP

CGO

STEP 2) Carefully connect the CGO2-GB's power/control connector to the power/control port of the CGO SteadyGrip™ and then insert a microSD card into the corresponding slot on the bottom of the CGO2-GB. You can use the included 8GB card (from your RTF package) or any Class 10 microSD card up to 128GB.



STEP 3) Powering on and initialization. Place your CGO SteadyGrip™ on a flat and stable surface, then switch on the SteadyGrip™ and it will initialize after 4-8 seconds of no movement or vibration.

SteadyGrip™ Main LED Status:

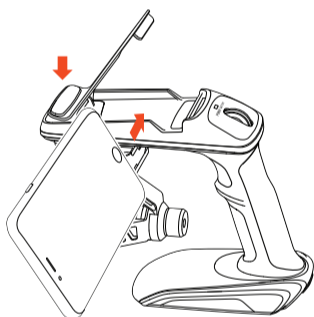


Upon Powering On: Green LED Blinking for 8 seconds (Starting up, Initialization) and Then Solid Green for READY TO USE!
 Low Voltage Warning: Green LED Blinking Slowly
 Voltage Dropping: Green Blinking LED Speeds Up As The Voltage Drops
 CGO2-GB Error: Red LED Blinking

ATTACHING A MOBILE DEVICE TO THE STEADYGRIP™

The SteadyGrip's ergonomic design is capable of holding up to a 6.4 inch mobile device.

Step 1) Press the Curved Lip at the top front of the SteadyGrip™ as illustrated and fit your Mobile Device with the screen facing toward the Main LED and Pitch Control Wheel.



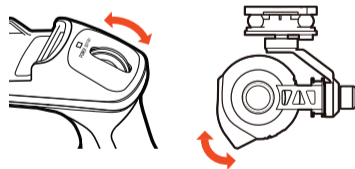
Step 2) Download the CGO2 APP on the Apple APPSTORE or Android APPS Marketplace.

Step 3) Connect your Mobile Device to the CGO2-GB's WiFi by selecting CGO2GB's SSID and by entering the WiFi Key / Password:1234567890.



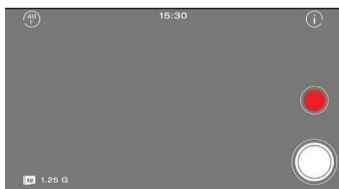
USING THE CAMERA PITCH CONTROL WHEEL

The SteadyGrip™ features a camera pitch controller that allows precise camera angle control on the go. Simply roll the pitch control wheel forward to move the camera pitch/angle downward and roll the pitch control wheel backward to move the camera pitch/angle upward. Please review these instructions along with the illustrations to familiarize yourself on how to control the CGO2-GB with your SteadyGrip™.



TAKING PHOTOS AND RECORDING VIDEO

CGO2 APP seamlessly integrates camera controls and user settings of the CGO2-GB so you can easily take still photos and start/stop video recording using the corresponding buttons touch screen buttons found on the app.



1) To take a still photo press the White Still Photo Capture button to capture. You'll hear an audible 'shutter' sound from the APP and the LED indicator on the front of the CGO2-GB will change from glowing solid green to glowing solid blue. It will take approximately 5 seconds to capture the photo and before you can take another still photo.

IMPORTANT NOTE: You cannot take still photos while recording video. You MUST stop recording video in order to take still photos.

2) To start/stop recording video simply press the red button located on the APP. You'll hear an audible indication from the APP each time the recording starts/stops. And while video is recording the LED indicator on the front of the CGO2-GB will flash blue and green, and there will be an indicator showing time length of the recording on the APP Screen.

IMPORTANT NOTE: You can choose to record video at 48, 50 (PAL) or 60 (NTSC) frames per second by tapping the corresponding button near the upper left-hand corner on main screen of the APP. Keep in mind that the delay in the live video stream will be lowest at 48 and 50 as compared to 60 frames per second.

The pitch control wheel, (similar to a scroll wheel on a traditional computer mouse) located on the top of the SteadyGrip™ allows you to set the pitch/tilt position of the CGO2-GB from approximately straight ahead (when the pitch control wheel is rolled backward toward the user to its maximum position) to approximately straight down (when the pitch control wheel is rolled out away from you until its maximum position). And you can easily set a position in between by adjusting the pitch control wheel accordingly. According to Figure 9a on page 9.

QUICK TIP: There's an adjustable counterbalance located on the rear of the CGO2-GB. This counterbalance has been adjusted at the factory to provide the best balance and performance overall so typically it should NOT need to be adjusted. However, if you find that the CGO2-GB is making any 'buzzing' sounds while powered on, carefully twist the counterbalance in or out until the sound stops in order to achieve the best balance, performance and photo/video quality.

WARRANTY INFORMATION

Yuneeec products and accessories are guaranteed against manufacturing defects for six (6) months from the original date of purchase. Yuneeec's sole obligation in the event of such defects during this period is to repair or replace the defective part or product with a comparable part or product at Yuneeec's sole discretion. Except for such repair or replacement, the sale, processing or other handling of this product is without warranty, condition or other liability. Damage (including crash damage) resulting from use, accident, or normal wear and tear is not covered by this or any warranty. Yuneeec assumes no liability for any accident, injury, death, loss, or other claim related to or resulting from the use of this product. In no event shall Yuneeec be liable for incidental or consequential damages relating to or resulting from the use of this product or any of its parts. Please review the instructions carefully when using the products. Returns or replacements of parts and/or products may be subject to shipping, handling, replacement and/or restocking fees.

IMPORTANT NOTE: Drop or water damage is NOT covered under warranty.

CUSTOMER SERVICE

<http://yuneeec.com/support>

YUNEEC USA
 5555 Ontario Mills Parkway,
 Ontario, CA91764, USA
 1 855 2848888
 sales@yuneeec.com

YUNEEC HK
 2/F, Man Shung Industrial Building,
 7 Lai Yip Street, Kwun Tong,
 Kowloon, Hong Kong
 852 3616 6071
 asiasales@yuneeec.com

YUNEEC EU
 Nikolaus-Otto-Strasse 4
 24568 Kaltenkirchen, Germany
 +49 4191 932620
 eusales@yuneeec.com

YUNEEC AU
 53 Ellemease Circuit, Lonsdale
 South Australia 5160
 +61 (0) 8 8186 3301
 aussales@yuneeec.com

This device complies with part 15 of the FCC Rules. Operation is subject to the following two conditions: (1) This device may not cause harmful interference, and (2) this device must accept any interference received, including interference that may cause undesired operation.

