

User's Guide



**TRENDNET**<sup>®</sup>



**300Mbps Easy-N Range Extender**

**TEW-736RE**

## Contents

<b>Product Overview .....</b>	<b>3</b>
Package Contents .....	3
Features .....	3
Product Hardware Features.....	4
Network Diagram.....	5
Steps to improve wireless connectivity .....	6
Extending a wireless network.....	6
<b>Basic Setup.....</b>	<b>7</b>
Wi-Fi Protected Setup (WPS) Push Button Configuration (PBC)Setup .....	7
Setup Wizard Configuration .....	7
Connect wireless devices to your extended network.....	9
<b>Advance Setup .....</b>	<b>9</b>
How to access the management page after the TEW-736RE is linked to a router or access point .....	9
Change the login password.....	10
Change the device name .....	10
Upgrade firmware .....	10
Change the IP address .....	11
Changes the extended wireless network.....	11
Save configured settings.....	12
Load saved settings.....	12
Reboot your device.....	12
Reset your device to factory default .....	13
View the status of the device .....	13
<b>Management Page Structure.....</b>	<b>14</b>
<b>Technical Specifications .....</b>	<b>14</b>
<b>Troubleshooting.....</b>	<b>15</b>
<b>Appendix.....</b>	<b>16</b>

## Product Overview



## Package Contents

- TEW-736RE
- Network cable
- Power adapter (12.0V, 0.5A)
- CD-ROM with Manual
- Quick Installation Guide

If any package contents are missing or damaged, please contact the retail store, online retailer, or reseller/distributor from which the product was purchased.

## Features

TRENDnet's 300Mbps Easy-N Range Extender, extends the coverage of your existing wireless n network. Setup is simple, with no drivers to install. Simply press the Wi-Fi Protected Setup (WPS) button on your router or access point, then on the TEW-736RE and you're done—the 300Mbps Easy-N Range Extender is now extending your high performance wireless N network over a large area.

Multiple Input Multiple Output (MIMO) antenna technology dramatically increases wireless coverage with a high speed 300Mbps wireless network. LED displays convey device and port status for easy troubleshooting.

- 1x 10/100Mbps Auto-MDIX Ethernet port
- 1x Wi-Fi Protected Setup (WPS) button
- 2x 2dBi detachable antennas
- Compliant with IEEE 802.11n, IEEE 802.11g, and 802.11b standards
- Compact high performance wireless n range extender
- High-speed data rates of up to 300Mbps with IEEE 802.11n\*
- Up to 50% energy savings with GREENnet technology
- Supports up to WPA2-PSK wireless encryption
- One-touch wireless security setup using the Wi-Fi Protected Setup (WPS) button
- Low interference and high susceptibility deliver reliable performance
- Indoor coverage up to 100 meters (328ft.)\*
- Outdoor coverage up to 300 meters (984ft.)\*
- 3-year limited warranty

## Product Hardware Features

### Front View



- **WPS (Wi-Fi Protected Setup)** –Push and hold this button for 5 seconds to activate WPS. The WPS LED will blink green when WPS is activated.
- **LED indicators**
  - **Power** -Solid green when the extender is powered on. Otherwise if this LED indicator is off, there is no power to this device.
  - **LAN (Link/Activity)** –Solid green when the LAN ports are physically connected to your wired network devices successfully with an Ethernet cable (also called network cable). These LED indicators will be blinking green while data is transmitted or received through your router LAN ports.
  - **WPS (Wi-Fi Protected Setup)** –The WPS LED blinks green when WPS is activated and attempting to authenticate to your network. This indicator will turn off when WPS authentication has been completed.
  - **Wireless/WLAN (Link/Activity)** – This LED indicator is blinking green when the wireless is “On” and functioning properly. This LED indicator will be blinking green rapidly while data is transmitted or received by your wireless clients or wireless network devices connected to your router.

### Rear View



- **LAN Port** – Connect an Ethernet cable (also called network cables) from your computer to configure the device.
- **Power Port** – Connect the included power adapter to an available power outlet.

**Caution:** Use only the adapter that came with your router.

## Side View 1

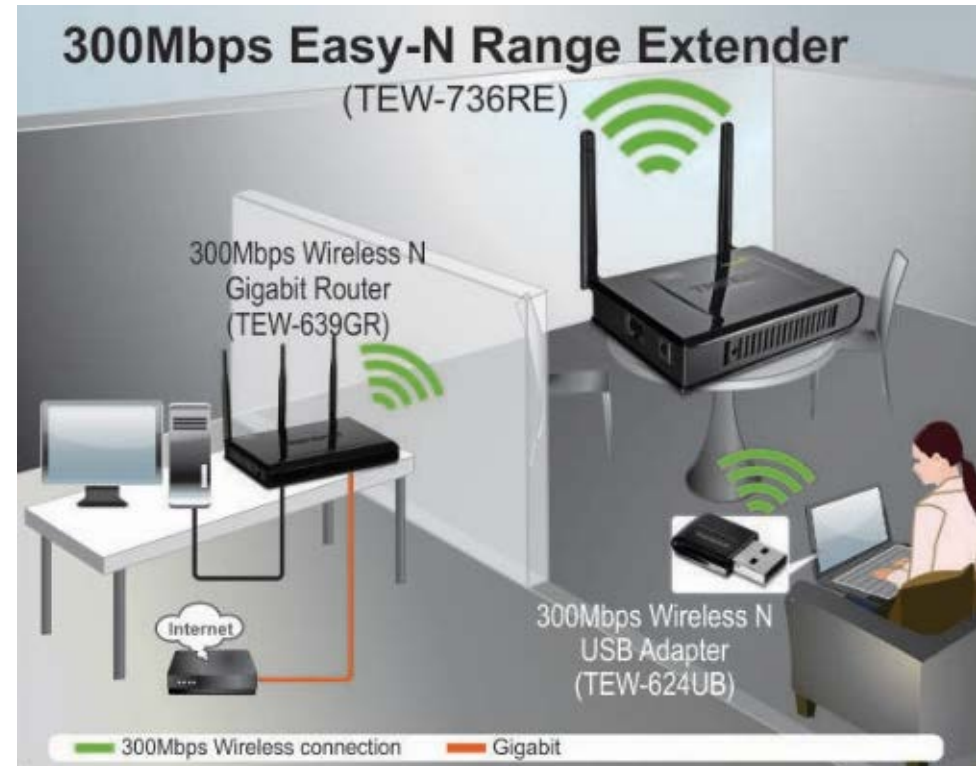


- **Reset Button**—When powered up, use an item such as a paperclip to push and hold this button for 15 seconds and release to reset your router to its factory defaults.

## Side View2



- **Antennas**— The antennas broadcast wireless signals to allow your wireless clients creating a wireless network. Because the TEW-736RE comes with detachable antennas, they can be upgraded using the TEW-AI770B, Duo 7dBi Indoor Omni-Directional Antenna.

Network Diagram

The range extender is installed in a location where the wireless signal of an existing wireless network exists. The ideal location to place the range extender is in a location where the wireless of an existing signal is available but weak. The range extender needs to detect the existing wireless signal in order to extend any signal.

## **Steps to improve wireless connectivity**

There are a number of factors that can impact the range of wireless devices. Follow these tips to help improve your wireless connectivity:

1. Keep the number of obstructions to a minimum. Each obstruction can reduce the range of a wireless device. Position the wireless devices in a manner that will minimize the amount of obstructions between them.
  - a. For the widest coverage area, install your router near the center of your home, and near the ceiling, if possible.
  - b. Avoid placing the router on or near metal objects (such as file cabinets and metal furniture), reflective surfaces (such as glass or mirrors), and masonry walls.
  - c. Any obstruction can weaken the wireless signal (even non-metallic objects), so the fewer obstructions between the router and the wireless device, the better.
  - d. Place the router in a location away from other electronics, motors, and fluorescent lighting.
  - e. Many environmental variables can affect the router's performance, so if your wireless signal is weak, place the router in several locations and test the signal strength to determine the ideal position.
2. Building materials can have a large impact on your wireless signal. In an indoor environment, try to position the wireless devices so that the signal passes through less dense material such as dry wall. Dense materials like metal, solid wood, glass or even furniture may block or degrade the signal.
3. Antenna orientation can also have a large impact on your wireless signal. Use the wireless adapter's site survey tool to determine the best antenna orientation for your wireless devices.
4. Interference from devices that produce RF (radio frequency) noise can also impact your signal. Position your wireless devices away from anything that generates RF noise, such as microwaves, radios and baby monitors.

## **Extending a wireless network**

### **What is a wireless network?**

A network is a group of computers or devices that can communicate with each other. A home network of more than one computer or device also typically includes Internet access, which requires a router. A large home network may also have a switch, additional routers, access points, and many Internet-capable media devices such as TVs, game consoles, and internet cameras.

A wireless network is the same network mentioned however the devices communicate with each other wirelessly.

### **Why use a wireless extender?**

An existing wireless network may not have the ability to cover your entire home or office. Wireless dead spots are locations around your home or office where you are unable to establish a wireless connection to your network. The range extender eliminates dead spots by connecting to an existing wireless network, and broadcasting another wireless signal in an area with a weak wireless signal. .

### **How to setup your range extender**

There are two ways you can configure the TEW-736RE. The easiest way is to use the WPS (Wi-Fi Protected Setup) Push Button Configuration method. To use this method your wireless router or access point must also have a WPS button. The second way to configure the TEW-736RE is through the built-in setup Wizard.

### **Where to find more help**

In addition to this User's Guide, you can find help below:

- <http://www.trendnet.com/support>  
(documents, downloads, and FAQs are available from this Web page)

## Basic Setup

### Wi-Fi Protected Setup (WPS) Push Button Configuration (PBC) Setup

WPS is a feature that makes it easy to setup the TEW-736RE to your wireless network. If your wireless router or access point does not have a WPS button, set up the TEW-736RE using the Setup Wizard Configuration method outlined in the following section.

**Note:**

- Make sure your wireless router or access point has a WPS button.
- Do not connect the TEW-736RE until instructed to do so.
- The initial installation can be performed next to your wireless router or access point.

1. Connect the Power Adapter to the TEW-736RE and then to a power outlet (EU Versions will have a power button on the back. Push the power button to the "On" position).
2. Verify that the power is on.
3. Press and hold the WPS button on your wireless router or access point for 5 seconds. If you router or access point has a WPS LED indicator, it should start flashing.



4. Press and hold the WPS button on the TEW-736RE for 5 seconds.



5. Once connection has been successfully established the WPS LED on the TEW-736RE will automatically turn off.
6. Place the TEW-736RE in your desired location.
7. Plug in the power adapter into the TEW-736RE and verify that the panel lights are on.
8. Verify the TEW-736RE is now connected to your network. Connect your computer to the Network port on the back of the TEW-736RE. Confirm that the wireless function of your computer is turned off. Open a Web browser and confirm that you can access the Internet.

**Note:**

- The TEW-736RE must be placed in a location where it can establish a wireless connection to your wireless network. The most ideal locations are areas where wireless adapters can maintain 2-3 bars with your existing router or a 20-30% connection rating.
- When conducting a wireless scan you may see the router's wireless network name listed twice. This is normal because the TEW-736RE broadcasts the same network name as your router or access point.

### Setup Wizard Configuration

The setup wizard provides easy step by step instructions on how to configure the TEW-736RE to your wireless network. Follow the steps provided below to continue.

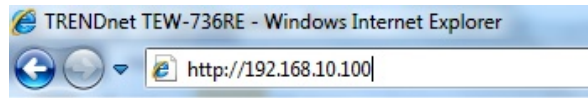
**Note:**

- Do not connect/install the TEW-736RE to your network until instructed to do so.
  - Make sure your network adapter settings are set to obtain an IP address automatically.
1. Using a network cable, connect your computer to the TEW-736RE's LAN ports.





2. Connect the Power Adapter to the TEW-736RE and then to a power outlet (EU Versions will have a power button on the back. Push the power button to the "On" position). Verify that the power is on
3. Open your web browser, type <http://tew-736re.trendnet> in the address bar (or the default IP address <http://192.168.10.100>), and then press enter



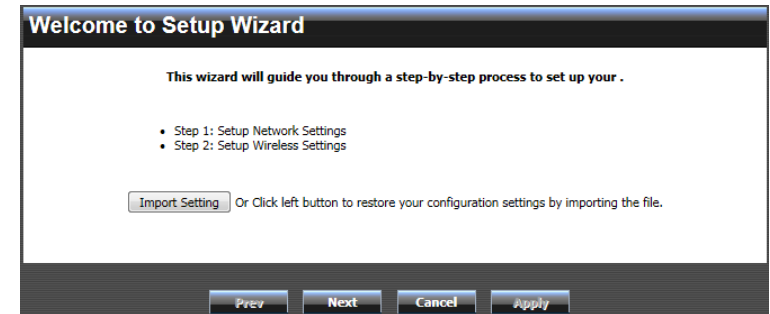
4. Enter the User Name and password and then click OK.  
Default Settings: User name and Password: admin

**Note:**

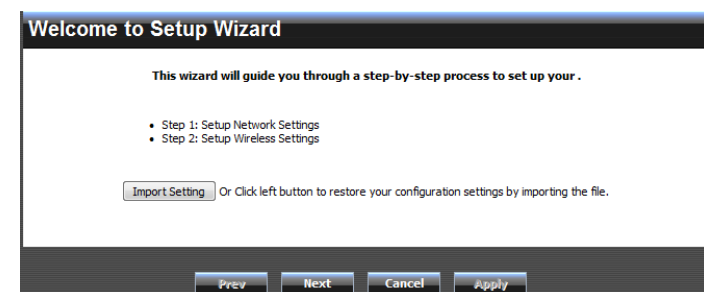
- User name and Password are case sensitive.



5. The Wizard will automatically appear. Click **Administration** -> **Wizard** if the Wizard does not automatically appear.
6. Click **Next** to begin the wizard and wireless setup.



7. Choose DHCP client (automatically obtain IP address). Click **Next**. (Leave Host Name blank)
8. Select **Manual Setup** and click **Next**.
  - a. When connecting to your router or access point, you will be prompted for its security password. Please have the password handy before proceeding.
9. Click Scan to view the available wireless networks.
10. Select the network for which you would like the TEW-637RE to extend and click **Select** and then click **Next**.
11. Enter your router or access point's wireless password next to Pass Phrase and click **Next**.
12. Verify the information is correct, click **Apply**, and wait for the TEW-736RE to reboot.
13. Unplug the power adapter and disconnect the TEW-736RE from your computer.
14. Place the TEW-736RE in your desired location.
15. Plug in the power adapter into the TEW-736RE and verify that the following panel lights are on: Power (Green/Solid) and Wireless (Green/Blinking)



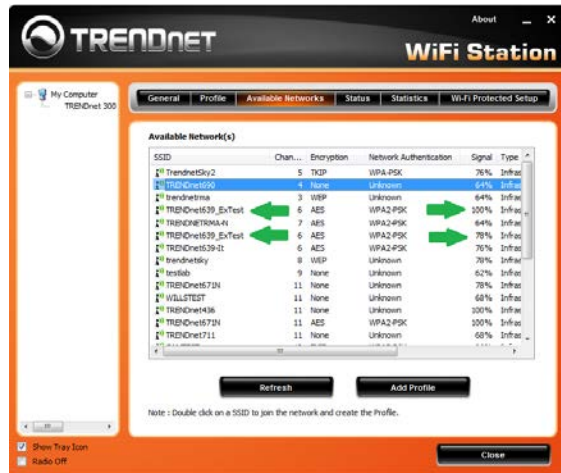


**Note:**

- The TEW-736RE must be placed in a location where it can establish a wireless connection to your wireless network. The most ideal locations are areas where wireless adapters can maintain 2-3 bars with your existing router or a 20-30% connection rating.
- When conducting a wireless scan you may see the router's wireless network name listed twice. This is normal because the TEW-736RE broadcasts the same network name as your router or access point.

**Connect wireless devices to your extended network**

You can connect to the extended wireless network the same way you would connect to any wireless network. When conducting a wireless scan on your wireless device you may see the same network name displayed twice. This is normal because the TEW-736RE extends your existing wireless network and repeats the network name of your router or access point. When choosing a wireless network name, you should always select the network name with the strongest signal. Once you have configured and saved the wireless network profile, your wireless device will automatically choose the strongest signal.

**Advance Setup****How to access the management page after the TEW-736RE is linked to a router or access point**

**Note:** Once the TEW-736RE is connected to your router or access point you will **NO LONGER** be able to access the device using the default management page <http://tew-736re.trendnet> or the default IP address of <http://192.168.10.100>.

**To access the TEW-736RE management page while it is connected to a router (or access point):**

1. Access your router's management interface (see router's User's Guide for instructions).
2. Find the TEW-736RE in your router's DHCP Client List.
3. Cross reference the MAC address on the DHCP Client List with the MAC address on the TEW-736RE device label (on the bottom of the Extender).
4. Use the IP address assigned to the TEW-736RE (e.g. if the router has assigned the TEW-736RE the IP Address of 192.168.1.123, then open a Web browser and type in <http://192.168.1.123>.
5. This will open the TEW-736RE management page.
6. Enter the default User Name and Password of admin in both fields.
  - a. **Note:** User name and Password are case sensitive.

## Change the login password

Administrator > Management

It is recommended that the login password is changed. This will help prevent unwanted users from logging into your device.

1. Log into the management page (see [“How to access your router management page after the TEW-736RE is linked to a router or access point” on page 9](#)).
2. Click on **Administrator** and **Management**.
3. Under the *Administrator Settings* section, in the **Account** field, enter the “admin”. In the **Password** field, enter your new password, retype the new password again in the **Password Confirm** field to confirm.
4. Click **Apply** button to apply setting changes.

## Change the device name

Administrator > Management

The device name is used to determine all devices in the network. By default the device name is “TEW-736RE”. This is the name that appears in your network map or DHCP server client list. You can change the name to help easily distinguish between devices.

1. Log into the management page (see [“How to access your router management page after the TEW-736RE is linked to a router or access point” on page 9](#)).
2. Click on **Administrator** and **Management**.
3. Under the *Device Name Settings* section, enter the new Device Name.

4. Click **Apply** button to apply setting changes.

## Upgrade firmware

Administrator > Upload Firmware

Updated firmware versions may be made available for download by TRENDnet at [www.trendnet.com/downloads..](http://www.trendnet.com/downloads..) These updates are available to resolve issues that may or may not affect you. It is not entirely recommended to update the firmware if you are not encountering any issues. Release notes are posted to determine if the updated firmware resolves issues you are encountering. To verify if new firmware is available, first reference the firmware number that your device is currently using. In the TEW-637RE management interface Click on Administrator and then on Status. The firmware version in use is listed at the top of this page. Cross reference the firmware available at [www.trendnet.com](http://www.trendnet.com) against the firmware your device is using.

**Note:** The firmware file downloaded from the product webpage is a “.zip” file. The firmware is a “.bin” file and you will need to extract the zip file first.

1. Download the new firmware from [www.trendnet.com](http://www.trendnet.com) to your computer.
2. Extract the downloaded firmware from its “.zip” file to its native “.bin” file format.
3. Log into the management page (see [“How to access your router management page after the TEW-736RE is linked to a router or access point” on page 9](#)).
4. Click on **Administrator** and **Upload Firmware**.

5. Click **Browse** and select the firmware file (.bin) in the firmware file downloaded.
6. Click **Apply** to upload the firmware.

**Note:**

- It is recommended to use a wired connection when uploading any firmware.
- It is recommended to restore the device back to factory default settings once the firmware upgrade process is completed. This requires the device to be reconfigured or you can upload any saved settings.

**Change the IP address**

Network &gt; LAN Setting

TRENDnet recommends setting the TEW-736RE to *DHCP Mode* which allows the TEW-736RE to automatically obtain an IP address from your wireless router, or access point. You can set the TEW-736RE to *Static Mode* and assign an IP address. However the IP address you assign must be within the same subnet of your network. Any network device outside the subnet will not be able to communicate within the network.

**Note:** You can assign an IP address outside of the DHCP server's range or assign an IP address towards the last IP possibly assigned from the DHCP server. This would prevent any IP conflicting issues.

1. Log into to the management page (see [“How to access the management” page9](#)).
2. Click on **Network** and click on **LAN Setting**.

**Local Area Network (LAN) Settings**

You may choose different connection type suitable for your environment. Besides, you may also configure parameters according to the selected connection type.

**Mode Setting**

LAN Connection Type: Static IP

**Static Mode**

IP Address: 192.168.10.100

Subnet Mask: 255.255.255.0

Apply Cancel

3. Select **Static IP** under *LAN Connection Type*.
4. Enter the *IP address* and *Subnet Mask* setting.
5. Click **Apply** to save settings.

**Note:** You will need to access the management page using the IP address that was assigned.

**Changes the extended wireless network**

Wireless &gt; Site Survey

Connecting the TEW-736RE to a different router or access point is easy.

1. Log into to the management page (see [“How to access the management” page 9](#)).
2. Click on **Wireless** and click on **Site Survey**.
3. Click **Rescan** if you do not see your wireless network.

**Repeater Site Survey**

Site survey page shows information of APs nearby. You may choose one of these APs connecting or adding it to profile.

Select	SSID	BSSID	Signal	Ch.	Encrypt
<input checked="" type="radio"/>	TRENDnet691	00:14:D1:CB:67:B8	Full	1	WPA2-PSK
<input type="radio"/>	TRENDnet551_media	00:14:D1:B8:0A:F0	Full	2	WPA2-PSK
<input type="radio"/>	TRENDNETRMA-N	00:14:D1:C3:8D:DD	Full	7	WPA2-PSK
<input type="radio"/>	PCZTV_PRO_AccessPoint	74:2F:68:65:86:75	Full	1	None
<input type="radio"/>	TRENDNETVH-n	00:14:D1:AD:34:CC	Full	4	WPA2-PSK
<input type="radio"/>	trendnetma	00:C0:02:90:F4:62	Full	3	WEP
<input type="radio"/>	testlab	00:14:D1:CB:68:0C	Full	9	None
<input type="radio"/>	TrendnetWh-gn	00:02:6F:61:FA:E8	Full	11	WPA2-PSK
<input type="radio"/>	trendnetsky	00:C0:02:E7:D0:F0	Full	6	WEP
<input type="radio"/>	TrendnetSkyN	00:14:D1:C5:7D:44	Full	9	WPA2-PSK
<input type="radio"/>	smarteloffice	00:19:15:C7:6D:E1	Full	6	WEP

Connect Rescan

4. Select your wireless network and click **Connect**.
5. If wireless device for which you are connecting has security enabled you will be prompted to enter the device's wireless password in the Pre-Share Key field.

6. Enter the wireless password and click **Apply**.

## Save configured settings

*Administrator > Settings Management*

Applied settings on the device can be saved and can be used to restore settings. The device will automatically be configured based on the saved settings. This can be used to immediately restore settings to the device when configuring multiple devices.

1. Log into the management page ([see "How to access your router management page" on page 9](#)).
2. Click on **Administrator** and **Settings Management**.

3. Click on **Export**.
4. Name the file name you would like and select the location for which you would like to save the file.

## Load saved settings

*Administrator > Settings Management*

Saved configuration settings can be used and uploaded to the device. Once the configuration file is uploaded the device will automatically be configured based on the saved settings.

1. Log into the management page ([see "How to access your router management page" on page 9](#)).
2. Click on **Administrator** and **Settings Management**.

3. Click **Browse** and select the saved settings file you have saved.
4. Click **Import** to upload the settings.

## Reboot your device

*Administrator > Settings Management*

There may come a time when the TEW-736RE needs a power cycle or reboot. Instead of unplugging the power adapter and plugging it back on, you can follow the steps below to reboot the device.

1. Log into the management page ([see "How to access your router management page" on page 9](#)).
2. Click on **Administrator** and **Settings Management**.

3. Click on **Reboot** button.

## Reset your device to factory default

Administrator > Settings Management

There are two ways you can restore or reset the device back to factory default settings. The first way is the easiest and fastest way. Press and hold the reset button on the side of the unit for 10 seconds and release (see side "Side Panel "on page 3). You can also follow the steps below to reset the device through the user interface.

1. Log into the management page (see ["How to access your router management page" on page 9](#)).
2. Click on **Administrator** and **Settings Management**.



3. Click on **Load Default** button.

## View the status of the device

Administrator > Status

You can view the current status of the device on the user interface. This page displays useful information about the device. From firmware version information to signal strength all information displayed in this page can be used when trouble shooting the device.

1. Log into the management page (see ["How to access your router management page" on page 9](#)).
2. Click on **Administrator** and **Status**.

### Status

The device status.

System Info	
<b>Firmware Version</b>	v0.0.0.2, 22-Jul-2011
<b>System Up Time</b>	0:14:45

Network Configurations	
<b>MAC Address</b>	00:11:E0:03:D9:2F
<b>Connected Type</b>	Static IP
<b>LAN IP Address</b>	192.168.10.100
<b>Subnet Mask</b>	255.255.255.0

Repeater Link Status	
<b>Status</b>	Disconnected
<b>BSSID</b>	
<b>SSID</b>	TRENDnet736
<b>Channel</b>	6
<b>Security Mode</b>	Disabled
<b>Link Quality</b>	
<b>Signal Strength</b>	

## Management Page Structure

### Network

- LAN Setting

### Wireless

- Site Survey
  - Encryption

### Administrator

- Wizard
- Management
  - Administrator Settings
  - Device Name Settings
- Upload Firmware
- Settings Management
  - Export Settings
  - Import Settings
  - Load Factory Default
  - System Reboot
- Status
  - System Info
  - Network Configurations
  - Repeater Link Status

## Technical Specifications

Hardware	
<b>Standards</b>	IEEE 802.11n , IEEE 802.11b, IEEE 802.11g, IEEE 802.3u, and IEEE 802.3
<b>Interface</b>	1 x 10/100Mbps Auto-MDIX LAN port
<b>LED Indicators</b>	Power, LAN, WPS, and Wireless
<b>Buttons</b>	Reset button – restores factory default settings WPS button- enables WPS function
<b>Power Supply</b>	Input: 100 ~ 240V 0.5A AC, 50~60Hz Output: 12V DC, 0.5A external power adapter
<b>Dimensions (L x W x H)</b>	120 x 26 x 88 mm (4.7 x 1.0 x 3.4 in.)
<b>Weight</b>	145 g (5.11 oz)
<b>Temperature</b>	Operating: 0° ~ 40°C (32° ~ 104°F) Storage: -20°C ~ 60°C (-4° ~ 140° F)
<b>Humidity</b>	Max. 90% non-condensing
Wireless	
<b>Modulation</b>	OFDM and CCK
<b>Antenna</b>	2 x 2dBi detachable antennas
<b>Frequency</b>	2.412 - 2.462GHz FCC 2.412 – 2.472GHz ETSI
<b>Data Rate (Auto Fallback)</b>	802.11n: up to 300Mbps 802.11g: up to 54Mbps 802.11b: up to 11Mbps
<b>Output Power</b>	802.11b: 18dBm (typical) @ 11Mbps 802.11g: 15dBm (typical) @ 54Mbps 802.11n: 15dBm (typical) @ 300Mbps
<b>Receiving Sensitivity</b>	802.11b: -84dBm (typical) @ 11Mbps 802.11g: -72dBm (typical) @ 54Mbps 802.11n: -68dBm (typical) @ 300Mbps
<b>Encryption</b>	64/128-bit WEP, WPA/WPA2-PSK
<b>Channels</b>	1-11 (FCC), 1-13 (ETSI)
<b>Certifications</b>	CE, FCC

\*Maximum wireless signal rates are referenced from IEEE 802.11 theoretical specifications. Actual data throughput and coverage will vary depending on interference, network traffic, building materials and other conditions.

## Troubleshooting

**Q: How can I verify if my wireless router or access point supports Wi-Fi Protected Setup (WPS) Push Button Configuration and how can I configure it.**

**Answer:**

1. Check your wireless router or access point's technical specification and refer to the user manual for instructions on how to configure WPS.
2. Contact the manufacture of your router or access point's technical support.

**Q: I tried to manually configure the device through the wizard and when I typed <http://192.168.10.100> or <http://tew-736re.trendnet> in my Internet Browser Address Bar, an error message says "The page cannot be displayed." How can I access the router management page?**

**Answer:**

1. Check your hardware settings again. See "Router Installation" on [page 7](#).
2. Make sure the Power LED indicator is lit.
3. Make sure your network adapter TCP/IP settings are set to Obtain an IP address automatically or DHCP (see the steps below).
4. Press on the factory reset button for 15 seconds, the release.

### Windows 7

- a. Go into the **Control Panel**, click **Network and Sharing Center**.
- b. Click **Change Adapter Settings**, right-click the **Local Area Connection** icon.
- c. Then click **Properties** and click **Internet Protocol Version 4 (TCP/IPv4)**.
- d. Then click **Obtain an IP address automatically** and click **OK**.

### Windows Vista

- a. Go into the **Control Panel**, click **Network and Internet**.
- b. Click **Manage Network Connections**, right-click the **Local Area Connection** icon and click **Properties**.
- c. Click **Internet Protocol Version (TCP/IPv4)** and then click **Properties**.
- d. Then click **Obtain an IP address automatically** and click **OK**.

### Windows XP/2000

- a. Go into the **Control Panel**, double-click the **Network Connections** icon
- b. Right-click the **Local Area Connection** icon and the click **Properties**.
- c. Click **Internet Protocol (TCP/IP)** and click **Properties**.
- d. Then click **Obtain an IP address automatically** and click **OK**.

**Note:** If you are experiencing difficulties, please contact your computer or operating system manufacturer for assistance.

**Q: Can I use Wi-Fi Protected Setup (WPS) Push Button Configuration to add wireless clients to my network?**

**Answer:**

No, the WPS Push Button Configuration feature cannot be used to add wireless clients to your network. It is only used to authenticate the device to your wireless network. If you want to add wireless clients to your network, you must use your wireless router or access point's WPS Push Button Configuration feature.

**Q: When I conduct a wireless scan I see 2 of my wireless network name (SSID), which one should I connect to?**

**Answer:**

The TEW-736RE repeats and extends the wireless signal of your wireless network, it is normal to see 2 of your wireless network name (SSID). You can connect to either of your wireless network name (SSID), your wireless adapter will automatically pick the strongest signal.

**Q: I cannot get onto the Internet. What should I do?**

**Answer:**

1. Verify that you are connected to the correct wireless network.
2. Power cycle your router and extender
3. Verify that you can get onto the Internet with a direct connection your router with a wired connection.



## Appendix

### How to find your IP address?

**Note:** Please note that although the following procedures provided to follow for your operating system on configuring your network settings can be used as general guidelines, however, it is strongly recommended that you consult your computer or operating system manufacturer directly for assistance on the proper procedure for configuring network settings.

#### Command Prompt Method

##### **Windows 2000/XP/Vista/7**

1. On your keyboard, press **Windows Logo+R** keys simultaneously to bring up the Run dialog box.
2. In the dialog box, type **cmd** to bring up the command prompt.
3. In the command prompt, type **ipconfig /all** to display your IP address settings.

##### **MAC OS X**

1. Navigate to your **Applications** folder and open **Utilities**.
2. Double-click on **Terminal** to launch the command prompt.
3. In the command prompt, type **ipconfiggetifaddr<en0 or en1>** to display the wired or wireless IP address settings.

**Note:** **en0** is typically the wired Network and **en1** is typically the wireless Airport interface.

#### Graphical Method

##### **MAC OS 10.6/10.5**

1. From the Apple menu, select **System Preferences**.
2. In System Preferences, from the **View** menu, select **Network**.
3. In the Network preference window, click a network port (e.g., Network, AirPort, modem). If you are connected, you'll see your IP address settings under "Status:"

##### **MAC OS 10.4**

1. From the Apple menu, select **Location**, and then **Network Preferences**.
2. In the Network Preference window, next to "Show:", select **Network Status**. You'll see your network status and your IP address settings displayed.

**Note:** If you are experiencing difficulties, please contact your computer or operating system manufacturer for assistance.

### How to configure your network settings to obtain an IP address automatically or use DHCP?

**Note:** Please note that although the following procedures provided to follow for your operating system on configuring your network settings can be used as general guidelines, however, it is strongly recommended that you consult your computer or operating system manufacturer directly for assistance on the proper procedure for configuring network settings.

#### **Windows 7**

- a. Go into the **Control Panel**, click **Network and Sharing Center**.
- b. Click **Change Adapter Settings**, right-click the **Local Area Connection** icon.
- c. Then click **Properties** and click **Internet Protocol Version 4 (TCP/IPv4)**.
- d. Then click **Obtain an IP address automatically** and click **OK**.

#### **Windows Vista**

- a. Go into the **Control Panel**, click **Network and Internet**.
- b. Click **Manage Network Connections**, right-click the **Local Area Connection** icon and click **Properties**.
- c. Click **Internet Protocol Version (TCP/IPv4)** and then click **Properties**.
- d. Then click **Obtain an IP address automatically** and click **OK**.

#### **Windows XP/2000**

- a. Go into the **Control Panel**, double-click the **Network Connections** icon
- b. Right-click the **Local Area Connection** icon and the click **Properties**.
- c. Click **Internet Protocol (TCP/IP)** and click **Properties**.
- d. Then click **Obtain an IP address automatically** and click **OK**.

#### **MAC OS 10.4/10.5/10.6**

- a. From the **Apple**, drop-down list, select **System Preferences**.
- b. Click the **Network** icon.
- c. From the **Location** drop-down list, select **Automatic**.
- d. Select and view your Network connection.
  - In MAC OS 10.4, from the **Show** drop-down list, select **Built-in Network** and select the **TCP/IP** tab.
  - In MAC OS 10.5/10.6, in the left column, select **Network**.
- e. Configure TCP/IP to use DHCP.
  - In MAC 10.4, from the **Configure IPv4**, drop-down list, select **Using DHCP** and click the **Apply Now** button.
  - In MAC 10.5, from the **Configure** drop-down list, select **Using DHCP** and click the **Apply** button.
  - In MAC 10.6, from the **Configure** drop-down list, select **Using DHCP** and click the **Apply** button.
- f. Restart your computer.

**Note:** If you are experiencing difficulties, please contact your computer or operating system manufacturer for assistance.

#### How to find your MAC address?

In Windows 2000/XP/Vista/7,

Your computer MAC addresses are also displayed in this window, however, you can type **getmac -v** to display the MAC addresses only.

In MAC OS 10.4,

1. **Apple Menu > System Preferences > Network**
2. From the **Show** menu, select **Built-in Network**.
3. On the **Network** tab, the **Network ID** is your MAC Address.



In MAC OS 10.5/10.6,

1. **Apple Menu > System Preferences > Network**
2. Select **Network** from the list on the left.
3. Click the **Advanced** button.
3. On the **Network** tab, the **Network ID** is your MAC Address.


#### How to connect to a wireless network using the built-in Windows utility?

**Note:** Please note that although the following procedures provided to follow for your operating system on configuring your network settings can be used as general guidelines, however, it is strongly recommended that you consult your computer or operating system manufacturer directly for assistance on the proper procedure for connecting to a wireless network using the built-in utility.

##### Windows 7

1. Open Connect to a Network by clicking the network icon (  or  ) in the notification area.
2. In the list of available wireless networks, click the wireless network you would like to connect to, then click **Connect**.
4. You may be prompted to enter a security key in order to connect to the network.
5. Enter in the security key corresponding to the wireless network, and click **OK**.

##### Windows Vista

1. Open Connect to a Network by clicking the **Start Button**.  and then click **Connect To**.
2. In the **Show** list, click **Wireless**.
3. In the list of available wireless networks, click the wireless network you would like to connect to, then click **Connect**.
4. You may be prompted to enter a security key in order to connect to the network.
5. Enter in the security key corresponding to the wireless network, and click **OK**.

##### Windows XP

1. Right-click the network icon in the notification area, then click **View Available Wireless Networks**.
2. In **Connect to a Network**, under **Available Networks**, click the wireless network you would like to connect to.
3. You may be prompted to enter a security key in order to connect to the network.
4. Enter in the security key corresponding to the wireless network, and click **Connect**.

### Federal Communication Commission Interference Statement

This equipment has been tested and found to comply with the limits for a Class B digital device, pursuant to Part 15 of the FCC Rules. These limits are designed to provide reasonable protection against harmful interference in a residential installation. This equipment generates uses and can radiate radio frequency energy and, if not installed and used in accordance with the instructions, may cause harmful interference to radio communications. However, there is no guarantee that interference will not occur in a particular installation. If this equipment does cause harmful interference to radio or television reception, which can be determined by turning the equipment off and on, the user is encouraged to try to correct the interference by one of the following measures: Reorient or relocate the receiving antenna.

Increase the separation between the equipment and receiver.

Connect the equipment into an outlet on a circuit different from that to which the receiver is connected.

Consult the dealer or an experienced radio/TV technician for help.

FCC Caution: Any changes or modifications not expressly approved by the party responsible for compliance could void the user's authority to operate this equipment.

This device complies with Part 15 of the FCC Rules. Operation is subject to the following two conditions: (1) This device may not cause harmful interference, and (2) this device must accept any interference received, including interference that may cause undesired operation.

### IMPORTANT NOTE:

#### FCC Radiation Exposure Statement:

This equipment complies with FCC radiation exposure limits set forth for an uncontrolled environment. This equipment should be installed and operated with minimum distance 20cm between the radiator & your body.

This transmitter must not be co-located or operating in conjunction with any other antenna or transmitter.

The availability of some specific channels and/or operational frequency bands are country dependent and are firmware programmed at the factory to match the intended destination. The firmware setting is not accessible by the end user.

### Europe – EU Declaration of Conformity

This device complies with the essential requirements of the R&TTE Directive 1999/5/EC. The following test methods have been applied in order to prove presumption of conformity with the essential requirements of the R&TTE Directive 1999/5/EC:

#### EN60950-1:2006+A11:2009

Information technology equipment - Safety Part 1: General requirements

#### EN 301 489-1 V1.8.1 (2008-04)

Electromagnetic compatibility and Radio spectrum Matters (ERM); ElectroMagnetic Compatibility (EMC) standard for radio equipment and services; Part 1: Common technical requirements

#### EN 301 489-17 V2.1.1 (2009-05)

Electromagnetic compatibility and Radio spectrum Matters (ERM); ElectroMagnetic Compatibility (EMC) standard for radio equipment; Part 17: Specific conditions for 2,4 GHz wideband transmission systems, 5 GHz high performance RLAN equipment and 5,8 GHz Broadband Data Transmitting Systems

#### EN55022: 2006+A1:2007, Class B

Information technology equipment - Radio disturbance characteristics - Limits and methods of measurement CISPR 22:2005 (Modified)

#### EN61000-3-2: 2006+A1:2009+A2:2009, Class A

Electromagnetic compatibility (EMC) Part 3-2: Limits - Limits for harmonic current emissions (equipment input current  $\leq$  16 A per phase)

#### EN61000-3-3: 2008

Electromagnetic compatibility (EMC) Part 3-3: Limits - Limitation of voltage changes, voltage fluctuations and flicker in public low-voltage supply systems, for equipment with rated current  $\leq$  16 A per phase and not subject to conditional connection

#### EN61000-4-2: 2009

Electromagnetic compatibility (EMC) — Part 4-2 : Testing and measurement techniques — Electrostatic discharge immunity test

#### EN61000-4-3: 2006+A1:2008+A2:2010

Electromagnetic compatibility (EMC) — Part 4-3: Testing and measurement techniques — Radiated, radio-frequency, electromagnetic field immunity test

**EN61000-4-4: 2004**

Electromagnetic compatibility (EMC) — Part 4-4: Testing and measurement techniques — Electrical fast transient/burst immunity test

**EN61000-4-5: 2006**

Electromagnetic compatibility (EMC) — Part 4-5: Testing and measurement techniques — Surge immunity test

**EN61000-4-6: 2009**

Electromagnetic compatibility (EMC) — Part 4-6: Testing and measurement techniques — Immunity to conducted disturbances, induced by radio-frequency fields

**EN61000-4-11: 2004**

Electromagnetic compatibility (EMC) — Part 4-11: Testing and measurement techniques — Voltage dips, short interruptions and voltage variations immunity tests

**EN 300 328 V1.7.1 (2006-10)**

Electromagnetic compatibility and Radio spectrum Matters (ERM); Wideband transmission systems; Data transmission equipment operating in the 2,4 GHz ISM band and using wide band modulation techniques; Harmonized EN covering essential requirements under article 3.2 of the R&TTE Directive

**EN62311:2008**

Assessment of electronic and electrical equipment related to human exposure restrictions for electromagnetic fields (0 Hz - 300 GHz)

This device is a 2.4 GHz wideband transmission system (transceiver), intended for use in all EU member states and EFTA countries, except in France and Italy where restrictive use applies.

In Italy the end-user should apply for a license at the national spectrum authorities in order to obtain authorization to use the device for setting up outdoor radio links and/or for supplying public access to telecommunications and/or network services.

This device may not be used for setting up outdoor radio links in France and in some areas the RF output power may be limited to 10 mW EIRP in the frequency range of 2454 – 2483.5 MHz. For detailed information the end-user should contact the national spectrum authority in France.



Český [Czech]	<i>TRENDware</i> tímto prohlašuje, že tento TEW-736RE je veshodě se základnímipožadavky a dalšímipříslušnýmiustanovenímisměrnice 1999/5/ES.
Dansk [Danish]	Undertegnede <i>TRENDware</i> erklærer herved, at følgende udstyr TEW-736RE overholder de væsentlige krav og øvrige relevante krav i direktiv 1999/5/EF.
Deutsch [German]	Hiermit erkläre <i>TRENDware</i> , dass sich das Gerät TEW-736RE in Übereinstimmung mit den grundlegenden Anforderungen und den übrigen einschlägigen Bestimmungen der Richtlinie 1999/5/EG befindet.
Eesti [Estonian]	Käesolevaga kinnitab <i>TRENDware</i> seadme TEW-736RE vastavust direktiivi 1999/5/EÜ põhinõuetele ja nimetatud direktiivi tulenevate teiste eesajakohtas esätetele.
English	Hereby, <i>TRENDware</i> declares that this TEW-736RE is in compliance with the essential requirements and other relevant provisions of Directive 1999/5/EC.
Español [Spanish]	Por medio de la presente <i>TRENDware</i> declara que el TEW-736RE cumple con los requisitos esenciales y cualesquiera otras disposiciones aplicables o exigibles de la Directiva 1999/5/CE.
Ελληνική [Greek]	ΜΕ ΤΗΝ ΠΑΡΟΥΣΑ <i>TRENDware</i> ΔΗΛΩΝΕΙ ΟΤΙ ΤΟ TEW-736RE ΣΥΜΜΟΡΦΩΝΕΤΑΙ ΠΡΟΣ ΤΙΣ ΟΥΣΙΩΔΕΙΣ ΑΠΑΙΤΗΣΕΙΣ ΚΑΙ ΤΙΣ ΛΟΙΠΕΣ ΣΧΕΤΙΚΕΣ ΔΙΑΤΑΞΕΙΣ ΤΗΣ ΟΔΗΓΙΑΣ 1999/5/ΕΚ.
Français [French]	Par la présente <i>TRENDware</i> déclare que l'appareil TEW-736RE est conforme aux exigences essentielles et aux autres dispositions pertinentes de la directive 1999/5/CE.

 Italiano [Italian]	Con la presente <i>TRENDware</i> dichiara che questo TEW-736RE è conforme ai requisiti essenziali delle altre disposizioni pertinenti stabilite dalla direttiva 1999/5/CE.
 Latviski [Latvian]	Ar šo <i>TRENDware</i> deklarē, ka TEW-736RE atbilst Direktīvas 1999/5/EK būtiskajām prasībām un cietīmar to saistītajiem noteikumiem.
 Lietuvių [Lithuanian]	Šiuo <i>TRENDware</i> deklaruoja, kad šis TEW-736RE atitinka esminius reikalavimus ir kitas 1999/5/EB Direktyvos nuostatas.
 Nederlands [Dutch]	Hierbij verklaart <i>TRENDware</i> dat het toestel TEW-736RE in overeenstemming is met de essentiële eisen en de andere relevante bepalingen van richtlijn 1999/5/EG.
 Malti [Maltese]	Hawn hekk, <i>TRENDware</i> jiddikjara li dan TEW-736RE jikkonforma mal-ħtiġijiet essenzjali u ma provvedimentio ħrajn rilevanti li hemm fid-Direttiva 1999/5/EC.
 Magyar [Hungarian]	Alulírott, <i>TRENDware</i> nyilatkozom, hogy a TEW-736RE megfelel a vonatkozó alapvető követelményeknek és az 1999/5/EC irányelvével összhangban.
 Polski [Polish]	Niniejszym <i>TRENDware</i> oświadcza, że TEW-736RE jest zgodny z zasadniczymi wymogami oraz pozostałymi istotnymi postanowieniami Dyrektywy 1999/5/EC.
 Português [Portuguese]	<i>TRENDware</i> declara que este TEW-736RE está conforme com os requisitos essenciais e outras disposições da Directiva 1999/5/CE.
 Slovensko [Slovenian]	<i>TRENDware</i> izjavlja, da je ta TEW-736RE v skladu z bistvenimi zahtevami in ostalimi relevantnimi določili direktive 1999/5/ES.
 Slovensky [Slovak]	<i>TRENDware</i> týmto vyhlasuje, že TEW-736RE spĺňa základné požiadavky a všetky príslušné ustanovenia Smernice 1999/5/ES.
 Suomi [Finnish]	<i>TRENDware</i> vakuuttaa täten että TEW-736RE tyyppinen laite on direktiivin 1999/5/EY oleellisten vaatimusten ja sitä koskevien direktiivin muiden ehtojen mukainen.
 Svenska [Swedish]	Härmed intygar <i>TRENDware</i> att denna TEW-736RE står i överensstämmelse med de väsentliga egenskapskrav och övriga relevanta bestämmelser som framgår av direktiv 1999/5/EG.

## Limited Warranty

TRENDnet warrants its products against defects in material and workmanship, under normal use and service, for the following lengths of time from the date of purchase.

### TEW-736RE – 3 Years Warranty

AC/DC Power Adapter, Cooling Fan, and Power Supply carry 1 year warranty.

If a product does not operate as warranted during the applicable warranty period, TRENDnet shall reserve the right, at its expense, to repair or replace the defective product or part and deliver an equivalent product or part to the customer. The repair/replacement unit's warranty continues from the original date of purchase. All products that are replaced become the property of TRENDnet. Replacement products may be new or reconditioned. TRENDnet does not issue refunds or credit. Please contact the point-of-purchase for their return policies.

TRENDnet shall not be responsible for any software, firmware, information, or memory data of customer contained in, stored on, or integrated with any products returned to TRENDnet pursuant to any warranty.

There are no user serviceable parts inside the product. Do not remove or attempt to service the product by any unauthorized service center. This warranty is voided if (i) the product has been modified or repaired by any unauthorized service center, (ii) the product was subject to accident, abuse, or improper use (iii) the product was subject to conditions more severe than those specified in the manual.

Warranty service may be obtained by contacting TRENDnet within the applicable warranty period and providing a copy of the dated proof of the purchase. Upon proper submission of required documentation a Return Material Authorization (RMA) number will be issued. An RMA number is required in order to initiate warranty service support for all TRENDnet products. Products that are sent to TRENDnet for RMA service must have the RMA number marked on the outside of return packages and sent to TRENDnet prepaid, insured and packaged appropriately for safe shipment. Customers shipping from outside of the USA and Canada are responsible for return shipping fees. Customers shipping from outside of the USA are responsible for custom charges, including but not limited to, duty, tax, and other fees.

**WARRANTIES EXCLUSIVE: IF THE TRENDNET PRODUCT DOES NOT OPERATE AS WARRANTED ABOVE, THE CUSTOMER'S SOLE REMEDY SHALL BE, AT TRENDNET'S OPTION, REPAIR OR REPLACE. THE FOREGOING WARRANTIES AND REMEDIES ARE EXCLUSIVE AND ARE IN LIEU OF ALL OTHER WARRANTIES, EXPRESSED OR IMPLIED, EITHER IN FACT OR BY OPERATION OF LAW, STATUTORY OR OTHERWISE, INCLUDING WARRANTIES OF MERCHANTABILITY AND FITNESS FOR A PARTICULAR PURPOSE.**

TRENDNET NEITHER ASSUMES NOR AUTHORIZES ANY OTHER PERSON TO ASSUME FOR IT ANY OTHER LIABILITY IN CONNECTION WITH THE SALE, INSTALLATION MAINTENANCE OR USE OF TRENDNET'S PRODUCTS.

TRENDNET SHALL NOT BE LIABLE UNDER THIS WARRANTY IF ITS TESTING AND EXAMINATION DISCLOSE THAT THE ALLEGED DEFECT IN THE PRODUCT DOES NOT EXIST OR WAS CAUSED BY CUSTOMER'S OR ANY THIRD PERSON'S MISUSE, NEGLIGENCE, IMPROPER INSTALLATION OR TESTING, UNAUTHORIZED ATTEMPTS TO REPAIR OR MODIFY, OR ANY OTHER CAUSE BEYOND THE RANGE OF THE INTENDED USE, OR BY ACCIDENT, FIRE, LIGHTNING, OR OTHER HAZARD.

LIMITATION OF LIABILITY: TO THE FULL EXTENT ALLOWED BY LAW TRENDNET ALSO EXCLUDES FOR ITSELF AND ITS SUPPLIERS ANY LIABILITY, WHETHER BASED IN CONTRACT OR TORT (INCLUDING NEGLIGENCE), FOR INCIDENTAL, CONSEQUENTIAL, INDIRECT, SPECIAL, OR PUNITIVE DAMAGES OF ANY KIND, OR FOR LOSS OF REVENUE OR PROFITS, LOSS OF BUSINESS, LOSS OF INFORMATION OR DATE, OR OTHER FINANCIAL LOSS ARISING OUT OF OR IN CONNECTION WITH THE SALE, INSTALLATION, MAINTENANCE, USE, PERFORMANCE, FAILURE, OR INTERRUPTION OF THE POSSIBILITY OF SUCH DAMAGES, AND LIMITS ITS LIABILITY TO REPAIR, REPLACEMENT, OR REFUND OF THE PURCHASE PRICE PAID, AT TRENDNET'S OPTION. THIS DISCLAIMER OF LIABILITY FOR DAMAGES WILL NOT BE AFFECTED IF ANY REMEDY PROVIDED HEREIN SHALL FAIL OF ITS ESSENTIAL PURPOSE.

Governing Law: This Limited Warranty shall be governed by the laws of the state of California.

Some TRENDnet products include software code written by third party developers. These codes are subject to the GNU General Public License ("GPL") or GNU Lesser General Public License ("LGPL").

Go to <http://www.trendnet.com/gpl> or <http://www.trendnet.com> Download section and look for the desired TRENDnet product to access to the GPL Code or LGPL Code. These codes are distributed WITHOUT WARRANTY and are subject to the copyrights of the developers. TRENDnet does not provide technical support for these codes. Please go to <http://www.gnu.org/licenses/gpl.txt> or <http://www.gnu.org/licenses/lgpl.txt> for specific terms of each license.





## Product Warranty Registration

Please take a moment to register your product online.  
Go to TRENDnet's website at <http://www.trendnet.com/register>

TRENDnet  
20675 Manhattan Place  
Torrance, CA 90501. USA