

kaiser baas™



User Manual

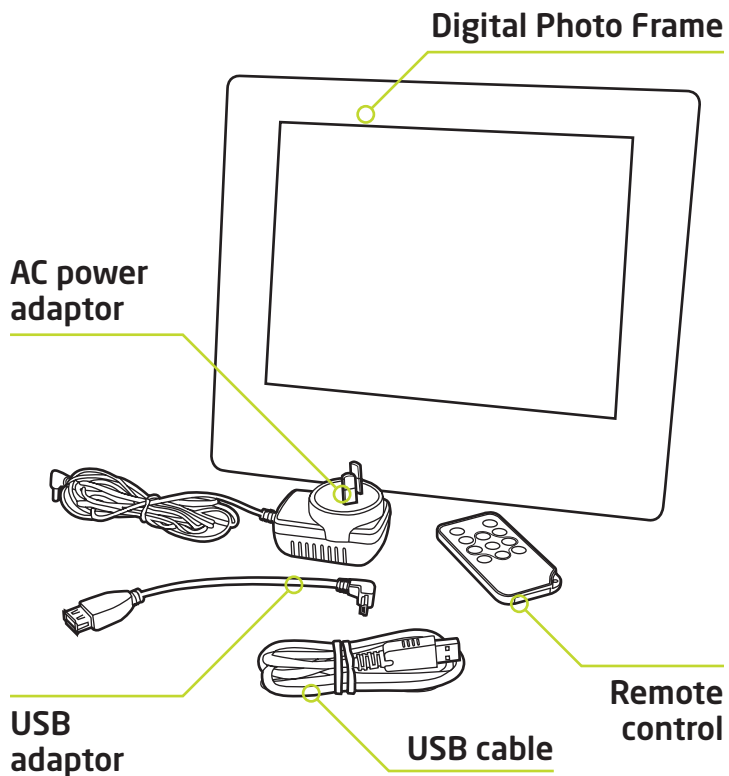
Digital Photo Frame Ultra Slim LED

Contents

1. What's in the box.....	2
2. Attaching the stand.....	3
3. Connecting the power.....	4
4. Touch button controls.....	5
5. Remote control.....	6
6. Loading to the on-board memory.....	7
7. Playing photos from a USB stick.....	8
8. Playing photos from an SD card.....	9
9. Photo frame interface.....	10
10. Setup menu.....	14
11. Technical specifications.....	16

1. What's in the box

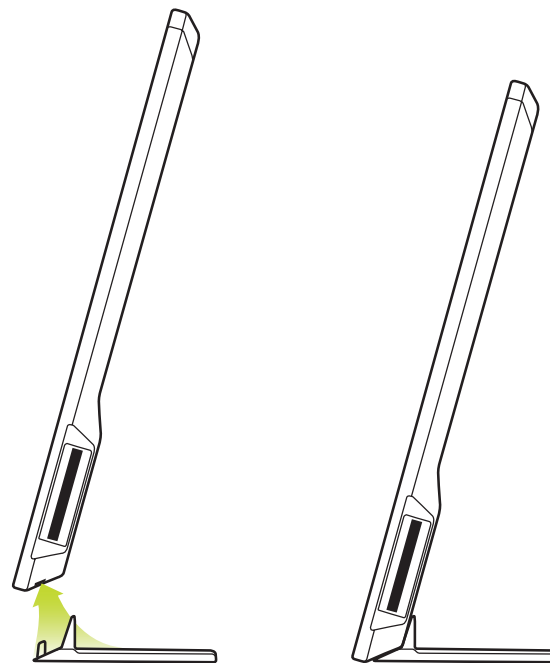
The packaging includes the following contents:



2. Attaching the stand

The Digital Photo Frame is supplied with a magnetic stand.

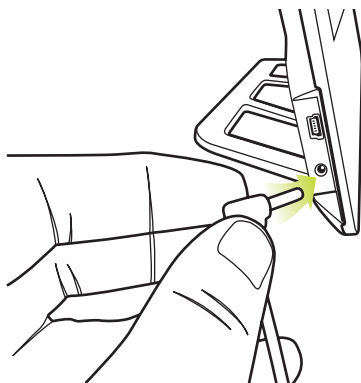
Simply fit the grooves on the stand to the corresponding slots on the base of the photo frame and it will clip easily into place.



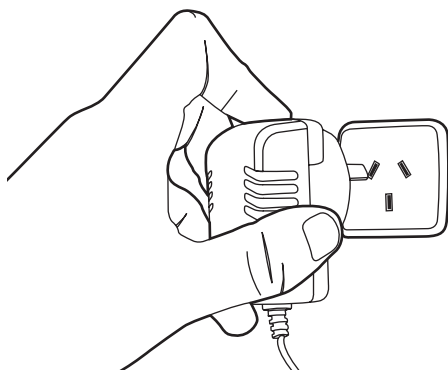
3. Connecting the power

To connect the power to the Digital Photo Frame:

1. Connect the power adaptor to the DC 5V input on the photo frame



2. Connect the power adaptor to a mains power point

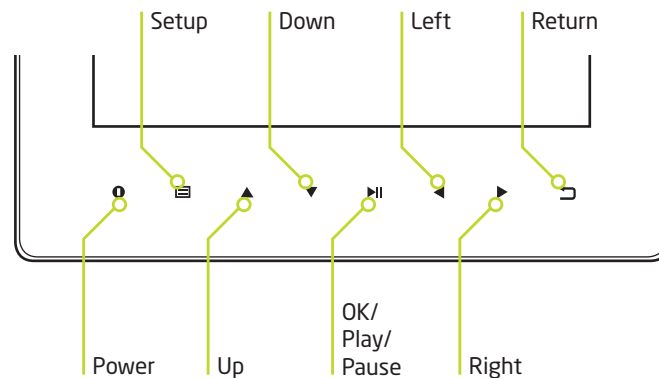


4. Touch button controls

The Digital Photo Frame features touch button controls on the front of the panel, providing easy operation and photo navigation.

A light, simple touch will activate and illuminate the controls.

The buttons are laid out as follows:

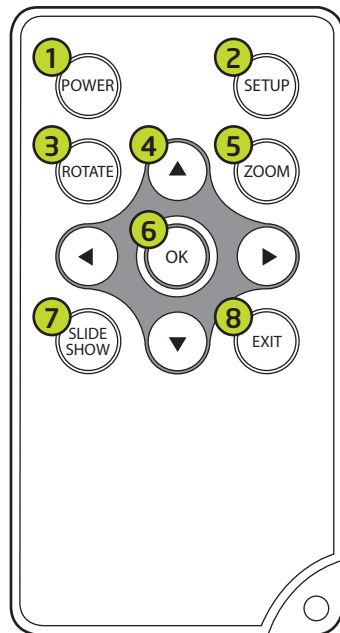


Turn on the Digital Photo Frame by pressing the 'POWER' button on the panel or remote control.

5. Remote control

The Digital Photo Frame includes a remote with the following functions:

1. POWER : Power On/Off
2. SETUP: Go directly to Setup mode
3. ROTATE: When a slideshow is paused, press 'ROTATE' to rotate picture 90° clockwise
4. Arrow keys: Use to navigate between menus and through slideshows
5. ZOOM: When a slideshow is paused, press 'ZOOM' to magnify picture display size
6. OK: Press to confirm, play or pause. During play mode, press this button to pause, press again to resume
7. SLIDESHOW: Press to start or pause a slideshow.
8. EXIT: Press to return to upper page or enter main menu



6. Loading to the on-board memory

The Digital Photo Frame has 2GB on-board memory for storing up to 1,000 photos.

The easiest way to load photos onto the on-board memory is to connect directly to the computer using the supplied USB cable.

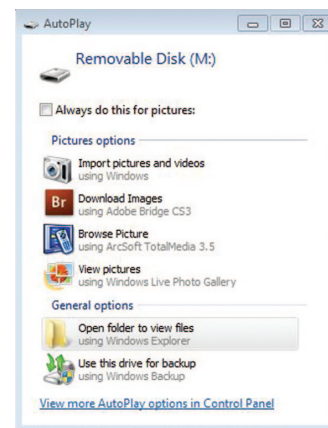
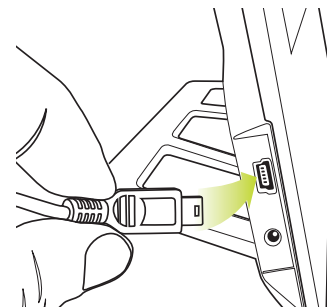
Make sure the power is connected to the photo frame before starting.

Connect the mini end of the USB cable to the mini USB port on the Digital Photo Frame. Connect the other end to a USB port on your computer.

A dialog box similar to the one on the right should appear on your computer.

Select '**Open folder to view files**'. Then, simply copy the photos you would like to this folder.

They will now be stored on the photo frame's on-board memory.

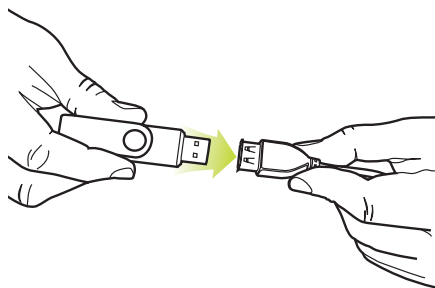


7. Playing photos from a USB stick

To display photos on the Digital Photo Frame from a USB stick, first you must copy the files you wish to view from your computer to the USB stick.

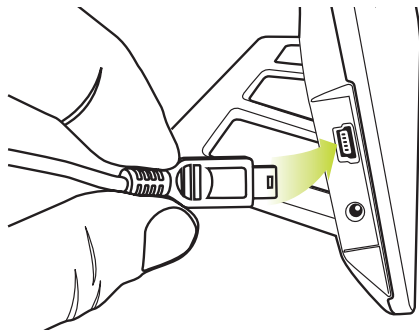
Connect the USB stick with your photos to the supplied USB adaptor.

It should clip easily into place.



Connect the other end of the USB adaptor to the mini USB port on the Digital Photo Frame.

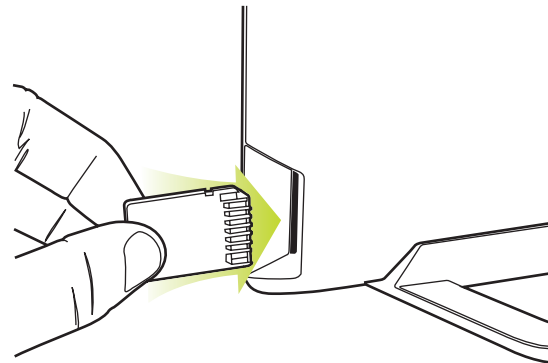
A slideshow of your photos will then automatically start.



8. Playing photos from a memory card

To display photos on the Digital Photo Frame from an SD, MMC or MS card, first you must copy the files you wish to view from your computer to the card. Alternatively, you can load photos directly from a digital camera, photo scanner or other photo device that uses a memory card.

Simply remove the card from your computer or digital camera, then insert it into the memory card slot on the Digital Photo Frame with the front of the card facing the front of the photo frame, as shown below:



A slideshow of the photos loaded onto the memory card should automatically start.

9. Photo frame interface

Turn on the Digital Photo Frame by pressing the power button on the remote control or touch panel. The **kaiser baas** logo will appear. A slideshow will play automatically if there are pictures on the on-board memory, memory card or USB stick memory.

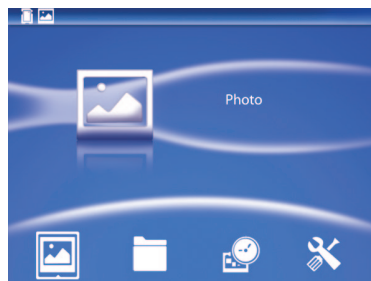
To play images from a different device

To play images from a different device (eg. change from on-board memory to a USB memory stick), press the **'RETURN'** or **'EXIT'** button three times to access the menu.



Use **▲▼◀▶** to select (Built-in, USB, SD, MMC or SDHC), then press **'OK'** to select the device you want.

After selecting the device, a menu will appear giving you the option of Photo, File, Calendar or Setup. Press **'OK'** on Photo to view photos from your chosen device.



A screen will then appear showing thumbnails of the first nine photos on the chosen device. To view a photo full screen, select the photo and press the **'OK'** button.

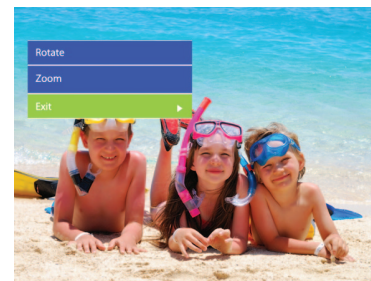


Rotate or zoom a photo

To rotate a photo, pause the slideshow, press the **'ROTATE'** button and the photo will rotate 90 degrees clock-wise.

To zoom in on a photo press the **'ZOOM'** button. The photo will then zoom in. Use the **▲▼◀▶** buttons to navigate around the photo.

Both options can also be accessed via the setup menu by pressing the **'SETUP'** button.



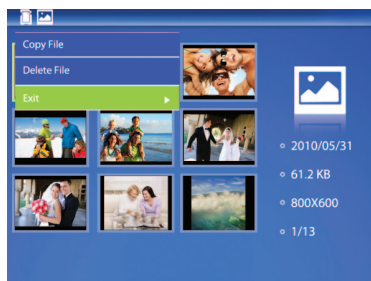
Slideshow

In thumbnail mode, press the 'OK' button twice to start a slideshow of the photos with transitions.



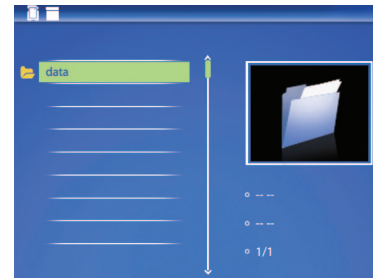
Copy / Delete files

In thumbnail mode, press the 'SETUP' button to bring up the copy or delete menu. Select either 'Copy File' or 'Delete File' using the buttons and select using 'OK'. The file will now be copied to the frame's internal memory



File Manager

Select the 'FILE' option from the main menu to bring up the file manager. The file manager lets you delete or copy files on your chosen memory storage. To copy or delete files, press the 'SETUP' button to bring up the menu.



Calendar

Press Calendar from the main menu, press 'OK' to access the calendar with clock. You will see a photo slideshow play on the left. Use the arrow keys to scroll through the dates on the calendar.



10. Setup menu

To enter the setup menu, select 'SETUP' from the main menu and then press 'OK'. Use ▲▼ to select the item you want to set up. Press 'OK' to show the sub menu, select with ▲▼ then press 'OK' to confirm. Exit menu at any time by pressing the 'EXIT' button.

The menu options are:

Language: English, French, Italian, German, Spanish, Greek

Slide mode: Single window, Four windows and Triple windows

Slide speed: 3, 5, 15, 30 seconds, 1, 5, 15, 30 minutes and 1 hour

Photo effect: Colour, Mono, Sepia

Slide effect: Random, Split horizontal in/out, Jalousie, Split vertical in/out, Radiation, Surround, Fade, Right/Next refresh, On pan, Roll from down to up, Roll from up to down, Brick

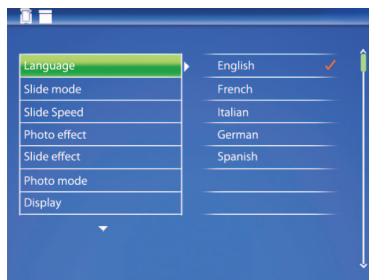
Photo mode: Auto fit, Optimal, full

Display:

Contrast: Use ◀▶ to select between 0 (lowest) and 40 (highest).

Brightness: Use ◀▶ to select between 0 (lowest) and 40 (highest).

Saturation: Use ◀▶ to select between 0 (lowest) and 40 (highest).



Tint: Use ◀▶ to select between 0 (lowest) and 40 (highest).

Set time/date: Press 'OK' to choose setup items as follows: Year, Month, Date, Hour, Minute, Second, Save time, adjust with ◀▶, press 'OK' to confirm, 'RETURN' to quit.

Set Time format: 12 or 24 hour, press 'OK', select with ▼▲, press 'OK' to confirm.

Auto Power On: Select a time to automatically turn the frame on.

Auto Power Off: Select a time to automatically turn the frame off.

Format built-in memory: Format (clear) in-built memory.

Reset setting: Select to reset to factory default settings.

Exit: Exit the setup menu.

11. Product specifications

Screen size	10 inch
Screen type	TFT digital display
Resolution	1024 x 768
Aspect ratio	4:3
Internal memory	2GB
Brightness	200 – 250CD/m ²
Contrast	480 – 600:1
Photo file format	JPEG
Memory card support	MMC, MS, SD, SDHC (maximum 16GB)
USB	USB 2.0 Host, Mini USB
Power	5V 1.5A

kaiser baasTM