



**Domestic Fans - VENTS - MA01 Window Fan - auto louvres**

**Applications**

- Continuous or periodic exhaust ventilation of bathroom, showers, kitchens and other utility spaces.
- For mounting in windows.

**Design**

- Modern design and aesthetic look.
- The casing and the impeller are made of high-quality durable ABS plastic, UV resistant.
- The clever impeller design makes for high fan efficiency high and long service life.
- The fan and motor are especially designed for silent operation.
- Fan is equipped with a thermal actuator that provides smooth opening and shutting of automatic louver shutters for air back flow preventing.
- Protection rating IP 24.

**Motor**

- Reliable and low-watt electric motor.
- Designed for continuous operation and requires no maintenance.
- Equipped with overheating protection.
- The motor is equipped with ball bearings for long service life (approx 40,000 hours) and fan mounting at any angle. The bearings are maintenance-free and contain enough grease for the entire operating period.

**Control**

- The fan can be controlled by a room light switch. It is not included in the delivery package.
- Speed control is possible through a thyristor speed controller (eg VERS-1-400). Several fans may be connected to the same regulator unit.

**Mounting features**

- The fan is mounted directly into the window opening (see next page for mounting instructions).



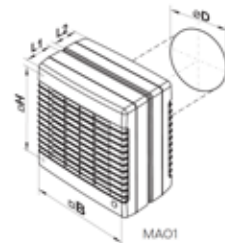
MA01 series Fan



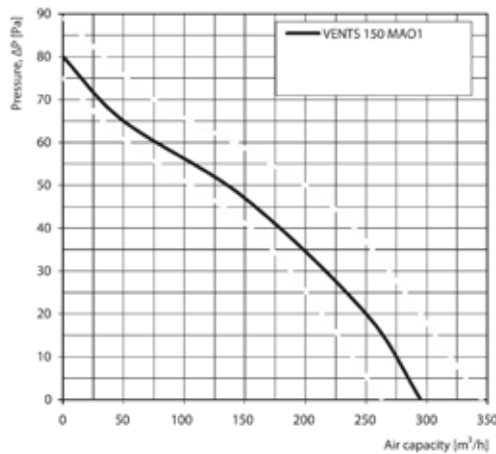
L - Ball bearings standard

Specifications								
Type	Voltage at 50Hz V	Power W	Consumption current A	rpm	Extract capacity m³/h	Air pressure Pa	Noise level 3m dBA	Weight kg
VE150MA01 L	220-240	26	0.13	2400	295	80	41	1.53

Dimensions, mm							
Type	ØD	B	H	H1	L1	L2	
VE150MA01 L	150	210	195	-	66	60	



**Performance Graph**



VEMA01 example



MA01 Fans continued on next page

Due to a policy of continuous development, prices and specifications are subject to change without notice. Prices are trade and exclude GST.

Smooth-Air <b>Christchurch:</b> <b>Wellington:</b> <b>Auckland:</b>	<b>0800 SMOOTH</b> (0800 766 684) 264 Annex Rd, PO Box 8358, <b>Riccarton</b> 10a Te Puni St, <b>Petone</b> (PO Box 8358, Chch) 6 Stanway Pl, PO Box 12-243, <b>Penrose</b>	www.smooth-air.co.nz Ph +64 3 343 6184 Ph +64 4 566 7969 Ph +64 9 579 3257	sales@smooth-air.co.nz Fax +64 3 343 6004 Fax +64 4 566 3143 Fax +64 9 579 3259
--	--	---	--

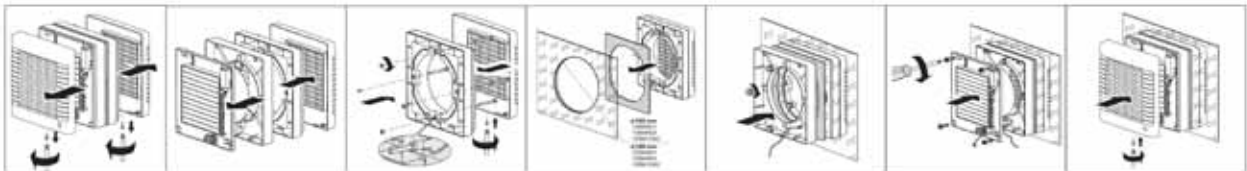
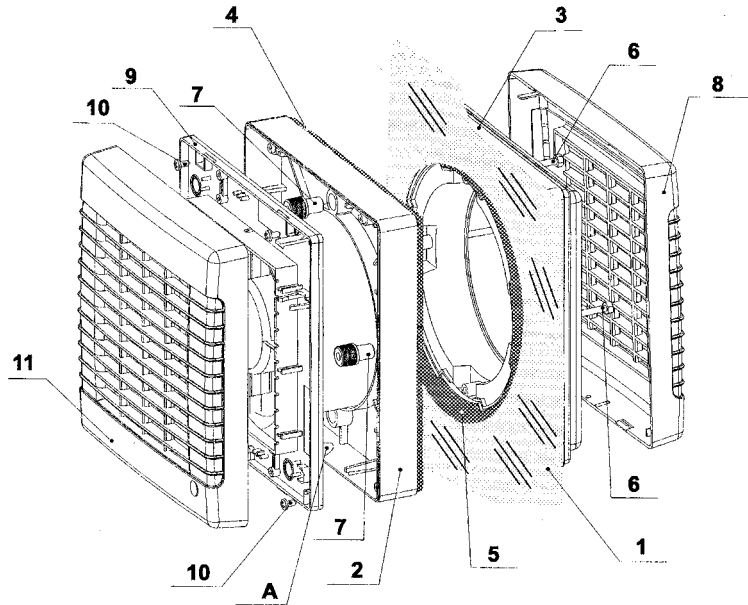


Domestic Fans - VENTS - MA01 Window Fan - auto louvres (continued)

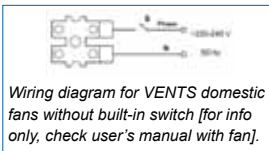
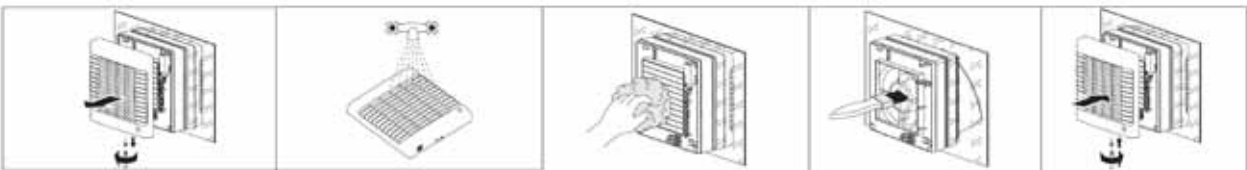


To install VE150MA01

1. Cut a 180mm dia hole in the wall or window (or 160mm for VE125MA01)
2. Make a slot A in detail 2 for the power cord.
3. Mount detail 2 from the inner side and detail 3 from the outside, together with rubber gaskets 4 & 5.
4. Fix details 2&3 with screws 6&7.
5. Place grille 8 to the outside.
6. Install fan body 9 to the inner side with screws 10 after passing power cord through slot A.
7. Mount fan cover 11.



To clean VE150MA01



Accessories

Speed controllers



See also Price Catalogue p17

Due to a policy of continuous development, prices and specifications are subject to change without notice.

Smooth-Air  
**Christchurch:** 0800 SMOOTH (0800 766 684)  
 264 Annex Rd, PO Box 8358, Riccarton  
**Wellington:** 10a Te Puni St, Petone (PO Box 8358, Chch)  
**Auckland:** 6 Stanway Pl, PO Box 12-243, Penrose

www.smooth-air.co.nz  
 Ph +64 3 343 6184  
 Ph +64 4 566 7969  
 Ph +64 9 579 3257

sales@smooth-air.co.nz  
 Fax +64 3 343 6004  
 Fax +64 4 566 3143  
 Fax +64 9 579 3259



**Domestic Fans - VENTS - VVR Window/Wall Fan - auto louvres**

36a

**Applications**

- Continuous or periodic exhaust ventilation of bathroom, showers, kitchens and other utility spaces.
- For mounting in windows and walls.

**Design**

- Modern design and aesthetic look.
- The casing and the impeller are made of high-quality durable ABS plastic, UV resistant.
- The clever impeller design makes for high fan efficiency high and long service life.
- The fan and motor are especially designed for silent operation.
- Equipped with automatic louver shutter for air back flow prevention.
- Protection rating IP 24.

**Motor**

- Reliable and low-watt electric motor.
- Designed for continuous operation and requires no maintenance.
- Equipped with overheating protection.
- Fans are equipped with a reversing motor for combination of air exhaust and air supply functions, with appropriate switch.

**Control:**

- The fan can be controlled by a standard light switch (not included).
- Speed control is possible through a thyristor speed controller (eg VERS-1-400). Several fans may be connected to the same regulator unit.

**Mounting features**

- The fan can be mounted directly into the window opening.



VVR series fan



Fan ON - louvre shutters OPEN



Fan OFF - louvre shutters CLOSED

**Specifications**

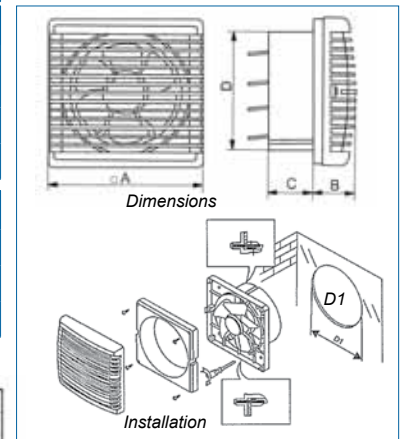
Type	Voltage at 50Hz V	Power W	rpm	Noise level 3m dBA	Outlet size (mm)
VEVVR180	220-240	25	1400	31	177
VEVVR230	220-240	30	1300	32	237

**Specifications**

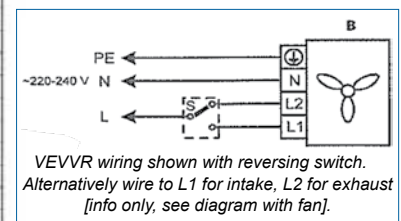
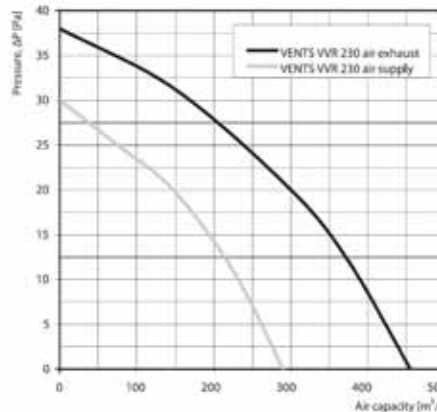
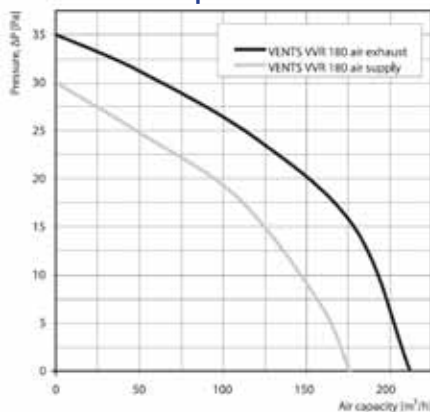
Type	Extract capacity m³/h extract / input	Air pressure Pa extract / input	Rotation direction extract / input
VEVVR180	212 / 176	35 / 30	left / right (reverse)
VEVVR230	455 / 290	38 / 30	left / right (reverse)

**Dimensions, mm**

Type	A	B	C	D	Installation hole D1
VEVVR180	230	65	87	177	dia 185 - 188mm
VEVVR230	295	74	85	237	dia 247 - 250mm



**Performance Graphs**



**Certification**



Due to a policy of continuous development, prices and specifications are subject to change without notice.

See also Price Catalogue p17

Smooth-Air <b>Christchurch:</b> <b>Wellington:</b> <b>Auckland:</b>	<b>0800 SMOOTH</b> (0800 766 684) 264 Annex Rd, PO Box 8358, <b>Riccarton</b> 10a Te Puni St, <b>Petone</b> (PO Box 8358, Chch) 6 Stanway Pl, PO Box 12-243, <b>Penrose</b>	www.smooth-air.co.nz Ph +64 3 343 6184 Ph +64 4 566 7969 Ph +64 9 579 3257	sales@smooth-air.co.nz Fax +64 3 343 6004 Fax +64 4 566 3143 Fax +64 9 579 3259
--	--	---	--