

Model : **MIC-4070D**

**DIGITAL LCR METER**

**OPERATION MANUAL**

- Inductance Measurement 0.1  $\mu$ H to 200H
- Capacitance Measurement 0.1pF to 20000  $\mu$ F
- Resistance Measurement 1m $\Omega$  to 20M $\Omega$
- Dissipation Factor Measurement

## **TABLE OF CONTENTS**

- ONE: INTRODUCTION**
  - 1.1 Inspection
  - 1.2 Included Items
  - 1.3 Unit Descriptions
- TWO: OPERATION AND MEASUREMENT**
  - 2.1 Warning
  - 2.2 Cautions
  - 2.3 875B Zero Adjustment and Impedance Measurement
    - 2.3.1 Zero Adjustment and Capacitance Measurement
    - 2.3.2 Zero Adjustment and Inductance Measurement
    - 2.3.3 Resistance Measurement
  - 2.4 Measurement Parameter Conversions
- THREE: SPECIFICATIONS**
  - 3.1 Power Source
  - 3.2 Instrument Specifications
  - 3.3 General Specifications
- FOUR: USER MAINTENANCE**
  - 4.1 Battery Replacement
  - 4.2 In Case of Difficulties

**FIVE: SERVICE INFORMATION**

## **ONE: INTRODUCTION**

Congratulations! You have just purchased some of the most advanced hand-held digital LCR meter available. This meter is sure to provide years of reliable service.

The MIC4070D is designed to measure the parameters of an impedance element with high accuracy and speed. Measurements of inductance, capacitance, resistance (equivalent series resistance) and dissipation factor are provided for over a broad band of ranges. In addition, you'll find that it is ideal for testing SMD type components. Plus, the instrument offers advanced features, such as the ability to perform precision measurements of very low resistances with the 2 ohm and 20ohm ranges, and ideal for high inductances with the 20H and 200H ranges, along with the unique drop-proof construction, combine to make the unit the most versatile handheld LCR meter available today.

With proper care and use, these meters can provide years of reliable operation. Therefore, it is very important to completely familiarize yourself with the instrument before attempted use.

Please read this manual carefully, paying particular attention to the safety section.

### **1.1 Inspection**

When you unpack your new Meter from its original packaging, carefully check each item for damage that may have occurred in shipment. If anything is damaged or missing, take the entire instrument, including the box and packing materials, back to the distributor from whom it was purchased, where they will either replace the missing or damaged item or the entire instrument.

### **1.2 Included Items**

Meter	Test Leads (1 pair)	Battery
-------	---------------------	---------

**1.3 Unit Description**

Please use the drawings of the MIC4070D, in conjunction with the following descriptions of the controls and connections to help familiarize you with the unit:

- (1) Liquid Crystal Display : Indicates the value of capacitance connected to the test inputs.
- (2) LCR/D Mode Switch : Selects either LCR or Dissipation Factor measurement mode.
- (3) Function/Range Switch : Selects the function and range for the desired measurement.
- (4) Common Terminal Slot : The negative (common) test connector for all measurements.
- (5) Positive Terminal Slot : The positive (high) test connector for all measurements.
- (6) Common Terminal Jack : The negative (low) banana jack for measurements requiring the use of test leads.
- (7) Positive Terminal Jack : The positive (high) banana jack for measurements requiring the use of test leads.
- (8) Battery Compartment : Access for the battery.
- (9) Tilt Stand : Used to hold the instrument at an angle on a level surface, or when reversed to hang it from a projection.
- (10) Zero Adjust : Control used to zero the display.
- (11) Power Switch : Turns power to the instrument on and off.

## TWO: OPERATION AND MEASUREMENT

### 2.1 **Warning**

Electricity can cause severe injuries or even death, sometimes even with relatively low voltages or currents.

Therefore it is vitally important that any electronic instruments such as these meters be totally understood before use.

Please do not use this instrument, or any other piece of electrical or electronic test equipment, without first thoroughly familiarizing yourself with its correct operation and use.

### 2.2 **Cautions**

- (1) **To obtain accurate impedance values, perform zero adjustment before measurements.**
- (2) Attempted measurement of charged capacitors will overload the instrument.
- (3) If a dead or partially discharged battery is left in the instrument for an extended period, damage to the unit could result from battery leakage. Therefore it is important to replace a discharged battery promptly. Please dispose of the used battery in a proper manner. Additionally, if the instrument will not be used for an extended period, always remove the battery from the unit and store it separately.
- (4) Do not use solvents or aromatic hydrocarbons to clean the instrument, or the plastic case may be damaged. If cleaning is necessary, use only a mild solution of warm water and soap.
- (5) **Capacitors are manufactured to operate under certain conditions. Since the meter may test a capacitor under different conditions than of the manufacturer, the values**

might not be identical. This is not due to meter error, just the method of test. Therefore, if this is the case, check the capacitor's dissipation factor ( $\leq 0.1$ ) and whether the test was conducted in series or parallel mode (ref. Section 3.6). Use the equations to convert between the modes. At this point, one should obtain a value to that stated on the capacitor.

- (6) To ascertain if the meter is accurate, please use a standard capacitor that states test conditions.

### **2.3 MIC4070D Zero Adjustments and Impedance Measurements**

#### **IMPORTANT INFORMATION:**

1. As an added feature, the MIC4070D has +/- offsets. The +/- offsets allow for measurements when the LCD is not at zero. The +/- offsets are applicable to components that are measured in the following modes: capacitor parallel (Cp), inductor series (Ls) and resistance series (Rs). The +/- offsets are not applicable for components that are tested Cs, Lp or Rp. To use this feature, just simply add/subtract the value from the measured value of a component.
2. For impedance measurements there are two different test modes: parallel and series. These distinct test modes obtain different results. Refer to section 2.4 for conversions.

#### **2.3.1 Zero Adjustment and Capacitance Measurement**

- (1) Set the power switch to the "on" position.
- (2) Set the mode switch to the "LCR" position.
- (3) Set the Function/Range switch to the appropriate capacitance range for the capacitor under test. If the capacitance value is unknown, select the 200pF range.

NOTE: If test leads will be used in the measurement, have them plugged in the banana jacks, but not connected.

**200pF, 2nF, 20nF, 200nF & 2μF Range (Cp):**

**Zero Adjustment (Cp Mode)**

- (4) Set the Capacitance meter to the selected Capacitance range.
- (5) Using a small, flat-blade screwdriver, slowly turn the "0 Adj" control to calibrate the display for a zero reading. Now the meter is calibrated for these four ranges.
- (6) Set the meter to proper capacitance range and go to step seven to measure capacitance.

**20μF, 200μF, 2mF & 20mF (Cs): Range**

**Zero Adjustment (Cs Mode)**

- (4) Set the capacitance meter to the 2μF Capacitance range.
- (5) Using a small, flat-blade screwdriver, slowly turn the "0 Adj" control to calibrate the display for a zero reading. Now the meter is calibrated for these four ranges.
- (6) Set the meter to proper capacitance range and go to step seven to measure capacitance.

**Capacitance & Dissipation Factor Measurements**

- (7) Discharge the capacitor to be measured.
- (8) Insert the capacitor leads into the component test sockets at the front of the meter. If the capacitor leads are too short, use the alligator clip leads provided with the instrument to connect to the capacitor. Be sure to observe the proper polarity if the capacitor is a polarized type.
- (9) Read the capacitance value in the display. If "1--" (a one with the following 3 digits blanked) is shown (which indicates an over-range reading), move the range switch to the next higher capacitance. If necessary, perform zero adjustment before measurement.
- (10) To measure the "Dissipation Factor" of the capacitor, set the



mode switch to the "D" position, and read the dissipation factor value in the display.

(11) ESR For capacitors

"Equivalent Series Resistance" is typically much larger than the actual "ohmic" series resistance of the wire leads and foils that are physically in series with the heart of a capacitor, because ESR includes also the effect of dielectric loss. SR is related to D by the formula  $ESR = R_s = D / \omega C_s$  (where  $\omega$  represents "omega" =  $2\pi$  times frequency). In 20mf range, the dissipation factor can be obtained by the formula  $D = \omega C_s R_s$  where  $C_s$  is the measured value and  $R_s$  is measured by  $2\Omega$  range.

NOTE: To avoid possible damage to the instrument, discharge all capacitors before attempting to measure the value or dissipation factor.

### **2.3.2 Zero Adjustment and Inductance Measurements**

#### **200 $\mu$ H, 2mH, 20mH, 200mH range (Ls):**

##### **Zero Adjustment & Measurements**

- (1) Set the power switch to the "on" position.
- (2) Set the mode switch to the "LCR" position.
- (3) Set the Function/Range switch to the appropriate range for the inductor under test. If the inductance value is unknown, select the 200 $\mu$ H range.

**NOTE: Each range must have zero adjustment performed.**

- (4) Using a short piece of wire, such as a paper clip, temporarily connect the positive and negative measurement terminals together. Alternatively, if the clip leads will be used for the measurement plug them into the banana jacks and connect the clips together.
- (5) Use a small, flat-blade screwdriver and slowly turn the "0 Adj"

control to calibrate the display for a zero reading. Remove the calibration short.

- (6) Insert the inductor leads into the component test sockets at the front of the meter. If the leads are too short, use the alligator clip leads provided with the instrument to connect to the inductor.
- (7) Read the inductance value in the display. If "1—" (a one with the following 3 digits blanked) is shown, move the range switch to the next higher range until the over range indication is gone from the display. Repeat steps 4-7.

**2H, 20H, 200H, range (Lp): Zero Adjustment & Measurements**

- (1) Set the power switch to "on" position.
- (2) Set the mode switch to the "LCR" position.

**NOTE: These three ranges (Lp mode) must be zero calibrated at 200mH range.**

- (3) Set the Function/Range switch to the 200mH range.
- (4) Using a short piece of wire, such as a paper clip, temporarily connect the positive and negative measurement terminals together. Alternatively, if the clip leads will be used for the measurement, plug them into the banana jacks and connect the clip together.
- (5) Use a small, flat-blade screwdriver and slowly turn the "0 Adj" control to calibrate the display for a zero reading. Remove the calibration short.
- (6) Insert the inductor leads into the component test sockets at the front of the meter. If the leads are too short, use the alligator clip leads provided with the instrument to connect to the inductor.
- (7) Read the inductance value in the display. If "1—" (a one with the following 3 digits blanked) is shown, move the range

switch to the next higher range until the over range indication is gone from the display and a value is obtained.

- (8) To measure the "Dissipation Factor" of the inductor, set the mode switch to the "D" position, and read the dissipation factor value in the display.

### **2.3.3 Resistance Measurements**

**NOTE:** A. The 2, 20, 200, 2K, 20K, 200K, ohm ranges of resistance needs to be zero adjusted separately.

B. To zero adjust the 2M ohm and 20M ohm ranges, set the range switch to the 200K ohm range and zero adjust.

- (1) Turn unit on.
- (2) Set the mode switch to the "LCR" position.
- (3) Set the Function/Range switch to the appropriate resistance range. If the value of resistance is unknown, select the 2 ohm range.
- (4) Using a short piece of wire, such as a paper clip, temporarily connect the positive and negative measurement terminals together. Alternatively, if the clip leads will be used for the measurement, plug them into the banana jacks and connect the clips together.
- (5) Use a small, flat-blade screwdriver and slowly turn the "O Adj" control to calibrate the display for a zero reading. Remove the calibration short.
- (7) Insert the resistor leads into the component test sockets at the front of the meter. If the leads are too short, use the alligator clip leads provided with the instrument to connect to resistor.

### **2.4 Measurement Parameter Conversions**

The parameter value for a component measured in a parallel

equivalent circuit and that value measured in a series equivalent circuit may be different from each other. This means that the parallel-measured capacitance (inductance) of any given capacitor (inductor) will not be equal to the series-measured capacitance (inductance) unless the dissipation factor of the capacitor (inductor) equals zero. The equations in the table below show the relationship between the parallel- and the series- measured parameters of any given components:

Dissipation Factor Equations  
(See table 1)

**E.G.1:** With a measurement frequency of 1K Hz, a parallel mode capacitance of 1000pF with a dissipation factor of 0.5 is equal to a series mode capacitance of 1250pF.

$$\begin{aligned} C_s &= (1 + D \times D) \times C_p \\ C_s &= (1 + 0.5 \times 0.5) \times 1000\text{pF} \\ C_s &= 1250\text{pF} \end{aligned}$$

**E.G.2:** With a measurement frequency of 1K Hz, a series inductance of 1000uH with a dissipation factor of 0.5 has a series resistance of 3.14 ohms.

$$\begin{aligned} R_s &= 2 \times 3.14 \times f \times L_s \times D \\ R_s &= 2 \times 3.14 \times 1\text{K} \times 1\text{m} \times 0.5 \\ R_s &= 3.14 \end{aligned}$$

However, at any given measurement frequency, the dissipation factor of a component is the same for both parallel equivalent and series equivalent circuits.

Additionally, the reciprocal of the dissipation factor (1/D) is equivalent to the quality factor (Q).

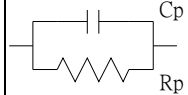

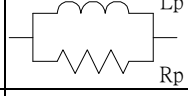
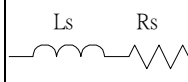
### THREE: SPECIFICATIONS

#### 3.1 Power Source

Battery Type: 006P 9V battery.  
Power Consumption's: 155mW

Section 2.4 Measurement Parameter Conversions

**Table 1. Dissipation Factor Equations**

Circuit Mode	Dissipation Factor	Conversion to other modes
<p>Cp mode</p> 	$D = \frac{1}{2\pi f C_p R_p} (= \frac{1}{Q})$	$C_s = (1 + D^2) C_p, R_s = \frac{D^2}{1 + D^2} R_p$
<p>Cs mode</p> 	$D = 2\pi f C_s R_s (= \frac{1}{Q})$	$C_p = \frac{1}{1 + D^2} C_s, R_p = \frac{1 + D^2}{D^2} R_s$
<p>Lp mode</p> 	$D = \frac{2\pi f L_p}{R_p} (= \frac{1}{Q})$	$L_s = \frac{1}{1 + D^2} L_p, R_s = \frac{D^2}{1 + D^2} R_p$
<p>Ls mode</p> 	$D = \frac{R_s}{2\pi f L_s} (= \frac{1}{Q})$	$L_p = (1 + D^2) L_s, R_p = \frac{1 + D^2}{D^2} R_s$



### 3.2 INSTRUMENT SPECIFICATIONS

Electrical Specifications

(See tables 2)

**NOTE:** (1) The test leads should be as short as possible to minimize the measurement error.

(2) For best accuracy, zero adjustment should be performed appropriately before testing.

**Table 2.**

#### CAPACITANCE

Range	*Accuracy	Resolution	Test Condition
200pf	1% + 2	0.1pf	Parallel Mode 1KHz, 0.5Vrms
2nf		1pf	
20nf		10pf	
200nf		100pf	
2µf		1000pf	
20µf		0.01µf	
200µf	2% + 10	0.1µf	Series Mode 120Hz, 10mArms
2mf		1µf	
20mf		10µf	

\*Accuracy is  $\pm$  ( % of reading + number of digits ) When  $D \leq 0.1$

#### DISIPATION FACTOR

Range	Accuracy			
	200pf	$2\text{nf} \leq C_x \leq 2\mu\text{f}$	$2\mu\text{f} < C_x \leq 2\text{mf}$	20mf
0 ~ 1.999	N.S.	$1\% + 10 + \frac{2000}{C_x}$	$2\% + 20 + \frac{2000}{C_x}$	N.S.

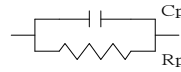
Accuracy is  $\pm$  ( % of reading + number of digits ).

C<sub>x</sub> is capacitance readout in counts.

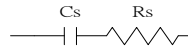
Accuracy is applied when C is from 20 to 100% of full scale range in series mode measurements.



Parallel Mode  $Dc = \frac{1}{2\pi f C_p R_p}$



Series Mode  $Dc = 2\pi f C_s R_s$



### RESISTANCE

Range	Accuracy	Resolution	Test Condition	
2Ω	1%+5	1mΩ	Series Mode 1KHz	10mArms
20Ω	1%+2	10mΩ		10mArms
200Ω		100mΩ		1mArms
2KΩ		1Ω		0.1mArms
20KΩ		10Ω		10μArms
200KΩ		100Ω		1μArms
2MΩ	2%+2	1KΩ	Parallel Mode	
20MΩ		10KΩ	1KHz, 0.5Vrms	

Accuracy is  $\pm$  ( % of reading + number of digits ) and is applied from 10 to 100% of full scale range in parallel mode measurements.

In series mode measurements, the compliance voltage (voltage drop on the device under test) should be less than 0.2 Vrms.

### INDUCTANCE

Range	Accuracy	Resolution	Test Condition	
200μH	2%+2	0.1μH	Series Mode	10mArms, 1KHz
2mH	1%+2	1μH		10mArms, 1KHz
20mH		10μH		1mArms, 1KHz
200mH		100μH		0.1mArms, 1KHz
2H	2%+2	1mH	Parallel Mode	
20H		10mH		

200H	3%+2	100mH	120Hz, 0.5Vrms
------	------	-------	----------------

Accuracy is  $\pm$  ( % of reading + number of digits ) When  $D \leq 0.1$ .  
The accuracy is applied from 10 to 100% of full scale range in parallel mode measurements.

#### DISSIPATION FACTOR

Range	Accuracy	
	0 ~ 1.999	$Lx \leq 200mH$
$1\% + 10 + \frac{2000}{Lx}$		$2\% + 20 + \frac{2000}{Lx}$

Accuracy is  $\pm$  ( % of reading + number of digits ).

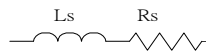
$Lx$  is inductance readout in counts.

Accuracy is applied when  $L$  is from 20 to 100% of full scale range in parallel mode measurements.

Parallel Mode  $D_L = 2\pi f \frac{Lp}{Rp}$



Series Mode  $D_L = \frac{Rs}{2\pi f Ls}$



NOTE : ALL THE ACCURACY IS GUARANTEED AT TEMPERATURE OF 15°C TO 28°C, RELATIVE HUMIDITY TO 80% AND HALF YEAR CALIBRATION CYCLE.

#### 3.3 GENERAL SPECIFICATIONS

Power	Single 9V 006P Battery
Display	0.5" digital height, 3 1/2 digits liquid crystal display with "LOBAT" and decimal annunciates
Low Battery Warning	Display will show "LOBAT" in the last 5% of Battery life

Current Consumption	17.3mA
Temperature	0°C ~ 40°C, Operating -20°C ~ 70°C, Storage
Dimensions	177×88×40mm
Weight	400 gram
Standard Accessories	Test Clips (red & black) 1 pair Operation Manual 1 piece
Optional Accessories	Measurement clip TL-06 for SMD type component

#### **FOUR: USER MAINTENANCE**

##### **4.1 Battery Replacement**

When the instrument displays the “LO BAT” indication, the battery must be replaced to maintain proper operation. Please perform the following steps to change the battery:

- (1) Remove the battery hatch by sliding it towards the bottom of the instrument.
- (2) Unsnap the battery clip from the old battery. Snap the clip in place on a new battery. Please dispose of used batteries in a proper manner.
- (3) Place the new battery in the battery compartment.
- (4) Replace the battery hatch by reversing the procedure used to remove it.

##### **4.2 In Case of Difficulties**

These meters are designed to be accurate, reliable, and easy-to-use. However, it is possible that you may experience difficulties during operation. If there appears to be any kind of problem during use of the instrument, please perform the following steps to help determine the source:

- (1) Reread the operating instructions. It is very easy to inadvertently make mistakes in operating procedure.
- (2) Inspect and check the continuity of the test leads. The instrument will not function properly with broken test leads.

(3) Remove and test the battery. The instrument will not function properly with a discharged battery.  
If the proceeding three steps fail to resolve the problem, please refer to the "Service Information" section or contact your nearest distributor.

NOTE: ATTEMPTED REPAIR, MODIFICATIONS, OR TAMPERING BY UNAUTHORIZED PERSONNEL WILL VOID THE WARRANTY.

### **EC Declaration of Conformity**

#### **-Electro Magnetic Compatibility- -Low Voltage Directive-**

The equipment herewith complies with the requirements of the EMC Directive 89/336/EEC and the LVD 73/23/EEC and 93/68/EEC.

Declares that this equipment conforms to the following product specifications:

EMC: CISPR22 : 1993, and EN 55022, 1994, Class B  
IEC 1000-4-2 : 1995, and prEN 50082-1, 1994-4KV CD, 8KC AD  
IEC 1000-4-3 : 1995, and prEN 50082-1, 1994-3V/m  
IEC 1000-4-4 : 1995, and IEC 801-4, 1988-1KV,5/50ns, 5KHz AC power port  
IEC 1000-4-5 : 1995, and prEN 50082-1, 1994, Surge-1KV, AC power port  
EN 60555-2 : 1987, Harmonics, Class A  
EN 60555-3 : 1987, Voltage Fluctuations  
Test Report Number : 500-8410-10 (EMI)  
500-8409-27 (EMS )

LVD: EN 61010-1/EN 61010-2-031  
Test Report Number : 97407-1 ( LVD )

Manufacture's Name : MOTECH INDUSTRIES INC.

Manufacture's Address : 6F, NO. 59 Tsao – Dih Woei,  
Wan Shun Liao, Shen Keng Hsiang,  
Taipei; Hsien 222, Taiwan, R.O.C.

Modification : The MIC-4070D is not designed for use with a AC to DC adaptor, only  
Just enough use with 9V 006P Battery. (please cancel item 3.1 on  
Page9 of operation manual).

Current Consumption : 10mA average (see manual page14). 17.3mA maxima  
Type of Equipment : Hand-held LCR Meter

