

900MHz Wireless **ERU-900 EMERGENCY RESPONSE UNIT**



**GETS
HELP
FAST!**



Range: Up to 1,000 Feet Indoors.

No Monitoring Fees!
NOW YOU CAN FEEL SAFE AND SECURE AT HOME



I'm so happy with the New **ERU-900**. Whenever there's an Emergency, a quick press of the pendant (wear it on your wrist, neck or handheld) sends the signal to "Get Help Fast!" — and trigger the caller to deliver my loved one's emergency message! The pendant is water resistant and can even be worn in shower or bathtub!

The **ERU-900** is so easy to use, patients or family record their own voice message (in any language) then enter the telephone, pager or cell phone numbers that they want it to call in the event of an emergency. When the **ERU-900** receives an Emergency Signal, it automatically delivers the pre-recorded message and will even continue to call back if the number is busy or if there is no answer.

The Good Part Is — when a called party answers they can "Listen In" and have a "2-Way" Conversation to determine what the emergency is all about.

The Best Part Is — with the **ERU-900** technology, I feel safe, secure and confident that the Call for Help message will get through; It's been tested to have an open air range of up to nearly a mile!

There are so many wonderful features with the **ERU-900**. Especially No Monitoring Fees! You will sleep well knowing **ERU-900** is awake 24-hours a day — 7 days a week.

Get the **ERU-900** for family, patients or friends.
You will be So Happy you did!

WHEN ACTIVATED...

The Emergency Response Unit automatically calls to deliver the message for help to:



Family or neighbors



Emergency services
(local regulations permitting)



Healthcare Providers



Cellular phones and
pagers

'Easy Programming' Display

Listen In Capability

EEPROM Memory

'Easy Programming' Display
LCD panel is used to display programming, test, and status information.

EEPROM Memory
Voice message and phone numbers remain stored even after total power failure.

"Listen In" Capability
Called party may "listen in" to voice and other sounds from caller.

2-Way Communication
Called party may initiate 2-way conversation mode.

Allows for 2-Way Communication

Remote Turn Off

Battery Backup

Remote Turn Off
Called party may deactivate dialer, which stops any further dialing of other programmed numbers.

Battery Backup (optional PP-1)
Battery backup will keep unit fully operational for a minimum of 24 hours during power outages.

Telephone Connection
Plugs directly into phone line. Tone or Pulse, Universal Dial Tone Technology allows use on phone systems worldwide.

Cordless Pendant Transmitter

The Long Range 900 megahertz Pendant Transmitter can be worn on wrist, necklace, or can be handheld or mounted (in bathroom etc.). Wristband and Necklace included.

The transmitter continuously sends a supervised signal every 30 seconds to the receiver-dialer unit to monitor the person wearing pendant.

Pressing the emergency button sends the signal and activates the dialer to call up to four of your pre-programmed numbers and delivers your emergency message. (Also, can trigger the optional enunciator alarm strobe.)

The pendant transmitter is attractive, compact and its long-life lithium battery provide years of dependable operation. Additional Accessories Available.



The ERU-900 can monitor up to 10 900MHz pendants and transmitters.

Order Information

Model	Description
ERU-900	Receiver/Dialer, Pendant Transmitter-wrist band, necklace, belt clip and power adapter
LP-900	Additional Pendant Transmitter
LT-900	Universal Transmitter for Sensor Pads, etc.
AT-900	Automatic "Man Down" Transmitter
CE-900	Wireless Enunciator Horn/Strobe
PP-1	24 Hour Battery Back up/recharging

See Emergency Caller Product Index and Price list for all accessories for Products and Systems!



Identifying the type of emergency is critical in sending the proper assistance. The ERU-900 allows for "Listen-In" as well as "2-way Communication" modes. The high sensitivity microphone will allow the listener to hear sounds within the room and to have a speakerphone conversation with the person needing help.

F E A T U R E S

Sends a prerecorded emergency voice message (up to 20 seconds in length) three times to four different numbers. Allows for "listen in" and "2-Way" speakerphone communication mode.

No installation required! Just plug into any standard telephone jack, program the emergency telephone numbers to dial and record voice message in any language requesting help.

Activated by cordless pendant and wireless transmitters. Internal battery back-up ensures operation even when the power fails.

The ERU-900[™] automatically skips to the next number when a busy signal is detected or when telephone is not answered. The ERU-900[™] then keeps calling back until message is delivered or The ERU-900[™] is deactivated.

Emergency Caller Products



Emergency Caller Products (T) 800-227-2474 (F) 800-762-7613
www.emergencycaller.com sales@emergencycaller.com

U.S.A. and Foreign Patents Issued and Pending on Certain Products
Made in USA

Federal Communications Commission Radio and Television Interference Statement for A Class 'B' Device

This equipment generates and uses radio frequency energy and if not installed and used properly, that is, in strict accordance with the manufacturer's instructions, may cause interference to radio and television reception. It has been type tested and found to comply with the limits for a Class 'B' computing device in accordance with the specifications in Subpart B of FCC Rules and Regulations (as outlined in the Code of Federal Regulation, Title 47), which are designed to provide reasonable protection against such interference in a residential installation.

User Instructions:

If this equipment does cause interference to radio or television reception, which can be determined by turning the equipment off, then on, the user is encouraged to try to correct the interference by one or more of the following measures:

- Reorient or relocate radio or television.
- Increase the separation between the equipment and receiver.
- Connect the equipment into a different outlet so that the equipment and receiver are on different branch circuits.
- Consult the dealer or an experienced radio/TV technician for help.

Changes or modifications not expressly approved by United Security Products, Inc. could void the user's authority to operate the equipment.

NOTE: This equipment has been tested and found to comply with the limits for a Class B digital device, pursuant to Part 15 of the FCC Rules. These limits are designed to provide reasonable protection against harmful interference in a residential or commercial installation. This equipment generates, uses and can radiate radio frequency energy and, if not installed and used in accordance with instructions, may cause harmful interference to radio communications.

Important! Please Read This Page

Thank You for Purchasing *The ERU-900* from USP!

USP has made every effort to make *The ERU-900* the finest Personal Emergency Response System on the market today. However, for your safety please take the following precautions when using *The ERU-900*:

- The ERU-900 should be tested regularly to ensure proper delivery of your pre-recorded emergency message when activated by the Panic Button transmitter or the Auxiliary input. **This is your responsibility as the user of the product.**
- Certain structures within a household may block the transmitter signal. It is up to the user to test the transmitter within the area of use to determine if dead areas exist, and where they are located.
- Holding the transmitter next to your body or the ground while in use may decrease the range of the transmitter signal.
- Using *The ERU-900* does not guarantee that you will contact or receive help. *The ERU-900* is only an aid to assist you in calling for help.
- The transmitter should be tested frequently to protect against undetected interference or fault.
- For U.S. installations only: *The ERU-900* is required to comply with Part 15 of the FCC Rules and regulations. As such, it has limited transmitter power and therefore limited range.
- The dialer cannot respond to more than one transmitted signal at a time and may be blocked by radio signals that occur on or near their operating frequencies, regardless of code setting.
- Changes or modifications to the device may void FCC compliance.

The ERU-900... Gets Help Fast!

Congratulations!

Thank you for purchasing United Security Products, Inc.'s **ERU-900** - the "smartest", most comprehensive automatic ce/pager emergency dialer available. Representing an exciting new level of achievement, **The ERU-900** combines technologically advanced features, ease of programming and reliable operation in a compact, unobtrusive dialer. Installation and hookup are quick and easy. The unit is a stand-alone wireless device that simply connects to an inary telephone jack. The keypad cover glides on and off for added attractiveness and security.

How It Works:

ERU-900 features busy-line and no-answer detection to ensure prompt transmission of the prerecorded message to many as 4 standard telephones, cellular phones, voice and/or numeric pagers. Message to both local and long-distance calls can be transmitted. When activated, the dialer instantly begins calling the numbers in sequence, in an attempt to deliver the message or pager code. **The ERU-900** is extensively programmable, offering personalized customization to fulfill virtually any residence. Plain-English prompts walk the user through the process in a timely manner.

Programming options abound, allowing the user to:

Store up to 4 telephone/pager numbers.

Store an emergency message (maximum: 20 sec.).

Select Tone/Pulse dialing, Standard telephone line/PBX system and Momentary activation.

Special Features:

The dialer will "beep" every 30 seconds in the Program and Test mode. This is to warn the user that the dialer is not in the Operate or Off mode.

In the Test mode, when testing the input, the dialer will check to make sure that there is a dial tone. If no dial tone is detected, the dialer will not continue testing the input and will display:

NO DIAL TONE!

(Connect the dialer to the telephone line and re-test the input). **Note: Although the dialer checks for a dial tone it will not actually dial out.**

- The dialer will check to make sure that at least one telephone number and OGM or one pager number is programmed before allowing the dialer to be switched to the Operate mode. If programming is not complete, the dialer will display:

**PROGRAMMING IS
NOT COMPLETE!**

(After 2 seconds the dialer will automatically switch to the Programming mode).

Please Familiarize Yourself With These Instructions Before Installation/Operation. This guide describes how to program and operate the dialer. We strongly recommend that you read the entire manual before attempting to use the unit.

To enhance ease of programming and operation, this guide includes:

- A Programming Sample/Quick Setup review on page 20 with a corresponding Program Planner.
- A Blank Program Planner on page 21. One copy of this Planner should be kept in a safe place by the end user. The installer should also retain a separate copy.

Table of Contents

Section	Page number
Package contents.....	5
Care and Precautions.....	6
Panel Displays.....	7
Installation Hookup.....	8
The Panic Button Transmitter.....	9
The Panic Button Transmitter necklace.....	9
Programming The ERU-900.....	10
Overview.....	10
Programming Phone/Pager Numbers.....	11-12
Programming Auxiliary Information, OGM and Input.....	13-14
Testing Your System.....	15
Operating Your System and Additional Features.....	16
Programming Example and Sample Program Planner.....	17
Blank Program Planner.....	18
Weekly Test Log.....	19
Specifications and Dialer Accessories.....	20

The ERU-900, by United Security Products, is a compact Personal Emergency Response System. This full-featured unit provides fast, automatic emergency notification for single residents, latchkey children, elderly people, illness sufferers and others who desire the reassurance of 24-hour peace of mind. Combined with the cordless Panic Button Transmitter, the ERU-900 will call for help even if you are unable to reach the telephone yourself!

EASY

- Fast plug-in installation
- Programs in minutes
- Activates by pressing the Auxiliary input or remotely with the cordless Panic Button Transmitter

VERSATILE

- Communicates with up to 4 telephones, cellular phones and/or pager destinations
- Can quickly change the 20-second personalized message and your programmed numbers

SECURE

- Provides automatic, emergency communication 24 hours a day
- Incorporates busy-line and no-answer detection, and will redial until the message is delivered
- Operates on 9v. battery for momentary power losses. Range of transmitter will be reduced considerably.

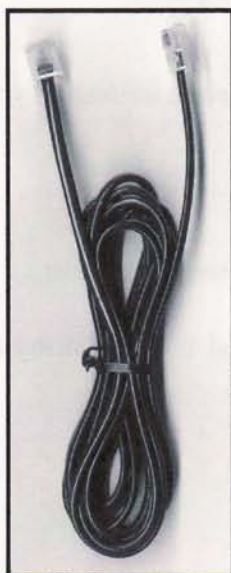
Important: Save These Instructions

Packaging Contents

As you unpack your **ERU-900**, check to make sure you have the following items:

1. **ERU-900** Main unit
2. Long telephone line cord
3. Panic Button Cordless Transmitter
4. 14V AC/DC adaptor, with 3.5mm plug
5. Panic Button Transmitter Necklace(Not Shown)
5. Instruction Manual

①



②

③



④



⑥

Care and Precautions

WARNING: DO NOT EXPOSE UNIT TO RAIN OR MOISTURE. DO NOT OPEN HOUSING.

LOCATION

Place the dialer on a flat level surface or mount the unit on the wall, away from extreme cold or heat, direct sunlight, excessive humidity and away from equipment that generate strong magnetic fields. Avoid placing near large metal objects and areas that produce smoke, dust and mechanical vibrations.

CARE

Clean the housing with a soft cloth lightly moistened with water or mild detergent solution. Never use solvents such as alcohol or thinner. Do not allow liquids to spill into the unit.

PANIC BUTTON TRANSMITTER BATTERIES

The 3-Volt Lithium battery (Sanyo CR2450, Renata CR2450N or equivalent) are pre-installed with your Panic Button Transmitter. Under normal use transmitter batteries should last 12-18 months. The transmitter battery is always supervised and the dialer will emit beeps if the voltage drops to indicate replacement. Transmitter batteries should be replaced at least once a year. After replacing the battery press either the internal or the external reset button to re-initialize the transmitter and restore programming.

OPTIONAL BACKUP

To ensure continuous operation during power outages, hookup to a 12VDC backup battery pack is recommended. (PP-1) Available from United Security Products.

CAUTION

Do not use the dialer if a gas leak is suspected or during lightning.

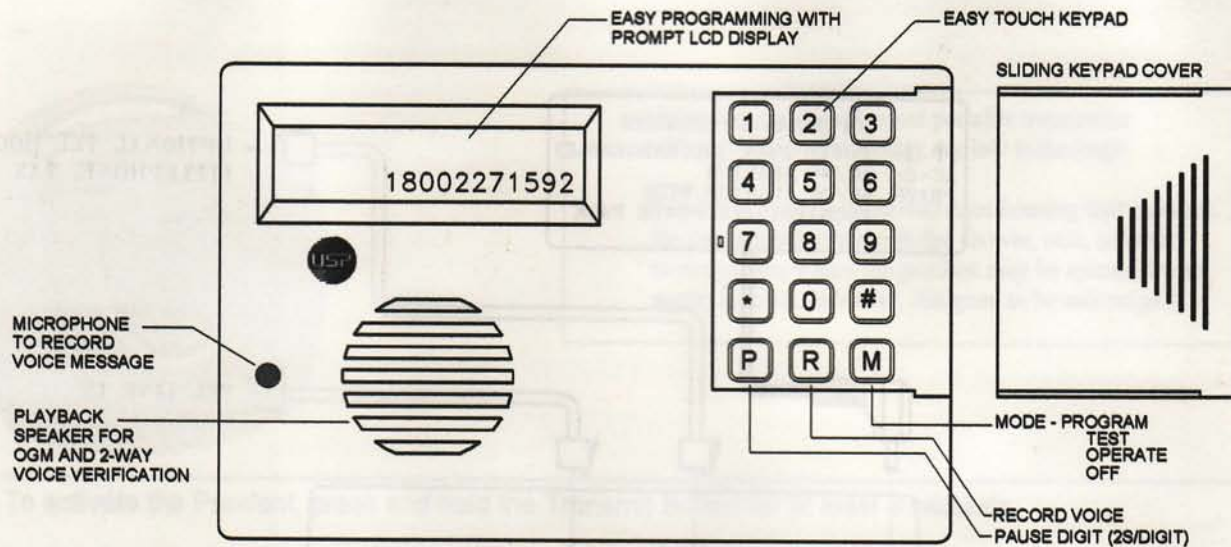
PROBLEMS

If liquid or a foreign object penetrates the unit, disconnect it immediately and contact your installer or other qualified technician.

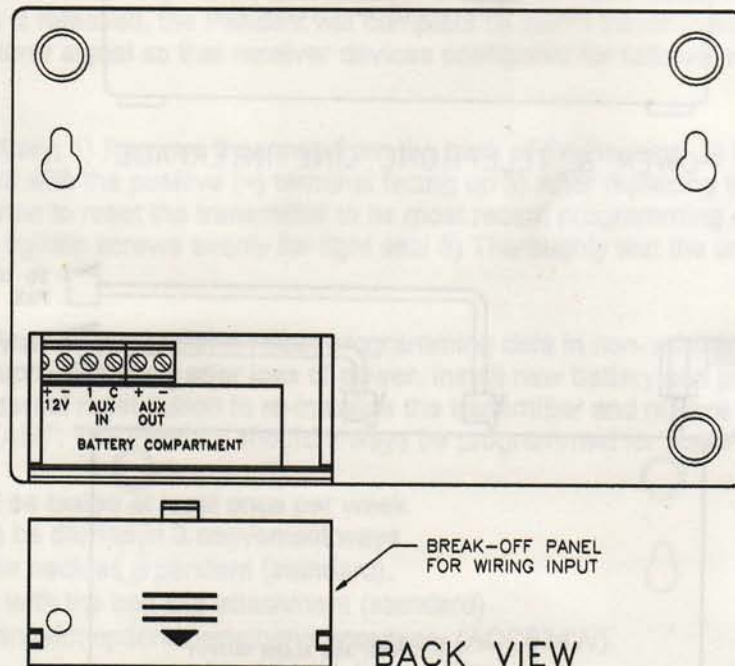
Before calling USP, please make sure...

- You have read this manual and understand how to operate the dialer.
- Your phone line is working.
- You check out the entire system, including external hookup wiring and sensors attached.

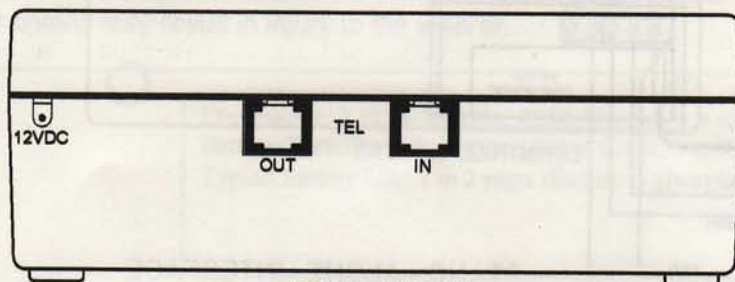
Panel Display



FRONT VIEW

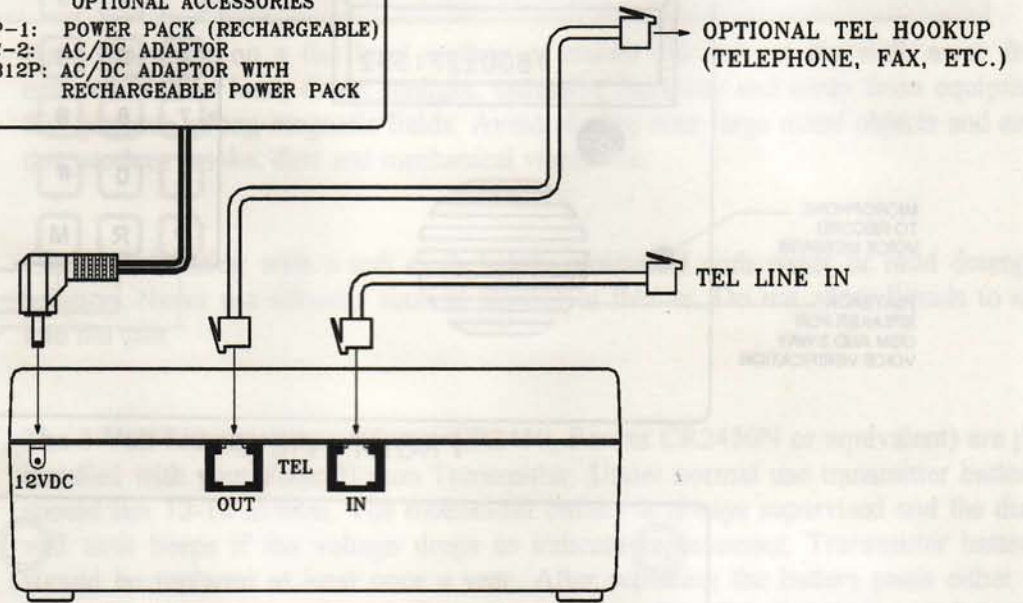


BACK VIEW

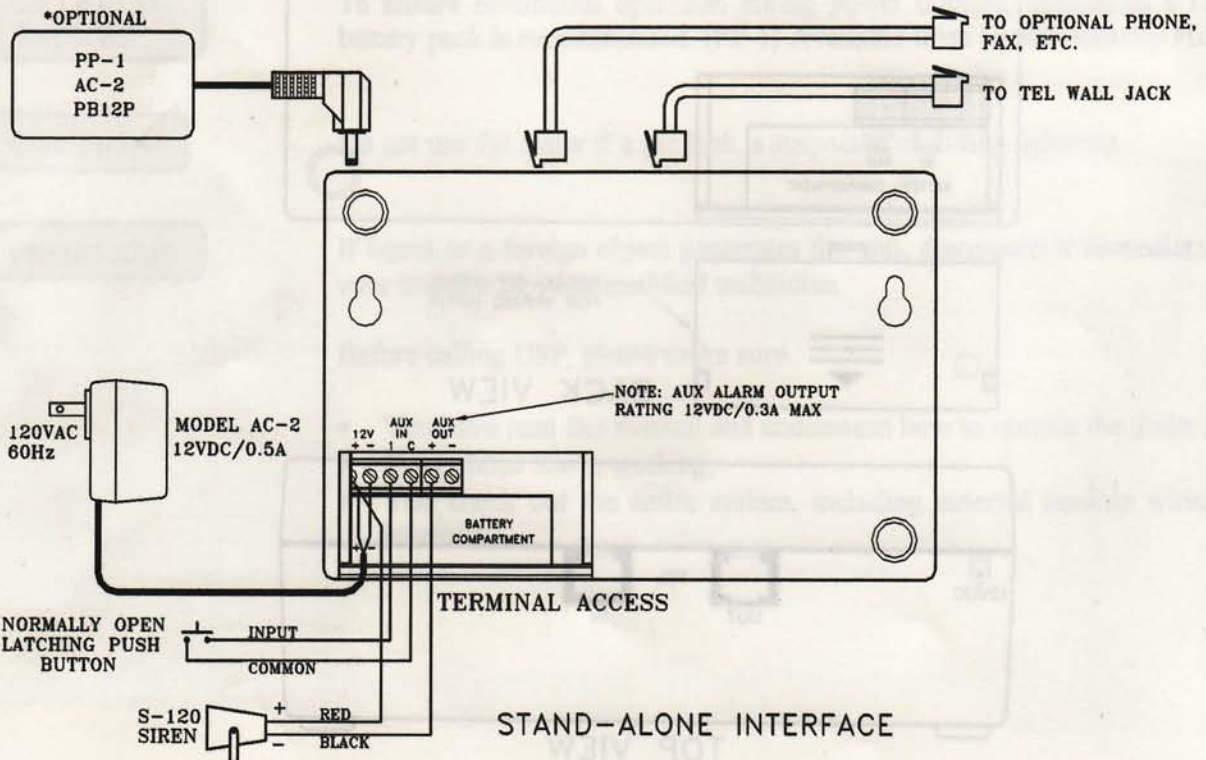


TOP VIEW

OPTIONAL ACCESSORIES
 PP-1: POWER PACK (RECHARGEABLE)
 AC-2: AC/DC ADAPTOR
 PB12P: AC/DC ADAPTOR WITH
 RECHARGEABLE POWER PACK



POWER & TELEPHONE LINE INTERFACE



STAND-ALONE INTERFACE

Installation Instructions

PENDANT



Intended use: The Pendant portable transmitter utilizes 900MHz Frequency Agile® technology.

The Pendant has a water-resistant housing that protects the pendant when worn in the shower, rain, or other environments where the pendant may be splashed with water. It is not, however, designed to be submerged.

To activate the Pendant, press and hold the Transmit Button for at least 3 seconds.

Alarm signals are transmitted multiple times, and are indicated by the blinking transmit LED. Holding the button results in continuous transmission. When the button is released, the Pendant will complete its alarm transmission, then will send an alarm signal restorer signal so that receiver devices configured for follower mode will return to their normal state.

Changing the battery; 1) Remove 3 screws from the back of the housing. 2) Make sure that the battery is inserted with the positive (+) terminal facing up 3) After replacing the battery, press the internal reset button to reset the transmitter to its most recent programming 4) Replace back cover and care-fully re tighten screws evenly for tight seal 5) Thoroughly test the unit before returning to service.

- I. NOTE: Pendant transmitters retain programming data in non-volatile memory. They do not require reprogramming after loss of power. Install new battery and press either the internal or the external reset button to re-initialize the transmitter and restore programming. IMPORTANT: The Pendant should always be programmed for supervision

Pendants should be tested at least once per week.

The Pendant can be carried in 3 convenient ways

- Around the neck as a pendant (standard).
- On a belt with the belt clip attachment (standard).
- On the arm with optional wristband accessory (ACC634W).

WARNING: The neck cord provided with the Pendant is designed for user safety. Substitution of stronger cords or chains may result in injury to the wearer.

Dimensions: 2.22" x 1.925" x .725" Weight: 1.4 oz.
Battery (Bat609): 3.0v Lithium Sanyo CR2450 or Renata CR2450N
Typical Battery Life: 1 to 2 years (Battery is always supervised.

Programming The ERU-900

Overview

Please study this section thoroughly before beginning to program the dialer, referring to the Sample Program Planner on page 20. Then, select from among the options for each feature, listing each choice in pencil on the blank Program Planner on page 21. Once the dialer is correctly programmed, list each choice in ink. One copy of the Planner should be kept by the installer; one copy should remain with the end user.

A look At The Keypad

1 2 3

- **CALLOUT FOR NUMERALS:**

Press these keys to enter telephone numbers and other programming information as specified in this manual. A maximum of 28 digits can be input in each phone/pager location.

4 5 6

- **CALLOUT FOR P:**

Press this key to program in a pause. Each "P" provides a 2-second pause.

7 8 9

- **CALLOUT FOR R:**

Press this key to record the directional outgoing messages (OGMs). The total elapsed OGM time cannot exceed 20 seconds.

* 0 #

- **CALLOUT FOR M:**

Press this key to change the Mode of the dialer, in sequence:
PROGRAM TEST OPERATE OFF.

P R M

Once the unit has been programmed, removing power or placing the dialer in the OFF mode will not affect the programming.



First Time Installation to Initialize Dialer Follow Steps 1 & 2.

STEP 1 Apply power to the unit. The LCD will read: NOT PROGRAMMED
PRESS KEYPAD #1

STEP 2 Press 1. The LCD will change to read: Emergency Caller
USP (REVISION)
then: PROGRAM: NUMBERS
then: SELECT: 1-4
0(DONE)

Programming Telephone And/Or Pager Numbers

You are now ready to begin programming the dialer. All programming can be input before connecting the dialer to a telephone line. Check the unit's LCD as you program numbers in the dialer to ensure accuracy. Please complete all programming instructions before attempting to operate the unit.

Before programming your dialer to call the police, fire department or 9-1-1 directly, you must check with these agencies for their approval.

A maximum of 28 digits (including pauses) can be programmed in at each location.

***PROGRAM: NUMBERS** **SELECT: 1-4**
1(YES) 2(NO) **0(DONE)**

*This prompt will appear after a number has been programmed and this section has been exited.

STEP 1 Press location number 1-4 to program the first number. This can be any location 1-4. You do not have to program locations in sequence. For example, you can program numbers in locations 2 and 4. **When you are done programming all the desired telephone and/or pager numbers, press "O" to exit this section.**

The LCD will read: **PAGER**
1(YES) 2(NO)

STEP 2 Press "1" if you wish to program in a numeric pager number (step 3A).
Press "2" if you wish to program in a telephone number (step 3B), cellular phone number (step 3B), or a voice pager (step 3C).

STEP 3A- NUMERIC PAGERS

NOTE: WHEN PROGRAMMING NUMERIC PAGERS, YOU MUST PROGRAM IN ONE OR MORE PAUSES. EACH "P" PROVIDES A 2-SECOND PAUSE. BEFORE PROGRAMMING IN A PAGER, CALL THE NUMBER TO DETERMINE THE NUMBER OF 2-SECOND PAUSES TO BE PROGRAMMED IN.

If you pressed "1" to program in a numeric pager...

Press the digits of the pager to be called. The numbers will appear on the LCD, as will the following key designations.

Press "P" one or more times in accordance with the number of seconds needed to accommodate the pager. **(Remember, each "P" provides a 2-second pause).**

Press the digits of the numeric pager code.

Press "*" to store the sequence.

Example: To store numeric pager number 555-1212, a 4-second Pause and code 3456:

Press:

5 5 5 1 2 1 2 P P 3 4 5 6 *

NOTE: SOME PAGER SERVICES REQUIRE A “#” SIGN FOR SEPARATION OF THE NUMERIC CODE OR AT THE END OF THE NUMERIC CODE FOR PROPER TRANSMISSION.

STEP 3B – TELEPHONE NUMBERS

If you pressed “2” and wish to program in a telephone number...

Press the digits of the number to be dialed. For long-distance numbers, first press “1” followed by the area code and then the number. The number will appear on the LCD.

Press “*” to store the sequence.

Example: Store telephone number 1-800-555-1212:

Press:

1 8 0 0 5 5 5 1 2 1 2 *

REMEMBER/NOTE: Before programming your dialer to call the police, fire department Or 9-1-1 directly, you must check with these agencies for their approval.

STEP 3C – VOICE PAGERS

If you pressed “2” and wish to program in a voice pager...

Press the digits of the pager to be called.

Press “P” one or more times in accordance with the number of seconds needed to accommodate the pager. (Remember each “P” provides a 2-second pause).

Press “*” to store the sequence. The number will appear on the LCD.

Example: To store voice pager 555-1212 and a 4-second pause:

Press:

5 5 5 1 2 1 2 P P *

STEP 4 Repeat steps 1-3 for each number to be programmed in each location. Select any of 4 location numbers in Step 1 (SELECT: 1-4) for each number to be programmed.

STEP 5 When you are done programming all desired telephone and/or pager numbers, press “0” to exit this section.

NOTE: IF YOU ENTER THE WRONG CHOICE, PRESS “M” KEY REPEATEDLY AND RETURN TO THE “PROGRAM MODE”, THEN SELECT THE SECTION TO CHANGE (“1” ACCEPT SECTION, “2” FOR NEXT SECTION), THEN ENTER CORRECT INFORMATION.

Programming Auxiliary Information

The dialer is preset at the factory to typical telephone line (T-LINE), Tone/Pulse and PBX options. If you choose to accept the following default prompts, simply press "2" to scroll to the next section. **If your phone system requires dialing a digit to get an outside line or dial tone, similar to PBX, then turn PBX on and enter digit to program.**

PRESETS

T-LINE.....TONE
PBX.....OFF

To change the presets, follow these steps.

T-LINE

The LCD will display: **PROGRAM: T-LINE**
1(YES) 2(NO)

Press "1" to program T-LINE.

Press "2" to scroll to the next section.

The LCD will display: **PROGRAM: T-LINE**
1(TONE) 2(PULSE)

Press "1" for TONE. Press "2" for PULSE.

PBX

The LCD will display: **PROGRAM: PBX**
1(ON) 2(OFF)

Step 1: Press "1" for ON. Press "2" for OFF.

Step 2: If "1" is entered, the LCD will display:

PROGRAM: PBX
ENTER PBX NUMBER

Enter PBX number (1 digit).

Programming And Recording Your Outgoing Message

Follow these steps to program and record your outgoing message. Skip this portion if you have programmed in only numeric pagers, which rely on coded DTMF messages. As with all **ERU-900** programming, the unit need not be connected to a phone line when information is programmed in. Remember that "OGM" stands for outgoing message.

Total OGM time is 20 seconds.

Typically the dialer is programmed to notify family, friends or another responsible party. Before programming your dialer to call the police, fire department or 9-1-1 directly, you must check with these agencies for their approval.

NOTE: IF YOU ENTER THE WRONG CHOICE, PRESS "M" KEY REPEATEDLY AND RETURN TO THE "PROGRAM MODE", THEN SELECT THE SECTION TO CHANGE ("1" ACCEPT SECTION, "2" FOR NEXT SECTION), THEN ENTER CORRECT INFORMATION.

STEP 1 Before programming, write down all your message. Time the message carefully to fit in the allotted time frame. Practice saying the message, clearly enunciating the message for maximum clarity in case of an emergency. Keep a final recording script.

STEP 2 Program your OGM.

A) The LCD will read: **PROGRAM: OGM**
1(YES) 2(NO)

B) Press "1" to program your OGM. Press "2" to scroll to the next section.

STEP 3 After selecting your option as explained above, record your message.

A) The LCD will read: **PRESS R**

B) Speak 6-12 inches away from the microphone. Referring to your script and speaking in a normal voice, press and hold R (the word **RECORDING** will be displayed), releasing the key after you have completed enunciating your messages. The word **DONE** will appear on the LCD when the maximum allotted time has been reached.

C) The LCD will read: **PLAY OGM**
1(YES) 2(NO)

Press "1" to play back your recording

D) The LCD will read: **ACCEPT**
1(YES) 2(NO)

Press "1" to accept the recorded OGM.

Press "2" if you wish to re-record the message, beginning with Step 3.

Changing The OGM

After your system is up and operating, you may change the recorded OGM. To do so, simply scroll to the programming section on your display: **PROGRAM: OGM**

1(YES) 2(NO)

Select the option, then begin again from Step 3 above to record your new message.

Programming The Input

The *ERU-900* is designed to be receptive to emergency activation. This means that when the pendant is pressed for a very short period (approx. 3 seconds) and released the signal will be received and the programmed message will be delivered.

STEP 1 The LCD will read: **PROGRAM: INPUT**
1(YES) 2(NO)

Press "2" to maintain factory preset settings. Unit should always be set for momentary activation.

NOTE: IF YOU ENTER THE WRONG CHOICE, PRESS "M" KEY REPEATEDLY AND RETURN TO THE "PROGRAM MODE", THEN SELECT THE SECTION TO CHANGE ("1" ACCEPT SECTION, "2" FOR NEXT SECTION), THEN ENTER CORRECT INFORMATION.

PRESS "M" TO EXIT PROGRAMMING MODE.

In the Program mode, a beep will be heard every 30 seconds. This is to indicate that the dialer is not in the Off or Operate mode.

Testing The ERU-900

Test your system before an emergency occurs.

Do not neglect to review programmed information and verify all elements of your system thoroughly before relying on the dialer to deliver the necessary information to the desired parties accurately and completely.

The test mode tests the stored information, not the full functionality of the dialer. To test the full functionality of the dialer, the unit must be tested in the operate mode. In the test mode, the dialer will not make more than one attempt per number dialed or play the OGM more than once.

NOTE: IF YOU ENTER THE WRONG CHOICE, PRESS "M" KEY REPEATEDLY AND RETURN TO THE "PROGRAM MODE", THEN SELECT THE SECTION TO CHANGE ("1" ACCEPT SECTION, "2" FOR NEXT SECTION), THEN ENTER CORRECT INFORMATION.

STEP 1 Press the "M" Mode key until the LCD reads: **TEST: T-LINE**

1(YES) 2(NO)

STEP 2 Press "1" to display the T-Line configuration. The data will scroll through all selections.

Press "2" to scroll to the next section.

Note: To fully test the input, the dialer must be connected to a telephone line. If the dialer does not detect a dial tone, it will not continue testing the programmed numbers and will display: NO DIAL TONE!

Connect the dialer to a telephone line and press the "M" key until the TEST: T-LINE prompt appears. Continue testing the input by selecting "2" in Step 1 and skip to Step 3.

STEP 3 The LCD will read: **TEST: INPUT**

1(YES) 2(NO)

STEP 4 Press "1" to test input. Verify data accuracy as the LCD scrolls through by comparing the information displayed with that specified on your Program Planner. Listen to your recorded message to ensure that the correct OGM (if programmed) is delivered.

Press "2" to scroll to the next section.

STEP 5 To test the operation of your entire system, set Mode to OPERATE and proceed as explained in the next section: Operating Your System.

NOTE: IN ORDER TO TEST IN THE OPERATE MODE, AT LEAST, 1 PHONE NUMBER AND OGM OR 1 PAGER NUMBER MUST BE PROGRAMMED. IF PROGRAMMING IS NOT COMPLETE, THE DIALER WILL DISPLAY: PROGRAMMING IS NOT COMPLETE!

This message will be displayed for 2 seconds then the dialer will switch to the Program mode.

Make sure you notify the receiving party of your intent to call them, and tell them it is just a test.

Test your system on a regular basis, at least once a week.

In the Test mode, a beep will be heard every 30 seconds. This is to indicate that the dialer is not in the Off or Operate mode.

You are now ready to begin operating your system, relying on *The ERU-900* to provide 24-hour security reassurance and peace of mind.

When in the operating mode, the system will monitor the wireless pendant and the Aux. input, initiating dialing when a valid alarm condition occurs. Upon activation the dialer will begin calling each phone/pager number selected, in sequence. During each successful attempt, the voice message will be delivered 3 times (**numeric messages will only be delivered one time**). In unsuccessful attempts, the dialer will move on to the next phone/pager number after receiving 8 busy or 8 rings without an answer. Once an attempt is successful in delivering the OGM, it will not dial that number again (Numbers stored as pager numbers will be dialed twice). The dialer will not allow voice messages to be delivered to programmed numeric pager locations.

If you send a message to a phone attached to an answering machine, it will consider this a successful attempt. Make sure you designate the maximum number of message repeats to be sure that a complete message will be left on the answering machine, because part or all of your emergency message may be "lost" while the answering machine delivers its greeting message.

Placing your system in OPERATE can also be used as a final test of the full functionality of *The ERU-900's*, momentary/continuous trigger, phone/pager numbers and OGM. Although serving as a test, this mode reflects actual operation; therefore the OGM will not be heard through your dialer's speaker but only by each party called.

To begin operating your system, simply press the "M" Mode key until the word OPERATE appears on the LCD. To disarm the dialer, switch the mode to OFF by pressing the same key. All programming information will be retained.

Input Activation

The input is activated by the pendant or the Aux. input terminals in the battery compartment. Press and hold the transmitter button on the pendant for at least 3 seconds. Once the pendant is activated, the *ERU-900* will be alarmed and begin the dialing sequence.

Aux. Activation can be activated by a normally open latching push button or a normally open dry contact connected to the to the Aux. input terminals. Under a momentary activation, a single violation of the input (either from the wireless pendant or the Aux. input) will cause the dialer to initiate delivering the OGM to all programmed numbers.

Additional Features

The dialer offers innovative features that enhance the utility of the entire system.

Listen-In

While receiving an OGM on a touch-tone phone, the called party can press "1" to listen in to the activity at the other end of the line for one minute. Pressing "1" again restarts the minute increment period and can be repeated indefinitely. When "1" is pressed the OGM will stop playing and the listen in period will start.

Two-Way

After the called party is listening-in, that party can press "2" to begin a two-way conversation lasting for one minute. This procedure also can be repeated indefinitely by pressing "2" again to restart the minute. Once you are in two-way mode you cannot go back to Listen-In.

Remote Turn-Off

The called party can remotely terminate the activated channel any time during the OGM by pressing "1" then "#" twice within one second. The dialer will continue to monitor the remaining channel. Once the terminated channel is restored to a non-alarm state, it will re-arm. If in listen-in or two-way, simply press "#" twice in one second, for remote turn-off.

Date: 7/19/99

PROGRAM: NUMBERS

EMERGENCY CALLER PROGRAM PLANNER

NUMBER	PAGER		TELEPHONE NUMBER (exclude PBX digit, include numeric pager code)	NAME OF PARTY TO BE REACHED
	YES	NO		
1		✓	2345678	John Johnson's house
2				
3	✓		3456789PP4455#	John Johnson's pager - emergency code
4				

PROGRAM: T-LINE

TONE	PULSE	PBX	
		ON	OFF
✓		NUMBER	✓

PROGRAM: OGM

BRIEFLY DESCRIBE THE VOICE MESSAGE
My name is Mary Smith and I need help. Please call the police department.

PROGRAM: INPUT

MOMENTARY	CONTINUOUS
	✓

Programming Example for Quick Setup

Before programming the dialer, study the example shown on this page. This "quick setup" example programs in one telephone number, one numeric pager number, tone dialing, brief emergency message and continuous activation. Once you understand the setup, use the blank Program Planner on page 21 to begin programming your dialer. We recommend making several blank copies of the Planner before beginning the process. It also is advisable to fill in the Planner in pencil initially.

STEP 1 Press "1". When the LCD reads SELECT 1-4, press "1" to install the first phone number in location 1; press "2" to indicate no pager; then press, in sequence, (fictitious) phone number "2345678" followed by the "*" sign to store the programming process for that number.

STEP 3 Press "3" to install the second phone number in location 3; press "1" to indicate numeric pager; then press, in sequence, "3456789PP4455#" followed by the "*" sign. The first seven digits represent the pager number dialed; each P stands for a 2-second pause; the next four digits followed by the # sign represent the pager code and the * stores the programming process for that number.

STEP 4 Press "0" to exit PROGRAM NUMBERS.

STEP 5 Press "1" at the PROGRAM: T-LINE prompt.

STEP 6 Press "1" for TONE dialing; then press "2" to indicate no PBX.

STEP 7 Press "1" at the PROGRAM: OGM prompt.

STEP 8 Using a prepared script and speaking six-to-eight inches from the dialer's microphone on the front of the unit, press "R" when you are ready to enunciate your emergency message.

STEP 9 Press "1" to play back the recorded message. Press "1" again to accept.

STEP 10 Press "1" at the PROGRAM: INPUT prompt.

STEP 11 Press "1" to program input for MOMENTARY activation; press "2" to program input for CONTINUOUS activation.

STEP 12 Once a selection is entered for the activation of the input, the dialer will return to the PROGRAM: NUMBERS prompt.

PRESS "M" TO EXIT PROGRAMMING MODE.

Program Planner

PROGRAM: NUMBERS

EMERGENCY CALLER PROGRAM PLANNER

Date: _____

NUMBER	PAGER		TELEPHONE NUMBER (exclude PBX digit, include numeric pager code)	NAME OF PARTY TO BE REACHED
	YES	NO		
1				
2				
3				
4				

PROGRAM: T-LINE

TONE	PULSE	PBX	
		ON	OFF
		NUMBER _____	

PROGRAM: OGM

BRIEFLY DESCRIBE THE VOICE MESSAGE

PROGRAM: INPUT

MOMENTARY	CONTINUOUS

PROGRAM: NUMBERS

EMERGENCY CALLER PROGRAM PLANNER

Date: _____

NUMBER	PAGER		TELEPHONE NUMBER (exclude PBX digit, include numeric pager code)	NAME OF PARTY TO BE REACHED
	YES	NO		
1				
2				
3				
4				

PROGRAM: T-LINE

TONE	PULSE	PBX	
		ON	OFF
		NUMBER _____	

PROGRAM: OGM

BRIEFLY DESCRIBE THE VOICE MESSAGE

PROGRAM: INPUT

MOMENTARY	CONTINUOUS

After thoroughly testing your system, redo your Program Planner in ink.
One copy should be kept in a safe place by the end user; one copy should be retained by the installer.

Weekly Test Log

To ensure proper operation of *The ERU-900* you **must** test your unit on a weekly basis. This is to ensure that the Panic Button Transmitter and main unit are operating properly in case of an emergency. The following log is provided for you to keep an accurate record of your tests. This log covers the first year. For additional years please make copies of this page or create you own log.

Date Tested		Date Tested	
Week 1	_____	Week 28	_____
Week 2	_____	Week 29	_____
Week 3	_____	Week 30	_____
Week 4	_____	Week 31	_____
Week 5	_____	Week 32	_____
Week 6	_____	Week 33	_____
Week 7	_____	Week 34	_____
Week 8	_____	Week 35	_____
Week 9	_____	Week 36	_____
Week 10	_____	Week 37	_____
Week 11	_____	Week 38	_____
Week 12	_____	Week 39	_____
Week 13	_____	Week 40	_____
Week 14	_____	Week 41	_____
Week 15	_____	Week 42	_____
Week 16	_____	Week 43	_____
Week 17	_____	Week 44	_____
Week 18	_____	Week 45	_____
Week 19	_____	Week 46	_____
Week 20	_____	Week 47	_____
Week 21	_____	Week 48	_____
Week 22	_____	Week 49	_____
Week 23	_____	Week 50	_____
Week 24	_____	Week 51	_____
Week 25	_____	Week 52	_____
Week 26	_____		
Week 27	_____		

One Year
Replace Transmitter Batteries

The ERU-900 Personal Emergency Response System

Power source:	14 VDC
Current (OPERATE mode – standby):	80 mA typical.
Current (OPERATE mode – dialing):	100mA max.
Activation: Wireless:	1) Activation of the pendant will activate the dialer 2) Aux. Input: Dialer activates when a “close” is detected (Within the typical home environment)
Max. digits for outgoing numbers:	28
Operating temperature range:	-18 to 55 C (0 to 130 F)
Dimensions (inches):	6 x 4 x 2 1/8 in
Weight (ounces):	10 oz
Mounting:	Wall or Flat Surface
Case Material:	ABS
Color:	Off White
Warranty:	1 Year

Note: Design and specifications subject to change without notice.

Dialer Accessories

Power Source

PB12P: AC/DC Adaptor With Power Pack (Rechargeable)

Plugs into regular 110VAC outlet. to provide primary and backup power.

AC-2: AC/DC Adaptor

12VDC/0.5A for stand alone with siren use.

PP-1: Power (Rechargeable)

Provides 24 (est.) hours of backup standby power.

IR-1: Isolation Relay

Converts alarm output voltage to N.C. to provide clean input trigger to dialer.

Siren

S-120: 2” Mini Siren, 12VDC @ 120 mA typical

Sensors

Magnetic Contacts – Door and Window Glass Break Detectors

Hold Up Buttons/Emergency Switches

Pressure Mats – Sealed and Under Carpet Motion Detectors

Industrial/Residential Sensors

F20: Temperature Supervisory Switch <40 F

HTS: High Temperature Switch

LTS: Low Temperature Switch

CSS: Cold Storage Switch

PLS: Power Loss Sensor (110VAC)

NOTE: CALL UNITED SECURITY PRODUCTS FOR ADDITIONAL INFORMATION AND DEVICES NOT LISTED HERE.

Automatic Man Down Transmitters

**NO
MONITORING
FEES!**

*Compact Size!
Our Man Down
Transmitter
comes in
2 models.
The AT-900
with a 1,000
foot range and
our economy
model, the
AT-300 with a
100 foot range.*



**AUTOMATICALLY
activates response
unit when resident
or patient falls!**

No buttons to press or cords to pull.

Detects Fall and Automatically sends signal.

Built in fall detectors AUTOMATICALLY send "Call for Help" signal whenever resident or patient has fallen down. Worn on necklace, belt-clip, attached to or carried inside clothing above the waist. On-Off switch. AT-900 up to 1,000 ft. range for 900MHz products. AT-300 up to 100 ft. range for extended range products.

*Ready to operate
with any of these
Emergency Caller
Products.*



*ERU-900 or
EC-1 will
autodial up to 4
numbers that
YOU program,
leave YOUR
recorded
message and
Get Help FAST!*

*Enunciator
will sound
alarm for
up to 10
Residents*

World's Most Advanced Fall Detection

- Automatically detects Falls and sends wireless signal to monitor station and enunciator horn strobe and emergency response products
- Small, Compact Size - Batteries Included
- Detects resident fall at any angle - No False Alarms from bending over, swinging necklace, etc.
- Water resistant for shower, bath, rain, etc.

* Complete with accessories.



*The EM-900
Monitor
Station is
portable and
can monitor
40+ residents
at any
healthcare
facility.*

Emergency Caller Products

**United
Security
Products, Inc.**

Emergency Caller Products (T) 800-227-2474 (F) 800-762-7613
www.emergencycaller.com sales@emergencycaller.com

U.S.A. and Foreign Patents Issued and Pending on Certain Products
Made in USA

Emergency Caller

United Security Products, Inc., 2001

United Security Products, Inc. 1999

09-13-01 Rev. A