

# USB51A

iProx RFID USB Time Clock - store 50,000 Records  
Dimensions: 101mm x 71mm x 32mm

# USB02B

duoFace RFID USB Time Clock (PC Based)  
Dimensions: 97mm x 57mm x 23.5mm



## Standalone Time Clock

- LCD display
- Real time clock
- Store 50,000 log records
- Time Attendance reports
- Total Hours Report
- Late, Early Leave and Overtime Attendance Report
- Export the clock in / clock out time to Excel
- Export to text file format

## USB51A iProx

### With PC on & PC camera

- Real time system
- Capture & Display Employee's photo while clocking
- Email clock IN / OUT data immediately
- Unlimited number of employees and records

connect directly to USB port

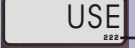
## USB02B duoFace

### PC Based Time Clock (must be used with PC and Time Clock)

- Real time system
- Capture & Display card holder's photo while clocking
- Email clock IN / OUT data immediately
- Unlimited number of employees and records
- Time Attendance reports
- Total Hours Report
- Late, Early Leave and Overtime Attendance Report
- Export the clock in / clock out time to Excel
- Export to text file format



## KEYPAD FUNCTIONS

- \* - Check MEMORY USAGE  Number of records stored in reader
- # - Use in CLOCK mode with Auto IN/OUT Timetable in use  
Press "#" to override from IN to OUT or vice versa for clocking

(for USB51A only)

## MODE OF OPERATION

There are **three modes of operation**:

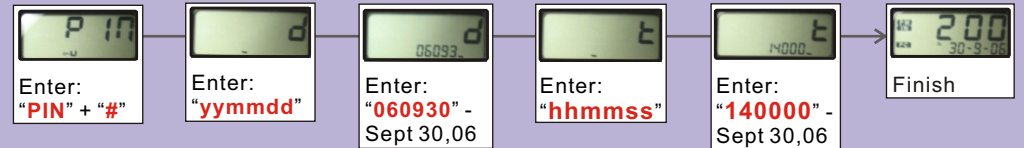
- CLOCK Mode** - use one reader for clocking IN and OUT. See Time Clock manual section 3.6 & 3.8.1 to set up the reader in this mode.
- IN Mode or OUT Mode** - two readers will be used in this mode. One for clocking IN and the other for clocking OUT. See Time Clock manual section 3.6 & 3.8.2 to set up the reader in IN mode. And see Time Clock manual section 3.6 & 3.8.3 to set up the reader in OUT mode.

## SET CLOCK - from the keypad of USB51A

(for USB51A only)

Use PIN to setup the clock:

- Enter the "PIN" number (see Time Clock manual sec 3.8) + "#"
- Enter the DATE - "yymmdd", then the TIME - "hhmmss" (e.g. September 30, 2006 2:00PM), please enter "060930" then "140000".



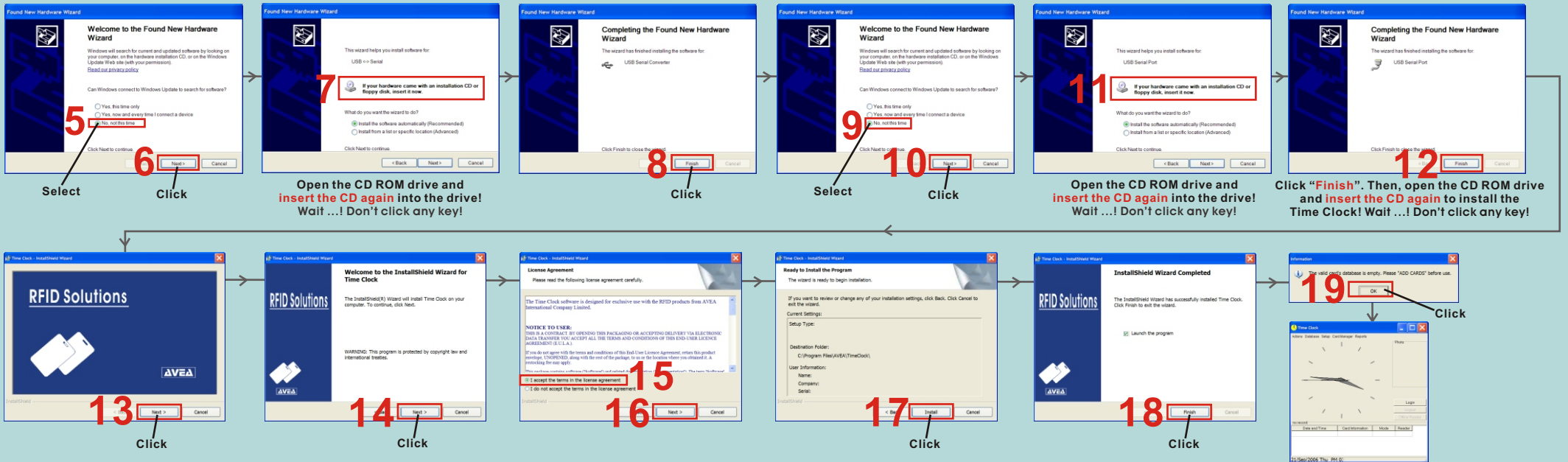
## QUICK START

**1** Turn on the computer

**2** Connect the reader's USB cable to the computer's USB port

**3** Insert the TIME CLOCK CD into your computer's CD-ROM drive

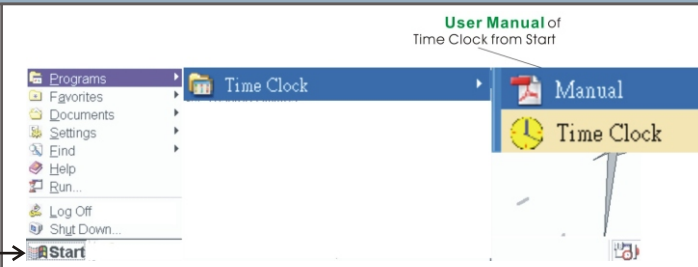
**4** wait ...



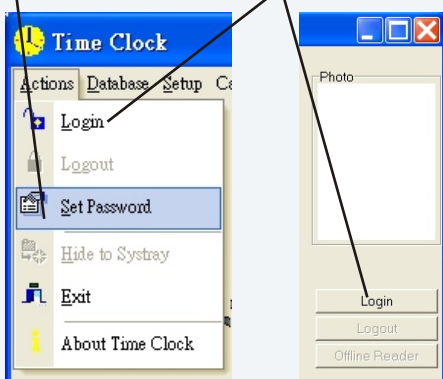
# TIME CLOCK USER MANUAL

The user manual will be automatically installed into your computer after Time Clock installation. If the Installer doesn't start automatically, you can run the setup.exe program to install the Time Clock software. Installer of Time Clock will start by itself automatically.

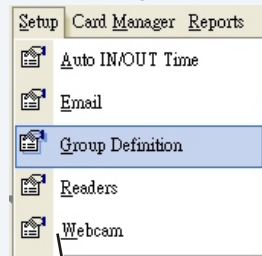
Print and follow the **User Manual** of Time Clock from Start for details of Time Clock Setup.



**1** Setup the password **2** Login the Time Clock to start

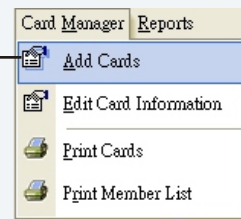


**3** Define the workgroups with different working hours for reports

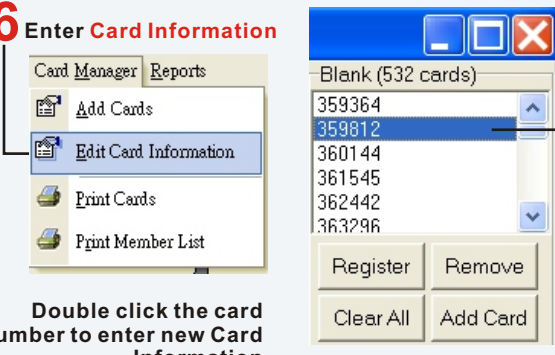


**4** Install the PC camera and setup the Webcam in Time Clock for photo capture when PC on

**5** ADD CARDS select the serial number printed on the packing of the ID card CD ROM to add cards

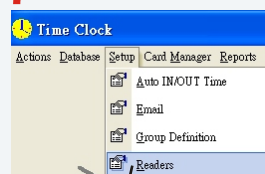


**6** Enter Card Information

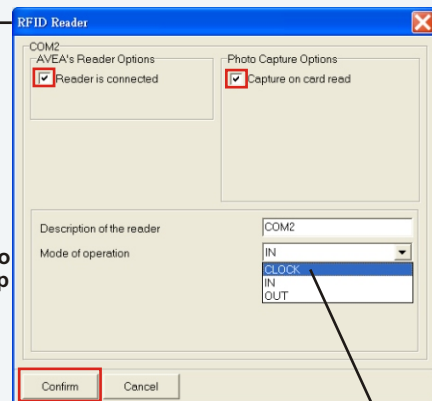
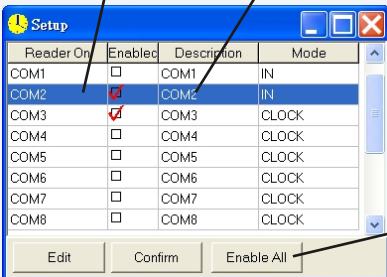


Double click the card number to enter new Card Information

**7** Setup the RFID reader



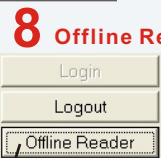
Double click the correct com port to enter reader setup



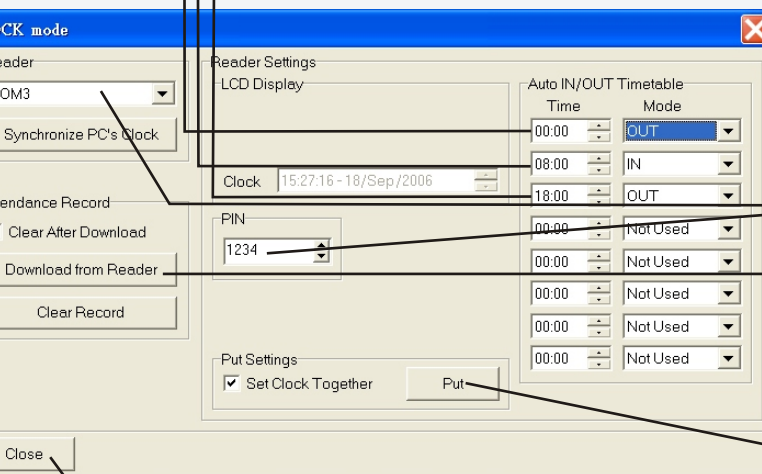
For single reader, select "CLOCK"  
For IN and OUT reader, select "IN" for IN reader, select "OUT" for OUT reader

"Enable All" if you do not know which com port is correct. The Time Clock will enable it if it is exist.

(for USB51A only)



**8.1** Click short cut button to go to offline reader setup



**8.4** Setup the Auto IN/OUT Timetable for single reader in CLOCK mode (Not applicable for IN or OUT mode)  
Allow the CLOCK reader to clock IN and clock OUT at the specific time intervals. (Setup will end at 23:59pm, remember to start the setup from 00:00)

For example:  
Office hour is 9:00am to 6:00pm and employee will start to arrive from 8:00am  
Reader will start for clocking OUT from 00:00  
Then change for clocking IN from 8:00am to 17:59pm  
Change back for clocking OUT from 18:00 until 23:59pm

**8.2** Select the com port connected to the reader

**8.3** Set any PIN from 0 to 65535 - use the PIN to set TC01UA's clock from it's keypad

**8.6** Transaction records can be downloaded here from reader to Time Clock for reporting

**8.5** PUT setting to reader

Close the window and start clocking