



# IMPULSE XL

**User's Manual**

Electronic Copy - Impulse XL®  
User's Manual  
Second Edition: December 1997

Information in this document is subject to change without notice and does not represent a commitment on the part of Laser Technology, Inc.

No part of this manual may be reproduced in any form or by any means, electronic or mechanical, including photocopying, recording, or information storage and retrieval systems, for any purpose other than the purchaser's personal use, without the express written consent of Laser Technology, Inc.

Copyright © Laser Technology, Inc., 1997.  
All rights reserved.

Printed in the United States of America.

Impulse and Criterion are registered trademarks of Laser Technology, Inc.  
HP is a registered trademark of Hewlett-Packard Company.

Written and illustrated by James Adams and Lolita Mannik

## LIMITED WARRANTY

Laser Technology, Inc. (LTI) warrants the Impulse to be in good working order for a period of one year from the date of purchase from LTI or an authorized LTI product dealer. Should the product fail to be in good working order at any time during the warranty period, LTI will, at its option, repair or replace the product at no additional charge, except as set forth below. Repair parts and replacement parts and products become the property of LTI. This limited warranty does not include service or repair of damage to the product resulting from accident, disaster, misuse, abuse, or non-LTI modification of the product.

To activate your warranty, return the warranty card from the front of this manual to LTI within 30 days of purchase. To obtain limited warranty service, deliver the product during the one-year period to the Laser Technology Service Center and provide proof of the purchase date. If the product is delivered by mail, you agree to insure the product or assume the risk of loss or damage in transit, and to prepay the shipping container or equivalent.

LTI hereby disclaims all other express and implied warranties for the product, including warranties of merchantability and fitness for a particular purpose. (Some states do not allow the exclusion of implied warranties, so the above limitation may not apply to you.)

## LIMITED WARRANTY

If the product is not in good working order as warranted above, your sole remedy shall be repair or replacement as provided above. In no event will LTI be liable to you for any damages, including any lost profits, lost savings, or other incidental or consequential damages arising from the use or inability to use such product. Furthermore, LTI shall not be held responsible if any LTI authorized dealer has been advised of the possibility of such damages, or for any claim by any other party.

*Note:* The Warranty Validation Card (at the front of this manual) must be completed and activated in order to benefit from this warranty. **No exceptions.**

In the unlikely event that your new LTI laser should require warranty or repair service, call us to receive a Return Merchandise Authorization (RMA) number before returning your product. Contact us at:

Laser Technology	Phone:	303-649-1000
7070 South Tucson Way	Fax:	303-649-97100
Englewood, CO 80112 USA	Web Site:	<a href="http://www.lasertech.com">www.lasertech.com</a>

## PRECAUTIONS

### **Never view the laser transmitter with binoculars or magnifying optics.**

Although the Impulse XL is an eye-safe Class I laser device, reasonable precautions should be taken in its operation. The use of optical instruments with this product can increase eye hazard.

### **Never attempt to view the sun through the scope.**

Looking at sun through the scope may permanently damage your eyes.

### **Never point the instrument directly at the sun.**

Exposing the lens system to direct sunlight, even for a brief period, may permanently damage the laser transmitter.

### **Do not expose the instrument to extreme temperatures.**

Impulse components are rated for a temperature range of -30° C (-22° F) to +60° C (+140° F). Do not expose the instrument to temperatures outside of that range.

## FOREWORD

The Laser Technology, Inc. Impulse XL is a light-weight, hand-held laser ranging instrument that allows you to quickly and conveniently measure distances, heights, and vertical angles. The Impulse XL uses sensors to measure distances and vertical angles, and menu-driven software to convert sensor readings to meaningful measurements.

The Impulse XL can be held easily in one hand and features simple three-finger operation: you execute most primary operations simply by sighting your target through the scope and briefly pressing one of three buttons conveniently located at your fingertips.

This manual describes the options, characteristics, and operation of the Laser Technology, Inc. Impulse XL laser ranging instrument. Your particular Impulse XL may not have all the options described.

The Impulse 100XL takes these measurements:

- Slope Distance
- Cumulative and Difference Distance

The Impulse 200XL takes these measurements:

- Slope Distance
- Horizontal Distance
- Vertical Distance
- Height
- Inclination
- Cumulative and Difference Distance

# TABLE OF CONTENTS

<b>STARTED QUICKLY .....</b>	<b>1</b>	<b>TAKING A BASIC MEASUREMENT .....</b>	<b>21</b>
BASIC IMPULSE PACKAGE .....	1	UNGROUPING SENSORS ON THE 200XL.....	23
ACCESSORIES .....	1	SETTING THE SCOPE DOT INTENSITY .....	23
INSERTING THE BATTERIES .....	2	SETTING THE MEASUREMENT UNITS.....	24
POWERING ON AND OFF.....	3	PERCENT SLOPE .....	25
TAKING A MEASUREMENT .....	3	MEASUREMENT RESOLUTION.....	26
<b>THE ANATOMY OF THE IMPULSE .....</b>	<b>6</b>	POWER CONSERVATION INTERVALS .....	26
SENSORS .....	6	<b>TAKING A HEIGHT MEASUREMENT .....</b>	<b>29</b>
SIGHTING SCOPE .....	7	HEIGHT RESOLUTION .....	32
FRONT AND BACK PANELS.....	8	<b>TAKING A MULTIPLE</b>	
<b>INSTRUMENT OPTIONS AND</b>		<b>MEASUREMENT .....</b>	<b>33</b>
<b>INDICATORS .....</b>	<b>9</b>	DIFFERENCE MEASUREMENTS .....	33
MEASUREMENT MODES .....	10	CUMULATIVE MEASUREMENTS.....	35
MEASUREMENT MODIFIERS .....	11	<b>TARGETING .....</b>	<b>38</b>
INDICATORS / WARNINGS .....	12	LISTENING TO THE INSTRUMENT .....	39
SETTINGS / OPTIONS .....	13	SETTING THE RANGE OFFSET .....	40
ERROR CONDITIONS.....	15	SETTING A GATE WINDOW.....	41
<b>USING THE BUTTON PANELS .....</b>	<b>16</b>	<i>Turning On the Gates .....</i>	<i>42</i>
<b>SETTING UP FOR LEFT-HANDED</b>		<i>Setting a Short Gate Value .....</i>	<i>42</i>
<b>OPERATION.....</b>	<b>19</b>	<i>Setting a Long Gate Value.....</i>	<i>43</i>
SWITCHING THE HAND STRAP.....	19	<i>Clearing Gate Values .....</i>	<i>43</i>
RECONFIGURING THE BUTTON PANELS.....	20	NOTES ON MEASUREMENT MODIFIERS .....	44

# TABLE OF CONTENTS

<b>THE EDIT MODE</b> .....	<b>46</b>	COMPASS MOUNT .....	67
<b>DOWNLOADING DATA</b> .....	<b>48</b>	COMPASS .....	67
DOWNLOADING.....	48	NOTE FOR CRITERION USERS .....	68
THE DNLD OPTION .....	49	<b>CARE AND MAINTENANCE</b> .....	<b>69</b>
OPTIONAL REMOTE TRIGGER .....	50	OPERATING TEMPERATURE.....	69
SERIAL INTERFACE SPECIFICATIONS .....	52	MOISTURE AND DUST PROTECTION .....	69
IMPULSE (IP200 OR IP100) FORMAT .....	52	SHOCK PROTECTION .....	69
<i>Queries</i> .....	52	CLEANING AND STORAGE .....	69
<i>Download Messages</i> .....	52	CARING FOR THE SCOPE.....	70
CR400 FORMAT.....	54	CHECKING THE DISPLAY SCREEN.....	70
<i>NMEA Compliance</i> .....	54	CHECKING THE BATTERIES .....	70
<i>Queries</i> .....	54	REALIGNING THE SCOPE .....	71
<i>Download Messages</i> .....	55	ALIGNING THE TILT SENSOR ON THE 200XL.....	73
SPECIFIC MESSAGE FORMATS .....	56	<b>SPECIFICATIONS</b> .....	<b>77</b>
<i>Version ID</i> .....	58		
<i>Basic Measurement &amp; Horizontal Vector</i> .....	59		
<i>Range Difference</i> .....	61		
<i>Range Cumulative</i> .....	62		
<i>Height</i> .....	63		
<b>USING A TRIPOD OR MONOPOD</b> .....	<b>64</b>		
YOKE .....	64		
YOKE MOUNT .....	65		



## GETTING STARTED QUICKLY

When you receive your Impulse XL laser instrument, check to see that you have received everything you ordered and that it all arrived undamaged.

### *Basic Impulse Package*

- Impulse laser instrument
- Belt clip
- Hand strap
- Two AA batteries
- User's manual
- Padded carrying case

### *Accessories*

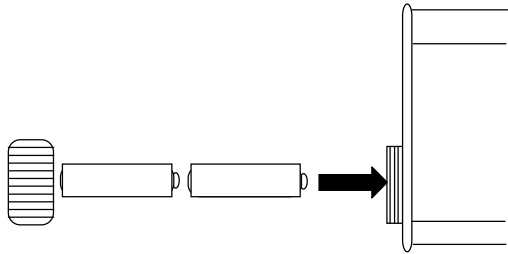
In addition, you may have ordered one or more of these optional accessories:

- Tripod yoke and mount
- Compass and mount
- Monopod
- Two Impulse download cables:
  - Turck 4-pin to DB 9-pin cable
  - Turck 4-pin to HP 200/48 10-pin cable
- Data collector and software

## GETTING STARTED QUICKLY

### *Inserting the Batteries*

Load the batteries by inserting them positive-end-first into the battery compartment on the Impulse's back panel.



Twist the battery compartment cap clockwise, finger tight, to secure it.

**Warning:** Do not use the new style of AA batteries with the “voltage check” feature built into the cell.

The “voltage check” cells are slightly larger in diameter and will cause problems when inserting into and extracting from the battery compartment. The diameter of the battery tube on your Impulse was chosen carefully to allow easy in/out of normal AA batteries with no excess room for cell shifting and possible loss of contact. Note that voltage check batteries will cause similar problems with most standard metal tube AA flashlights. Laser Technology will not be responsible for damage to the unit as a result of trying to force these new style cells in or out of the battery tube. Do **not** peel off the voltage check wrapper; this can cause an instrument short circuit.

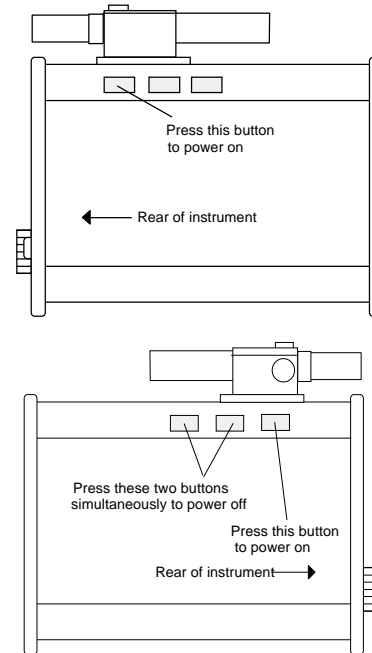
In addition, the instrument has its own battery voltage monitor, thus eliminating the need for voltage check cells.

## GETTING STARTED QUICKLY

### *Powering On and Off*

The Impulse has a row of three buttons on either side of the instrument. Later you will learn the full use of the button panels, including setting them up for left-handed use. For a quick start at the instrument, however, power on and off by using the buttons depicted in the illustrations at the right.

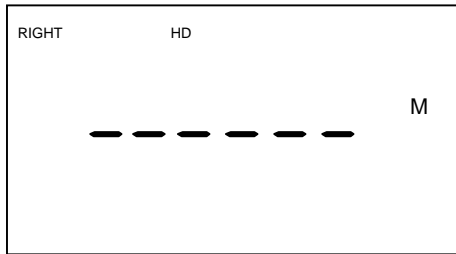
Power on by pressing the rear-most button (the button closest to you) on either button panel. Power off by simultaneously pressing the two forward-most buttons on the left panel. (The instrument may also power itself off after a period of inactivity.)



## GETTING STARTED QUICKLY

### *Taking a Measurement*

When you power on the instrument for the first time, the LCD screen on the rear panel shows this display:



The indicator "RIGHT," in the upper left quadrant of the screen, means you are using the right-hand button panel as your primary control panel.

The indicator "HD" means the instrument is prepared to take a horizontal distance measurement. (The slope distance indicator "SD" will appear on the 100XL model.)

The "M" means the measurement will be taken in meters. (No indicator in this location would mean the measurement will be taken in yards.)

To take a measurement, aim to a convenient target—an interior wall will do—press the rear-most button on right panel (the same button you used to power on the instrument), and hold it down until the instrument acquires a target.

You might not notice any difference the first time you press the button; in that case, just press it again. As a power conservation measure, the red dot sighting scope automatically turns off its

## GETTING STARTED QUICKLY

red dot if a measurement has not been taken within a predetermined time limit. With this scope, the first press will turn on the red dot, the second press will take the measurement. You may have a fixed-crosshair scope on your Impulse XL, in which case two button presses are not needed to take a measurement.

After a brief delay, the instrument emits a high-pitched beep and displays something like this:

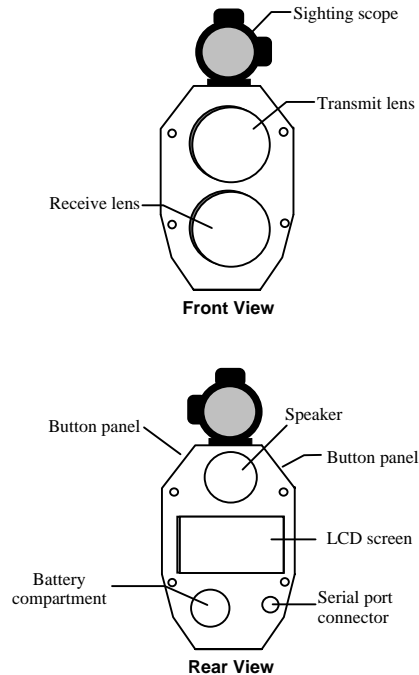


The large number in the center of the display is the distance to the target.

“DNLD” (in the lower right quadrant) means the number is available at the serial port. If you have a connection to a data logger or notebook computer, you could download the number to be stored and saved.

If you like, feel free to try some more button presses and take more measurements. The important thing for the moment is that you have experienced the Impulse’s basic point-and-shoot operation, and you have a feel for how the instrument uses indicators on the screen to let you know what operations are available to you at any given time.

## THE ANATOMY OF THE IMPULSE



The Impulse XL consists of a laser range sensor, a fluid tilt sensor (200XL model only), a sighting scope, and a data output port. The sensors are integrated with software controls and accessed through the two 3-button panels on either side of the unit and a liquid crystal display (LCD) screen on the rear panel.

### Sensors

The Impulse laser range sensor provides immediate access to slope distance values. The Impulse determines distance by measuring the time of flight of short pulses of infrared light. The Impulse has a broad spectrum of sensitivity and can work with both reflective and nonreflective targets.

## THE ANATOMY OF THE IMPULSE

The maximum measurement distance varies with target and environmental conditions. The absolute maximum is about 2200 meters (2400 yards) for the Impulse XL.

In the 200XL model, the tilt sensor measures vertical angles, which the Impulse uses to calculate height and elevation and to determine slope-reduced horizontal distances. The tilt sensor is capable of taking full 360 degree angular measurements, which is displayed by the tilt sensor as  $\pm 180$  degrees. The instrument held level is at 0 degrees, and is rotated up through +180 degrees, and down through -180 degrees.

### *Sighting Scope*

The sighting scope mounted atop the Impulse will vary depending upon which option you chose.

The single-power sighting scope features an in-scope, red aiming dot to help you aim accurately to the target. You can vary the intensity of the dot to account for different lighting conditions. (See "Setting the Scope Dot Intensity" under *Taking a Basic Measurement*).

The variable-power sighting scope features an in-scope crosshair, and allows you to adjust the magnification of the scope.

## THE ANATOMY OF THE IMPULSE

### *Front and Back Panels*

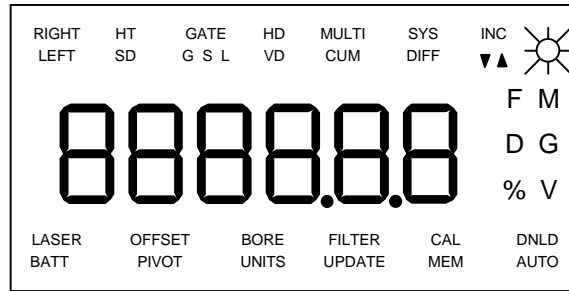
The Impulse has two lenses on the front panel. The top lens transmits infrared laser signals. The bottom lens receives signals back from the target and feeds signal information to the instrument's internal circuitry.

The back panel contains an LCD display screen, battery compartment access, and a serial port connector that allows you to connect the instrument to a data collector or notebook computer.



## INSTRUMENT OPTIONS AND INDICATORS

The internal software of the Impulse is organized into options. Each option represents a specific Impulse measurement or setup function and has a corresponding indicator on the LCD screen. To view all of the possible Impulse indicators at once, power up the instrument by pressing the Fire or Fire2 button, **and keep the button pressed down**. This is also a good way for you to check if all the components on your display are working properly. The display will look like this:



The display indicators are grouped by function, and fall into four categories: measurement modes, measurement modifiers, indicators/warnings, and settings/options. Note: Your instrument may not have all the features described.

## INSTRUMENT OPTIONS AND INDICATORS

### *Measurement Modes*

Using a laser sensor and optional tilt sensor, the Impulse XL can take six possible measurements:

Indicator	Function	Explanation
HT	Height	(200XL only) Measures the height of an object
HD	Horizontal Distance	(200XL only) Measures the level distance between the Impulse and the plane of the target object
VD	Vertical Distance	(200XL only) Measures the distance between a target object and the perpendicular to the path of the horizontal distance
SD	Slope Distance	Measures the straight-line distance between the Impulse and a target object
INC	Inclination	(200XL only) Measures the angle of inclination between the Impulse at level, and the target
MULTI	Multiple Measurements	Allows the Impulse to take more than one measurement in succession CUM - maintains a cumulative distance measurement for a succession of targets DIFF - calculates the differences between a base distance and a succession of targets

## INSTRUMENT OPTIONS AND INDICATORS

### *Measurement Modifiers*

Measurement modifiers are options that can help you select or eliminate targets and help you take the most accurate measurements possible. The measurement modifiers are:

<b>Indicator</b>	<b>Function</b>	<b>Explanation</b>
GATE	Measurement Gate	Sets up a measurement “gate” or “window.” When gates are set, the Impulse will only measure targets that are at or beyond the window’s minimum distance, and at or within the window’s maximum distance G - Gate option is on S - Short gate is set, increasing the minimum measuring distance L - Long gate is set, decreasing the maximum measuring distance
OFFSET	Range Offset	Adds or subtracts a distance from the slope distance measurement

## INSTRUMENT OPTIONS AND INDICATORS

### *Indicators / Warnings*


These indicators impart status, warnings, or hints. They are:

Indicator	Function	Explanation
LASER	Laser	The laser sensor is firing
BATT	Battery	(Flashing) Time to replace the batteries
DNLD	Download	Measurement is available for download
▼	Down Arrow	(Flashing) (200XL only) Take base measurement in HT option or first measurement in tilt calibration
▲	Up Arrow	(Flashing) (200XL only) Take top measurement in HT option or second measurement in tilt calibration

## INSTRUMENT OPTIONS AND INDICATORS

### *Settings / Options*

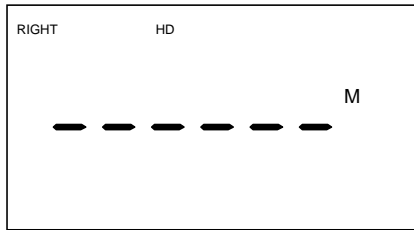
The Impulse has system settings and options that allow you to use the Impulse in the most efficient and convenient way for you. The following list covers the options that are user-selected.

Indicator	Function	Explanation
SYS	System	Selects Impulse operating characteristics
RIGHT/LEFT	Right or Left	Right or left button panel is primary
BORE	Bore Sight	Aligns the red dot or crosshair in the sighting scope
CAL	Tilt Calibration	(200XL only) Calibrates the tilt sensor
AUTO	Automatic Download	Measurements downloaded automatically
	LED Backlight	LED backlight is on
UNITS	Units	Select measurement units F - (English units) HT and VD in Feet; SD, HD and MULTI in Yards M - Meters D - Degrees G - Grads % - Percent Slope
V	Volts	Battery voltage reading

## INSTRUMENT OPTIONS AND INDICATORS

### *Additional Note:*

The middle portion of the screen, in addition to displaying measurements, is itself sometimes used as an indicator of sorts; if dashed lines appear, the instrument is ready to take a measurement; if the middle of the screen is blank, the option has suboptions that can be accessed by pressing Fire.



HD has no subfunctions. The dashes show where the measurement will display.



The SYS option has subfunctions; use the Fire button to enter the subprocedure.

## INSTRUMENT OPTIONS AND INDICATORS

### *Error Conditions*

The middle area of the screen is also where error codes are displayed.

Impulse error codes are in the form Exx, where “xx” is an error number. The possible error indicators are listed and explained in the table at the right.

If the Impulse detects an error in a measurement or download attempt, a low-pitched tone issues from the speaker and an error code displays.

The most common error is that the Impulse simply cannot find the target. Most other errors are similarly trivial; correcting them requires only that you reshoot the measurement you were trying to take, or try the download again.

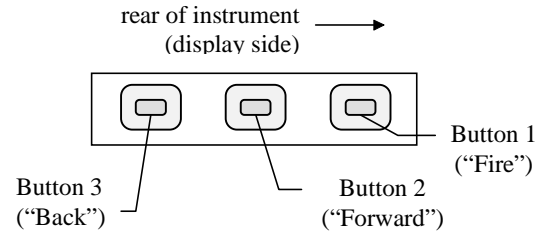
Code	Explanation
doF	Display overflow. The measurement exceeds the display capacity, or measurement angle at $\pm 90$ degrees.
EoF	Editor overflow.
E01	Failure to lock on target. Reposition instrument and retake measurement.
E02	Target lost during measurement. Reposition and retake measurement.
E03	Unstable aim. Steady the instrument and retake the measurement.
E04	(200XL only) Invalid tilt sensor reading. Contact Laser Technology if error persists.
E05	(200XL only) Tilt reading over $\pm 90$ degree limit on % slope or height measurement. Reposition and retake measurement.
E06	(200XL only) Tilt calibration error. See the Care and Maintenance section of this manual.
E52	Temperature too hot. Stop operation.
E53	Temperature too cold. Stop operation.
E60 E61 E62	Calibration or code memory checksum failure. Contact Laser Technology.

## USING THE BUTTON PANELS

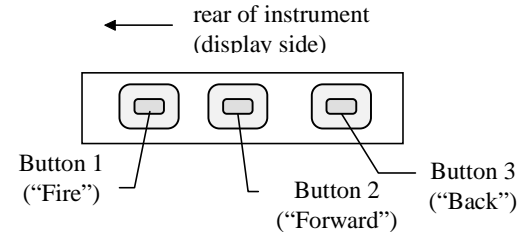
You control the Impulse through two 3-button panels on either side of the instrument. One panel is always designated the primary button panel; the other, the secondary panel. You can tell which panel is primary by the LEFT or RIGHT indicator showing in the upper left quadrant of the back-panel display screen.

The two button panels are identically laid out. The button nearest the rear panel is the “Fire” button. The middle button is the “Forward” button. And the button nearest the front panel is “Back.”

In the Impulse lexicon, buttons on the primary control panel are referred to by the button name, while buttons on the secondary panel are referred to by the name suffixed with a ‘2.’ So “Fire” means the primary Fire button; “Fire2” means the secondary Fire button.



**Left-side Button Panel**



**Right-side Button Panel**



## USING THE BUTTON PANELS

Because the Impulse features some fairly complex operations, but has a total of only six buttons to effect those operations, the specific function assigned to a button differs with:

- the operation,
- whether the button is on the primary panel or secondary panel, and
- how long you hold the button down. (A “short” press of a button simply means you press it and release it immediately. A “long” press means you press the button and hold it down for about two seconds.)

In general, Forward and Back move through menus, and Fire selects options, while the secondary buttons control the scope aiming dot, display backlight, and edit mode. Specifically, the buttons have the functions indicated in the table on the next page.

## USING THE BUTTON PANELS

Button	Function
Fire	<ul style="list-style-type: none"> <li>- Powers on the instrument.</li> <li>- For options with submenus (HT, GATE, MULTI, SYS), selects the option.</li> <li>- For measurement options (SD, HD, VD, INC), initiates a measurement by firing the laser. With red dot sighting scope: the first press turns on the red dot if it is off, the second press fires the laser.</li> <li>- In system setup functions, selects or toggles values.</li> <li>- In edit mode, accepts a manually entered value.</li> </ul>
Fire2	<ul style="list-style-type: none"> <li>- No function in measurement operations.</li> <li>- In system setup functions, invokes optional "edit mode" so a value can be entered or altered.</li> <li>- Once in edit mode, advances to the next digit.</li> </ul>
Forward	<ul style="list-style-type: none"> <li>- Moves "forward" in the options in a menu.</li> <li>- When DNLD is showing, sends a download message out the serial port.</li> <li>- In edit mode, first press restores the edit value, second press abandons the edit.</li> <li>- Long press: sends a download message out the serial port.</li> </ul>
Forward2	<ul style="list-style-type: none"> <li>- With a red dot sighting scope, varies the intensity of the scope dot.</li> <li>- When pressed simultaneously with Back2, turns off the power.</li> <li>- In edit mode, increments the digit value.</li> </ul>
Back	<ul style="list-style-type: none"> <li>- Moves "backward" in the menu (selects the previous option or "backs out" of a submenu).</li> <li>- Clears DNLD indicator.</li> <li>- In edit mode, first press restores the edit value, second press abandons the edit.</li> <li>- Long press: clears out the current measurement value.</li> </ul>
Back2	<ul style="list-style-type: none"> <li>- Turns the screen backlight on/off.</li> <li>- In edit mode, decrements the digit value.</li> <li>- When pressed simultaneously with Forward2, turns off the power.</li> </ul>

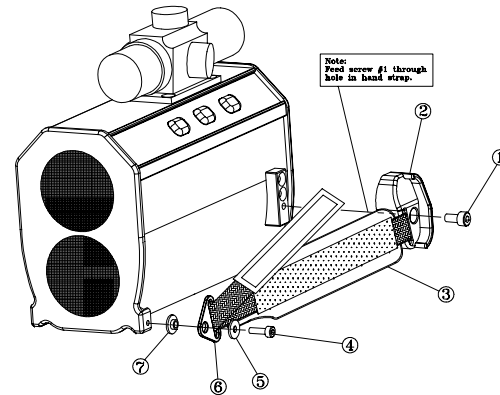
## SETTING UP FOR LEFT-HANDED OPERATION

The Impulse can be operated with equal ease by both right-handed and left-handed operators. The instrument comes configured for right-hand users but can be easily reconfigured by doing two things:

- Switching the hand strap to the left side of the instrument.
- Reconfiguring the button panels.

### *Switching the Hand Strap*

To switch the hand strap, remove the screws that attach the strap to the mounting plates. Use the left thumb block and position the strap on the left side of the instrument so the free end of the adjusting strap is facing the rear of the instrument, and the holes in the strap base align with the holes in the mounting plates. Then simply reattach the screws.



PART #	PART NAME	QUANTITY
1	Screw, M4x8	1
2	Thumb Block, Left	1
3	Hand Strap	1
4	Screw, M3x10	1
5	Flat Washer	1
6	Tri-Ring	1
7	Shoulder Washer	1

## SETTING UP FOR LEFT-HANDED OPERATION

### *Reconfiguring the Button Panels*

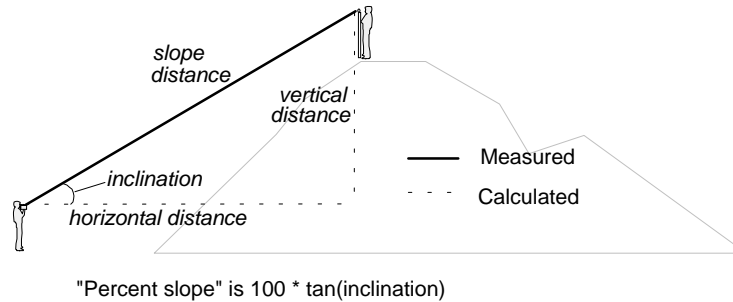
The Impulse has a three-button control panel on each side of the instrument. One of those panels is designated the primary panel; the other, the secondary panel. The primary panel (denoted by “RIGHT” or LEFT” in the upper left corner of the display) controls the primary functions of the instrument. The secondary panel controls ancillary functions and generally gets much less use. For easy handling, you will usually want the primary panel to be the one on the same side as the hand strap.

Follow this procedure to switch the primary panel:

1. Press the Fire button to power on the instrument.
2. Repeatedly press Forward or Back until the indicator SYS shows in the upper right quadrant of the back panel display screen.
3. Press Fire to enter the SYS submenu.
4. Repeatedly press Forward until SEL shows in the middle of the display screen, and the panel indicator begins flashing in the upper left quadrant. (This is the last item in the SYS submenu.)
5. Press Fire to toggle the primary panel between RIGHT and LEFT.
6. With the desired panel indicator showing, press Forward to accept the change. At this point, the button panels have been switched and you will need to press Back on the new primary panel to back out to the main menu.

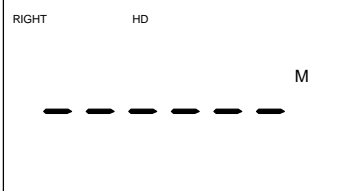
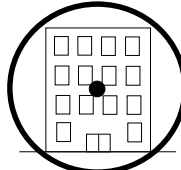
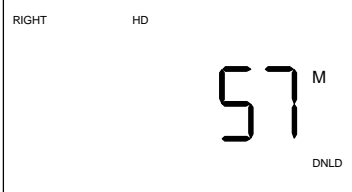
## TAKING A BASIC MEASUREMENT

The Impulse 200XL takes five basic measurements. Two —slope distance and inclination—are measured directly. The remaining three—horizontal distance, vertical distance, and percent slope—are calculated. The Impulse 100XL has no way to measure angles, and takes only slope distance measurements. The five measurements are related; the relationships among them are illustrated here:



To get a feel for how the Impulse operates, choose a target near you. For the purposes of this exercise, the target can be as prosaic as, say, a wall at the end of the corridor outside your office or the building across the street. Then make the button presses indicated in the table. The procedure assumes that you are starting from scratch, with the Impulse powered off.

## TAKING A BASIC MEASUREMENT

Do this...	...to get this result:
Press Fire. (With a 200XL, you get an HD indicator, with a 100XL, you get an SD indicator.)	
Sight the target through the scope	
Press Fire and hold the Fire button down until the instrument locks on a target, then release	

You have just taken an HD (horizontal distance) measurement to a building, or whatever target you chose. Each of the basic measurements operates in essentially the same simple way—power on, aim, and fire—except that you sometimes have a couple of other considerations.

First, the screen must be displaying the indicator for the measurement you want to take: HD for horizontal distance, SD for slope distance, VD for vertical distance, INC for inclination, etc. If the correct indicator isn't showing, press Forward until it is.

Second, if you are using a red dot sighting scope, the scope aiming dot may turn itself off after about 15 seconds of inactivity, as a power conservation strategy. If the red dot isn't showing, press Fire to turn it back on. (See *Power Conservation Intervals*, later in this section.) If after pressing Fire the red dot still isn't showing, you probably need to adjust the intensity of the dot. (See *Setting the Scope Dot Intensity*, later in this section.)

## TAKING A BASIC MEASUREMENT

### *Ungrouping Sensors on the 200XL*

The Impulse 200XL takes only those readings necessary to satisfy the current option. This makes it possible to “ungroup” the sensors by taking a separate reading with each sensor. Then by scrolling to another option, the instrument will combine those readings to calculate other related measurements.

For example, when SD is measured, only the range sensor is activated, and when INC is measured, only the tilt sensor is activated. Now, a horizontal distance (HD) measurement is calculated from the slope distance (SD), which is read by the range sensor, and the inclination (INC), which is read by the tilt sensor. The straightforward way of measuring HD is to simply shoot when the HD indicator is showing, so the instrument calculates everything at once.

But suppose, for example, that an obstruction or other unusual situation prevents you from taking a reliable reading with one or the other sensor. In that case, you can shoot an SD measurement, reposition the instrument slightly, and then take an INC measurement. Then scroll to HD, and you will see that the instrument has calculated a horizontal distance from your two separate sensor readings.

## TAKING A BASIC MEASUREMENT

### *Setting the Scope Dot Intensity*

The optional red dot sighting scope has six intensity settings which vary from bright to off. Adjust the red dot brightness by pressing the Forward2 button repeatedly until the desired intensity is achieved.

### *Setting the Measurement Units*

The Impulse will express measurements either in English units or in metric units.

If you select English units, heights and vertical distances will be displayed in **feet**, but horizontal distances, slope distances, and multiple measurements will be displayed in **yards**.

Selecting metric units means all measurements are given in meters, with heights and vertical distances being resolved to tenths of meters, and horizontal distances, slope distances, and multiple measurements expressed in whole meters.

If you're taking a measurement and are not sure which units will be displayed, just remember that if no units indicator is displayed next to the number, the measurement is in yards; M denotes meters; F denotes feet.

You select the units by accessing the SYS option. Here is the procedure:

1. Use Forward and Back as needed to display the SYS indicator.
2. Press Fire to select the SYS option.
3. Press Forward repeatedly until the UNITS indicator at the bottom center of the display screen begins flashing, and SEL shows in the numeric display area.



## TAKING A BASIC MEASUREMENT

4. Press Fire to toggle between the F (feet/ yards) and M (meters) indicators.
5. Press Forward to select the F or M. The D (degrees) or G (gradient) indicator begins flashing.
6. Next, press Fire to toggle between D and G.
7. Press Forward to select D or G. The % indicator flashes, and OFF shows in the numeric display.
8. If you wish to turn on Percent Slope, press Fire.
9. Press Back twice to accept the new settings and back out to the main display.

*Note:* Changing your range measurement units will affect several values you may have stored in memory. The range offset and gate values will be reset to zero. Basic and height measurements are cleared, and only a cumulative distance total will be converted from the current measurement units to the newly selected units.

### ***Percent Slope***

Percent slope (indicated by “%”) is a calculation equal to 100 times the tangent of the inclination angle. It is a variant way of expressing the inclination.

## TAKING A BASIC MEASUREMENT

An inclination angle of 5 degrees, for example, is equal to a slope of about 8.75 percent. An inclination of 90 degrees will generate the display overflow error “doF,” and inclinations that exceed  $\pm 90$  degrees will generate error “E05.”

If you have turned % on in the SYS-UNITS option, and an inclination measurement is displayed, that measurement is a percent slope, not an inclination angle. The % indicator shows to remind you. (Note, however, that you can get percent slopes only in the basic measurement displays, never in the Height measurement displays. Note also that the instrument never downloads a percent slope. It always downloads the inclination angle. The D/G indicator indicates the units to be used in the download message.)

### *Measurement Resolution*

Horizontal distances and slope distances are displayed in whole yards or meters. Vertical distances and heights are displayed in whole feet or tenths of meters.

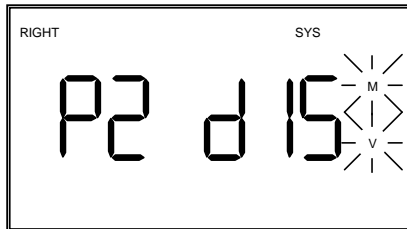
### *Power Conservation Intervals*

To help conserve its batteries, the Impulse incorporates two timed power-off intervals, one for the red dot sighting scope and one for the instrument as a whole. (The red dot interval does not affect power conservation in a fixed-crosshair scope.) By default, if there is no instrument activity for 15 seconds, the red dot turns off. If there is no activity for two minutes, the instrument shuts down completely.

## TAKING A BASIC MEASUREMENT

If those intervals are inconvenient for the measurement conditions you find yourself in, you can change the intervals through the SYS option. Here is the procedure:

1. Press Forward/Back as necessary to show the SYS option.
2. Press Fire to select the SYS option.
3. Press Forward repeatedly until the M and V indicators begin flashing at the right center of the screen. The numeric display area will be showing the current interval settings, like this:



The P notation indicates the power-off interval in minutes; the d shows the scope-dot interval in seconds.

4. Press Fire repeatedly until the numeric display shows the intervals you want. Your choices are these:

P2 d15 power off interval = 2 minutes  
scope dot interval = 15 seconds

P5 d15 power off interval = 5 minutes  
scope dot interval = 15 seconds

P5 d60 power off interval = 5 minutes  
scope dot interval = 60 seconds

ALL On both intervals full on (the instrument will not power down, and the scope dot will never turn off). Care should be taken in this mode, as it is highly power consumptive.

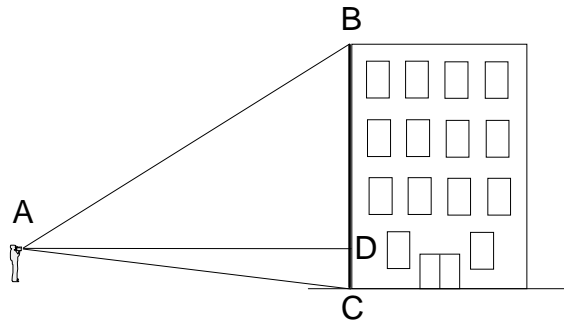
## TAKING A BASIC MEASUREMENT

5. Press Back twice to accept the new settings and back out to the main display.

If the instrument powers down while you are using it, all measurements will be lost except for cumulative distance.

## TAKING A HEIGHT MEASUREMENT

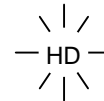
Measuring a height presents a simple geometric problem easily within the capabilities of the Impulse 200XL: solve the triangle formed by the object, the ground, and the instrument.



*Height measurement: The instrument first calculates AD, then measures angles CAD and DAB. It then calculates BD and DC. The height is the sum of BD and DC.*

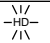
The Impulse implements the process with the HT option. The option works by requiring that the measurements be taken in a specific order. The procedure is in the table on the next page; it begins by assuming the Impulse is powered off.

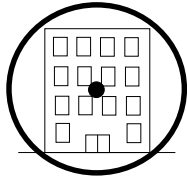
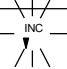
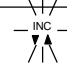
You will notice, by the way, that an option is often presented in the procedure surrounded by a nimbus, like this:



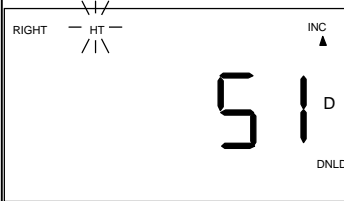
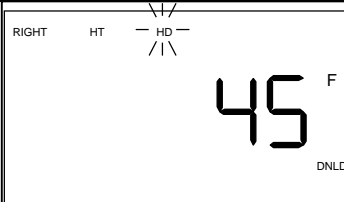
That simply indicates that, on the screen, the option will be flashing on and off. A flashing indicator shows you the measurement you need to take next; the indicator for the number being displayed also shows on the screen, but does not blink.

## TAKING A HEIGHT MEASUREMENT

Button/Action	Result (example)
Press Fire to turn on the instrument	<div style="border: 1px solid black; padding: 5px; width: fit-content;"> <span style="float: left;">RIGHT</span> <span style="float: right;">HD</span>    <p style="text-align: center;">-----</p> </div>
Press Back to reach the Height indicator	<div style="border: 1px solid black; padding: 5px; width: fit-content;"> <span style="float: left;">RIGHT</span> <span style="float: right;">HT</span> </div>
Press Fire to advance into the height subprocedure	<div style="border: 1px solid black; padding: 5px; width: fit-content;"> <span style="float: left;">RIGHT</span> <span style="float: right;">HT</span> <span style="float: right; margin-right: 20px;">  </span>    <p style="text-align: center;">-----</p> </div>

Button/Action	Result (example)
Sight the target through the scope	
Press Fire to take the horizontal distance measurement (expressed in yards or meters)	<div style="border: 1px solid black; padding: 5px; width: fit-content;"> <span style="float: left;">RIGHT</span> <span style="float: right;">HT</span> <span style="float: right;">HD</span>    <div style="text-align: right; margin-right: 20px;">  </div> <p style="text-align: center; font-size: 2em; font-weight: bold;">13</p> <p style="text-align: right; font-size: 0.8em;">DNLD</p> </div>
Aim to the base of the object (even if you can't sight it), and press Fire to take the base inclination reading	<div style="border: 1px solid black; padding: 5px; width: fit-content;"> <span style="float: left;">RIGHT</span> <span style="float: right;">HT</span>    <div style="text-align: right; margin-right: 20px;">  </div> <p style="text-align: center; font-size: 2em; font-weight: bold;">-16</p> <p style="text-align: right; font-size: 0.8em;">D DNLD</p> </div>

## TAKING A HEIGHT MEASUREMENT

Button/Action	Result (example)
Aim to the top of the object (even if you can't sight it), and press Fire to take the top inclination reading	
Press Fire to display the height of the object (expressed in feet or meters)	

When the procedure completes, the height calculation is showing in the middle of the screen and the HD indicator is blinking, signifying that the instrument is prepared to take a horizontal distance measurement of another target. At this point, you have several options:

- Pressing Forward downloads the height measurement you just took.
- Pressing Fire takes the horizontal distance measurement for another HT procedure.
- Pressing Back backs up so you can retake one or more measurements. Note that the indicators do not blink in this instance. Any measurement you retake affects the final height calculation.

To clear the HD measurement, long-press Back. Multiple short presses back you out to the main display level (which also clears the measurement).

## TAKING A HEIGHT MEASUREMENT

If you are measuring in feet, be aware that your horizontal distance measurement will be displayed in yards (you will know it's yards because there will be no units indicator displayed), and the final height value will be shown in feet.

### *Height Resolution*

Height values are given in whole feet or tenths of meters.

### *Additional Notes:*

The Impulse uses an HD and the two successive INC readings to calculate a height. Therefore, when taking a base or top angle reading, you don't need an actual target to shoot to since only the tilt sensor is activated. You should aim to where you think the top of the target actually is, not just the highest point you can see.

The best heights for tapered objects (such as trees) or non-vertical objects are taken by placing a reflector, if possible, directly next to the target, at the center of its girth. This insures the most accurate horizontal distance reading, thus leading to the most accurate height calculation.

Also note that a programmed range offset will not affect your height calculation.



## TAKING A MULTIPLE MEASUREMENT

The multiple measurement option (MULTI) allows the Impulse to take measurements to a succession of targets. What it does with those measurements depends upon the MULTI suboption you are in at the time:

- DIFF (Difference) compares each measurement to one set point and reports the difference.
- CUM (Cumulative) accumulates the measurements and maintains a running total.

### *Difference Measurements*

Difference measurements calculate the differences between a succession of targets and a single set point. You can use slope distance measurements or horizontal distance measurements (200XL only).

Here's how you take difference measurements:

1. Press Forward/Back until the MULTI indicator shows in the upper right quadrant of the display screen.
2. Press Fire to enter the MULTI subprocedure. The DIFF indicator displays.
3. Press Fire to enter the DIFF subprocedure.

**Impulse 100XL:** The next display is a series of dashes, with two arrows flashing in the right corner. The instrument is now ready to accept the set point.

**Impulse 200XL:** SEL shows in the numeric display area, and HD flashes just to the left of MULTI.

## TAKING A MULTIPLE MEASUREMENT

At this point, you must select whether to take all of the measurements as horizontal distances or slope distances. Horizontal distance is already selected, as shown by the flashing HD indicator. To use HD measurements, then, simply press Forward to move to the next display.

To select SD measurements, press Fire to start SD flashing. Then press Forward to move to the next display.

The next display is a series of dashes, with two arrows flashing in the right corner. The instrument is now ready to accept the set point.

4. *To set the point by laser*, aim to a suitable target and press Fire. If the aiming dot is off on the red dot scope, the first press turns it on, and you must press Fire again to measure the target.

*To set the point manually*, invoke the Impulse edit mode. (See *The Edit Mode* for more information.)

*Note:* An edited set point cannot exceed  $\pm 99999$  meters or yards, and a set point measured by the laser can extend to the full range of the instrument.

5. Press Forward. The numeric display area shows dashes, and the arrows turn off.

## TAKING A MULTIPLE MEASUREMENT

6. Aim to a target and press Fire. Again, if the aiming dot is off on the red dot scope, the first press turns it on, and you must press Fire again to fire the laser.
7. The numeric display area shows the distance difference between the set point and the target you just measured. To download the value, press Forward.
8. Repeat step 6 for as many targets as you have. When you are finished, press Back twice to back out to the main display.

Exiting the difference measurement option will clear the difference measurement in memory.

### *Cumulative Measurements*

A cumulative measurement lets you move from one target point to another, stopping at each one to measure the distance to the next target point. The instrument accumulates the measured distances in SD in the 100XL, and both SD and HD in the 200XL to give you a running total.

Here's how you take a CUM measurement:

1. Press Forward/Back until the MULTI indicator shows in the upper right quadrant of the display screen.
2. Press Fire to enter the MULTI subprocedure. The DIFF indicator displays.
3. Press Forward to toggle to the CUM indicator.

## TAKING A MULTIPLE MEASUREMENT

4. Press Fire to enter the CUM subprocedure.

**Impulse 100XL:** The next display is a series of dashes, with two arrows flashing in the right corner. The instrument is now ready to take the first measurement.

**Impulse 200XL:** SEL shows in the numeric display area, and HD flashes just to the left of MULTI.

At this point, you can select whether to take all of the measurements as horizontal distances or slope distances. You can toggle between the two at any time.

Horizontal distance is already selected, as shown by the flashing HD indicator. To use HD measurements, then, simply press Forward to move to the next display.

To select SD measurements, press Fire to start SD flashing. Then press Forward to move to the next display.

The next display is a series of dashes, with two arrows flashing in the right corner. The instrument is now ready to take the first measurement.

5. Aim to a target and press Fire. If the aiming dot is off on the red dot scope, the first press turns it on, and you must press Fire again to fire the laser.
6. At this point, you have two options.

If you are dissatisfied with the measurement for some reason, repeat step 5 to retake the measurement.

## TAKING A MULTIPLE MEASUREMENT

If you are satisfied with the measurement, and wish to add it to your total, press Forward. The instrument adds the current measurement to the total and displays the new total.

7. When the total is showing, you have another two options.

To simply take the next measurement without downloading, return to step 5.

To download the current total, press Forward. The arrows begin flashing again, and you may then return to step 5 for the next measurement.

In most cumulative distance measurement exercises, you will want to take a series of measurements, and download only once, when a series of related measurements are complete.

### *Additional Notes:*

The cumulative measurement total is saved in memory even if the instrument is powered off. If you turn the instrument on and scroll back to the MULTI - CUM option, you can resume the procedure with step 7.

To clear out the current total and begin another series of measurements, long-press the Back button while the cumulative distance total is showing.

In the 200XL, the instrument keeps the total in both SD and HD, and you can switch between the two at any time. If you are viewing a single distance measurement on the display, press Back once and repeat step 4 to toggle between SD and HD. If you are viewing a cumulative total, press Back twice and repeat step 4.

## TARGETING

When selecting a target, keep in mind that most surfaces can be measured directly. However, long distances, multiple potential targets, or lack of an actual physical object to shoot to may require additional techniques. Here are some hints, which are discussed in greater detail later in this section:

- *In the absence of a physical target*, a simple sheet of white paper suffices when shooting to moderate distances.
- *Long ranges* are most easily acquired using a spectral or retroreflector.
- *Brush, rain, fog, or snow* can all serve as unintended targets, reflecting light back to the instrument. A gate window can be set up to reject targets outside the range window.
- *The absolute minimum range* of the Impulse is essentially zero: in theory, you can measure objects right up against the front panel. You can increase the minimum range artificially by setting the short measurement gate.
- *The absolute maximum range* is about 2200 meters (2400 yards). You can decrease the maximum range artificially by setting the long measurement gate.
- *The most accurate angle measurements* (with a 200XL) are taken when the instrument is held level with respect to its left/right axis.

## TARGETING

### *Listening to the Instrument*

The Impulse emits a variety of ticks and tones when it takes readings. The sounds vary depending on what the instrument is doing, and you can tell what is happening during a measurement simply by listening. The table below explains the various sounds.

<b>Sound</b>	<b>Meaning</b>
Growl (extremely fast ticking)	The instrument is trying to lock onto a target for a range measurement. Nearly imperceptible when the instrument acquires the target immediately. When the growling quits, the target is acquired and range readings are being taken.
Double high-pitched tone	The instrument has completed the measurement, and all sensors acquired readings.
Single high-pitched tone	The instrument has completed the measurement, but one or more of the sensors failed to get a reading. The error message is indicated on the display screen.

If you're having trouble finding a target (you will know this by the growl you hear), you can hold the Fire button down and pan the instrument around until it locates a target. The laser will try to acquire a target for up to 15 seconds, and if it is unsuccessful, it will time out and another trigger press will be needed to initiate a new measurement.

## TARGETING

When taking a measurement, be sure to keep the trigger pressed down and hold the instrument steady until you hear the double-beep. Moving the instrument may cause inaccurate readings if the laser is shifted from one target to another during a measurement.

### *Setting the Range Offset*

The Impulse has a feature that allows you to alter the measuring point of the instrument. You may want to move it closer to your target, or further away, depending upon your circumstances. For these instances, the Impulse provides the OFFSET option, which adds (or subtracts) a distance to the slope distance measurement. Since slope distance is used to calculate HD and VD in a 200XL, the range offset will also affect these options.

For example, if the point you want to take a measurement from is inconvenient to occupy, you could shoot the distance to that point, then enter it as an offset that will be figured into all subsequent measurements.

Range offsets up to  $\pm 3000$  meters may be entered. A positive offset will lengthen your measurements, or essentially move back your measurement point, and a negative offset will shorten the measurement by moving the measurement point closer to the target.

Here's how to specify a range offset:

1. Use Forward/Back as necessary to show the SYS option indicator.
2. Press Fire to select the SYS option.



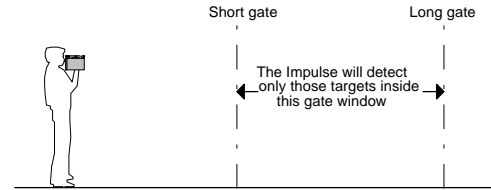
## TARGETING

3. Press Forward repeatedly until the OFFSET indicator in the lower left portion of the display begins blinking. At that point, the numeric display shows the current range offset value with the first digit blinking.
4. Edit in the range offset value in whole feet or meters. (Refer to *The Edit Mode* chapter for more information.)

You will know that a range offset is “On” when you see the OFFSET indicator in the lower left portion of the display on SD, HD, and VD measurements. Remember, the range offset is added onto the SD measurement, which is used to calculate HD and VD. However, it does not affect height measurements.

### Setting a Gate Window

Using the Gate option, it is possible to restrict the Impulse to targeting objects within specified ranges. The ranges specified, which are always slope distance values, form the “gate window.” The range minimum is called the “short gate;” the range maximum, the “long gate.”



In essence, the gate window artificially extends the instrument’s minimum range and restricts its maximum range. One of the uses of the gate window is to help you make certain you are getting the right target when objects near you or just beyond your intended target present a danger of giving you false readings.

## TARGETING

You needn't set both gates. If you set only the short gate, for example, the gate window extends from the short gate value to the maximum range of the instrument. Potential targets between you and the length of the short gate will be rejected.

For example, if you are trying to acquire a building as a target, it is helpful to set the short gate to a value that is slightly shorter than the distance to the building. Objects such as brush, weather effects, or a window you may be shooting through can all serve as unintended targets.

You can set a gate by shooting to a target or by editing in a value. The procedure:

### Turning On the Gates

1. Use Forward/Back as necessary to show the GATE indicator.
2. Press Fire to select the GATE option. The numeric display area shows the current state of the GATE option.
3. Press Fire to toggle GATE between On and OFF. If the gates already have values assigned, the S and L indicators will display (in addition to the G indicator).
4. *To set gate values, press Forward.* The S indicator flashes and the short gate value displays. Continue to the next step.

*To back out to the main display, press Back.*  
No gate values have been set.

## TARGETING

### Setting a Short Gate Value

5. *To set the gate by laser*, aim to an appropriate target and press Fire.

*To set the gate manually*, use the editing function (See *The Edit Mode* chapter later in this manual for more information).

6. *To set a long gate value*, press Forward. The L indicator flashes, and the long gate value displays. Continue to the next step.

*To back out to the main display*, press Back. The short gate is now set, and the S indicator is displayed in distance measurement modes.

### Setting a Long Gate Value

7. *To set the gate by laser*, aim to an appropriate target and press Fire.

*To set the gate manually*, use the editing function (See *The Edit Mode* chapter later in this manual for more information).

8. Press Back to back out to the main display. The long gate is now set, and the L indicator is displayed in distance measurement modes.

### Clearing Gate Values

If you want to clear out a gate value instead of setting it, access the value as described above and long-press Back or edit in zero.

## TARGETING

Keep these facts in mind when using gates:

- Due to hardware constraints, gates work best when the short gate value is 5 to 6 meters/yards beyond the targets you wish to reject.
- Gates are applied to SD measurements only, and may not be exactly where expected in HD or VD. See the diagram in the beginning of *Taking a Basic Measurement* to clarify the relationship between these measurements.
- The gate window is restricted to a width of 2 meters/yards. If you set the gate window too narrow, the instrument automatically adjusts it by resetting either the short or long gate, taking the most recent value entered as the standard to recalculate the other by. So if the short gate is already set at 10 yards, for example, and then you set the long gate to 11 yards, the instrument resets the short gate to 9 yards.

- A maximum value of 3000 meters/yards for the short gate, and 3002 meters/ yards for the long gate may be entered.

### **Notes on Measurement Modifiers**

- When the instrument is powered off (or turns itself off), the gate option is reset to OFF, but gate values are retained in memory. However, the range offset setting is saved upon powering down.
- When using gates and offsets together, keep the following in mind: Gates and offsets are additive; a gate will reflect the same offset that is applied to the target. Say, for example, that you set the range offset to 15 meters and the short gate to 30 meters. If you scroll back to view the short gate value, it will then read 45 meters. But remember, the 45 meters is from the virtual measuring point 15 meters behind you. The gate is still 30 meters in front of you.

## TARGETING

- The range offset has the same additive effect on the long gate setting.
- A range offset does not affect ranges in HT mode. And, although the range offset will not alter the physical location of your gates, it will alter the gate values seen on the display, so you may want to clear the range offset to avoid confusion.

## THE EDIT MODE

The Impulse has an editor which can be used to manually enter numeric values for the range offset, tilt calibration offset (200XL only), gate distances, and the set point of difference distance measurements.

The range offset and tilt offset are always input manually, and entering these submenus automatically invokes the editor.

When it is more desirable to manually input gate distances and the set point of difference distance measurements rather than shooting them in with the laser, an optional editor is available by pressing Fire2 when a distance measurement is requested by the Impulse.

Once in the editor, follow this method:

- The left-most digit will be flashing. Press Forward2 or Back2 to toggle the first digit between zero (which represents a positive value) and the minus sign (-).
- Fire2 advances the edit to the next digit to the right. Use Forward2 and Back2 to increment or decrement the value of the digit. Repeat this step as necessary to advance through each digit in the entire distance value and edit each digit individually.

The distance value can be cleared to zero at any time by long-pressing the Back key. Once altered or cleared, the original distance value can be restored by pressing either Forward or Back.

## THE EDIT MODE

When your edited value is correct, press Fire. A beep will sound, and the value will be accepted in memory and at this point can no longer be restored by pressing Forward or Back. To exit the editor and return to your submenu, press Forward or Back.

**Note: If you exit out of the editor without pressing Fire, your edit will not be saved!**

## DOWNLOADING DATA

The Impulse back panel contains a 4-pin serial connector that allows you to download data to a data collector or notebook computer. The accessories needed for remote operations—cables and a data collector—are available from LTI.

Current data collection software packages for the laser include LTI Map, LTI Face Profiler, and Traverse PC Handheld. Available interfaces for GPS mapping systems include Ashtech Reliance, Trimble Pathfinder, and CMT MC-GPS. Please call us for more information on application software.

### *Downloading*

Measurement data can be downloaded using one of three methods: manual download, automatic download, or query.

The data you wish to download must appear in the display window for either instrument invoked or requested data to be valid. If there are no measurements available to download, the instrument downloads null or zero values.

When a measurement is available, the DNLD indicator displays. In that case, you can download by query or manually by short-pressing Forward. A successful download will be noted by a flashing DNLD indicator, then it will disappear. Even if the DNLD indicator is not showing, downloading is always available by long-pressing the Forward button.

The automatic download mode, when activated, downloads values automatically every time the instrument takes a measurement.



## DOWNLOADING DATA

The download messages can take one of two formats: the Impulse native format or, for those who already have download software designed for the Criterion family of instruments, the Criterion 400 format. The Impulse native format comes from LTI's Impulse series of instruments, and is denoted by IP200 in the Impulse 200XL, and IP100 in the Impulse 100XL.

Distance measurements will be downloaded either in feet or meters. If you have selected yards for your distance units, they will be converted to feet for download purposes since most software isn't compatible with yards as a measurement unit.

### *The DNLD Option*

You set the automatic download mode and change the download format with the SYS - DNLD option. Here is the procedure:

1. Use Forward and Back as needed to display the SYS indicator.
2. Press Fire to select the SYS option.
3. Press Forward repeatedly until the DNLD indicator appears in the lower, right corner of the display window, and On or OFF shows in the numeric display area. The AUTO indicator will also show, but will be blinking.
4. Pressing Fire toggles between turning the auto download feature 'On' and 'OFF.'

## DOWNLOADING DATA

5. Press Forward to select On or OFF. The AUTO indicator disappears and the numeric display area shows the download message format setting (CR400, or IP200 or IP100).
6. Press Fire to toggle between CR400 and IP200/IP100.

**Impulse 200XL:** While CR400 is showing, you have the option of pressing Fire2 to toggle the D or G indicator on and off. (Either D or G will be displayed, depending upon which units of angular measurement you have selected.) With D (or G) on, the azimuth field in the Criterion horizontal vector message will download as 0.00; with D (or G) off, it downloads as null. This is to accommodate download software that does not accept null values for azimuth.

**Impulse 100XL:** While CR400 is showing, you have the option of pressing Fire2 to toggle the range units (F or M) and angle indicator (D) on and off. (Either F or M will be displayed, depending upon which range units you have selected.) With F/M and D both off, all fields download as null except for SD. Turning F/M on downloads an SD value in the horizontal distance field, and 0.00 in the inclination field with a valid measurement. Turning both F/M and D on will download an SD value in the horizontal distance field, and will download 0.00 in both the inclination and azimuth fields. This is to accommodate download software that does not accept null values.

7. Press Back twice to back out to the main display and save the DNLD settings.

The DNLD options are set and will come up the next time you power on the instrument.

## DOWNLOADING DATA

### *Optional Remote Trigger*

It is possible to remotely trigger the Impulse and take a measurement by using an external computer, data collector, or switch closure. Remote triggering is accomplished by providing an open collector closure to ground or an active low TTL or RS232 level signal to the 'trigger' pin on the serial connector. This option requires a special order download cable that connects the remote trigger signal from the Impulse to the 'RTS' output signal of a computer's serial port.

When using a serial cable with a remote trigger connection, care must be taken in controlling the state of the RTS signal from the host computer. Often times the default state of the RTS signal will be low, causing an inadvertent trigger of the Impulse. Since the remote trigger signal is treated the same as a keypress on the Impulse keypad, holding the signal low is identical to holding down a function key, which prevents a response to any additional keys that are pressed.

With the red dot sighting scope, if the red dot is off when the remote trigger is activated, it is not necessary to trigger twice to first turn on the dot and then take a measurement. The remote trigger will turn on the scope aiming dot and take a measurement all at once.

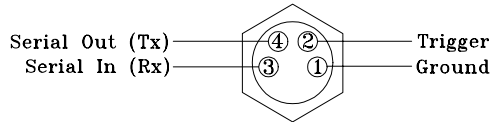
## DOWNLOADING DATA

### Serial Interface Specifications

The Impulse serial interface uses RS-232 +/-12V signal levels and data format. The format parameters are set to:

- 4800 bps (CR400 format)
- 9600 bps (IP200 and IP100 format)
- 1 start bit
- 8 data bits
- 1 stop bit
- no parity

Pin-out assignments for the serial port are:



### Impulse (IP200 or IP100) Format

#### Queries

The data you wish to download must appear in the display window. If it does not, scroll to the appropriate option. An Impulse format query message from the download device to the Impulse is in this general format:

**$\$datatype$  <CR>**

where:

$datatype$  identifies the type of data you are requesting. Legal values:

- $\$ID$  = Instrument version number
- $\$BM$  = Basic measurements
- $\$HT$  = Height data (200XL only)
- $\$RD$  = Range difference
- $\$RC$  = Range cumulative

**<CR>**

is a carriage return character.

An invalid query will return error message:

**$\$ERR$**

## DOWNLOADING DATA

### Download Messages

Data messages downloaded in IP200/IP100 format are in this general form:

```
$datatype, value,... dunits, aunits *csum  
<CR>
```

where:

*datatype* identifies the data type. Legal values:

\$ID = Instrument version number  
\$BM = Basic measurements  
\$HT = Height data (200XL only)  
\$RD = Range difference  
\$RC = Range cumulative

*value,...*

are the values associated with the data type, separated by commas. The last value in the list is followed by a comma.

The maximum value for any measurement is 999999; the minimum is -99999. Since the instrument cannot measure more than a few thousand meters or yards, the maximum possible values can only be obtained through cumulative distance measurements or by using a large offset.

*dunits*

specifies the units for distance measurements. Legal values:

F=feet  
M=meters

*aunits*

specifies the units for angular measurements. Legal values:

D=degrees  
G=gradients (200XL only)

## DOWNLOADING DATA

### *\*csum*

is an asterisk followed by a hexadecimal checksum. The checksum is the result of a complemented, no-carry, binary addition of all the characters between the dollar sign and the asterisk.

### <CR>

is a carriage return.

### **CR400 Format**

### **NMEA Compliance**

The Criterion 400 data format follows the guidelines of the NMEA 0183 Standard for Interfacing Marine Electronic Navigational Devices, Revision 2.0.

NMEA 0183 provides for both standard and proprietary data formats. Since none of the standard formats are useful for the data

transferred from the Impulse, special proprietary formats are used. Rules described in the NMEA standard governing general message structure, leading and trailing characters, numeric values, delimiting character, checksums, maximum line length, data rate, and bit format are followed exactly.

As required by NMEA 0183, the CR400-format does not respond to unrecognized header formats, malformed messages, or messages with invalid checksums.

### **Queries**

The data you wish to download must appear in the display window. If it does not, scroll to the appropriate option. A CR400-format query message from the download device to the Impulse is in this general format:

## DOWNLOADING DATA

**\$PLTIT,RQ,datatype <CR><LF>**

where:

**\$PLTIT,RQ,**

identifies this as a CR400-format request message.

*datatype* identifies the type of data you are requesting. Legal values:

- ID = Instrument version number
- HV = Horizontal vector
- HT = Height data (200XL only)
- RD = Range difference
- RC = Range cumulative

**<CR><LF>**

is a carriage return/line feed combination.

If the optional NMEA query checksum is used, the Impulse will ignore it.

## Download Messages

In CR400 format, the Impulse downloads data messages in this general form:

**\$PLTIT, datatype , value, units, ... \* csum**

where:

**\$PLTIT,**

is the Criterion message identifier.

*datatype,*

is the data type. Legal values:

- ID = Instrument version number
- HV = Horizontal vector
- HT = Height data (200 XL only)
- RD = Range difference
- RC = Range cumulative

## DOWNLOADING DATA

*value, units, ...*

specifies a measurement value and the units in which that value is expressed. This pattern repeats as often as needed to specify the downloaded values, except that the final units designator is not followed by a comma.

The maximum value for any measurement is 999999; the minimum is -999999. Since the instrument cannot measure more than a few thousand meters or yards, the maximum possible values can only be obtained through cumulative distance measurements or by using a large offset.

Each unit designator is a one-character indicator. Legal values are:

F=feet

M=meters

D=degrees

G=gradients (200 XL only)

*\*csum*

consists of an asterisk followed by a two-digit hexadecimal checksum. The checksum is calculated by XORing the eight binary data bits of each character between the dollar sign and the asterisk.

**<CR><LF>**

is a carriage return/line feed.

An invalid query will not be responded to by the instrument.

*Note:* Historically, the HV data line has been the most commonly used of all Criterion 400 data line types, and hence is the only data line type supplied in the Impulse.



## DOWNLOADING DATA

### *Specific Message Formats*

The table on the following page shows example message formats for each data type, in CR400, IP200, and IP100 formats.

Again, remember that during downloading, measurements taken in yards will be converted to feet for software compatibility purposes, making **F** the range units designator in the data line.

The examples in the table use these values and units:

HD: 23 meters (200XL only)  
SD: 28 meters  
VD: 15.9 meters (200XL only)  
INC: 34.8 degrees (200XL only)  
HT: 37.2 meters (200XL only)  
RD: 41 meters (set point)  
-2 meters (difference)  
RC: 208 meters (HD total-200XL only)  
244 meters (SD total)

## DOWNLOADING DATA

### Version ID

Impulse Model	IP200-format Message	CR400-format Message
<b>200XL</b>	Query: \$ID Response/download: \$ID,IP200,2.50*2A	Query: \$PLTIT,RQ,ID Response/download: \$PLTIT,ID,IP200,2.50*46

Impulse Model	IP100-format Message	CR400-format Message
<b>100XL</b>	Query: \$ID Response/download: \$ID,IP100,2.50*2B	Query: \$PLTIT,RQ,ID Response/download: \$PLTIT,ID,IP100,2.50*45

## DOWNLOADING DATA

### Basic Measurements and Horizontal Vector

Impulse Model	IP200-format Message	CR400-format Message
<b>200XL</b>	Query: \$BM  Response/download: \$BM,28,34.8, ,23,15.9,M,D*42 <i>(Note: empty field is azimuth value)</i>  Bad reading or null data: \$BM, ,34.8 , , ,M,D*DE \$BM, , , , ,M,D*AB	Query: \$PLTIT,RQ,HV  Response/download: \$PLTIT,HV,23,M, , ,34.8,D,28,M*39 <i>(Note: empty field is azimuth value)</i>  Response/download with dummy azimuth field: \$PLTIT,HV,23,M,0.00,D,34.8,D,28,M*63  Bad reading or null data: \$PLTIT,HV, , , ,34.8,D, ,*32 \$PLTIT,HV, , , , , , ,*67

## DOWNLOADING DATA

Impulse Model	IP100-format Message	CR400-format Message
<b>100XL</b>	Query: \$BM  Response/download: \$BM,28, , , , ,M,D*41  Bad reading or null data: \$BM, , , , ,M,D*AB	Query: \$PLTIT,RQ,HV  Response/download: \$PLTIT,HV, , , , , ,28,M*20  Bad reading or null data: \$PLTIT,HV, , , , , , ,*67  Response/download with dummy HD field: \$PLTIT,HV,28,F, , , ,0.00,D,28,M*36  Response/download with dummy HD & azimuth fields: \$PLTIT,HV,28,M,0.00,D,0.00,D,28,M*67  Bad reading or null data with dummy HD & azimuth fields: \$PLTIT,HV, , , ,0.00,D, , , ,*3D

## DOWNLOADING DATA

### Range Difference

Impulse Model	IP200-format Message	CR400-format Message
<b>200XL</b>	Query: \$RD Response/download: \$RD,41,-2,M*D4 Bad reading or null data: \$RD,41, ,M*33 \$RD, , ,*E5	Query: \$PLTIT,RQ,RD Response/Download: \$PLTIT,RD,41,M,-2,M*75 Data unavailable: \$PLTIT,RD, , , ,*6F

Impulse Model	IP100-format Message	CR400-format Message
<b>100XL</b>	Query: \$RD Response/download: \$RD,41,-2,M*D4 Target measurement only: \$RD,41, ,M*33 Bad reading or null data: \$RD, , ,*E5	Query: \$PLTIT,RQ,RD Response/Download: \$PLTIT,RD,41,M,-2,M*75 Target measurement only: \$PLTIT,RD,41,M, ,*27 Bad reading or null data: \$PLTIT,RD, , , ,*6F

## DOWNLOADING DATA

### Range Cumulative

Impulse Model	IP200-format Message	CR400-format Message
<b>200XL</b>	Query: \$RC  Response/download: \$RC,208,244,M*65  Data cleared to zero: \$RC,0.00,0.00,M*1D	Query: \$PLTIT,RQ,RC  Response/download: \$PLTIT,RC,208,M,244,M*60  Data cleared to zero: \$PLTIT,RC,0.00,0.00,M*09

Impulse Model	IP100-format Message	CR400-format Message
<b>100XL</b>	Query: \$RC  Response/download: \$RC, ,244,M*FF Data cleared to zero: \$RC, ,0.00,M*DB	Query: \$PLTIT,RQ,RC  Response/download: \$PLTIT,RC, , ,244,M*17  Data cleared to zero: \$PLTIT,RC, , ,0.00,M*3B

## DOWNLOADING DATA

### Height

Impulse Model	IP200-format Message	CR400-format Message
<b>200XL</b>	Query: \$HT Response/download: \$HT,37.2,M*F4 Data unavailable: \$HT, ,*0B	Query: \$PLTIT,RQ,HT Response/download: \$PLTIT,HT,37.2,M*30 Data unavailable: \$PLTIT,HT, ,*65

## USING A TRIPOD OR MONOPOD

Laser Technology, Inc. can supply accessories that allow you to mount the Impulse on a tripod or monopod. (Your Impulse also has a mounting block attached to the bottom of the instrument.)

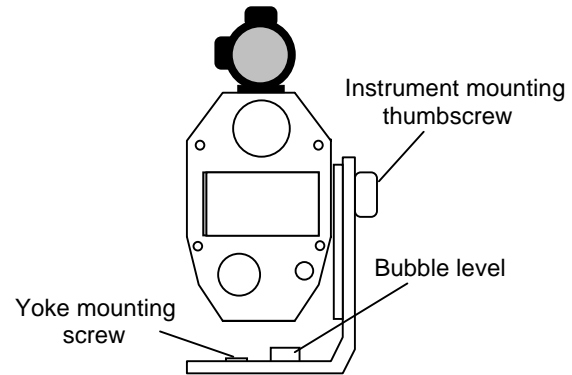
The accessories are:

- yoke and mounting bracket
- compass and compass mount

### *Yoke*

The yoke features an open design to allow you to mount the Impulse to the pod without interfering with the operation of the buttons.

To help you level the instrument, the yoke has a bubble level. To achieve level, make sure the bubble is centered in the indicator circle.





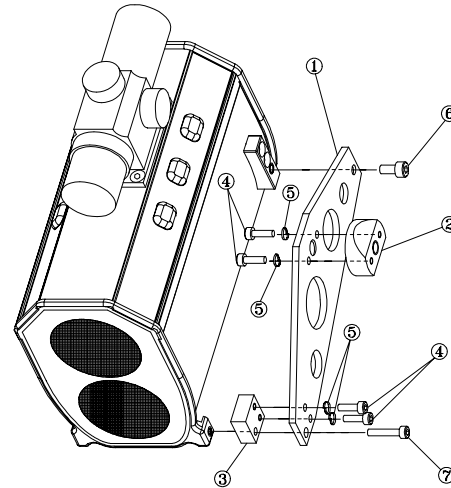
## USING A TRIPOD OR MONOPOD

### *Yoke Mount*

The yoke mounting bracket attaches to the Impulse on the side opposite the hand strap. Simply screw it into place.

If you are switching the hand strap from one side to another, you will also need to reconfigure the yoke mounting bracket for use on the opposite side.

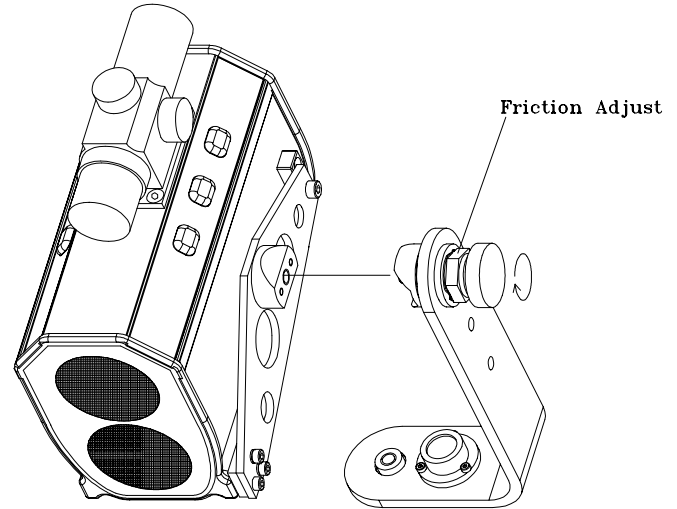
PART #	PART NAME	QUANTITY
1	Yoke Plate	1
2	Shaft Adapter	1
3	Yoke Mount Block	1
4	Screw, M3x10	4
5	Split Ring Lock Washer	4
6	Screw, M4x8	1
7	Screw, M3x16	1



## USING A TRIPOD OR MONOPOD

To attach the instrument to a tripod or monopod, first attach the mounting bracket to the side of the instrument, then attach the yoke to the pod. Align the thumbscrew with the middle hole in the attachment at the top of the bracket, and tighten the thumbscrew.

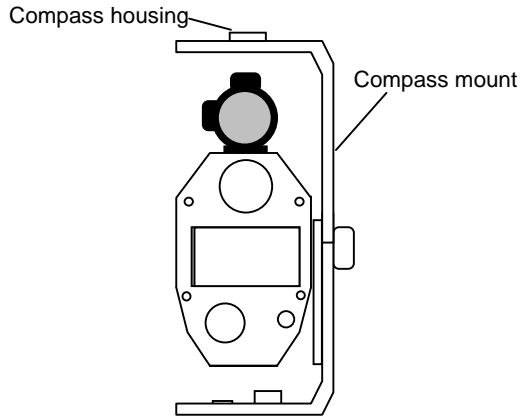
To adjust the friction, tighten the thumbscrew into the yoke mount, and adjust the nut as needed.



## USING A TRIPOD OR MONOPOD

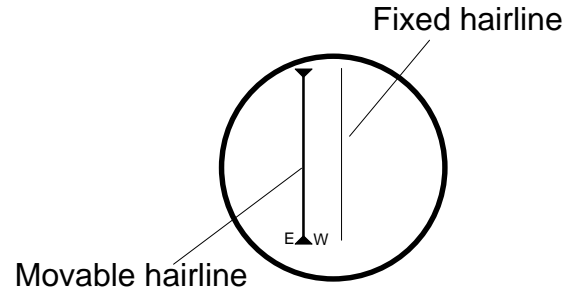
### Compass Mount

The compass mount attaches to the yoke and extends over the top of the mounted instrument. On top of the mount is a housing that fits over the compass and holds it in place.



### Compass

The compass features two hairlines, one of which is movable. The fixed hairline is for reading the magnetic bearing; the movable hairline is for reading a bearing corrected for declination.



## USING A TRIPOD OR MONOPOD

You must set the movable hairline to account for the declination in your area. If you are using a Suunto KB-14D compass, set the declination crosshair by moving it east or west of the magnetic crosshair by half the number of degrees of the declination value. For example, if the declination in your area is  $10^{\circ}\text{E}$ , set the movable hairline so it is 5 degrees to the left of the fixed hairline. If the declination is  $10^{\circ}\text{W}$ , set the movable hairline 5 degrees to the right of the fixed hairline. Test this on a target and take readings with each line to ensure that you get the full value between the two azimuths. If you are using a different compass, please refer to the manufacturer's instructions for setting declination.

### *Note for Criterion Users*

If you are using a Criterion staff, subtract 5 inches (0.42 feet) from the number silk-screened at the bottom of the staff.

## CARE AND MAINTENANCE

### ***Operating Temperature***

The instrument components are rated for a temperature range of -30° C (-22° F) to 60° C (140° F). Do not expose the instrument to temperatures outside that range.

### ***Moisture and Dust Protection***

The instrument is sealed to provide protection from normally expected field conditions. It is protected from dust and from rain, and features temporary submersion resistance.

### ***Shock Protection***

The Impulse is a precision instrument and should be handled with care. It will withstand a reasonable drop shock. If you drop the instrument, however, check the scope and tilt alignment (200XL only) before using the instrument for measurement.

### ***Cleaning and Storage***

Clean the instrument after each use, before returning it to its case. Check for all the following items:

- *Excess moisture.* Towel off excess moisture, and air dry the instrument at room temperature.
- *Exterior dirt.* Wipe exterior surfaces clean. Use isopropanol to remove dirt and fingerprints from the scope exterior.
- *Dirty lenses.* Use a lens brush to remove surface dust and loose particles from the front panel lenses. Clean each lens by moistening it with a lens cleaning solution and wiping it with a clean cloth or lens tissue. If paint spatters on a lens, let it dry and carefully pick off the dried paint with your fingernail.
- *Batteries.* If you won't be using the instrument again soon, remove the batteries before storing it.

## CARE AND MAINTENANCE

### *Caring for the Scope*

Do not attempt to lubricate the scope. It is sealed from within using O rings and special compounds. All seals are permanent and require no maintenance.

Clean the lenses with lens cleaning solution and a soft, dry cloth or lens tissue. Use a lens brush to remove surface dust and loose particles. Remove paint splatters by letting them dry and carefully picking them off with your fingernails.

The windage and elevation adjustment screws are permanently lubricated; do not attempt to lubricate them. Keep the turret caps on except when you are aligning the scope.

### *Checking the Display Screen*

It is a good idea to periodically check the display screen to make certain that all display segments still show up. You can do that by powering on as usual, but instead of releasing the Fire button immediately, hold it down. For as long as you hold the button, all segments of the display should show, allowing you to identify any that no longer display. See *Instrument Options and Indicators* for a complete drawing of all display indicators.

While you are holding the fire button, you can also display the Impulse instrument version number by pressing any other button.

## CARE AND MAINTENANCE

### *Checking the Batteries*

You can check the battery voltage level by scrolling to the SYS - BATT option. The numeric display area shows the current voltage reading of the batteries.

Should the batteries run low during measurement operations, the BATT indicator blinks. If you continue operations, and the batteries run down further, a Lob message displays on the screen.

If you fail to change the batteries at that point, the keys will lock out.

### *Realigning the Scope*

The scope may become misaligned by a heavy blow to the instrument. Periodically follow the procedure in the table below to verify that the laser beam is hitting its target and to correct it, if necessary. The point of the procedure is to align the laser's point of impact with the scope's aiming dot or crosshair, using sound to indicate when the scope is on target.

To align the scope properly, you need:

- *A flat-head screwdriver* to turn the scope adjustment screws.
- *A target* at which to aim the instrument.
- *A highly stable base* for the instrument. A tripod is recommended.

## CARE AND MAINTENANCE

The target that you choose is critical to the success of the alignment operation. It should be a reflecting target large enough to be seen clearly from a distance but small enough to be a highly accurate indicator of where the laser beam is hitting. A bicycle reflector at least three inches in diameter is recommended.

The target should be positioned at least 90 meters (100 yards) from the instrument and isolated from other targets. Ideally, the target, when viewed from the instrument's position, should be silhouetted against the sky, with no other targets in the immediate vicinity. (That's so you can be certain of the general area the laser is hitting.)

Finally, make certain you know the scope's definition of which way is up before making large adjustments.

Action	Notes/Explanation
Position the target.	You need an isolated, reflecting target at least 90 meters away. It should be visible, but should present as small a target area as possible.
Position the instrument.	Use a stable tripod that allows easy movement of the instrument in two planes.
Go to SYS/BORE.	"tt" is displayed.
Aim at the center of the target and hold down the Fire button.	The instrument emits a tone. The frequency varies as you move the instrument.
Slowly pan the Impulse horizontally and vertically. When the tone drops from high to low, note the position of the target relative to the aiming dot.	If the frequency drops off at equal distances from the center of the aiming dot, the instrument needs no adjustment. Otherwise, continue with the next step.
Unscrew and remove the turret caps.	



## CARE AND MAINTENANCE

Adjust elevation and windage until the frequency drops off when the target is at equal distances from the center of the aiming dot.	Each tick mark on an adjustment screw equals one minute of angle (MOA). Adjust carefully. Make sure you're moving the dot or crosshair in the right direction before you try adjusting in large increments.
Check the alignment one last time. Then replace the turret caps and power down the instrument.	

### ***Aligning the Tilt Sensor on the 200XL***

Periodically check, and realign if necessary, the instrument's tilt sensor using the CAL suboption in the SYS menu. The process of "aligning" the sensor involves finding out how far off it is, and recording an offset value that accounts for the discrepancy. The basic idea behind the procedure is simple: you are aligning a target level with the scope and forcing the instrument to measure an inclination angle of zero.

Different methods of tilt calibration offer varying degrees of precision, and you can determine which to use based on the level of accuracy required for your measurements. The first method, the subtractive offset, requires a precision surveying level that helps you position a target precisely level with the Impulse scope. If you do not have such an instrument, use one of the additive offset methods, such as the "desktop" additive offset, which is also the factory calibration method, or the "opposed targets" additive offset procedure, which is described after the desktop method.

## CARE AND MAINTENANCE

Computing the subtractive offset value requires this procedure:

1. If necessary, realign the scope.
2. Make sure the instrument reads degrees and percent slope is turned off.
3. Position the scope so its center is aligned with a previously determined level target.  
*Note:* The scope must be properly aligned for this calibration to be accurate.
4. Take an inclination measurement and note down the value.
5. Return to the SYS - CAL option, and press Fire2 to enter the editor.
6. Edit in the value.

7. Return to the INC option and measure the same target again. The inclination measurement should be 0.00.

To compute the additive offset, follow this procedure:

1. Make sure the instrument reads degrees and percent slope is turned off.
2. Set your power conservation interval to 5 minutes/60 seconds or ALL On.
3. Clear the range offset to zero.
4. Scroll to the SYS option and press Fire.
5. Press Forward until CAL begins blinking in the lower right portion of the display window and the center of the display screen shows dashes.
6. Press Fire2 to display the subtractive offset value.

## CARE AND MAINTENANCE

7. Long-press Back to clear the value, and press Fire to accept the cleared value.
8. Place the instrument on its base on a level desk or table. Align the long edge of the instrument with the edge of the desktop or tabletop.
9. Press Fire. (If the instrument does not begin a series of regularly spaced tones, press Fire again.)

You will have two seconds to stabilize and quiet the instrument before any measurement is taken.

10. Rotate the instrument precisely 180 degrees and press Fire once more. Again, you will have two seconds to stabilize and quiet the instrument before any measurement is taken.

11. Press the Fire button. The instrument computes and displays a tilt offset value. Press Fire to use the computed value.
12. Scroll back to the main display, and scroll to the INC indicator. Take two inclination readings, using the same desktop and rotation procedure used previously. The two readings should be within 0.05 degrees one another.
13. Reset your power conservation interval to that of normal usage.

*Note:* The additive offset procedure can be performed with a higher degree of accuracy by setting up two targets 15 to 30 meters/yards away. The center of each target must be level with the center of the scope lens, and they must be facing each other.

## CARE AND MAINTENANCE

This procedure requires an accurately aligned scope. Follow the same procedure, but instead of placing the instrument on a desk or table, place the instrument on a stable platform at one end of the alignment area, and shoot to the opposite target. These two readings should also be within 0.05 degrees of one another.

## SPECIFICATIONS

Note: these specifications are subject to change.

<b>Weight:</b>	1 kg (2.2 lb.)
<b>Size:</b>	15.2 x 6.4 x 12.7 cm (6 x 2.5 x 5 in)
<b>Max Range:</b>	2200 meters (2400 yards)
<b>Range Resolution:</b>	1 meter/yard
<b>Height Resolution:</b>	0.1 meter (1 foot)
<b>Inclination Limits:</b>	± 180 degrees
<b>Inclination Accuracy:</b>	± 0.1 degree (typical)
<b>Power Supply:</b>	Two AA batteries providing up to 20 hours of use. Do not use “voltage check” cells.