

NEVADA PLAYER

Digital MP4/MP3/WMA/ASF Player



MT822

User Guide

Contents

Introduction	2
Features.....	3
Safety instructions	3
Player description	4
Buttons.....	4
Display.....	5
Battery capacity	5
Music mode	5
Options menu 1	6
Options menu 2	8
Movie mode	9
Voice recording	10
Converting ACT recording files to WAV	11
Recording playback.....	12
Options menu.....	13
TXT file viewer	13
Graphic file viewer	13
FM radio.....	13
System setting.....	14
Encrypt disk function.....	15
USB disk function	17
Convert video file to AMV format.....	17
Troubleshooting.....	19
Specification.....	20

Introduction

Welcome in MP4 users exclusive club. Because Your new MP4 player is quite sophisticated device, please read this manual first to discover all exciting features of it.

MEDIA-TECH Team

Package includes

- Player unit
- USB cable
- Stereo earphones
- Power adaptor
- Software disc
- User manual

Features

- Micro MP4/MP3/WMA player
- FM Radio built-in
- Scanned frequencies: 87.5~108MHz
- Stereo speakers built-in
- Voice recording with sampling frequency: 8~48kHz
- WMA Bit Rate: 32~384Kbps
- 7 equalizer settings
- 7 playing modes
- Picture viewer
- Telephone database
- TXT viewer
- USB disk mode
- Adjustable playing speed
- Average continuous playing: up to 8 hrs
- 65K 128x128 ppi Color LCD display
- Built-in internal memory
- Supported sound & video file formats: MP1, MP2, MP3, WMA, WMF, WMV, ASF, AMV
- Supported picture format: JPG, BMP
- Windows ME/2000/XP compatible
- Power: built-in Li-Ion rechargeable battery
- USB 2.0 interface
- Dimensions: 78x42x17mm
- Weight: 48g

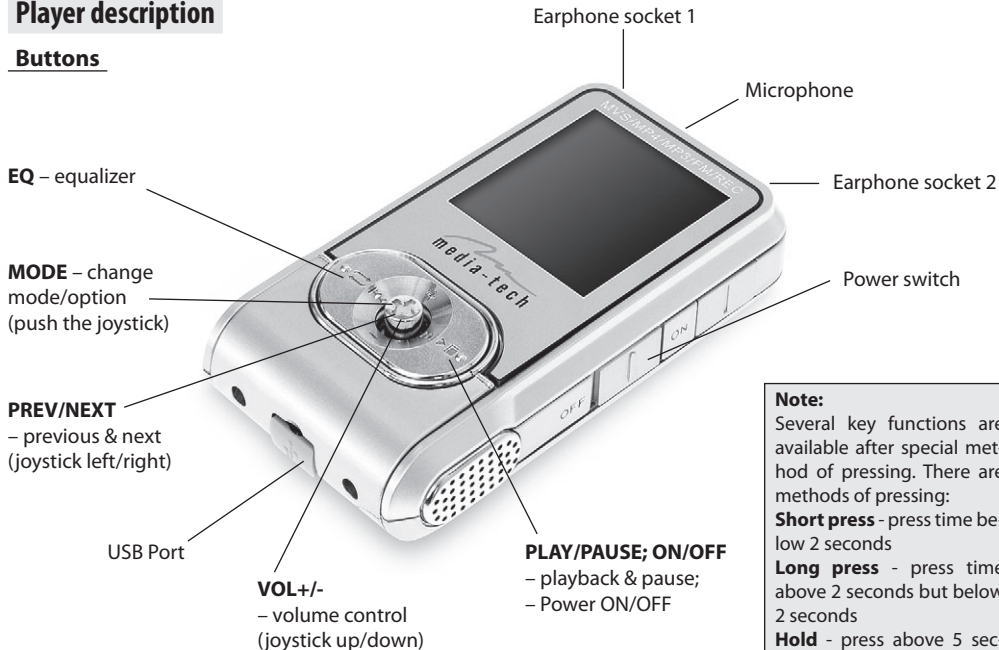
Safety instructions

The manual contains the important safety instructions and information of the device's proper usage. Make sure to read carefully and understand all the instructions to avoid accident.

- Do not expose the device to extreme temperature (above 40C), especially in cars with shutting windows in summer.
- Do not expose to moisture. Do not store in humid or dirty areas.
- Avoid the device falling and bumping strongly. Do not make OLED suffer from violent shake; otherwise, OLED could be damaged or displayed abnormally.
- Choose the suitable volume. Do not turn up the volume of the earphones too high while using it. If you get ringing in your ears stop using the device or turn the volume down.
- Do not disassemble the device yourself and do not wipe the surface of device with alcohol and benzene and thinners.
- Do not using the device in areas with prohibiting electronic devices, such as in plane.
- Do not use the device while driving an automobile or walking in the street, otherwise, an accident may result.

Player description

Buttons



Note:
Several key functions are available after special method of pressing. There are methods of pressing:
Short press - press time below 2 seconds
Long press - press time above 2 seconds but below 2 seconds
Hold - press above 5 seconds

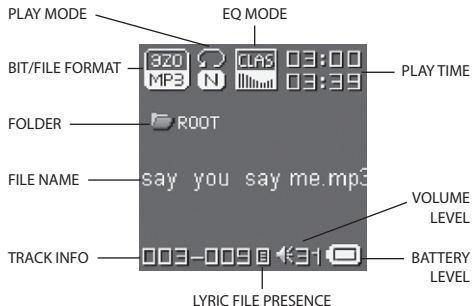
Enable/Disable

Push and hold **PLAY/PAUSE** button to enable or disable MP4 player. Be noted that power switch must be set in **ON** position.





Options, menus and function navigation

To scroll menu or options list use **NEXT/PREV** buttons (bear joystick to left or right direction). Accept choice or move to next level of menu by pushing **MODE** button.

Display



Battery capacity

-  battery is full. Predicted time of playing up to 8 hours. During playing battery level is decreasing.
-  battery is empty. Should be charged immediately. Please connect to power source (USB port or +5V power adaptor).
-  To charge, please turn **ON** the power switch in the device, otherwise device will be not charged.
-  When MP4 player is not in use, please turn it **OFF** by power switch.

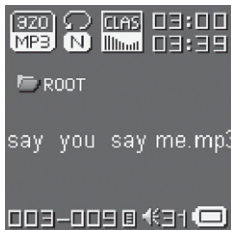
Music mode

In music mode only MP3 and WMA music files can be played back. This mode also supports LRC lyric files which allows to display song lyric simultaneously with music.



Playback

1. Insert earphone plug into the earphone socket
2. Move power switch to **ON** position
3. Press and hold **PLAY/PAUSE** button to turn device **ON**
4. By **PREV/NEXT** buttons choose the music mode and push **MODE** button to enter music mode
5. To choose track (song) use **NEXT** and **PREV** buttons. Press **PLAY/PAUSE** to start playing

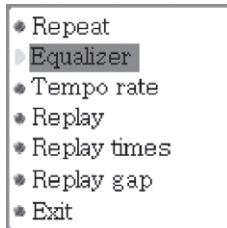


- Press shortly **PLAY/PAUSE** to temporary stop playback (pause). Push this button again to revive playback.
- Press and hold **PLAY/PAUSE** to definitely stop playback (stop).
- Keep pressing **VOL+/VOL-** buttons to increase or decrease volume

- Press shortly **PREV** or **NEXT** to choose previous or next music file
- Press and hold **PREV** or **NEXT** to rewind back or forward rewind actual song.
- Press shortly **MODE** to enter music mode option menu
- Press and hold **MODE** to exit to player main menu
- Press **EQ** to enter equalizer setting menu

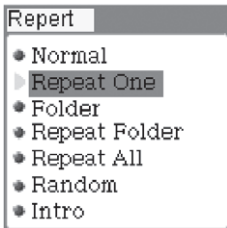
Options menu 1

Press shortly **MODE** to enter music mode option menu



Repeat

In music play menu, the user could enter Repeat interface. Use **PREV/NEXT** buttons to select repeat mode.



Normal – Play all the songs once

Repeat One – Repeat play one song

Folder – Play the selected folder once

Repeat Folder – Repeat all songs

Repeat All – Repeat all songs

Random – Randomly select song to play

Intro – Play the first part of all saved tracks for 10 seconds

Equalizer

Allows to set Your favorite music filter for played back music: NATURAL, ROCK, POP, POPULAR, CLASSIC, SOFT, AZZ i DBB

Tempo rate

Use **NEXT/PREV** buttons to set speed of playback rate. Move puller to positive direction to increase speed and move o negative to decrease speed of playback. "0" value means normal tempo rate.

Note: Tempo rate setting is working only for MP3 files

Replay

A – B replay: set replay tag A and B, use the **NEXT/PREV** buttons to set tag A and tag B.

1. After choosing „**Replay**” option, the character „A” start blinking what is mean that player waiting for setting starting point A.
2. Use **NEXT** to set starting point.
3. „**B**” character is blinking and waiting for setting end point „**B**”.
4. Use **NEXT** to set ending point. After that player will start playing back marked music fragment from point A to point B

Replay time

In music play menu, enter [replay time] by using **NEXT/PREV** button to select the number of replays. Then press **MODE** to confirm.

Replay gap

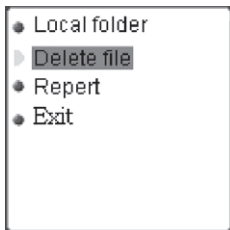
Enter replay gap option. Refer to “replay time” setting and set replay time gap between every replay (time unit is second).

Exit

Exits options menu.

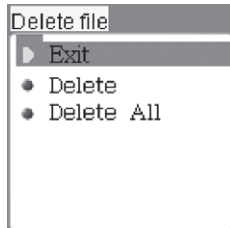
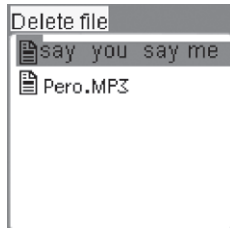
Options menu 2

Press shortly **MODE** when music playback is stopped to enter options menu 2.



Delete files (stop sub-menu)

1. Use **NEXT/PREV** buttons to select delete all, then press **MODE** button briefly to enter deleting interface.
2. Use **NEXT/PREV** buttons to select [YES] or [NO]. Use **MODE** button to delete or exit deleting interface.
3. **Note:**
 - [delete all] will delete all files in the current folder in the current mode(for example, "delete all" will delete all musical files in music mode and will not delete all record files).



- It is simple and easy for deleting interface of FM radio. Just operate the first 3 steps and only delete the preset channels.
- In music, voice and radio mode, users can delete corresponding files and saved channels.

Displaying lyric

Player supports LRC file format which allows to display song lyric simultaneously with music. To use lyric feature, LRC file must have the same name as MP3 song.

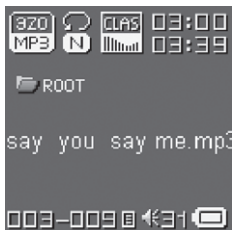
For example:

Music file is: TRACK-4.mp3

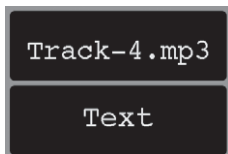
Lyric file should be named: TRACK-4.lrc

The MP3 song containing matched files with lyric are displayed on screen with  icon, close to battery icon:

1. Chose MP3 file with matched LRC file



2. Push **MODE** to switch to lyric mode



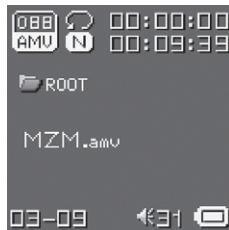
3. Press **MODE** again to back to music mode

Movie mode

Enter **MOVIE** mode from main menu

Playing video

To start playing video, be sure that in player memory an AMV video files exist. Choose his file and press **PLAY/PAUSE** to play it.



During video playing following buttons functions are available:

- Press shortly **PLAY/PAUSE** to temporary stop playback (pause). Push this button again to revive playback again.
- Keep pressing **VOL+/VOL-** buttons to increase or decrease volume
- Press shortly **PREV** or **NEXT** to choose previous or next movie file

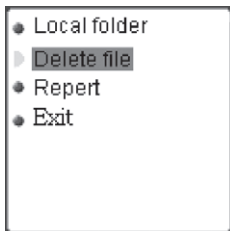
- Press and hold **PREV** or **NEXT** to rewind back or forward rewind actual movie.



- Press and hold **MODE** to exit to player main menu

Movie mode options menu

Press shortly **MODE** button when playback stops to enter options menu.

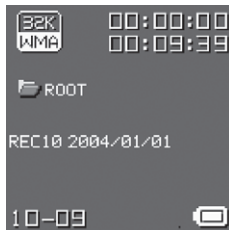


Next steps as described in **Options menu 2** paragraph.

Voice recording

Entering Voice recording mode

1. Enable main menu
2. By **NEXT/PREV** set Record option and confirm by **MODE** button
3. Press **PLAY/PAUSE** shortly to start recording
4. Press **PLAY/PAUSE** shortly to pause recording or hold this button to stop recording.



File with voice recorded is stored in current folder which can be set in Record submenu (push **MODE** button)



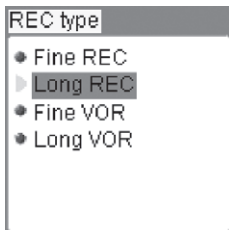
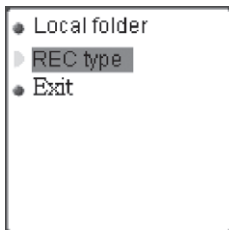
If **SPACE FULL** information is displayed, it means that there is not enough space to store more recordings. Please delete unnecessary files to recover memory space.



If **MENU FULL** information is displayed, it means that maximum capacity of current folder (99 files) has been reached. Please change or create new folder for recordings.

Voice recording type

In stop recording status, press **MODE** button to enter record setting menu. Select **RECORDING TYPE** and press [**MODE**] button to enter.



Fine recoding, WAV format, good voice quality

Long recording, ACT format, fair quality and longer recording time

Fine VOR, WAV format, good voice quality, will pause recording automatically when there is no sound detected

Long VOR, ACT format, fair quality, will pause recording automatically when there is no sound detected

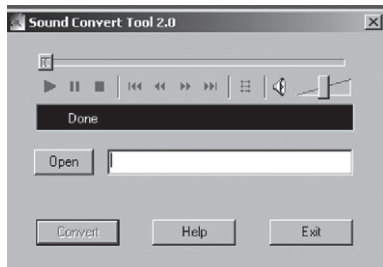
Notice: VOR

1. VOR is that voice controls recording on/off. Recording will stop without voice in order to save memory.
2. For fine recording, please record in little noise background.
3. Please do not talk before recording and start recording in 5-6 seconds.

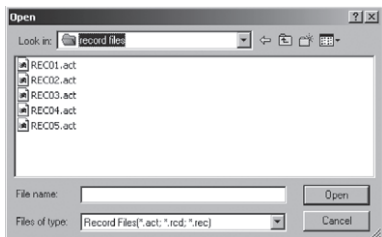
Converting ACT recording files to WAV

The player can convert ACT files to WAV by attached installation tool.

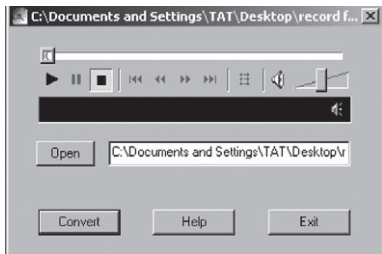
1. Run "**Sound Converter**" and click [**Open**] button: the picture will appear as below:



2. Select ACT files that is converted and click [**Open**]



3. Click [**Convert**] button and begin to convert to WAV format

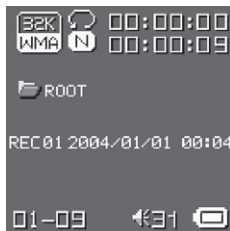


Note: Besides this function, the tool can play WAV and MP3 formats

Recording playback

Enable Voice mode in main menu. Using **NEXT/PREV** choose file and Press **PLAY/PAUSE** to start playback.

During playing following buttons functions are available:



- Press shortly **PLAY/PAUSE** to temporary stop playback (pause). Push this button again to revive playback.
- Press and hold **PLAY/PAUSE** to definitely stop playback (stop).
- Keep pressing **VOL+/VOL-** buttons to increase or decrease volume
- Press shortly **PREV** or **NEXT** to choose previous or next music file

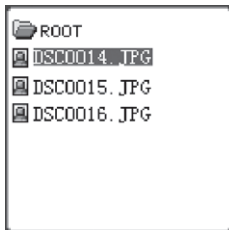
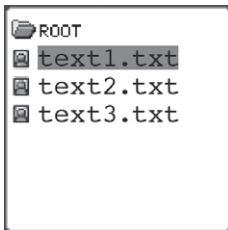
- Press and hold **PREV** or **NEXT** to rewind back or forward rewind actual song.
- Press shortly **MODE** to enter music mode option menu
- Press and hold **MODE** to exit to player main menu

Options menu

Press shortly **MODE** button when playback stops to enter options menu. Next steps as described in **Options menu 1** paragraph.

TXT file viewer

Enter E-book mode from main menu. Use **NEXT/PREV** buttons to choose TXT file to view. Press **PLAY/PAUSE** to display TXT file content.



Graphic file viewer

Enter JPG mode from main menu. Use **NEXT/PREV**

buttons to choose JPG or BMP file to view. Press **PLAY/PAUSE** to display JPG/BMP file content.

FM radio

Choose **FM Radio** from main menu

- Press **MODE** button to enter FM radio menu in FM radio mode



Save – Save currently tuned frequency to a channel

Delete – Delete current preset channel

Delete All – Delete all preset channels

Normal Band – Frequencies from 87MHz- 108MHz

Japan Band – Frequencies from 76MHz - 90MHz

Auto Search – Auto search channel

Exit – Escape from FM radio mode

Auto search

1. Hold **NEXT** or **PREV** button for two seconds to tune frequency upward or downward by 100KHz. When a radio station is located, it will stop automatically. Press **MODE** button briefly to enter radio submenu to save orderly channels. Press again **NEXT** or **PREV** button to resume auto searching and press **NEXT** or **PREV** button shortly to stop the auto searching.
2. Use radio submenu to search channels automatically.

Manual search

Press **PREV** button briefly to search channel upward
Press **NEXT** button briefly to search channel downward

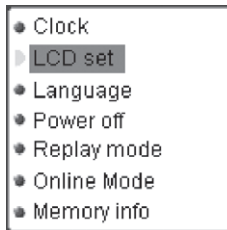
Listen to FM radio

Press **PLAY/PAUSE** button to listen the saved channel. If no channel is saved, you can listen channels by auto or manual searching.

Note: Normal band and Japan band can each store 20 preset channels.

System setting

Enter **System** setting mode from main menu



Clock

1. Use **PREV/NEXT** buttons to change value
2. Use **VOL** button to switch between cells

LCD setting

Available settings for display: **brightness** – setting of display brightness; **darkle** - setting of time to turn off display backlight; **black** - setting of time to turn display off

Language

Allows to change user interface language

Power off setting

Off time mode: To set the self-power off time when the player playback is stopped and no button is pressed. If

“0” is selected, this function will be disabled. The time unit is seconds.

Sleep time mode: To set self-power off time after last key pressed, regardless of whether the player is active or stopped. The time unit is minutes.

Replay mode setting

Two options are available:

Auto replay – end point of A-B replay is set after silence detection (used in language learning)

Manual replay – start and end point of A-B replay is set manually by user

Online mode

Refer to other mode setting.

Some operating systems (Windows 98/98SEP4) cannot support USB disk with two disks icons display in MY COMPUTER. When disk is encrypted, select [**multi driver**], [**normal only**] and [**encrypted only**] in the player via connection to PC.

Memory information

To display the built-in memory size and used memory percentage.

Firmware version

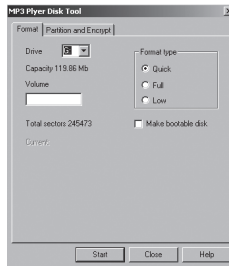
To display the firmware version and date.

Encrypt disk function

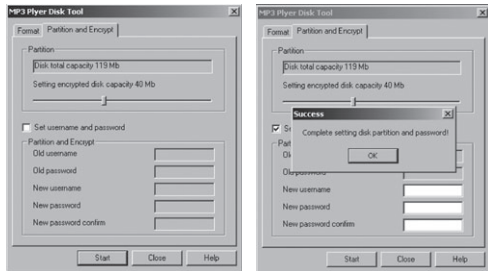
User can use the attached tool to set partitions for USB disk. One is normal disk, other is encrypted disk. (User can see two disk icons in computer. WINDOWS 2K need install SP4, otherwise, user only see one disk icon and selecting [normal only] or [encrypt only] of [online mode] of [system set] [will see other icon]. Encrypted disk would hide all private data, other cannot access data without password.

■ Disk partition steps

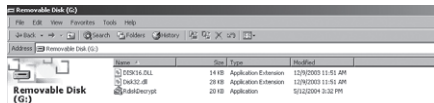
1. Connect the player to PC and run attached procedure: **MP3 PLAYER DISK TOOL**.



- Choose **[partition and encrypt]** option and decide available size of each disk. Set username and password, put username in **[new user]** and new password in **[new password]**, then confirm them. After clicking **[start]** button, dividing disk begins. Click **[OK]** to reboot computer.



- After rebooting computer, users will see two disk icons (SP4 installation is a must). Click the encrypted disk and three files is in the encrypted disk. Two are hidden files and one is executive file. Disk capacity is only 300K.



- Run executive file: RDISK DECRYPT.EXE, put username and password in dialog window. If correct, user can access disk.



Note:

- ▲ Data in encrypted disk cannot be read by the player.
- ▲ It is necessary for access encrypted disk to input username and password when connecting to computer.
- ▲ Setting partitions will erase data, please backup data. Combination disks would also erase data.
- ▲ Please do not lose username and password. Otherwise, you cannot access encrypted disk. You can combine disks to cancel encrypted disk at risk of damaging data in encrypted one.

USB disk function



USB display mode

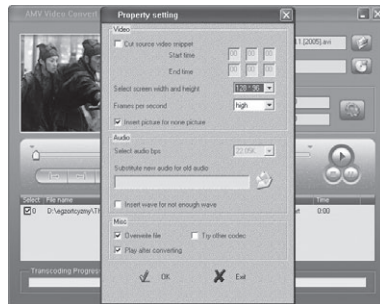
- The player can be used as a large mobile storage device. For Windows 2000, Mac OS 10.3 or Linux Redhat 8.0 pro, no driver is required. For Windows 98, driver is required.
- The player supports USB bus-powered and began to charge up when connecting to PC. In suspending mode, press [MODE] button briefly to escape from USB mode, then re-select the mode you want to go.
- The player supports Suspend mode and user can create 99 files in one folder.
- When connected to a computer, the OLED will indicate three different modes: (suspending mode, data downloading , data uploading).



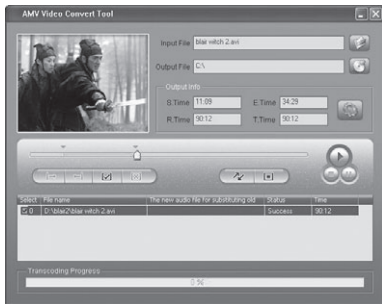
Convert video file to AMV format

This device supports only AMV format for video files. To watch other video format files such as AVI, MPG, MOV, WMV etc. you have to use a converting application which is delivered on driver disc together with player.

1. Run “**AMV Convert Tool**”, and click  button to choose the path for file need to convert, then.
2. Click  button to choose the path for destination file.
3. Mark file which will be converted and click “**Configure**” button. Change screen size to 128*96 ppi and movie FPS quality.



4. Click  button to start conversion



5. After conversion finished, the converted file will be played back.

Troubleshooting

If the player couldn't play normally, please use trouble shooting guide to help you.

Symptom	
The player cannot be turned on	Please check the battery capacity. Please check if the device's procedure is damaged.
The player crashes	Press RESET button to start the player.
The player cannot work	Please check the battery capacity. Please check if HOLD mode is set. Please check volume is set to "0" and make sure that earphones are connected properly and clean. Corrupted music data will make noise in some extent even be played abnormally; make sure the files are full. Please choose FAT file system in dialogue box when formatting disk.
The player cannot upload /download files; no disk icon in computer	Please check USB cable is correctly connected. Please re-install properly driver.
The player cannot record	Please check if memory is sufficient. Please check the battery capacity.
Strange characters are displayed on screen	Please check if the correct language is selected.

If you encounter other difficulties in warranty, please contact our company.

Specification

Item	Specification
Dimensions	78x42x17mm (W*H*D)
Weight	48g
Display	OLED 128x64 65K colors
Interface	USB2.0
File formats supported	Music&Video: MP1, MP2, MP3, WMA, WMV, ASF, WAV, AMV, JPG, BMP, Record: ACT, WAV
FM frequency	76MHz–96MHz/87MHz–108MHz
S/N rate	85dB
The max output power	(L) 10mW+(R) 10mW (320hm)
Built-in memory	128MB/256MB
Built-in speakers	RMS 0,3W
Power	3.7V lithium battery built-in
Time of working on battery (without recharging)	Play time: up to 8h, Record time: up to 8h, Radio FM listening time: up to 8h
Operating temperature	-5°C ~ 40°C
Operating System	WINSE/ME/2K/XP, Mac OS 10.x, Linux 2.4.2, (WIN98 needs the driver)
Accessories	User's manual, earphone, power adaptor, USB cable, driver CD

Specification and appearance is subject to change and improvement without prior notice.