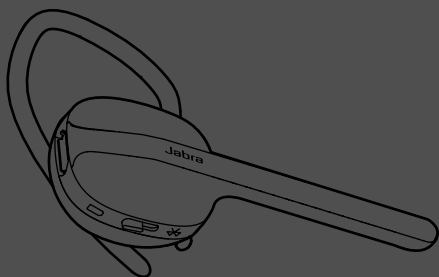


Jabra[®]
YOU'RE ON

JABRA STYLE



User Manual

jabra.com/style

CONTENTS

1. WELCOME	3
2. HEADSET OVERVIEW	4
3. HOW TO WEAR.....	5
3.1 CHANGE EARGELS	
4. HOW TO CHARGE THE BATTERY	6
5. HOW TO CONNECT	7
5.1 CONNECT WITH A BLUETOOTH DEVICE	
5.2 CONNECT WITH AN NFC DEVICE	
6. HOW TO USE	8
6.1 MULTIPLE CALL HANDLING	
6.2 LIST OF VOICE GUIDANCE	
7. SOFTWARE	11
7.1 JABRA ASSIST	
8. SUPPORT	12
8.1 FAQ	
8.2 HOW TO CARE FOR YOUR HEADSET	
9. TECHNICAL SPECIFICATIONS	14

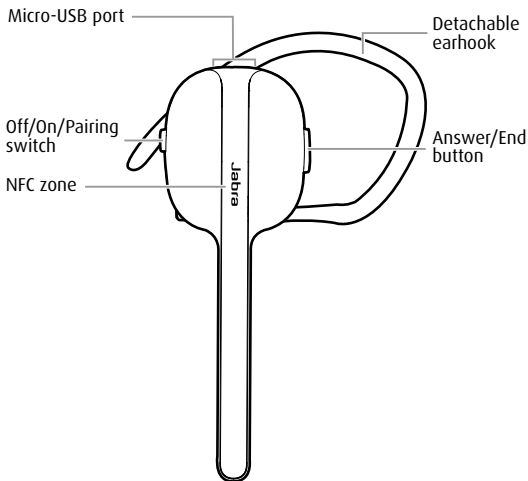
1. WELCOME

Thank you for using the Jabra Style. We hope you will enjoy it!

JABRA STYLE FEATURES

- Voice guidance
- Battery and pairing status display
- HD Voice
- Long talk time - Up to 6 hours
- NFC for easy pairing
- Power Nap feature
- Wireless freedom - Up to 10m/33ft

2. HEADSET OVERVIEW



USB cable



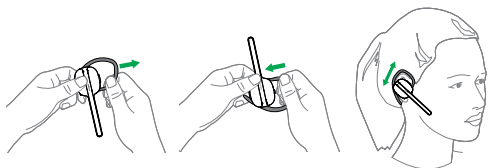
Eargel

NOTE: All accessories are also available on jabra.com.

3. HOW TO WEAR

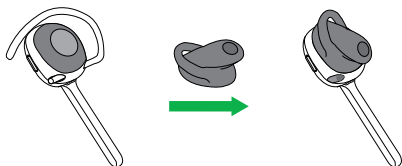
The headset can be worn on the left or right ear.
To switch ear:

1. Remove the earhook.
2. Flip the headset and insert the earhook.
3. Adjust the height of the earhook up or down for best fit.



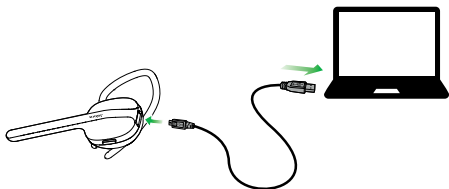
3.1 CHANGE EARGELS

Slip a fingernail underneath the eargel to take it off. Get the perfect fit by changing the eargels.



4. HOW TO CHARGE THE BATTERY

Plug the headset into any available USB port on your PC using the USB cable.



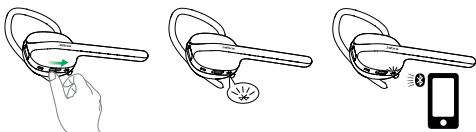
NOTE: For safety reasons, it is recommended not to use the headset while it is charging.

It takes approx. 2 hours to fully charge the battery.

5. HOW TO CONNECT

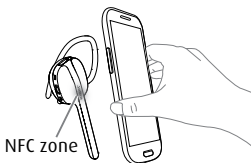
5.1 CONNECT WITH A BLUETOOTH DEVICE

1. Hold the **Off/On/Pairing** switch in the Pairing position for 3 seconds.
2. Pairing mode will be announced in the headset, and the light will flash blue.
3. Follow the voice-guided pairing instructions to pair to your Bluetooth device.

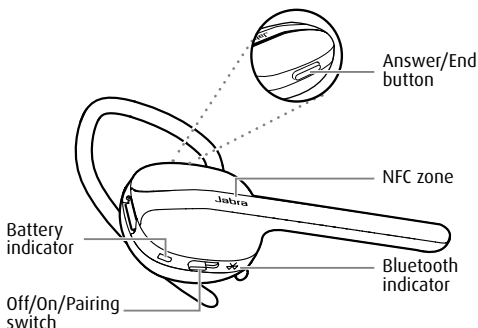


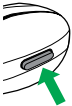
5.2 CONNECT WITH AN NFC DEVICE

1. Turn the headset on (set the **Off/On/Pairing** switch to the On position).
2. Hold an NFC device against the **NFC zone** of the headset (the Jabra logo).



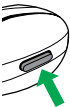
6. HOW TO USE



	FUNCTION	ACTION
	Answer call	Tap the Answer/End button
	End call	Tap the Answer/End button
	Activate voice dialing (phone dependent)	Press and hold (2 secs) the Answer/End button when not on a call
	Reject call	Double-tap the Answer/End button
	Redial last number	Double-tap the Answer/End button when not on a call
	Adjust speaker volume	The volume adjusts intelligently depending on the surrounding environment

6.1 MULTIPLE CALL HANDLING

The headset can accept and handle multiple calls simultaneously.

	FUNCTION	ACTION
	End current call and answer incoming call	Tap the Answer/End button
	Switch between held call and active call	Press and hold (2 secs) the Answer/End button
	Put current call on hold and answer incoming call	Press and hold (2 secs) the Answer/End button
	Reject incoming call	Double-tap the Answer/End button

6.2 LIST OF VOICE GUIDANCE

CLICK TO LISTEN	WHAT YOU HEAR
	Connected
	Battery low
	Redialling
	Disconnected
	To connect your headset, go to the Bluetooth menu on your phone and select it from the list

7. SOFTWARE

7.1 JABRA ASSIST

Jabra Assist is a smartphone app that enables GPS tracking of the headset, pairing assistance, and headset battery status.

Download the latest version

- Android download - Google Play
- iOS download - App Store

8. SUPPORT

8.1 FAQ

View the comprehensive FAQ on Jabra.com/style

Q Why do I hear crackling noises?

A Bluetooth is a radio technology that is sensitive to objects between the headset and the connected device. Ensure the headset and the connected device are within range (up to 10 meters or 33 feet).

Q What is the range of the headset?

A The Jabra Style supports the following maximum ranges: 10m/33ft.

Q Why do I not hear anything?

A You might need to increase the speaker volume, or ensure that the headset is connected to a device.

Q I am having Bluetooth connection problems

A Check your mobile device's Bluetooth menu and delete/forget the headset. Re-connect the headset to your Bluetooth device following the Bluetooth connection instructions.

8.2 HOW TO CARE FOR YOUR HEADSET

- Always store the headset with the power off and safely protected.
- Avoid storage at extreme temperatures (above 35°C/95°F or below -20°C/-4°F). This can shorten battery life and may affect headset operation.
- Do not expose the headset to rain or other liquids.

9. TECHNICAL SPECIFICATIONS

JABRA STYLE HEADSET	SPECIFICATION
Weight:	10g
Dimensions:	H 66.9 mm x W 24.1 mm x D 16.4 mm
Microphones:	Omni-directional microphone
Speaker:	Dynamic speaker
Operating range:	10 m (33 ft)
Bluetooth version:	4.0
Paired devices:	Up to 8, connected to two at the same time (MultiUse™)
Supported Bluetooth profiles:	A2DP(v1.2), Hands Free Profile (v1.6), Headset profile(v1.2)
Talk time:	Up to 6 hours
Standby time:	Up to 7 days
Operating temperature:	-10°C to 55°C (14°F to 131°F)
Storage temperature:	-20° C to 35° C (-4 F to 95 F)
Pairing passkey or PIN:	0000

Jabra[®]
YOU'RE ON

A BRAND BY

GN Netcom

© 2013 GN Netcom A/S (North America: GN Netcom US, Inc.). All rights reserved. Jabra[®] is a registered trademark of GN Netcom A/S. All other trademarks included herein are the property of their respective owners. The Bluetooth[®] word mark and logos are owned by the Bluetooth SIG, Inc. and any use of such marks by GN Netcom A/S is under license. (Design and specifications subject to change without notice).

MADE IN CHINA
MODEL: OTE14



www.jabra.com

REV B