

BKK 2144

Juice Extractor
User Guide

BEKO

Please read this manual first!

Dear Customers!

We hope that your product which has been manufactured in state-of-the-art facilities and passed through strict quality control procedures will give you the best results.

For this, read through this manual carefully before using your product and keep it for future reference.

This User Manual will help you use your appliance in a fast and safe way.

- Please read the User Manual before installing and starting your appliance.
- Particularly follow the instructions related to safety.
- Keep this User Manual within easy reach as you may also need it in the future.
- Also, please read all additional documents supplied with this appliance.

Please note that this User Manual may be applicable for several other models. Differences between models will be identified in the manual.



This product has been produced in environmentally friendly, state-of-the-art facilities.



CONTENTS

1 Safety Warnings	2
2 Technical aspects of your appliance	3
3 Operation of appliance	4-5
4 Cleaning and care	6
5 Customer services	7

1 Safety Warnings

Read these instructions for use carefully before using the appliance and save them for future reference:

1. Check if the voltage indicated on the rating plate of the appliance corresponds to the local voltage before you connect the appliance.
2. If the electric cable, plug or other components are damaged, do not use the appliance and refer to the authorised service center for control
3. If the main cord is damaged, it must be replaced by designated service center or similarly qualified persons in order to avoid a hazard.
4. This appliance is intended for household use only.
5. Keep the appliance out of reach of children. Special attention is necessary if child stand by your side.
6. Make sure that the appliance is unplugged before and removal/installation, cleaning or maintenance procedure.
7. Never use accessories or parts made by other manufacturer or that have not been specifically recommended, your guarantee will become invalid if you use such parts or accessories.
8. Place the appliance on an even surface before use; do not place it on or near hot surfaces such as electric burners.
9. Check the filter every time you use the appliance. Do not use the appliance whenever you see a crack or damage and take it to the

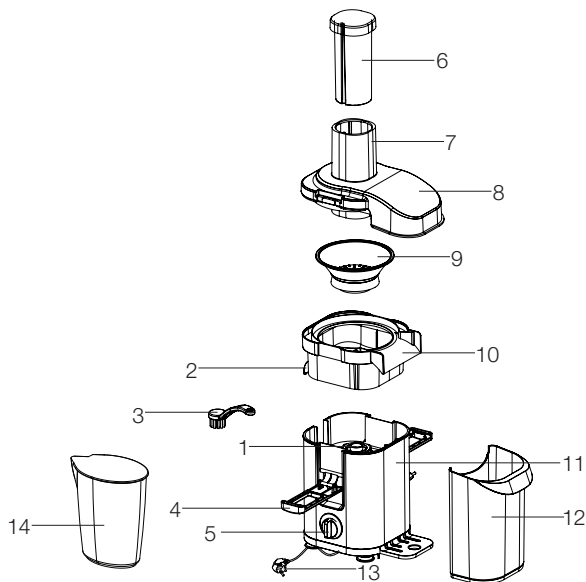
authorised service center.

10. Make sure all parts are correctly mounted before you switch on the appliance.
11. Do not operate the appliance for more than 2 minutes at a time when heavy loads and let it cool down sufficiently afterwards by turning the switch knob to " O ".
12. Never put your fingers or any other substance into the food channel. Only the pusher should be used for this purpose.
13. Only unlock the locking latch after you have switched the appliance off by on/off switch and the filter has come to a full stop.
14. Do not remove the dregs container when the appliance is in operation.
15. Do not touch the small cutting blades on the base of the filter.
16. Turn off the appliance by the on/off switch and always unplug it after use.
17. Never immerse the motor unit in water or any other liquid. Use a damp cloth for cleaning.
18. Prepare the fruit at the size of the food channel to place them into it, and perform juicing.

Special Suggestions:

1. Remove seeds of fruits with big seeds such as peach, apricot, plum and cherry, and peel off the fruits with thick rind or inedible rind.
2. To extract more juice, don't push the pusher hastily.

2 Technical aspects of your appliance



- 1- Gripper
- 2- Juice outlet
- 3- Filter cleaning brush
- 4- Locking latch
- 5- Operating button
- 6- Pusher
- 7- Food supply channel
- 8- Transparent filter cover
- 9- Filter
- 10- Filter container
- 11- Body
- 12- Dregs container
- 13- Power cable
- 14- Juice container

Voltage: 220-240V ~ 50/60 Hz

Power : 800W

Isolation class: II

Markings on the product or the values stated in other documents supplied with the product are values obtained under laboratory conditions as per relevant standards. These values may vary according to the usage of the product and ambient conditions.

3 Using the appliance

Preparation for Operation

1. Unpack all parts and check if they have any visual damage or not. Contact the authorized service if there is any damage.
2. Before the initial operation, wash those parts of the appliance that will touch fruits in lukewarm detergent water.

Preparing food

Juicer quickly extracts the juice and dregs of hard fruits. First wash and clean the fruits to be squeezed and cut them into pieces at sizes that can be pushed into the food supply channel. This appliance is equipped with safety switches which will prevent the user to operate the appliance unintentionally while it is not installed completely.

1. Citrus Fruit- Peel and remove the white pith, otherwise the juice may taste bitter.
2. Please cut off the hard part of the front of the carrot when you juicing.
3. If the fruits such as apples and etc. does not fit into the supply channel please slice them into pieces.

Assembly and use

1. Place the dregs container to its seat on the body. Install filter container onto the body so that it will cover the dregs container.
2. Place the filter onto the holder and push downwards to install it in

correct position.

3. Place the transparent filter cover. Engage the latches onto the cover and push them against the body to lock the cover.
(Figure 1) Locking latch is open
(Figure 2) Locking latch is closed

ATTENTION!

After running your product in the speed indicated in the user manual (1 or 2) for 10 seconds, place the foods into the supply channel to start juicing. Otherwise, a failure which is not covered by the warranty may arise in your product.

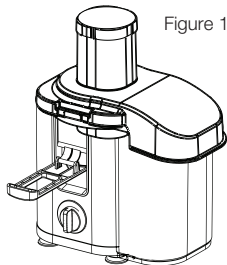


Figure 1

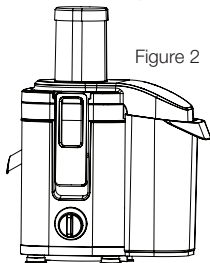


Figure 2

Warning

-Your juicer will not work if the lid is unlocked.

-Never insert your fingers into the food supply channel.

Do not operate the juicer without the dregs container fitted.

4. Place the juice container to the juice outlet. And remove the cover.

5. Plug the appliance in and run it in the suitable speed level. Select low speed level for fruits such as peach and apricot. If the fruit is hard such as apple or carrot, select high speed level.

6. When using the pusher, align its groove with the notch inside the food supply channel. Push the food down with pusher.

7. Do not apply too much pressure onto the pusher if the fruits or vegetables are too big or the food supply channel is full. This will affect the juicing performance and even stop the juicer when it is forced too much. Please break the large foods into small pieces that can fit into the supply channel. Place the sliced foods into the supply channel and push lightly with the pusher.

8. The foam separator in the juice container ensures that the juice is free from foam.

9. When juicing hard foods we recommend a maximum quantity of 1.5 kg in one batch with a maximum operation time of 2 minutes. Some hard foods may slow down or stop your juicer. In such a case, switch off the appliance, remove the filter and clean it.

10. If the filter is clogged during usage, switch off the appliance, empty the dregs container and clean the filter.

11. Turn off the appliance by moving the on/off switch to "0" position after you are finished with juicing process and make sure that the filter comes to a full stop.

To take your juicer apart

Reverse the assembly procedure to take the juicer apart.

Hints

1. Insert soft food slowly to get the most juice.

2. Vitamins disappear – the sooner you drink your juice, the more vitamins you'll get.

3. If you need to store the juice for a few hours put it in the fridge. It will keep better if you add a few drops of lemon juice.

4. Don't drink more than three 230 ml glasses of juice a day unless you're used to it.

5. Dilute juice for children with an equal amount of water.

6. Juice from dark green (broccoli, spinach etc) or dark red (beetroot, red cabbage etc.) vegetables is extremely strong, so people with diabetes or low blood sugar should avoid drinking to much.

4 Cleaning and care

1. Switch off your juicer, unplug it and wait until the filter stops before cleaning the appliance.
2. Remove the dirty parts from the body unit in the following order.
 - Open the locking latch and remove the transparent filter cover together with the pusher.
 - Remove the dregs container.
 - Remove the filter together with the filter cover.
3. Some foods such as carrot will discolor the plastic. Wipe the discolored plastic with a cloth dampened in olive oil.
4. Wipe the body unit with a damp cloth and then dry it. Never immerse into water and do not use abrasive detergents. They may damage the body.

Filter

1. There are sharp blades under the filter. The brush supplied with the product can facilitate filter cleaning. Dry the filter completely after cleaning it.
2. Check the filter regularly for signs of damage. Do not use if the filter is damaged.

Note: We recommend you to perform the filter cleaning with the cleaning brush immediately after juicing process in order to facilitate cleaning.

Other parts

Wash with hot soapy water and then allow them dry completely. Do not wash the parts in dishwasher.

Juice outlet is an integral part of the filter container and can not be removed. Please pay attention to this while cleaning the filter container.