

# Icecrypt S3700CHD

- מהירות תגובה גבוהה הודות למעבד מדור מתקדם
- יכולת סריקת תדרים blind scan מהירה
- אתר app store המופעל בידי היצרן לצורך הוספת יכולות מולטימדיה למכשיר
- פונקציית PVR מאפשרת הקלטת שני ערוצים תוך צפייה בשלישי בו זמנית
- ניתן להעתיק את ההגדרות לצלחות קליטה ממונעות עבור לוויינים נוספים





# Triple Tuner PVR

The new Icecrypt S3700CHD is characterised by its elegant front panel featuring a perfectly readable VFD display, two Conax smartcard readers hidden behind a flap, a total of seven buttons for front-end operation without the remote control, and a USB port. The back panel of this new triple tuner PVR sports three tuner input sockets complete with

loop-through outputs (2x DVB-S2, 1x DVB-T/C), a USB port, HDMI and RF-45 network interfaces, 3 RCA jacks for stereo audio and composite video, a euroscart connector, one optical and one coax audio output, a UHF modulator as well as an RS232 interface. All this is completed by a much-appreciated mechanical power switch which adds some more icing to the cake.

The remote control that is part and parcel of the overall package sits rather nicely in your hand, comes with self-explanatory labelling and – most importantly – boasts conveniently spaced buttons that can easily be operated with more robust fingers as well. The manual is provided in German and English and cannot be faulted in any way.

Like most receivers these days, the Icecrypt S3700CHD comes with an installation assistant that provides valuable help

when it comes to setting up the box for the first time. It asks for your preferred on-screen language, local time and network parameters, as well as for the desired video resolution. Speaking of that, we did appreciate the fact that 1080p can be selected, which makes this receiver truly fit for the future in terms of full HD capabilities. The initial setup also requires users to select a PIN for preventing unauthorised use, and offers automatic software update messages or other important alerts that are sent directly by the manufacturer.

Once the box is ready for take-off the main menu offers a quick channel search option, which relies on a



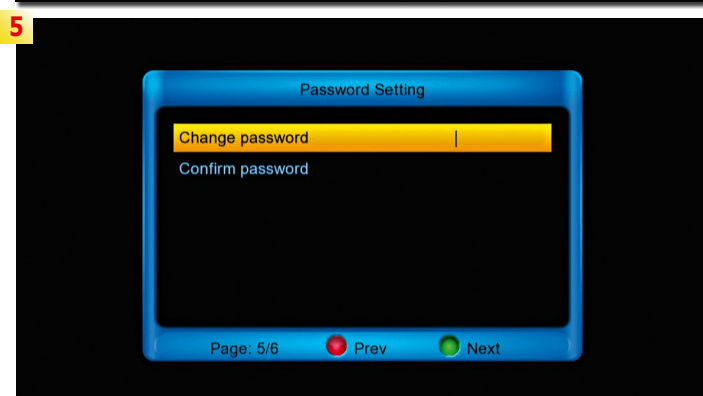
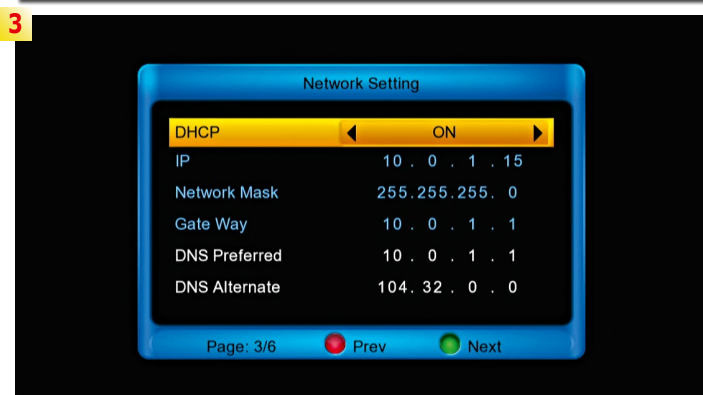
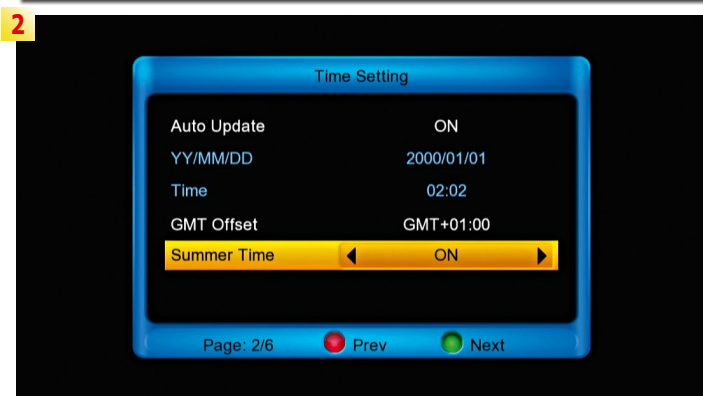
Tested & Recommended Product by  
**TELE-audiovision International**  
The World's Largest Digital TV Trade Magazine

**TELE**  
**audiovision**  
**AWARD** 11-12/2013

Icencrypt S3700CHD  
Excellent hardware  
in tandem with sophisticated  
but easy-to-use software.

[www.TELE-audiovision.com/13/11/icencrypt](http://www.TELE-audiovision.com/13/11/icencrypt)





total of 50 pre-stored orbital positions in the internal database. Unfortunately, however, some entries are missing, which becomes evident when comparing the results of a blind scan search on HOT-BIRD 13° East with those of a standard search on the same position. The default software supports all DiSEqC protocols (1.0, 1.1, 1.2 and 1.3), allows freely selectable LOF values and will work flawlessly with SCR unicable solutions as well – thumbs up for all this versatility! We also discovered another great feature of the Icecrypt S3700CHD: All DiSEqC 1.3 motor settings determined for a satellite position can easily be copied to work with all other satellite entries of the internal database as well. This may sound like only a minor benefit, but we know from experience how tiresome it can be to manually edit each satellite entry for motor control. So well done, Icecrypt!

By the way, whenever you're unsure which port of your DiSEqC multiswitch is connected to the currently desired satellite you can always use the Auto DiSEqC function which will provide you with all details you require – another hugely valuable Icecrypt software feature.

Let's get back to the satellite search for a moment. You can either opt for an automatic scan across one or more satellites or one or more transponders, or you can go for a blind scan search instead. A standard search on HOTBIRD 13° East took some five minutes and resulted in 1518 TV channels and 361 radio stations. A blind scan, on the other hand, yielded 1707 TV channels and 414 radio stations in eight minutes. As far as we are concerned, those extra three minutes are time well spent when considering the excellent blind scan result.

In the non-satellite realm you need to first select DVB-T or DVB-C before launching the channel search. Unfortunately, the new Icecrypt box is not compatible with DVB-T2, a relatively recent transmission standard that is predominantly used for terrestrial HD channels. In our test, the S3700CHD took a little more than three minutes for a search across the entire frequency band, and thanks to an optional +5V supply voltage transmitted via the inner coax wire it is possible to also use DVB-T antennas with built-in signal amplifier.

You'll surely appreciate that for the Icecrypt software the sky is the limit when it comes to the maximum number of channels to be stored. Even though, it makes a lot of sense to bring some order and clarity into the overall channel offering. Individual channels can be moved, renamed, PIN-locked or deleted, and the entire list can be sorted according to satellite, alphabet, provider, conditional access system, HD, broadcaster or favourites. Speaking of favourites, you can set up a total of 32 of

#### 1: Installation assistant of the Icecrypt S3700CHD

#### 2: Setting the time

#### 3: Network configuration

#### 4: Video output settings

#### 5: A PIN code has to be set during the initial installation routine

#### 6: New software alerts and other important news can be shown right on the receiver, if selected by the user

#### 7: Main menu of the Icecrypt S3700CHD

#### 8: Installation menu

#### 9: Software update via USB

#### 10: Tuner settings

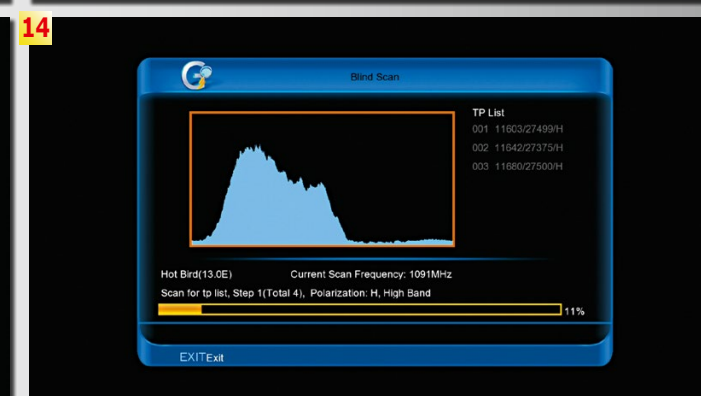
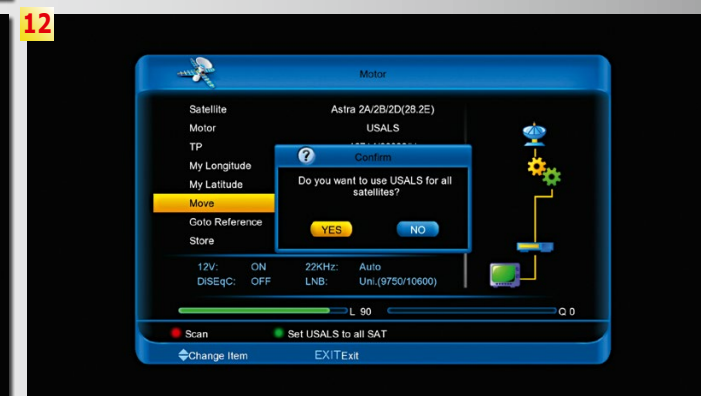
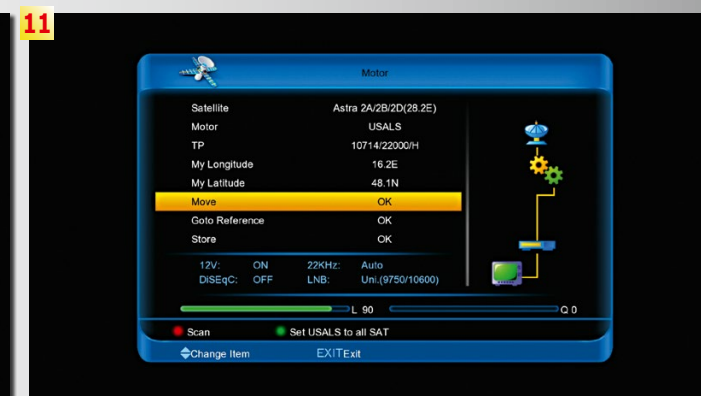
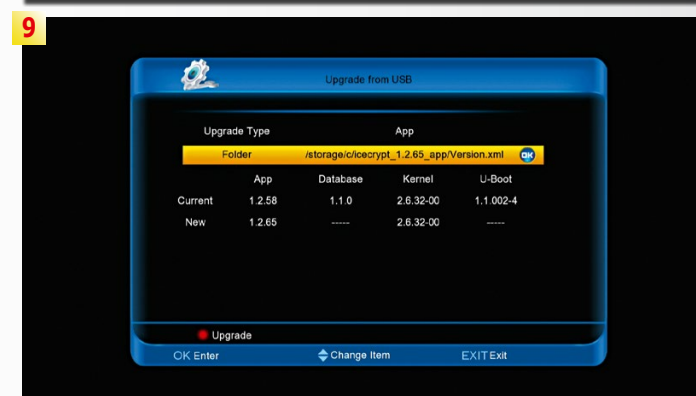
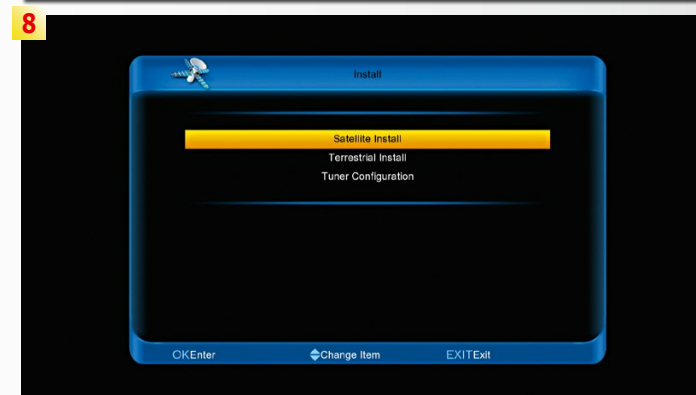
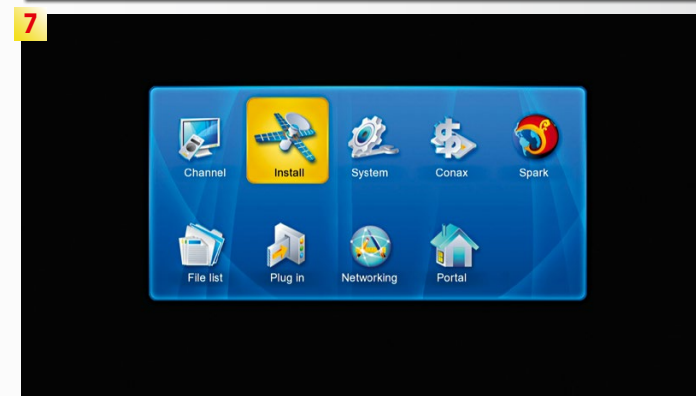
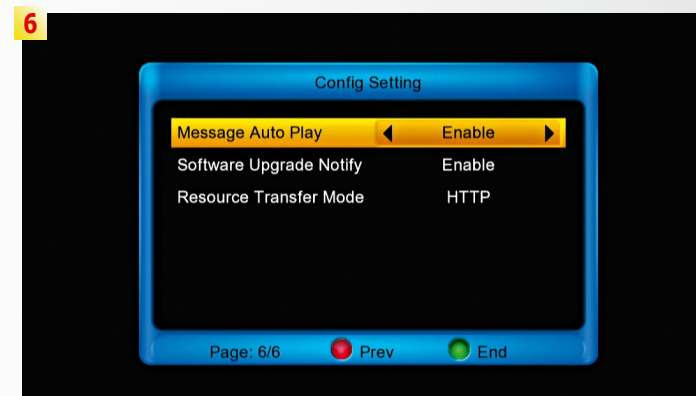
#### 11: DiSEqC 1.3 settings

#### 12: If desired, DiSEqC 1.3 settings can be taken over for all satellite entries

#### 13: The Auto DiSEqC function automatically detects which port is used for the selected satellite

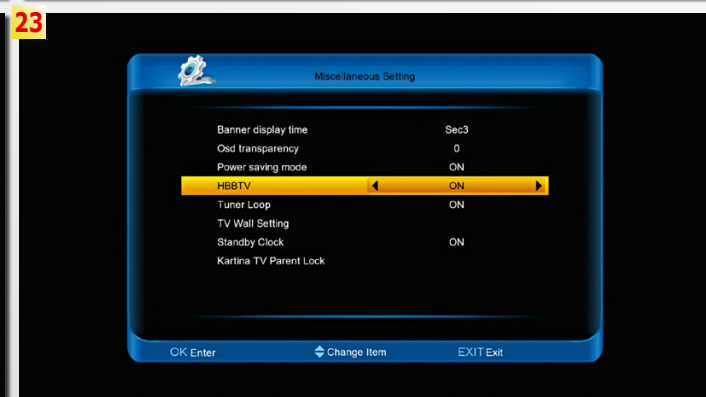
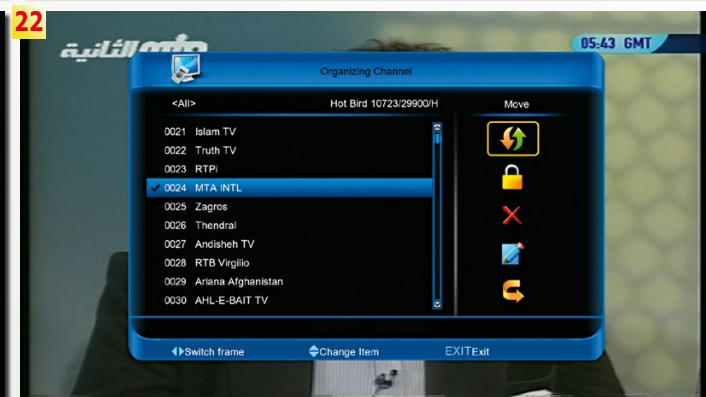
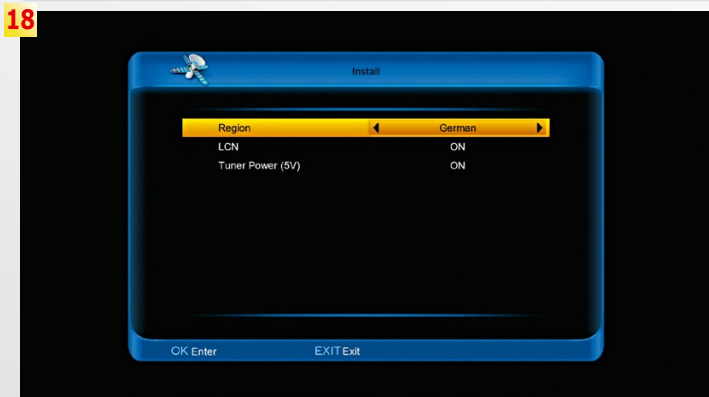
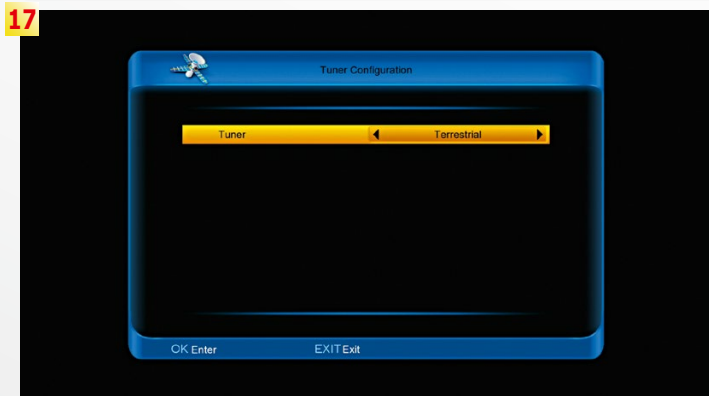
#### 14: Blind scan

#### 15: 1707 TV and 414 radio channels were found on HOTBIRD 13° East with a blind scan





16. Individual transponder entries can be deleted, added or edited
17. Users have to decide between DVB-T and DVB-C for the third tuner
18. Tuner settings for terrestrial reception
19. Terrestrial channel search. DVB-T2 is not supported, which is why the receiver finds only 13 TV channels and one radio station
20. All 32 favourites lists can be given individual names
21. Editing a favourites list
22. Editing the channel list
23. Various basic settings
24. A/V settings







them, all named and organised to meet your personal demands. So there's no excuse any longer for not having all your favourite channels at your fingertips whenever you need them!

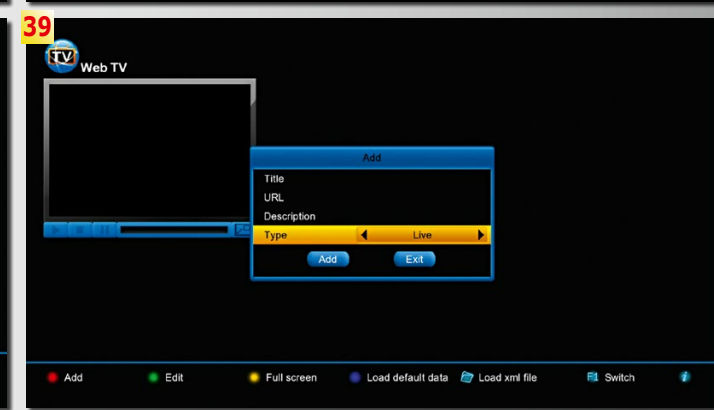
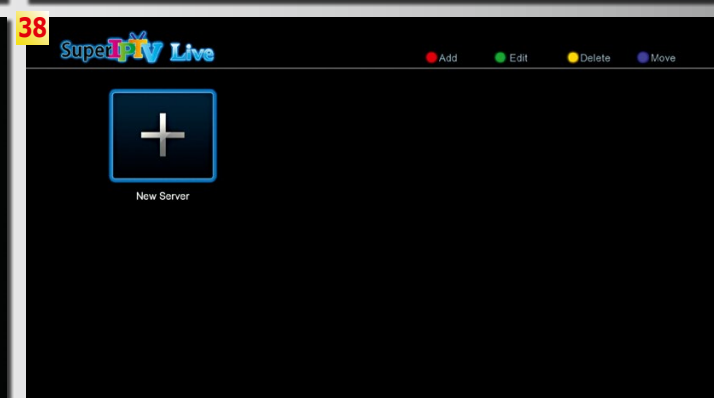
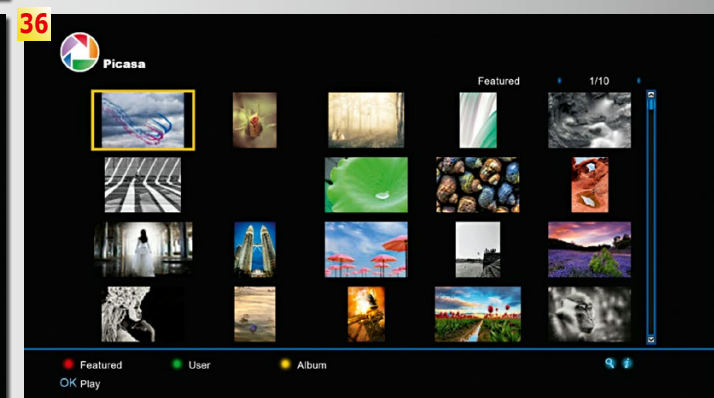
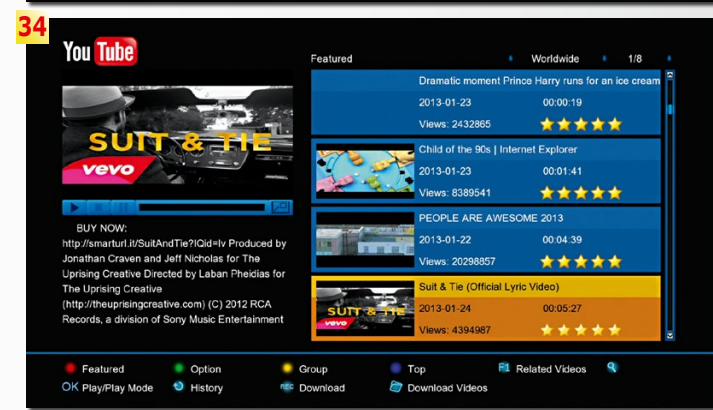
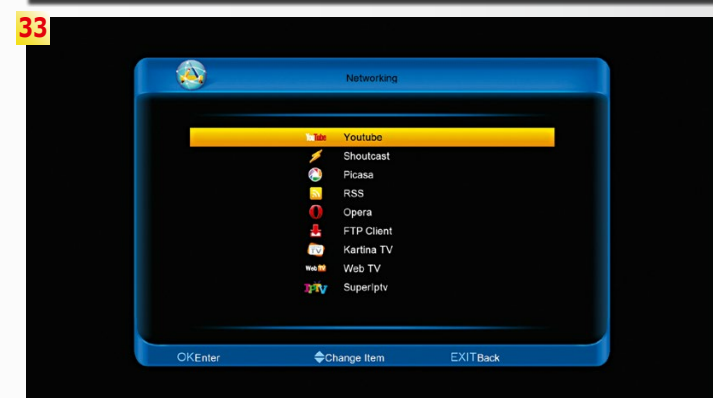
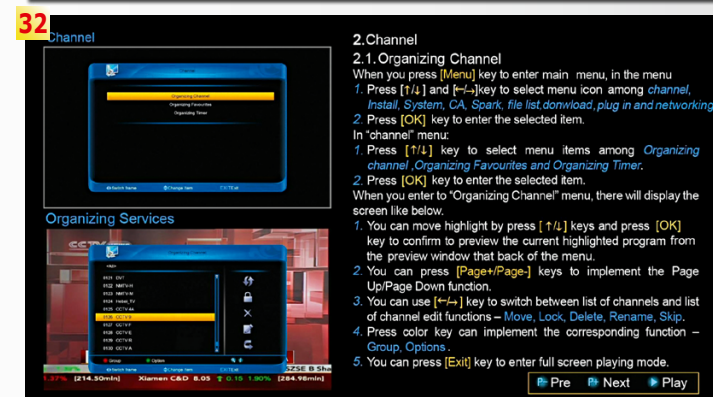
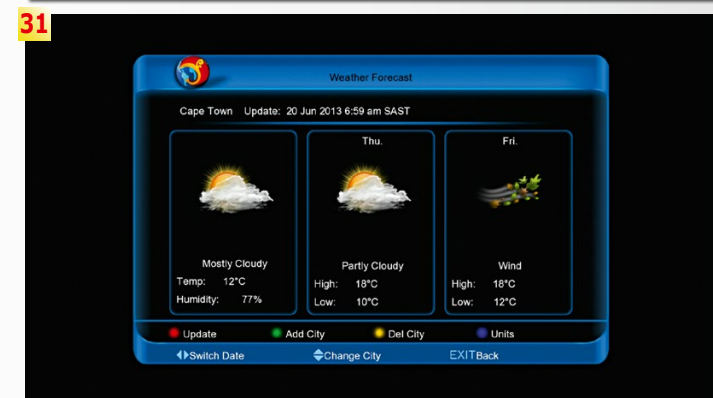
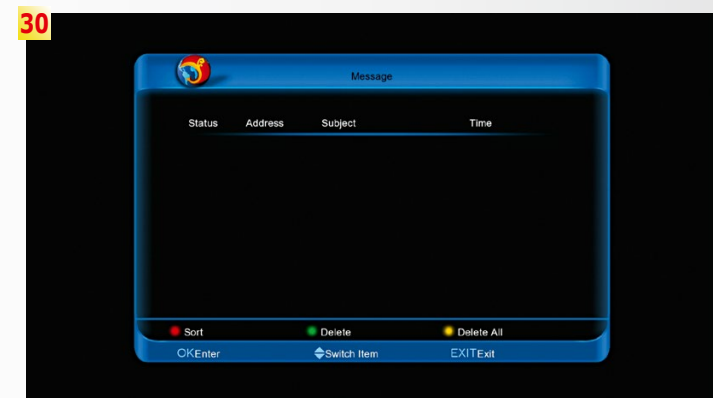
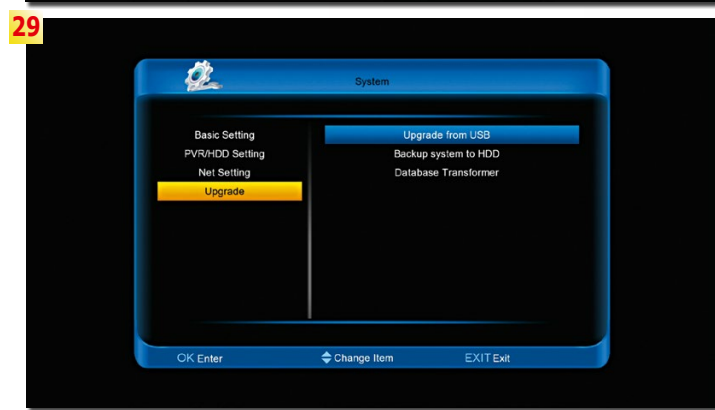
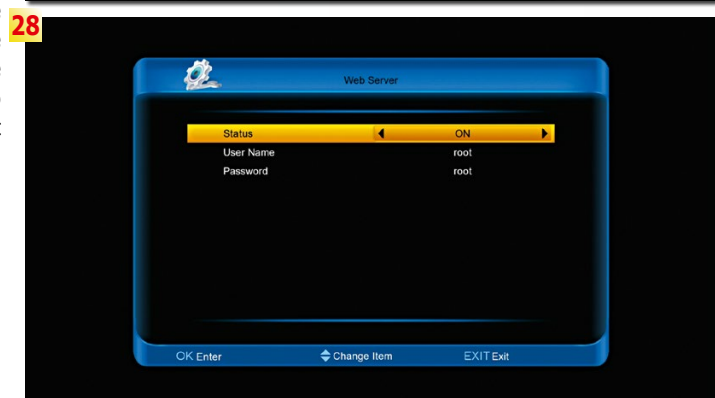
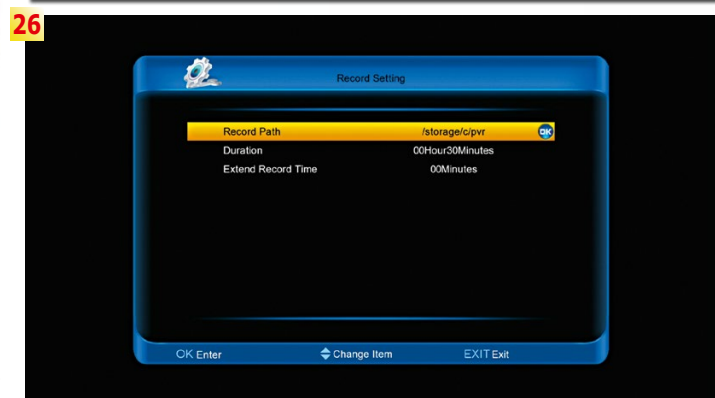
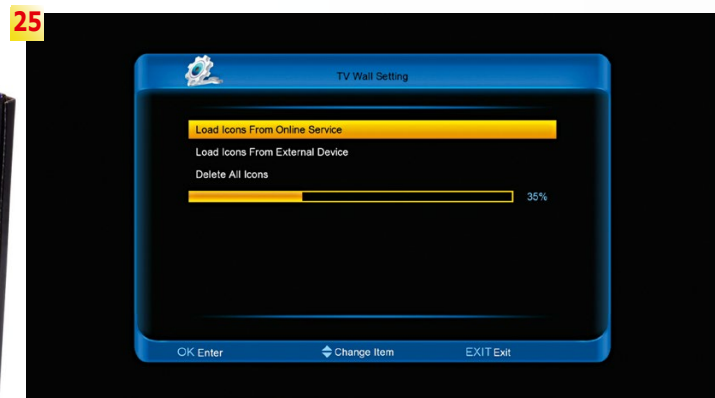
In addition, the settings menu sports a very user-friendly layout, which means owners of the S3700CHD are spoilt for choice in terms of customising their receiver. Quite frankly, we could not ask for more: You can set a certain after-run period to make sure your recordings are not cut off in case of changes in a channel's schedule, you can define the size of the timeshift buffer, configure network access with an external WiFi or 3G dongle, save the channel list and all settings onto an external storage medium or update the receiver's operating software. The choice is yours, and all functions can be used or adjusted with remarkable ease of use.

Most receivers we have tested so far open the channel list with a touch of the OK button, and the S3700CHD is no exception. The list is divided into three rows, with the first row listing the sorting options (all, favourites, satellite, alphabet, provider, CAS, HD, top and broadcaster), the

second row offering sub-categories (such as encryption system used, available favourites lists or providers, etc.) and the third row showing the resulting channels for final selection. This three-stage layout leads you to your final destination in an extremely straightforward manner.

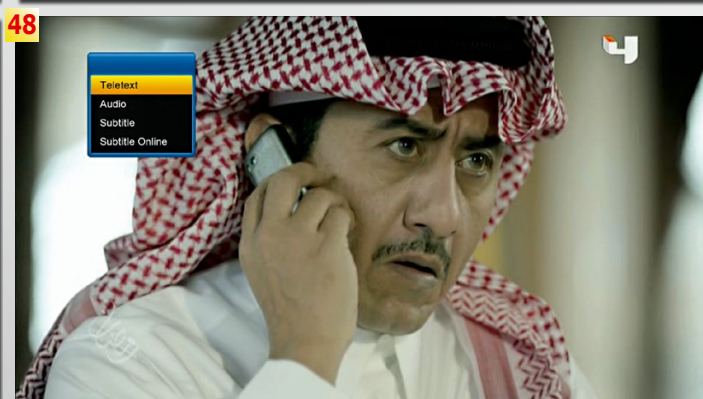
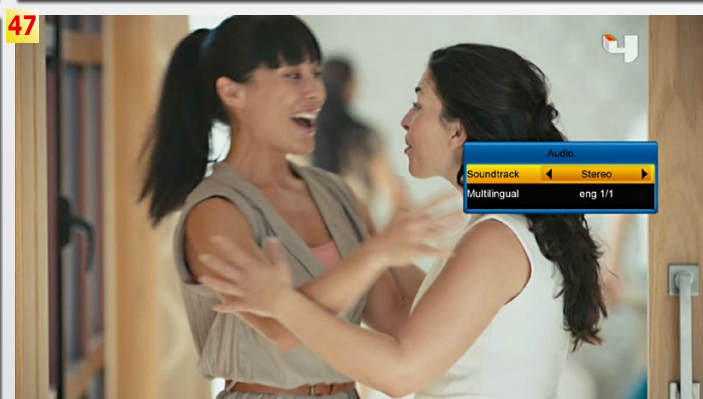
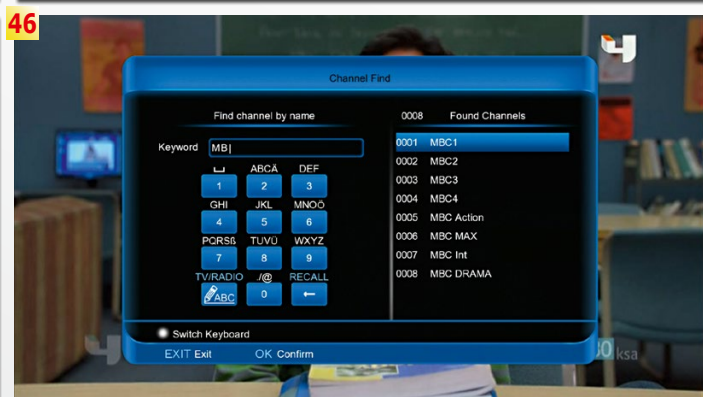
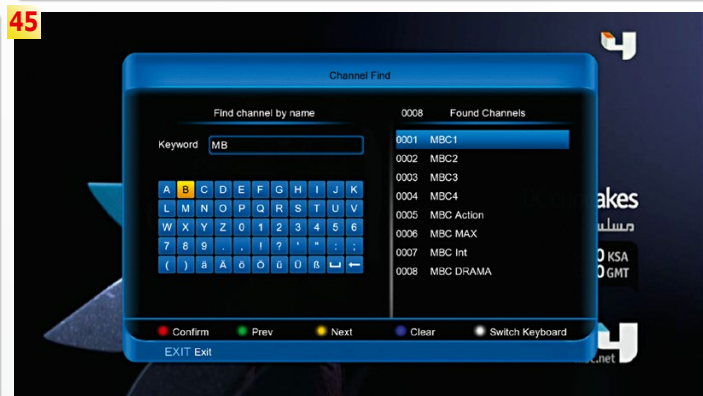
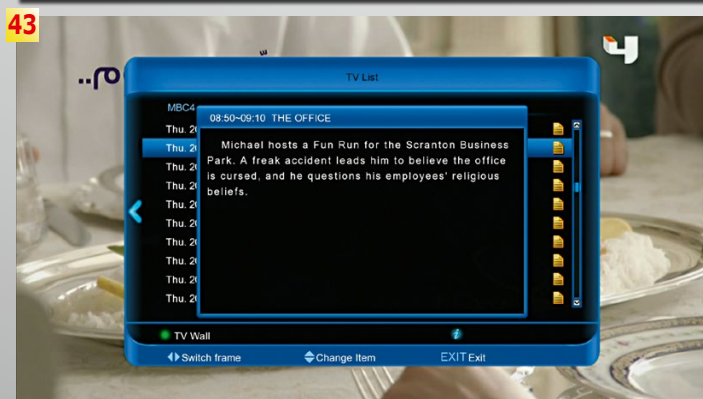
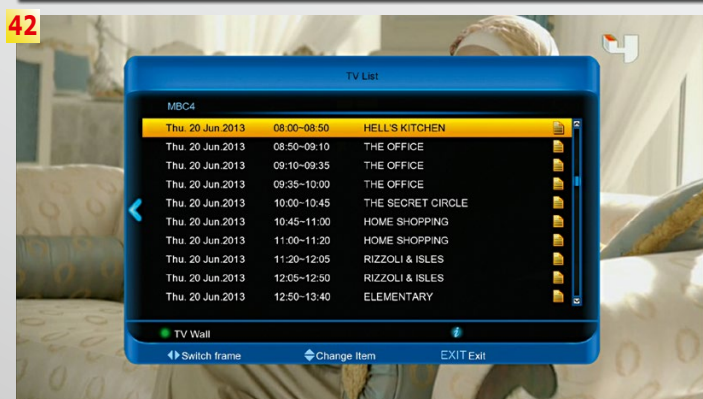
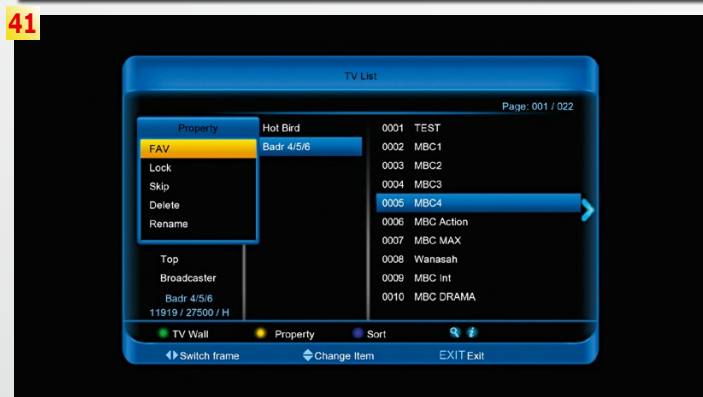
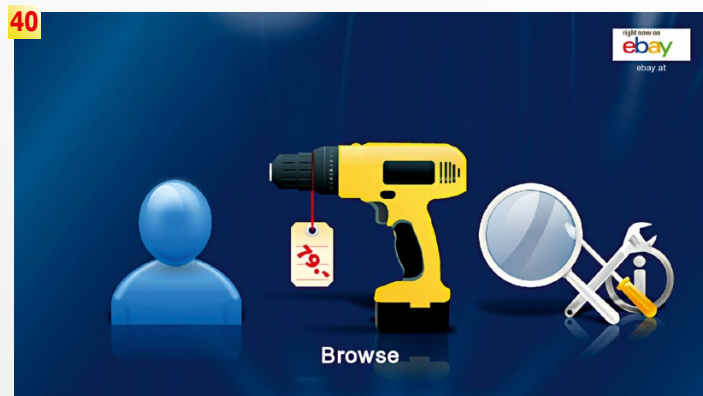
Another software plus we noticed is smooth integration of the electronic program guide (EPG) into the channel list – if you're in the third column of the channel list a press of the right arrow button calls up all EPG data for current

- 25. TV Wall icons can be downloaded from the Internet
- 26. PVR settings
- 27. 3G connection parameters
- 28. Web server settings
- 29. The complete channel list can be saved onto an external storage medium
- 30. This is the place where messages and alerts from the manufacturer will be displayed
- 31. Weather forecast
- 32. FAQ and the manual are integrated right into the receiver software
- 33. Built-in multimedia features of the Icecrypt S3700CHD
- 34. YouTube
- 35. Shoutcast
- 36. Picasa
- 37. Opera web browser
- 38. IPTV Player
- 39. WebTV Player

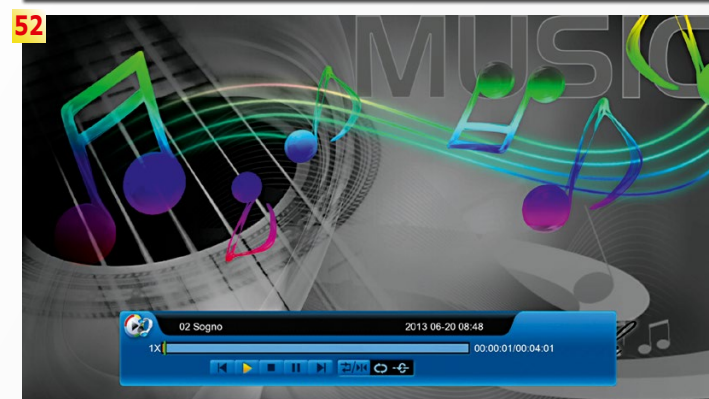
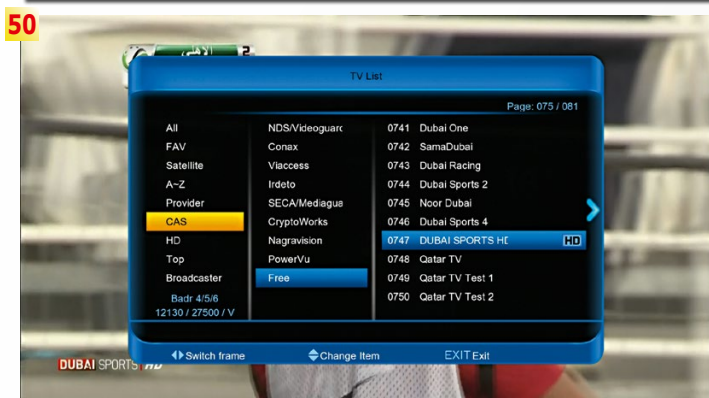




40. ebay app
41. Channels can be edited right in the channel list
42. Upcoming events of the selected channel
43. Extended event information
44. Info bar with titles of current and next broadcast
45. Channel search with PC-style on-screen keypad
46. Channel search with telephone-style alphanumeric keypad
47. Language selection
48. Teletext, subtitles and a preferred audio language can easily be selected







events broadcast on channels appearing on the list. Pressing the same button once again then calls up events coming up on the currently selected channel. If our opinion is anything to go by, we can hardly think of a more user-friendly EPG arrangement.

A dedicated button on the remote control gives all users of the S3700CHD an option to search for any channel by name. The on-screen keyboard that appears on the TV panel can either be shown as a standard PC keyboard or as an alpha-numeric keypad like on telephones.

During our simulated everyday use this new Icecrypt receiver shined with its excellent responsiveness to all commands sent from the remote control. If you

look beyond the box's great looks, it's easy to find out why it is so very capable: Apart from its 450 MHz CPU it boasts a 2 MB NORE flash memory, 512 MB of NAND flash memory as well as 2 x 128 MB DDR random access memory. All this adds up to make the S3700CHD a genuine powerhouse. Both video and audio quality are equally impressive and leave nothing to be desired. Added to that is a channel switching time of less than one second, so that all those sofa surfers out there will quickly become channel zappers as well. HbbTV content of channels offering that service can be used to access multimedia libraries, enhanced EPG data and lots of channel-specific features with the S3700CHD. The PVR function of the Icecrypt receiver allows simultaneous recording of two events, while a third channel is being watched live. We would have loved to see this receiver record three or even four events at the same time, but please make no mistake about it – we're complaining to high

heaven here... Now that we're through all of the basic features and functions of the new Icecrypt box we should take a moment to deal with the huge range of extra features that offer lots of added value. First and foremost, we have to mention the message function that is integrated in the Icecrypt software: It can be used by the manufacturer to display important information right on a user's TV screen.

Available software updates can easily be announced this way, for example. If this is the case the update procedure is a flawless and efficient affair, and Icecrypt even provides a change log with extended information on new features. What a great benefit! Generally, the Icecrypt software has a clear focus on usability and this is underpinned by the digital user's manual that can

be accessed right from the receiver's menu, together with a list of frequently asked questions. Remember the times when you had to think about where you had put the manual in the first place, then dig it out of a drawer or closet only to take forever until you find the specific section you're looking for? No more trouble with the S3700CHD – take the remote, press a button and find the answer right on your screen.

As far as integrated multimedia features are concerned the Icecrypt soft-

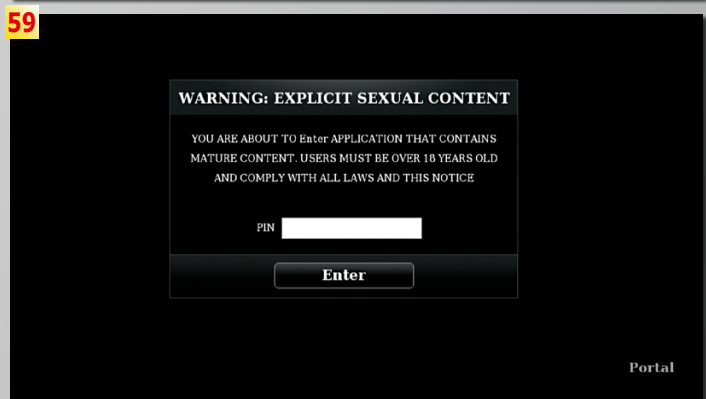
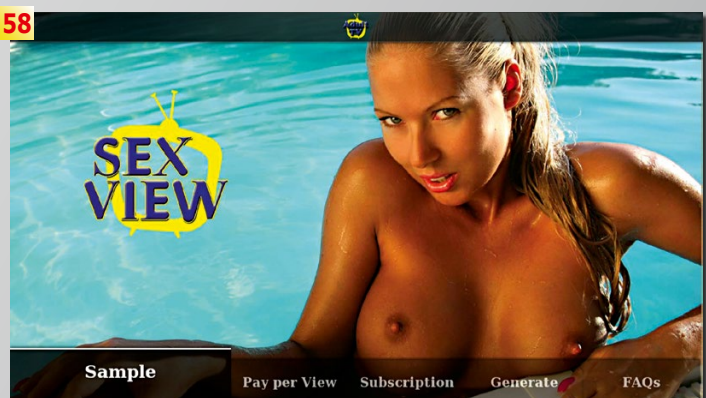
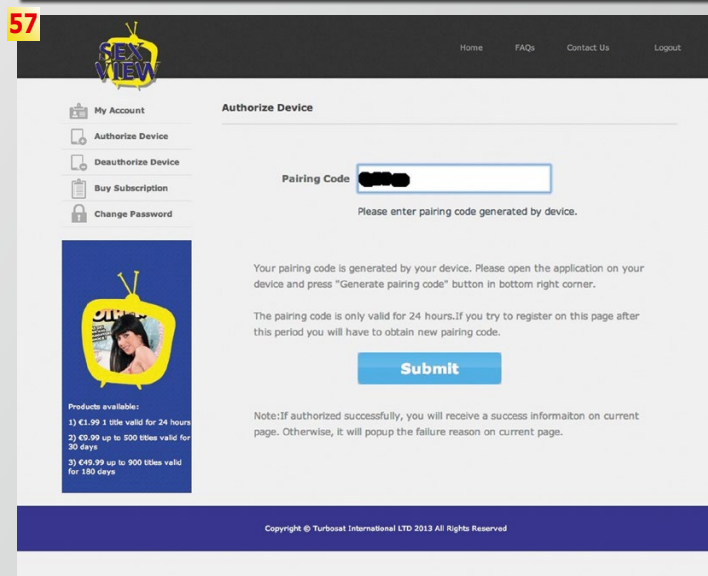
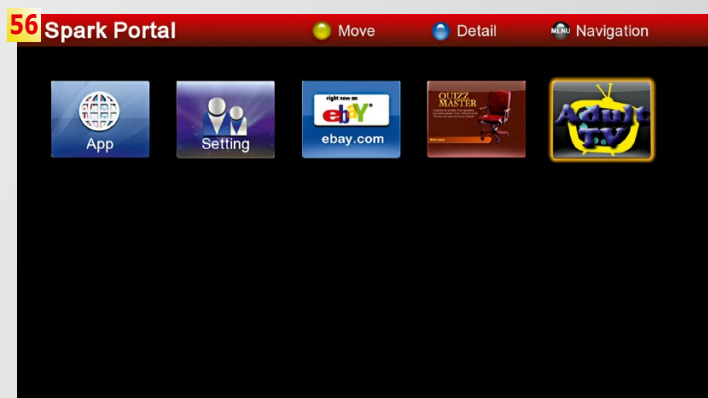
ware offers standard fare such as a weather forecast service, but also specials like YouTube, Shoutcast (Internet radio), Picasa (pictures) and even access to Russian pay TV provider Kartina TV. Added to that are a web browser (Opera), an FTP client and an RSS newsreader. IPTV and WebTV are also offered, but in both cases we could not find any pre-stored channels, which means users need to manually set up

these services. Our thorough test confirmed that all built-in features work smoothly and flawlessly, no matter whether we're talking about a YouTube video, a Shoutcast stream, an RSS feed or a website.

Obviously, the S3700CHD can be used for playing back audio and video files

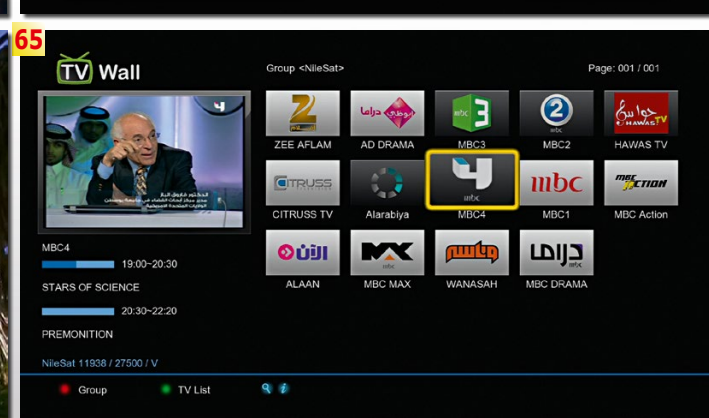
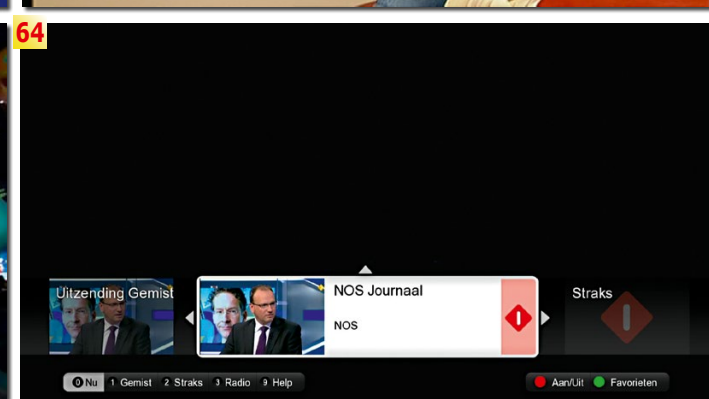


- 49. EPG view
- 50. Various sorting options of the channel list
- 51. Satellite selection
- 52. MP3 playback
- 53. Image viewer
- 54. Playing back an AVI test video
- 55. Playing back a DivX test video



- 56. The Sexview app can easily be downloaded from the app store of Icecrypt receiver
- 57. On the Sexview website the user has to type in the registration code generated by his receiver
- 58. Main menu of the Sexview app
- 59. The channel is child protected by a PIN





- 60. Playing back a Flash test video
- 61. Playing back a MOV test video
- 62. Playing back a MP4 test video
- 63. Playing back a TS test stream
- 64. HbbTV support
- 65. TV Wall function of the Icecrypt software

and will happily accept the following formats: AVI, MKV, MPG, TS, WMA, WMV, M2TS, FLV, DAT, ASF and MP3. In addition, your latest holiday photos in JPEG beg to be presented on the TV panel, too.

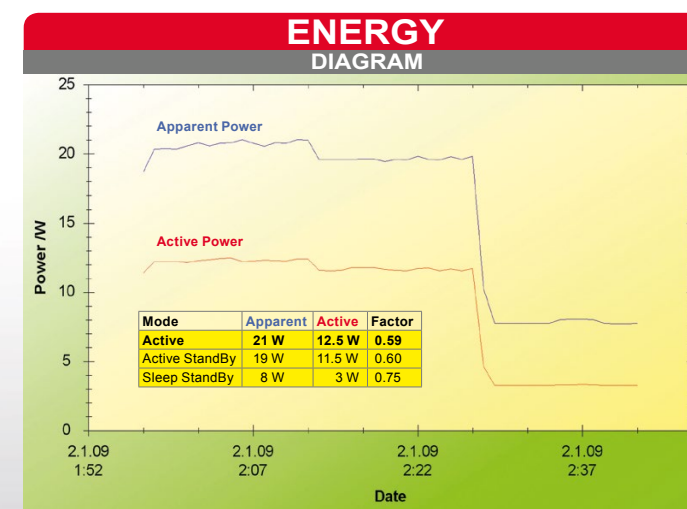
There is even an in-house app store run by the manufacturer and offering dozens of free extensions for the S3700CHD. Are you looking for an ebay client, content libraries, sports news, games or even food deliveries? Simply browse through the app store and chances are you will find just what you're looking for.

An exclusive is the adult service Sexview, which is available only with the Icecrypt receivers T2300HD and S3700CHD. After a short registration on their

website a unique account is created based on the MAC address of your receiver. In our test this service worked flawlessly and we also found picture quality exceptionally good. We appreciated this app is safeguarded by a PIN Code.

Lastly, we would like to draw your attention to a special feature that turned out truly beautifully: It's called TV Wall and consists

of the names and logos of 20 TV channels at time, complete with their EPG data and a live preview window. The TV Wall can be displayed instead of the conventional channel list and channel logos can be downloaded from the Internet and edited on the PC. A great idea that vastly enhances the way your new Icecrypt receiver looks and feels on screen.



Active use during the first 15 minutes, active standby during the second 15 minutes (the receiver will wake up instantly, if required), sleep standby in energy-saving mode during the third 15 minutes (the receiver will take some time to wake up from this mode).

EXPERT  
OPINION

Icecrypt S3700CHD  
Triple Tuner PVR
RECOMMENDED  
PRODUCT BY

Thomas Haring  
Test Center  
Austria

VIP

CARD

TELE  
audiovision  
www.TELE-audiovision.com

**+** The S3700CHD is a solid and very capable triple tuner PVR with an excellent range of features and functions. Based on a top-notch software platform it offers enormous versatility. Thanks to Full HD support and regular software updates this new Icecrypt receiver not only marks the state of play today, but will stay fit for future enhancements.

**-** Unfortunately, DVB-T2 is not supported by the terrestrial tuner, and only two simultaneous recordings are possible.

