



MAXPOWER WTP450 User's Manual

IMPORTANT (Please read before using this product)

- Thank you for purchasing our product.
- To get the most from your WTP450, please read this manual thoroughly.

BASICS

1.1 Universal Plugs

Select the appropriate plug in WTP450 [see Figure (1)] (Note: WTP450 does not apply to voltage conversion).

1.2 USB Output

USB output (5V/2.1A) [see Figure (2)] for charging any of your 5V portable device.

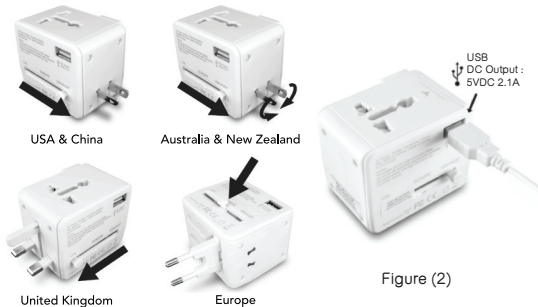


Figure (2)

Figure (1)

1.3 Status Indicator

The status indicators on WTP450 [see Figure (3)] display different operation conditions.

Status	
POWER	Illuminated: Connected with power supply
WAN/LAN	Illuminated: No signal is detected Flashing: Network signal is detected
WiFi	Illuminated: Wireless connection is ready Flashing: Wireless connection is activating

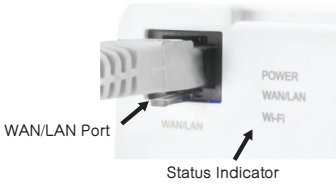


Figure (3)

SET UP A WIRELESS CONNECTION

2.1 How to Add a New Wireless Connection

- Connect WTP450 with the power supply.
- Plug the network cable to the WAN/LAN Port [see Figure (3)].
- Search and connect the device "Travel_WiFi-XXXX" on your consumer electronic device or computer. (Note: "XXXX" denotes the default product ID printed on WTP450) [see Figure (4)].
- Input WTP450 default password "12345678".
- Connection set up completed and enjoy surfing the Internet.

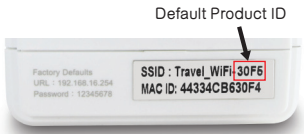


Figure (4)

2.2 How to Change Service Set Identifier (SSID) and Password

- Connect WTP450 with the power supply. (Note: please DO NOT connect a network cable)
- Search and connect the device SSID "Travel_WiFi-XXXX" on your consumer electronic device or computer. (Note: "XXXX" denotes the default SSID printed on WTP450)
- Input WTP450 default password "12345678".
- Start a web browser on your device and enter http://192.168.16.254 in the URL to enter the Quick Setting page.
- Press <Exit> and enter the Advanced Setting page [see Figure (5)].
- To change the SSID, press <Basic> on the Advanced Setting page, and enter the new SSID in "Network Name (SSID)" field, click <Apply> to proceed [see Figure (6)].
- To change the password, press <Security> on the Advanced Setting page, and enter the new password in "Pass Phrase" field, click <Apply> to proceed [see Figure (7)].

2.3 How to Extend the Range of Wireless Network Coverage

- Connect WTP450 with the power supply. (Note: please DO NOT connect a network cable)
- Search and connect the device SSID "Travel_WiFi-XXXX" on your consumer electronic device or computer. (Note: "XXXX" denotes the default SSID printed on WTP450)
- Input WTP450 default password "12345678".
- Start a web browser on your device and enter http://192.168.16.254 in the URL to enter the Quick Setting page.
- Enter WTP450 SSID and password (To change, please see Section 2.2), press "Next" [see Figure (5)].
- Choose <Wireless Connection> and press <Next> [see Figure (8)].
- Choose the SSID of the external wireless device that you intend to extend the wireless network coverage and press <Next> (if no external wireless device is found, press <Re-Scan> to search again) [see Figure (9)].
- Input the password of the external wireless devices (if no password is needed, skip this step) and press <Next> [see Figure (10)].
- Wait about 60 seconds for setting [see Figure (11)].
- Press <OK> when the connection setup is completed [See Figure (12)].



Figure (5)

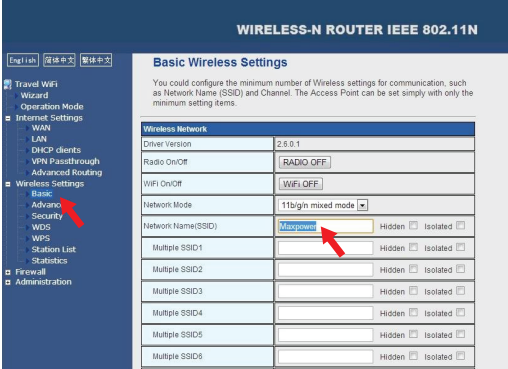


Figure (6)



Figure (7)

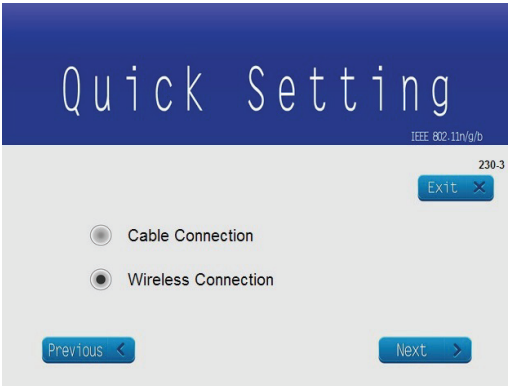


Figure (8)



Figure (9)

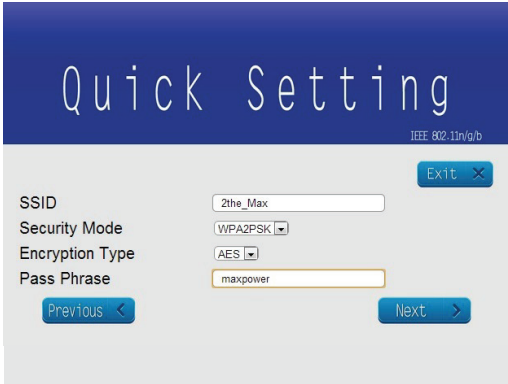


Figure (10)



Figure (11)

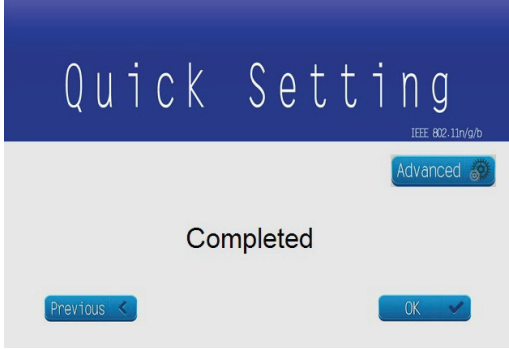


Figure (12)

2.4 Restore Factory Settings

- Connect WTP450 with the power supply.
- Use a paperclip to press the <RESET> button [see Figure (13)].
- Press for 6 seconds and release the <RESET> button.
- Wait for about 8 seconds until both the WAN/LAN and WiFi Status Indicators are off [see Figure (3)].
- While the WAN/LAN Status Indicator is on and the WiFi Status Indicator starts flashing, the reset process is completed.



Figure (13)

TECHNICAL SUPPORT AND CUSTOMER SERVICE

If you need any technical support or customer service, please contact your local authorised dealers.

Maxpower USA
2033 Gateway Place, Suite 500
San Jose, CA 95110, USA

Customer Service (US / Canada Toll Free) :

1-800-390-0193

www.maxpower.us.com