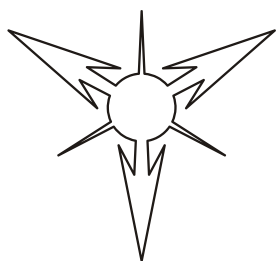
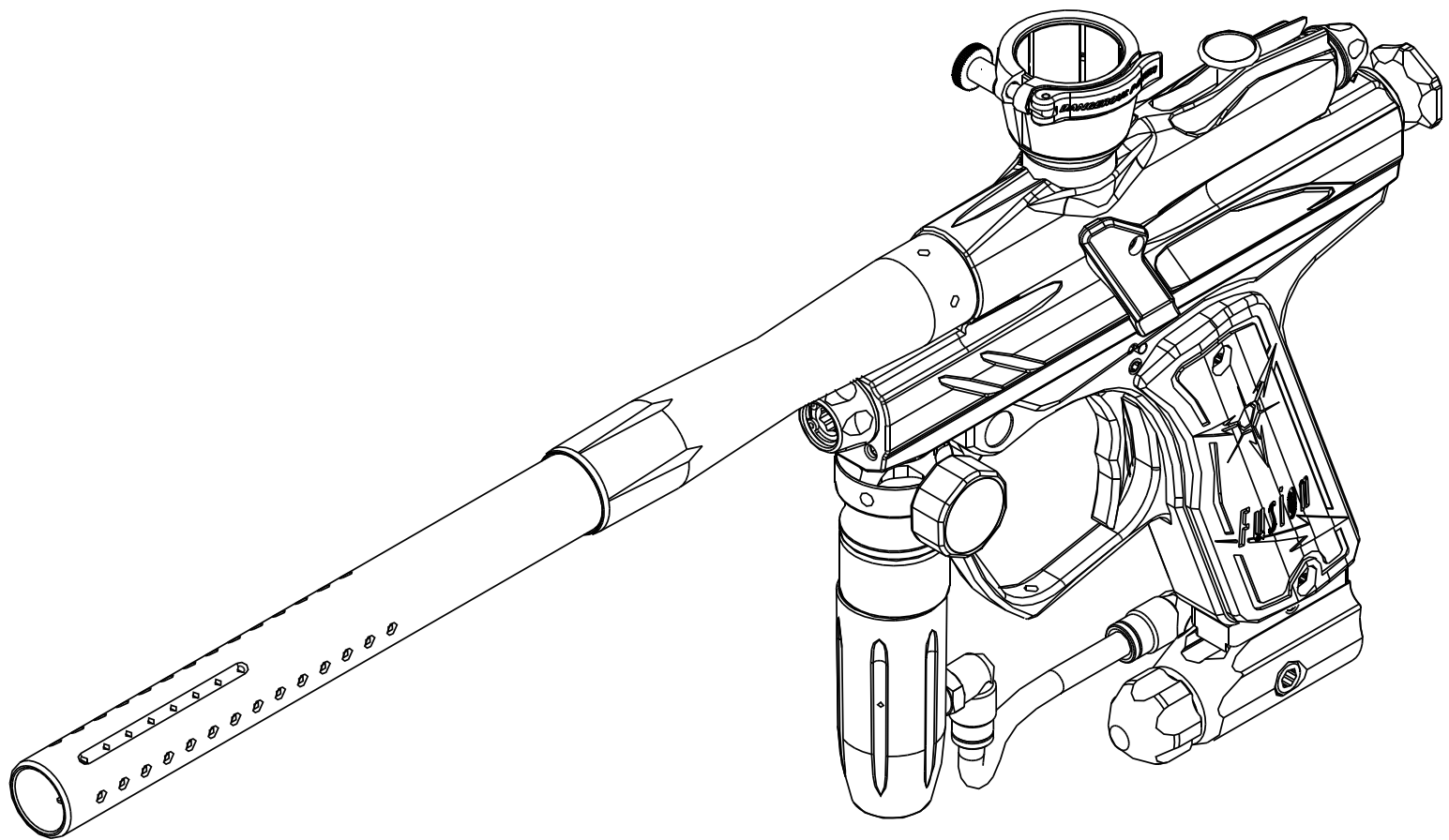


FUSION

USER MANUAL



DANGEROUS POWER
HIGH PERFORMANCE

TABLE OF CONTENT

Table of Content.....	2
Warning.....	3
Pending No.....	3
Statement of Liability.....	3
Disclaimer.....	4
Limited Warranty.....	4
Features.....	5
Inside the Package.....	5
Power Source.....	5
Air Source.....	6
N ² and Compressed Air.....	6
Disconnecting Air System.....	6
Pressure Adjustment.....	7
OPR Adjustment.....	7
LPR Adjustment.....	7
Trigger Adjustment.....	8
LED Interface Operation.....	8
Activation.....	8
Deactivation.....	9
Board Adjustment.....	9
External Maintenance.....	9
Sensor System Maintenance.....	10
Bolt Maintenance.....	10
Striker Maintenance.....	10
Firing Valve Maintenance.....	11
Storage and Transportation.....	11
Troubleshooting.....	12

Version 1.0 5/2006



WARNING

Eye protection must be worn at all times by the user and any person located in the range of an actively used paintball marker. The eye protection gear must be approved and designed for paintball use.

- The Fusion marker is not a toy!
- Misuse or careless use can cause serious injury or death.
- Please read the operation manual and warranty card before using.
- Always use a barrel blocking device.
- Always ensure the marker is not pointed at anyone when it is being handled outside the confines of an actual paintball game and where proper eye protection and equipment are not being used.
- This product is recommended for use for adults 18 years or older. Person under 18 must have adult supervision or use only on paintball fields meeting ASTM standard F1777-97.

PENDING NO

- Operation Pressure Regulator Patent No.:7045726B1
- Rapid Feedneck Pending No.: 11/028640
- Invisible Screw Pending No.: 11/256392
- Reflecting Trigger Sensor Pending No.: 11/354808
- Quick Release Bearing Lock Pending No.:11/255822

STATEMENT OF LIABILITY

The manufacturer assumes no responsibility for this product's resale or safe operation upon distribution. PROPERTY DAMAGE, BODILY INJURY OR DEATH could occur due to misuse, abuse or failure to follow the manufacturer's instructions stated in this manual. The manufacturer will assume no responsibility for physical injury or property damage resulting from the use of this marker.

The information in this document is subject to change without prior notice. The manufacturer assumes no responsibility for any errors that appear in this document.



DISCLAIMER

Notice is hereby given that this owner's manual is part of the article owned in whole by the manufacturer, known as indicated by this disclaimer and all illustrations within the manual. All rights for manufacturing and reproducing of such articles or any part thereof are reserved by the manufacturer. Neither said article nor any part thereof may be manufactured or reproduced in any way except by the written authorization from the manufacturer. All proprietary rights and information are the sole property of the manufacturer.

LIMITED WARRANTY

DANGEROUS POWER™ warrants this Fusion paintball marker, to the initial retail purchaser, to be free from defect in original materials and/or workmanship for twelve (12) months from the original date of purchase with the following exceptions: (a) Disposable parts (batteries, o-rings, seals, micro switch, air pressure hose, rubber and/or plastic material parts, etc.) are not included in this limited warranty. (b) Electronic parts on this marker are fully warranted for 30 days from the original date of purchase. (c) Bolt and striker systems of this marker are fully warranted for 6 months from the original date of purchase. (d) Surface damages (scratches and nicks) or operation failure due to accident, neglect, modification, normal wear, operator error, maintenance by anyone other than an authorized dealer or agent, misuse, improper disassembly and reassembly, and attempts made to drill holes or remove metal from the external surfaces which could reduce the safety and/or performance of this marker are not covered under this limited warranty. Purchaser is responsible for all rendered services not covered under this limited warranty, including any applicable shipping costs, labor, and/or installation. DANGEROUS POWER™ reserves the right to determine the legitimacy of claimed defective original parts and their eligibility for coverage under the terms of this warranty.

DANGEROUS POWER™, its authorized dealers, affiliates, and/or agents, will not be held liable under this warranty, state, federal, or common law for any product failure, personal injury, or property damage resulting from improper use and/or alteration of this product. Any attempt to alter the trigger assembly will instantly void your warranty and may result in serious injury. Any attempt to alter basic marker parts without prior written consent from the manufacturer will result in automatic default of all expressed warranties. Paintball markers are non-refundable and are not subject to exchange from manufacturer.

This limited warranty is non-transferable and is valid only upon presentation of a completed warranty registration card and original proof of purchase. There are no other warranties or guarantees, expressed or implied, made by the manufacturer on this paintball marker.



FEATURES

- ◆ 250 to 300 psi operating pressure
- ◆ Uses N2 or compressed air for air source
- ◆ Air-ram electronic design
- ◆ Cocker compatible barrel thread
- ◆ ACS (anti-chop system) Delrin self-lubricating field-strip bolt
- ◆ Quick-strip bolt / striker system
- ◆ Sensor trigger with 2-step adjusting
- ◆ LED user interface (Semi / ramping)
- ◆ BPS (cap at 20) Sensor
- ◆ Bounce-beam sensor system
- ◆ Blade style trigger for lighter pull
- ◆ Low-rise feedneck
- ◆ 3-D machined body milling
- ◆ Dual regulator system
- ◆ ASA (air system adapter) system and operating pressure gauge

INSIDE THE PACKAGE

- ◆ One Fusion marker
- ◆ 14-inch Cocker thread 0.685 barrel
- ◆ ASA style bottom front handle regulator
- ◆ One low pressure regulator (LPR)
- ◆ One barrel blocking condom
- ◆ User manual
- ◆ Warranty card
- ◆ Tool pack

POWER SOURCE

- ◆ One single 9V battery as power source.
- ◆ Remove the battery from Fusion after each use.
- ◆ Use of a long life alkaline 9V battery is recommended. To replace battery:
 1. Remove the 2 screws located on the right side of grip using the supplied HEX tool and lift the grip up.
 2. Find the battery terminal and install the battery inside the grip frame.
 3. Replace the 2 screws to reinstall the grip.
- ✓ Make sure there that no wires are pinched when putting the grip back.
- ✓ Do not force the wire into crevices; wires should fit easily into allowed space.



DANGEROUS POWER
HIGH PERFORMANCE

AIR SOURCE

- ◆ Fusion will work with N² and compressed air.
- ◆ Before attaching the air system onto Fusion, ensure the bottom line device is in place.
- ◆ Always use the front handle regulator for ensuring the operating pressure is at 250 to 300 psi.
- ◆ Before attaching the air system, put lubrication on the o-ring of the air tank.
- ◆ If there is an on/off switch presented on the air system, shut the air system off before connecting it onto Fusion.
- ◆ It is recommended to maintain the factory stock dual regulator system for optimum performance of Fusion.
- ◆ N² and compressed air can be extremely dangerous if not handle properly or misused. Only use properly certified cylinders.
- ◆ Keep air systems away from open flames or any other potential fire hazards.
- ◆ Always remove the tank from Fusion when not in use.

N² AND COMPRESSED AIR

- ◆ N² and compressed air are recommended for best results with Fusion.
- ◆ The OPR system could be used to utilize the pressure.
- ◆ Pin valve type air system is recommended with the OPR.

DISCONNECTING AIRSYSTEM

Because there might be air left inside of Fusion after using, follow the instructions below to release the pressure within.

1. Disconnect the loader and ensure there are no paintballs inside of Fusion.
2. If there is an on/off switch present on the air system, shut the air system off.
3. Turn off the sensor system.
4. OPR: Turning the adjustment screw clockwise, or in, will lower the OPR's output pressure.
Turning the adjustment screw counterclockwise, or out, will raise the OPR's output pressure.
LPR: Turning the adjustment screw clockwise, or in, will lower the LPR's output pressure.
Turning the adjustment screw counterclockwise, or out, will raise the LPR's output pressure.
5. Dry fire Fusion until there is no air left inside of it.
6. Disconnect the air system.



DANGEROUS POWER
HIGH PERFORMANCE

PRESSURE ADJUSTMENT

- ◆ Before attaching the air system, ensure the air system adapter is in place.
- ◆ OPR: Turning the adjustment screw clockwise, or in, will lower the OPR's output pressure. Turning the adjustment screw counterclockwise, or out, will raise the OPR's output pressure.
- ◆ LPR: Turning the adjustment screw clockwise, or in, will lower the LPR's output pressure. Turning the adjustment screw counterclockwise, or out, will raise the LPR's output pressure.
- ◆ The initial adjustment should be made with no paintballs loaded.
- ◆ When adjusting or operating with low pressure, always check the velocity using chronograph devices.
- ◆ LPR controls the pressure supplied to the solenoid valve when Fusion is fired.
- ◆ Use caution when adjusting, as internal damage may occur to the components or the regulator systems and may void the warranty.

OPR ADJUSTMENT

- ◆ Operating pressure can be adjusted by using the ASA style bottom-line regulator.
- ◆ **DO NOT ADJUST YOUR OPERATING PRESSURE OVER 350 PSI - INTERNAL DAMAGE MAY OCCUR TO THE REGULATOR SYSTEM, SOLENOID VALVE AND MARKER ITSELF.**
- ◆ The suggested operating pressure is between 250 to 300 psi.
- ◆ Turning the adjustment screw clockwise, or in, will lower the OPR's output pressure. Turning the adjustment screw counterclockwise, or out, will raise the OPR's output pressure.
- ◆ Immediately shut off OPR if any leakage is detected.

LPR ADJUSTMENT

- ◆ LPR can be found on the front of Fusion.
- ◆ LPR does not use a pressure gauge to monitor its pressure adjustment.
- ◆ Turning the adjustment screw clockwise, or in, will lower the LPR's output pressure. Turning the adjustment screw counterclockwise, or out, will raise the LPR's output pressure.
- ◆ Once the sound of firing seems right, place a couple of paintballs in Fusion to test the velocity using a chronograph device.
- ◆ Immediately shut off LPR if any leakage is detected.



DANGEROUS POWER
HIGH PERFORMANCE

TRIGGER ADJUSTMENT

- ◆ The two adjustment screws are located on the left side of the frame above the trigger guard.
- ◆ The screw on the top controls the over-travel. By turning this screw you can adjust how far the trigger will travel after it reaches the firing point.
- ◆ The screw below controls the forward travel. Screwing it in will shorten the trigger's length of pull.

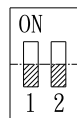
LED INTERFACE OPERATION

- ◆ Before operating the PC board of Fusion, ensure the barrel blocking device is in place.
- ◆ There are 2 operating buttons located on the back.

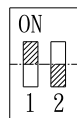
Follow activation instructions for how to read the LED interface:

ACTIVATION

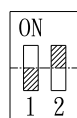
1. To activate Fusion, hold down button "A" for 1.5 seconds. When the red light turns into a blinking blue light, the sensor has been activated.
2. Fusion is ready to be fired once the marker has been loaded and the blue light remains on.
3. Press the button "B" to switch sensor systems.
4. BPS and Ramping System:
Adjust the BPS and Ramping Systems as follows:



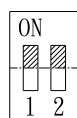
BPS:20
Ramping:OFF



BPS:15
Ramping:OFF



BPS:20
Ramping:ON



BPS:15
Ramping:ON

5. Fusion will turn off automatically after 20 minutes of non-use.
6. Press "A" to manually shut off Fusion.

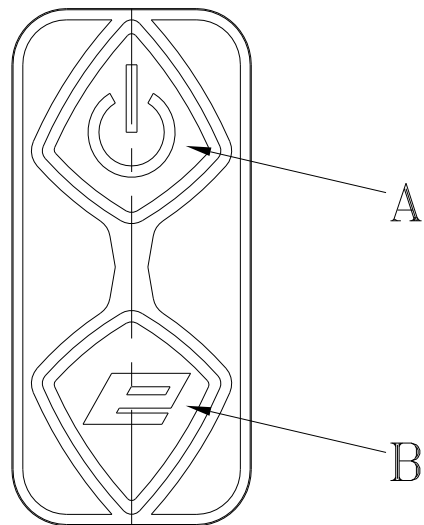
Quick Reference Guide:

- ◆ Red light flashing every 3 seconds Battery power low



DANGEROUS POWER
HIGH PERFORMANCE

- ◆ Red light flashing every 5 seconds Standby mode (automatic after 30 seconds of non-use)
- ◆ Blue light blinking rapidly Sensor system OFF
- ◆ Blue light blinking slowly Sensor system ON and marker NOT loaded
- ◆ Blue light steady Sensor system ON and marker loaded



DEACTIVATION

- ◆ Press and hold the power button “A” for 4 seconds.
- ◆ LED turn off after releasing the hand.

BOARD ADJUSTMENT

Using a HEX tool, remove the 2 screws located on the top and button of grip with the Fusion is pointing to the left.

The 2 adjusting finger switches are located on the top of the PC board.

EXTERNAL MAINTENANCE

- ◆ Most contaminates found on external surfaces can easily be removed with water and a dry clean dump cloth or a few drops of cleaning oil.
- ◆ Other useful supplies for maintaining Fusion are clean rags, Q-tips, and water / rubbing alcohol mix.



SENSOR SYSTEM MAINTENANCE

The sensor system must be kept clean for optimal performance. Please follow the instructions below for cleaning and maintenance:

1. Remove the two screws located on the top and bottom of grip using a HEX tool.
2. Clean the area thoroughly with cotton swab.
3. Replace the sensor system and the cover.
4. Replace the screws back onto the sensor system cover.

BOLT MAINTENANCE

Fusion is equipped with a Delrin fieldstrip bolt for durability and reducing friction.

The bolt must be kept clean for optimal performance.

If the surface of the bolt becomes sticky, please use the following cleaning instructions:

1. Make sure the air system is not attached to Fusion and there is no paintball inside.
 2. Lift up the locking pin on the bolt and remove the bolt from the rear.
 3. Clean the bolt with a clean damp cloth. Soap and warm water may be used to remove any residue.
 4. Lubricate the bolt and the o-ring on it very lightly.
 5. The pin locking system should be gently oiled to ensure proper functioning. Oil very lightly and minimize oil residue on the bolt itself.
 6. Clean the bore of Fusion with a squeegee and ensure there are no remaining contaminants.
- Replace the bolt back to Fusion and check for movement - it should now move freely in the bore.

STRIKER MAINTENANCE

Follow the instructions below to carefully remove the striker assembly for cleaning and maintenance:

1. Disconnect the air system and loader and ensure there is no paintball inside of Fusion.
 2. Lift up the locking pin and turn the cylinder 90 degrees counterclockwise, then pull the striker and main spring.
 3. Place each component carefully and pay attention to their settings.
 4. Pull the striker out from the ram cap and locate the two o-rings on the rear end of sticker.
 - ◆ Lubricate o-rings with gel-type lubricant if necessary.
 - ◆ Replace the o-rings after excessive wear.
 5. Clean the bore of Fusion with a squeegee and ensure there are no remaining contaminants.
 6. Reassemble the components and slip them back in their respective chambers.
- Screw the hose connector back to ram cap and reinstall the striker locking pin in the rear of bolt



FIRING VALVE MAINTENANCE

Follow the below instruction to remove the firing valve assembly carefully for cleaning and maintenance:

1. Remove the ASA (air system adapter) hoses.
2. Remove the two screws located on the top and bottom of grip using a HEX tool.
3. Disassemble the solenoid line and sensor eye system.
4. Remove the two invisible screws using a HEX tool.
5. Separate the body and grip frame.
6. Turn the firing valve screw (found under the body) counterclockwise.
7. Take out the firing valve by using plastic stick (under ϕ 17.5mm).

STORAGE AND TRANSPORTATION

- ◆ Clean and deactivate Fusion. Detach air systems when not in use.
- ◆ Make sure the barrel blocking device is in place when not in use.
- ◆ Keep Fusion away from any unauthorized users.
- ◆ During transportation, Fusion must be detached from air sources.
- ◆ Do not carry Fusion uncased when not on a playing field. Non-playing public and law enforcement personnel may mistake the marker for a firearm.
- ◆ Always carry Fusion in its factory case or a suitable marker case.
- ◆ Never transport Charged N² / compressed air or CO² air systems.

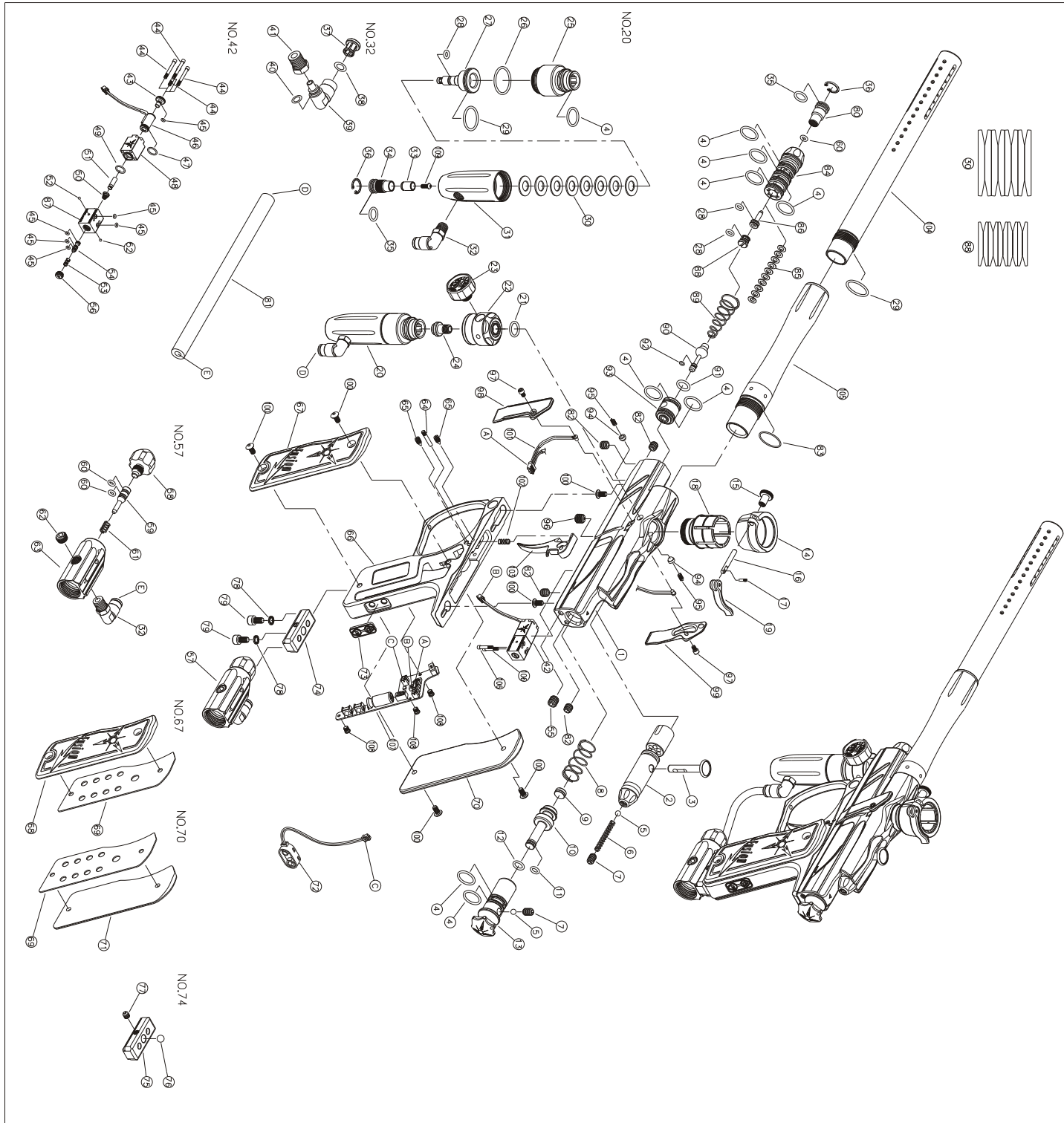


DANGEROUS POWER
HIGH PERFORMANCE

TROUBLESHOOTING

PROBLEM	POSSIBLE CASUE	SOLUTION
Pressure gauge will not move	The pressure used was too hi	Replace the gauge
Fusion will not turn on	Not activated	Hold down operating button for more than 4 seconds
	Low battery power	Change battery
	Battery is connected incorrectly to the PC board	Check to see if the battery cable were connected correctly to the terminal
Fusion will not fire	Low battery power	Change battery
	Low pressure air	Refill the air system
	Solenoid may be out of place	Open grip and press solenoid forward
	LPR pressure is too low	Adjust LPR pressure without paintball present
Fusion will not fire with sensor system on	No paintball present	Turn on the loader
	Sensor system is unclean	See "Sensor System Maintenance"
	Ball detent is damaged	Call the authorized dealers for replacement
	Paintball broke inside	See "Bolt and Sensor System Maintenance"
Air leak from Barrel area	Valve pin is at incorrect position	Remove the LPR. Grease the spring and valve pin
	Valve pin is worn	Replace them
Fusion will not cycle completely	Air pressure is too low	Adjust the operating pressure to 250 to 300 psi
	Low battery power	Change battery
	O-ring of striker is worn	Replace the o-ring
	Striker is worn	Call the authorized dealers for replacement
Breaking paintball when shooting out of the barrel	Barrel size does not match paintball's	The stock barrel size is 0693, change it if necessary
Chopping paintball internally	Ball detent is worn	Call the authorized dealers for replacement
	Sensor system is not on	Switch it to ON
	Low battery power	Change battery



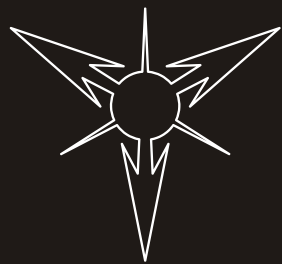


DANGEROUS POWER
HIGH PERFORMANCE

112	20-E02092-000-P031	1	ø1/4"×130L	56	20-H03110-000-PFUS0A	1	
111	20-W10840-000-PFUS0A	3	#3-56UNF-5/32" L	55	20-W10700-000-PFUS0A	1	#10-32UNC-3/16" L
110	20-W23520-000-PFUS0A	1		54	20-H05400-000-PFUS0A	1	
109	20-W10790-000-PFUS0A	2	#3-56UNF-13.5L	53	20-G10220-000-PFUS0A	1	
108	20-B15833-301-PFUS0A	1		52	20-W01080-000-PFUS0A	2	Sø2
107	20-B15822-301-PFUS0A	1		51	20-C20033-000-PFUS0A	1	
106	20-B30364-301-PFUS0A	1		50	20-G10230-000-PFUS0A	1	
105	20-G10270-000-PFUS0A	1		49	20-F01470-000-PFUS0A	1	ø7.5×ø1
104	20-W23500-000-PFUS0A	1		48	20-B20222-303-PFUS0A	1	
103	20-W10730-000-PFUS0A	6	#8-32UNC-5/16" L	47	20-F01480-000-PFUS0A	1	ø6×ø1
102	20-B30374-301-PFUS0A	1		46	20-A06100-000-PFUS0A	1	
101	20-B30354-301-PFUS0A	1		45	20-F01400-000-PXMT0A	6	ø2×ø1
100	20-W10820-000-PFUS0A	2	#5-40UNC-5/16" L	44	20-W10780-000-PFUS0A	4	#3-56UNF-20L
99	20-W10720-000-PFUS0A	1	5/16"-24UNF-5/16" L	43	20-C20040-104-PFUS0A	1	
98	20-G10260-000-PFUS0A	2		42	20-A06110-303-PFUS0A	1	
97	20-D05200-000-PFUS0A	2		41	20-D15142-104-PT00	1	
96	20-H10050-000-PFUS0A	1		40	20-F01350-000-PT00	2	ø5×ø1.5
95	20-F01490-000-PFUS0A	1	ø3×1	39	20-D15232-104-PT00	2	
94	20-F01500-000-PFUS0A	1	ø9×2	38	20-F01340-000-PT00	2	ø5.8×ø1.9
93	20-H05410-000-PFUS0A	1		37	20-D15020-104-PT00	2	
92	20-G01220-000-PFUS0A	1		36	20-W53010-000-PFUS0A	2	
91	20-H05580-000-PFUS0A	1		35	20-F01580-000-PFUS0A	2	ø9.25×ø1.78
90	20-B20202-303-PFUS0A	1		34	20-H05430-000-PFUS0A	1	
89	20-H05570-000-PFUS0A	1		33	20-E01110-000-PFUS0A	1	
88	20-W20100-000-PFUS0A	10		32	20-A01130-104-PT000A	2	1/8" NPT
87	20-B25423-301-PFUS0A	1		31	20-B15803-301-PFUS0A	1	
86	20-F01600-000-PFUS0A	1	ø20×1	30	20-W20090-000-PFUS0A	8	
85	20-W10710-000-PFUS0A	4	#8-32UNC-5/32" L	29	20-F01540-000-PFUS0A	2	ø18.77×ø1.78
84	20-F10070-000-PFUS0A	1		28	20-F01570-000-PFUS0A	3	ø4.47×ø1.78
83	20-H03132-000-PFUS0A	1		27	20-B10132-300-PFUS0A	1	
82	20-W10830-000-PFUS0A	2	#10-32UNF-3/8" L	26	20-F01550-000-PFUS0A	1	ø21.95×ø1.78
81	20-W20110-000-PFUS0A	2		25	20-B25393-301-PFUS0A	1	
80	20-W10600-000-P031	1	M5×6L	24	20-H05440-000-PFUS0A	1	
79	20-W01050-000-PXMT0A	1	ø1/4"	23	20-W30063-000-PFUS0A	1	600psi
78	20-B30324-301-PXMT0A	1		22	20-B25383-301-PFUS0A	1	
77	20-A60100-301-PXMT0A	1		21	20-F01560-000-PFUS0A	1	ø10.82×ø1.78
76	20-F10060-000-PFUS0A	1		20	20-A20190-301-PFUS0A	1	
75	20-W23510-000-PFUS0A	1		19	20-B30384-301-PFUS0A	1	
74	20-E05100-000-PFUS0A	1		18	20-B25413-301-PFUS0A	1	
73	20-A13500-000-PFUS0A	1		17	20-H05560-000-PFUS0A	1	
72	20-C10040-000-PFUS0A	2		16	20-C25020-000-PT00	1	
71	20-E05110-000-PFUS0A	1		15	20-H03120-000-PFUS0A	1	
70	20-A13510-000-PFUS0A	1		14	20-B15814-301-PFUS0A	1	
69	20-B05164-301-PFUS0A	1		13	20-B10124-301-PFUS0A	1	
68	20-W10850-000-PFUS0A	2	#8-32UNC-3/8" L	12	20-F01530-000-PFUS0A	1	ø7.65×1.78
67	20-H05040-000-PB01	1		11	20-F01520-000-PFUS0A	1	ø5.29×1.78
66	20-B30394-301-PFUS0A	1		10	20-H05420-000-PFUS0A	1	
65	20-W63010-000-PFUS0A	2	ø5×2	9	20-E01100-000-PFUS0A	1	
64	20-B25404-301-PFUS0A	1		8	20-G01230-000-PFUS0A	1	
63	20-W10560-000-PM31	1	1/8"-27NPT	7	20-W10860-000-PFUS0A	2	1/4-20UNC-3/8" L
62	20-W10810-000-PFUS0A	1	#3-56UNF-17.5L	6	20-G10240-000-PFUS0A	1	
61	20-G10250-000-PFUS0A	1		5	20-W01030-000-PDM1	2	Sø3/16"
60	20-F01590-000-PFUS0A	3	ø3.69×1.78	4	20-F01510-000-PFUS0A	9	ø14×1.78
59	20-H05590-000-PFUS0A	1		3	20-H05550-000-PFUS0A	1	
58	20-E01130-000-PFUS0A	1		2	20-E20090-000-PFUS0A	1	
57	20-A01200-301-PFUS0A	1		1	20-B01155-301-PFUS0A	1	
NO.	ITEM NUMBER	Q'ty	NOTE	NO.	ITEM NUMBER	Q'ty	NOTE



DANGEROUS POWER
HIGH PERFORMANCE



DANGEROUS POWER
HIGH PERFORMANCE

WWW.DANGEROUSPOWER.COM

Copyright ©2006 Dangerous Power, Co. The "Dangerous Power" logo is registered trademark, trademark, or design trademark of Dangerous Power, Company.