



Model	Satellite L30-115	Satellite A110-133	Satellite A110-110	Satellite M70-340	Satellite P100-257	Satellite P100-264
Processor / Technology	Intel® Celeron® M processor 380 (1.60 GHz, 400 MHz Front Side Bus, 1 MB 2nd level cache)	Intel® Celeron® M processor 410 (1.46 GHz, 533 MHz Front Side Bus, 1 MB 2nd level cache)	Intel® Celeron® M processor 410 (1.46 GHz, 533 MHz Front Side Bus, 1 MB 2nd level cache)	Intel® Centrino® mobile technology including Intel® Pentium® M processor 735A (2 MB Cache, 1.70 GHz, 400 MHz FSB)	Intel® Centrino® Mobile Technology featuring Intel® Core™ Duo Processor T2250 (2 MB Cache, 1.73 GHz, 667 MHz FSB)	Intel® Centrino® Duo Mobile Technology featuring Intel® Core™ Duo Processor T2600 (2 MB Cache, 2.17 GHz, 667 MHz FSB)
Operating system	Microsoft® Windows® XP Home Edition	Microsoft® Windows® XP Home Edition	Microsoft® Windows® XP Home Edition	Microsoft® Windows® XP Home Edition	Microsoft® Windows® XP Media Center Edition	Microsoft® Windows® XP Media Center Edition
Display	14.1" WXGA TFT display, resolution 1,280 x 800	15.4" Toshiba TruBrite® WXGA TFT display, resolution 1,280 x 800	15.4" Toshiba TruBrite® WXGA TFT display, resolution 1,280 x 800	15.4" Toshiba TruBrite® WXGA TFT display, resolution 1,280 x 800	17.0" Toshiba TruBrite® WXGA+ TFT display, resolution 1,440 x 900	17.0" Toshiba TruBrite® WXGA+ TFT display, resolution 1,440 x 900
Hard disk	40 GB (5,400 rpm), Serial ATA	40 GB (5,400 rpm), Serial ATA	60 GB (5,400 rpm), Serial ATA	60 GB (5,400 rpm), Serial ATA	60 GB (5,400 rpm), Serial ATA	100 GB (5,400 rpm), Serial ATA
System memory	256 MB, maximum expandability: 2 GB, technology: DDR2 RAM (533 MHz)	256 MB, maximum expandability: 2 GB, technology: DDR2 RAM (533 MHz)	512 MB, maximum expandability: 2 GB, technology: DDR2 RAM (533 MHz)	512 MB, maximum expandability: 2 GB, technology: DDR2 RAM	512 MB, maximum expandability: 4 GB, technology: DDR2 RAM	1,024 (512 + 512) MB, maximum expandability: 4 GB, technology: DDR2 RAM
Optical device	CD-RW/DVD-ROM drive	DVD Super Multi (Double Layer) drive	DVD Super Multi (Double Layer) drive	DVD Super Multi (Double Layer) drive	DVD Super Multi (Double Layer) drive	DVD Super Multi (Double Layer) drive
Graphics adapter	ATI Radeon® Xpress 200M, up to 256 MB VRAM	ATI Radeon® Xpress 200M, up to 256 MB VRAM	ATI Radeon® Xpress 200M, up to 256 MB VRAM	Intel® 915 GM Express chipset with Intel® Graphics Media Accelerator 900, up to 128 MB VRAM	Intel® 945GM Express chipset with Intel® Graphics Media Accelerator 950, up to 128 MB VRAM	NVIDIA® GeForce™ Go 7600, 256 MB DDR2 RAM, 16x PCI Express
Pointing device	Touch Pad	Touch Pad	Touch Pad	Touch Pad	Touch Pad	Touch Pad
Wired & wireless communication	Ethernet LAN, international V.90 modem (V.92 ready); Wireless LAN (802.11b/g)	Ethernet LAN, international V.90 modem (V.92 ready)	Ethernet LAN, international V.90 modem (V.92 ready); Wireless LAN (802.11b/g)	Ethernet LAN, international V.90 modem (V.92 ready); Wireless LAN (802.11b/g)	Ethernet LAN, international V.90 modem (V.92 ready); Wireless LAN (802.11a/b/g), Bluetooth® 2.0	Gigabit Ethernet LAN, international V.90 modem (V.92 ready); Wireless LAN (802.11a/b/g), Bluetooth® 2.0
Sound system	Toshiba Bass Enhanced Sound System, built-in stereo speakers	Toshiba Bass Enhanced Sound System, built-in stereo speakers	Toshiba Bass Enhanced Sound System, built-in stereo speakers	Toshiba Bass Enhanced Sound System with SRS® TruSurround XT™ System, built-in Harman Kardon® stereo speakers, volume dial	Toshiba Bass Enhanced Sound System with SRS® TruSurround XT™ System, built-in Harman Kardon® stereo speakers, volume-dial	Toshiba Bass Enhanced Sound System with SRS® TruSurround XT™ System, built-in Harman Kardon® stereo speakers, volume-dial
Interfaces	DC-in, external monitor, external microphone, RJ-11, RJ-45, 3 x USB 2.0, headphone	DC-in, external monitor, external microphone, RJ-11, RJ-45, 3 x USB 2.0, i.LINK® (IEEE1394), headphone (stereo), TV-out (S-Video)	DC-in, external monitor, external microphone, RJ-11, RJ-45, 3 x USB 2.0, i.LINK® (IEEE1394), headphone (stereo), TV-out (S-Video)	5-in-1 Bridge Media slot (support SD™ Card, Memory Stick®, Memory Stick Pro®, MultiMedia Card™, xD-Picture Card™), DC-in, external microphone, external monitor, external microphone, RJ-11, RJ-45, 3 x USB 2.0, i.LINK® (IEEE1394), TV-out (S-Video)	5-in-1 Bridge Media slot (supports SD™ Card, Memory Stick®, Memory Stick Pro®, MultiMedia Card™, xD-Picture Card™), DC-in, external microphone, external monitor, headphone (stereo), RJ-11, RJ-45, 4 x USB 2.0, line-in, i.LINK® (IEEE1394), TV-out (S-Video)	5-in-1 Bridge Media slot (supports SD™ Card, Memory Stick®, Memory Stick Pro®, MultiMedia Card™, xD-Picture Card™), DC-in, external microphone, external monitor, headphones, RJ-11, RJ-45, 4 x USB 2.0, line-in, i.LINK® (IEEE1394), TV-out (S-Video), SP/DIF (optical) shared with headphone socket, DVI-out
Expansion	PC Card slot for 1 x Type II card, 2 x memory slots	PC Card slot for 1 x Type II card, 2 x memory slots	PC Card slot for 1 x Type II card, 2 x memory slots	PC Card slot for 1 x Type II card, 2 x memory slots	PC Card slot for 1 x Type II card, 2 x memory slots, ExpressCard™ slot	PC Card slot for 1 x Type II card, 2 x memory slots, ExpressCard™ slot
Battery	Technology: lithium-ion, maximum life up to 1:35 (Mobile Mark™) hours	Technology: lithium-ion, maximum life up to 1:41 (Mobile Mark™) hours	Technology: lithium-ion, maximum life up to 1:41 (Mobile Mark™) hours	Technology: lithium-ion, maximum life up to 4:32 (Mobile Mark™) hours	Technology: lithium-ion, maximum life up to 3:30 (Mobile Mark™) hours	Technology: lithium-ion, maximum life up to 2:17 (Mobile Mark™) hours
Bundled software	Microsoft® Office OneNote™ 2003, online user and modem manual, Toshiba ConfigFree™, Connectivity Doctor, Toshiba Summit, Toshiba Disc Creator, Toshiba Zooming Utility, Norton Internet Security™ 2006 (includes free Internet updates for 90 days), Toshiba utilities and drivers	Microsoft® Office OneNote™ 2003, online user and modem manual, Toshiba ConfigFree™, Connectivity Doctor, Toshiba Summit, InterVideo® WinDVD, InterVideo® WinDVD Creator 2 Platinum, Windows® Movie Maker 2.1, Toshiba Disc Creator, Norton Internet Security™ 2006 (includes free Internet updates for 90 days), Toshiba Zooming Utility, Toshiba utilities and drivers	Microsoft® Office OneNote™ 2003, online user and modem manual, Management Console, Toshiba ConfigFree™, Connectivity Doctor, Toshiba Summit, Sonic™ Record Now!, InterVideo® WinDVD, InterVideo® WinDVD Creator 2 Platinum, Norton Internet Security™ (includes free Internet updates for 90 days), Toshiba utilities and drivers	Microsoft® Office OneNote™ 2003, online user and modem manual, Management Console, Toshiba ConfigFree™, Connectivity Doctor, Toshiba Summit, Sonic™ Record Now!, InterVideo® WinDVD, InterVideo® WinDVD Creator 2 Platinum, Norton Internet Security™ (includes free Internet updates for 90 days), Toshiba utilities and drivers	Microsoft® Office OneNote™ 2003, online user and modem manual, Toshiba ConfigFree™, Connectivity Doctor, Toshiba Summit, Sonic™ Record Now!, InterVideo® WinDVD Creator 2 Platinum, Norton Internet Security™ (includes free Internet updates for 90 days), Toshiba utilities and drivers	Microsoft® Office OneNote™ 2003, online user and modem manual, Toshiba ConfigFree™, Connectivity Doctor, Toshiba Summit, Sonic™ Record Now!, InterVideo® WinDVD Creator 2 Platinum, Norton Internet Security™ (includes free Internet updates for 90 days), Toshiba utilities and drivers
Bundled hardware	AC adapter, 23-in-1 Card reader	AC adapter	AC adapter	AC adapter	AC adapter	AC adapter
Special features	SM BIOS compliant, HD Audio supporting	SM BIOS compliant, HD Audio supporting, Toshiba Power Saver utility	SM BIOS compliant, HD Audio supporting, Toshiba Power Saver utility	Multimedia Bar with 6 Easy Keys (Internet Browser, CD-Control, Rewind, Play, Stop, Forward)	Multimedia Bar with 6 Easy Keys (Internet Browser, Rewind, Play, Stop, Forward, CD/DVD launcher), HD Audio supporting, Toshiba Zooming Utility, HD to go – mobile High Definition viewing, integrated numeric keyboard	Multimedia Bar with 6 Easy Keys (Internet Browser, Rewind, Play, Stop, Forward, Express Media Player for instant-on entertainment), HD Audio supporting, Toshiba Zooming Utility, HD to go – mobile High Definition viewing, integrated numeric keyboard
Security features	User password, keyboard lock, main hard disk (by screw), main battery pack (by sliding latch), main memory (by screw), supervisor password, wireless LAN switch, system password security, Kensington cable lock	User password, keyboard lock, main hard disk (by screw), main battery pack (by sliding latch), main memory (by screw), supervisor password, wireless LAN switch, system password security, Kensington cable lock	User password, keyboard lock, main hard disk (by screw), main memory (by screw), supervisor password, wireless LAN switch, system password security, Kensington cable lock	BIOS password, HDD password on request, keyboard lock, main hard disk (by screw), main memory (by screw), slot for Kensington Cable Lock, supervisor password, system password security, user password, Wireless LAN switch	BIOS password, keyboard lock, main hard disk (by screw), main memory (by screw), slot for Kensington Cable Lock, system password security, Wireless LAN switch	BIOS password, keyboard lock, main hard disk (by screw), main memory (by screw), slot for Kensington Cable Lock, system password security, Wireless LAN switch
Physical dimensions	W x L x H: 358 x 262 x 37 mm, weight: 2.74 kg	W x L x H: 360 x 263 x 38.5 mm, weight: 2.71 kg	W x L x H: 360 x 263 x 38.5 mm, weight: 2.71 kg	W x L x H: 360 x 263 x 38.5 mm, weight: 2.71 kg	W x L x H: 394 x 275 x 35.9 (front) / 41.9 (back) mm, weight: 3.2 kg	W x L x H: 331 x 278 x 28.5 (front) / 35.8 (back) mm, weight: 2.6 kg
Warranty	1-year international warranty.	1-year international warranty.	1-year international warranty.	1-year international warranty.	2-year international warranty.	2-year international warranty.



Model	Satellite Pro L100-132	Satellite Pro A100-244	Satellite Pro A100-247	Satellite Pro A100-242
Processor / Technology	Intel® Celeron® M processor 380 (1.60 GHz, 400 MHz Front Side Bus, 1 MB 2nd level cache)	Intel® Centrino® Duo Mobile Technology featuring Intel® Core™ Duo Processor T2400 (2 MB Cache, 1.83 GHz, 667 MHz FSB)	Intel® Centrino® Duo Mobile Technology featuring Intel® Core™ Duo Processor T2500 (2 MB Cache, 2.00 GHz, 667 MHz FSB)	Intel® Centrino® Duo Mobile Technology featuring Intel® Core™ Duo Processor T2600 (2 MB Cache, 2.17 GHz, 667 MHz FSB)
Operating system	Microsoft® Windows® XP Professional	Microsoft® Windows® XP Professional	Microsoft® Windows® XP Professional	Microsoft® Windows® XP Professional
Display	15.0" XGA TFT display, resolution 1,024 x 768	15.4" Toshiba TruBrite® WXGA TFT display, resolution 1,280 x 800	15.4" Toshiba TruBrite® WXGA TFT display, resolution 1,280 x 800	15.4" Toshiba TruBrite® WXGA TFT display, resolution 1,280 x 800
Hard disk	60 GB (5,400 rpm), Serial ATA	60 GB (5,400 rpm), Serial ATA	80 GB (5,400 rpm), Serial ATA	100 GB (5,400 rpm), Serial ATA
System memory	512 MB, maximum expandability: 4 GB, technology: DDR2 RAM	512 MB, maximum expandability: 4 GB, technology: DDR2 RAM (533 MHz)	512 MB, maximum expandability: 4 GB, technology: DDR2 RAM (533 MHz)	512 MB, maximum expandability: 4 GB, technology: DDR2 RAM (533 MHz)
Optical device	DVD Super Multi (Double Layer) drive	DVD Super Multi (Double Layer) drive	DVD Super Multi (Double Layer) drive	DVD Super Multi (Double Layer) drive
Graphics adapter	ATI Radeon® Xpress 200M, up to 128 MB VRAM	ATI Mobility™ Radeon® X1400 512 MB HyperMemory™, 256 MB VRAM + up to 256 MB DDR2 RAM (system memory)	ATI Mobility™ Radeon® X1400 512 MB HyperMemory™, 256 MB VRAM + up to 256 MB DDR2 RAM (system memory)	ATI Mobility™ Radeon® X1400 512 MB HyperMemory™, 256 MB VRAM + up to 256 MB DDR2 RAM (system memory)
Pointing device	Touch Pad	Touch Pad	Touch Pad	Touch Pad
Wired & wireless communication	Ethernet LAN, international V.90 modem (V.92 ready); Wireless LAN (802.11b/g)	Ethernet LAN, international V.90 modem (V.92 ready); Wireless LAN (802.11a/b/g), Bluetooth® 2.0 with EDR (Enhanced Data Rate)	Ethernet LAN, international V.90 modem (V.92 ready); Wireless LAN (802.11a/b/g), Bluetooth® 2.0 with EDR (Enhanced Data Rate)	Ethernet LAN, international V.90 modem (V.92 ready); Wireless LAN (802.11a/b/g), Bluetooth® 2.0 with EDR (Enhanced Data Rate)
Sound system	Toshiba Bass Enhanced Sound System, built-in stereo speakers	Toshiba Bass Enhanced Sound System with SRS® TruSurround XT™ System and SRS® WOW, built-in Harman Kardon® stereo speakers, volume dial	Toshiba Bass Enhanced Sound System with SRS® TruSurround XT™ System and SRS® WOW, built-in Harman Kardon® stereo speakers, volume dial	Toshiba Bass Enhanced Sound System with SRS® TruSurround XT™ System and SRS® WOW, built-in Harman Kardon® stereo speakers, volume dial
Interfaces	DC-in, external microphone, external monitor, headphones, RJ-11, RJ-45, 4 x USB 2.0, TV-out (S-Video)	5-in-1 Bridge Media slot (supports SD™ Card, Memory Stick®, Memory Stick Pro®, MultiMedia Card™, xD-Picture Card™), DC-in, external monitor, external microphone, RJ-11, RJ-45, 4 x USB 2.0, TV-out (S-Video)	5-in-1 Bridge Media slot (supports SD™ Card, Memory Stick®, Memory Stick Pro®, MultiMedia Card™, xD-Picture Card™), DC-in, external monitor, external microphone, RJ-11, RJ-45, 4 x USB 2.0, TV-out (S-Video)	5-in-1 Bridge Media slot (supports SD™ Card, Memory Stick®, Memory Stick Pro®, MultiMedia Card™, xD-Picture Card™), DC-in, external monitor, external microphone, RJ-11, RJ-45, 4 x USB 2.0, TV-out (S-Video)
Expansion	PC Card slot for 1 x Type II card, 2 x memory slots	PC Card slot for 1 x Type II card, 2 x memory slots	PC Card slot for 1 x Type II card, 2 x memory slots	PC Card slot for 1 x Type II card, 2 x memory slots
Battery	Technology: lithium-ion, maximum life up to 1:50 (Mobile Mark™) hours	Technology: lithium-ion, maximum life up to 1:40 (Mobile Mark™) hours	Technology: lithium-ion, maximum life up to 1:40 (Mobile Mark™) hours	Technology: lithium-ion, maximum life up to 1:40 (Mobile Mark™) hours
Bundled software	Microsoft® Office OneNote™ 2003, online user and modem manual, Toshiba ConfigFree™, Connectivity Doctor, Sonic™ Record Now!, InterVideo® WinDVD, InterVideo® WinDVD Creator 2 Platinum, Norton Internet Security™ 2006 (includes free Internet updates for 90 days), Toshiba utilities and drivers	Microsoft® Office OneNote™ 2003, online user and modem manual, Management Console, Toshiba ConfigFree™, Connectivity Doctor, Toshiba Summit, Sonic™ Record Now!, InterVideo® WinDVD, InterVideo® WinDVD Creator 2 Platinum, Norton Internet Security™ 2006 (includes free Internet updates for 90 days), Toshiba utilities and drivers	Microsoft® Office OneNote™ 2003, online user and modem manual, Management Console, Toshiba ConfigFree™, Connectivity Doctor, Toshiba Summit, Sonic™ Record Now!, InterVideo® WinDVD, InterVideo® WinDVD Creator 2 Platinum, Norton Internet Security™ 2006 (includes free Internet updates for 90 days), Toshiba utilities and drivers	Microsoft® Office OneNote™ 2003, online user and modem manual, Management Console, Toshiba ConfigFree™, Connectivity Doctor, Toshiba Summit, Sonic™ Record Now!, InterVideo® WinDVD, InterVideo® WinDVD Creator 2 Platinum, Norton Internet Security™ 2006 (includes free Internet updates for 90 days), Toshiba utilities and drivers
Bundled hardware	AC adapter	AC adapter	AC adapter	AC adapter
Special features	Toshiba Zooming Utility, Multimedia Bar with 4 Easy Keys (Forward, Rewind, Play/Pause, Stop)	SM BIOS compliant, HD Audio supporting, spill-resistant keyboard, Multimedia Bar with 6 Easy Keys (Internet Browser, Rewind, Play, Stop, Forward, CD/DVD launcher), Toshiba Zooming utility, HD to go – mobile High Definition viewing	SM BIOS compliant, HD Audio supporting, spill-resistant keyboard, Multimedia Bar with 6 Easy Keys (Internet Browser, Rewind, Play, Stop, Forward, CD/DVD launcher), Toshiba Zooming utility, HD to go – mobile High Definition viewing	SM BIOS compliant, HD Audio supporting, spill-resistant keyboard, Multimedia Bar with 6 Easy Keys (Internet Browser, Rewind, Play, Stop, Forward, CD/DVD launcher), Toshiba Zooming utility, HD to go – mobile High Definition viewing
Security features	BIOS password, supervisor password, keyboard lock, main hard disk (by screw), main memory (by screw), main battery pack (by sliding latch), slot for Kensington Cable Lock, system password security, Wireless LAN switch	BIOS password, keyboard lock, main hard disk (by screw), main memory (by screw), system password security, wireless LAN switch, Kensington cable lock	BIOS password, keyboard lock, main hard disk (by screw), main memory (by screw), system password security, wireless LAN switch, Kensington cable lock	BIOS password, keyboard lock, main hard disk (by screw), main memory (by screw), system password security, wireless LAN switch, Kensington cable lock
Physical dimensions	W x L x H: 331 x 278 x 28.5 (front) / 35.8 (back) mm, weight: 2.6 kg	W x L x H: 360 x 267 x 29.8 (front) / 36.8 (back) mm, weight: 2.72 kg	W x L x H: 360 x 267 x 29.8 (front) / 36.8 (back) mm, weight: 2.72 kg	W x L x H: 360 x 267 x 29.8 (front) / 36.8 (back) mm, weight: 2.72 kg
Warranty	2-year international warranty.	2-year international warranty.	2-year international warranty.	2-year international warranty.



AC Adapter



Battery – Li-Ion, 6 Cell, 4,400 mAh



USB optical scroll wheel mouse



Notebook car adapter



USB 2.0 Port Replicator II (EU) with Network port



17" XXL Case



Backpack



Leather Case



Carry Case – Value Edition



Kensington Micro Saver



International Warranty Extension

CPU performance may vary from specifications under certain conditions such as the use of battery instead of AC power, certain external peripherals, certain multimedia applications or network connections, complex modeling software and in areas with low air pressure at high altitude (1,000 metres above sea level) and/or certain temperatures. CPU performance may also vary from specifications due to design configuration. Under some conditions, your computer may automatically shut down as a normal protective measure. To avoid risk of lost data, please make periodic back-up copies. For optimum performance, use your computer only under recommended conditions. Please read detailed restrictions in the product resource guide, visit the Toshiba web site: computers.toshiba-europe.com and/or contact Toshiba Technical Support. • One GB means 1,024 MB. Available capacity may be less. • Wired and wireless communication capabilities to be applied in countries where approved. • Battery life may vary depending on applications, power management settings and features utilized. Recharge time varies depending on the battery. • Battery life may vary depending on applications, power management settings and features utilized. • Small bright dots may appear on your TFT display when you turn on your PC. • Your display contains an extremely large number of thin-film transistors (TFT) and is manufactured using high-precision technology. • Weight may vary depending on product configuration, vendor components, manufacturing variability and options selected. • SRS® TruSurround XT™ is only available for WinDVD applications. SRS® WOW™ is only available for Windows Media Player 9 in standard Windows interface. Please check your system specifications to ensure optimal results. • Microsoft® Office OneNote™ 2003 is not available in all countries. Wi-Fi and/or Bluetooth® to be applied in countries where approved. For further information contact your Toshiba Authorised Reseller. • Certain notebook chassis are designed to accommodate all possible configurations for an entire product series. Your selected model may not have all the features and specifications corresponding to all of the icons or switches shown on the notebook chassis. • Not all Windows Vista features are available for use on all Windows Vista Capable PCs. Check: www.windowsvista.com/getready for details.

PRODUCT GUIDE

See inside for the Toshiba range of mobile solutions and options.

July 2006



TEG July 2006; Art: No. EN-ZA_NG_ProductGuide_Jul06. Microsoft, Windows and Windows Vista are either registered trademarks or trademarks of Microsoft Corporation in the United States and/or other countries. All trademarks are acknowledged. Product design specifications and colours are subject to change without notice and may vary from those shown. Errors and omissions excepted. iLlINK and the 3-Bar logo are registered trade marks of the iLlINK Group, used with permission. Haragist is a trade mark of the iLlINK Group, used with permission.

Toshiba is the best choice for advanced mobile computing.

Toshiba's unique heritage has grown from a single-minded dedication to these core brand values. Together, they have provided the building blocks for true product leadership over the past 20 years and will continue to drive Toshiba's vision of the ubiquitous networked society for years to come.

Best-in-class quality Unsurpassed innovation Trend-setting design

Toshiba sets the standard for delivering reliable, high-quality products. After 20 years of leadership in mobile computing, Toshiba offers unrivalled manufacturing experience and in-depth product knowledge, enabling customers to choose Toshiba with complete confidence. Our component testing programmes incorporate the most stringent quality control checks. Toshiba's commitment to quality also extends to impeccable customer service and long-term product support.

Toshiba's success is anchored by a proven ability to develop cutting-edge technologies. Systems developed by Toshiba lie at the heart of many notebooks on the market today. Over the past 20 years, industry breakthroughs have included the first notebook to feature onboard wireless connectivity and the development of the lithium-ion battery. More recent Toshiba innovations are revolutionising digital convergence. Unprecedented R&D investment will ensure advances for years to come.

Toshiba has a long heritage of delivering award-winning design. All Toshiba systems are created by in-house designers and Toshiba products regularly win prestigious international design and technology awards. Everything we do is about combining style with maximum functionality. User-friendly features combine effortlessly with ultra-lightweight cases and compact dimensions. These are status symbol notebooks, a pleasure to own and to be seen with.

Dealer stamp

Go online at:
computers.toshiba-europe.com

Find out more:
For further information please contact your nearest Toshiba Authorised Reseller.

Go online at:
computers.toshiba-europe.com

Find out more:
For further information please contact your nearest Toshiba Authorised Reseller.

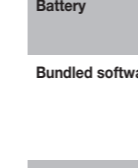
Model	Qosmio G30-153
Processor / Technology	Intel® Centrino® Duo Mobile Technology featuring Intel® Core™ Duo Processor T2600 (2 MB Cache, 2.17 GHz, 667 MHz FSB)
Operating system	Microsoft® Windows® XP Media Center Edition 2005
Display	17" Toshiba TruBrite® WUXGA TFT display, resolution: 1,920 x 1,200
Hard disk	240 (120 + 120) GB (5,400 rpm), Serial ATA, with RAID support
System memory	2 GB (1 GB + 1 GB), maximum expandability: 4 GB, technology: DDR2 RAM
Optical device	HD DVD-ROM drive (including DVD Super Multi (Double Layer) drive support)
Graphics adapter	NVIDIA® GeForce™ Go 7600, 256 MB DDR2 RAM, 16x PCI Express
TV tuner	Built-in hybrid analogue and digital (DVB-T) TV Tuner
Pointing device	Touch Pad
Wired & wireless communication	Gigabit Ethernet LAN, international V.90 modem (V.92 ready); Wireless LAN (802.11a/b/g), Bluetooth® 2.0 + EDR
Sound system	Toshiba Bass Enhanced Sound System with 1-bit Digital Amplifier and Dolby® Home Theater™, built-in Harman Kardon® stereo speakers, volume dial
Interfaces	6-in-1 Bridge Media slot (supports SD™ Card, Memory Stick®, Memory Stick Pro®, MultiMedia Card™, xD-Picture Card™, SD™ IO), DC-in, external microphone, external monitor, headphone (stereo), RJ-11, RJ-45, 4 x USB 2.0, Monitor-in (line-in port), TV antenna, S-Video-in (Composite/Line-in), TV-out (S-Video, Component-out), iLINK® (IEEE1394), SP/DIF (optical shared with headphone socket, HDMI-out)
Expansion	1 x PC Card Type II, 2 x memory slots, Express Card™ slot
Battery	Technology: lithium-ion, maximum life up to 2:50 (Mobile Mark™) hours
Bundled software	Microsoft® Office OneNote™ 2003, online user manual, Toshiba ConfigFree™, Connectivity Doctor, Toshiba Summit, Sonic™ Record Now!, InterVideo® WinDVD Creator 2 Platinum, Norton Internet Security™ (includes free Internet updates for 90 days), Windows® Movie Maker 2, WinDVD™, Toshiba utilities and drivers
Bundled hardware	AC adapter, HDMI cable, antenna cable, Remote Control for Microsoft® Windows® Media Center Edition and QosmioPlayer, Monitor-in cable, modem cable, S-Video cable
Special features	AV buttons (QosmioPlayer TV button, QosmioPlayer CD/DVD button, Play/Pause, Stop, Rewind, Forward, Record, Brightness, Dolby, TV-out), QosmioEngine for advanced video experience, QosmioPlayer for instant-on entertainment, RAID0 and RAID1 support for data back-up and real-time disk mirroring, HD to go – mobile High Definition viewing
Security features	Keyboard lock, main hard disk (by screw), main memory (by screw), main battery pack (by sliding latch), slot for Kensington Cable Lock, supervisor password, system password security, user password, Wireless LAN switch
Physical dimensions	W x L x H: 406 x 285 x 45.5 (front) / 53.3 (back) mm, weight: 4.8 kg
Warranty	2-year international warranty.

QOSMIO G30
Qosmio – The world's smartest entertainer.

- Qosmio brings together high-quality TV, HD DVD playback, superlative audio and powerful mobile computing to create the perfect 4-in-1 digital entertainment system
- Thrill to personalised entertainment with the breakthrough performance of Intel® Centrino® Duo mobile technology and dual HDDs with RAID support for a choice of more storage capacity or real-time hard disk mirroring for increased data security
- Experience immersive graphics courtesy of Toshiba's innovative video system, the QosmioEngine, and the NVIDIA® GeForce™ 7600 graphics processor
- Share the best in mobile TV and entertainment thanks to the built-in TV tuner with analogue and digital support, the brilliant 17" Toshiba TruBrite® display and the integrated HD DVD-ROM player for a breakthrough cinematic experience
- Be amazed by the rich, powerful listening experience enabled by the 1-bit digital amplifier for high-fidelity audio, plus Dolby® Home Theater™ surround sound and Harman Kardon® stereo speakers with bass-reflex speaker technology
- Enjoy the all-in-one convenience of instant digital entertainment with Toshiba's exclusive QosmioPlayer, AV control buttons, Microsoft® Windows® Media Center Edition (MCE) and MCE remote control



Now with HD DVD player



17" widescreen multimedia

SATELLITE P100
Enjoy video and audio performance at its best.

- Offers impressive performance with powerful Intel® Centrino® Duo mobile technology and support for up to 4 GB memory
- Enjoy superlative multimedia and digital entertainment on the widescreen 17-inch Toshiba TruBrite® WXGA+ display, plus latest NVIDIA® GeForce Go graphics chipset*, HD to go for high-definition content viewing and DVI-D port to display HD digital content on an external monitor
- Experience exciting enhancements for music and entertainment with SRS® surround sound technology backed by Harman Kardon® stereo speakers
- Choose a powerful multimedia experience in an elegant, dynamic sunlight-copper design, featuring an integrated numeric keypad for convenient number input
- Get all the connections you need with Gigabit Ethernet* for 10 times the speed of Fast Ethernet, Wireless LAN, Bluetooth® 2.0 with EDR, a 5-in-1 Bridge Media adapter, fast PCI Express Card slot and more * on selected models

Spill-resistant keyboard

SATELLITE PRO A100
Versatile performance for today's digital lifestyle.

- Powered by the new Intel® Centrino® mobile technology, featuring Intel® Core™ Duo processor for thrilling personalised entertainment on the move
- Experience astonishing video entertainment with a 15.4" WXGA widescreen TFT display, Toshiba TruBrite® technology for a crystal-clear viewing experience and the latest ATI graphics*
- Enhanced productivity is yours with bundled Microsoft® Office OneNote™ 2003 for intuitive information management and Toshiba ConfigFree™ for easy management of wired and wireless network connections
- Advanced system protection thanks to a spill-resistant keyboard which gives users enough time to save their data and shutdown their notebook in the event of an accidental spill
- Benefit from a wide range of smart connection and expansion options including PC Card slots, iLINK®, 4 x USB ports, a TV-out port and Wireless LAN* * on selected models

15.4" widescreen display

SATELLITE A110
Widescreen performance at an exceptional value.

- Delivers high-performance mobility in a stylish design featuring a 15.4" WXGA Toshiba TruBrite® display for a crystal-clear picture
- Powered by Intel® Centrino® mobile technology, featuring an Intel® Celeron® M processor
- Features enhanced multimedia performance courtesy of the ATI Radeon® Xpress 200M chipset
- Enjoy all-in-one convenience with Toshiba's ConfigFree™ for easy management of wireless and wired network connectivity and Microsoft® Office OneNote™ 2003 for intuitive information management
- Offers state-of-the-art connectivity and a broad range of expansion options, including Wireless LAN, iLINK®, TV-out (S-video) and 3 USB ports

ConfigFree™ for easy connectivity

SATELLITE L30
Discover a world of easy mobility.

- Enter the world of mobile computing with a notebook featuring pure, modern design plus a 14" WXGA widescreen display
- Powered by an Intel® Celeron® M processor for the perfect balance between proven mobile processing technology and exceptional value
- Work and play anywhere, anytime with bundled Microsoft® Windows XP Home Edition for your daily computing needs and Microsoft OneNote® Office 2003 for intuitive information management
- Enjoy mobile multimedia and watch DVDs on the go or record your music collection on CD with the built-in CD-RW/DVD-ROM drive
- Benefit from extended connectivity with Wireless LAN*, Ethernet LAN, V.90 modem (V.92 ready) and Toshiba ConfigFree™ for easy management of wired and wireless network connections



Weighing from just 2.6 kg

SATELLITE PRO L100
All the performance you need at an affordable price.

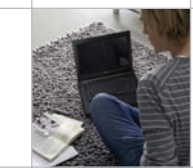
- Enjoy a sleek performance notebook powered by Intel® Centrino® mobile technology, featuring an Intel® Celeron® M processor
- Get enhanced video performance thanks to ATI Radeon® Xpress 200M
- Experience amazing multimedia on the move courtesy of a 15" XGA TFT display, a DVD Super Multi Drive for up to 8.5 GB of data and a dedicated Multimedia Bar for convenient one-touch CD/DVD/MP3 playback
- Gives you all-in-one convenience with Microsoft® Windows® XP Professional, Toshiba ConfigFree™ software for simplified connectivity and Microsoft® Office OneNote™ 2003 for effective digital note-taking
- Get extended connectivity with Wireless LAN, V.90 modem (V.92 ready), Ethernet LAN, 4 USB ports and 1 PC Card slot

SATELLITE M70
The stylish widescreen performer.

- Ideal for the image-conscious home or business user who values superb widescreen performance, this stylish notebook features a 15.4" WXGA Toshiba TruBrite® display for a crystal-clear picture
- Seamless mobility with Intel® Centrino® mobile technology plus Microsoft® Office OneNote™ 2003 for intuitive information management and Toshiba ConfigFree™ for easy management of wireless and wired network connectivity
- Enjoy a rich, powerful audio experience thanks to SRS® TruSurround XT™ technology
- Offers state-of-the-art connectivity and a broad range of expansion options, including Wireless LAN, iLINK®, TV-out (S-video) and 5-in-1 Bridge Media slot



15.4" widescreen display



HD to go