

iSAFE Technology Inc.

Digital Video Recorders

User's Manual

Models: *ISD-204*



Before attempt to connect or operate this product,
please read these instructions carefully and save this manual for future use.

DM-DVR-ISD-204

CAUTION

**TO REDUCE THE RISK OF ELECTRIC SHOCK, DO NOT REMOVE COVER.
NO USER SERVICEABLE PARTS INSIDE.
PLEASE REFER SERVICING TO QUALIFIED SERVICE PERSONNEL.**

WARNING

**TO PREVENT FIRE OR ELECTRIC SHOCK HAZARD, DO NOT EXPOSE THIS
APPLIANCE TO RAIN OR MOISTURE.**

NOTE: This equipment has been tested and found to comply with the limits for a Class "A" digital device, pursuant to Part 15 of the FCC Rules. These limits are designed to provide reasonable protection against harmful interference when the equipment is operated in a commercial environment. This equipment generates, uses and can radiate radio frequency energy and, if not installed and used in accordance with the instruction manual, may cause harmful interference to radio communications. Operation of this equipment in a residential area is likely to cause harmful interference in which case the users will be required to correct the interference at their own expense.

FCC Caution: To assure continued compliance, use only shielded interface cables when connecting to computer or peripheral devices. Any changes or modifications not expressly approved by the party responsible for compliance could void the user's authority to operate this equipment.

This Class A digital apparatus meets all the requirements of the Canadian Interference Causing Equipment Regulations.



LIMITATION OF LIABILITY

- THIS PUBLICATION IS PROVIDED “AS IS” WITHOUT WARRANTY OF ANY KIND, EITHER EXPRESS OR IMPLIED, INCLUDING BUT NOT LIMITED TO, THE IMPLIED WARRANTIES OF MERCHANTABILITY, FITNESS FOR ANY PARTICULAR PURPOSE, OR NON-INFRINGEMENT OF THE THIRD PARTY’S RIGHT.
- THIS PUBLICATION COULD INCLUDE TECHNICAL INACCURACIES OR TYPOGRAPHICAL ERRORS. CHANGES ARE ADDED TO THE INFORMATION HEREIN, AT ANY TIME, FOR THE IMPROVEMENTS OF THIS PUBLICATION AND/OR THE CORRESPONDING PRODUCT(S).

DISCLAIMER OF WARRANTY

IN NO EVENT SHALL THE SUPPLIER BE LIABLE TO ANY PARTY OR ANY PERSON, EXCEPT FOR REPLACEMENT OR REASONABLE MAINTENANCE OF THE PRODUCT, FOR THE CASES, INCLUDING BUT NOT LIMITED TO THE FOLLOWINGS:

- ANY DAMAGE OR LOSS, INCLUDING BUT WITHOUT LIMITATION, DIRECT OR INDIRECT, SPECIAL, CONSEQUENTIAL OR EXEMPLARY, ARISING OUT OF OR RELATING TO THE PRODUCT;
- PERSONAL INJURY OR ANY DAMAGE CAUSED BY INAPPROPRIATE USE OR NEGLIGENT OPERATION OF THE USER;
- UNAUTHORIZED DISASSEMBLE, REPAIR OR MODIFICATION OF THE PRODUCT BY THE USER;
- ANY PROBLEM, CONSEQUENTIAL INCONVENIENCE, OR LOSS OR DAMAGE, ARISING OUT OF THE SYSTEM COMBINED WITH THE DEVICES OF THE THIRD PARTY;
- ANY CLAIM OR ACTION FOR DAMAGES, BROUGHT BY ANY PERSON OR ORGANIZATION BEING A PHOTOGENIC SUBJECT, DUE TO VIOLATION OF PRIVACY WITH THE RESULT OF THAT SURVEILLANCE-CAMERA’S PICTURE, INCLUDING SAVED DATA, FOR SOME REASON, BECOMES PUBLIC OR IS USED FOR THE PURPOSE OTHER THAN SURVEILLANCE.

PRECAUTIONS

- **Please refer all work related to the installation of this product to qualified service personnel or system installers.**
- **Do not operate the appliance beyond its specified temperature, humidity or power source ratings.**

Use the appliance at temperature within **0°C ~ +50°C (32°F ~ 122°F)** and humidity below **85%**.

The input power source for this appliance is within **90 ~ 264 VAC, 47 ~ 63 Hz**.

Performance and lifetime of hard disk drives are easily affected by heat (used at high temperature). It is recommended to use this appliance at temperature within **+20°C ~ +30°C (68°F ~ 86°F)**
- **Handle the hard disk drives with care.**

It is possible to damage them if they are moved while their motors are still running. Do not move them just after turning the power on or off (for around 30 seconds). Protect the hard disk drives from static electricity.

Do not stack them or keep them upright.

Do not use an electric screwdriver to fix them.
- Clean only with dry cloth.
- Do not block any ventilation openings.
- Do not use the appliance near any heat sources such as radiators, heat registers, stoves or other apparatus that produce heat.
- Protect the power cord from being stepped on or pinched particularly at plugs, convenient receptacles and the points where they exit from the apparatus.
- Do not drop metallic parts through slots. This could permanently damage the appliance. Turn the power off immediately and contact qualified service personnel for service.
- Handle the appliance with care. Do not strike or shake, as this may damage the appliance.
- Do not expose the appliance to water or moisture, nor try to operate it in wet areas. Do take immediate action if the appliance becomes wet. Turn the power off and refer servicing to qualified service personnel. Moisture may damage the appliance and also cause electric shock.
- Do not use strong or abrasive detergents when cleaning the appliance body. When the dirt is hard to remove, use a mild detergent and wipe gently.
- Do not overload outlets and extension cords as this may result in a risk of fire or electric shock.
- Please make a note of your settings and save them. This will help when you are required to change the system configuration, or when unexpected failure or trouble occurs.
- Distributing, copying, disassembling, reverse compiling, reverse engineering, and also exporting in violation of export laws of the software provided with this product, is expressly prohibited.

Table of Contents

<u>1. Product Overview</u>	7
<u>1.1 Features</u>	7
<u>2. Panels And Remote Controller</u>	8
<u>2.1 Front Panel</u>	8
<u>2.2 Back Panel</u>	9
<u>2.3 Remote Controller</u>	11
<u>3. Installations</u>	12
<u>3.1 Basic Connections</u>	12
<u>3.2 Optional Connections</u>	14
<u>4. Main Screen And Basic Operations</u>	18
<u>4.1 Text Input</u>	18
<u>4.2 Login And Logout</u>	20
<u>4.3 Basic Operations</u>	21
<u>4.4 Digital Zoom</u>	23
<u>5. Menu Display</u>	24
<u>5.1 Status Display</u>	25
<u>5.2 Video Adjustment</u>	26
<u>5.3 VGA Display</u>	27
<u>5.4 Backup Device</u>	28
<u>5.5 Software Upgrade (Administrator)</u>	30
<u>5.6 System Shutdown (Administrator)</u>	31
<u>6. Setup (Administrator)</u>	32
<u>6.1 Pre-Camera Setup</u>	33
<u>6.2 Camera Setup</u>	34
<u>6.2.1 Video Loss Setup</u>	37
<u>6.2.2 Motion Setup</u>	39
<u>6.3 Alarm Setup</u>	43
<u>6.4 SEQ Display Setup</u>	45
<u>6.5 Scheduled Record Setup</u>	47
<u>6.6 HDD Setup</u>	49
<u>6.6.1 HDD Format/Clear</u>	51
<u>6.7 Password Setup</u>	53
<u>6.8 System Setup</u>	55
<u>6.9 RS-232/422/485 Setup</u>	57
<u>6.10 Network Setup</u>	59
<u>6.10.1 E-mail Setup</u>	61
<u>6.10.2 FTP Setup</u>	63

<u>6.10.3 Advanced Network Setup</u>	64
<u>7. PTZ Control</u>	65
<u>8. Search/Playback/Archive (Administrator/Supervisor)</u>	67
<u>8.1 Search By Time</u>	68
<u>8.2 Search By Event / Log Display</u>	70
<u>8.3 Smart Search</u>	72
<u>8.4 Search Archived Files</u>	75
<u>8.5 POS Search</u>	76
<u>8.6 Playback/Archive For Search By Time</u>	78
<u>8.7 Playback/Archive For Search By Event</u>	81
<u>8.8 Playback/Archive For Smart Search</u>	81
<u>8.9 Playback For Archived Files</u>	82
<u>8.10 Playback/Archive For POS Search</u>	82
<u>9. Remote Access</u>	83
<u>9.1 PC Remote Access</u>	83
<u>9.2 PDA/Mobile Phone Remote Access</u>	91
<u>Appendix A – Specifications</u>	92
<u>Appendix B – Structures Of Menu Displays</u>	94
<u>Appendix C – Time Zone Table</u>	95
<u>Appendix D – Keyboard Control Protocol</u>	97
<u>Appendix E – Recording Table</u>	99
<u>Appendix F – MS-Windows HEM Utilities</u>	101
<u>Appendix G – GPS Function in Remote Software with Google Earth...</u>	105

1. Product Overview

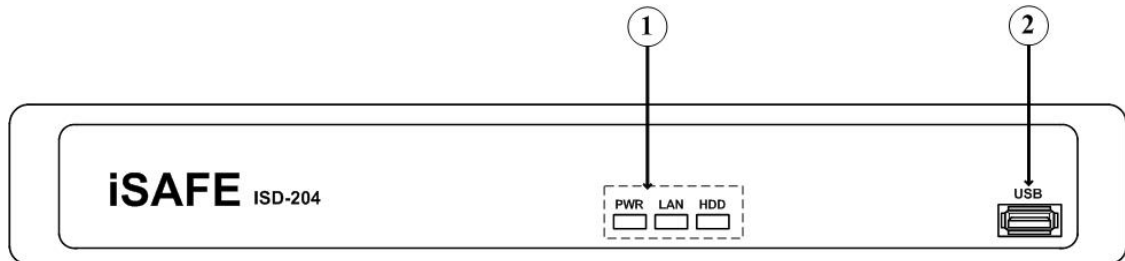
The digital video recorders, ISD-204, are designed for use within a surveillance system for security purpose, and are a combination of a hard disk recorder, a video multiplexer, and a web server. To achieve the highest inter-connectivity and inter-operability, this series of digital video recorders are all based on industry-leading front-end to back-end surveillance infrastructure. With state-of-the-art system architecture, powerful compression/decompression engine, and intelligent recording algorithms, sixfold operation can be easily achieved without sacrificing the increasing demands of functionality, performance, reliability, and availability in the surveillance industry.

1.1 Features

- Up to 4 color and/or B/W cameras can be connected
- **MPEG-4 SP (Simple Profile)** video compression/decompression with configurable quality
- ADPCM audio compression/decompression
- Real sixfold operation - simultaneous record, live, playback, backup, control, & remote access
- Record capabilities –
 - Full-D1: up to 30 (NTSC) / 25 (PAL) IPS (Images Per Second)
 - Half-D1: up to 60 (NTSC) / 50 (PAL) IPS
 - CIF: up to 120 (NTSC) / 100 (PAL) IPS
- Playback capabilities –
 - Full-D1: up to 30 (NTSC) / 25 (PAL) IPS
 - Half-D1: up to 60 (NTSC) / 50 (PAL) IPS
 - CIF: up to 120 (NTSC) / 100 (PAL) IPS
- Realtime live display, 30 (NTSC) / 25 (PAL) IPS, for each channel
- Event recording, time-lapse recording or both
- Playback search by time or event (alarm, motion, & video loss)
- **Smart search & playback**
- Versatile display formats: full-screen and 4 split windows
- Digital zoom, X2 & X4
- Intelligent motion detection with programmable area and sensitivity
- Powerful alarm processor with configurable triggering conditions and reactions
- One 3.5" hard disk drive
- Video/audio backup to **USB2.0 storage devices**, including **pen drive**.
- Ethernet interface for remote access through web browser or proprietary remote software, remote alarm notification, FTP video/audio storage, remote setup, and remote software upgrade
- **1 I.E. software for up to 4 DVRs**
- PTZ control capabilities & RS-485 keyboard control capabilities
- Multi-lingual support
- Multi-level password and authentication key protection to ensure high degree of security
- **GPS support**
- **POS support**
- **Remote access through mobile phone or PDA**

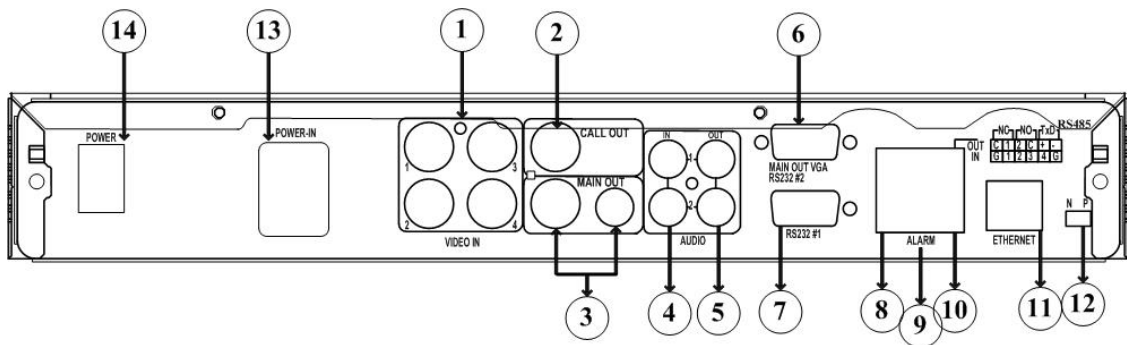
2. Panels and Remote Controller

2.1 Front Panel



1. **LEDs**
Indicators for POWER, HDD access, and LAN access.
2. **USB connector (USB)**
Connect to USB 2.0 compatible storage device, such as USB 2.0 disk drive, , card reader, etc. **Please note that the maximum USB current for the DVR is 500 mA.**

2.2 Back Panel



- 1. Video Input Connectors (1-4)**
Connect system cameras to these BNC connectors. The internal 75Ω termination is always ON.
- 2. Call Monitor Output Connector (CALL OUT)**
Connect TV monitor to this BNC connector for call monitor display.
- 3. Main Monitor Output Connectors (MAIN OUT, MAIN OUT Y/C)**
Connect TV monitors to the mini-din S-video connector or the BNC connector for main monitor display.
- 4. Audio Input Connectors (AUDIO IN 1-2)**
These RCA connectors accept line-in audio signals supplied from external devices such as microphone amplifiers.
- 5. Audio Output Connectors (AUDIO OUT 1-2)**
These connectors supply line-out audio signals to external devices such as speakers. Recorded audio will be supplied from AUDIO OUT during playback.
- 6. Main Monitor Output VGA Connector (MAIN OUT VGA, optional)**
Connect VGA monitor to the optional D-SUB 15-pin female connector for main monitor display.
- 7. RS-232 Connector (RS-232 #1, RS-232 #2 (optional))**
Connect this connector to PTZ camera(s), GPS modem, or POS system.
- 8. RS-485 Connector**
Connect this connector to RS-485 compatible PTZ camera(s) or keyboard. Please refer to the manuals come with the RS-485 compatible devices for the correct settings. Please refer to [Appendix D](#) for the Keyboard Control Protocol for the digital video recorder.

9. **Alarm Output Connectors (ALARM OUT 1-2)**
Connect these connectors to 1 Normally Closed (NC) alarm outputs (1) and 1 Normally Open (NO) alarm outputs (2).
10. **Alarm Input Connectors (ALARM IN 1-4)**
Connect these connectors to external devices such as sensors or door switches.
11. **Ethernet Connector**
Connect this unit to a 10/100Base-T Ethernet network through this port.
12. **NTSC/PAL Selector Switch**
Set this unit to NTSC or PAL according to the local TV system.
13. **Power Cord Inlet (POWER IN)**
For AC-IN model, connect a power cord to this inlet. It accepts 90~264 VAC, 47~63 Hz power source.
14. **Power Switch (POWER)**
Turn the power of this unit on/off.

2.3 Remote Controller

The remote controller ISD-R204, you can do all the operations by the remote controller only. The effective distance is about 10 meters without any obstacle.



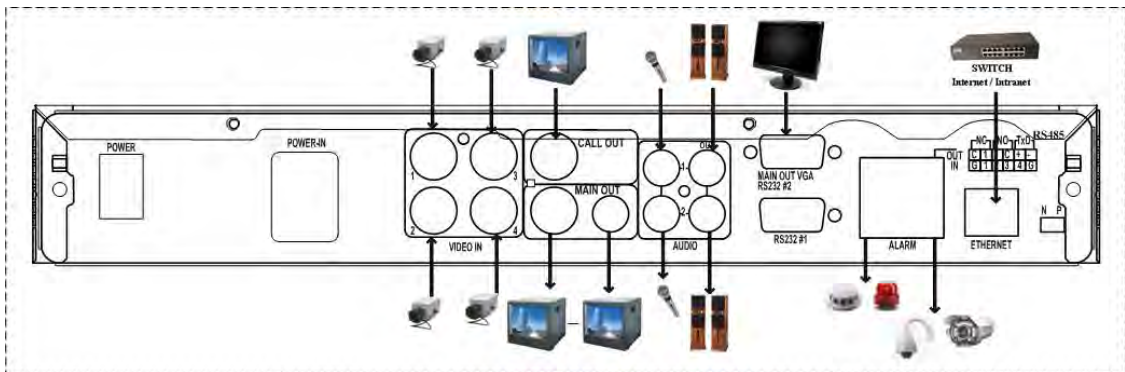
DVR ID selection buttons

3. Installations

The installations described below should be made by qualified service personnel or system installers.

3.1 Basic Connections

Please refer to the following diagram for the connections.



Please make sure to set the NTSC/PAL Selector Switch on the back panel according to the local TV system for the system to work correctly.

■ Cameras

Connect the camera video input connectors to the video outputs from system cameras or other composite video sources via coaxial cables. The internal 75Ω termination is always ON.

■ Main monitor

Connect the main monitor output connector (BNC or S-video) to a surveillance TV monitor, or connect the **optional VGA output connector** to a VGA monitor. The TV/VGA monitor displays selected live or recorded cameras in any available split window format.

■ Hard disk drive

Make sure to install one IDE hard disk (**Max. storage size 500GB**) inside the DVR. Please set the HDD as **master**. The steps are as below:

1. **Power off the machine, and then use a screwdriver to uncover it.**
2. Use a screwdriver to fix the IDE HDD as shown.



3. Connect the cables (upper: 2.5", lower: 3.5" HDD) as shown.



4. Use the tape to fix the flat cable connectors firmly, esp. for ISD-204.



5. Cover the machine.

Note: **The HDD must be formatted before it can be used to record video/audio.** Please refer to [Section 6.6.1](#) to format the HDD.

■ **Power**

For AC-IN model (ISD-204), plug 115 or 230 VAC power source into the power socket.

3.2 Optional Connections

■ Audio inputs

Connect the audio input connectors to the audio line-outs from system cameras or other audio sources. Please make sure to associate the audio inputs with the cameras in Camera Setup as described in [Section 6.2](#) accordingly.

■ Audio outputs

Connect the audio output connectors to the audio line-ins from speakers.

■ Alarm inputs

Connect the alarm inputs to NC and/or NO type of alarm signals. Please make sure to setup the alarm configurations as described in [Section 6.3](#) accordingly.

■ Alarm outputs

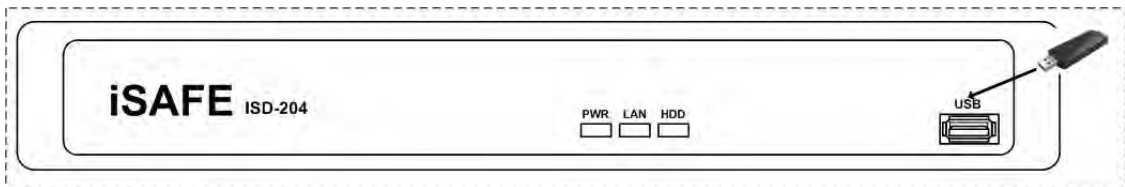
Connect the alarm output #1 to NC type of alarm signal, alarm output #2 to NO type of alarm signals.

■ Ethernet

Connect the Ethernet connector to a standard twisted-pair Ethernet cable for remote access via LAN or internet. Please make sure to setup the related configurations as described in [Section 6.10 Network Setup](#).

■ USB 2.0 disk drives

If the user wants to use USB2.0 peripheral device to retrieve important recorded images and/or audio, please connect it to the USB port connector.



■ I/R remote controller

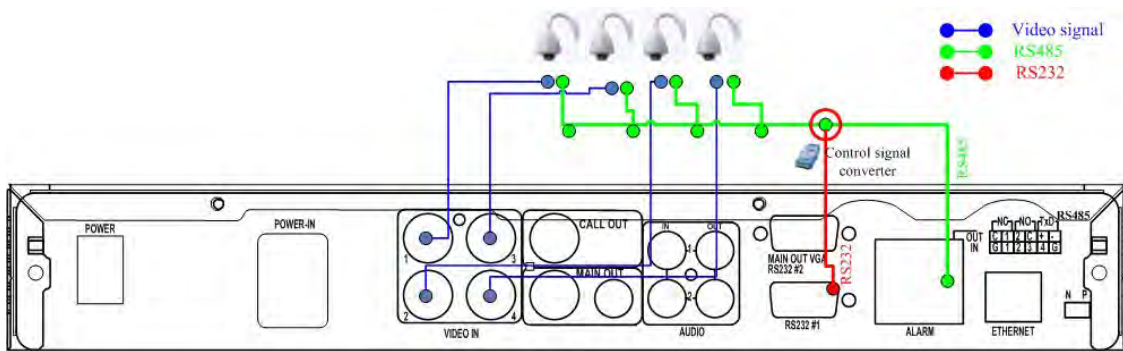
The user must use IR remote controller to control the digital video recorder.

■ Call monitor

Connect the call monitor output connector to a surveillance TV monitor. This monitor displays the full screen images of the cameras associated with the events (alarm or motion) or the images from the installed cameras sequentially according to the SEQ Display Setup ([Section 6.4](#)) for call monitor.

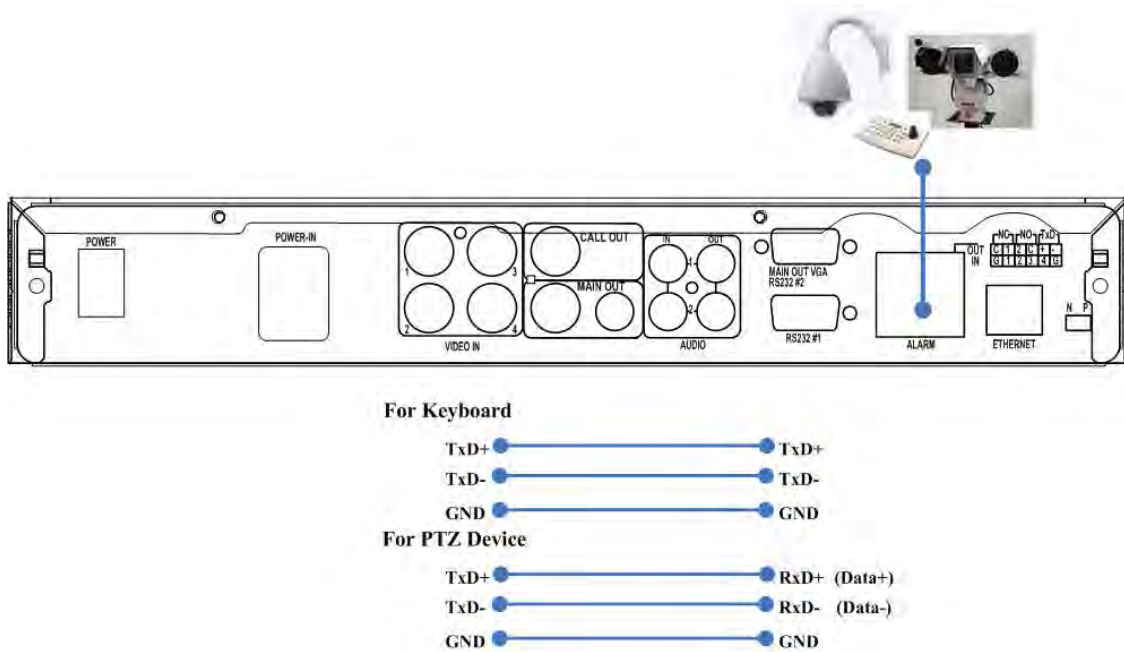
■ **PTZ Cameras**

Connect the RS-232 connector or the RS-485 connector to PTZ camera(s) via the appropriate cable. The system supports a variety of different PTZ cameras, including Pelco D protocol Dome, SamSung SCC-641P, Kalatel Cyber Dome, Bosch AutoDome, etc. But different PTZ cameras can coexist in a system only if they support the same protocol. Please make sure to set the PTZ ID of the camera(s), and setup the camera ([Section 6.1](#)), and RS-232 or RS-422/485 ([Section 6.9](#)) accordingly.



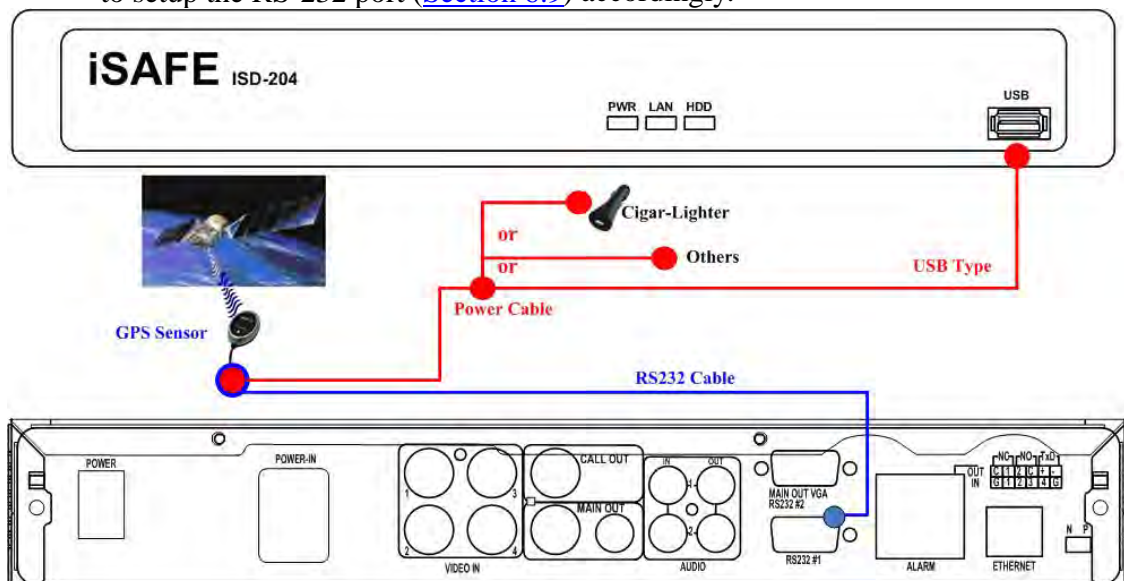
■ **RS-485 keyboard or Terminal**

Connect the RS-485 connector to a RS-485 keyboard controller or VT-100 terminal via the appropriate cables. Please refer to the following diagram for the correct connection. Please make sure to setup the RS-422/485 configurations as described in [Section 6.9](#) accordingly. Please refer to [Appendix D](#) for the Keyboard Control Protocol for the digital video recorder.



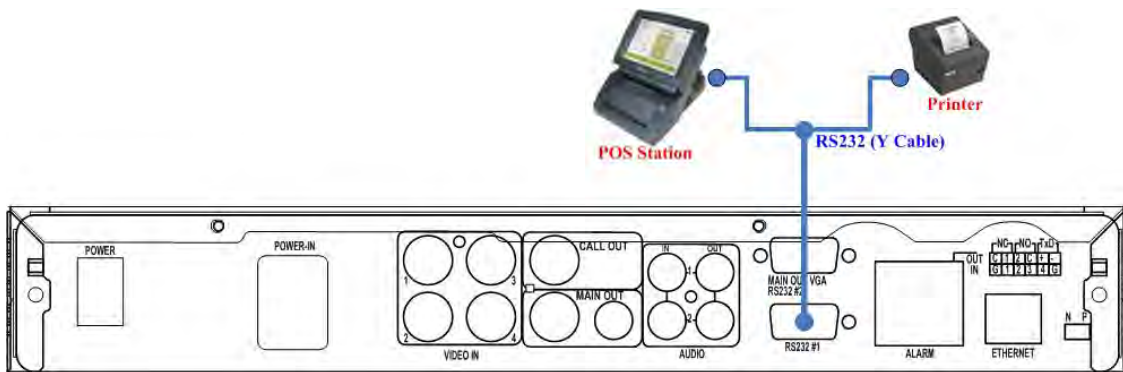
■ **GPS modem**

Connect the RS-232 connector to GPS modem via the appropriate cable. The system supports the GPS modems with **NMEA0183** protocol. Please make sure to setup the RS-232 port ([Section 6.9](#)) accordingly.

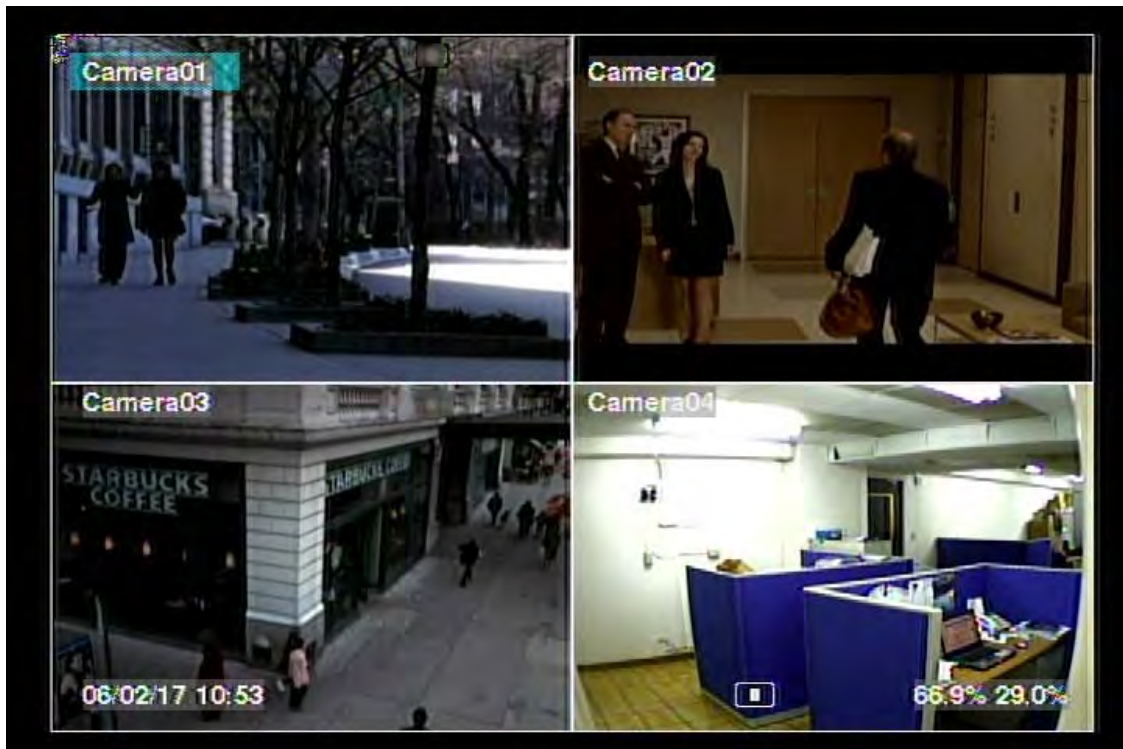


■ **POS system**

Connect the RS-232 connector to POS system via the appropriate cable. The system supports the POS systems which can be connected to the following printers – Epson-TM200, Epson-TMU295, Epson-TMU300, Epson-TMU675, Epson-TMT882, Epson-RPU420, and Epson-MD332S. Please make sure to setup the RS-232 port ([Section 6.9](#)) accordingly.



4. Main Screen And Basic Operations



The split-window screen, as shown above, is the main screen after system startup. There are two types of split-window screens, including 1-Window and 4-Window. The system will remember the last one before normal shutdown (as described in [Section 5.6](#)) of the system. In addition to the split windows, the system time is displayed on the lower-left corner, the system states on the lower-right corner, and the rolling screen messages, if shown while certain event occurs, on the lower corner.

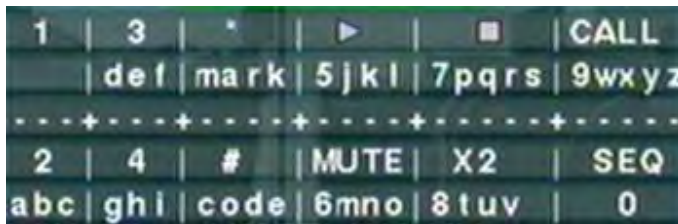
The system states, from right to left, are described as the followings:

- (1) Normal recording percentage,
- (2) Alarm recording percentage,
- (3) Mute state – speaker icon shown for not mute, not shown for mute,
- (4) X2 state – X1, X2, or X4,
- (5) Manual record ON/OFF – REC icon shown for ON,
- (6) Backup state – Backup icon shown for backup, and
- (7) SEQ display ON/OFF or playback state – SEQ icon shown for SEQ display ON, other icons for different playback states.

4.1 Text Input

There are certain circumstances that the system requires the user to enter text, such as system login, camera title setup, and so on. Please follow the steps below to enter text:

- (1) Press **ENTER** to edit the highlighted option. The flashing cursor will be shown to indicate the editing point. Besides, a **keypad hint** will be shown as below.



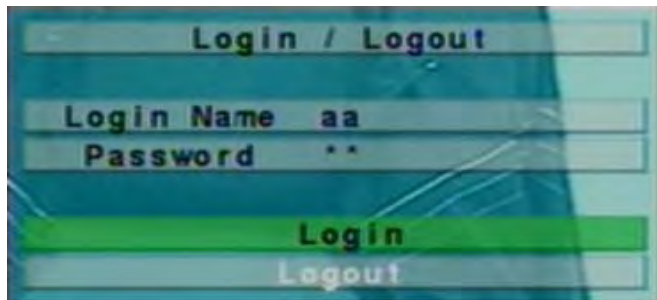
- (2) Press ◀▶ to move the cursor to the left/right.
- (3) Press **code** in text editing mode to change text case. (If this entry can accept number only, pressing **code** will have no effects.) Indicators on the screen show the current setting:
123 = Number only
abc = No capital letters
ABC = All capital letters
CODE = Internal code for the selected language, such as Chinese, Japanese, etc.
- (4) Press a number key (**1-9, 0**) repeatedly until the character you want appears. (**1** for 1 or space, **2** for 2, a/A, b/B, or c/C, ▶/|| for **5, j/J, k/K, l/L, MUTE for 6, m/M, n/N, o/O**, the others as shown on the **keypad hint**) If internal **CODE** is selected, a **CODE line** will be added (after the first code is entered) for each new code to be entered. Please check the internal code table for the selected language. For 2-byte code, e.g. Chinese or Japanese, the code accepted is from 0000 - FFFF.
- (5) Press **mark** to bring up a list of punctuation marks and special characters. The highlighted character in the list shows the selected one. Press ▲▼◀▶ to change the selection.
- (6) If you make a mistake, press **BS** to remove the character to the left of the cursor, or press **DEL** to delete the character at the current cursor position.
- (7) In text editing mode, internal code box, and mark list, press **ENTER** to exit and save changes, press **ESC** to exit without making changes.

4.2 Login And Logout

There are three password levels in the system, including **Administrator** (highest), **Supervisor**, and **Operator** (lowest). If the user does not login the system, he/she will be treated as “Guest” and can only view live video display.

The system allows up to 18 user accounts. The administrator can set up the login name and password for each user. (Please refer to [Section 6.7](#) for Password Setup.) The Operator can operate live video display, the Supervisor live video display, image playback and archive, and the Administrator everything.

To login/logout the system, press **MENU** in split-window display to call up Menu display, and then press **ENTER** when the highlighted option is **Login/Logout** to enter Login/Logout display as shown.



In Login/Logout display, follow the Text Input method described in [Section 4.1](#) to enter the **Login name** and **Password**, press **▲ ▼** to highlight and select **Login** option, and then press **ENTER** to login the system. If the user wants to logout the system, just press **▲ ▼** to highlight and select **Logout** option, and then press **ENTER**. Press **ESC** to exit without making changes.

There is one factory-preset login name/password aa/11 at **Administrator** level. The user can use it to login the system for the first time.

Should the user have forgotten all the administrator-level passwords, please contact the local dealer or installer to recover from it.

4.3 Basic Operations

The basic user's operations after he/she has logged into the system are described below:

- **Numeric**
Press these buttons to switch to the full-window display for the camera.
- **Alarm Reset**
Press this button to cancel alarm activation, i.e. reset the alarm outputs and silence the buzzer.
- **MODE (Administrator/Supervisor)**
In split-window display, press this button to change circularly the live/playback mode for the focus window and the other windows that form a rectangle on the screen.
- **SEQ**
Press this button to switch to or return from SEQ display mode. In SEQ display mode, each page in the sequence will be shown for the preset page dwelling time sequentially, and SEQ icon will be shown on the lower-right corner of the screen.
- **SEARCH (Administrator/Supervisor)**
In split-window display, press this button to display the search menus. The system will remember the last one the user chose.
- **REC**
Press this button to force manual recording. To stop manual recording, press it again. All cameras will be recorded as if the scheduled record is A/V, and REC icon will be shown on the lower-right corner of the screen if manual recording is ON.
- **MENU / ESC**
In split-window display, press this button to display the versatile menu.
- **Stop (■) / PTZ**
In split-window display, press this button to enter PTZ control mode if the focus camera is a PTZ camera.
- **X2**
In full screen display, press this button to enter Digital Zoom mode. Please refer to [Section 4.4 Digital Zoom](#) for the detailed operations in Digital Zoom mode.
- **▲ ▼ ◀ ▶**
Press these buttons to move focus. The title of the camera for the focus window is highlighted as shown on the screen.

■ **MUTE**

Press this button to mute/not mute the audio.

■  +/-

Press these buttons to circulate up/down among the available split-window displays.

■ **ENTER**

Press this button to display the **GPS/POS** data if there's GPS/POS data fed to the DVR. Please select the Type (GPS or POS), Position, Background, Rows, and number of Characters on the screen, and then press **ENTER** to display the GPS/POS data, or **ESC** to cancel. In **GPS/POS display**, press **▲▼** for page up/down, press **ENTER** to close it, or press **MENU/SEARCH/..** to call up the corresponding display as if there's no GPS/POS display.

4.4 Digital Zoom



The system supports X2/X4 Digital Zoom function. To use this function, press **X2** button in full screen display to enter Digital Zoom mode. There will be a zoom window shown in the video window as shown. The zoom window (a) will always be shown at zoom factor X1, (b) can be shown or hidden at zoom factor X2, and (c) will never be shown at zoom factor X4. The operations in Digital Zoom mode are as below:

■ ▲▼◀▶

Press these buttons to

- (a) move the zoom window if it's shown in the video window, or
- (b) navigate the video window around if the zoom factor is X2 or X4.

■ **ENTER**

Press this button to zoom in the zoom window, from X1 to X2 or from X2 to X4, if the zoom window is shown in the video window.

■ **X2**

Press this button to

- (a) show/hidden the zoom window if the current zoom factor is X1/X2, or
- (b) zoom out the video window back to zoom factor X1 if the current zoom factor is X4.

■ **ESC**

Press this button to escape from Digital Zoom mode, and return to normal full screen display. The video window will always return to zoom factor X1.

5. Menu Display

In split-window display, press **MENU** to call up Menu display as shown.

There are a variety of displays under Menu display. In Menu display and all the subsequent displays, the items enabled are shown in black-colored text, and those disabled in white-colored text. Please refer to [Appendix B](#) for the Structure Of Menu Displays. Please refer to [Section 4.2](#) for Login/Logout display.

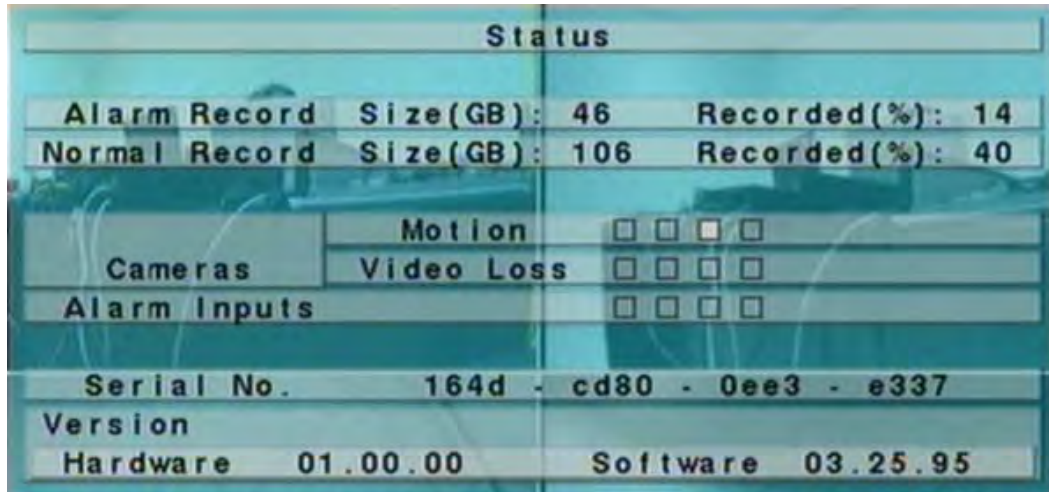


The user's operations are described as the followings:

- ▲ ▼
Press these buttons to change the highlighted item.
- **ENTER**
Press this button to enter the detailed display of the highlighted option. For the details of each option, please refer to the following sections.
- **ESC**
Press this button to escape from Menu display, and return to split-window display.

5.1 Status Display

In Menu display, press ▲▼ to change the highlighted option to **Status**, and then press **ENTER** to call up Status display as shown.

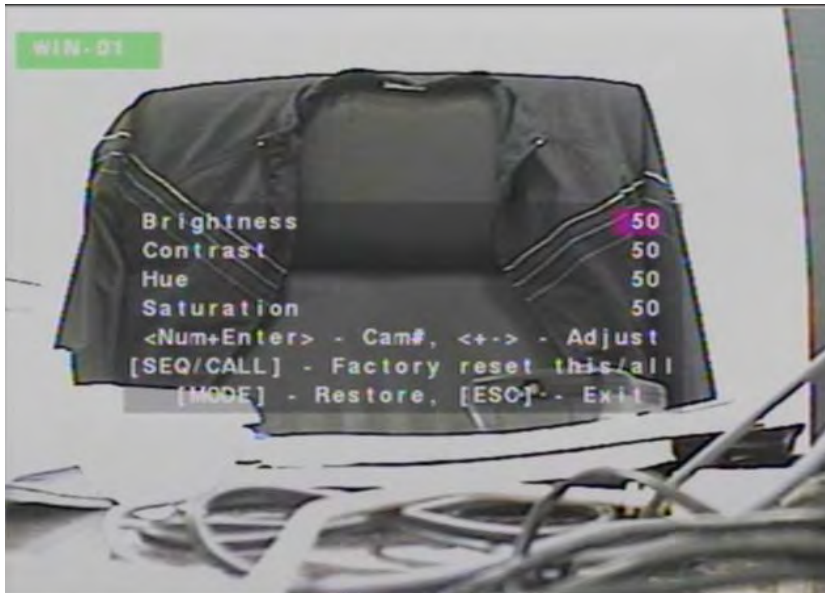


Status			
Alarm Record	Size(GB): 46	Recorded(%): 14	
Normal Record	Size(GB): 106	Recorded(%): 40	
Cameras	Motion	<input type="checkbox"/>	<input type="checkbox"/>
	Video Loss	<input type="checkbox"/>	<input type="checkbox"/>
Alarm Inputs		<input type="checkbox"/>	<input type="checkbox"/>
Serial No.	164d - cd80 - 0ee3 - e337		
Version			
Hardware	01.00.00	Software	03.25.95

Status display includes Alarm Recording Status, Normal Recording Status, Camera Status, Alarm Input Status, Product Serial Number, and Product Version Number. Press **ESC** to escape from Status display, and return to Menu display.

5.2 Video Adjustment

In Menu display, press ▲▼ to change the highlighted option to **Video Adjustment**, and then press **ENTER** to call up Video Adjustment display as shown.



There are 4 items which can be adjusted, including Brightness, Contrast, Hue, and Saturation. The operations are as below:

- ▲▼
Press these buttons to select the items.
- **Numeric**
Press these buttons to change the camera.
- +/-
Press these buttons to adjust the selected item.
- **SEQ**
Press this button to reset the settings for this camera to factory default values.
- **CALL**
Press this button to reset the settings for all cameras to factory default values.
- **MODE**
Press this button to restore the values.
- **ESC**
Press this button to escape from this screen, and return to Menu display. The settings will be saved for future reference.

5.3 VGA Display

In Menu display, press ▲▼ to change the highlighted option to **VGA Display**, and then press **ENTER** to call up VGA Display dialog as shown.



There are 5 items which can be adjusted, including Resolution (1280x1024, 1024x768, 800x600, 640x480), Brightness, Contrast, Hue, and Saturation. The operations are as below:

- ▲▼
Press these buttons to select the items.
- +/-
Press these buttons to adjust the selected item.
- **MODE**
Press this button to restore **Brightness, Contrast, Hue, and Saturation** to factory default values.
- **ESC**
Press this button to escape from this screen, and return to Menu display. If the contents have been modified, a Save dialog will be shown to ask the user to save the changes, press **ENTER** to exit and save, **ESC** to exit without saving.

5.4 Backup Device

In Menu display, press ▲▼ to change the highlighted option to **Backup Device**, and then press **ENTER** to call up **Backup Device** display as shown below.



The system supports a variety of [USB 2.0 storage devices](#). The operations are as below:

■ ▲▼◀▶

Press these buttons to select the items.

■ **ESC**

Press this button to escape from this screen, and return to previous display.

- **Connect/Disconnect** – If the backup device is disconnected (as shown in Current Status), please plug the device in one of the backup ports USB device, and then press **ENTER** to command the system to connect with it. If the device is already connected (EX. R/W - Read/write, as shown in Current Status), please press **ENTER** to command the system software to disconnect with the device, and then unplug the device from the backup port.

Note 1: Before using USB pen drive, please format it to FAT32 file system by MS-Windows.

Note 2: The backup device has to be connected by the system software before it can be used to read/write.

Note 3: Some backup devices may have compatibility problems. Please contact your local dealer or installer for the supported devices.

Note 4: Please DO NOT unplug the backup device when it's connected, or the system may become abnormal or even hang up.

■ **Backup**

Press **ENTER** when this item is selected to backup the configurations of this unit to the corresponding device.

■ **Restore**

Press **ENTER** when this item is selected to restore the configuration files in the corresponding backup device to this unit.

Some USB 2.0 Devices Tested

USB-Storage Enclosures 5.25” –

Macpower’s Alumni Prefect USB 2.0 - PF-U2MS

USB-Disk Storage –

Transcend’s JetFlash 150/V60 Series

Apacer’s Handy Steno AH220

Pretec’s i-Disk Wave 512M-Black

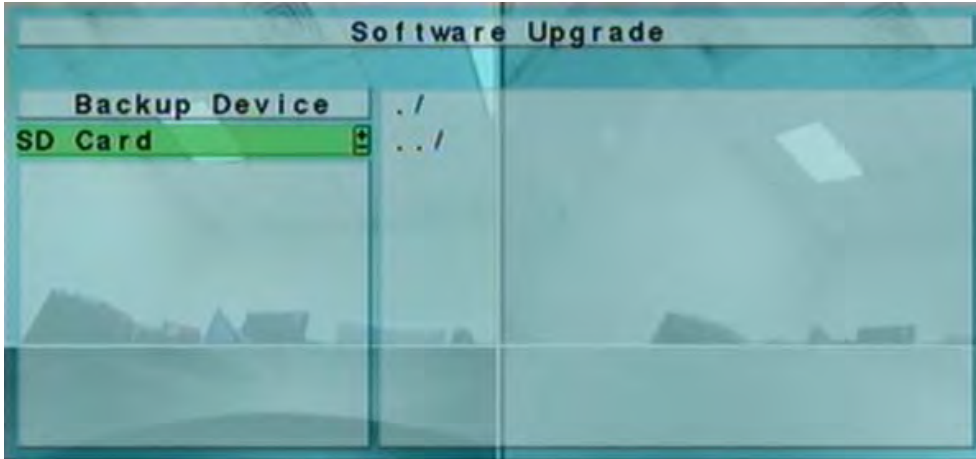
Kingston’s DataTraveler USB Flash Driver(DTI/512FE)

SanDisk’s Cruzer micro USB Flash Driver

Sony’s MICRO VAULT Classic Series

5.5 Software Upgrade (Administrator)

In Menu display, press ▲▼ to change the highlighted option to **Software Upgrade**, and then press **ENTER** to call up Software Upgrade display as shown.



The operations are as below:

- ▲▼◀▶

Press these buttons to select the items.

- **ESC**

Press this button to escape from this screen, and return to Menu display.

Following is a brief description for each item and its specific operations:

- **Backup Device** – press **ENTER** to call up Backup Device dialog (if there's no backup device connected).

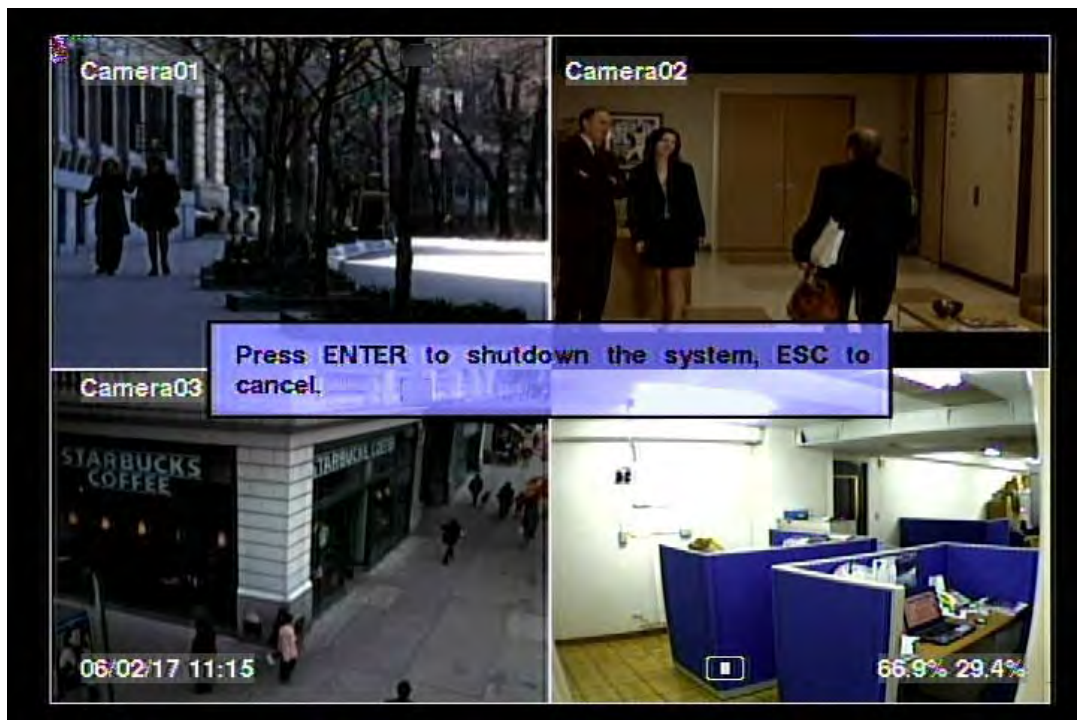
- **Disk Storage** – to select the disk storage to upgrade. Press +/- buttons to select the available storage.

- **Upgrade File** – press **ENTER** to start the upgrade process when the highlighted file is a correct upgrade file. A confirmation dialog will be shown on the screen, press **ENTER** to confirm to upgrade the system software.

Note : After the software is upgraded, the system will restart immediately. The split window display will be shown after restart, please wait a moment.

5.6 System Shutdown (Administrator)

In Menu display, press ▲▼ to change the highlighted option to **Shutdown**, and then press **ENTER** to shutdown the system. A confirmation dialog will be shown on the screen, press **ENTER** to confirm the shutdown. The system will save all the files and all the states, and then display a power-off message in the rolling screen message area. The user may power off the system safely when the power-off message is shown.



6. Setup (Administrator)

In Menu display, press ▲▼ to change the highlighted option to **Setup**, and then press **ENTER** to call up Setup Menu display as shown. (To enter Setup Menu display of the system, please login as Administrator first.)

The user's operations are described as the followings:

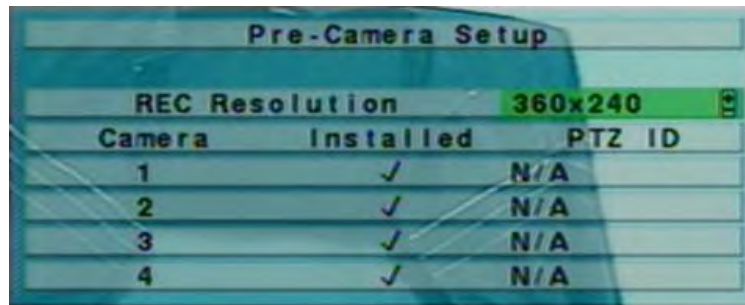
- ▲▼
Press these buttons to change the highlighted item.
- **ENTER**
Press this button to enter the setup of the highlighted option. For the details of each option, please refer to the following sections.
- **ESC**
Press this button to escape from Setup Menu display, and return to Menu display.



If the user wants to reset all the settings to factory default values, he/she may press ▲▼ to change the highlighted option to **Factory Defaults**, and then press **ENTER**. A confirmation dialog will be shown, press **ENTER** again to make the changes, **ESC** to not do it.

6.1 Pre-Camera Setup

In Setup Menu display, press ▲▼ to change the highlighted option to **Pre-Camera**, and then press **ENTER** to call up Pre-Camera Setup display as shown.



There are up to 4 cameras which can be connected to the system. The Pre-Camera Setup allows the administrator to define some fundamental attributes for all the installed cameras.

The general operations are as below:

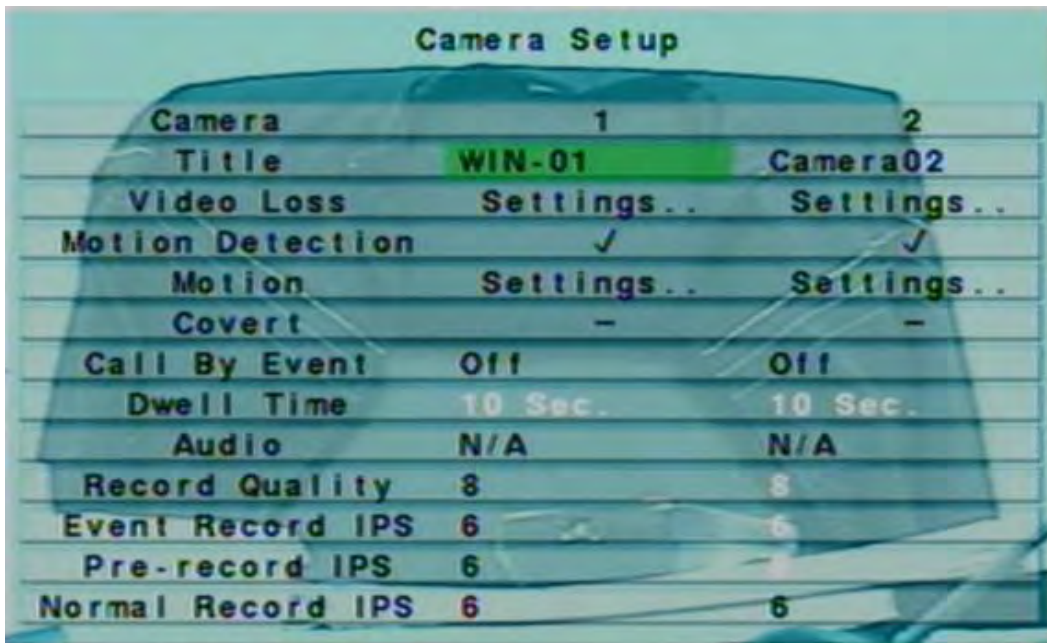
- ▲▼◀▶
Press these buttons to select the items.
- **Numeric**
Press these buttons to select the camera.
- **ESC**
Press this button to escape from this screen, and return to Setup Menu display. If the contents have been modified, a Save dialog will be shown to ask the user to save the changes, press **ENTER** to exit and save, **ESC** to exit without saving.

Following is a brief description for each item and its specific operations:

- **REC Resolution** – the record resolution for all the cameras in the system. For NTSC, it can be 720x480, 720x240, or 360x240; for PAL, 720x576, 720x288, or 360x288. Press +/- buttons to select the resolution.
- **Installed** – whether this camera is installed or not. If installed, the following items will be settable. Press **ENTER** or +/- to check/uncheck this item. The default setting is “✓” - checked.
- **PTZ ID** – the PTZ ID of this camera if it’s a PTZ camera. The PTZ ID has to be consistent with the setting of this camera. Please refer to the manual of the camera for the ID setting. Press +/- buttons to change the value (N/A or 0-255). The default setting is “N/A” – Not Available, which means that it’s not a PTZ camera.

6.2 Camera Setup

In Setup Menu display, press ▲▼ to change the highlighted option to **Camera**, and then press **ENTER** to call up Camera Setup display as shown.



The screenshot shows a 'Camera Setup' menu with two columns for Camera 1 and Camera 2. The 'Title' for Camera 1 is 'WIN-01' and for Camera 2 is 'Camera02'. Other settings include Video Loss, Motion Detection, Motion, Covert, Call By Event, Dwell Time, Audio, Record Quality, Event Record IPS, Pre-record IPS, and Normal Record IPS.

Camera	1	2
Title	WIN-01	Camera02
Video Loss	Settings..	Settings..
Motion Detection	✓	✓
Motion	Settings..	Settings..
Covert	-	-
Call By Event	Off	Off
Dwell Time	10 Sec.	10 Sec.
Audio	N/A	N/A
Record Quality	8	8
Event Record IPS	6	6
Pre-record IPS	6	6
Normal Record IPS	6	6

The Camera Setup allows the administrator to define the attributes for each camera. There are up to 4 cameras which can be connected to the system.

The general operations are as below:

- ▲▼◀▶
Press these buttons to select the items. The display will scroll left/right if the selected item is not shown on the screen.
- **Numeric**
Press these buttons to select the camera.
- **COPY** (📄)
Press this button to copy all the settings - excluding detailed Motion settings, Video Loss settings, Title/Audio - of the focus camera to all the following cameras. (EX. focus camera is 1, its settings will be copied to those of cameras 2-4.)
- **ESC**
Press this button to escape from this screen, and return to Setup Menu display. If the Save dialog is shown, press **ENTER** to exit and save, **ESC** to exit without saving.

Following is a brief description for each item and its specific operations:

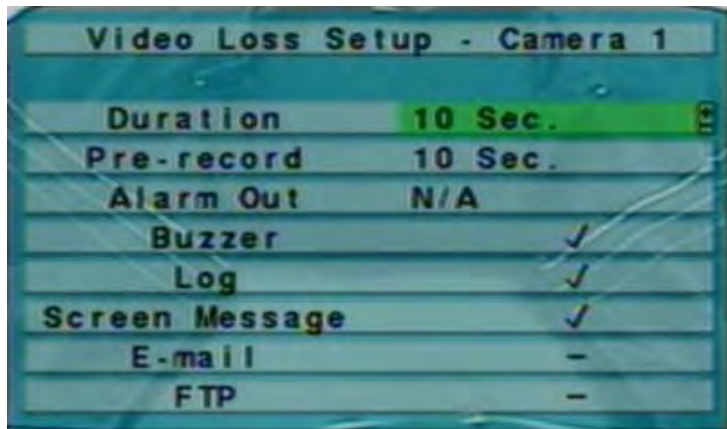
- **Title** – The title (Max. 8 characters) of this camera. Please follow the Text Input method described in [Section 4.1](#) to modify this item.
- **Video Loss Settings..** – used to setup the action settings when video loss is detected for this camera. Press **ENTER** in **Settings..** to call up Video Loss Setup display for the camera. Please refer to [Section 6.2.1](#) for the details.
- **Motion Detection** – whether the motion detection of this camera is enabled or not. **(Note : this field has no effect for the Smart Search information.)** Press **ENTER** or +/- to check/uncheck this item. The default setting is “” - checked.
- **Motion Settings..** – used to setup the motion settings, **used for Motion Detection or Smart Search**, for this camera. Press **ENTER** in **Settings..** to call up Motion Setup display for the camera. Please refer to [Section 6.2.2](#) for the details. **Please note that if the Motion Detection is disabled, the default factory motion settings should work fine for Smart Search.**
- **Covert** – covert or not. If the camera is covert, the video of this camera can only be seen if the user has logged in as Administrator. Press **ENTER** or +/- to check/uncheck this item. The default setting is “-” - unchecked.
- **Call By Event** – whether to switch the call monitor to the video of this camera if certain event occurs for this camera. There are 4 options, including Off, Motion, Alarm, Both (Motion & Alarm). Press +/- buttons to select one.
- **Dwell Time** – the dwell time if **Call By Event** is set to Motion, Alarm, or Both. Press +/- buttons to adjust the value (3-60 seconds, discrete).
- **Audio** – the AUDIO IN corresponding to this camera. **If selected, the audio data for AUDIO IN #1 and #2 will be mixed and then recorded with the video data for this camera.** Press +/- buttons to select none (N/A) or the AUDIO Inputs (1/2). The default setting is “N/A”.
- **Record Quality** – the record quality for this camera. Press +/- buttons to select the value (1-9, with 1 the lowest (rough) quality, 9 the highest (fine) quality).
- **Event Record IPS** – the IPS (Images Per Second) for this camera if certain event (Motion, Alarm) occurs for this camera. This camera will be recorded at this rate for Post-record time since the event occurs. (Please refer to the following sections for Post-record time.) Press +/- buttons to select the value (0 – 25 (PAL) / 30 (NTSC), discrete).
- **Pre-record IPS** – the pre-record IPS for this camera if certain event (Video Loss, Motion, Alarm) occurs for this camera. This camera is recorded at this rate for

Pre-record time before the event occurs. (Please refer to the following sections for Pre-record time.) Press +/- buttons to select the value (0 – **Event Record IPS** for this camera, discrete). **Please note that the total Event Record IPS / Pre-record IPS should not exceed the system recording capacity (NTSC: 120/CIF, 60/Half-D1, 30/Full-D1; PAL: 100/CIF, 50/Half-D1, 25/Full-D1), or the system will lower the actual rate automatically at recording.**

- **Normal Record IPS** – the normal record IPS for this camera. This camera will be recorded at this rate if no event occurs. Press +/- buttons to select the value (0 – **Pre-record IPS** for this camera, discrete).

6.2.1 Video Loss Setup

In Camera Setup, press **ENTER** to call up Video Loss Setup of the selected camera as shown when the highlighted option is **Video Loss Settings..** of the camera to setup. The Video Loss Setup allows the administrator to define how the system responds to the detected video loss for the camera.



The general operations are as below:

- ▲ ▼
Press these buttons to select the items.
- **Numeric**
Press these buttons to select the camera.
- **COPY** (📄)
Press this button to copy the Video Loss settings of the focus camera to all the following cameras. (EX. focus camera is 1, its Video Loss settings will be copied to those of cameras 2-4.)
- **ESC**
Press this button to escape from this screen, and return to Camera Setup display. If the Save dialog is shown, press **ENTER** to exit and save, **ESC** to exit without saving.

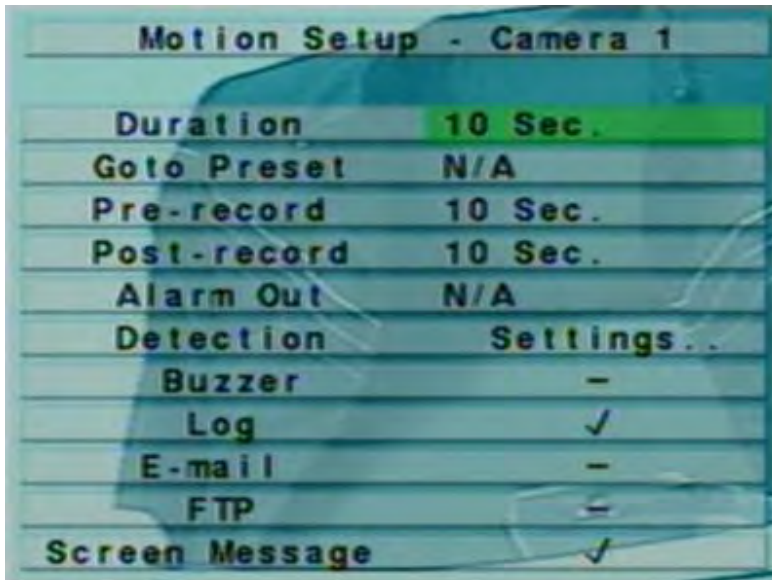
Following is a brief description for each item and its specific operations:

- **Duration** – response duration to define at most how long (in seconds) the Alarm Out relay and the Buzzer will keep being triggered after video loss is detected for this camera. However, the Alarm Out relay and the Buzzer will be reset immediately once the camera returns to normal. Press +/- buttons to adjust the value (3 seconds - 60 minutes, discrete, '-' for 'Forever').
- **Pre-record** – to define how long before video loss is detected this camera shall be intensively recorded at Pre-record IPS. Press +/- buttons to adjust the value (0-10 seconds, discrete). Please note that the actual pre-record time may be shorter than the value set if the total size of the pre-record pictures exceeds the pre-record buffer size of the system.

- **Alarm Out** – to define which Alarm Output will be triggered when video loss of this camera is detected. Press +/- buttons to select none (N/A) or one of the Alarm Outputs (1-2).
- **Buzzer** – to activate the internal Buzzer or not when video loss of this camera is detected. Press **ENTER** or +/- to check/uncheck this item. The default setting is “✓” - checked.
- **Log** – to log to event logs or not. Press **ENTER** or +/- to check/uncheck this item. The default setting is “✓” - checked.
- **Screen Message** – to display the event message on the screen or not. Press **ENTER** or +/- to check/uncheck this item. The default setting is “✓” - checked.
- **E-mail** – to send the event e-mail to remote station or not. The e-mail will be sent to the predefined receivers at the moment when the event is triggered. Press **ENTER** or +/- to check/uncheck this item. The default setting is “-” - unchecked.
- **FTP** – to send the recorded event video/audio files to FTP server or not. Press **ENTER** or +/- to check/uncheck this item. The default setting is “-” - unchecked.

6.2.2 Motion Setup

In Camera Setup, press **ENTER** to call up Motion Setup as shown when the highlighted option is **Motion Settings..** of the camera to setup. The Motion setup allows the administrator to define how the system responds to the detected motion for the camera.



The general operations are as below:

- ▲▼
Press these buttons to select the items.
- **Numeric**
Press these buttons to select the camera.
- **COPY** (📄)
Press this button to copy the Motion settings, including Detection settings, of the focus camera to all the following cameras. (EX. focus camera is 1, its Motion settings will be copied to those of cameras 2-4.)
- **ESC**
Press this button to escape from this screen, and return to Camera Setup display. If the Save dialog is shown, press **ENTER** to exit and save, **ESC** to exit without saving.

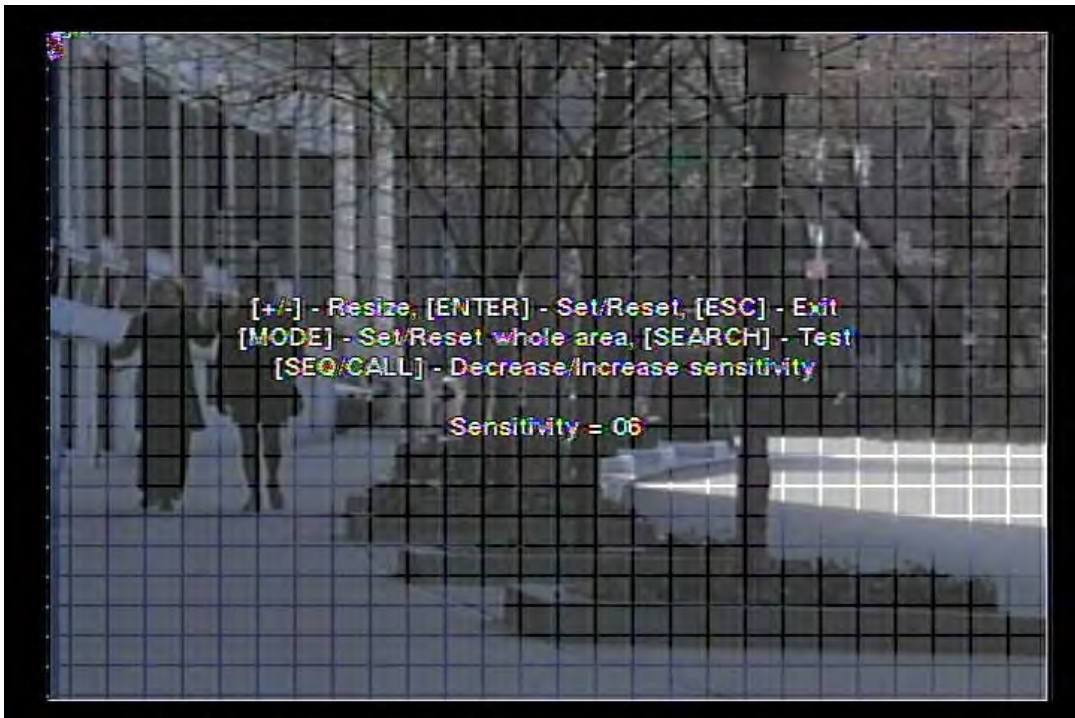
Following is a brief description for each item and its specific operations:

- **Duration** – response duration to define at most how long (in seconds) the Alarm Out relay and the Buzzer will keep being triggered after motion is detected for

this camera. However, the Alarm Out relay and the Buzzer will be reset immediately once the camera returns to normal. Press +/- buttons to adjust the value (3 seconds - 60 minutes, discrete, '-' for 'Forever').

- **Goto Preset** – to define the preset position to go to if motion is detected and this camera is a PTZ camera. For more details about preset locations, please refer to [Chapter 7 PTZ Control](#).
- **Pre-record** – to define how long before motion is detected this camera shall be intensively recorded at Pre-record IPS. Press +/- buttons to adjust the value (0-10 seconds, discrete). Please note that the actual pre-record time may be shorter than the value set if the total size of the pre-record pictures exceeds the pre-record buffer size of the system.
- **Post-record** – to define how long after motion is detected this camera shall be intensively recorded at Event Record IPS. Press +/- buttons to adjust the value (0 second - 60 minutes, discrete).
- **Alarm Out** – to define which Alarm Output will be triggered when motion of this camera is detected. Press +/- buttons to select none (N/A) or one of the Alarm Outputs (1-2).
- **Buzzer** – to activate the internal Buzzer or not when motion of this camera is detected. Press **ENTER** or +/- to check/uncheck this item. The default setting is “~” - checked.
- **Log** – to log to event logs or not. Press **ENTER** or +/- to check/uncheck this item. The default setting is “~” - checked.
- **Screen Message** – to display the event message on the screen or not. Press **ENTER** or +/- to check/uncheck this item. The default setting is “~” - checked.
- **E-mail** – to send the event e-mail to remote station or not. The e-mail will be sent to the predefined receivers when the event is triggered. Press **ENTER** or +/- to check/uncheck this item. The default setting is “-” - unchecked.
- **FTP** – to send the recorded event video/audio files to FTP server or not. Press **ENTER** or +/- to check/uncheck this item. The default setting is “-” - unchecked.
- **Detection Settings..** – used to setup the motion detection settings, including detection area and sensitivity, when motion is detected for this camera. **Please note that the detection area and sensitivity are also used for the Smart Search information. There won't be any Smart Search information stored outside the detection area. So, it's better to enable the whole area if the motion detection for the camera is disabled (and only Smart Search is used).** Press **ENTER** in **Settings..** to call up Motion Detection Setup (as shown) for this

camera. In Motion Detection Setup, the video area is divided into many small grids, and the area with **transparent grids** is the area which will **be detected for motion**, while gray grids not detected for motion. Besides, there is a (green) Mask window.



Following is a brief description for the operations:

- **Numeric**
Press these buttons to select the camera.
- **▲▼◀▶**
Press these buttons to move the Mask window.
- **+/-**
Press these buttons to resize the Mask window.
- **ENTER**
Press this button to set/reset the area under the Mask window.
- **MODE**
Press this button to set/reset the whole video area.
- **SEQ**
Press this button to decrease the sensitivity, from 10 – 1, for the motion detection of this camera.

■ **CALL**

Press this button to increase the sensitivity, from 1 – 10, for the motion detection of this camera.

■ **SEARCH**

Press this button to test the motion detection of this camera. The detected motion will be shown on the screen. Press this button again to stop testing.

■ **ESC**

Press this button to escape from Motion Detection Setup, and return to Motion Setup.

6.3 Alarm Setup

In Setup Menu display, press ▲▼ to change the highlighted option to **Alarm**, and then press **ENTER** to call up Alarm Setup display as shown. The Alarm Setup allows the administrator to define the attributes for each alarm input, and the actions if it's triggered. There are up to 4 alarm inputs which can be connected to the system.



Alarm In	1	2	3	4
Normal State	Open	Open	Open	Open
Focus Camera	1	2	3	4
Duration	10 Sec.	10 Sec.	10 Sec.	10 Sec.
Goto Preset	N/A	N/A	N/A	N/A
Pre-record	10 Sec.	10 Sec.	10 Sec.	10 Sec.
Post-record	10 Sec.	10 Sec.	10 Sec.	10 Sec.
Alarm Out	N/A	N/A	N/A	N/A
Buzzer	✓	✓	✓	✓
Log	✓	✓	✓	✓
Screen Message	✓	✓	✓	✓
E-mail	-	-	-	-
FTP	-	-	-	-

The general operations are as below:

- ▲▼◀▶
Press these buttons to select the items.
- **Numeric**
Press these buttons to select the alarm input.
- **COPY** (📄)
Press this button to copy the settings of the focus alarm input to all the following alarm inputs. (EX. focus alarm input is 1, its settings will be copied to those of alarm inputs 2-4.)
- **ESC**
Press this button to escape from this screen, and return to Setup Menu display. If the Save dialog is shown, press **ENTER** to exit and save, **ESC** to exit without saving.

Following is a brief description for each item and its specific operations:

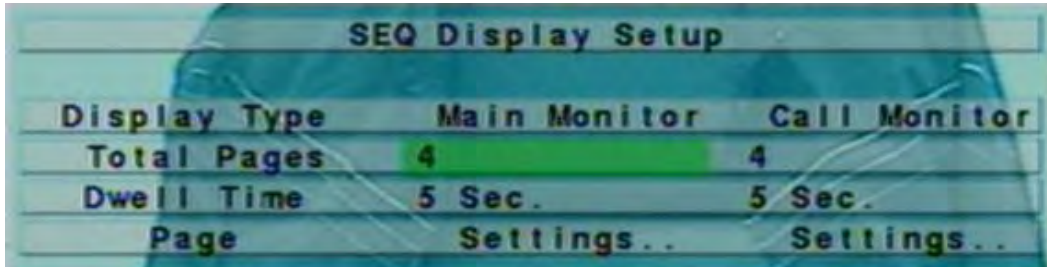
- **Normal State** – press +/- buttons to select **N/A**, **Close** or **Open**. Please check the signal type, normally close or normally open, connected to the alarm input

terminal on the rear panel of the system. If there's no signal connected, please select **N/A** – Not Available, and the following items will not be settable. The default setting is **Open**.

- **Focus Camera** – the camera corresponding to this alarm input.
- **Duration** – response duration to define at most how long (in seconds) the Alarm Out relay and the Buzzer will keep being triggered after this alarm input is triggered. However, the Alarm Out relay and the Buzzer will be reset immediately once this alarm input returns to normal. Press +/- buttons to adjust the value (3 seconds - 60 minutes, discrete, '-' for 'Forever').
- **Goto Preset** – to define the preset position to go to for the Focus Camera if this alarm input is triggered and the Focus Camera is a PTZ camera. For more details about preset locations, please refer to [Chapter 7 PTZ Control](#).
- **Pre-record** – to define how long before this alarm input is triggered the Focus Camera shall be intensively recorded at Pre-record IPS. Press +/- buttons to adjust the value (0-10 seconds, discrete). Please note that the actual pre-record time may be shorter than the value set if the total size of the pre-record pictures exceeds the pre-record buffer size of the system.
- **Post-record** – to define how long after this alarm input is triggered the Focus Camera shall be intensively recorded at Event Record IPS. Press +/- buttons to adjust the value (0 second - 60 minutes, discrete).
- **Alarm Out** – to define which Alarm Output will be triggered when this alarm input is triggered. Press +/- buttons to select none (N/A) or one of the Alarm Outputs (1-2).
- **Buzzer** – to activate the internal Buzzer or not when this alarm input is triggered. Press **ENTER** or +/- to check/uncheck this item. The default setting is “~” - checked.
- **Log** – to log to event logs or not. Press **ENTER** or +/- to check/uncheck this item. The default setting is “~” - checked.
- **Screen Message** – to display the event message on the screen or not. Press **ENTER** or +/- to check/uncheck this item. The default setting is “~” - checked.
- **E-mail** – to send the event e-mail to remote station or not. The e-mail will be sent to the predefined receivers when the event is triggered. Press **ENTER** or +/- to check/uncheck this item. The default setting is “-” - unchecked.
- **FTP** – to send the recorded event video/audio files to FTP server or not. Press **ENTER** or +/- to check/uncheck this item. The default setting is “-” - unchecked.

6.4 SEQ Display Setup

In Setup Menu display, press ▲▼ to change the highlighted option to **SEQ Display**, and then press **ENTER** to call up SEQ Display Setup as shown.



The SEQ Display Setup allows the administrator to define the display pages in SEQ Display for main monitor and call monitor. There are 1 display type - 1-Window for main monitor, and 1 display type for call monitor.

The general operations are as below:

- ▲▼◀▶
Press these buttons to select the items.
- **ESC**
Press this button to escape from this screen, and return to Setup Menu display. If the Save dialog is shown, press **ENTER** to exit and save, **ESC** to exit without saving.

Following is a brief description for each item and its specific operations:

- **Total Pages** – total pages for this SEQ Display Type. The maximum number varies according to the display type. Press +/- buttons to select the desired number from the available list.
- **Dwell Time** – the dwell time (3 ~ 60 seconds, discrete) for each page of this display type. Press +/- buttons to change the value.
- **Page Settings..** – used to set the camera in each viewing window for each page of this SEQ Display Type. Press **ENTER** to call up Display Page Setup as shown.



In Display Page Setup, the split window display for the current page is shown. And the title of the camera for the focus window is highlighted. Following is a brief description for the operations:

- **Numeric**
Press these buttons to change the camera for the current page.
- **+/-**
Press these buttons to change the current page for this SEQ Display Type.
- **ESC**
Press this button to escape from Display Page Setup, and return to SEQ Display Setup.

6.5 Scheduled Record Setup

In Setup Menu display, press ▲▼ to change the highlighted option to **Scheduled Record**, and then press **ENTER** to call up Scheduled Record Setup as shown.



Scheduled Record Setup				
T1				
Weekday	Start	Alarm	Motion	Normal
SUN	00:00	A/V	A/V	A/V
MON	00:00	A/V	A/V	A/V
TUE	00:00	A/V	A/V	A/V
WED	00:00	A/V	A/V	A/V
THU	00:00	A/V	A/V	A/V
FRI	00:00	A/V	A/V	A/V
SAT	00:00	A/V	A/V	A/V

The Scheduled Record Setup allows the administrator to define when and how to record for the system. There are up to 16 time segments (T1 – T16) for each weekday.

The general operations are as below:

- ▲▼◀▶
Press these buttons to select the items. The display will scroll left/right if the selected item is not shown on the screen.
- **COPY** (📄)
Press this button to copy the settings of the focus weekday to all the following weekdays. (EX. focus weekday is TUE, its settings will be copied to those of weekdays WED-SAT.)
- **ESC**
Press this button to escape from this screen, and return to Setup Menu display. If the Save dialog is shown, press **ENTER** to exit and save, **ESC** to exit without saving.

Following is a brief description for each item and its specific operations:

- **Start** – the start time of this time segment, increment at 30 minutes. (The end time of this time segment is implicitly set as the start time of next time segment, or the start time of the first time segment of the same weekday if it's the last one.)

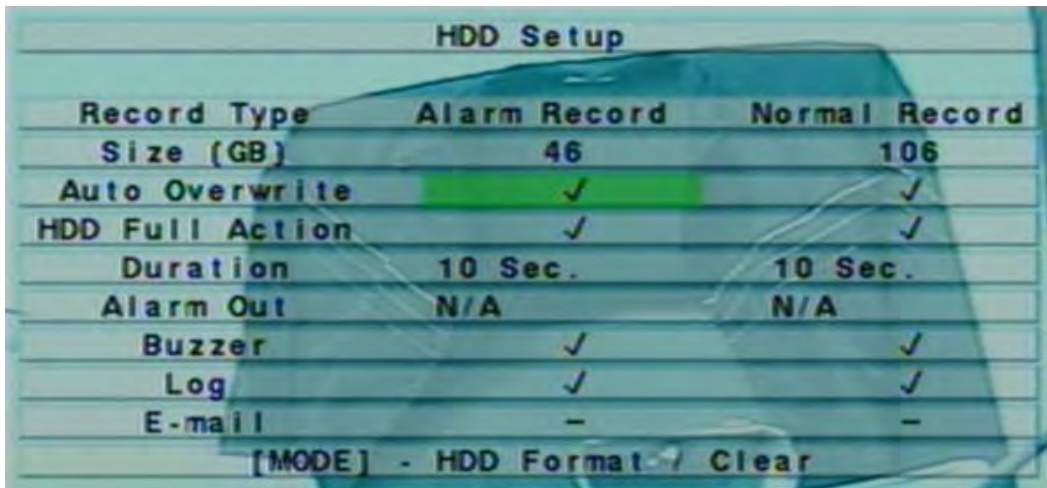
Press +/- buttons to select the desired start time.

Example: If the user sets the start time of T1/MON as 9:00, T2/MON as 18:00, T3-T16/MON as N/A (Not Available), then T1/MON is 9:00-18:00, T2/MON is 0:00-9:00, and 18:00-24:00.

- **Alarm** – record mode (No, Video, or Audio/Video) when certain alarm input is triggered. Press +/- buttons to change the value.
- **Motion** – record mode (No, Video, or Audio/Video) when motion is detected for certain camera. Press +/- buttons to change the value.
- **Normal** – normal record mode, including No, V (Video only), or A/V (Audio/Video). Press +/- buttons to change the value.

6.6 HDD Setup

In Setup Menu display, press ▲▼ to change the highlighted option to **HDD**, and then press **ENTER** to call up HDD Setup as shown.



HDD Setup		
Record Type	Alarm Record	Normal Record
Size (GB)	46	106
Auto Overwrite	✓	✓
HDD Full Action	✓	✓
Duration	10 Sec.	10 Sec.
Alarm Out	N/A	N/A
Buzzer	✓	✓
Log	✓	✓
E-mail	-	-
[MODE] - HDD Format / Clear		

In the surveillance applications, alarm video/audio is much more important than normal video/audio. So, this digital video recorder is designed to allow the user to divide each HDD into alarm partition and normal partition. And, alarm video/audio will be recorded in alarm partition, normal video/audio in normal partition.

The HDD Setup allows the administrator to format/clear each HDD, set Alarm Record size and Normal Record size of each HDD, and define the behaviors for Alarm Record and Normal Record if it reaches the end of the last HDD in the system.

The general operations are as below:

- ▲▼◀▶
Press these buttons to select the items.
- **MODE** => Format/Clear
Press this button to format/clear the HDDs as described in [Section 6.6.1](#).
- **ESC**
Press this button to escape from this screen, and return to Setup Menu display. If the Save dialog is shown, press **ENTER** to exit and save, **ESC** to exit without saving.

Following is a brief description for each item and its specific operations:

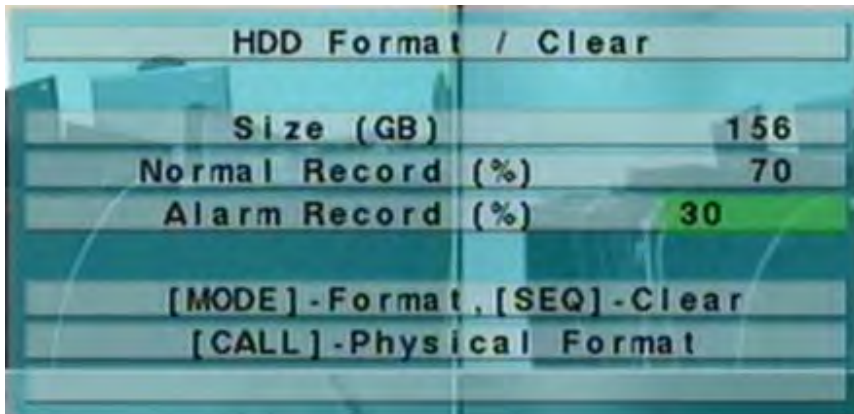
- **Size (GB)** – the total HDD storage in GB (Giga-Byte) for Alarm Record and

Normal Record respectively. This item is just for information. Please refer to [Section 6.6.1](#) for more detailed information and setup of each individual HDD.

- **Auto Overwrite** – automatic overwrite of the recorded video/audio from HDD#1 when the Alarm/Normal Record disk drive capacity reaches the end of the last HDD. If Auto Overwrite is disabled and the Alarm/Normal Record disk drive capacity reaches the end, the system will not overwrite the recorded video/audio, and hence not record Alarm/Normal video/audio, until the user presses the **Alarm Reset** button. Press **ENTER** or +/- to check/uncheck this item. The default setting is “” - checked.
- **HDD Full Action** – actions when Alarm/Normal Record disk drive capacity reaches the end of the last HDD. Press **ENTER** or +/- to check/uncheck this item. The default setting is “” - checked.
- **Duration** – response duration to define at most how long (in seconds) the Alarm Out relay and the Buzzer will keep being triggered after the corresponding partition, Alarm Record or Normal Record, is full. Press +/- buttons to adjust the value (3 seconds - 60 minutes, discrete, ‘-’ for ‘Forever’).
- **Alarm Out** – to define which Alarm Output will be triggered when the corresponding partition, Alarm Record or Normal Record, is full. Press +/- buttons to select none (N/A) or one of the Alarm Outputs (1-2).
- **Buzzer** – to activate the internal Buzzer or not when the corresponding partition, Alarm Record or Normal Record, is full. Press **ENTER** or +/- to check/uncheck this item. The default setting is “” - checked.
- **Log** – to log to event logs or not. Press **ENTER** or +/- to check/uncheck this item. The default setting is “” - checked.
- **E-mail** – to send the event e-mail to remote station or not. The e-mail will be sent to the predefined receivers when the event is triggered. Press **ENTER** or +/- to check/uncheck this item. The default setting is “-” - unchecked.

6.6.1 HDD Format/Clear

In HDD Setup display, press **MODE** to call up HDD Format/Clear screen as shown.



The HDD must be formatted before it can be used to record video/audio. The HDD Format/Clear screen allows the administrator to format and/or clear each HDD, and set the size for Alarm Record partition and Normal Record partition for each HDD. **Please use only HDD with maximum storage size as 500GB, and make sure there's no remote user before formatting the HDD.**

The general operations are as below:

■ **MODE** => Format

Press this button to format the HDD. A confirmation dialog will be shown on the screen, press **ENTER** to confirm, or **ESC** to cancel. **Please note that it would take about 40 seconds to format a brand new HDD.**

Note: If the HDD has not been formatted yet, it will be formatted and partitioned with default record size, 30% for Alarm record and 70% for Normal record. If it has been formatted before, it will be formatted according to the Alarm REC Size (%) and Normal REC Size (%) displayed on the screen, but the previously recorded contents within the new size won't be cleared and will be accessible.

■ **SEQ** => Clear

Press this button to clear the HDD. A confirmation dialog will be shown on the screen, press **ENTER** to confirm, or **ESC** to cancel.

Note: If the HDD has not been formatted yet, it will be formatted and partitioned with default record size, 30% for Alarm record and 70% for Normal record. If it has been formatted (and recorded) before, it will be partitioned according to the Alarm Record Size (%) and Normal Record Size (%) displayed on the screen, and the previously recorded contents will all be

cleared.

■ **CALL => Physical Format**

Press this button to physically format the selected HDD. A confirmation dialog will be shown on the screen, press **ENTER** to confirm, or **ESC** to cancel. **Please note that the recording will be always optimized for performance & lifetime no matter it's for the first time or for the one hundredth time. The formatting would take less than 1 minute. We strongly recommend that the user use this physical format function to format the HDD for the first time.**

Note: The HDD will be physically formatted and partitioned with default record size, 30% for Alarm record and 70% for Normal record. All the previously recorded contents will be cleared.

■ **ESC**

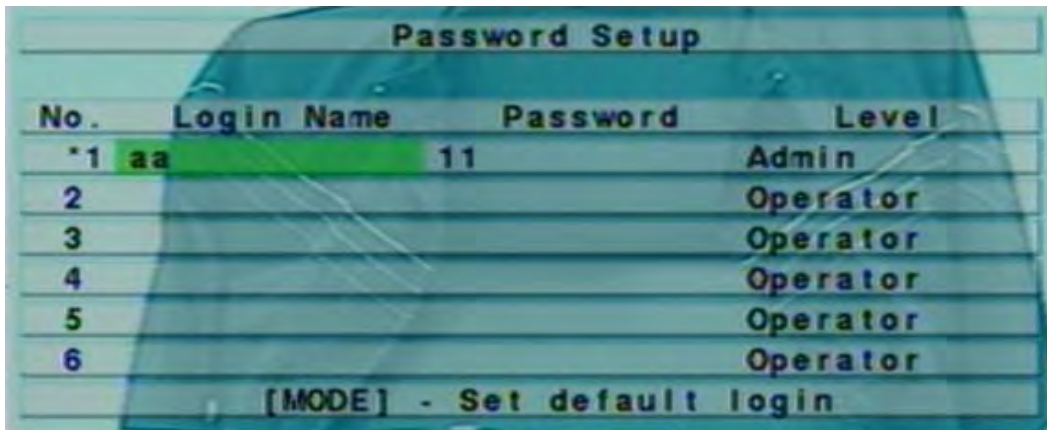
Press this button to escape from this screen, and return to HDD Setup display. If the Save dialog is shown, press **ENTER** to exit and save, **ESC** to exit without saving.

Following is a brief description for each item and its specific operations:

- **Size (GB)** – the total storage in GB (Giga-Byte) for the HDD if it has been formatted. This item is just for information.
- **Alarm Record(%)** – Alarm Record Size (in percentage) for this HDD. Please follow the Text Input method described in [Section 4.1](#) to change the value.
- **Normal Record(%)** – Normal Record Size (in percentage) for this HDD. It equals to (100% - Alarm Record Size). This item is just for information.

6.7 Password Setup

In Setup Menu display, press ▲▼ to change the highlighted option to **Password**, and then press **ENTER** to call up Password Setup as shown.



No.	Login Name	Password	Level
*1	aa	11	Admin
2			Operator
3			Operator
4			Operator
5			Operator
6			Operator

[MODE] - Set default login

The Password Setup allows the administrator to add new users, delete existing ones, and/or modify the user's name, password, and/or level.

There are three password levels in the system, including **Administrator** (highest), **Supervisor**, and **Operator** (lowest). The Operator can operate live video display, the Supervisor live video display, image playback and archive, and the Administrator everything. The system allows up to 18 user accounts.

There is one factory-preset login name/password aa/11 at **Administrator** level. The user can use it to login the system for the first time.

The general operations are as below:

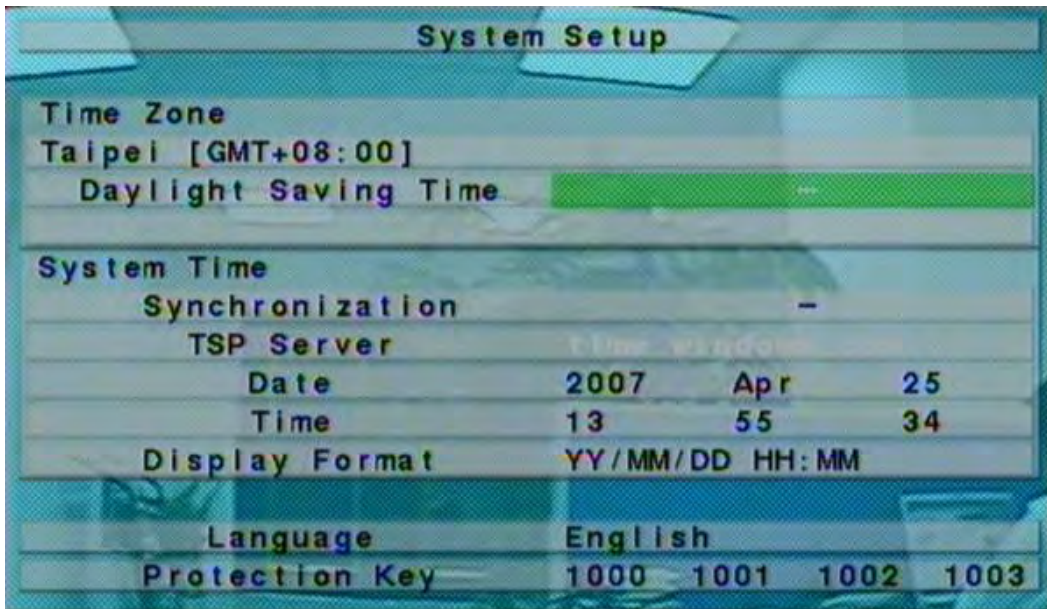
- ▲▼◀▶
Press these buttons to select the items. The display will scroll up/down if the selected item is not shown on the screen.
- **MODE** => Select/Deselect as default
Press this button to select this user as the default one at login, or deselect if this user is the default login user. An asterisk (*) will be shown preceding the number for the default login user. And this login name/password will be the default one each time the login dialog is shown, so the user doesn't bother to enter the text to login the system.
- **ESC**
Press this button to escape from this screen, and return to Setup Menu display. If the Save dialog is shown, press **ENTER** to exit and save, **ESC** to exit without saving.

Following is a brief description for each item and its specific operations:

- **Login Name** – please follow the Text Input method described in [Section 4.1](#) to modify this item.
- **Password** – this item accepts numbers only. Please follow the Text Input method described in [Section 4.1](#) to modify this item.
- **Level** – the password level (**Administrator**, **Supervisor**, or **Operator**) for this user. Press +/- buttons to change the level.

6.8 System Setup

In Setup Menu display, press ▲▼ to change the highlighted option to **System**, and then press **ENTER** to call up System Setup as shown.



The System Setup allows the administrator to set the system time, time zone, time synchronization, language, etc.

The general operations are as below:

- ▲▼◀▶
Press these buttons to select the items.
- **ESC**
Press this button to escape from this screen, and return to Setup Menu display. If the Save dialog is shown, press **ENTER** to exit and save, **ESC** to exit without saving. **Please note that if the selected language is changed, the user will be asked to reboot the system for the newly selected language to take effect.**

Following is a brief description for each item and its specific operations:

- **Time Zone** – press +/- buttons to select the time zone for the system. Please refer to [Appendix C](#) for the time zone table.
- **Daylight Saving Time** – press **ENTER** or +/- to check/uncheck this item. The default value is set by selecting a different time zone, but the user may check/uncheck this item if the default setting is checked.

■ **System Time** –

- **Synchronization** – time synchronized with TSP Server or not. Press **ENTER** or +/- to check/uncheck this item. The default setting is “-” - unchecked.
- **TSP Server** – TSP (Time Synchronization Protocol) server name if Time Synchronization is enabled. The system will try to do time synchronization with the specified TSP server at the system preset interval. Please follow the Text Input method described in [Section 4.1](#) to modify this item.
- **Date** – system date. Press +/- buttons to modify each of these items.
- **Time** – system time. Press +/- buttons to modify each of these items.
- **Display Format** – format used for the system time displayed on the lower-left corner of the main screen. Press +/- buttons to select the desired format.
- **Language** – press +/- buttons to select the language for the system. The languages supported include: **English, Russian, Simplified Chinese, Spanish, Traditional Chinese**, etc.
- **Protection Key** – the protection key for the remote access of the system. Please follow the Text Input method described in [Section 4.1](#) to modify these items.

Note: This protection key will be used for authentication when any remote station wants to connect with the system from Ethernet interface, either LAN or internet. So, the same protection key must be entered to install the remote software if it is to be used to access the system.

6.9 RS-232/422/485 Setup

In Setup Menu display, press ▲▼ to change the highlighted option to **RS-232/422/485**, and then press **ENTER** to call up RS-232/422/485 Setup as shown.

RS - 232 / 422 / 485 Setup		
COM Port	RS - 232	RS - 422 / 485
Device Type	N/A	PTZ
Model	Terminal	Pelco(D-Type)
Baud Rate	1200	9600
Data Bit	5	8
Stop Bit	1	1
Parity	None	None
DVR/Camera ID	0	1
[MODE] - Optional RS-232 Setup		

The RS-232/422/485 Setup allows the administrator to setup RS-232 control port, and RS422 or RS-485 control port. Please refer to the manuals for the connected devices - PTZ cameras or keyboard controllers – to set these items in RS-232/422/485 Setup.

The general operations are as below:

- ▲▼◀▶
Press these buttons to select the items.
- **MODE**
Press this button to call up Optional RS-232 Setup screen if it's built in the DVR. The operations for Optional RS-232 Setup are the same as RS-232/422/485 Setup.
- **ESC**
Press this button to escape from this screen, and return to Setup Menu display. If the Save dialog is shown, press **ENTER** to exit and save, **ESC** to exit without saving.

Following is a brief description for each item and its specific operations:

- **Device Type** – **PTZ**, **Keyboard**, **GPS**, **POS**, or **N/A** (Not Available). Press +/- buttons to change the type. **Please note that PTZ can only be selected for either RS-232 or RS-422/485, but not both.**
- **Model** – PTZ model, Keyboard model, GPS protocol, or POS printer type of the connected devices. The PTZ models supported include **Pelco D protocol Dome**, **SamSung SCC-641P**, **Kalatel Cyber Dome**, **PIH-series**, **Dynacolor**, **Bosch AutoDome**, **Video Trek**, etc. The Keyboard models supported include

Terminal (EX. VT-100) and **Control Protocol**. For Terminal type, please use the corresponding ASCII characters for **code** as described in [Appendix-D](#). The GPS protocol supported is **NMEA0183**. The POS printer types supported include **Epson General** (EX. **Epson-TM200**, **Epson-TMU300**, **Epson-TMU675**, **Epson-TMT882**, **Epson-RPU420**, and **Epson-MD332S**) and **Epson-TMU295**. Press +/- buttons to change the supported model (or protocol).

- **Baud Rate** – press +/- buttons to change the value.
- **Data Bit** – press +/- buttons to change the value.
- **Stop Bit** – press +/- buttons to change the value.
- **Parity** – (**Odd, Even, or None**). Press +/- buttons to change the value.
- **DVR/Camera ID** – for **PTZ/Keyboard** => the device ID for this digital video recorder, and it must not conflict with the other devices connected in the same control port.; for **GPS/POS** => the Camera ID to receive the GPS/POS data. Press +/- buttons to change the ID.

Some GPS Devices Tested

HOLUX GR-213 G-Mouse GPS Receiver
Garmin GPS 18 OEM
GlobalSat BR-355 Cable GPS

6.10 Network Setup

In Setup Menu display, press ▲▼ to change the highlighted option to **Network**, and then press **ENTER** to call up Network Setup as shown.



Network Setup					
Net Type	Static IP				
Static IP	IP Address	192	168	1	15
	Net Mask	255	255	255	0
	Gateway	192	168	1	1
	DNS	192	168	1	252
PPPoE	Username				
	Password				
	DDNS Type	Dynamic			
	URL				
	DDNS Username				
	DDNS Password				

The Network Setup allows the administrator to setup all Ethernet network related parameters. Please check with your network administrator to set these parameters correctly.

The general operations are as below:

- ▲▼◀▶
Press these buttons to select the items.
- **ESC**
Press this button to escape from this screen, and return to Setup Menu display. If the Save dialog is shown, press **ENTER** to exit and save, **ESC** to exit without saving.

Following is a brief description for each item and its specific operations:

- **Net Type** – Static IP, PPPoE, or DHCP. DHCP can only be used for intranet (LAN) access, while Static IP and PPPoE can be used for both internet & intranet access. Press +/- buttons to change the Net Type.
- **IP Address** – Ethernet IP address for the system. To get the static IP address, please contact your local ISP (Internet Service Provider). Please follow the Text Input method described in [Section 4.1](#) to modify these items.
- **Net Mask** – Net Mask for the IP address. Please follow the Text Input method

described in [Section 4.1](#) to modify these items.

- **Gateway** – Gateway IP address for the system. Please follow the Text Input method described in [Section 4.1](#) to modify these items.
- **DNS** – DNS (Domain Name Server) IP address for the system. Please follow the Text Input method described in [Section 4.1](#) to modify these items.
- **Username** – PPPoE username for the system if PPPoE is used. Please follow the Text Input method described in [Section 4.1](#) to modify this item.
- **Password** – PPPoE password for the system if PPPoE is used. Please follow the Text Input method described in [Section 4.1](#) to modify this item.
- **DDNS Type** – Dynamic, Static, or Custom DDNS (Dynamic Domain Name Server) type. Please contact your local DDNS Service Provider to get the DDNS URL, username, and password. Press +/- buttons to change this item.
- **URL** – the URL (Uniform Resource Locators) for the system if PPPoE is used. Please follow the Text Input method described in [Section 4.1](#) to modify this item.
- **DDNS Username** – DDNS username for the system if PPPoE is used. Please follow the Text Input method described in [Section 4.1](#) to modify this item.
- **DDNS Password** – DDNS password for the system if PPPoE is used. Please follow the Text Input method described in [Section 4.1](#) to modify this item.
- **E-mail** – press **ENTER** to call up E-mail Setup. Please refer to [Section 6.10.1](#) for the details.
- **FTP** – press **ENTER** to call up FTP Setup. Please refer to [Section 6.10.2](#) for the details.
- **Adv.** – press **ENTER** to call up Advanced Network Setup. Please refer to [Section 6.10.3](#) for the details.

6.10.1 E-mail Setup

In Network Setup, press **ENTER** to call up E-mail Setup as shown when the highlighted option is **E-mail**.

E-mail Setup	
SMTP Server	msa.hinet.net
Authentication	-
Username	
Password	
Mail From	
Mail To #1	
Mail To #2	
Mail To #3	
Mail To #4	
Mail To #5	
Attachment	N/A

The E-mail Setup allows the administrator to set e-mail related parameters. When an event occurs and E-mail is enabled for the corresponding action, an e-mail will be sent based on the parameters set here.

The general operations are as below:

- ▲▼
Press these buttons to select the items.
- **ESC**
Press this button to escape from this screen, and return to Network Setup display. If the Save dialog is shown, press **ENTER** to exit and save, **ESC** to exit without saving.

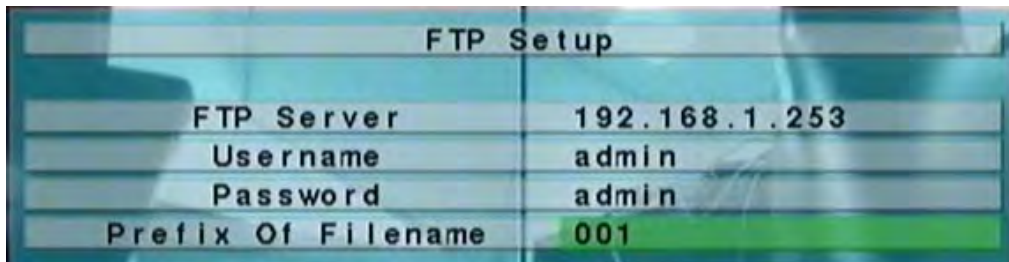
Following is a brief description for each item and its specific operations:

- **SMTP Server** – SMTP mail server name. Please follow the Text Input method described in [Section 4.1](#) to modify this item.
- **Authentication** – whether the SMTP mail server requires authentication. Press **ENTER** or **+/-** to check/uncheck this item.
- **Username** – username if the SMTP mail server requires authentication. Please follow the Text Input method described in [Section 4.1](#) to modify this item.

- **Password** – password if the SMTP mail server requires authentication. Please follow the Text Input method described in [Section 4.1](#) to modify this item.
- **Mail From** – the e-mail address of this DVR unit, i.e. the sender of the e-mails originated from the triggered events. Please follow the Text Input method described in [Section 4.1](#) to modify this item.
- **Mail To #1-5** – the receivers' e-mail addresses. The system can send the e-mails originated from the triggered events to up to 5 different receivers. Please follow the Text Input method described in [Section 4.1](#) to modify these items.
- **Attachment** – attached picture for the e-mail sent. The value could be (N/A, Original picture, QCIF picture). Press +/- buttons to change this item.

6.10.2 FTP Setup

In Network Setup, press **ENTER** to call up FTP Setup as shown when the highlighted option is **FTP**.



The FTP Setup allows the administrator to set FTP related parameters. When an event occurs and FTP is enabled for the corresponding action, the recorded video/audio for that event will be sent to the FTP server based on the parameters set here.

The general operations are as below:

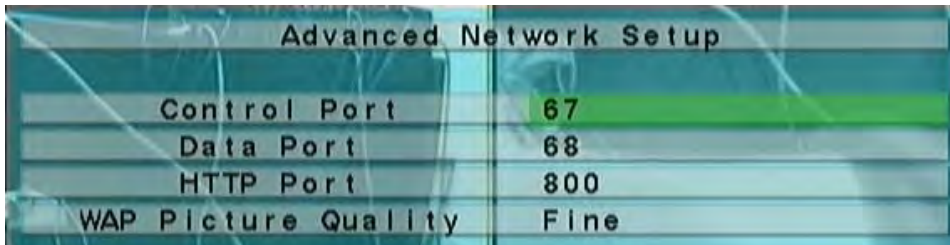
- ▲ ▼
Press these buttons to select the items.
- **ESC**
Press this button to escape from this screen, and return to Network Setup display. If the Save dialog is shown, press **ENTER** to exit and save, **ESC** to exit without saving.

Following is a brief description for each item and its specific operations:

- **FTP Server** – FTP server web/IP address. Please follow the Text Input method described in [Section 4.1](#) to modify this item.
- **Username** – username for this DVR unit in the FTP server. Please follow the Text Input method described in [Section 4.1](#) to modify this item.
- **Password** – password for this DVR unit in the FTP server. Please follow the Text Input method described in [Section 4.1](#) to modify this item.
- **Prefix Of Filename** – the prefix of the filenames for the files sent to the FTP server. If it's empty, the filenames will be "cam."; if not, the filenames will be "Prefix-cam.". For example, if the prefix is "DVR01", then the filenames will be "DVR01-cam.". Please follow the Text Input method described in [Section 4.1](#) to modify this item.

6.10.3 Advanced Network Setup

In Network Setup, press **ENTER** to call up Advanced Network Setup as shown when the highlighted option is **Adv.**.



The Advanced Network Setup allows the administrator to set advanced network parameters. **If the user is not familiar with network administration, please DO NOT modify the items in this dialog.**

The general operations are as below:

- ▲▼
Press these buttons to select the items.
- **ESC**
Press this button to escape from this screen, and return to Network Setup display. If the Save dialog is shown, press **ENTER** to exit and save, **ESC** to exit without saving.

Following is a brief description for each item and its specific operations:

- **Control Port** – the control port for remote access. The default value is **67**. Please follow the Text Input method described in [Section 4.1](#) to modify this item.
- **Data Port** – the data port for remote access. The default value is **68**. Please follow the Text Input method described in [Section 4.1](#) to modify this item.
- **HTTP Port** – the HTTP (web page) port for remote access. The default value is **80**. Please follow the Text Input method described in [Section 4.1](#) to modify this item.
- **WAP Picture Quality** – the WAP picture quality if WAP access is supported for the DVR. Press +/- buttons to change the value.

Note: If the **Control Port** or **Data Port** is not available or accessible during remote access, the system will reset the ports to their default values, i.e. **67/68**.

7. PTZ Control

The digital video recorder supports a variety of PTZ cameras. The user can easily control the PTZ cameras through the operations described in this Chapter if those PTZ cameras have been connected and setup correctly. Please refer to [Section 3.2 Optional Connections](#) for the connections. Please refer to [Section 6.1 Pre-Camera Setup](#) to set the PTZ ID of each PTZ camera, and [Section 6.9 RS-232/422/485 Setup](#) to setup the control port.

If a camera is also a PTZ camera, there will be an asterisk (*) preceding its title in its video window in split-window display. Please press **PTZ** button to enter PTZ control mode if the focus camera is a PTZ camera. The **asterisk (*)** will be **blinked** to indicate that the camera is now in PTZ control mode.

In PTZ control mode, the user's operations can be divided into general operations and miscellaneous function specific operations, and are described as the followings:

General operations:

- **PTZ**
Press this button to exit PTZ control mode. The asterisk (*) will be changed back to normal color.
- **▲▼**
Press these buttons to tilt the camera up/down.
- **◀▶**
Press these buttons to pan the camera left/right.
- **ZOOM (Q) +/-**
Press these buttons to zoom in/out the camera.
- **GOTO**
Press this button to move the camera to the preset position. The **keypad hint** will be shown. Press numeric buttons **0-9** to enter the number of the preset position to move the camera to. The range of the preset positions is 00-99.
- **NEXT**
Press this button for the next miscellaneous function. The miscellaneous functions include Focus, Iris, Auto PAN, SEQ, Preset, and Pan Speed. And the active one will be shown on the lower right corner of the screen. The miscellaneous function specific operations are described in the following table.

Miscellaneous function specific operations:

Active function	Operations	Descriptions
Focus	+/- ENTER	focus far/near auto focus
Iris	+/-	Iris increase/decrease
Auto Pan (3)	+/- ENTER * #	Auto pan speed is shown in parenthesis increase/decrease speed start/stop Auto Pan set start position set end position
SEQ (5 sec.)	+/-, NUMBER ENTER	SEQ dwell time is shown in parenthesis. If SEQ mode is on, the camera will goto preset position 0-9 (or 1-10) sequentially. change dwell time start/stop SEQ mode, an asterisk (*) will be shown if SEQ mode is on
Preset (1)	+/-, NUMBER ENTER	Preset location is shown in parenthesis change Preset location set Preset location
Pan Speed (3)	+/-	Manual pan speed is shown in parenthesis increase/decrease speed

8. Search/Playback/Archive (Administrator, Supervisor)

There are five ways to search the recorded video/audio for playback:

- (a) Search by time,
- (b) Search by event,
- (c) **Smart search**,
- (d) Search archived files, and
- (e) **POS search**.

In split-window display, press **SEARCH** button to call up Search Menu display as shown.

The user's operations are described as the followings:

- ▲ ▼

Press these buttons to change the highlighted item.

- **ENTER**

Press this button to enter the corresponding Search display of the highlighted item. The Search displays and their operations are described in the following sections, followed by the playback operations of the searched video/audio.

- **ESC**

Press this button to escape from Search Menu display, and return to split-window display.

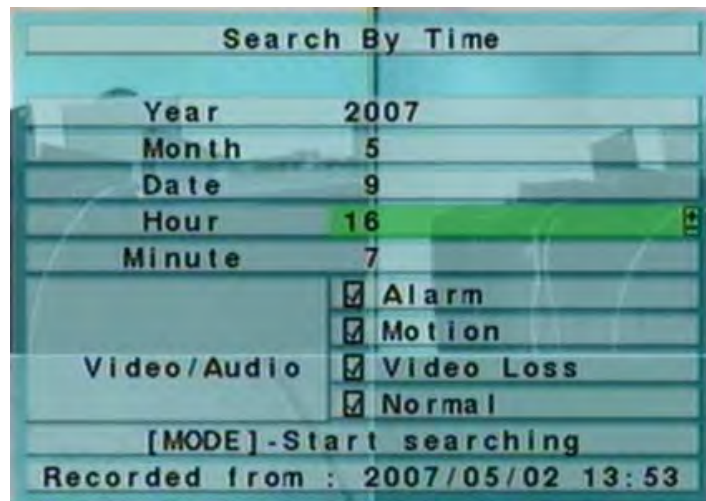


Note: For this series of DVRs, the system recording rate may be lowered by playback.

8.1 Search By Time

The screen for Search By Time is shown on the right side:

The Status field will show the 'Recorded from' time based on the selected Video/Audio before searching - alarm partition if any of Alarm, Motion, or Video Loss, is checked, and normal partition if Normal is checked.



The general operations are as below:

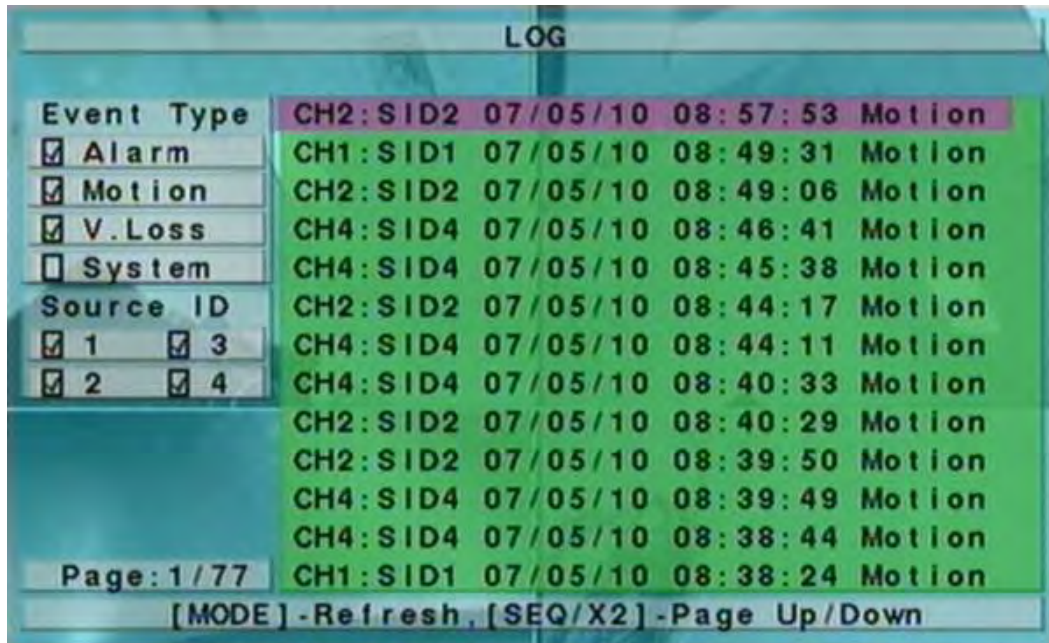
- ▲▼
Press these buttons to select the items.
- ESC
Press this button to escape from this screen, and return to split-window display.
- **SEARCH / MODE**
Press this button to start searching the recorded video/audio with the selected search time and video/audio type **for playback**. The search result will be shown on the bottom of this dialog if it failed. **If there's no camera in playback mode, all the cameras in the current split window will be set to playback mode.**
- **Play Button (▶/||)**
Press this button to start playing the recorded video/audio with the selected search time and video/audio type. The search result will be shown on the bottom of this dialog if it failed. **If there's no camera in playback mode, all the cameras in the current split window will be set to playback mode.**
- **Copy Button (📄)**
Press this button to **backup (copy)** the selected type of recorded video/audio starting from the **Search Time** (described below) in the HDD to the connected backup device **without playback**. The Backup display (described in [Section 8.6](#)) will be shown. **Please note that this kind of backup is performed in the background, and the user can still do almost all the operations.**

Following is a brief description for each item and its specific operations:

- **Search Time** – (**Year, Month, Date, Hour, Minute**) for the recorded video/audio. The playback ([or backup](#)) will start from the time entered here when the user press the playback buttons ([or Copy button](#)) later. Press +/- buttons to modify each item.
- **Video/Audio** – (**Alarm, Motion, Video Loss, Normal**). Check the types of the recorded video/audio you want to search for playback. Press **ENTER** or +/- to check/uncheck each item.

8.2 Search By Event / Log Display

The screen for Search By Event - Log display, is shown below:



The screenshot shows a terminal-style interface titled "LOG". On the left side, there are two filter sections. The "Event Type" section has checkboxes for Alarm (checked), Motion (checked), V.Loss (checked), and System (unchecked). The "Source ID" section has checkboxes for 1, 2, 3, and 4, all of which are checked. The main area displays a list of event logs with columns for Channel (CH), Source ID (SID), Date (07/05/10), Time (HH:MM:SS), and Event Type (Motion). The logs are listed from top to bottom: CH2:SID2 (08:57:53), CH1:SID1 (08:49:31), CH2:SID2 (08:49:06), CH4:SID4 (08:46:41), CH4:SID4 (08:45:38), CH2:SID2 (08:44:17), CH4:SID4 (08:44:11), CH4:SID4 (08:40:33), CH2:SID2 (08:40:29), CH2:SID2 (08:39:50), CH4:SID4 (08:39:49), CH4:SID4 (08:38:44), and CH1:SID1 (08:38:24). At the bottom, it shows "Page: 1 / 77" and navigation instructions: "[MODE] - Refresh, [SEQ/X2] - Page Up/Down".

Event Type	CH	SID	Date	Time	Event Type
<input checked="" type="checkbox"/>	CH2	SID2	07/05/10	08:57:53	Motion
<input checked="" type="checkbox"/>	CH1	SID1	07/05/10	08:49:31	Motion
<input checked="" type="checkbox"/>	CH2	SID2	07/05/10	08:49:06	Motion
<input checked="" type="checkbox"/>	CH4	SID4	07/05/10	08:46:41	Motion
<input type="checkbox"/>	CH4	SID4	07/05/10	08:45:38	Motion
Source ID	CH2	SID2	07/05/10	08:44:17	Motion
<input checked="" type="checkbox"/> 1 <input checked="" type="checkbox"/> 3	CH4	SID4	07/05/10	08:44:11	Motion
<input checked="" type="checkbox"/> 2 <input checked="" type="checkbox"/> 4	CH4	SID4	07/05/10	08:40:33	Motion
	CH2	SID2	07/05/10	08:40:29	Motion
	CH2	SID2	07/05/10	08:39:50	Motion
	CH4	SID4	07/05/10	08:39:49	Motion
	CH4	SID4	07/05/10	08:38:44	Motion
	CH1	SID1	07/05/10	08:38:24	Motion

There are four different types of event logs, including Alarm, Motion, Video Loss, and System. And up to **1000** most recent event logs can be stored in the system.

The general operations are as below:

- ▲▼◀▶
Press these buttons to select the items.
- ESC
Press this button to escape from this screen, and return to split-window display.
- MODE => Refresh
Press this button to refresh the log display. If there are new event logs after the screen is last updated, the log list shown will be updated accordingly.
- SEQ => Page Up
- X2 => Page Down
Press SEQ/X2 to Page Up/Down the Log display.
- Numeric (ENTER)
Press these buttons to select the display page of the event logs, the log list will also be updated. (Please note that there are only 1/2/3/4 available for the keypad on the front panel.)

Following is a brief description for each item and its specific operations:

- **Event Type** – the type of the events (**Record, Alarm, Motion, Video Loss, System**) to be shown in the log list. The Event Type “System” includes all system related events, such as power on/off, and will not trigger recording. Press **ENTER** or +/- to check/uncheck the event type for the log list.
- **Source ID** – the source which triggered the event. For Alarm, it’s the alarm input number; for Motion and Video Loss, it’s the camera number. It’s used to filter the events to be shown in the log list. Press **ENTER** or +/- to check/uncheck each item.
- **Log List** – the event logs according to the Event Type and Source ID selected. The user may (1) press **ENTER** to enter Event Playback display of the selected event log in this list, (2) press **Play Button (▶/||)** to playback it directly, or (3) press **Copy Button (📄)** to **backup (copy)** the selected recorded video/audio to the connected backup device **without playback**. The Backup display (described in [Section 8.6](#)) will be shown. **Please note that this kind of backup without playback is performed in the background, and the user can still do almost all the operations.** Please refer to [Section 8.7 Playback For Search By Event](#) for the detailed operations for event playback.

8.3 Smart Search

The screen for Smart Search is shown below:

Smart Search			
Target camera		2007/05/10	08:08:00
1 Camera01 Area...		2007/05/10	08:08:03
Time	Start	End	
Year	2007	2007	2007/05/10 08:08:07
Month	5	5	2007/05/10 08:08:11
Date	10	10	2007/05/10 08:08:16
Hour	7	9	2007/05/10 08:27:32
Minute	2	2	2007/05/10 08:27:37
15 matched file(s) found.		2007/05/10	08:37:33
Page: 1 / 2		2007/05/10	08:37:37
[MODE]-Start Searching		2007/05/10	08:38:18
[SEQ/X2]-Page Up/Down		2007/05/10	08:38:22
		2007/05/10	09:01:38
		2007/05/10	09:01:42

The Status field will show the 'Recorded from' time in the HDDs before searching or the search result after searching.

The general operations are as below:

- ▲▼◀▶
Press these buttons to select the items.
- ESC
Press this button to escape from this screen, and return to split-window display.
- **SEARCH / MODE**
Press this button to start searching the recorded video/audio with the selected search time, camera, and motion masks. The search result will be shown on the right half of this dialog. **To prevent the system from overloading by Smart Search, up to 500 matched files or 100 GB of HDD storage for each record partition, alarm or normal, from the start time will be searched.**
- SEQ => Page Up
- X2 => Page Down
Press SEQ/X2 to Page Up/Down the Matched file display.
- **Numeric (ENTER)**

Press these buttons to select the display page of the matched files in the list.
(Please note that there are **only 1/2/3/4 available for the keypad on the front panel.**)

Following is a brief description for each item and its specific operations:

- **Camera ID** – the camera to be searched for matched files. Its title is shown on its right side. Press +/- buttons to change the camera ID.
- **Start/End Time** – (**Year, Month, Date, Hour, Minute**) for the recorded video/audio. The files will be searched from the start time to the end time entered here when the user press the **SEARCH/MODE** button later for the matched files. Press +/- buttons to modify each item.
- **Matched file List** – the matched files (HDD ID & time are shown) according to the selected search time, camera, and motion masks. The files are shown from the oldest to the newest, and its page number is shown on the lower-left corner. The user may (1) press **ENTER** to enter Smart Search Playback display of the selected matched file in this list, (2) press **Play Button (▶/||)** to playback it directly, or (3) press **Copy Button (📄)** to **backup (copy)** the selected recorded video/audio to the connected backup device **without playback**. The Backup display (described in [Section 8.6](#)) will be shown. **Please note that this kind of backup without playback is performed in the background, and the user can still do almost all the operations. Please also note that the playback (or backup) can walk across all the matched files.** Please refer to [Section 8.8 Playback For Smart Search](#) for the detailed operations for smart search playback.
- **Area..** – the motion areas for the camera to be searched for matched files. **The files with motion covering all the motion areas will be selected as matched.** Press **ENTER** in **Area..** to call up Motion Area Setting screen as shown below. In Motion Area Setting screen, the video area is divided into many small grids, and the **gray areas** shown on the screen are the areas which will be checked for matched motion. Besides, there is a (yellow) Mask window. **Please note that based on the search algorithm, there will be more matched files for smaller areas.**

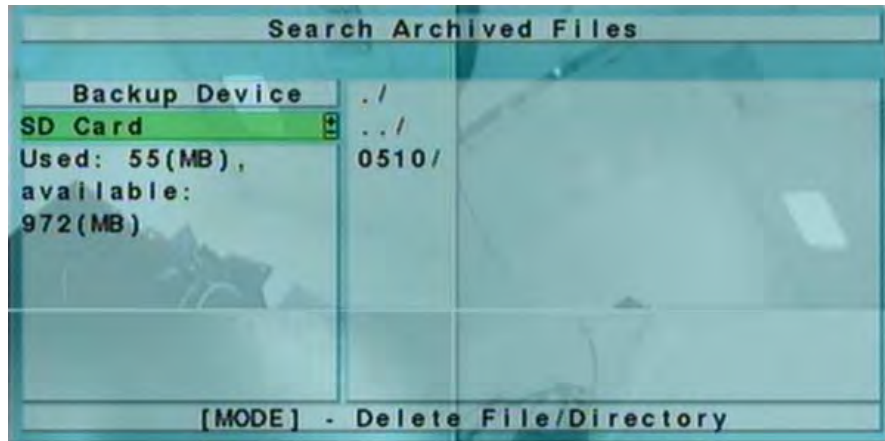


Following is a brief description for the operations:

- ▲▼◀▶
Press these buttons to move the Mask window.
- +/-
Press these buttons to resize the Mask window.
- **ENTER**
Press this button to set/reset the area under the Mask window. The area set will be shown with semi-transparent gray area.
- **MODE**
Press this button to set/reset the whole video area.
- **ESC**
Press this button to escape from Motion Area Setting screen, and return to Smart Search screen.

8.4 Search Archived Files

The screen for Search Archived Files is shown below:



The operations are as below:

- ▲▼◀▶
Press these buttons to select the items.
- ESC
Press this button to escape from this screen, and return to split-window display.

Following is a brief description for each item and its specific operations:

- **Backup Device** – press **ENTER** to call up Backup Device dialog (if there's no Backup device connected).
- **Disk Storage** – to select the disk storage to search the archived files. Press +/- buttons to select the available storage.
- **Archived File List** – the archived files in the selected Disk Storage. Please select the file, and then press **ENTER** to enter Archived File Playback display of the selected file in this list, or press **Play Button (▶/||)** to playback it directly. Please refer to [Section 8.9 Playback For Archived Files](#) for the detailed operations. Besides, you may press **MODE** to delete the selected file.

Note : The format of the filename is **camNN-YYYYMMDD-hhmmss.m4v**, where **NN** stands for camera number, **YYYY** year, **MM** month, **DD** date, **hh** hour, **mm** minute, and **ss** second.

8.5 POS Search

The screen for POS Search is shown below:

POS Search			
Camera	1		2007/09/28 08:47:57
Key word	2000		2007/09/28 08:50:13
Time	Start	End	2007/09/28 09:04:54
Year	2007	2007	2007/09/28 09:05:52
Month	9	9	2007/09/28 09:09:26
Date	28	28	2007/09/28 09:15:29
Hour	8	11	2007/09/28 09:17:38
Minute	46	46	2007/09/28 09:22:02
39 matched file(s) found.			2007/09/28 09:22:57
			2007/09/28 09:23:30
			2007/09/28 09:26:12
			2007/09/28 09:29:13
			2007/09/28 09:29:18
Page: 1 / 3			
[MODE]-Start Searching, [SEQ/X2]-Page Up/Down			

The Status field will show the 'Recorded from' time in the HDDs before searching or the search result after searching.

The general operations are as below:

- ▲▼◀▶

Press these buttons to select the items.

- ESC

Press this button to escape from this screen, and return to split-window display.

- **SEARCH / MODE**

Press this button to start searching the recorded video/audio with the selected search time, camera, and key word. The search result will be shown on the right half of this dialog. **To prevent the system from overloading by POS Search, up to 500 matched files or 100 GB of HDD storage for each record partition, alarm or normal, from the start time will be searched.**

- SEQ => Page Up

- X2 => Page Down

Press SEQ/X2 to Page Up/Down the Matched file display.

- **Numeric (ENTER)**

Press these buttons to select the display page of the matched files in the list. (Please note that there are **only 1/2/3/4 available for the keypad on the front panel.**)

Following is a brief description for each item and its specific operations:

- **Camera ID** – the camera to be searched for matched files. Press +/- buttons to change the camera ID.
- **Key word** – the key word for the POS data of the camera to be searched for matched files. **The POS data containing the key word will be selected as matched.** If key word is empty, all POS data will be selected. Please follow the Text Input method described in [Section 4.1](#) to input this item.
- **Start/End Time** – (**Year, Month, Date, Hour, Minute**) for the POS data for the recorded video/audio. The files will be searched from the start time to the end time entered here when the user press the **SEARCH/MODE** button later for the matched files. Press +/- buttons to modify each item.
- **Matched file List** – the matched files (date & time are shown) according to the selected search time, camera, and key word. The files are shown from the oldest to the newest, and its page number is shown on the lower-left corner. The user may (1) press **ENTER** to enter POS Search Playback display of the selected matched file in this list, (2) press **Play Button (▶/||)** to playback it directly, or (3) press **Copy Button (📄)** to **backup (copy)** the selected recorded video/audio to the connected backup device **without playback**. The Backup display (described in [Section 8.6](#)) will be shown. **Please note that this kind of backup without playback is performed in the background, and the user can still do almost all the operations.** Please refer to [Section 8.10 Playback/Archive For POS Search](#) for the detailed operations for POS search playback.

8.6 Playback/Archive For Search By Time

In split-window display, press **MODE** button to change circularly the live/playback mode for the focus window and the other windows that form a rectangle on the screen. The video windows for the windows in playback mode are grayed, while those in live mode display live video.

Please refer to [Section 4.3 Basic Operations](#) for how to change the camera(s) in the playback windows(s). After the playback windows and cameras are all set as you want, you may use the following buttons to control the playback:

- **Play/Pause (▶/||)**
Press this button to play the recorded video/audio searched at forward speed 1X, or pause the playback. If the playback is paused, press this button again to resume playing. Note that audio can only be played at forward speed 1X.
- **Stop (■)**
Press this button to stop playing the recorded video/audio. If the user press ▶/|| button later, the playback will start from the beginning.
- **Fast Forward (▶▶/▶ on the remote controller, ▶ on the front panel)**
Press this button for fast forward playback. Each time this button is pressed, the forward playback speed will become faster, from 2X, 4X, 8X, up to 16X, and then back to 2X.
- **Fast Backward (◀◀/◀ on the remote controller, ◀ on the front panel)**
Press this button for fast backward playback. Each time this button is pressed, the backward playback speed will become faster, from 2X, 4X, 8X, up to 16X, and then back to 2X.
- **Single Step (▶|/▼ on the remote controller, ▼ on the front panel)**
Press this button to play the recorded images frame by frame.
- **ENTER**
Press this button to display the GPS/POS data if there's GPS/POS data accompanied with the playback camera. Please select the Type (GPS or POS), Position, Background, Rows, and number of Characters on the screen, and then press **ENTER** to display the GPS/POS data, or **ESC** to cancel. Press **ENTER** again to not display it.
- **Copy (📄)**
Press this button to copy or stop copying the playback video/audio to the storage device connected to the USB port. The **Backup display** will be shown as below.



Following is a brief description for the operations in Backup display:



Press these buttons to select the items.

■ **Copy Button** (📄)

Press this button to start backup (copy) or apply the revised settings if it's copying, and return to the previous display. There will be a **Copy** icon on the lower-right corner indicating that the selected video/audio is being archived to the storage device.

■ **Stop** (■)

Press this button to stop copying and return to the previous display. The **Copy** icon will be disappeared.

■ **ESC**

Press this button to cancel, and return to the previous display.

The description for each item and its specific operations is as below:

- **Backup Device** – the backup device connected to the system. Press **ENTER** on the left button to call up **Backup Device dialog** if there's no backup device connected. Press +/- buttons on the right selection to select the connected device. **Please follow the steps described in [Section 5.4 Backup Device](#) to connect the backup device before copying.**

- **Backup Speed** – 1-9, with 1 the lowest speed, 9 the highest speed. Press +/- buttons to select the value.

- **Directory** – the directory in the backup device to store the archived files. Please follow the Text Input method described in [Section 4.1](#) to input the directory.
- **Cameras** – the video/audio of the cameras to be archived. Press **ENTER** or +/- to select/deselect each of the selectable cameras. **If the camera with GPS data is selected, the GPS data will be saved with the camera video in the same file. The user may save GPS data only (without saving camera video) by selecting GPS.**
- **GPS File Format** – for the backup of GPS data only. The supported formats are **TXT** and **KML**. Press +/- buttons to select the value.
- **End Time** – (Year, Month, Date, Hour, Minute) for the recorded video/audio for the **backup without playback** of **Search By Time**. The files will be backup from the start time to the end time entered here when the user press the **COPY** button to start copying. Press +/- buttons to modify each item.

Except the playback buttons, the user can still do all the other operations in split-window display as if there is no playback. Please refer to [Section 4.3 Basic Operations](#) for the operations of the other buttons.

Note : The format of the GPS filename is **YYYYMMDD-hhmmss.txt (or .kml)**, where **YYYY** stands for year, **MM** month, **DD** date, **hh** hour, **mm** minute, and **ss** second. GPS file can be displayed in the archived file list, but cannot be played. Please use GPS applications such as Google Earth, PaPaGO, etc. to read/convert its contents.

8.7 Playback/Archive For Search By Event

In Log display, press **ENTER** to enter Event Playback display of the selected event log, or press **Play Button (▶/||)** to playback it directly. This display is the same as full screen display of the main display, and the playback buttons are effective.

The operations are as below:

- **Playback Buttons (▶/||, ■, ▶▶, ◀◀, ▶|, 📄, ENTER)**
These buttons are all the same as in [Section 8.6 Playback/Archive For Search By Time](#).
- **The Other Buttons**
All the other buttons are the same as in [Section 4.3 Basic Operations](#).

8.8 Playback/Archive For Smart Search

In Smart Search display, press **ENTER** to enter Smart Search Playback display of the selected matched file, or press **Play Button (▶/||)** to playback it directly. **Please note that the playback can walk across all the (up to 500 per record partition) matched files.** So, it's not necessary for the user to repeat the process of Smart Search & Playback just for a single file. This display is the same as full screen display of the main display, and the playback buttons are effective.

The operations are as below:

- **Playback Buttons (▶/||, ■, ▶▶, ◀◀, ▶|, 📄, ENTER)**
These buttons are all the same as in [Section 8.6 Playback/Archive For Search By Time](#).
- **▲**
At playing the video, press this button to call up (show) or hide the Motion Areas set by the user.
- **The Other Buttons**
All the other buttons are the same as in [Section 4.3 Basic Operations](#).

8.9 Playback For Archived Files

In Search Archived Files display, press **ENTER** to enter Archived File Playback display of the selected file, or press **Play Button (▶/||)** to playback it directly. This display is the same as full screen display of the main display, and the playback buttons are effective.

The operations are as below:

- **Playback Buttons (▶/||, ■, ▶▶, ◀◀, ▶|, ENTER)**
These buttons are all the same as in [Section 8.6 Playback/Archive For Search By Time](#). Please note that **COPY** button (📄) is not effective in this display.
- **The Other Buttons**
All the other buttons are the same as in [Section 4.3 Basic Operations](#).

8.10 Playback/Archive For POS Search

In POS Search display, press **ENTER** to enter POS Search Playback display of the selected matched file, or press **Play Button (▶/||)** to playback it directly. This display is the same as full screen display of the main display, and the playback buttons are effective.

The operations are as below:

- **Playback Buttons (▶/||, ■, ▶▶, ◀◀, ▶|, 📄, ENTER)**
These buttons are all the same as in [Section 8.6 Playback/Archive For Search By Time](#).
- **The Other Buttons**
All the other buttons are the same as in [Section 4.3 Basic Operations](#).

9. Remote Access

9.1 PC Remote Access

The digital video recorder can be accessed by using a web browser installed on a PC if this unit is connected to a network, either internet or intranet.

Before Logging On

Before accessing this unit through web browser, please make sure the followings (**For most PCs, only step 4 & 7 is needed!**):

1. This unit is connected to the network correctly, and the configurations are all setup correctly. Please refer to [Section 6.10 Network Setup](#) for the detailed configurations.
2. **DirectX® End-User Runtime 9.0** or above has been installed in your PC successfully. If not, please logon to <http://www.microsoft.com> to get the free download of it.
3. **Windows XP KB319740 Package** has been installed in your PC successfully if the PC is running **Windows XP SP2**. If not, please logon to <http://www.microsoft.com/downloads/details.aspx?FamilyId=9B5EDFC8-A4BB-4080-9063-6518166E2DAB&amp;displaylang=en> to get the free download of it, or install it from the corresponding directory in the CD. (This package is a bug fix for Windows XP SP2.)
4. The domain name or IP address of the digital video recorder has been set as **trusted web site** in your PC, and the **(https:) server verification** for trusted web site is **unchecked**. If not, please go to Tools->Options->Security in your I.E. to do the settings. **For I.E. 7, please set the Security level for this zone to Low.**
5. The ActiveX control in your PC is not disabled. If you are not sure, please go to Tools->Options->Security->Custom in your I.E. to enable ActiveX control.
6. Port 67 (control port) or port 68 (data port) is not blocked out by your router or ISP (Internet Service Provider).
7. If the PC has used I.E. to access earlier software version of DVR, please go to Tools->Options->General in your I.E. to **delete “Temporary Internet files” and all offline contents.**
8. To have better look-&-feel for your PC, please go to Start->Setup->Control, and select Display->Visual Style->Windows XP Style.
9. Please go to Start->Setup->Control, select Display->Settings, and set the Screen

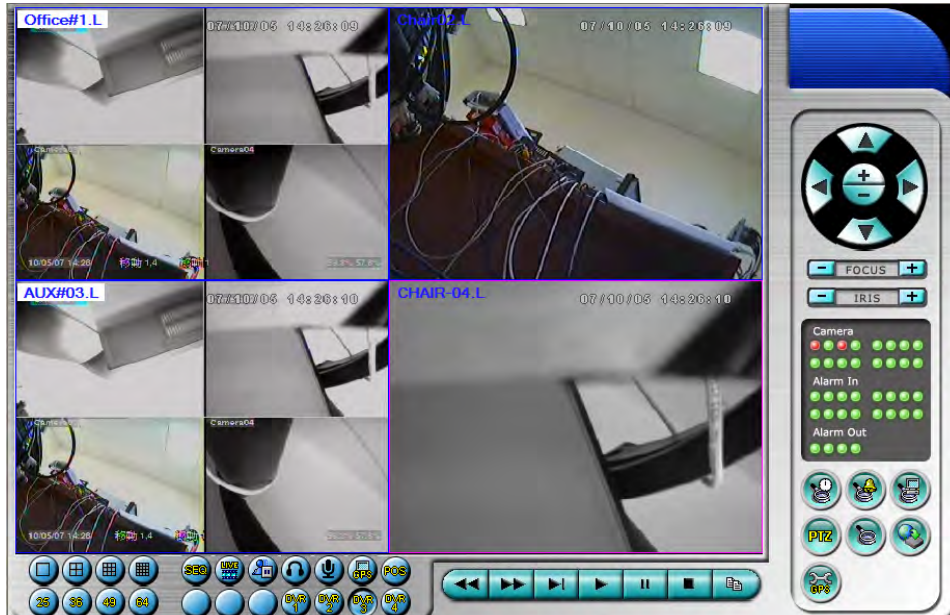
Resolution to at least 1024x768 and Color to 32-bit.

Logon

After the above-mentioned items have been done correctly, restart your web browser and enter the domain name or IP address (EX. <http://192.168.1.100> if HTTP port is 80, or <http://192.168.1.100:800> if HTTP port is 800) of the digital video recorder in the Location/Address field of the web browser. The plug-in software in the system will be downloaded and run automatically in the web browser. **Please note that up to 6 users can logon this DVR simultaneously.**

Remote Display and Operations

After the plug-in software is downloaded and run in the web browser, you will be asked (1) to install redistributable software, and (2) for ActiveX control to interact with your PC. Please select Yes, and the remote login display will be shown. **Please note that the PC user must have system administrator password for the PC; otherwise, the process will fail, and an error dialog will be shown.** For some PCs, it may be necessary to click in the window with the message in red color, but outside the Login Dialog before the next step. Please enter the correct login name and password (and control/data port if they have been changed) for the DVR to login the system. And the main remote display will be shown as below.



The video images can be displayed in several types of split-window screens, including 1/4/9/16-Window for single DVR and 25/36/49/64 for multiple DVRs. And the focus window is surrounded by a frame border. In addition to the video windows, there are different icons on the lower corner and the right corner of the screen for status display and control. (The “L” following the camera title stands

for Live display, “.P” for Playback, and the camera title with white background has detected motion.)

Note 1: The frame rate is limited by the bandwidth of the network and the pre-record IPS of the camera ([Section 6.2](#)).

Note 2: The picture quality depends on the recording resolution and recording quality of the camera ([Section 6.2](#)).

When the user leaves I.E., he/she may be asked to save changes to files, please click on OK or Yes to save the changes. The operations and descriptions for these icons are as below:

- In video window, right-click the mouse button to call up Camera/Playback/Print Dialog. (Left) click on Playback or Camera number to change the window to the corresponding camera and live/playback mode. The user may also click on the “Print” button to print the video to the printer, or “Snapshot” the video.



Click on these icons for 1/4/9/16/25/36/49/64-Window display.



Click on this icon to switch to or return from SEQ display mode.



Click on this icon to toggle between live mode and playback mode for all the video windows.



Click on this icon to freeze/unfreeze the video images for all the video windows.



Click on this icon to enable/mute the audio input from the PC, button down for enable, button up for mute. If enabled, the audio input from the PC will be sent to the DVR. The default setting is ‘mute’. (supported since V2.00.)



Click on this icon to enable/mute the audio output from the camera for the focus window, button down for enable, button up for mute. The default setting is 'mute'.



Click on this icon to show/hide the GPS data for (1) the selected DVR, or (2) the DVR for the focus camera, button down to show, button up to hide.



Click on this icon to show/hide the POS data (**for 9-split-window or larger video window**) for (1) the selected DVR, or (2) the DVR for the focus camera, button down to show, button up to hide.



Click on this icon to backup video/audio, and the Backup dialog will be shown. Please select the DVR, cameras, event type, destination directory, execution time, and data range, and then click on "Apply" or "OK" to backup, or "Cancel" to cancel. Please note that Execution of "Now" or "Once" is one-time backup, while "Daily" is daily backup.



Click on this icon for snapshot of the focus camera.



Click on these icons to switch to the selected DVR, button down for selected. The 1/4/9/16 split-window video display, the camera status, and the alarm input/output will all switch to correspond to the selected DVR.



Playback panel for playback buttons, including Fast Backward, Fast Forward, Single Step, Play, Pause, Stop, and Copy (from left to right). **Please note that the Copy function can be used to archive both live and playback streams.** Please check/uncheck the cameras to be archived when the Copy Dialog is shown, and then click on OK or Apply button. If the user click on Apply button and select & highlight one of the cameras, the current copying status for that camera will be shown in the dialog.



PTZ control panel. If the camera in the focus window is a PTZ camera, these buttons in the PTZ control panel can be used for PTZ control. The operations include Tilt Up/Down, Pan Left/Right, Zoom In/Out, Focus Near, Focus Far, Iris – (darker), Iris + (brighter).

Camera  

Status indicators for cameras 1-16 (GREEN for normal, RED for motion) for the selected DVR. Click on any of these icons to select the corresponding camera of the selected DVR to be displayed in the focus window.

Alarm In  

Status indicators for alarm inputs 1-4 (GREEN for normal, RED for alarm) for the selected DVR.

Alarm Out  

Alarm outputs 1-2 (GREEN for normal state, RED for triggered state) for the selected DVR. For Administrator, click on any of these icons to control the corresponding alarm output from normal to triggered, or from triggered back to normal.



Click on this icon to call up Search-by-time dialog. Please select the time (Year, Month, Date, Hour, and Minute) and recorded video/audio type (Alarm, Motion, Video Loss, and Normal) to search for playback. Click on Search button to start the search of the recorded video/audio. (If it failed, the result will be shown on the title of the dialog.) Now, you may use the playback buttons to play the recorded video/audio. **Please note that there must be some cameras in playback mode for the search to succeed.**



Click on this icon to call up Search-by-event dialog. The event logs will be shown on the screen. Please select the DVR device, event type, and source ID to search for the event logs. Click on Refresh, Up, or Down to update the event logs. Click on the desired event log to highlight and select it. Click on the OK button to search the recorded video/audio for the highlighted event log. Now, you may use the playback buttons to play the recorded video/audio.



Click on this icon to call up search-PC-video dialog. Please select the file, and then click on Open. Now, you may use the playback buttons to play the recorded video/audio in the file.



Click on this icon to call up POS-Search dialog. Please select the DVR, camera, key word, and start/end time, and click on "Search", then the matched POS data will be shown. Please select the desired POS data, and click on "Backup" or "Play" to backup or play the recorded video/audio corresponding to the POS data.



Click on this icon to show/hide full PTZ control panel. The user can click on the PTZ Panel (but outside of any object in it) (to call up the **Context menu**) to move it.



Click on this icon to call up Setup dialog. **Up to 4 DVRs can be added to the device list.** Following is a brief description for each item:

- **Device Name** – any meaningful name for the (DVR) device.
- **Address** – IP address or URL domain name for the (DVR) device. It should be the same as the IP address (for Static IP) or URL (for PPPoE) in Network Setup for the (DVR) device.
- **Control Port** – the control port for the (DVR) device. The default value is 67.
- **Data Port** – the data port for the (DVR) device. The default value is 68.
- **User Name** – the login user name for the (DVR) device. It must be in the list in

Password Setup for the (DVR) device. Please note that **different levels of users have different available operations.**

- **Password** – the corresponding password for the login user name for the (DVR) device.
- **Auto Connection** – whether the user wants to connect automatically to this (DVR) device.
- **Connected** – whether this PC is connected with the (DVR) device now.

The other properties in the dialog are similar to those described in [Chapter 6](#). Please refer to [Chapter 6](#) for the detailed descriptions. Besides, the user can **download/upload** the configurations from/to the connected DVR, or **open/save** the configurations from/to the designated directory.



Click on this icon to call up remote Software Upgrade dialog. Please select the DVR device and upgrade file in the PC, and then click on Start button to start the software upgrade process. The Upgrade status will be updated according to the progress. When the upgrade file is uploading, the user may click on Stop/Close button to stop the upgrade process.

Note : There must be at least one formatted HDD in the DVR for the remote upgrade to succeed. After the software in the DVR is upgraded, the DVR will restart immediately and the PC will be disconnected from the DVR. Please do step 7 in Before Logging On, and then re-run the I.E. to connect to the DVR again.



Click on this icon to call up GPS Configuration dialog. Please select the DVR device. Then select **Display attributes** and **Output attributes** for **Live & Playback** respectively. If **Data Exchange File** is enabled, the corresponding GPS data will be output to the file specified. Please note that **Tag** and **Icon** are to be used by GPS software such as Google Earth for display purpose. If **COM Port** is enabled, the corresponding GPS data will be output through the specified COM port of the PC. The output data can be used as input by GPS application software such as Google Earth. Please refer to [Appendix G](#) for using Google Earth in more details.



Click on this icon to call up POS Configuration dialog. Please select the DVR device. Then select **Video Window or Pop-up Window** to show the POS data. All the other attributes are similar to those for the DVR.

System Requirements of Remote PC

It is recommended to access the digital video recorder using a PC that meets the following system requirements. If you use a PC that does not meet the following system requirements, it may cause problems such as slow imaging or the browser unable to operate.

- **PC**
IBM PC/AT compatible.
- **CPU**
Intel® Pentium® 4, 1.7 GHz or above.
- **OS**
Microsoft® Windows® XP, Windows® 2000 with SP4, or Windows® Vista.
- **Monitor**
1024 x 768 or above.
- **Memory (DRAM)**
512MB, or 1024MB for Windows® Vista.
- **Network Interface**
Ethernet, 10/100 Base-T.
- **Web Browser**
Microsoft® Internet Explorer® 6.0 or above.
- **DirectX**
Microsoft® DirectX® 9.0 or above.
- **Others**
Windows XP KB319740 Package if Windows XP SP2 is installed.

9.2 PDA/Mobile Phone Remote Access

The digital video recorder can also be remotely accessed by using a web browser installed on a PDA or mobile phone that (1) supports **xHTML** and **MJPEG file format**, and (2) has screen resolution at **240x320** or above.

Please enter the domain name or IP address of the digital video recorder in the Location/Address field of the web browser, and the remote login display will be shown. (For most of the mobile devices, the DVR will automatically redirect to the correct web page, EX. <http://192.168.1.89/wap.htm> for IP address <http://192.168.1.89>. If not, please enter the full address with /wap.htm.) Please enter the correct login name and password for the digital video recorder to login the system, and the screen will be shown as below.



Following is a brief description for each item and its specific operations:



: 1-Window display for the selected channel (camera).



: Quad display.



: Status indicators for alarm inputs 1-4 (unchecked for normal, checked for alarm).



: Alarm outputs 1-2 (unchecked for normal, checked for triggered). Administrator can check to trigger the alarm output, uncheck for back to normal.



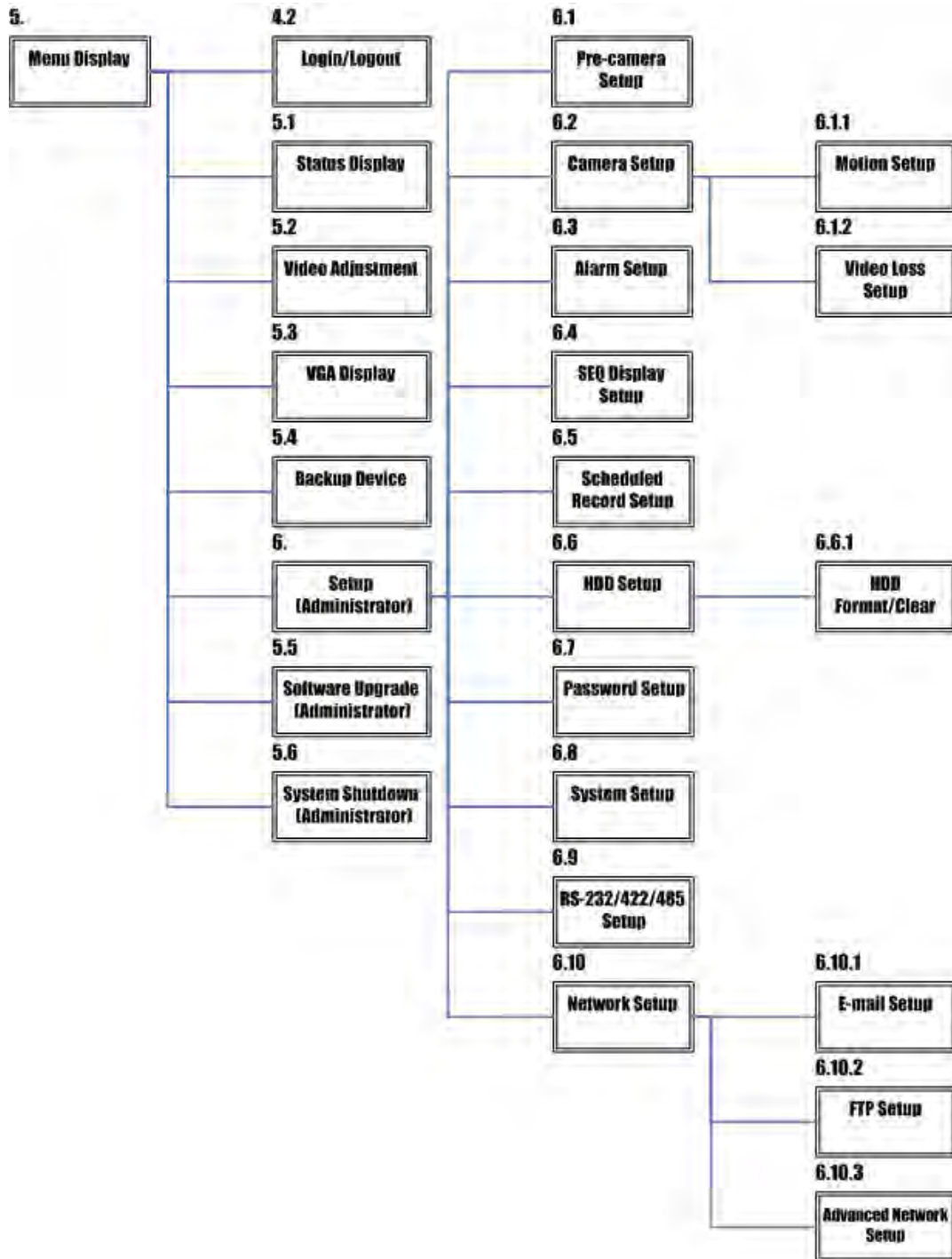
: Click on this button to submit the content to the digital video recorder. The new settings will take effect, and the screen will refresh.

Appendix A – Specifications

System	O.S.	Embedded Linux 2.6
	Multiplex	Sixfold operation - simultaneous record, live, playback, backup, control, & remote access
	Certification	FCC, CE, LVDS, etc.
Video	Format	NTSC/EIA or PAL/CCIR
	Input	4-CH, BNC, 1Vp-p/75ohm
	Main monitor	BNC x 1, S-video x 1, 1Vp-p/75ohm Optional VGA D-SUB 15-pin connector
	Call monitor	BNC x 1, 1Vp-p/75ohm
	Loss detection	Yes
	Motion detection	Yes, with configurable detection area & sensitivity
Audio	Input	2 RCA-jack connectors, line-in level (100mV-2Vrms)
	Output	2 RCA-jack connectors, line-out level (up to 2Vrms)
Record	Compression	Video: MPEG-4 Audio: ADPCM
	Frame rate (IPS) & Resolution	NTSC – 30 / 720*480, 60 / 720*240, 120 / 360*240 PAL – 25 / 720*576, 50 / 720*288, 100 / 360*288
	Mode	Manual/Schedule/Alarm/Motion
	Pre-record time	0 - 10 seconds
	Post-record time	0 - 60 minutes
Display	Resolution	NTSC – 720*480, PAL – 720*576
	Split windows	1/4
	Frame rate	Up to 30 (NTSC) / 25 (PAL) IPS per display window
	Freeze	Yes
	Sequential switch	User adjustable
	Digital Zoom	X2, X4
Playback	Frame rate (IPS) & Resolution	NTSC – 30 / 720*480, 60 / 720*240, 120 / 360*240 PAL – 25 / 720*576, 50 / 720*288, 100 / 360*288
	Search	Smart search , Date/time, Camera, Alarm, Motion, & Video Loss
	Operation	Play, Fast Forward, Backward, Pause, Stop, etc. Remote I.E. and HEM can also Print
Storage	HDD	ISD-204 - 1 set of 3.5" IDE type HDD, Max. 500GB of HDD storage size
	Partitions	Configurable alarm partition size Configurable auto-overwrite or not
	Backup	1 USB 2.0 ports for USB 2.0 disk drives, card readers, HDD, etc.
Alarm	Input	4 contact or TTL/CMOS signal, polarity selectable
	Output	1 Normally Open, 1 Normally Closed relay output
	Buzzer	Yes
	Triggered by	Sensor input, Video loss, & Motion
	Event log	Yes
Network	Ethernet	1 RJ-45 10/100BaseT Ethernet connector

	Web	Remote setup, monitoring, backup, alarm notification, & remote software upgrade 1 I.E. for up to 4 DVRs
	E-mail	Alarm notification to stationary or mobile devices
	FTP	Alarm video/audio file storage
	Video	1/4 split-window & SEQ mode for I.E. and HEM Dynamic electronics maps for HEM
	Audio	Bidirectional
	Protocol	TCP/IP, HTTP, PPPoE, DHCP, DDNS, FTP, TSP
	Remote users	Up to 6 users simultaneously
	Bandwidth	TCP/IP type dynamic sliding window control
	Remote stations	PC, mobile phone, or PDA
Control / GPS / POS	I/R	1 I/R remote controller
	RS-232	1 D-type female connector for PTZ, GPS, or POS 1 optional D-type female connector for PTZ or GPS
	RS-485	2-pin for keyboard or PTZ control
Setup	Local	On screen setup via keypad, I/R remote controller, and/or RS-485 keyboard controller
	Remote	Setup & upload via Windows application software
	Multi-lingual	Yes
Reliability	System recovery	Auto power on after power loss recovery
	Watch Dog Timer	Yes
	Timer	Built-in real time clock
	Security	Multi-level password (3 levels, up to 18 accounts) protection with authentication key for remote access
Weights & Measures	Dimension	320(W) x 235(D) x 45(H)mm
	Weight	3 KG (without HDD)
Power	Source	AC model - 90~264 VAC, 47~63 Hz
	Consumption	18W Max.
Operating Temperature		0°C ~ +50°C

Appendix B – Structures Of Menu Displays



Appendix C – Time Zone Table

Time Zone	Offset	DST	Start	End
Samoa	GMT – 11:00			
Hawaii	GMT – 10:00			
Alaska	GMT – 09:00	✓	Mar, 2nd Sun, 2:00	Nov, 1st Sun, 2:00
Pacific Time (US & Canada)	GMT – 08:00	✓	Mar, 2nd Sun, 2:00	Nov, 1st Sun, 2:00
Arizona, US Mountain	GMT – 07:00			
Chihuahua, La Paz, Mazatlan	GMT – 07:00	✓	May, 1st Sun, 2:00	Sep, last Sun, 2:00
Mountain Time (US & Canada)	GMT – 07:00	✓	Mar, 2nd Sun, 2:00	Nov, 1st Sun, 2:00
Central America, Saskatchewan	GMT – 06:00			
Central Time (US & Canada)	GMT – 06:00	✓	Mar, 2nd Sun, 2:00	Nov, 1st Sun, 2:00
Guadalajara, Mexico City, Monterrey	GMT – 06:00	✓	May, 1st Sun, 2:00	Sep, last Sun, 2:00
Bogota, Lima, Quito, Indiana (East)	GMT – 05:00			
Eastern Time (US & Canada)	GMT – 05:00	✓	Mar, 2nd Sun, 2:00	Nov, 1st Sun, 2:00
Atlantic Time (Canada)	GMT – 04:00	✓	Mar, 2nd Sun, 2:00	Nov, 1st Sun, 2:00
Caracas, La Paz	GMT – 04:00			
Santiago	GMT – 04:00	✓	Oct, 2nd Sun, 0:00	Mar, 2nd Sun, 0:00
Newfoundland	GMT – 03:30	✓	Apr, 1st Sun, 2:00	Oct, last Sun, 2:00
Brasilia	GMT – 03:00	✓	Oct, 3rd Sun, 2:00	Feb, 3rd Sun, 2:00
Buenos Aires, Georgetown	GMT – 03:00	✓	Oct, 3rd Sun, 2:00	Feb, 2nd Sun, 2:00
Greenland	GMT – 03:00	✓	Mar, last Sun, 1:00	Oct, last Sun, 1:00
Mid-Atlantic	GMT – 02:00	✓	Mar, last Sun, 2:00	Sep, last Sun, 2:00
Azores	GMT – 01:00	✓	Mar, last Sun, 2:00	Oct, last Sun, 3:00
Cape Verde	GMT – 01:00			
Casablanca, Monrovia	GMT + 00:00			
Dublin, London	GMT + 00:00	✓	Mar, last Sun, 1:00	Oct, last Sun, 2:00
Western Europe, Central Europe	GMT + 01:00	✓	Mar, last Sun, 2:00	Oct, last Sun, 3:00
West Central Africa	GMT + 01:00			
Eastern Europe	GMT + 02:00	✓	Mar, last Sun, 0:00	Oct, last Sun, 1:00
Cairo	GMT + 02:00	✓	Apr, last Fri, 2:00	Sep, last Fri, 2:00
Harare, Pretoria	GMT + 02:00			
Helsinki, Kyiv, Riga, Sofia, Tallinn	GMT + 02:00	✓	Mar, last Sun, 2:00	Oct, last Sun, 3:00
Jerusalem	GMT + 02:00	✓	Apr 1, 2:00	Oct, 2nd Sun, 2:00
Baghdad	GMT + 03:00	✓	Apr 1, 3:00	Oct 1, 4:00
Kuwait, Riyadh, Nairobi	GMT + 03:00			
Moscow, St. Petersburg, Volgograd	GMT + 03:00	✓	Mar, last Sun, 2:00	Oct, last Sun, 3:00
Tehran	GMT + 03:30	✓	Mar, 4th Tue, 2:00	Sep, 4th Thu, 2:00
Abu Dhabi, Muscat	GMT + 04:00			
Baku, Tbilisi, Yerevan	GMT + 04:00	✓	Mar, last Sun, 2:00	Oct, last Sun, 3:00
Time Zone	Offset	DST	Start	End
Kabul	GMT + 04:30			
Ekaterinburg	GMT + 05:00	✓	Mar, last Sun, 2:00	Oct, last Sun, 3:00

Islamabad, Karachi, Tashkent	GMT + 05:00			
Chennai, Mumbai, New Delhi	GMT + 05:30			
Kathmandu	GMT + 05:45			
Almaty, Novosibirsk	GMT + 06:00	∨	Mar, last Sun, 2:00	Oct, last Sun, 3:00
Astana, Dhaka, Sri Lanka	GMT + 06:00			
Rangoon	GMT + 06:30			
Bangkok, Hanoi, Jakarta	GMT + 07:00			
Krasnoyarsk	GMT + 07:00	∨	Mar, last Sun, 2:00	Oct, last Sun, 3:00
Irkutsk, Ulaan Bataar	GMT + 08:00	∨	Mar, last Sun, 2:00	Oct, last Sun, 3:00
Beijing, Chingqing, H. K., Urumqi	GMT + 08:00			
Kuala Lumpur, Perth, Singapore	GMT + 08:00			
Taipei	GMT + 08:00			
Osaka, Seoul, Tokyo	GMT + 09:00			
Yakutsk	GMT + 09:00	∨	Mar, last Sun, 2:00	Oct, last Sun, 3:00
Adelaide	GMT + 09:30	∨	Oct, last Sun, 2:00	Mar, last Sun, 3:00
Darwin	GMT + 09:30			
Brisbane, Guam, Port Moresby	GMT + 10:00			
Canberra, Melbourne, Sydney	GMT + 10:00	∨	Oct, last Sun, 2:00	Mar, last Sun, 3:00
Hobart	GMT + 10:00	∨	Oct, 1st Sun, 2:00	Mar, last Sun, 3:00
Vladivostok	GMT + 10:00	∨	Mar, last Sun, 2:00	Oct, last Sun, 3:00
Magadan, Solomon Is.	GMT + 11:00			
Auckland, Wellington	GMT + 12:00	∨	Oct, 1st Sun, 2:00	Mar, 3rd Sun, 2:00
Fiji	GMT + 12:00			
Kamchatka	GMT + 12:00	∨	Mar, last Sun, 2:00	Oct, last Sun, 3:00
Anadyr	GMT + 13:00	∨	Mar, last Sun, 2:00	Oct, last Sun, 3:00
Nuku'alofa	GMT + 13:00			

Appendix D – Keyboard Control Protocol

Data Format	5 Bytes – Byte 1 : Synchronization Byte (0xFF) Byte 2 : Address, i.e. Device ID (0 – 0xFF) Byte 3 : Code (see below) Byte 4 : Reserved (0x00) Byte 5 : Checksum (sum of Bytes 2 – 4)
Code	Value (MSB set for key press, MSB reset for release)
0 – 9	0x30 – 0x39 (ASCII characters ‘0’ – ‘9’)
*/mark	0x2d (ASCII character ‘-’ – Minus sign)
#/code	0x3d (ASCII character ‘=’ – Equal sign)
Alarm Reset	0x71 (ASCII character ‘q’)
MODE	0x77 (ASCII character ‘w’)
SEQ	0x65 (ASCII character ‘e’)
CALL	0x72 (ASCII character ‘r’)
SEARCH	0x74 (ASCII character ‘t’)
REC	0x79 (ASCII character ‘y’)
Fast Backward	0x61 (ASCII character ‘a’)
Fast Forward	0x73 (ASCII character ‘s’)
Single Step	0x64 (ASCII character ‘d’)
Play/Pause	0x66 (ASCII character ‘f’)
Stop	0x67 (ASCII character ‘g’)
Copy	0x68 (ASCII character ‘h’)
MENU	0x75 (ASCII character ‘u’)
ESC/PTZ	0x6f (ASCII character ‘o’)
MUTE/NEXT	0x6e (ASCII character ‘n’)
X2/GOTO	0x2c (ASCII character ‘,’ – Comma)
▲/BS	0x69 (ASCII character ‘i’)
▼/DEL	0x6d (ASCII character ‘m’)
◀	0x6a (ASCII character ‘j’)
▶	0x6c (ASCII character ‘l’ – small L)
ENTER	0x6b (ASCII character ‘k’)
Vol –	0x7a (ASCII character ‘z’)
Vol +	0x78 (ASCII character ‘x’)
–	0x63 (ASCII character ‘c’)
+	0x76 (ASCII character ‘v’)
MAIN-AUX ON	0x62 (ASCII character ‘b’)
MAIN-AUX OFF	0x70 (ASCII character ‘p’)

CALL-AUX ON	0x5b (ASCII character '[')
CALL-AUX OFF	0x5d (ASCII character ']')
UP-LEFT	0x7b (ASCII character '{')
DOWN-LEFT	0x7c (ASCII character ' ')
UP-RIGHT	0x7d (ASCII character '}')
DOWN-RIGHT	0x7e (ASCII character '~')

Appendix E – Recording Table

NTSC Recording Time (in Hour) - For Reference Only										
System Storage (GB): 200										
Resolution	Quality	Average	Recording Rate (IPS)							
		Picture Size (KB)*			120	60	30	15	10	5
720x480	9	32.2					58	115	173	345
(Full D1)	8	26.0					71	142	214	427
	7	22.0					84	168	253	505
	6	17.4					106	213	319	639
	5	15.4					120	241	361	722
	4	12.2					152	304	455	911
	3	8.8					210	421	631	1263
	2	6.6					281	561	842	1684
	1	4.0					463	926	1389	2778
720x240	9	16.1				58	115	230	345	690
(Half D1)	8	13.0				71	142	285	427	855
	7	11.0				84	168	337	505	1010
	6	8.7				106	213	426	639	1277
	5	7.7				120	241	481	722	1443
	4	6.1				152	304	607	911	1821
	3	4.4				210	421	842	1263	2525
	2	3.3				281	561	1122	1684	3367
	1	2.0				463	926	1852	2778	5556
360x240	9	8.0			58	116	231	463	694	1389
(CIF)	8	6.5			71	142	285	570	855	1709
	7	5.5			84	168	337	673	1010	2020
	6	4.4			105	213	421	842	1263	2525
	5	3.9			119	237	475	950	1425	2849
	4	3.0			154	309	617	1235	1852	3704
	3	2.2			210	421	842	1684	2525	5051
	2	1.7			272	545	1089	2179	3268	6536
	1	1.0			463	926	1852	3704	5556	11111

* Average Picture Size is estimated based on typical camera scene, and averaged by MPEG-4 I/P/P frames.

PAL Recording Time (in Hour) - For Reference Only										
System Storage (GB): 200										
Resolution	Quality	Average	Recording Rate (IPS)							
		Picture Size (KB)*			100	50	25	12.5	8	4
720x576	9	42.0					53	106	165	331
(Full D1)	8	34.0					65	131	204	408
	7	28.6					78	155	243	486
	6	22.6					98	197	307	615
	5	20.0					111	222	347	694
	4	16.0					139	278	434	868
	3	11.4					195	390	609	1218
	2	8.6					258	517	807	1615
	1	5.4					412	823	1286	2572
720x288	9	21.0				53	106	212	331	661
(Half D1)	8	17.0				65	131	261	408	817
	7	14.3				78	155	311	486	971
	6	11.3				98	197	393	615	1229
	5	10.0				111	222	444	694	1389
	4	8.0				139	278	556	868	1736
	3	5.7				195	390	780	1218	2437
	2	4.3				258	517	1034	1615	3230
	1	2.7				412	823	1646	2572	5144
360x288	9	10.5			53	106	212	423	661	1323
(CIF)	8	8.5			65	131	261	523	817	1634
	7	7.2			77	154	309	617	965	1929
	6	5.7			97	195	390	780	1218	2437
	5	5.0			111	222	444	889	1389	2778
	4	4.0			139	278	556	1111	1736	3472
	3	2.8			198	397	794	1587	2480	4960
	2	2.2			253	505	1010	2020	3157	6313
	1	1.4			397	794	1587	3175	4960	9921

* Average Picture Size is estimated based on typical camera scene, and averaged by MPEG-4 I/P/P frames.

Appendix F – MS-Windows HEM Utilities

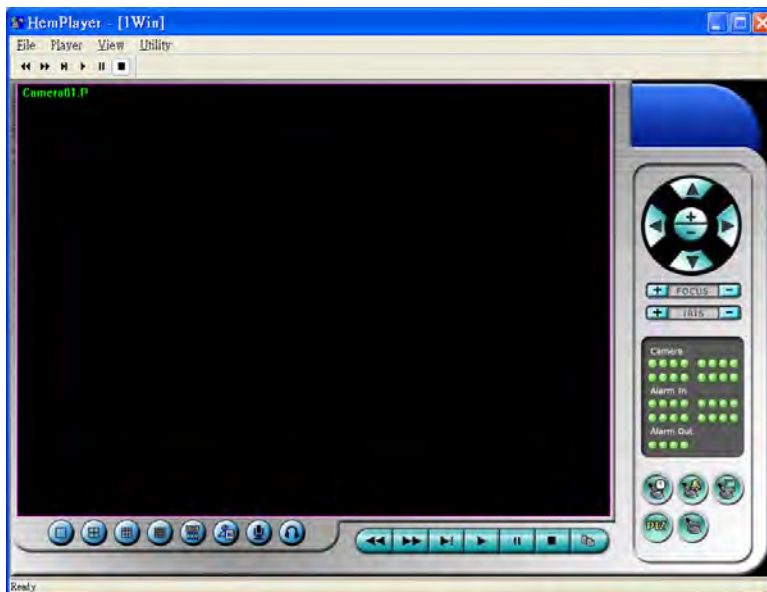
There are several MS-Windows utility programs in the bundled CD, including **HEM-20410**, **HEM Player**, **Keyboard Control Simulator**, and **M4V to AVI Conversion Utility**. Please insert the CD in the CD-ROM or DVD-ROM drive in your PC, and then double click on **HEM-20410/Setup.exe** in the CD to install ISD-204, and **Utilities/Setup.exe** to install the utility programs. Please follow the instructions on the screen to install the software in the default directory “Program Files\Hyper Electronics Mappers” or the directory entered by the user. For ISD-204, please refer to the manual for HEM. For the other utility programs, please refer to the following paragraphs.

HEM Player

Before running **HEM Player** in your PC, please make sure the followings:

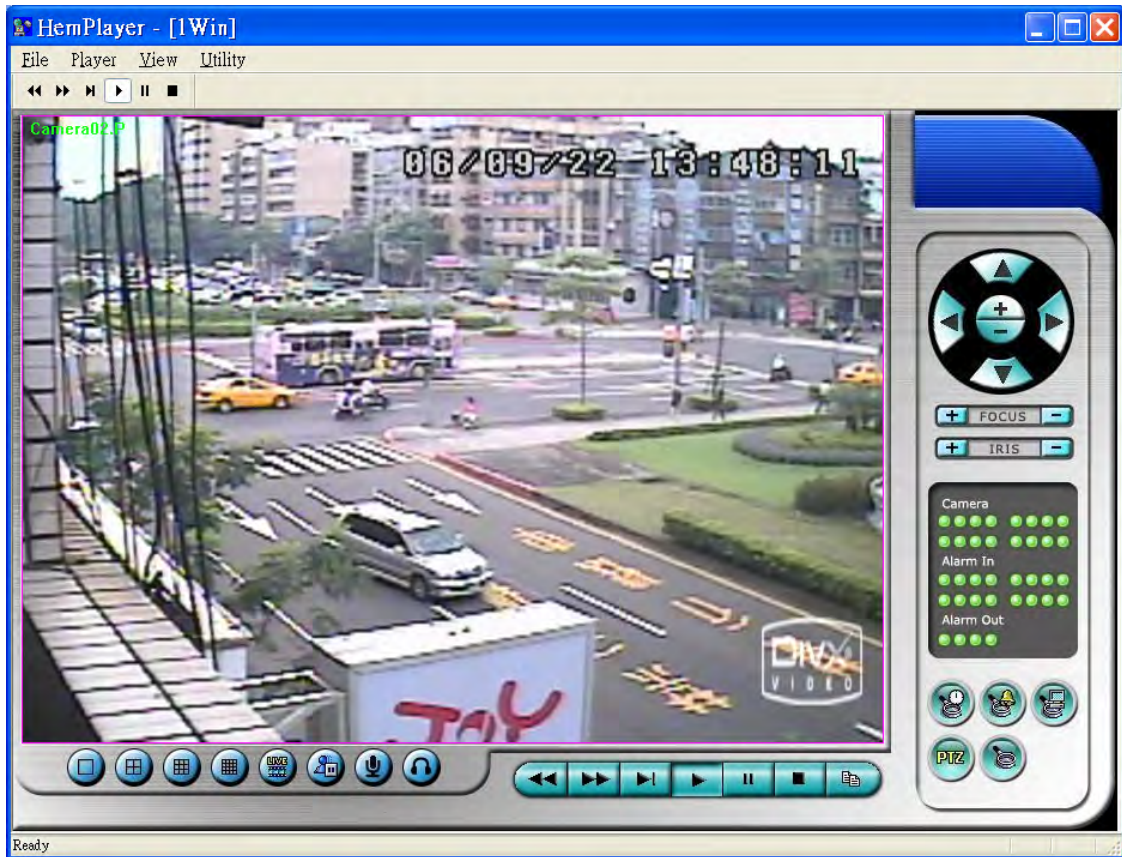
1. **DirectX® End-User Runtime 9.0** or above has been installed in your PC successfully. If not, please logon to <http://www.microsoft.com> to get the free download of it.
2. Please go to Start->Setup->Control, select Display->Settings, and set the Screen Resolution to at least 1024x768 and Color to 32-bit.

To run the **HEM Player** under MicroSoft® Windows® XP or Windows® 2000, please select Start->Programs->Hyper Electronics Mappers->HemPlayer, and the screen will be shown as below.



Since this utility is a free player utility for the archived files, from USB backup or remote backup, some of the functions are disabled. The mouse cursor will change to “Hand” type if it’s on those enabled function icons. The operations and their descriptions are the same as in [Chapter 9. Remote Access](#).

To select an archived file for playback, please click on **File** menu, and then select **Open**. After an archived file is opened, the user may click on the player buttons to play the file. The following diagram shows the screen after the **Play** button is pressed.



The user may print the whole player screen (including the current video image) or the current video image by selecting **File** menu, and then select **Print** or **Print Video** respectively.

Keyboard Control Simulator

To run the **Keyboard Control Simulator** under MS-Windows, please select Start->Programs->Hyper Electronics Mappers->KCtrlSimulator, and the screen will be shown as below.

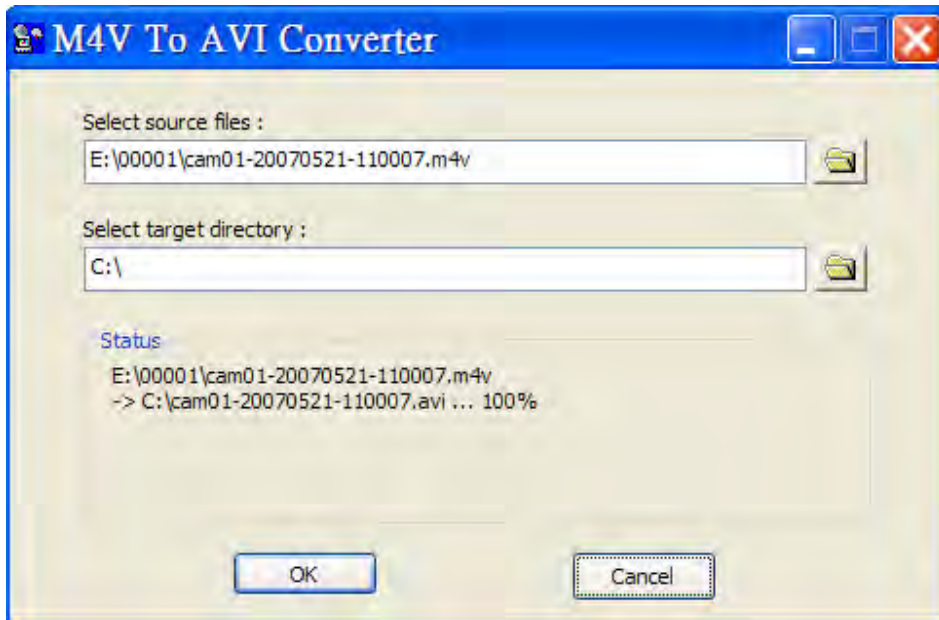


Please note that most of the buttons correspond to the keypads on the front panel. If you connect the PC through RS-232 and use an RS-232/RS-485 converter to connect to multiple DVRs, you would be able to control multiple DVRs via the simulation software. Please refer to [Section 3.2 Optional Connections](#) to connect/cascade the DVRs to the PC.

To select the DVR to control, please click on the button as circled in the above diagram to set the corresponding DVR ID. Please note that the [RS-232/422/485 setup \(Section 6.9\)](#), including the **DVR ID**, in the DVRs must be configured correctly (**Model** must be set as **Control Protocol**).

M4V to AVI Conversion Utility

To run the **M4V to AVI Conversion Utility** under MS-Windows, please select Start->Programs->Hyper Electronics Mappers->M4V2AVI or double-click on the file **M4V2AVI.EXE**, and the screen will be shown as below.




Please select the source files – **.M4V** files archived from DVR, remote I.E., HEM, and FTP file transfer – to be converted from, and select the target directory to save the converted files, and then click on **OK** to do the conversion. The converted **.AVI** files can be played by **Windows Media Player** if **DivX** or the other MPEG-4 decoder is installed in the PC. If not, please logon to <http://www.divx.com> to get the free download of DivX.

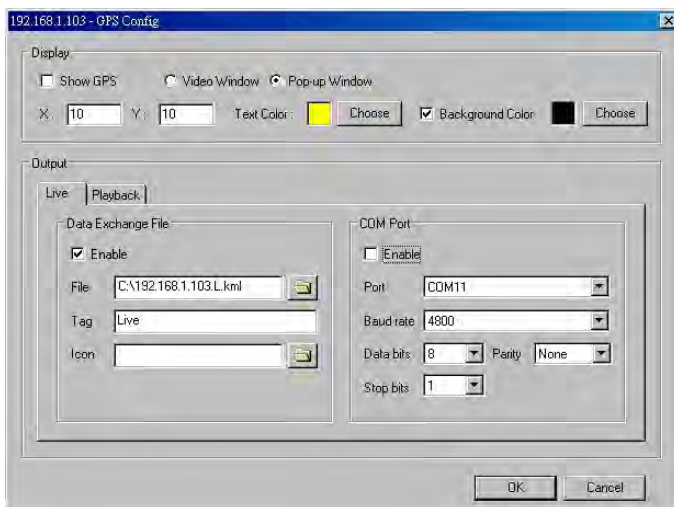
Appendix G – GPS Function in Remote Software with Google Earth

The GPS output for the DVR and its remote software can be used by GPS software such as Google Earth. The user may use the following paragraphs as an example.

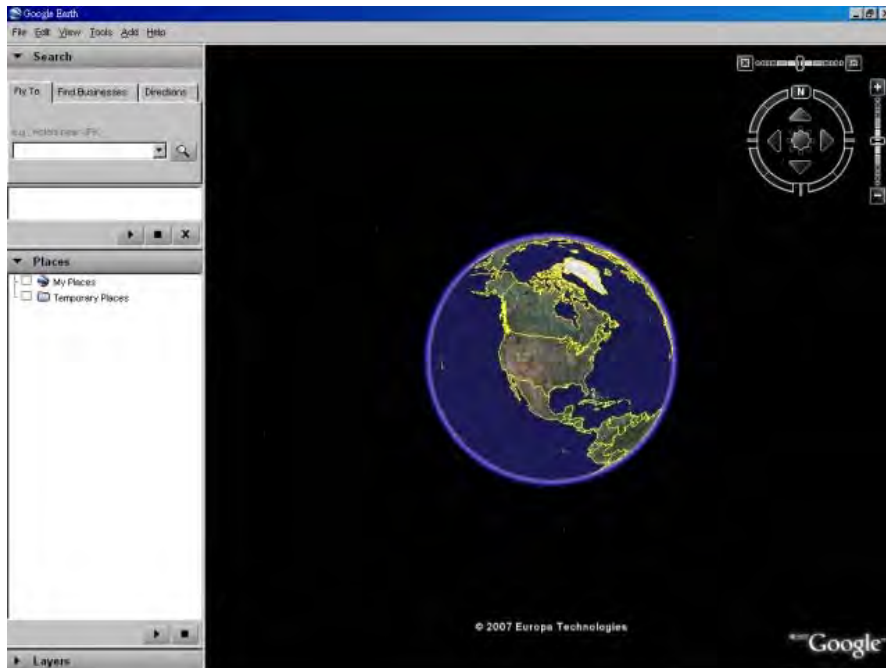
1. Open remote software such as IE Browser, and log on to the DVR or open and playback the archived file with GPS information.



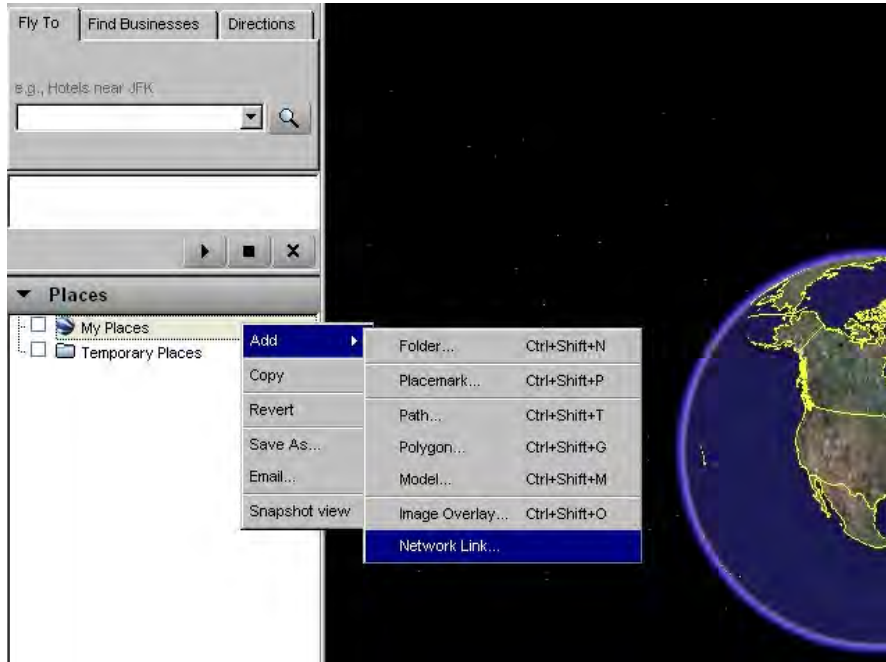
2. Select GPS Configuration ().
3. Enable Output with Data Exchange File, and set the related items (File, Tag, & Icon).



4. Open Google Earth.



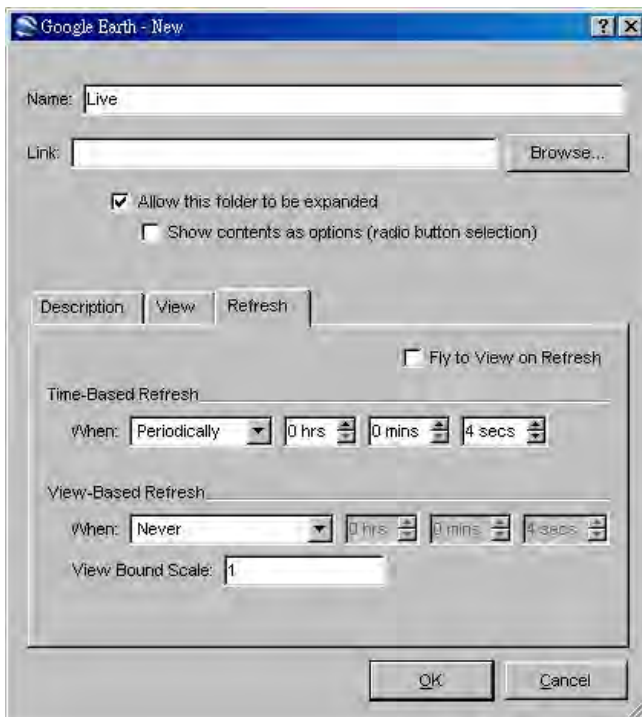
5. Add Network Link.



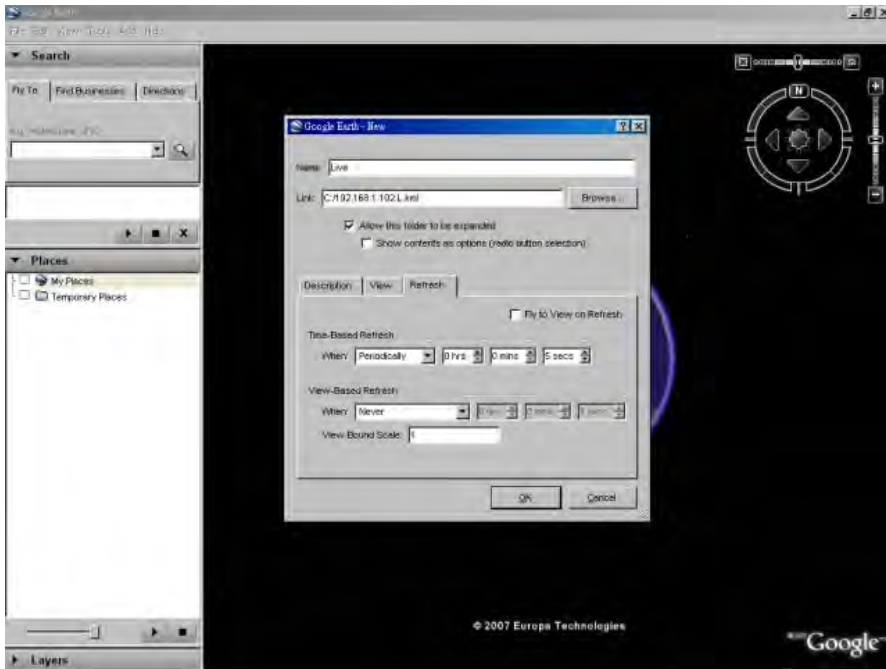
6. Select the Data Exchange File in the remote software as Link. **Please note that the directory & filename MUST be in English for old version of Google Earth to work correctly.**



7. Set Time-Based Refresh.



8. Click on OK button to save the settings.



9. Now, the GPS data will be fed from the DVR remote software to Google Earth, and the GPS position will be continuously updated in Google Earth.

