

If you need to carry out any (re-)building work near the smoke alarm, you are advised to temporarily cover the smoke alarm to avoid any dust getting into the unit. Note: The smoke alarm is not active when covered. Do not paint the smoke alarm, or cover it permanently.

The supplier cannot be held responsible for loss and/or damages of any nature, which includes accidents and/or consequential damages, resulting from the fact of the signal not being emitted from the smoke alarm in case of smoke or fire. If the smoke alarm does not work correctly, we advise you to contact the supplier.

Guarantee (excl. battery)

Under normal circumstances, the battery will last one year. The manufacturer guarantees this product is free of any material and/or production mistakes for a period of 3 years from the original date of purchase by the consumer. Excluded are any damage events caused as a result of accident or inexpert handling. If the product proves to be defective within the indicated period, it will be replaced free of charge. Do not repair the product yourself, as this may void the guarantee. Please contact Customer Service if the smoke detector is not operating properly.

Details

- 85 dB Audio alarm signal
- 9 V DC block battery (IEC 6F22) included
- Use only the following batteries, other batteries may damage the smoke alarm.
EVEREADY 1222, ENERGIZER 522, DURACELL MN1604, MX1604, GP1604S,
ULTRALIFE U9VL-J
- For domestic use only
- Not suitable for use in moist or damp conditions (kitchen, bathroom, shower, etc.)
- For use between -10 to +60 degrees Celsius
- Easy to install (fastening materials included)
- Produced in China

Customer Service

Customer service: www.chick-a-dee.eu/service.

*Design by Louise van der Veld
Manufactured by The Initiator and Company*

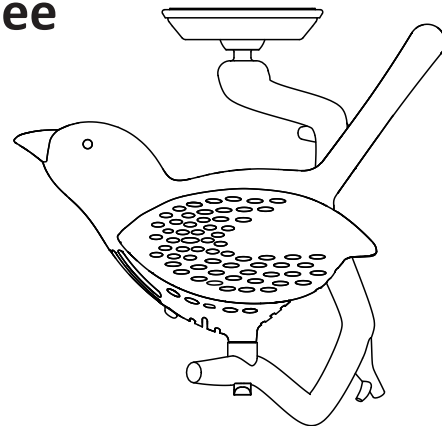


Chick-a-Dee

Smoke Alarm

Type CHI02

Smoke alarm devices



0560

10

0560 - CPD - 09219003/AA/00

EN 14604:2005

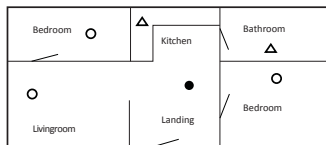
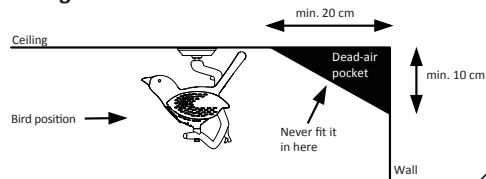
100601 CHI.02 manual

Thank you for purchasing the Chick-a-Dee smoke alarm.

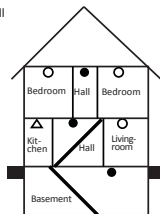
The Chick-a-Dee smoke alarm works in accordance with the photocell principle. This means that the alarm detects smoke caused by a fire and then emits an alarm signal. This alarm does not detect heat, gas or fire. This alarm is intended for domestic use only. The Chick-a-Dee smoke alarm cannot prevent fire. Read these user-instructions thoroughly before fitting the smoke alarm. Keep this manual in a secure place for future reference.

Warning: keep this smoke alarm out of reach of children

Fitting the smoke alarm



- Smoke alarm for minimum protection
- Smoke alarm for optimum protection
- △ Heat alarm



Early detection of fire goes most effective when smoke alarms are placed in all rooms and spaces in the house

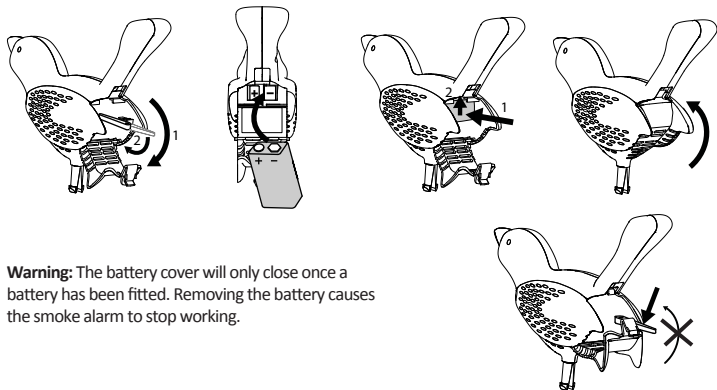
Fitting the battery

1. Open cover (1)
2. Fold the mechanism (2)

Before fitting
Check: + is left
- is right

- 3a. Fit the battery (1)
- 3b. Push upwards (2) until the battery clicks in place

4. Close cover



Warning: The battery cover will only close once a battery has been fitted. Removing the battery causes the smoke alarm to stop working.

Fitting the smoke alarm

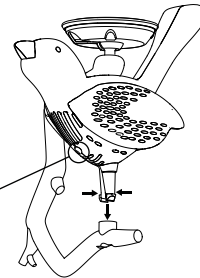
Screw mounting plate into ceiling



Mount



Affix bird



Use

There is a test button on the smoke alarm to simulate smoke detection. Press it in until the alarm signal sounds. Test the smoke alarm once a week and always after replacing a battery, a period of absence or having cleaned the smoke alarm. The smoke alarm must be regularly vacuumed to remove any dust particles and to ensure optimum working condition.

Replacing the battery

The smoke alarm works with a 9V DC block battery. The battery usually works on average for one year, under normal circumstances. If the battery is (almost) empty, the smoke alarm alerts you to this with an audible "beep" and a flashing LED lamp. This happens at intervals of between 30 and 40 seconds for a minimum of 7 days. Replace the battery when this signal is given.

Discarding

Handle the battery as chemical waste. Do not throw away the smoke alarm with normal house refuse, but hand it in to be recycled. Ask your municipal environment service for waste recycling stations near you.

How to proceed in case of fire

- Leave the house immediate via the escape route. Every second counts, so don't waste any time by first getting dressed and/or collecting valuables.
- Stay close to the ground in case of heavy smoke, breathe gently through a (wet) cloth.
- Once outside (or at the neighbors) telephone the fire department. Do not telephone from your own house.
- Return to your home only when the fire department gives the all clear.