
HD-CONVERTER

USER MANUAL

MODEL GBS-8220 CGA/EGA/YUV TO VGA CONVERTER

VERSION 3.0

2008-11

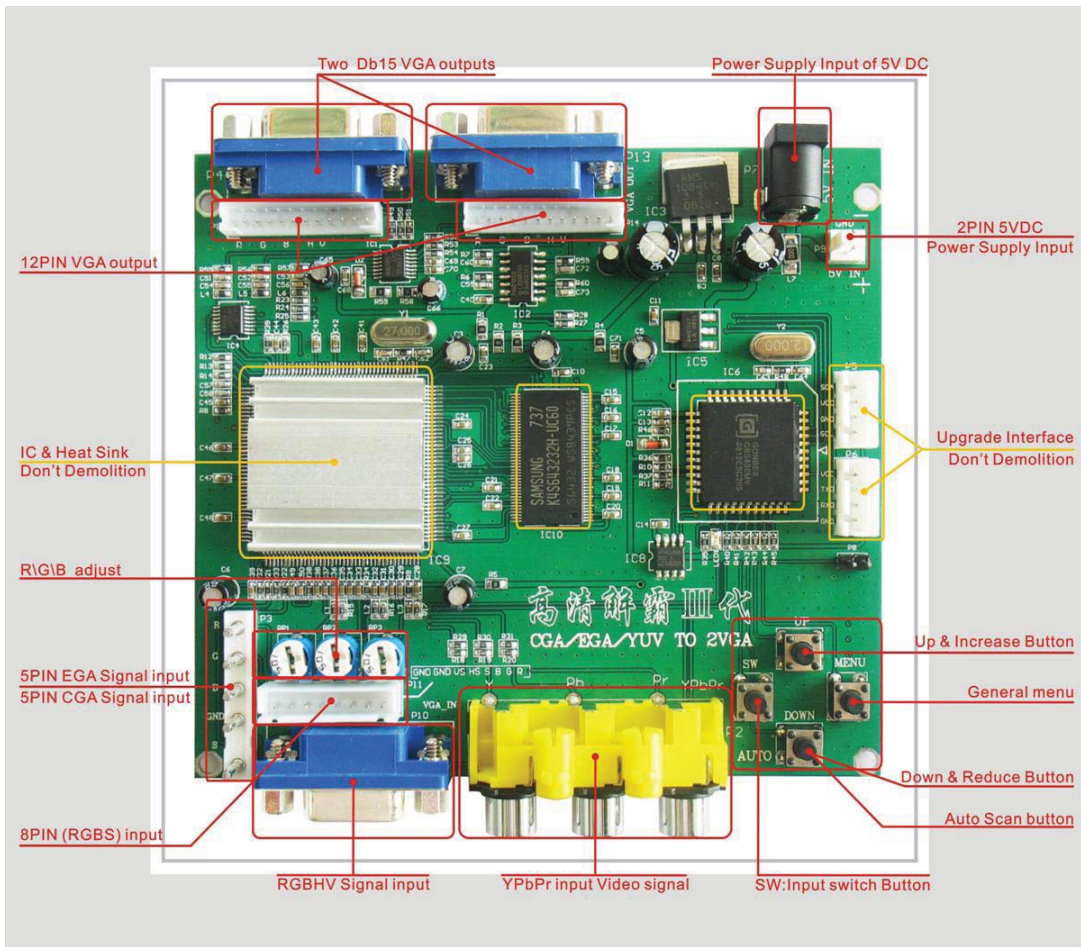
NOTE

The high definition converter GBS-8220 it's professional of game convert. Support all games (Amusement ! Playstation ! Xbox ! wii.....)convert to CRT monitor ! LCD monitor ! PDP monitor..... Auto scan CGA/EGA/YUV signal, Two VGA outputs , output high resolution signal.

FEATURES

- Supports CGA/EGA/YUV signal input.
- Supports VGA output 640*480,800*600,1024*768,1360*768
- CGA/EGA signal auto scan(15K,24K,31K)
- YUV signal auto scan(480i,576i,720i,1080i,480p,576p,720p,1080p)
- Chinese and English OSD.
- Supports position control & zoom control.
- True digital 24-bit A/D converter for true 16.7-million color conversion.
- Supports all VGA monitor (CRT ! LCD ! PDP ! PROJECT.....)

CONNECT and KEY MAP



SPECIFICATIONS

Power	DC5V 2A +/- 0.5v		P7 or P9
Input signal	CGA/EGA	14.5-16.5K	Auto scan P3 or P11 or P10
		23.5-25.5K	
		30.5-32.5K	
	RGBHV	30.5-32.5K	Auto scan P10 or P11
	VGA	30.5-32.5K	Auto scan P10 or P11
	Ypbpr	480p,576p,720p,1080p	Auto scan P2
Ycber	480i,576i,720i,1080i	Auto scan P2	
Output signal	VGA	640*480,800*600 1024*768,1360*768	P4 and P13
User control	Input Switch, Image Zoom, Image Position, Output Resolution ,R\G\B gain adjust.		Menu Key R\G\B VR
Dimensions	115*105*20mm		

MENU CONTROL

- “MENU” open OSD menu, and enter.
- “UP” up and increase.
- “DOWN/AUTO” down and reduce.
 - Press this key auto scan CGA/EGA signal
 - Press this key over 5 second and release reset system
 - ** (this operation is invalid when you open OSD menu)
- “SW” switch input signal Ypbpr/RGBS/RGBHV.
 - ** (this operation is invalid when you open OSD menu)
- “Clamp sp” & “Clamp” please don’t adjust this button , excepting the monitor have black item, or picture discoloration.
- More functions control please look to OSD to operation.

FAQ

No signal on you monitor

- please check input and output cable, make sure all cable it’s connected. And make sure power it’s on. Display on you monitor it’s “No signal” please press “SW” to switch input signal.

Input not supports

- when you monitor display “input not supports” maybe you need change to low resolution .
- Please press “DOWN/AUTO” over 5 second and release. system reset to 800*600 output.

Image not full on you screen

- please enter menu adjust image position and zoom.

Image shake or freeze

- please press “DOWN/AUTO”, system auto scan input signal and restore image.

Have black item on screen, or all screen it’s too black, or picture discoloration.

- please adjust “Clamp sp” and “Clamp st”, please keep “Clamp st” less than “Clamp sp”.
- advice “Clamp st” SET “03” , “Clamp sp” SET “04”.

Image color not right

- please adjust R\G\B VR.

Menu comes up in Chinese

- Setting the board to display in English language:

1. Press MENU button on the board
2. Press DOWN button to NO.4
3. Press MENU button to enter into
4. Press UP or DOWN button to select ENGLISH
5. Press MENU button to confirm
6. The menu will now display in English