

OR*3*243

CPRS GUI V27

IRM/CAC Training

OVERVIEW

- CPRS GUI v27 Project Information
- CPRS Software and Documentation
- 508 Accessibility
- Pre-Installation Considerations
- CPRS Installation
- Post Installation Considerations
- CPRS Parameters
- New Options
- OR file changes
- HL7 changes
- Additional Information

CPRS GUI V27 PROJECT INFORMATION

CPRS GUI v27

- Project Manager: Al Ebert
- Project started: March 2006
- Started Testing: April 5, 2007
- National Release date: August 20, 2008

Ten Test Sites:

Charleston
Cleveland
Heartland-East
Hudson Valley Health Care
Loma Linda

Northern California Health Care
Palo Alto
Philadelphia
San Diego
Tampa

High Level Information

- 1003 RPC assigned to OR CPRS GUI CHART option
- Delphi Source Code size approx. 35 MB
- Executable size approx. 5.29 MB
- Approx. 435 M routines
- Approx. 296 parameters
- 16 DDs for CPRS
- 22 DDs for Order Checks

High Level Information

- OR*3.0*243 (CPRS 27) contains:
 - 206 M routines changes
 - 5 new options
 - 19 new or modified parameters
 - 68 new or modified routines

High Level Information

Interfaces with twenty-eight VistA applications

*modified in conjunction with CPRS GUI v27

- *Adverse Reaction Tracking
- Authorization/Subscription
- Automated Info Collection Sys
- *Bar Code Med Admin
- *Clinical Reminders
- *Consult/Request Tracking
- Dietetics
- *Discharge Summary
- *Health Summary
- *Herbal/OTC/Non-VA Meds
- *Inpatient Medications
- *IV Medications
- *Lab Service
- Lexicon Utility

- *Mental Health
- *Order Checks
- *Outpatient Pharmacy
- Patient Care Encounter
- *Pharmacy Data Management
- *Problem List
- *Radiology/Nuclear Medicine
- Registration
- Scheduling
- Surgery
- *Text Integration Utilities
- *VBECS
- Vitals
- *Women's Health

CPRS v27 SOFTWARE

Two Host Files

- OR_PSI_PSO_27.KID

OR*3*243

PSI*5*134

PSO*7*225

- CPRS_BUNDLE_GUI_27_REQ_REL.KID

GMRA*4*38

GMPL*2*35

GMTS*2.7*80

LR*5.2*365

TIU*1*219

WV*1*23

CPRS v27 SOFTWARE

Patches NOT included in OR*3*243 Bundles

Patch	Supported Functionality
GMTS*2.7*84	Adds Reason for Study to OE/RR Radiology Report and Health Summary
OR*3*281	Identifies Radiology/Imaging Quick Orders that may need editing
OR*3*299	Identifies and Repairs Truncated Patient Instructions in the ORDERS file (100)
PSS*1*94	Changes to input template PSSJ SCHEDULE EDIT
PSS*1*123	Supports Millimole Functionality

CPRS v27 SOFTWARE

ZIP FILE--OR_30_243.ZIP

File	Version	Contents
BorIndmm.dll	10.0.2288.42451	New Borland DLL
CPRSChart.exe	1.0.27.77	CPRS GUI v27
OR_30_243_SRC.ZIP	1.0.27.77	CPRSChart Source
Documentation	See Documentation Slides	
CPRS27_JAWS_SUPPORT_FILES.ZIP	See 508 Accessibility Framework Slides	

CPRS v27 DOCUMENTATION

Documentation files included in **OR_30_243.ZIP** |

File	Content
CPRSGUIUM.doc and .pdf	CPRS GUI User Manual
CPRSGUITM.doc and .pdf	CPRS GUI Technical Manual
CPRSLMTM.doc and .pdf	CPRS ListManager Technical Manual
OR_30_243IG.doc and .pdf	CPRS GUI v.27 and Associated Patches Installation Guide
OR_30_243RN.doc and .pdf	CPRS GUI V27 Release Notes
CPRS.HLP	CPRS Help File
CPRS.CNT	CPRS Help Contents File

508 Accessibility Files

508 Accessibility files included in CPRS27_JAWS_SUPPORT_FILES.ZIP → OR_30_243.ZIP

File	Content
JAWS.SR (v1.10)	DLL used for communication between JAWS and CPRS
JAWSUpdate.exe	Used to update JAWS 7.1 to Work with the component
VA508APP.jcf	JAWS configuration file
VA508APP.jss	JAWS script file
VA508JAWS.jss (v1137)	JAWS script file
VA508JAWSDispatcher.exe	Application used for communication between JAWS and other applications using the JAWS.SR DLL

508 Accessibility Files

508 Accessibility files included in CPRS27_JAWS_SUPPORT_FILES.ZIP →
OR_30_243.ZIP (cont)

File	Content
VA508APP.jkm	JAWS keyboard mapping file
VA508JAWS.jsd	Documentation companion file to the VA5089JAWS.jss script file
vcredist_x86.exe	Vcredist_x86.exe is the Microsoft Visual C++ 2005 Redistributable. It's called by JAWSUpdate.exe

508 Accessibility

- CPRS GUI v27 focused on making Consults, Clinical Reminders, Encounters, templates, and Orders 508 compliant. Other functionality in CPRS still needs similar work done. The Cover Sheet, Problems, Labs, Allergies, Discharge Summary, Notes, Surgery, Reports. Each of these areas may have had some 508 work completed, but would not be considered 508 compliant.

508 Accessibility Framework

- Beginning with CPRS v.27 (OR*3.0*243), a new Accessibility Framework was created in CPRS. This includes a new Delphi component, scripts, and other files that enable JAWS and CPRS to work better together.
- The new component can be used by other developers creating Delphi graphical user interface (GUI) applications. The Office of Information Health Data & Informatics (HDI) has custody of this component. To find out more about the component, please contact
<http://vawww.vista.med.va.gov/508WorkGroup/Delphi/home.asp>

508 Accessibility Framework

- Component allows Delphi applications to directly communicate with JAWS 7.1 or higher.
- 508 Accessibility Framework has the potential to work with other Assistive Technology screen reading products
- Each Assistive Technology vendor would need to update their product to interface with the 508 Accessibility Framework.

508 Accessibility Framework

Why was the Accessibility Framework developed with JAWS?

- The majority of CPRS users use JAWS
- JAWS is issued to the majority of visually impaired Veterans
- HealtheVet environment uses JAVA. Window-eyes - GW Micro does not currently support JAVA

Pre-CPRS Installation Considerations

Installation Warnings

■ CPRS and “Reason for Study”

GUI v27 implements new functionality to collect/transmit a “Reason for Study” on Imaging/Radiology orders. Prior to CPRS GUI v27, only the “Clinical History” was collected. Sites that have implemented a PACS system should evaluate their configuration to accommodate both a “Reason for Study” and “Clinical History.”

- With the release of RA*5.0*75, REASON FOR STUDY is now required. REASON FOR STUDY is being passed in OBR 31.2.
- CLINICAL HISTORY FOR EXAM is now optional. It is being passed in OBX 5,1

Pre-CPRS Installation Considerations

Installation Warnings

■ CPRS and CMOP Transmissions:

Avoid installing CPRS GUI v27 software during the CMOP Transmission Process. Identify the scheduled times for the CMOP Transmission by accessing the following options:

- Setup Auto-transmission [PSXR AUTO TRANSMIT]
- Setup CS Auto-transmission [PSXR AUTO TRANSMIT CS]

Note: These options allow the user to change the times of the 2 transmissions. Do not change the transmission times without first communicating with the CMOP.

Pre-CPRS Installation Considerations

Installation Warnings

- CPRS and CMOP Transmissions:

Check to see if a CMOP transmission is currently in progress using FileMan.

Select OPTION: INQUIRE TO FILE ENTRIES

OUTPUT FROM WHAT FILE: CMOP SYSTEM//

Select CMOP SYSTEM: CMOP-NATIONAL ACTIVE

ANOTHER ONE:

STANDARD CAPTIONED OUTPUT? Yes// N (No)

FIRST PRINT FIELD: XMIT STATUS

THEN PRINT FIELD:

Heading (S/C): CMOP SYSTEM LIST//

DEVICE: VIRTUAL TELNET Right Margin: 80//

CMOP SYSTEM LIST

AUG 8,2008 11:26 PAGE 1

XMIT STATUS

NO CURRENT TRANSMISSION

Pre-CPRS Installation Considerations

Installation Warnings

- CPRS and Pharmacy Robot :
PSO*7*225 is a required patch that is included in OR_PSI_PSO_27.KID. It includes PSOLBL. If a site has implemented a Pharmacy Robot, it is likely that it will fail if PSOLBL has been modified locally. If a site has implemented a Pharmacy Robot, make a backup of PSOLBL before install CPRS GUI v27 software. After the install, sites will need to compare the new PSOLBL to the backup and identify the differences implemented to support their Pharmacy Robot.

Pre-CPRS Installation Considerations

Installation Warnings

- CPRS V27 and BORLNDMM.DLL:

CPRS v27 is compiled with a new version of Delphi, Delphi 2006, this necessitates installation on all workstations of a new version of the BORLNDMM.DLL that was first distributed with OR*3*252. That DLL is also included with the CPRS v27 distribution in OR*3*243.

Place it in the GOLD directory along with all other CPRS v27 files; it will be updated automatically with the automatic update to CPRS v27. Failure to update this DLL, will prevent CPRS v27 from running.

Pre-CPRS Installation Considerations

Compiling CPRS v27 Source Code

- CPRS V27 and Delphi 2006:

CPRS v27 is compiled with a new version of Delphi, Delphi 2006. Sites that modify the CPRS source code must use Delphi 2006.

XWB*1.1*47 is a Broker Developer Toolkit patch.

If CPRS GUI v27 is modified locally, XWB*1.1*47 must be installed before the CPRS GUI v27 source code is recompiled.

- Accessibility Framework

The VA 508 Accessibility Framework is required to compile CPRS 27. You can get it and the documentation from this site:

<http://vaww.vista.med.va.gov/508WorkGroup/Delphi/home.asp>

Pre-CPRS Installation Considerations:

OR*3*281

CPRS V27 introduces a new "Reason for Study" prompt.

- Radiology and Imaging quick orders may need to be updated
- Part of the text now in "History and Reason for Exam" may need to be moved to "Reason for Study"
- "Reason for Study" has a size limit of 64 characters so the change must be made by a person who can review what, if any, portion of the text should be moved into the new field

Run the following option and review the report. This should be done IN ADVANCE of installing OR*3*243

ORCM RA SEARCH

RADIOLOGY/IMAGING QUICK ORDER

CPRS Installation

■ CPRS v27 Patch Installation Sequence

- Make sure all Released Required patches are installed:

OR*3*232, OR*3*245, OR*3*246, OR*3*254,
OR*3*255, OR*3*256, OR*3*258, OR*3*265,
OR*3*275, OR*3*277, PSS*1*112, PSS*1*118,
YS*5.01*92, XU*8*498

CPRS Installation

■ CPRS v27 Patch Installation Sequence

- Make sure all Released Related patches are installed:

DG*5.3*703, GMRC*3*55, GMTS*2.7*85,
IB*2.*339, LR*5.2*364, OR*3*281, PSJ*5*120,
PSJ*5*180, PSO*7*292, PSS*1*108, PXRM*2*6,
RA*5*86, RA*5*92, YS*5.01*85

CPRS Installation

■ CPRS v27 Patch Installation Sequence

- Install PSS*1*94
- Install Required and Related Patches bundle:
CPRS_BUNDLE_GUI_27_REQ_REL.KID
- Install CPRS v27 bundle: OR_PSI_PSO_27.KID
- Install PSS*1*123
- Install GMTS*2.7*84
- Install OR*3*299

Post-CPRS Installation Considerations:

JAWS Configuration Files

- Configure a visually-impaired user's workstation with the new CPRS component.
 1. Extract CPRS27_JAWS_SUPPORT_FILES.ZIP file into C:\Program Files\Vista\Common Files directory.
 2. If workstation is running JAWS 8.0.2173 or higher nothing further required
 - 2a. If workstation is running JAWS 8.0, or JAWS 7.1.500, execute the JAWSUpdate.exe located in C:\Program Files\Vista\Common Files directory.
 3. If the workstation is running a version of JAWS that is older than v 7.1.500, the new accessibility features in CPRS will not function.

Refer to Appendix A of the User Manual for additional information such as keyboard short cuts.

Post-CPRS Installation Considerations:

IV Quick Order Review

Review the Quick Orders message generated when you installed OR*3*243 or generate a new message by running the following option.

MR Medication Quick Order Report [OR MEDICATION QO CHECKER]

```
IN Basket, 12 messages (1-12), 9 new
*=New/!=Priority.....Subject.....From.....
 11. MED QUICK ORDERS W/ ANCESTORS: Jun 05, 2008@09:2 POSTMASTER
 12. MED QUICK ORDERS W/O ANCESTORS: Jun 05, 2008@09: POSTMASTER

IN Basket Message: 11//
```

Post-CPRS Installation Considerations:

IV Quick Order Review (cont)

CPRS 27 has added three new fields (Route, IV Type, and Schedule) to the IV Order Dialog. For all IV orders the Route and IV Type must be defined. For Intermittent IV Type orders the schedule field must be defined. CPRS will not process the orders unless these fields are defined. Preexisting IV Quick orders will have to be updated with these new required fields. To aid this process a report is generated.

IEN	Name	Display Name	Legend
=====	=====	=====	=====
15805	AGP IV PROMPT	AGP IV PROMPT	A
15799	AGP IV QUICK ORDER	AGP IV QUICK ORDER	A

Post-CPRS Installation Considerations

Mental Health DLL and CPRS 27

If site has implemented the new Mental Health Assistant (PXRM*2*6 and YS*5.01*85 implemented) and OR USE MH DLL parameter is set to YES, make sure the following has been done:

1. YS_MHA.dll and MHA3_DLL_Scoring.dll must be placed in the Common Files folder (same place as Vitals dll)
2. YS Broker1 must be assigned as a secondary menu option for users that:
 1. Process MH tests in the new MHA3 executable
 2. Have access to reminder dialogs in CPRS
3. Rebuild your Menus

CPRS Parameters

New CPRS Parameters (Ten)
CPRS/VBECS Parameters (Five)
Updated CPRS Parameters (Three)
Removed CPRS Parameter (One)

New CPRS Parameter

Reason for Study

- **OR RA RFS CARRY ON (OR RA RFS CARRY ON)**
- System level parameter
- This parameter determines if CPRS will carry on the text entered in the Reason for Study field of the Radiology (Imaging) order dialog to subsequent orders in the same ordering session.
- By carry on means that when one order is entered the value entered in the Reason for Study field will be held and used again in subsequent Radiology orders.
- Access via:
 - CPRS Configuration (IRM)→ xx General Parameter Tools→ EP Edit Parameter Values

Reason for Study

Select PARAMETER DEFINITION NAME: OR RA RFS CARRY ON OR RA RFS CARRY ON

-----Setting OR RA RFS CARRY ON for System: CPRS27.FO-SLC.MED.VA.GOV
Value: NO// YES

The screenshot shows a software window titled "Order an Imaging Procedure". The window is divided into several sections:

- Imaging Type:** A dropdown menu showing "GENERAL RADIOLOGY".
- Imaging Procedure:** A list box showing "CHEST 2 VIEWS PA&LAT" selected.
- Available Modifiers:** A list box showing "PORTABLE EXAM", "BILATERAL EXAM", "CART PORTABLE", "OPERATING ROOM", "PORTABLE EXAM", and "RIGHT".
- Selected Modifiers:** A list box showing "BILATERAL EXAM" and "PORTABLE EXAM".
- Reason for Study (REQUIRED - 64 characters maximum):** A text field containing "This is the new required Reason for Study." This field is highlighted with a red box.
- Clinical History (Optional):** A text field containing "This is now the optional Clinical History."
- Date Desired:** A date picker showing "Nov 22, 2007".
- Urgency:** A dropdown menu showing "ROUTINE".
- Transport:** A dropdown menu showing "PORTABLE".
- Category:** A dropdown menu showing "INPATIENT".
- Submit To:** A dropdown menu showing "RAD ROOM".
- Exams Over the Last 7 Days:** A section with a list box and a "Remove" button.
- Isolation:** A checkbox labeled "Isolation".
- Pregnant:** Radio buttons for "Yes", "No", and "Unknown".
- PreOp Scheduled:** A date picker.
- Accept Order:** A button.
- Quit:** A button.

The bottom of the window shows the selected procedure and modifiers: "CHEST 2 VIEWS PA&LAT BILATERAL EXAM, PORTABLE EXAM".

New CPRS Parameter: MESSAGE FOR LC CHANGED TO WC

- **ORWLR LC CHANGED TO WC** (MESSAGE FOR LC CHANGED TO WC)
- Division, system, location, service, package level parameter
- This parameter defines the text that provides instructions regarding specimen collection for orders that have been changed from lab collect to ward collect.
- This will allow local customization of the message displayed to users when lab collect orders with continuous schedules are automatically changed to ward collect when lab collection is not available. Parameter allows 80 characters of text. The 80-character limit is necessary because this text will not wrap. The PACKAGE value exported with the parameter is the existing "Please contact the ward staff to insure the specimen is collected."
- Access via:
 - CPRS Configuration (IRM) → xx General Parameter Tools → EP Edit Parameter Values

New CPRS Parameter Administration Times

- **OR ADMIN TIME HELP TEXT** (CPRS ADMINISTRATION TIMES HELP TEXT)
- System level parameter
- This parameter defines the text message to display when the user clicks on the administration times on the complex dosage tab.
- This parameter determines the information that is displayed in the Administration Time Information pop-up or Hover Hint that is displayed to the user. The pop-up includes the administration times for the dose and the help text defined in this parameter.
- Access via:
 - CPRS Configuration (IRM) → xx General Parameter Tools → EP Edit Parameter Values

Administration Times

CPRS now displays administration times when writing inpatient medication orders in the unit dose and infusion order dialogs.

Dosage		Complex				Insert Row		Remove Row	
Dosage	Route	Schedule	Duration (optional)	Admin. Times	then/and				
250 MG	ORAL	Q6H	7 DAYS	0600-1200-1800-2400	THEN				

☐ Give additional dose now

Admin. Time: 0600-1400-2200

Exp To select a different admin time use the Day-of-Week Schedule builder.

Admin. Time: 0930-1730

Expected First Dose: TODAY (Jun 03, 08) at 17:30

To select a different admin time use the Day-of-Week Schedule builder.

* Indicates a Required Field.

Administration Time Information [X]

The Administration Times for this dose are:

0600-1200-1800-2400

To select a different admin time use the Day-of-Week Schedule builder.

OK

New CPRS Parameter DC Reason Sequence

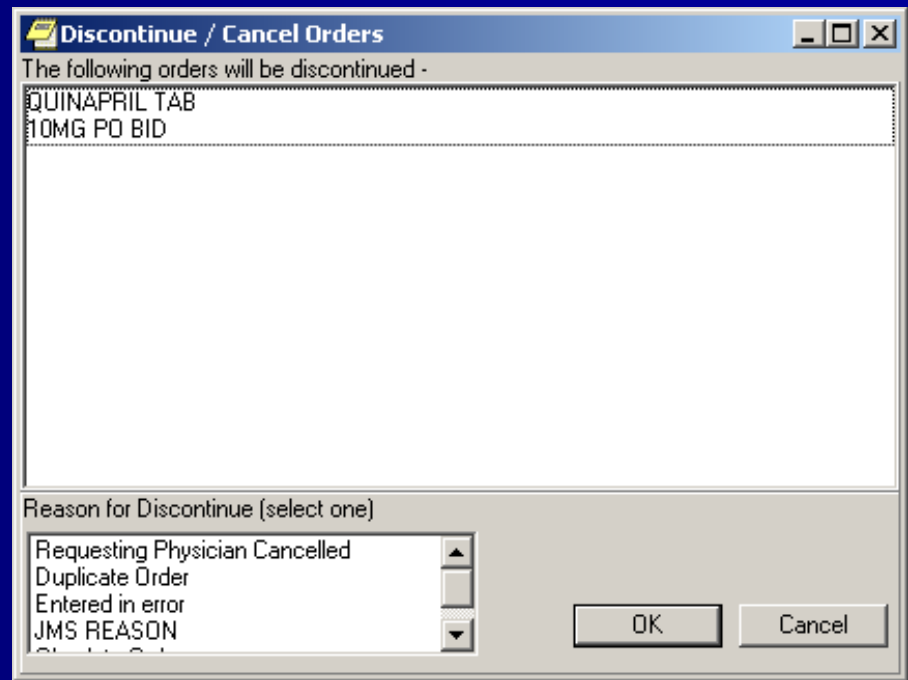
- **OR DC REASON (DC REASON SEQUENCE)**
- System level parameter
- This parameter sets the display sequence of the DC Reason list
- This parameter determines the sequence sites want the order DC reasons to appear. Sites do not need to set a sequence for every DC Reasons. For example if a site wants to set the "Requesting Physician Cancelled" DC Reasons to the top of the list. Sites will set a value of 1 for that entry and CPRS will display the rest of the DC Reasons after the "Requesting Physician Cancelled" DC reason.
- Access via:
 - CPRS Configuration (IRM) → xx General Parameter Tools → EP Edit Parameter Values

DC Reason Sequence

----- Setting OR DC REASON LIST for System: CPRS27.FO-SLC.MED.VA.GOV -----
Select Display Sequence: ?

Display Sequence Value

- | | |
|---|--------------------------------|
| 1 | Requesting Physician Cancelled |
| 2 | Duplicate Order |



New CPRS Parameter

LIST OF GENERIC FLAG REASONS

- **OR FLAGGED ORD REASONS** (LIST OF GENERIC FLAG REASONS)
- System level parameter
- This parameter allows sites to define standard generic reason's for flagging orders that the users can choose in the CPRS GUI.
- Access via:
 - CPRS Configuration (IRM)→ xx General Parameter Tools→ EP Edit Parameter Values

LIST OF GENERIC FLAG REASONS

Setting OR FLAGGED ORD REASONS for System: CPRS27.FO-SLC.MED.VA.GOV ----

Select sequence: ?

sequence Value

- | | |
|---|-----------------------------|
| 0 | Med renewal request |
| 1 | Order request |
| 2 | Order needing clarification |
| 3 | Med order needs approval |

AMPICILLIN INJ 10 GM in
ALCOHOL 5% W/DEXTROSE 5% INJ,SOLN 1000 ml IV AM

Reason for Flag (Enter or select from list)

- Med renewal request
- Order request
- Order needing clarification
- Med order needs approval test

Alert Recipient

OK Cancel

New CPRS Parameter Meds Tab Sorts

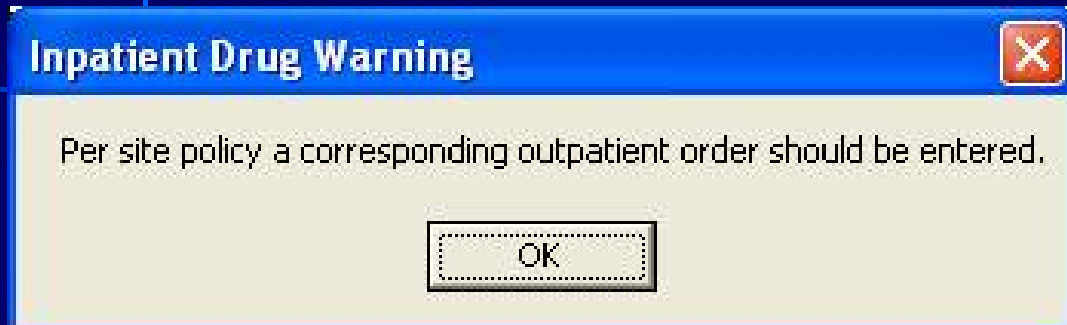
- OR MEDS TAB SORT
- Set by CPRS when the user defines a sort for the medications tab.
- Possible Values
 - 1:Status/Exp. Date
 - 2:Status Group/Status/Loc./Drug name
 - 3:Drug, status active, status recent expired

New CPRS Parameter

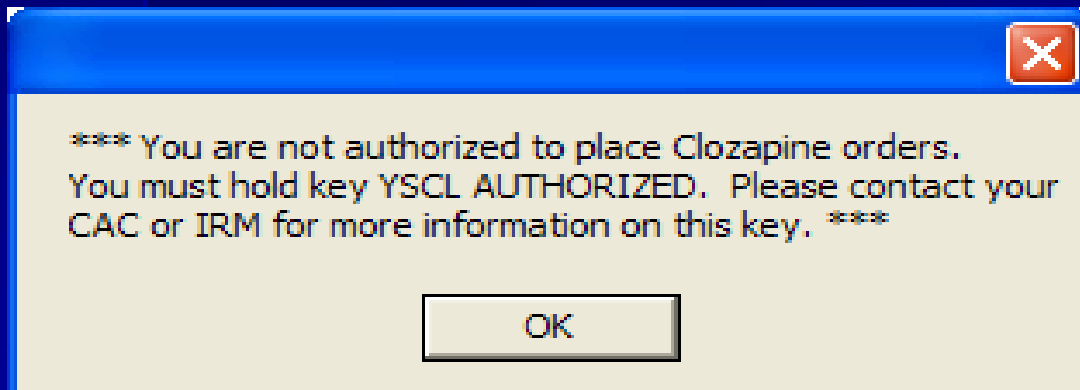
Clozapine Orders

- **OR CLOZ INPT** (MSG TO DISPLAY ON INPT ORD OF CLOZAPINE)
- System level Parameter
- This parameter defines the text that advises users about the site's policy regarding management of inpatient Clozapine orders.
- This parameter allows sites to set the text they would like for users to see when an inpatient order of Clozapine is made. This drug is generally ordered in an outpatient setting and thus is subject to the special order appropriateness checks. However, when ordered in an inpatient setting, these checks are not done. Thus sites should determine a policy to handle this and provide instructions to users based on that policy.
- Access via:
 - CPRS Configuration (Clin Coord) → GP GUI Edit Inpatient Clozapine Message
 - GUI Parameters → CLOZ

Clozapine Orders

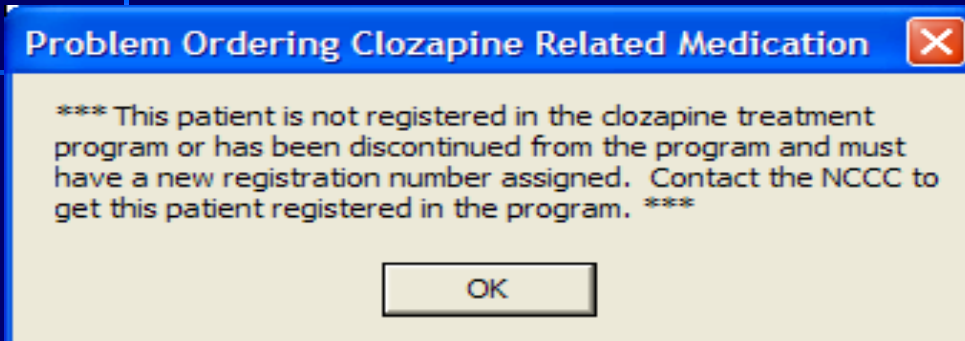


Inpatient message for Clozapine if defined in the OR CLOZ INPT parameter and the patient passes the Clozapine order checks.

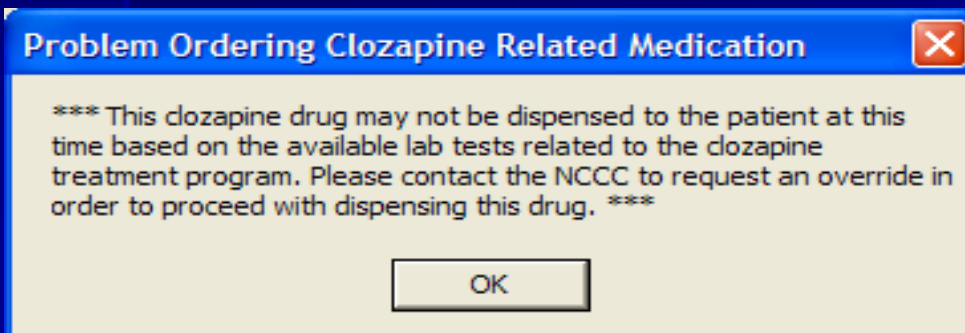


This message appears if the provider does not have the YSCL Authorized security key and/or does not have a DEA number or a VA number.

Clozapine Orders



This message appears if the patient is not registered for the Clozapine treatment program



This message appears if the patient does not have a White Blood Count or an Absolute Neutrophil Count within 7 days of placing the Clozapine order.


Clozapine Orders

Order Checking

ANC between 1.5 and 2.0 - please repeat CBC/Diff including WBC and ANC immediately and twice weekly. Most recent results - WBC 3.7 [Feb 26, 2007 4:46:06 pm] ANC 1.6 [Feb 26, 2007 4:46:06 pm]

Previous adverse reaction to: PHENOTHIAZINE/RELATED ANTIPSYCHOTICS

This order check appears after placing the clozapine order and a local override is needed to finish the order.

Problem Ordering Clozapine Related Medication 

*** This clozapine drug may not be dispensed to the patient at this time based on the available lab tests related to the clozapine treatment program. Please contact the NCCC to request an override in order to proceed with dispensing this drug. ***

Related Lab Test(s)

=====

WBC COUNT: 2.9 K/cmm
ABSOLUTE NEUTROPHIL COUNT: 2.4 K/cmm
Date/Time of last tests: 02/21/2007

This message appears if a national override is needed to order the clozapine order.

New CPRS Parameter

Accidental Signing of Old Orders

- When canceling orders that are unsigned, orders that are canceled outside of the session will no longer be deleted but actually canceled and retained.
- Old unsigned orders will now be lapsed based on the OR LAPSE ORDERS and OR LAPSE ORDERS DFLT parameter values.
- A nightly task job will flag lapsed orders.
- Option OR LAPSED ORDERS will be added under the OR PARAM COORDINATOR MENU. This is a utility to pull up reports on orders that have been lapsed due to provider's failure to sign the order before the lapse period expires.

New CPRS Parameter

Accidental Signing of Old Orders

- **OR LAPSE ORDERS** (LAPSE UNSIGNED/UNRELEASED ORDER BY GROUP)
- Division, System level parameter
- This parameter sets the number of days to keep unsigned/unreleased orders before lapsing them.
- The purpose of this parameter is to store the number of days that old orders will be lapsed. This parameter is multi valued with an instance term of DISPLAY GROUPS. Thus the way it works is that you can set "Display Group A" so that old orders from this display group will lapse in 10 days for instance. Then you could have "Display Group B" set so that those orders would lapse when they are 20 days old. Display groups not individually set by this parameter are affected by the OR LAPSE ORDERS DFLT parameter.
- By lapsing, it is meant that the order is placed in a LAPSED status
- Access via:
 - CPRS Configuration (IRM)→ xx General Parameter Tools→ EP Edit Parameter Values

New CPRS Parameter

Accidental Signing of Old Orders

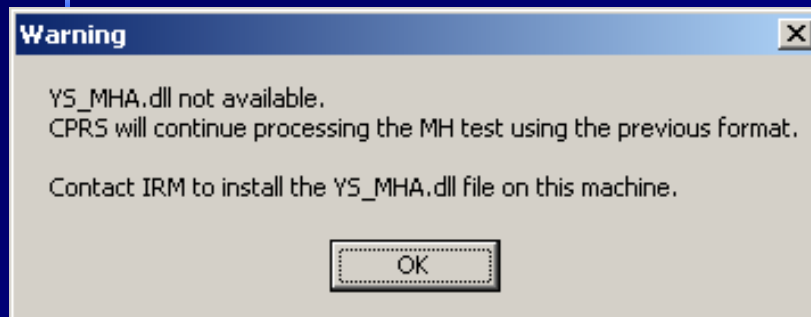
- **OR LAPSE ORDERS DFLT** (LAPSE UNSIGNED/UNRELEASED ORDER DEFAULT)
- Division, system level parameter
- This parameter sets the default for the number of days that old orders will be lapsed when those orders are from a DISPLAY GROUP that does not have parameter OR LAPSE ORDERS set
- The purpose of this parameter is to store the number of days that old orders will be lapsed when those orders are from a DISPLAY GROUP that does not have parameter OR LAPSE ORDERS set. The default value that is set in this parameter will affect all orders that do not have a specific DISPLAY GROUP value. Thus if both "Display Group A" and "Display Group B" have parameter OR LAPSE ORDERS set for them but "Display Group C" does not, then orders from "Display Group C" will get lapsed in the number of days specified in OR LAPSE ORDERS DFLT.
- Access via:
 - CPRS Configuration (IRM) → xx General Parameter Tools → EP Edit Parameter Values

New CPRS Parameter

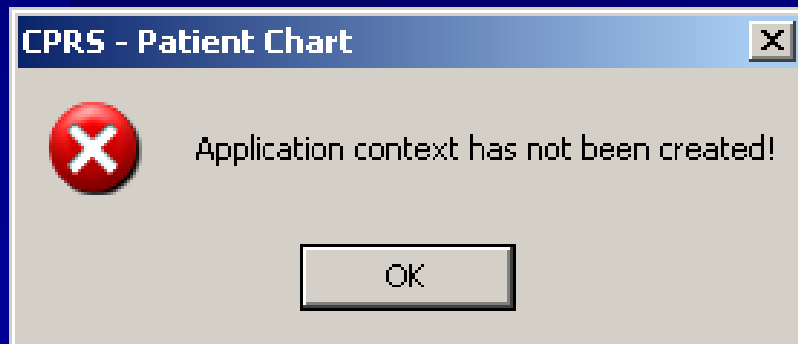
Mental Health DLL and CPRS 27

- **OR USE MH** (Use MH DLL?)
- System level parameter
- This parameter is a toggle that allows/disallows use of the Mental Health DLL in Clinical Reminder dialogs
- The purpose of this parameter is to allow sites to allow/disallow use of the Mental Health DLL when CPRS GUI v27 is installed. It is exported with a value of YES. If your site has not push the YS_MHA.DLL to all of your workstation, you should change this setting to NO.
- Access via:
 - CPRS Configuration (IRM)→ xx General Parameter Tools→ EP Edit Parameter Values

Mental Health DLL and CPRS 27



If a user get this message either set the OR USE MH DLL to no or the YS_MHA.DLL needs to be assigned to the Program Files\Vista\Common Files directory on the workstation.



If a user get this message then YS Broker1 needs to be assigned as a secondary menu option for the user.

CPRS VBECS Parameters

- **OR VBECS COMPONENT ORDER** (List of Blood Components)
- System, Division, Package, User level parameter
- This parameter allows a sequence to be assigned to Blood Components selectable from VBECS.
- Access via:
 - CPRS Configuration (IRM) → xx General
Parameter Tools → EP Edit Parameter Values

CPRS VBECS Parameters

- **OR VBECS MODIFIERS** (List of Component Modifiers)
- System, Package level parameter
- This parameter allows local configuration of the blood component modifiers.
- Access via:
 - CPRS Configuration (IRM) → xx General
Parameter Tools → EP Edit Parameter Values

CPRS VBECS Parameters

- **OR VBECS REASON FOR REQUEST** (List of Reasons for Request)
- System, Package level parameter
- This parameter allows local configuration of the Reasons for Request.
- Access via:
 - CPRS Configuration (IRM) → xx General
Parameter Tools → EP Edit Parameter Values

CPRS VBECS Parameters

Blood Component and Diagnostic Test Order Form

Patient Information

Personal ID

Blood Component Quantity*

Diagnostic Tests

Modifiers

Collection Type*

Date/Time Wanted* NOW

Urgency* Surgery

Reason for Request*

* Indicates a required field

Selected Components and Tests

Test/Component	Qty	Modifiers

Remove

Remove All

Accept Order

Quit

OR VBECS COMPONENT ORDER controls this list box.

OR VBECS MODIFIERS controls this list box.

OR VBECS REASON FOR REQUEST controls this list box.

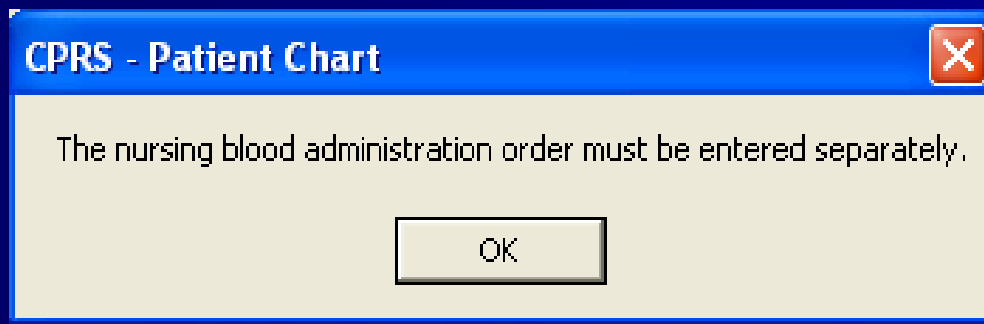
CPRS VBECS Parameters

- **OR VBECS SUPPRESS NURS ADMIN** (Suppress Nursing Admin Prompt)
- System, Division, Package level parameter
- This parameter disables the prompt/pop-up that tells the user they must enter a Nursing Administration Order manually after entering a VBECS Blood order. Disabling this feature is usually done when a Nursing Administration order has been created and added to a VBECS order set.
- Access via:
 - CPRS Configuration (IRM)→ xx General Parameter Tools→ EP Edit Parameter Values

CPRS VBECS Parameters

OR VBECS SUPPRESS NURS ADMIN

This dialog will appear when the parameter is set to "NO".



CPRS VBECS Parameters

- **ORWDXVB VBECS TNS CHECK** (Days to check for Type & Screen)
 - System, Division level parameter
 - This is used in the VBECS Order Dialog to check for recent orders for a Type & Screen order. The default is 3 days, but a site can override this number by setting this parameter to something different.
- Access via:
 - CPRS Configuration (IRM) → xx General
Parameter Tools → EP Edit Parameter Values

CPRS VBECS Parameters

Blood Component and Diagnostic Test Order Form

Patient Information | Blood Bank Orders | Lab Results Available

Blood Components Quantity*
RED BLOOD CELLS 4
Modifiers
Irradiated
Date/Time Wanted*
NOW

Diagnostic Tests*
Collection Type*
Send Patient to Lab
Collection Date/Time*
TODAY

TYPE + SCREEN must be added to order

Urgency* ROUTINE Surgery
Reason for Request* low hgb Comment
* Indicates a required field

Selected Components and Tests

Test/Component	Qty	Modifiers
RED BLOOD CELLS	4	Irradiated

Remove
Remove All

RED BLOOD CELLS Irradiated 4 unit(s)
Reason for Request: low hgb

Accept Order
Quit

ORWDXVB VBECS TNS CHECK
controls this notification.

Updated CPRS Parameter

Accidental Signing of Old Orders

- **OR UNSIGNED ORDERS ON EXIT**
- User, Service, Division, System, Package level parameter
- This parameter defines which orders the provider will see when exiting the patient record.
- This determines which unsigned orders view that holders of the ORES key will see when exiting a patient's chart; the Package default is to show My Unsigned Orders, i.e. all unsigned orders that the current user either placed or is the responsible provider for. This may also be set to list only those orders placed during the current session, or all unsigned orders for this patient regardless of provider.
- Access via:
 - CPRS Configuration (IRM) → xx General Parameter Tools → EP Edit Parameter Values

Accidental Signing of Old Orders

Accidental Signing of Old Orders in CPRS. The review/sign order form will be changed to group orders together by the current session, previous session and by all other user orders written in a previous session.

Review / Sign Changes (CPRSPATIENT,TWO - 666-00-0002)

Signature will be Applied to Checked Items

My Unsigned Orders - This Session

☒ FUROSEMIDE TAB 40 MG PO QAM *UNSIGNED*

☒ CHEST 2 VIEWS PA&LAT *UNSIGNED*

My Unsigned Orders - Previous Sessions

☒ CBC & MORPHOLOGY (WITH DIFF) BLOOD SP *UNSIGNED*

☒ DIGOXIN TAB 0.25 MG PO QAM PRN *UNSIGNED*

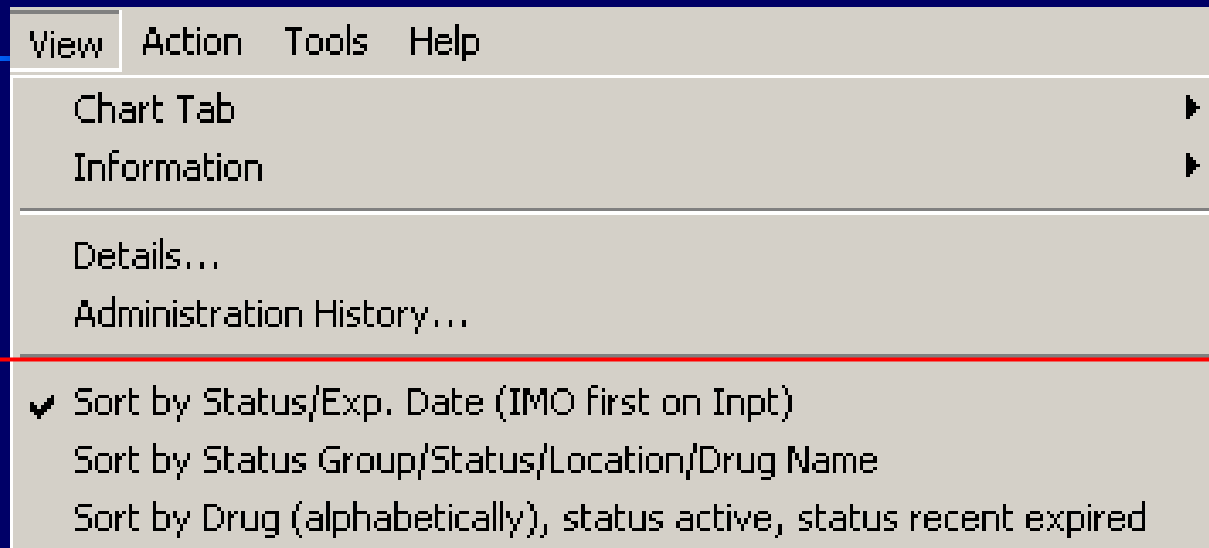
Others' Unsigned Orders - All Sessions

☒ ASPIRIN TAB 325MG TAKE TWO TABLETS BY MOUTH EVERY 8 HOURS Quantity: 180 Refills: 0 *UNSIGNED*

Updated CPRS Parameter Meds Tab Sort

- **ORCH CONTEXT MEDS (Not New)**
- User, System, Package
- This parameter is used to specify a date range (in days) for Meds tab displays that dictate the length of time orders are displayed. The parameter provides strings of delimited ("; ") pieces, the first two of which are always a relative date range.
- Users can determine the date range of medications that display on the Medications tab through the Tools|Options pull-down menu in CPRS.

Meds Tab Sorts



Sort by Status/Exp. Date (IMO first on Inpt)	
Action	Inpatient Medications
	AMPICILLIN CAP,ORAL Give: 500MG PO Q3H

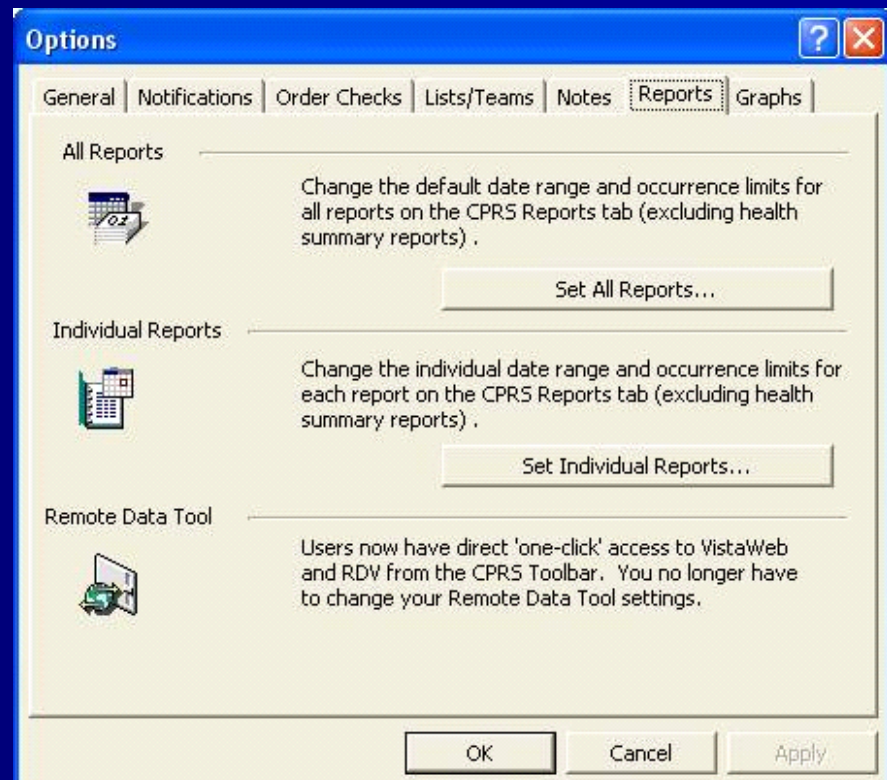
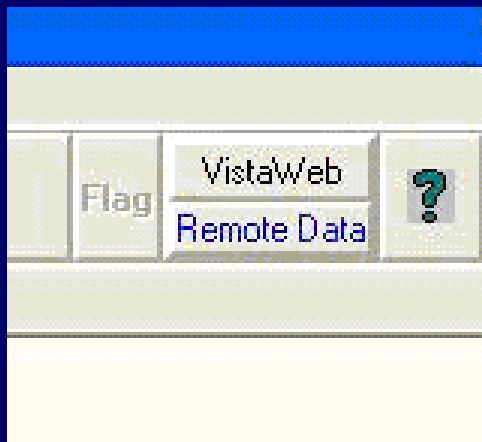
Updated CPRS Parameter ORWOR WRITE ORDERS LIST

- ORWOR WRITE ORDERS LIST
- This parameter is used to list the order dialog names that should appear in the Write Orders list box of the CPRS GUI. This is the list of dialogs that should be used in the inpatient setting.
- Since entry of an allergy was changed to be on the cover sheet, the GMRAOR ALLERGY ENTER/EDIT order dialog cannot be added to parameter ORWOR WRITE ORDERS LIST. The menus it was on work, but CPRS would not accept it on the write orders section nor on any new menus.
- Resolution: Changed the definition of parameter ORWOR WRITE ORDERS LIST to allow entries of type ACTION from file 101.41. This was already allowed on order menus.

Removed CPRS Parameter ORWRP VISTAWEB

■ ORWRP VISTAWEB

CPRS has been modified so that VistaWeb and RDV are both 1 click away, and there is no longer a need for a parameter.



OPTIONS

Five New Options:

- GUI Edit Inpatient Clozapine Message [OR INPT CLOZAPINE MESSAGE]
- Lapsed Orders Search [OR LAPSED ORDERS]
- Medication Quick Order Report [OR MEDICATION QO CHECKER]
- Order Check Override Reason Report [ORK ORD CHK OVERRIDE REPORT]
- Set List Visibility [ORLP TEAM LIST VISIBILITY]

NEW OPTION

GUI Edit Inpatient Clozapine Message

GUI Edit Inpatient Clozapine Message [OR INPT CLOZAPINE MESSAGE]

Description:

This option allows users to enter text that will be displayed to users when an inpatient Clozapine order is entered. This drug is generally ordered in an outpatient setting and thus is subject to the special order appropriateness checks. However, when ordered in an inpatient setting these checks are not done. Thus sites should determine a policy to handle this and provide instructions to users based on that policy.

Location:

- CPRS Configuration (Clin Coord) → GP GUI Parameters
→ CLOZ GUI Edit Inpatient Clozapine Message

NEW OPTION

Lapsed Orders Search

Lapsed Orders Search [OR LAPSED ORDERS]

Description:

Allows the user to search for LAPSED orders and sort them by Service/Section, Provider, Patient, or Location.

A start date entry allows the site to ignore lapsed orders that fall within their allowed grace period. For example: the site allows the clinician 48 hours to sign unsigned orders, you would enter T-2 for a start date. A stop date entry will allow the site to ignore orders older than the date entered. An example of this would be, if you wanted to ignore lapsed orders that were placed prior to CPRS and you installed CPRS on Jan 1, 1999, you would enter 010199.

Location:

CPRS Configuration (Clin Coord) → LO Lapsed Orders search

NEW OPTION

Medication Quick Order Report

Medication Quick Order Report [OR MEDICATION QO CHECKER]

Description:

CPRS 27 has added three new fields (Route, IV Type, and Schedule) to the IV Order Dialog. For all IV orders the Route and IV Type must be defined. For Intermittent IV Type orders the schedule field must be defined. CPRS will not process the orders unless these fields are defined.

Executing this option will generate a report of quick orders that should be evaluated by the site. This functionality is automatically run when CPRS GUI v27 is installed or by manually executing this option.

Location:

CPRS Configuration (Clin Coord) → MM Order Menu Management
→ MR Medication Quick Order Report

NEW OPTION

Order Check Override Reason Report

Order Check Override Reason Report [ORK ORD CHK OVERRIDE REPORT]

Description:

Provides a reporting utility that enables facilities to review critical order check override reasons. Allow for reports to be extracted, filtered, and sorted by DATE/TIME ORDERED, DIVISION, DISPLAY GROUP, ORDER CHECK, and ORDER# or any combination of these.

Location:

CPRS Configuration (Clin Coord) → OC Order Checking Mgmt Menu
→ Order Check Override Reason Report

NEW OPTION

Set List Visibility

Set List Visibility [ORLP TEAM LIST VISIBILITY]

Description:

Allows designation of team lists for use by GUI applications for:

0 = OWNER - only viewable by the owner

1 = ALLUSERS - viewable by anyone

This allows for exclusion of teams from these GUI applications and would prevent users from viewing some information that is not appropriate.

Location:

CPRS Configuration (Clin Coord) → LI Patient List Mgmt Menu
→ TE Team List Mgmt Menu → TV Set List Visibility

HL7 Message Changes

- CPRS will “escape” out the following special characters before sending the HL7 messages to Inpatient Medications or Outpatient Pharmacy: ~, &, |, / and ^.
- CPRS will “unescape” full text inclusive of escaping characters from transmissions received from Inpatient or Outpatient for ~, &, ^, / and |.
- Added Reason for Study to the HL7 message transmitted to the radiology package.
- Order Check Override Text is now transmitted to Ancillary Services (API change)
- IV Type, schedule, route and administration times values were added to the HL7 messages sent between CPRS and Inpatient Pharmacy.

Changes to Data Dictionary

- Order file (#100)
 - New fields were added
 - 39 LAPSED DATE/TIME
 - 58 SHIPBOARD HAZARD
 - 69 DC ORIGINAL ORDER
 - 98 BA SHIPBOARD HAZARD

Changes to Data Dictionary

- OE/RR LIST file (#100.21)
 - New field added
 - 11 VISIBILITY

Changes to Data Dictionary

- OE/RR REPORTS file (#101.24)
 - New fields were added
 - .48 FHIE DATA
 - .49 FHIE ONLY
 - .491 DISABLE

Additional Information

Links to CPRS GUI v27 website

- Installation Instructions
- Test Scripts
- Training Presentations
- Spreadsheet of Resolved Remedy Tickets
- Test Sites and Points of Contact
- Functional Item Spreadsheet

http://vista.med.va.gov/CPRS/html/v27_test_site_page.html#training

Questions