

HOZELOCK

7902

Heavy Duty Pressure Washer 150



WARNING: Do not use the appliance without reading this instruction sheet

HOZELOCK

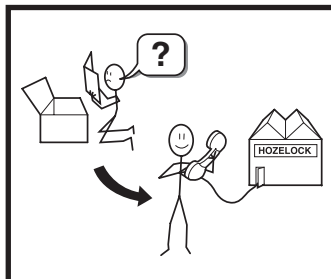
Hozelock Ltd.
Midpoint Park
Birmingham, B76 1AB. England

Tel: +44 (0) 121 313 1122

info@hazelock.com

www.hazelock.com

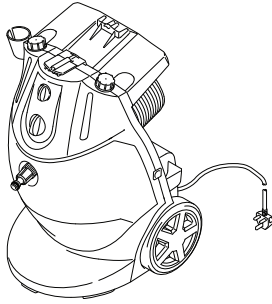
33604-005



Contents



A



D



E



B



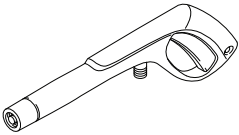
C



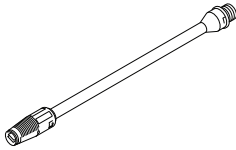
F



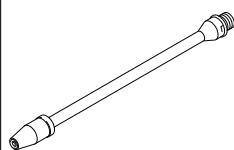
J



G



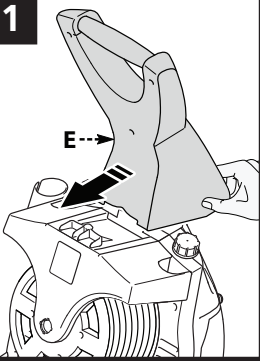
H



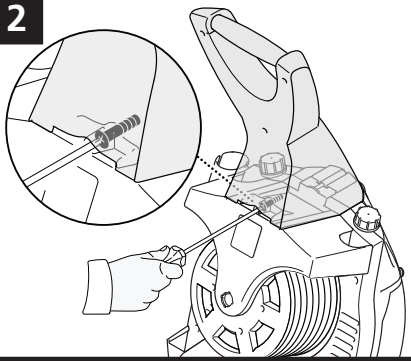
I

Assembly & Operation

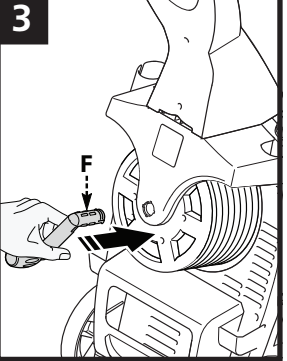
1



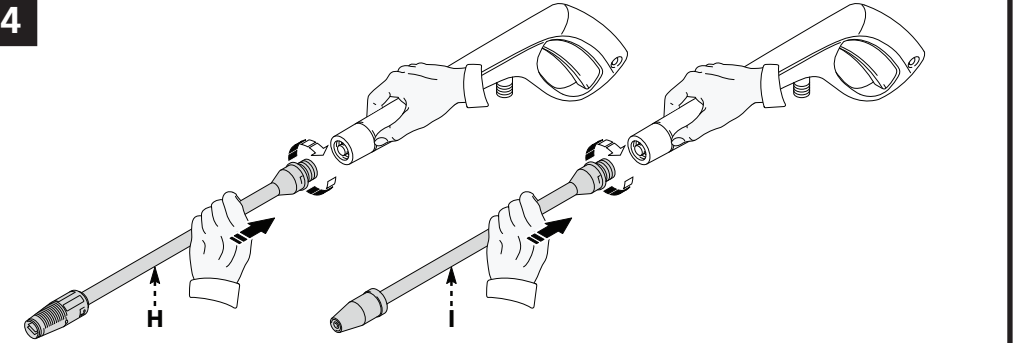
2

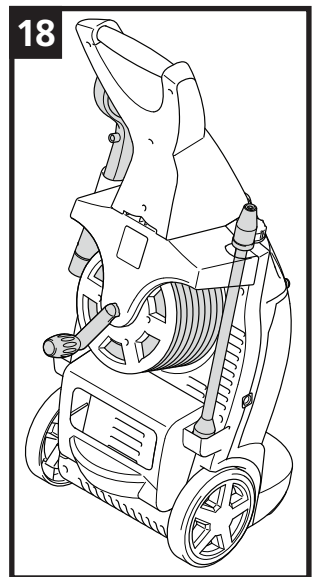
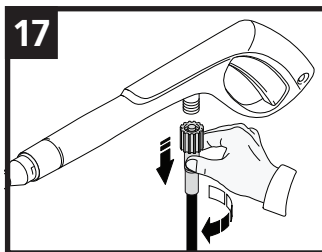
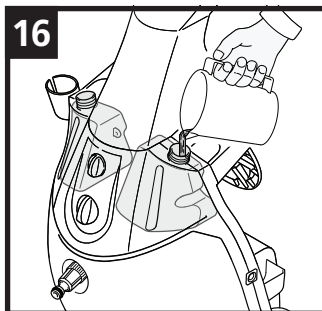
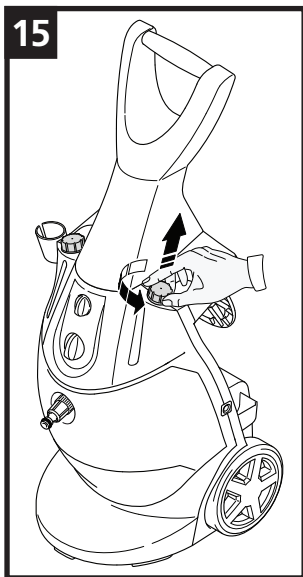
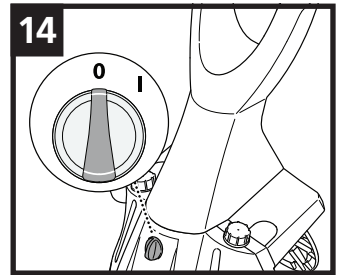
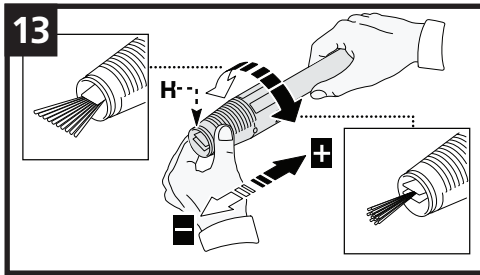
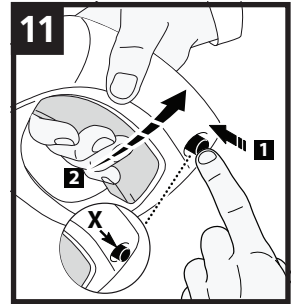
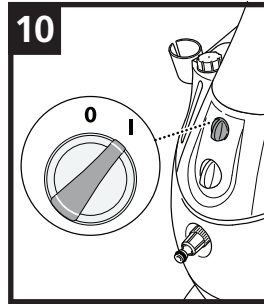
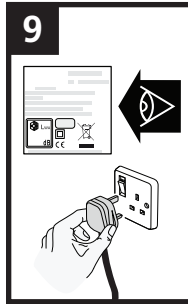
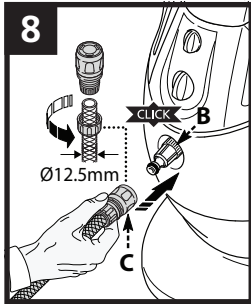
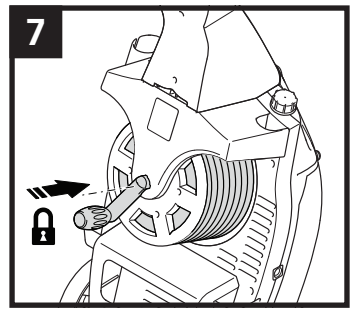
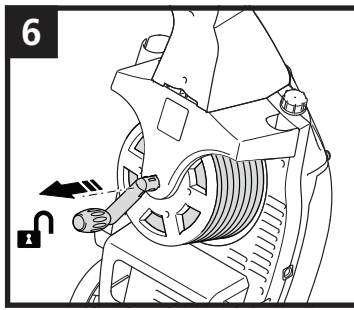
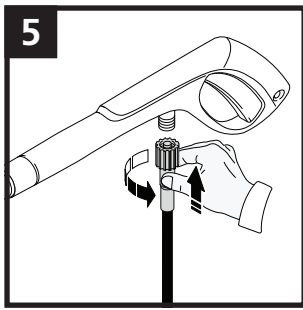


3



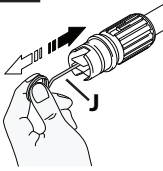
4



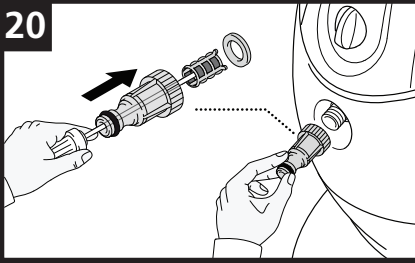


Maintenance

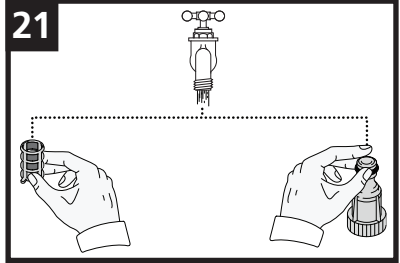
19



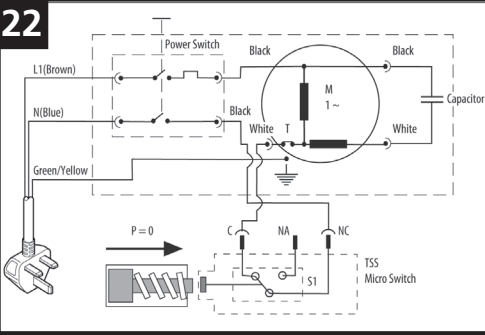
20



21



22



	Volt	1 ÷ 25 m	25 ÷ 50 m
	230	2 x 1.5 mm ²	2 x 2.5 mm ²

WARNING



Machine not suitable for connection to potable mains water.



Never point the gun at people, animals, live electrical equipment or the machine itself.

Contents

- A** Instruction Booklet
- B** Inlet Filter
- C** Waterstop Connector
- D** Pressure Washer
- E** Handle & Fixing Screw
- F** Reel Handle
- G** Gun
- H** Variable Spray Lance
- I** Turbo Spray Lance
- J** Nozzle Cleaning Tool

Read this manual through carefully before installing/using the cleaner, paying special attention to the SAFETY RULES/RESIDUAL RISKS.


To obtain the best performance from your unit, read this booklet carefully and follow the instructions each time you use the it.


- This appliance is intended for non-professional (domestic) use only.


Safety Rules/Residual Risks


SAFETY "DO NOTS"


- High pressure jets can be dangerous if subject to misuse. Do not direct the water jet at people, animals, live electrical equipment or the machine itself.
- Do not use the machine within range of people unless they wear protective clothing.
- Do not direct the jet against yourself or others in order to clean clothes or foot-wear.
- Do not use the appliance outdoors in the rain.


 To avoid the risk of explosion, do not use the appliance with inflammable or toxic liquids, or any products which are not compatible with the correct operation of the appliance.


 High pressure washers must not be used by children or persons with reduced physical, sensory or mental capabilities, or lack of experience and knowledge, unless they have been given supervision or instruction concerning use of the high pressure washers by a person responsible for their safety. Children should be supervised to ensure that they do not play with the appliance.


 High pressure hoses, fittings and couplings are important for the safety of the machine. Use only hoses, fittings and couplings recommended by the manufacturer.


 Do not operate the product if it has a damaged power cord or plug. If the power cord or plug is damaged, it must be replaced by a suitably qualified person.


 Do not use the appliance if the high pressure hose, the gun, lances or nozzles are damaged.


 Do not touch the plug and/or socket with wet hands.


 Do not jam the trigger in the operating position.


 Check that the rating plate is affixed to the appliance. If not, inform your dealer. Units without plates must not be used as they are unidentifiable and potentially dangerous.

 Do not tamper with or alter the calibration of the safety valve.


 Do not alter the original diameter of the spray head nozzle. May cause hazardous alteration of operating performance.


 Do not leave the appliance unattended when it is in operation.


 Do not move the appliance by pulling on the electrical cable.


 Make sure that cars do not drive over the high pressure hose.


SAFETY “DO’s”


 All electrical conductors must be protected against the water jet. The mains plug and the coupling between the extension cable must be water tight and never lay in the water.


 The appliance **MUST ONLY BE CONNECTED** to an adequate power supply in compliance with all applicable regulations.


 Use of a Safety Residual Device (RCD) will provide additional protection for the operator (30 mA).


 Wear protective clothing and safety goggles to protect against splashback.


 Always disconnect the electricity supply before starting to handle, clean, maintain, repair or install this appliance. Maintenance and/or repair of electrical components must be carried out by qualified staff.


 Before pressing the trigger, grip the gun firmly to counteract the recoil.


 Ensure that the pressure washer is connected to the mains water supply in accordance with local regulations


 After use, turn off the mains switch and water supply. Then squeeze the trigger to depressurise the unit before disconnecting the hose or gun. Failure to do so could result in personal injury or machine damage due to discharge of high pressure water.

 Before every use check that the power cord, plug and important parts such as the high pressure hose, gun and safety devices are not damaged.


 Only use detergents which will not corrode the coating materials of the high pressure hose/electrical cable which have been recommended by the manufacturer. The use of other detergents or chemicals may adversely affect the safety of the machine.


 Ensure that all people or animals keep a minimum distance of 16 yd. (15m) away.


 Observe a distance of at least 30cm when using the jet to clean painted surfaces, to avoid damaging paintwork.

 To ensure machine safety, use only original spare parts from the manufacturer or approved by the manufacturer.

Electrical Safety

 If you have to replace the fuse, only those that are ASTA or BSI approved to BS 1362 and with a rated current of 13 amps should be used. If there is a fuse cover fitted, this cover must be refitted after changing the fuse. If the fuse cover is lost or damaged, the plug must not be used. Spare fuse holders and fuses are available from electrical outlets.

 If the power supply cord or plug becomes damaged in any way, it should be replaced by a suitably qualified person. A replacement plug should be wired according to the following instructions.

 **IMPORTANT THIS APPLIANCE MUST BE EARTHED:** As the colours of the wires in the mains lead of this product may not correspond with the colours or markings identifying the terminals in your plug, you should proceed as follows:

The green/yellow lead should be connected to the EARTH terminal which may be marked with an 'E' or coloured green or green/yellow.

The wire that is coloured blue must be connected to the NEUTRAL terminal which may be marked with the letter N or coloured blue or black.

The wire that is coloured brown must be connected to the LIVE terminal which may be marked with the letter L or coloured brown or red.

If in doubt, contact a qualified electrician.

General Information

- This manual forms an integral part of the appliance and should be kept for future reference. Please read it carefully before installing/using the unit. If the appliance is sold, the Seller must pass on this manual to the new owner along with the appliance.

Disposing of packaging

- Please dispose of all packaging in an environmentally responsible way.

Safety signs

- Comply with the instructions provided by the safety signs fitted to the appliance. Check that they are present and legible; otherwise, fit replacements in the original positions.

Technical Information

Intended use

- This appliance has been designed for individual use for the cleaning of vehicles, machines, boats, masonry, etc, to remove stubborn dirt using clean water and biodegradable chemical detergents. Vehicle engines may be washed only if the dirty water is disposed of as per regulations in force.

- Intake water temperature: see data plate on the appliance.

- Intake water pressure: Max 10 bar, Min 1 bar.


- Operating ambient temperature: above 0°C.

The appliance is compliant with the EN 60335-2-79/A1 standard.

Improper use

- Use by unskilled persons or those who have not read and understood the instructions in the manual is forbidden. The introduction of inflammable, explosive and toxic liquids into the appliance is prohibited.
- Use of the appliance in a potentially inflammable or explosive atmosphere is forbidden. The use of non-original spare parts and any other spare parts not specifically intended for the model in question is prohibited. All modifications to the appliance are prohibited. Any modifications made to the appliance shall render the Declaration of Conformity null and void and relieve the manufacturer of all liability under civil and criminal law.

Safety devices


 **CAUTION - DANGER! Do not tamper with or adjust the safety valve setting.**

- The safety valve is also a pressure limiting valve. When the gun trigger is released, the valve opens and the water recirculates through the pump inlet.

- Safety button (X): prevents accidental spraying of water by pressing the red safety button (X) into locking position (fig.11).

Installation

Assembly

 **CAUTION - DANGER! All installation and assembly operations must be performed with the appliance disconnected from the mains power supply. As illustrated in the Assembly & Operation' diagrams.**

Electrical connection

⚠ CAUTION - DANGER! Check that the electrical supply voltage and frequency (V-Hz) correspond to those specified on the appliance data plate (fig.9). See Technical Data. The appliance should only be connected to a mains power supply equipped with an adequate earth connection and RCD (30 mA) to cut off the electricity supply in the instance of a short circuit.

Use of extension cables

- Use cables featuring "IPX5" protection level. The cross-section of the extension cable should be proportionate to its length; the longer it is, the greater its cross-section should be. (fig.22)
- For an extension cable up to 25m long, ensure that the cross sectional area of the cable core is at least 1.5mm². For extension cables 25m-50m long, ensure that the cross sectional area of the cable core is at least 2.5mm². Do not use extension cables longer than 50m.

Water supply connection

⚠ Caution - Danger! Only clean or filtered water should be used for intake. Please note the max input pressure. Place the appliance as close to the water supply system as possible.

Connection to the mains water supply

- The appliance can be connected directly to the mains drinking water supply only if the supply hose or tap is fitted with a backflow preventer valve. If one is not present, or if you are unsure, fit a backflow preventer valve (such as the Hozelock Non-Return Valve 2181) as per current regulations in force. Make sure that the hose is at least Ø12.5 mm and that it is reinforced.

Note: Water that has flown through backflow preventers is considered to be non-potable.

Using Your Pressure Washer

Controls

⚠ CAUTION - DANGER! During operation the appliance must be positioned as shown in (fig.12) on a sturdy, stable surface.

Start-up

⚠ CAUTION - DANGER! Before starting up the appliance check that the water supply hose is connected properly; use of the appliance without water will damage it; do not cover the ventilation grills when the appliance is in use.

- Ensure that the hose reel handle is in the unlocked (pulled outwards) position (fig.6).
- Pull out the hose. The hose reel and handle will rotate. For best results we recommend that the hose is fully unwound before use.
- Push the hose reel handle in so that the hose reel locks (fig.7). This ensures that the hose reel will not unwind more hose than you need while using the pressure washer.
- Turn on the water supply tap fully.
- Ensure that the red safety button (X) is released (fig.11).
- Depress the gun trigger for a few seconds and start up the appliance by setting the ON/OFF switch to ON/1.
- This model incorporates a Total Stop System (TSS system), with an automatic delivery flow cut-off system:
 - When the gun trigger is released the dynamic pressure automatically cuts out the motor.
 - When the gun trigger is depressed the automatic drop in pressure starts the motor and the pressure is restored after a very slight delay (see fig.11).
- If the TSS is to function correctly all gun releasing and depressing operations must be performed at intervals over 4-5 seconds. **DO NOT PULSE THE TRIGGER.**
- To prevent damage to the appliance, when running do not stop the water jet for more than 10 minutes at a time. If the product is not used for more than 10 minutes please ensure that the on/off switch is switched to off (OFF/0) to prevent damage to the appliance.

Adjusting the spray nozzle

- Water flow is adjusted by regulating the nozzle (H).

Stopping the appliance

- Set the ON/OFF switch to OFF/0.
- Depress the gun trigger and discharge the residual pressure inside the hoses.
- Engage the gun's red safety button (X) (fig.11).

Restarting

- Release the gun's red safety button (X) (fig.11).
- Ensure water is connected.
- Depress the gun trigger and discharge the residual air inside the hose.

- Set the on/off switch to ON/1 (fig.10).

Storage

- Switch the appliance off (OFF/0) (fig.14).
- Remove the plug from the socket.
- Turn off the water supply tap.
- Discharge the residual pressure from the gun by pressing the trigger, until all the water has come out of the nozzle.
- Disconnect the high pressure hose from the gun by unscrewing the nut and remove (fig.17).
- Ensure that the hose reel handle is in the unlocked (pulled outwards) position (fig.6).
- Wind the handle clockwise so that the hose winds onto the reel.
- **Push the hose reel handle in so that the hose reel locks (fig.7).**
- Engage the gun's red safety button (X) (fig.11).
- Return the gun to its storage position.

Filling and using detergent

- Unscrew the detergent tank lid (fig.15).
- Fill the tank with highly degradable detergent mixed with water as recommended on the detergent's directions (fig.16) and screw on the lid.
- The second detergent tank can be filled in the same way with more detergent or an alternative detergent for different application.
- Select the detergent tank you wish to use by twisting the selector knob left or right.
- To de-select detergent application, ensure at least 1 detergent tank is empty and turn the detergent selector knob to the empty detergent tank.

Using detergent feature

- Maximum cleaning is achieved by applying the detergent mixed with water to the surface while still dry. When applying detergent push the nozzle forward (Fig.13) so that the detergent is applied at low pressure. When dealing with vertical surfaces work from the bottom upwards. Leave the detergent to act for 1-2 minutes but do not allow the surface to dry. Starting from the bottom, use the high pressure jet by pulling the nozzle backward (Fig.13) at a minimum distance of 30cm. Do not allow the rinse water to run onto unwashed surfaces.

Maintenance

Any maintenance operations not covered by this chapter should be carried out by a qualified engineer.

⚠ CAUTION - DANGER! Always disconnect the plug from the power socket before carrying out any work on the appliance.

Cleaning the nozzle

- Disconnect the lance from the nozzle.
- Remove any dirt deposits from the nozzle hole using the tool (J). As shown in (fig.19).

Cleaning the filter

- Clean the suction filter after every 5 hours of operation or as required, as shown in (figs.20 & 21). The cleaning interval required will vary on the hardness of your water so you should inspect the filter regularly.

End-of-season storage

- Ensure there is no residual water left in the appliance and protect against frost.

Troubleshooting

Problem	Possible Causes	Remedy
Pump does not reach working pressure	Nozzle worn	Replace nozzle
	Water filter blocked	Clean filter (figs.20 & 21)
	Water supply pressure low	Turn on water supply tap fully
	Air being sucked into product	Check tightness of hose fittings
	Air in pump	Switch off the appliance and keep de-pressing and releasing the gun trigger until the water comes out in a steady flow. Switch the appliance back on again
	Adjustable nozzle not positioned correctly	Turn the adjustable nozzle (+) (fig.13)

Problem	Possible Causes	Remedy
Pressure drops during use	Water intake from external tank	Connect appliance to the mains water supply
	Intake water too hot	Reduce temperature
	Nozzle clogged	Clean nozzle (fig.19)
Motor 'sounds' but fails to start	Insufficient power supply	Check that the voltage of the mains power supply line is the same as that on the plate (fig.9)
	Voltage loss due to use of extension cable	Check characteristics of extension cable
	Appliance not used for long period of time	Contact Hozelock Consumer Services on 0121 313 1122
	Problems with TSS device	Contact Hozelock Consumer Services on 0121 313 1122
Motor fails to start	No electrical power	Check that the plug is firmly in the socket and that the mains voltage supply is present
	Problem with TSS device	Contact Hozelock Consumer Services on 0121 313 1122
Water leakage	Seals worn	Contact Hozelock Consumer Services on 0121 313 1122
Appliance noisy	Water too hot	Reduce temperature (see technical data)
Oil leakage	Seals worn	Contact Hozelock Consumer Services on 0121 313 1122
Motor starts even with gun trigger is released	Nozzle clogged	Clean nozzle (fig.19)
	High pressure system or pump hydraulic circuit not watertight	Contact Hozelock Consumer Services on 0121 313 1122

Problem	Possible Causes	Remedy
No water delivery when gun trigger is depressed (with supply hose connected)	Nozzle clogged	Clean nozzle (fig.19)

If the motor starts and does not restart during operation, wait 2-3 minutes before repeating the start-up procedure (overload cutout has been tripped).

If the problem recurs more than once, call Hozelock Consumer Services on 0121 313 1122.

Technical Data*

Technical Data	Unit	7902
Output	L/min	5.7
Maximum Output	L/min	6.8
Pressure	MPa	11
Maximum Pressure	MPa	15
Power	kW	2.1
T° input (max.)	°C	50
Maximum input pressure	MPa	1
Recoil force of the gun at maximum pressure	N	11.5
Motor Insulation	-	Class F
Motor Protection	-	IPX5
Voltage	V/Hz	230-240/50
Sound Level: ** $(K = 3dB(A))$ L _{PA} (EN 60704-1) L _{WA} (EN 60704-1)	dB (A) dB (A)	75.6 84
Unit Vibrations *** $(K = 1.5m/s^2)$	M/s ²	1.75
Net Weight	kg	18.2
Weight (Packed)	kg	24

* Subject to technical modifications

** The sound intensity level for the operator may exceed 75.6dB and ear protection measures are necessary.

*** The declared vibration value has been measured in accordance with a standard test method and may be used for comparing one tool with another. The declared vibration value may also be used in a preliminary assessment of exposure.

WARNING! The vibration emission value during actual use of the tool can differ from the declared value depending on the ways in which the tool is used. Identify safety measures to protect the operator that are based on an estimation of exposure in the actual conditions of use (taking account of all parts of the operating cycle such as the times when the tool is switched off and when it is running idle in addition to the trigger time).

HOZELOCK

Model
7902 0000

Heavy Duty Pressure Washer 150

MODEL
NUMBER

230V-240V~ 50Hz 2.1kW IPX5
110 bar (11.0 MPa) Tmax 50°C
Max 150 bar (Max 15 MPa) W=18.2kg
Pin Max: 10 bar (1.0 MPa) Q = 5.7 l/min; Q max: 6.8 l/min

SERIAL
NUMBER



Serial No: XXXXX XXXXX

Made in PRC www.hozelock.com 64055-002
Hozelock Ltd., Midpoint Park, Birmingham. B76 1AB. England

Warranty

This Hozelock product is covered under guarantee to be free of defective parts and materials for a period of 1 year from the date of purchase, providing that the product is used for normal domestic purposes.

The guarantee runs for 1 year after purchase provided that;

- You have followed the installation and operating instructions.
- You consult our helpline (0121 313 1122) early enough for any problems to be put right.

The guarantee covers materials, construction and conformity defects during the guarantee period, during which time the manufacturer will authorise the replacement or refund of a defective unit, at the point of purchase. This does not affect your statutory rights.

The guarantee does not cover defects caused by or resulting from:

- Incorrect use, abuse or neglect
- Trade, professional or hire use
- Failure to service and maintain the unit as specified in the user's manual
- Unauthorised repairs
- Use of non-original accessories/spare parts
- Frost – this machine and all accessories must be protected from frost
- Damaged caused by foreign objects, substances or accidents

Please keep your receipt as proof of purchase.

If your product is not working properly, please contact us on 0121 313 1122.



PLEASE NOTE:

Your appliance contains valuable materials which can be recovered or recycled. Leave it at a local civic waste collection point.

Declaration of Conformity

Hozelock declare that the following
Hozelock Pressure Washers:

- **Heavy Duty Pressure Washer 150 (7902)**

Comply with the requirements of:

- **2006/95/EC – Low Voltage Directive**
- **2004/108/EC – EMC Directive**
- **2006/42/EC - Machinery Directive**
- **2000/14/EC – Outdoor Noise Directive**

and conform to the following harmonised
European standards:

- **EN 60335-1: 2002 + A1:2004 + A11:2004
+ A12:2006 + A13:2008**
- **EN 60335-2-79:2009**
- **EN 62233:2008**
- **EN 55014-1:2006**
- **EN 55014-2:1997 + A1:2001**
- **EN 61000-3-2:2006**
- **EN 61000-3-3:1995 + A1:2001 + A2:2005**
- **EN 60704-1:1997**

Measured Sound Power level: 82.5 dB(A)

Guaranteed Sound Power Level: 84 dB(A)

The conformity assessment method was
according to Annex V of the directives.

Place of Issue: Sutton Coldfield, England

Date of Issue: 29th December 2009

Signed:

Nick Iacofano
Nick Iacofano
Director of Engineering, Hozelock Ltd.
Midpoint Park, Birmingham. B76 1AB.



Hozelock Ltd.
Midpoint Park
Birmingham, B76 1AB. England

Tel: +44 (0) 121 313 1122

info@hozelock.com

www.hozelock.com

33604-005