

America's Dental Equipment Company

Clinic Operator

Owners Guide



Rev 2/15

Dansereau

(800)423 - 5657 / WWW.DHPDENTAL.COM

DANSEREAU HEALTH PRODUCTS, INC.

AMERICA'S DENTAL EQUIPMENT COMPANY

Dansereau Health Products, Inc. has been manufacturing Dental Equipment for over 40 years. We have compiled a significant amount of data and information regarding the manufacturing, use and maintenance of dental equipment. Information contained in this manual will assist you in use and maintenance of your Dansereau equipment. We offer the most comprehensive 10 year warranty on USA manufactured dental equipment today.

Our Customer Service Department is the most progressive within the dental industry with an ever growing series of support documents and video available thru Email and the Internet. They are easily accessible and completely descriptive for the dentist, staff or any technician to use in the long term support of Dansereau Health Products, Inc.

SUPPORT ACCESS

Dansereau Health Products, Inc.

1581 Commerce Street

Corona, CA 92880

Toll Free (800) 423-5657

Phone (951) 549-1400

Fax (951) 549-1411

Website-WWW.DHPDENTAL.COM

TESTING LABORATORIES

ETL Testing Lab.- Report #530937

Medical and Dental Equipment

Category—6—UL 544-2nd Ed.

CAN/CSA Testing Laboratories- Report #531003

Canadian Standard for Medical Electrical Equip.

No 601.1—M90

US Food and Drug Administration

Medical Device Registry- #202716

DENTAL CHAIR SPECIFICATIONS:

Lift Patient Capacity: 400Lbs.

Dental Chair Weight: 360lbs

Dental Equipment: Classification B (Inside Use Only) IPX4

DANSEREAU HEALTH PRODUCTS, INC.

AMERICA'S DENTAL EQUIPMENT COMPANY

TECHNICAL DESCRIPTION:

The dental chair is used to position the patient so the oral cavity is in the desired position for the dentist to perform various dental procedures. The Dental chair is electromechanically operated. There are two dynamic functions, the base (up/down) and the back (forward/back). These functions are activated by use of either a foot switch or hand-operated touch pad.




The dental chair has the provision to mount additional dental equipment (over the patient delivery system, refer to following sections for more information), therefore a stable base is included with the dental chair to accommodate such additions.

Power to the chair is either 115volts or 230volts. The power is delivered at 115volts directly to the circuit board microprocessor. 230volts is delivered thru a 230v transformer and to the circuit board microprocessor. Software in the microprocessor controls the movement of the dental chair. The dentist can program preset positions with this dental chair.

The dental chair is classified as a Class 1 product under rule 1 of Annex IX of the MDD 93/42/EEC: accordingly, the provisions of Annex VII apply.

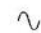






NOTE: Regarding International Electrical Specification: Dansereau does not supply provisions for international power requirements. This will be configured by the equipment dealer in the country of destination.

SAFETY AND IDENTIFICATION MARKINGS:

-  **CAUTION.** Failure to carefully follow the described procedure may result in damage to the equipment.
-  **WARNING.** Failure to carefully follow the described procedure may result in damage to the equipment and the operator.
-  Risk of electrical shock present. Make sure power is disconnected before attempting this procedure.

IEC Symbols

The following symbols conform to IEC labeling standards and may be located throughout the product:

-  AC (Alternating Current)
-  Protective earth (Ground)
- IPX4 Protected against splashing water
-  Attention: Consult accompanying documents
-  OFF
-  ON
-  Type B equipment (Protected against electrical shock)
-  Dangerous voltage

Safety Labels



(See *Definitions of Symbols* section)



CALIFORNIA DENTAL CHAIR ASSEMBLY GUIDE

Table of Contents:

- 1) Terms Conditions, Testing Labs, Specifications
- 2) Labeling and Technical Description
- 3) Procedures and Policy
- 4) Simple Installation Guide
- 5) Operation Features
- 6) Care and Maintenance of Surfaces and Cushions
- 7) Chair Specs and Measurements
- 8) Warranty

PAYMENT PROCEDURES:

Personal and Business Checks, Master and Visa Credit Cards, Wire Transfers, Cashiers Checks and Money Orders.

DAMAGED FREIGHT

Dansereau utilizes superior packaging procedures, however shipping accidents can occur. It is your responsibility to note any unusual conditions or subsequent damage to the shipping crate on the Bill of Lading prior to acceptance and signature for the product received from the freight carrier. After opening of boxes, concealed damage should be noted and reported immediately to Dansereau and the freight carrier. All freight is shipped FOB, Corona CA. and although Dansereau is not responsible for the damage we will support you in all claims and will send replacement parts immediately.

PRODUCT RETURNS:

Dansereau manufactured products are custom made and all orders are non cancellable.

WARRANTIES:

Dental chair electric motors, wiring harnesses, oil less bushings, base and chair frame integral parts.-10 years (5 Years 100%, 5 Years Prorated accordingly)

SIMPLE ASSEMBLY GUIDE

Remove Chair Base from Pallet



1

Remove Chair Top from Box

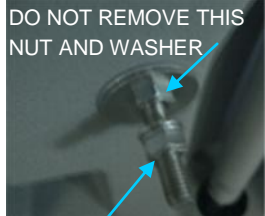


2

Insert Seat Back Bolt
Thru Yoke and Motor Shaft



Bottom of Chair



DO NOT REMOVE THIS
NUT AND WASHER
REMOVE THIS NUT
AND WASHER

3

Set Seat on Chair Base
Align the Bolts thru Holes



4

Locate Molex Connectors
Under Chair Toe

5



Plug Molex Connectors Together
and Insert in Hole in Chair Frame

6

Plug Chair into Power
Source and Raise Chair



Remove Upper Base Cover
4 Screws

7



Thread on ALL 4 BOLTS to
secure Chair Top to Chair Base

8

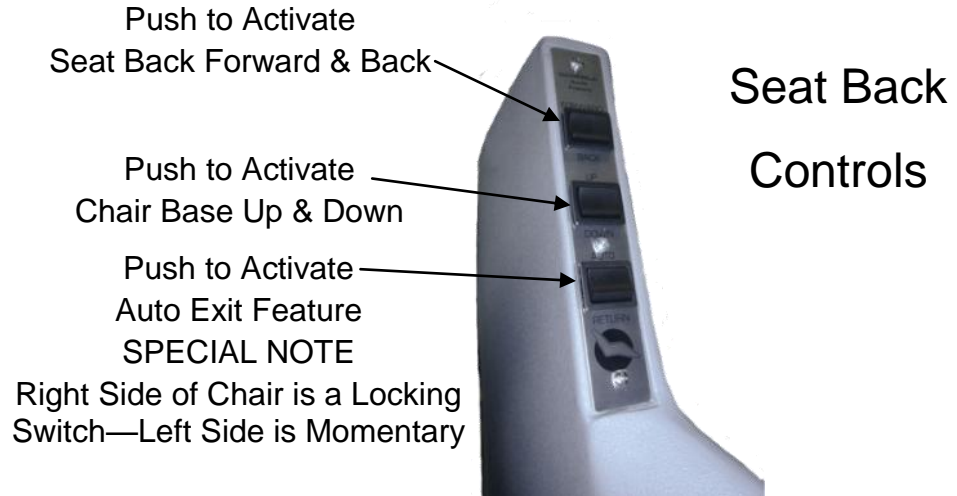


2 In the Front and 2 in the Back

Re-install Upper Base Cover

Dental Chair is Assembled

OPERATING INSTRUCTIONS

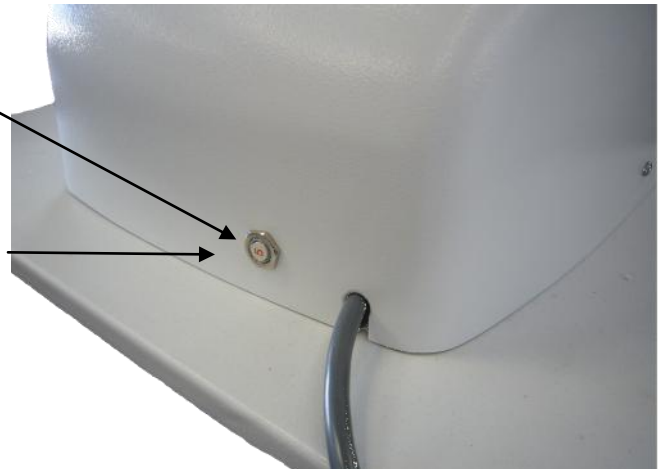


SPECIAL NOTE: * If the Auto Return Button is in its Locked Position and another button is depressed you may "Blow the Fuse". See Below how to reset the fuse.

California Chair
Reset Fuse

Correct Position:

If Button is out
Firmly Press in to
correct position



Foot Controls

Push to Activate
Chair Base
Up & Down



Push to Activate
Seat Back
Forward & Back

CALIFORNIA CHAIR PARTS

California Chair
Headrest Pad
DA1131-C-P - \$75

California Chair Pillow
DA1131- P - \$95

California Chair
Seat Back Cushion
DA1136 - \$250

California Chair Arm
Slings
DA1123—AS - \$90

California Chair
Seat Cushion
DA1136 - SC - \$300

California Chair
Pivot Pin Assembly
DA1152- PA - \$65

California Chair
Toe Cover
DA1136 - TC - \$25

California Chair
Upper Base Cover
DA1145 - U - \$95

California Chair Lower
Base Cover
DA1145 - L - \$165

California Chair Base Plate
Cover
DA1146 - P - \$165

California Chair
Reset Fuse
DA? ??

California Chair Internal Parts

1) Chair Top Motor

DA? ??

2) Base Motor

DA? ??

3) Limit Switches

DA? ??

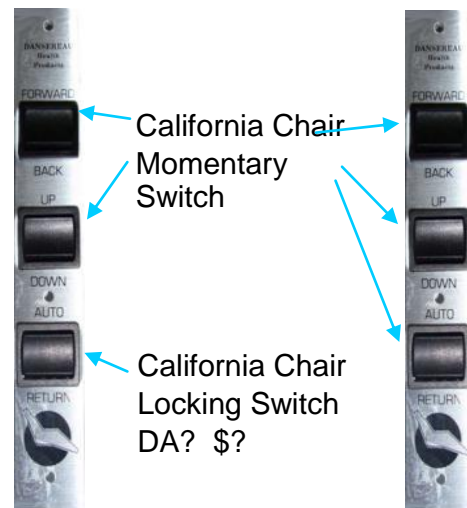
4) Wiring Harness

DA? ??

NOTE: Prepositioning Circuit Board is Optional Item on Chair
Contact Dansereau for Parts.



Touch Pad Switches
DA? - ??



California Chair
Momentary
Switch

California Chair
Locking Switch
DA? ??

CLEANING & DISINFECTING DENTAL EQUIPMENT

Infection control in the dental facility continues to be a high priority for all staff working within the dental office. OSHA, the ADA and CDC are all involved in this complex issue. Dansereau will not attempt to specify the required intervals for disinfection nor can they recommend the overall best surface disinfectant. You can refer to the appropriate organizations for more information on disinfecting your dental equipment.

Techniques:

Barrier Technique:

Dansereau does advocate the barrier technique whenever possible the use of disposable barriers, with changes between patients, will ensure the finish and appearance of your Dansereau dental equipment will be preserved.

Chemical Disinfection:

If Chemical Disinfection is the disinfection method of choice it is imperative that a mild soap and warm water be used once per day to mitigate the residual effects of Chemical Disinfection Solutions. When using Chemical Disinfection Solutions always pay strict attention to use detail, including appropriate measurements when using concentrated disinfection solutions. Disinfection Solutions, used in the recommended strength, can be relatively harmless to the surface of your Dansereau dental equipment.

Unacceptable Disinfectants

Disinfectants with the following compositions will harm the surface finishes of dental equipment and are not recommended. Use of these products will void your warranty.

Chemical Composition

Chemical Composition

Strong Phenols/
Phenol-Alcohol Combinations

Iodophors ***

Sodium Hypochlorite/
Household Bleach

Mild Phenols

Glutaraldehyde / Phenol Sprays

Alcohol / Alcohol Based Wipes
Household Cleaners

Synergized Super Quat

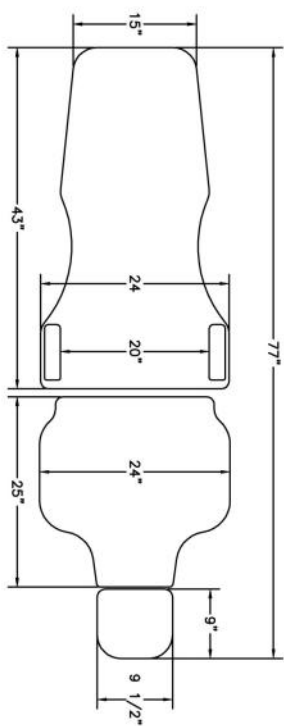
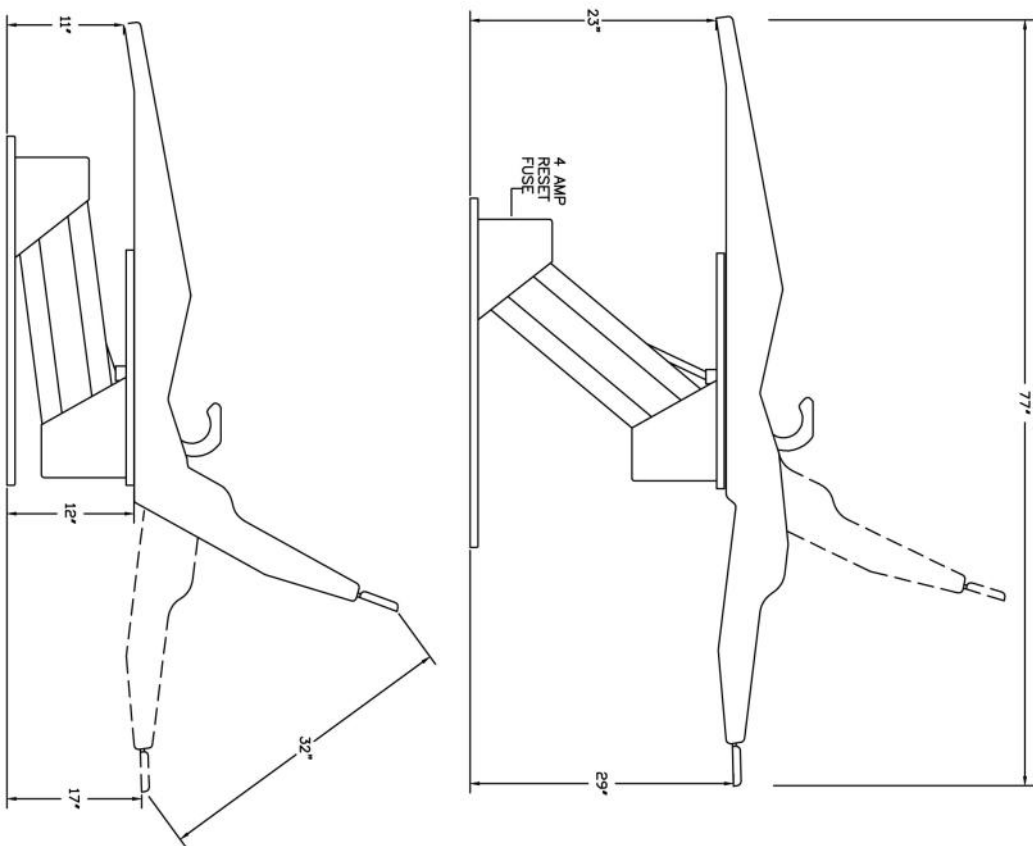
Phenol / Water Sprays

Damage and discoloration of the surface finishes caused by disinfectants are NOT covered by warranties.

Iodophor-based disinfectants will cause yellow staining on many surfaces. Regular washing with soap and water will minimize this staining. Iodophor neutralizers such as Promedyn are also available.

CALIFORNIA DENTAL CHAIR DIMENSIONS

CALIFORNIA CHAIR SPECIFICATIONS



SPECIFICATIONS

CHAIR BACK MOTOR

- 115V-60HZ
- 1/8 HORSEPOWER
- SINGLE PHASE
- THERMALLY PROTECTED
- TIME RATING- INTERMITTENT DUTY
- 2 AMP

BASE MOTOR

- 115V-60HZ
- 1/3 HORSEPOWER
- SINGLE PHASE
- RPM 3250
- THERMALLY PROTECTED CAPACITOR 68 MFD 440V
- TIME RATING- INTERMITTENT
- 4 AMP RESET FUSE

MOUNTING DELIVERY SYSTEM ON DENTAL CHAIR



Remove Delivery System from Box, careful as Delivery System is Top Heavy. Delivery System weight about 75lbs



Raise Chair to highest position. Slide the Mounting Plate under the chair steel plate and insert and tighten the 5 Bolts for attaching the delivery system to the dental chair. A ratchet will be required to tighten the bolts.



TELESCOPING ARM INSTALLATION



Insert Telescoping Arm Pin into the Telescoping Arm Bracket on the Unit Post

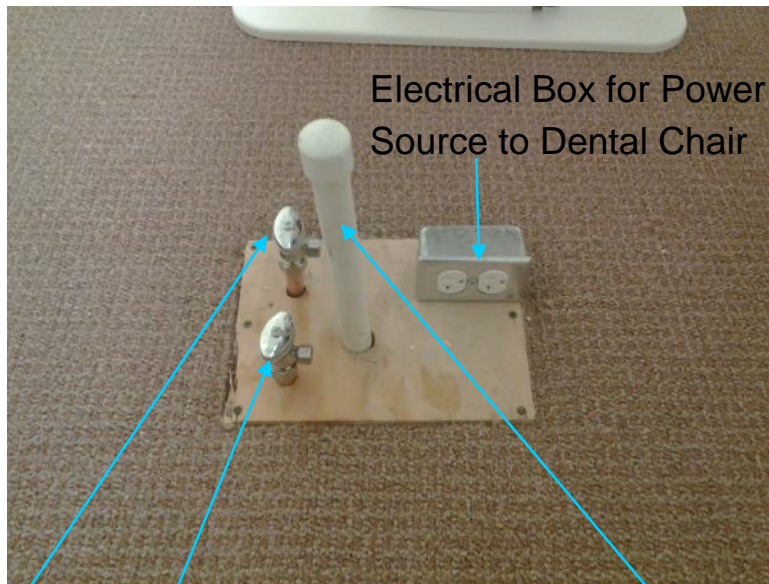


Insert HVE Tubing into Amalgam Cannister and Hang HVE, Saliva ejector and syringe on assistants package.



DENTAL JUNCTION BOX APPEARANCE

Dental Junction Box Ready for Installation of Dental Equipment

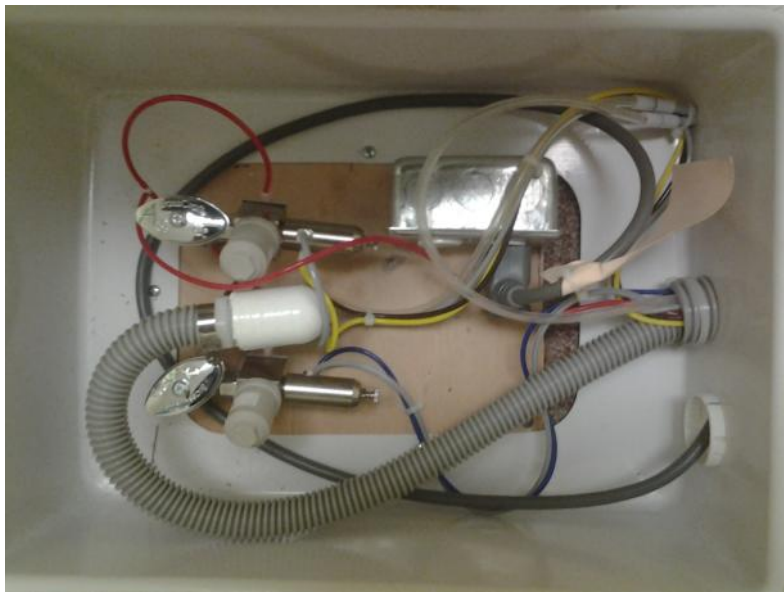


Electrical Box for Power Source to Dental Chair

Chrome Angle Stops with 3/8" Compression Fitting

Vacuum Line - Dansereau supplies fitting

NOTE: If your Dental Junction Box Plumbing and Electrical DOES NOT look like this you are not ready for installation of your Dental Equipment.



Complete Dental Junction Box

DENTAL JUNCTION BOX INSTALLATION



Dental Junction Box
Remove Lid

Insert Master Valve Into
3/8" Angle Stop Fitting

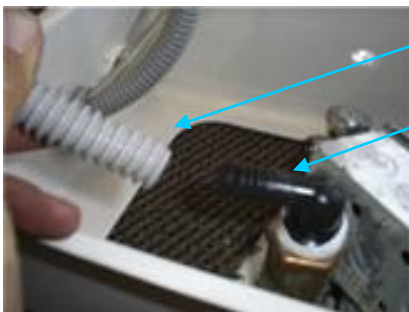


Make Sure Master
Valve is completely
inserted

Tighten Angle Stop Nut
with Open End Wrench.



Do Not Over Tighten



Vacuum Tubing
Hose Fitting

Insert Vacuum Tubing
on to the Hose Fitting.
Lubricant will assist.



Installed Vacuum Line

Attaching Dental J Box to Floor can be
done either with Screws or
Double Side Tape (Recommended).

DENTAL LIGHT INSTALLATION

Remove Dental Light Arm from Box, Careful it is a spring arm !



Slide Light Cord down thru the post. You may need to use a pull wire.



Light Arm is properly seated on the light post.



Remove Light Head from Box



Connect Light Head to Light Arm Connection



Slide Connector and Light Hub into Light Arm



Align Holes and Insert Screw with Allen Wrench



CAUTION !!! Make sure Light Collar is on prior to attaching light connections.

DENTAL LIGHT TRANSFORMER INSTALLATION



Mount the Transformer under the Delivery System Mounting Plate

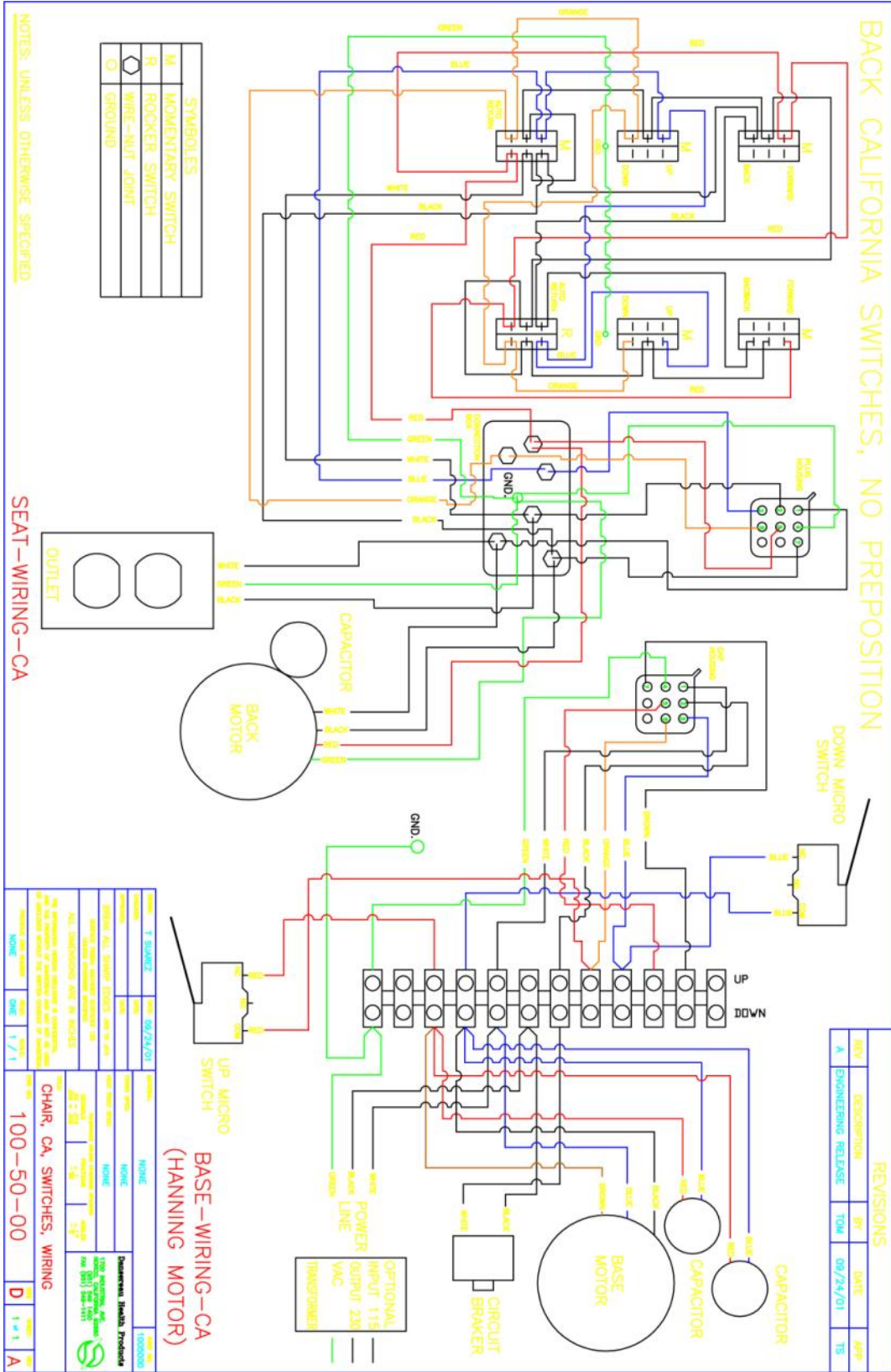


Plug the dental light cord into the dental light transformer plug, Make sure the pins align properly and make good connection.

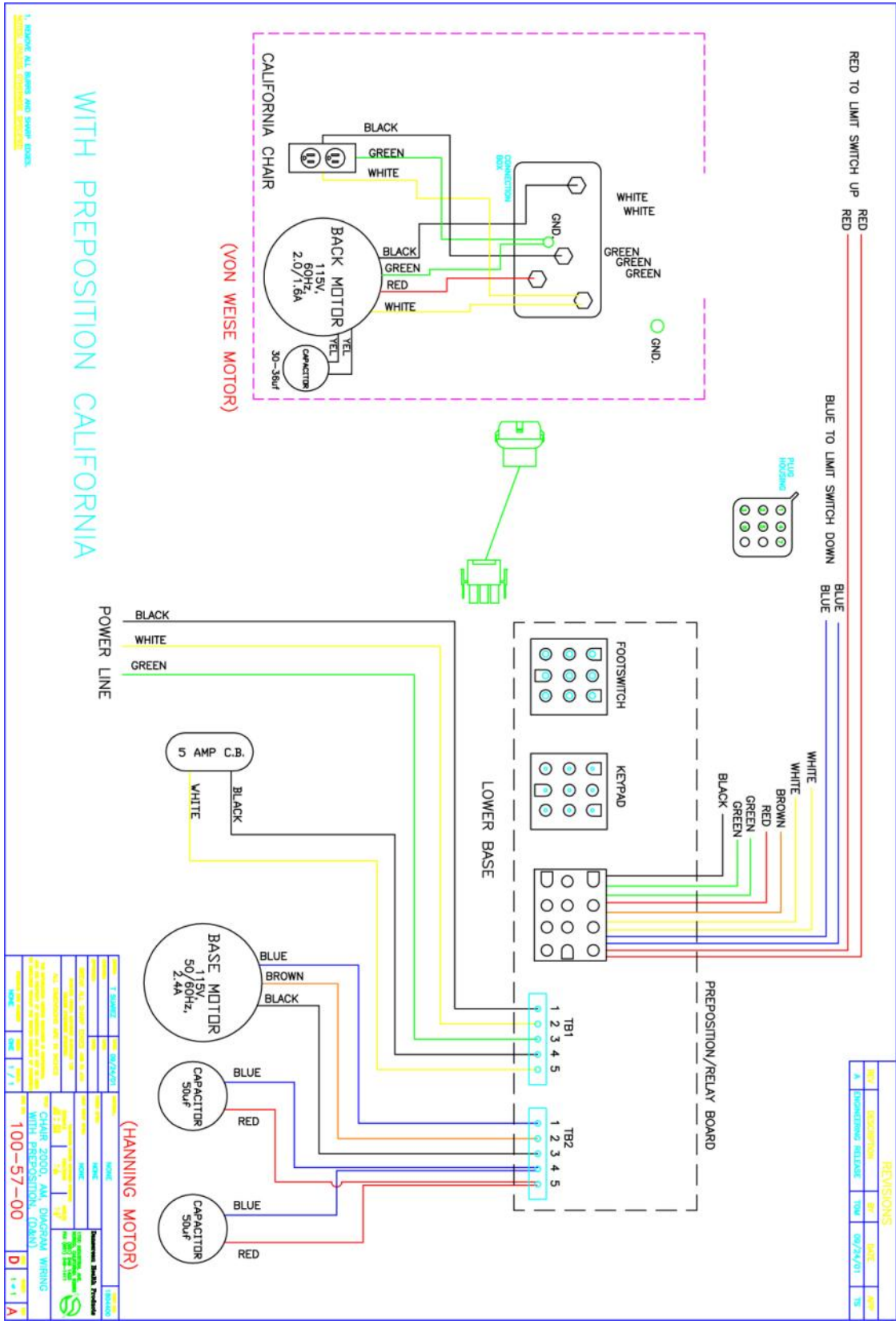


If the Transformer Plug is not plugged into the Dental Chair Outlet, proceed with the plugging into Dental Chair Outlet.

WIRING SCHEMATIC NO PRESET



WIRING SCHEMATIC WITH PRESET



WITH PREPOSITION CALIFORNIA

(HANNING MOTOR)

(VON WEISE MOTOR)

1. REPLACE ALL WIRES AND SWAGE KEYS
2. CHECK TIGHTNESS

REVISIONS			
REV	DESCRIPTION	DATE	BY
A	COMPENSATE RELEASE	TW	09/24/01

REV	DESCRIPTION	DATE	BY
1	100-57-00	7/1	D

CHAIR 2000, AM, DIAGRAM WIRING
100-57-00

MANUFACTURER'S WARRANTY

Dansereau has the most comprehensive product warranty programs available to the dentist today. We offer a 10 Year Warranty on our Dental Chairs complete features listed below:

Upon Installation you Dental Chair is registered automatically with the Dansereau 10 Year Warranty.

5 Years 100% / 6-10 Years Prorated Annually

Dental Chair Electric Motors, Chair Base Frame, Chair Frame and Wiring Harness's

1 Year 100%

Circuit Board and Prepositioning Switches.

6 Months 100%

Dental Chair Cushions Seam's and Foam

Broken or User Damaged Items are Not Covered under Warranty.

Minimum Maintenance is required in order to guarantee full use of warranties

Dansereau Dental Chairs do not require any lubrication or service. Dental Cushions will require routine cleaning in order to maintain asepsis in the Dental Office, care shall be taken to use approved cleaning solutions in order to maintain the finish and integrity of the dental seating.

GUARANTEE

Dansereau will guarantee against defects in material and workmanship. Defective parts will be repaired or replaced: no claim for labor or consequential damages will be allowed. All replacement parts claimed defective will be filled in the usual manner, such invoice being subject to adjustment after the alleged defective material has been returned and inspected by the manufacturer. The warranty does not cover damage resulting from improper installation, maintenance, accident or misuse.