

Register your product and get support at  
[www.philips.com/support](http://www.philips.com/support)

32PFL3506



---

EN User Manual

---

FR Manuel d'Utilisation

---

ES Manual del Usuario

---

EN: For further assistance, call the customer support service in your country.

- To obtain assistance in the U.S.A., Canada, Puerto Rico, or the U.S. Virgin Islands, contact Philips Customer Care Center at **1-866-309-0841**
- To obtain assistance, contact Philips Customer Care Center at México D.F. and Área Metropolitana: **58 87 97 36**, Interior de la Republica: **01 800 839 19 89**, Costa Rica: **01 800 052 1564**, Colombia: **01 800 952 0640**

Enter below the model and serial numbers located on the back and right side of the TV cabinet.

FR: Pour obtenir de l'aide supplémentaire, communiquez avec le centre de service à la clientèle de votre pays.

- Pour obtenir de l'aide aux États-Unis, au Canada, à Puerto Rico ou aux Îles Vierges américaines, communiquez avec le centre de service à la clientèle Philips au : **1-866-309-0841**
- Entrez en contact avec le centre de soin de client de Philips à, México D.F. et Área Metropolitana: **58 87 97 36**, Interior de la Republica: **01 800 839 19 89**, Costa Rica: **01 800 052 1564**, Colombia: **01 800 952 0640**

Entrer ci dessous le modèle et le numéro de série situés derrière à droite sur le dos du téléviseur.

ES: Para obtener más información, llame al servicio de soporte al cliente de su país.

- Para obtener asistencia en los Estados Unidos, en Canadá, Puerto Rico o en las Islas Vírgenes de los Estados Unidos, comuníquese con Centro de atención al cliente de Philips al **1-866-309-0841**
- Para obtener asistencia, póngase en contacto con CENTRO DE INFORMACION AL CLIENTE, México D.F. y Área Metropolitana: **58 87 97 36**, Interior de la Republica: **01 800 839 19 89**, Costa Rica: **01 800 052 1564**, Colombia: **01 800 952 0640**

Escriba a continuación el modelo y número de serie que están localizados en lado derecho y parte posterior de el gabinete de el televisor.

Lea esta manual antes de usar el producto

EN: To obtain a more detailed electronic copy of this manual, go to [www.philips.com/support](http://www.philips.com/support)

FR: Pour obtenir une copie électronique plus détaillée de ce manuel, allez sur [www.philips.com/support](http://www.philips.com/support)

ES: Para obtener una copia electrónica más detallada de este manual, visite [www.philips.com/support](http://www.philips.com/support)

MODEL NUMBER

SERIAL NUMBER

**PHILIPS**

# Contents

---

<b>1</b>	<b>Notice</b>	<b>5</b>
<hr/>		
<b>2</b>	<b>Important</b>	<b>6</b>
	Environmental care	6
	Regulatory notices	6
<hr/>		
<b>3</b>	<b>Get started</b>	<b>6</b>
	Positioning the TV	6
	Connecting the antenna or cable	6
<hr/>		
<b>4</b>	<b>Use your TV</b>	<b>7</b>
	Still mode	7
	Watching channels from a set-top box	7
	Watching connected devices	7
	Switching audio mode	8
<hr/>		
<b>5</b>	<b>Use more of your TV</b>	<b>8</b>
	Changing picture and sound settings	8
	Closed caption	10
	ECO	11
	Set your location to home	11
	Viewing photos and watching videos on a USB storage device	11
<hr/>		
<b>6</b>	<b>Install channels</b>	<b>12</b>
	Autoprogram	12
<hr/>		
<b>7</b>	<b>Troubleshooting</b>	<b>12</b>
	Downloading an electronic copy	12
	Contact us	12
<hr/>		
<b>8</b>	<b>Specifications</b>	<b>13</b>
<hr/>		
<b>9</b>	<b>Warranty</b>	<b>14</b>

**Note:** Individual menu items in the TV are dynamic and will change based on type of input media, options enabled/disabled, and some other factors such as the version of the software installed on the TV.

Return your Product Registration Card or register online at [www.philips.com/support](http://www.philips.com/support) today to get the very most from your purchase.

Registering your model with Philips makes you eligible for all of the valuable benefits listed below, so don't miss out. Complete and return your Product Registration Card at once, or register online at [www.philips.com/support](http://www.philips.com/support) to ensure:

**\*Product Safety Notification**

By registering your product, you'll receive notification - directly from the manufacturer - in the rare case of a product recall or safety defect.

**\*Additional Benefits**

Registering your product guarantees that you'll receive all of the privileges to which you're entitled, including special money-saving offers.

Know these **safety symbols**



- This "bolt of lightning" indicates uninsulated material within your unit may cause an electrical shock. For the safety of everyone in your household, please do not remove product covering.
- The "exclamation point" calls attention to features for which you should read the enclosed literature closely to prevent operating and maintenance problems.

**WARNING:** To reduce the risk of fire or electric shock, this apparatus should not be exposed to rain or moisture and objects filled with liquids, such as vases, should not be placed on this apparatus.

**CAUTION:** To prevent electric shock, match wide blade of plug to wide slot, fully insert.

**ATTENTION:** Pour éviter les choc électriques, introduire la lame la plus large de la fiche dans la borne correspondante de la prise et pousser jusqu'au fond.

**PHILIPS**

Visit our World Wide Web Site at <http://www.philips.com/support>

**CHILD SAFETY:**

It Makes A Difference How and Where You Use Your Flat Panel Display

Congratulations on your purchase! As you enjoy your new product, please keep these safety tips in mind:

**THE ISSUE**

- The home theater entertainment experience is a growing trend and larger flat panel displays are popular purchases. However, flat panel displays are not always supported on the proper stands or installed according to the manufacturer's recommendations.
- Flat panel displays that are inappropriately situated on dressers, bookcases, shelves, desks, speakers, chests or carts may fall over and cause injury.

**THIS MANUFACTURER CARES!**

- The consumer electronics industry is committed to making home entertainment enjoyable and safe.

**TUNE INTO SAFETY**

- One size does NOT fit all. Follow the manufacturer's recommendations for the safe installation and use of your flat panel display.
- Carefully read and understand all enclosed instructions for proper use of this product.
- Don't allow children to climb on or play with furniture and television sets.
- Don't place flat panel displays on furniture that can easily be used as steps, such as a chest of drawers.
- Remember that children can become excited while watching a program, especially on a "larger than life" flat panel display. Care should be taken to place or install the display where it cannot be pushed, pulled over, or knocked down.
- Care should be taken to route all cords and cables connected to the flat panel display so that they cannot be pulled or grabbed by curious children.




**WALL MOUNTING: IF YOU DECIDE TO WALL MOUNT YOUR FLAT PANEL DISPLAY, ALWAYS:**

- Use a mount that has been recommended by the display manufacturer and/or listed by an independent laboratory (such as UL, CSA, ETL).
- Follow all instructions supplied by the display and wall mount manufacturers.
- If you have any doubts about your ability to safely install your flat panel display, contact your retailer about professional installation.
- Make sure that the wall where you are mounting the display is appropriate. Some wall mounts are not designed to be mounted to walls with steel studs or old cinder block construction. If you are unsure, contact a professional installer.
- A minimum of two people are required for installation. Flat panel displays can be heavy.

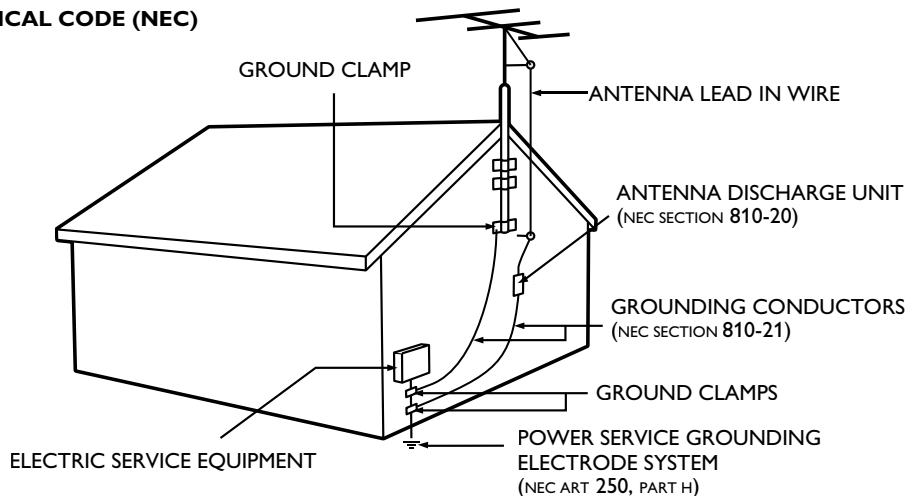


# IMPORTANT SAFETY INSTRUCTIONS

## Read before operating equipment

1. Read these instructions.
2. Keep these instructions.
3. Heed all warnings.
4. Follow all instructions.
5. Do not use this apparatus near water.
6. Clean only with a dry cloth.
7. Do not block any of the ventilation openings. Install in accordance with the manufacturer's instructions.
8. Do not install near any heat sources such as radiators, heat registers, stoves, or other apparatus (including amplifiers) that produce heat.
9. Do not defeat the safety purpose of the polarized or grounding-type plug. A polarized plug has two blades with one wider than the other. A grounding type plug has two blades and third grounding prong. The wide blade or third prong are provided for your safety. When the provided plug does not fit into your outlet, consult an electrician for replacement of the obsolete outlet.
10. Protect the power cord from being walked on or pinched particularly at plugs, convenience receptacles, and the point where they exit from the apparatus.
11. Only use attachments/accessories specified by the manufacturer.
12.  Use only with a cart, stand, tripod, bracket, or table specified by the manufacturer, or sold with the apparatus. When a cart is used, use caution when moving the cart/apparatus combination to avoid injury from tip-over.
13. Unplug this apparatus during lightning storms or when unused for long periods of time.
14. Refer all servicing to qualified service personnel. Servicing is required when the apparatus has been damaged in any way, such as power-supply cord or plug is damaged, liquid has been spilled or objects have fallen into apparatus, the apparatus has been exposed to rain or moisture, does not operate normally, or has been dropped.
15. This product may contain lead or mercury. Disposal of these materials may be regulated due to environmental considerations. For disposal or recycling information, please contact your local authorities or the Electronic Industries Alliance: [www.eiae.org](http://www.eiae.org).
16. **Damage Requiring Service** - The appliance should be serviced by qualified service personnel when:
  - A. The power supply cord or the plug has been damaged; or
  - B. Objects have fallen, or liquid has been spilled into the appliance; or
  - C. The appliance has been exposed to rain; or
  - D. The appliance does not appear to operate normally or exhibits a marked change in performance; or
  - E. The appliance has been dropped, or the enclosure damaged.
17. **Tilt/Stability** - All televisions must comply with recommended international global safety standards for tilt and stability properties of its cabinets design.
  - Do not compromise these design standards by applying excessive pull force to the front, or top, of the cabinet which could ultimately overturn the product.
  - Also, do not endanger yourself, or children, by placing electronic equipment/toys on the top of the cabinet. Such items could unsuspectingly fall from the top of the set and cause product damage and/or personal injury.
18. **Wall or Ceiling Mounting** - The appliance should be mounted to a wall or ceiling only as recommended by the manufacturer.
19. **Power Lines** - An outdoor antenna should be located away from power lines.
20. **Outdoor Antenna Grounding** - If an outside antenna is connected to the receiver, be sure the antenna system is grounded so as to provide some protection against voltage surges and built up static charges. Section 810 of the National Electric Code, ANSI/NFPA No. 70-1984, provides information with respect to proper grounding of the mats and supporting structure grounding of the lead-in wire to an antenna-discharge unit, size of grounding connectors, location of antenna-discharge unit, connection to grounding electrodes and requirements for the grounding electrode. See Figure below.
21. **Objects and Liquid Entry** - Care should be taken so that objects do not fall and liquids are not spilled into the enclosure through openings.
  - a) Warning: To reduce the risk of fire or electric shock, this apparatus should not be exposed to rain or moisture and objects filled with liquids, such as vases should not be placed on this apparatus.
22. **Battery Usage CAUTION** - To prevent battery leakage that may result in bodily injury, property damage, or damage to the unit:
  - Install all batteries correctly, with + and - alignment as marked on the unit.
  - Do not mix batteries (old and new or carbon and alkaline, etc.)
  - Remove batteries when the unit is not used for a long time.

### EXAMPLE OF ANTENNA GROUNDING AS PER NATIONAL ELECTRICAL CODE (NEC)



**Note to the CATV system installer:** this reminder is provided to call the CATV system installer's attention to Article 820-40 of the NEC that provides guidelines for proper grounding and, in particular, specifies that the cable ground shall be connected to the grounding system of the building, as close to the point of cable entry as practical.

# 1 Notice

Specifications are subject to change without notice. Trademarks are the property of Koninklijke Philips Electronics N.V. or their respective owners. P&F USA reserves the right to change products at any time without being obliged to adjust earlier supplies accordingly.

The material in this manual is believed adequate for the intended use of the system. If the product, or its individual modules or procedures, are used for purposes other than those specified herein, confirmation of their validity and suitability must be obtained. P&F USA warrants that the material itself does not infringe any United States patents. No further warranty is expressed or implied.

P&F USA cannot be held responsible neither for any errors in the content of this document nor for any problems as a result of the content in this document. Errors reported to P&F USA will be adapted and published on the P&F USA support website as soon as possible.

## Pixel characteristics

This LCD product has a high number of color pixels. Although it has effective pixels of 99.999% or more, black dots or bright points of light (red, green or blue) may appear constantly on the screen. This is a structural property of the display (within common industry standards) and is not a malfunction.

## Warranty

No components are user serviceable. Do not open or remove covers to the inside of the product. Repairs may only be done by Service Centers and official repair shops. Failure to do so shall void any warranty, stated or implied.

Any operation expressly prohibited in this manual, any adjustments, or assembly procedures not recommended or authorized in this manual shall void the warranty.

## Federal Communications Commission Notice

This equipment has been tested and found to comply with the limits for a Class B digital device, pursuant to part 15 of the FCC Rules. These limits are designed to provide reasonable protection against harmful interference in a residential installation. This equipment generates, uses, and can radiate radio frequency energy and, if not installed and used in accordance with the instructions, may cause harmful interference to radio communications. However, there is no guarantee that interference will not occur in a particular installation. If this equipment does cause harmful interference to radio or television reception, which can be determined by turning the equipment off and on, the user is encouraged to try to correct the interference by one or more of the following measures:

- Reorient or relocate the receiving antenna.
- Increase the separation between the equipment and the receiver.
- Connect the equipment into an outlet on a circuit different from that to which the receiver is connected.
- Consult the dealer or an experienced radio or television technician for help.

## Declaration of Conformity

**Trade Name:** PHILIPS  
**Responsible Party:** P&F USA, Inc.  
**Model:** 32PFL3506  
**Address:** PO Box 430 Daleville, IN  
 47334-0430 U.S.A.  
**Telephone Number:** 1-866-309-0841

## Modifications

The FCC requires the user to be notified that any changes or modifications made to this device that are not expressly approved by Philips Consumer Electronics may void the user's authority to operate the equipment.

## Cables

Connections to this device must be made with shielded cables with metallic RFI/EMI connector hoods to maintain compliance with FCC Rules and Regulations.

## Canadian notice

Standard Television Receiving Apparatus, Canada BETS-7/NTMR-7.

This Class B digital apparatus meets all requirements of the Canadian Interference-Causing Equipment Regulations.

## Copyright

All other registered and unregistered trademarks are the property of their respective owners.



HDMI, the HDMI Logo, and High-Definition Multimedia Interface are trademarks or registered trademarks of HDMI Licensing LLC in the United States and other countries.



Manufactured under license from Dolby Laboratories. Dolby and the double-D symbol are trademarks of Dolby Laboratories.



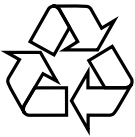
® Kensington and Micro Saver are registered US trademarks of ACCO World corporation with issued registrations and pending applications in other countries throughout the world.

Portions of this software are copyright © The FreeType Project ([www.freetype.org](http://www.freetype.org)).

The American Academy of Pediatrics discourages television viewing for children younger than two years of age.

## 2 Important

### Environmental care



The packaging of this product is intended to be recycled. Contact your local authorities for information about how to recycle the packaging.

For product recycling information, please visit - [www.recycle.philips.com](http://www.recycle.philips.com)

### End of life directives



This LCD TV contains a lamp with Mercury, please dispose of according to all local, state and federal laws.

Philips pays a lot of attention to produce environment-friendly products in green focal areas. Your new TV contains materials which can be recycled and reused. At the end of its life, specialized companies can dismantle the discarded TV to concentrate the reusable materials and to minimize the amount of materials to be disposed of. Please ensure you dispose of your old TV according to local regulations.

### Disposal of used batteries

The batteries supplied do not contain the heavy metals mercury and cadmium. Nevertheless, in many areas batteries may not be disposed of with your household waste. Please ensure you dispose of batteries according to local regulations.

### Regulatory notices

#### Warning

To reduce the risk of fire or electric shock, this apparatus should not be exposed to rain or moisture. Objects filled with liquids, such as vases, should not be placed on this apparatus.

#### Caution

To prevent electric shock, match the wide blade of the plug to the wide slot, fully inserted.

Do not place the unit on the furniture that is capable of being tilted by a child and an adult leaning, pulling, standing or climbing on it. A falling unit can cause serious injury or even death.

This apparatus should not be placed in a built-in installation such as a bookcase or rack unless proper ventilation is provided. Make sure to leave a space of 4 inches (10cm) or more around this apparatus.

## 3 Get started

### Positioning the TV

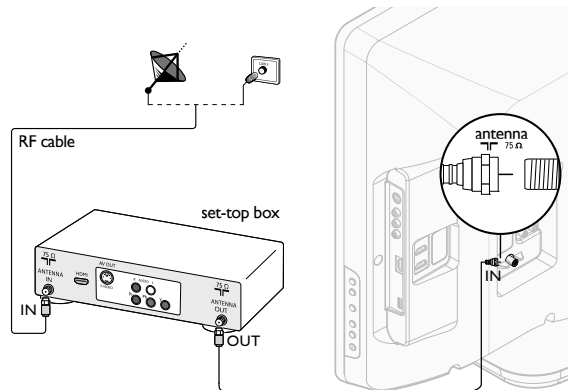
#### Warning

- Do not insert the AC power cord into the power socket outlet before all the connections are made.
- Large screen TVs are heavy, 2 people are required to carry and handle a large screen TV.
- Before you move the TV, disconnect attached cables to prevent damage to connectors.
- Ensure that you always have easy access to the AC power cord or plug to disconnect the TV from the power.

### Connecting the antenna or cable

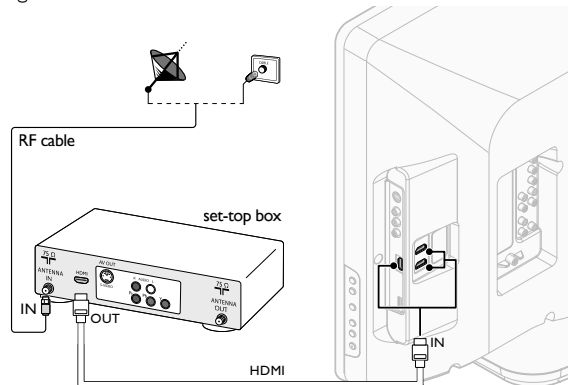
#### If you connect a set-top box through RF IN/OUT

If the TV is connected to a cable box or satellite set-top box via a coaxial connection, set the TV to channel 3 or 4, or to the channel specified by the service provider.

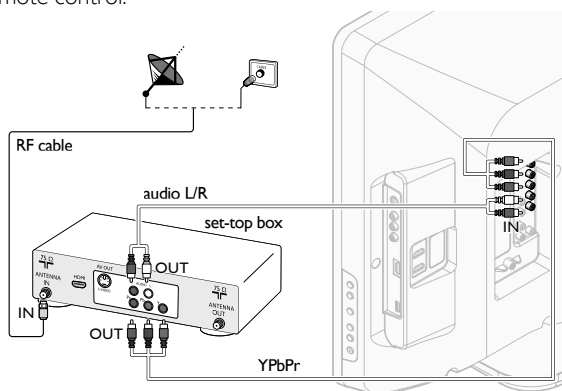


#### If you connect a set-top box through HDMI

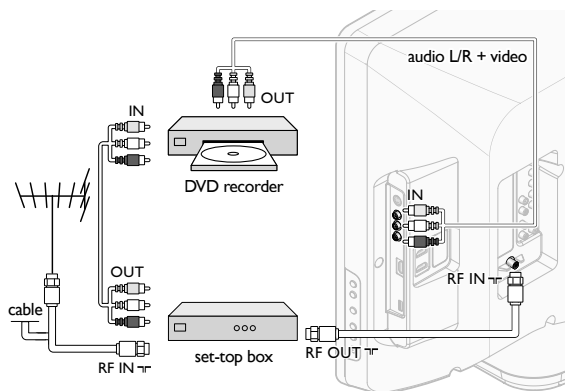
If the TV is connected to a cable box or satellite set-top box via HDMI, make sure you select the correct HDMI source by using **SOURCE** on this unit's remote control.



If you connect a set-top box through component video input  
If the TV is connected to a cable box or satellite set-top box via component video input, make sure you select the correct component video source by using **SOURCE** on this unit's remote control.



### Connecting a set-top box, DVD recorder via composite connectors and analog audio



Do not place your recorder too close to the screen because some recorders can be susceptible to signals.

#### Note

- Only the left loudspeaker reproduces sound for mono equipment. Use a mono to stereo adapter (not supplied) for sound reproduction via all internal loudspeakers.
- When you connect cables, match the cable colors to the connectors on the TV.

## 4 Use your TV

### Still mode

You can pause the image shown on the TV screen.

Press **FREEZE** to pause the image shown on the TV screen.



- The sound output will not be paused.
- If no signal is detected or protected signal is received during still mode, the image remains paused and the sound output will be muted.
- The still function will be released after 5 minutes.

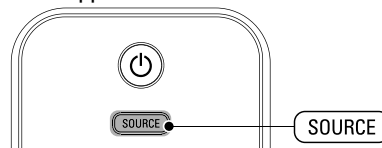
To cancel still mode, press any button except **⏻ (standby-On)**.

### Watching channels from a set-top box

To watch channels from a set-top box

- 1 Switch on the set-top box.
  - ↳ The picture from your set-top box might appear automatically on the TV screen.
- 2 Use the remote control of your set-top box to select channels.

If the picture does not appear



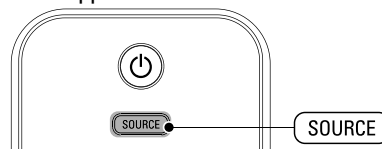
- 1 Press **SOURCE** repeatedly to select the set-top box and wait a few seconds for the picture to appear.
- 2 Use the remote control of your set-top box to select channels.

### Watching connected devices

To watch connected devices

- 1 Switch on the connected device.
  - ↳ The picture from your connected device might appear automatically on the TV screen.
- 2 Use the remote control of the device to select channels.

If the picture does not appear



- 1 Press **SOURCE** repeatedly to select the connected device and wait a few seconds for the picture to appear.
- 2 Use the remote control of the device to select channels.

#### Automatic Power Shut Off

If there is no input signal and no operation for 15 minutes, the unit will turn off automatically.

## Switching audio mode

This section describes how to switch audio language in digital mode and how to switch audio in analog mode.

### DTV

- 1 Press **SAP** to display the currently selected language and the number of available languages.



- 2 Press **SAP** repeatedly to cycle through the available audio languages.
  - Available languages differ depending on the broadcast. **[Other]** is displayed when the audio language cannot be acquired, or the acquired languages are other than English, Spanish or French.

### Note

- **SAP** does not control external audio devices.
- The information display will automatically disappear in a few seconds.

### TV

Press **SAP** to display the currently selected audio mode. While receiving an MTS broadcast, press repeatedly to cycle through the available audio channel.



When all audio are available



When stereo and monaural audio are available



When SAP and monaural audio are available



When only monaural audio is available



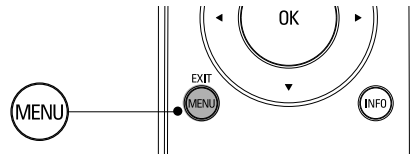
- STEREO** : Outputs stereo-audio  
**SAP** : Outputs second audio program  
**MONO** : Outputs mono-audio

## 5 Use more of your TV

### Changing picture and sound settings

You must set **[Home]** in **[Location]** (refer to page 11). Otherwise, personalized picture and sound settings will not be memorized after the unit goes to standby mode.

### Changing picture settings



- 1 Press **MENU** on the remote control.
- 2 Press **OK** to enter the **[Picture]**.

PHILIPS		
Picture	Settings assistant	
Sound	Auto Picture	Personal
Setup	Brightness	30
Features	Contrast	60
Language	Color	36
USB	Tint	0
	Sharpness	0
	Color Temperature	Normal
	Noise Reduction	On

- 3 Press **▲** or **▼** to select one of the picture settings, and press **OK** to enter the setting.
- 4 Adjust the picture quality. **[Auto Picture]**  
 Press **▲** or **▼** to select the desired setting, then press **OK**. (**[Personal]**, **[Standard]**, **[Sports]**, **[Movie]** and **[Game]**)

**[Brightness]**, **[Contrast]**, **[Color]**, **[Tint]**, **[Sharpness]**, **[Color Temperature]**

Press **▲** or **▼** to select the desired setting, then Press **◀** or **▶** to adjust.

#### **[Noise Reduction]**

Reduces the noise of the picture.

Press **▲** or **▼** to select the desired option, then press **OK**.

<b>On</b>	Reduces noise in an image.
<b>Off</b>	Sets noise reduction to off.

### Note

- This function is disabled when PC input is selected. (Setting will be in gray)

- 5 Press **MENU** to exit.

### Note

- To cancel picture adjustment, press **MENU**.



## Summary of picture settings

The following picture settings can be configured. Depending on the format of the picture source, some picture settings are not available.

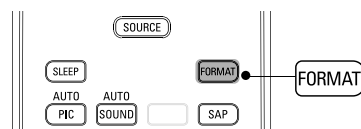
- **[Auto Picture]:** Sets all picture settings to the factory default.
- **[Brightness]:** Adjusts the intensity and details of dark areas.
- **[Contrast]:** Adjusts the intensity of bright areas, keeping dark areas unchanged.
- **[Color]:** Adjusts color saturation.
- **[Tint]:** Adjusts the color balance in an image.
- **[Sharpness]:** Adjusts the level of sharpness in image details.
- **[Color Temperature]:** To set the color temperature to **[Normal]**, **[Warm]** or **[Cool]**.

## Changing auto picture mode

- 1 Press **AUTO PIC** to set your TV to a predefined picture setting.
- 2 Press **▲** or **▼** to select one of the following settings:
  - **[Personal]:** The customized settings you defined by using the **[Picture]** menu.
  - **[Standard]:** For normal TV viewing.
  - **[Sports]:** Vivid picture settings for high action.
  - **[Movie]:** Brilliant picture settings for a cinematic experience.
  - **[Game]:** Optimized for PCs, games consoles and playstations.

## Changing picture format

- 1 Press **FORMAT** on the remote control.

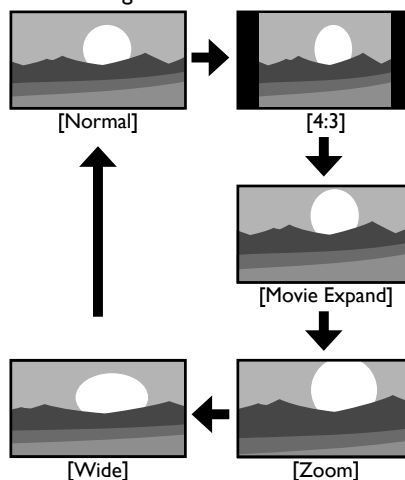


- 2 Press **▲** or **▼** to select a picture format and press **OK** to confirm your choice.

## Summary of picture formats

Display modes can be selected when the broadcasting station is sending 16:9 or 4:3 video signal. And 3 types of display modes can be selected for PC input signal.

### For 16:9 video signal



### Normal

Display a 16:9 picture at its original size.

### 4:3

Display a 16:9 picture at a 4:3 size; the picture is shortened horizontally. Sidebars appear on both edges of the screen.

### Movie Expand

Display a 16:9 picture that is vertically stretched to fill the screen. This only crops out the top of the picture.

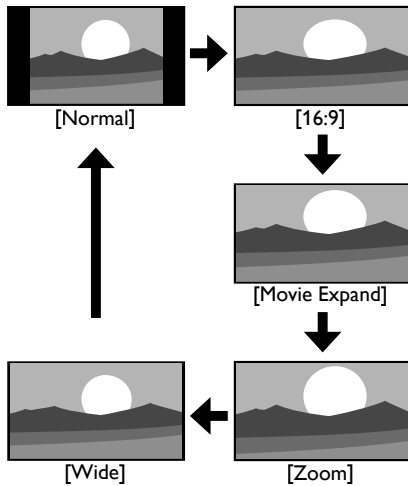
### Zoom

Display a 16:9 picture at its maximum size without changing its horizontal and vertical ratio.

### Wide

Display a horizontally stretched picture. This crops out the left and right sides of the picture.

For 4:3 video signal



#### Normal

Display a 4:3 picture at its original size. Sidebars appear on both edges of the screen.

#### 16:9

Display a 4:3 picture at a 16:9 size; the picture is stretched horizontally to fill the screen.

#### Movie Expand

Display a 4:3 picture at a 16:9 size; the picture is stretched more vertically at the top of the screen. This crops out the top of the picture.

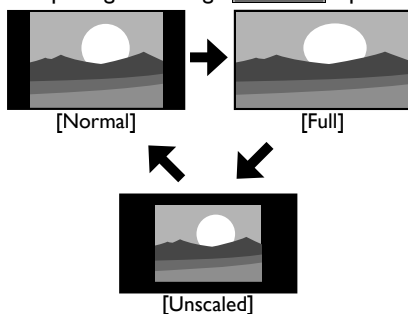
#### Zoom

Display a 4:3 picture at a 16:9 size; at its maximum size that is more vertically stretched to fill the screen. This crops out the top and bottom of the picture.

#### Wide

Display the picture with its center at the original size and the edges stretched horizontally to fill the screen.

For PC input signal through **HDMI1** input mode



#### Normal

Display a proportionately stretched picture. Sidebars appear on both edges of the screen.

#### Full

Display a picture that is stretched out of proportion to fill the screen.

#### Unscaled

Display a picture in its original size.

## Closed caption

Closed captioning is an assistive technology that allows persons with hearing disabilities to access television programming. Closed captioning displays the audio portion of programming as text superimposed over the video.

### Note

- Closed captioning service may not be controlled by this unit's menu options if you are watching television through an external cable or satellite set top box. In which case you will need to use the menu options on the external set top box to control Closed Captioning.
- The captions do not always use correct spelling and grammar: Not all TV programs and product commercials include closed caption information. Refer to your area TV program listings for the TV channels and times of closed caption shows. The captioned programs are usually noted in the TV listings with service marks such as [CC].
- The EUT setting that satisfies § 79.102 (e) is as follows:  
Font: Mono-font  
Character size: Large

### DTV

## Selecting DTV caption services

- 1 Select a caption service for digital channels:
  - Press **MENU** on the remote control and select **[Features] > [Closed Caption] > [Digital Caption Service]**.
  - Press **▲** or **▼** to select one of the listed caption services, and press **OK** to confirm your choice.

<b>Off</b>	Select if you do not want Digital Caption Service. This is the default.
<b>CS-1 to CS-6</b>	Select one of these before changing any other item in <b>[Closed Caption]</b> menu. Choose <b>[CS-1]</b> under normal circumstances.

- 2 Press **MENU** to exit.

## Selecting how captions are displayed

You can choose the size, font, color, background and other characteristics of the caption text.

- 1 Press **MENU** on the remote control and select **[Features] > [Closed Caption] > [Caption Style] > [User Setting]**. Press **▲** or **▼** to select **[On]**, then press **OK**.
- 2 Press **▲** or **▼** to highlight an option for digital captions, and press **OK** to select the option.
- 3 Press **▲** or **▼** to highlight a setting for the option, and press **OK** to confirm your choice.
- 4 Press **MENU** to exit.

## Difficulties viewing closed captions on DTV programming

If you have difficulties viewing closed captions on DTV programming, including HDTV, received from your subscription television provider, you should:

- consult any consumer information and manuals/guides on closed captions for DTV programming provided by your subscription television provider;
- ensure that the captioning function on your set-top box, if applicable, is turned on; and,
- ensure that the captioning function on your DTV is turned on.

If you are still unable to view closed captions on DTV programming, you should contact your subscription television provider for assistance.

## Selecting caption services

- Select a caption service for analog channels:
  - Press **MENU** on the remote control and select **[Features] > [Closed Caption] > [Caption Service]**.
  - Press **▲** or **▼** to select one of the listed caption services, and press **OK** to confirm your choice.
- Press **MENU** to exit.

### Note

- Not all caption services are used by a TV channel during the transmission of a closed caption program.

## Summary of caption services

Service	Description
CC-1 and T-1;	are the primary caption and text services. The captioning or text is displayed in the same language as the program's dialogue (up to 4 lines of script on the TV screen, where it does not obstruct relevant parts of the picture).
CC-3 and T-3;	serve as the preferred data channels. The captioning or text is often a secondary language.
CC-2, CC-4, T-2 and T-4;	are rarely available and broadcasters use them only in special conditions, such as when [CC-1] and [CC-3] or [T-1] and [T-3] are not available. <ul style="list-style-type: none"> <li>There are 3 display modes according to programs:               <p><b>Paint-on mode:</b> Displays input characters on the TV screen immediately.</p> <p><b>Pop-on mode:</b> Once characters are stored in memory, they are displayed all at once.</p> <p><b>Roll-up mode:</b> Displays the characters continuously by scrolling (max. 4 lines).</p> </li> </ul>

## ECO

You can set whether the power consumption is saved or not.

- Press **MENU** on the remote control and select **[Features] > [ECO]**.

PHILIPS	
Picture	Closed Caption
Sound	Child Lock
Setup	ECO <input type="checkbox"/> On
Features	EasyLink
Language	Location Home
USB	Current Software Info

- Press **▲** or **▼** to select the desired mode, then press **OK**.

<b>On</b>	Select if you want to reduce power consumption.
<b>Off</b>	Sets the backlight brighter.

- Press **MENU** to exit.

## Set your location to home

You can set the location of your TV to **[Home]** or **[Retail]**. Choosing **[Home]** gives you full flexibility to change predefined settings for picture and sound.

- Press **MENU** on the remote control and select **[Features] > [Location]**.
- Select **[Home]** and press **OK** to confirm your choice.
- Press **MENU** to exit.

### Note

- You must set **[Home]**. Otherwise, personalized picture and sound settings will not be memorized after the unit goes to standby mode.

## Viewing photos and watching videos on a USB storage device

Your TV is fitted with a USB connection that enables you to view photos or watch Motion JPEG files stored on a USB storage device.

Supported formats	Not-supported formats
JPEG	Progressive JPEG files
FAT/DOS-formatted memory devices	File names containing a dot character

It is recommended that files to be played back in this unit are recorded under the following specifications:

- <JPEG>
- Upper limit : 24Mpixel
- <Motion JPEG>
- Size : 320×240 (QVGA)
  - Frame rate : 30fps
  - Audio type : LPCM - Sampling frequency (32 kHz, 44.1 kHz or 48 kHz) - Quantization bit rate (16 bit)

### Note

- Philips can not be held responsible if your USB storage device is not supported, nor will Philips accept any liability for damage or loss of stored data.
- The USB storage device is not supplied with the TV.
- Motion JPEG file with an extension of ".avi" can only be recognized. An extension of ".mov" is not supported.
- This unit doesn't support "pause", "forward" or "reverse" during video (Motion JPEG) playback.

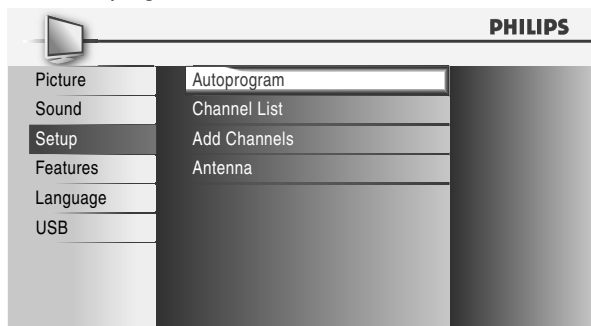
## 6 Install channels

## 7 Troubleshooting

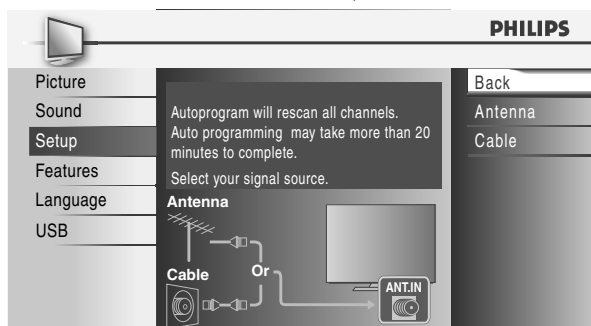
### Autoprogram

Before you install channels, ensure that you are registered with your cable TV provider and that your equipment is correctly connected.

- 1 Press **MENU** on the remote control and select **[Setup] > [Autoprogram]**.



- 2 Press **OK** to start the installation.  
If you run **[Autoprogram]** when you have locked channels, a message appears asking to enter your PIN. Enter your PIN in order to complete the installation.
- 3 Select **[Antenna]** or **[Cable]** and press **OK**.
  - When **[Antenna]** is selected, the TV detects antenna signals. It searches for NTSC and ATSC channels available in your area.
  - When **[Cable]** is selected, the TV detects signals supplied by cable. It searches for NTSC, ATSC, and Cable channels available in your area.



- 4 Follow the on-screen instructions to complete the installation.

### Downloading an electronic copy

To obtain a more detailed electronic copy of this manual:

- 1 Point your browser to [www.philips.com/support](http://www.philips.com/support)
- 2 Choose your country of location.
- 3 Enter the model number or a keyword in the "Find your product" field. Alternatively, you can browse the catalog.
- 4 Click the description or model.
- 5 Under Product support, click "User manuals".

### Contact us

If you cannot resolve your problem, refer to the FAQ for this TV at [www.philips.com/support](http://www.philips.com/support)

If the problem remains unresolved, contact the Customer Support Center in your country.



#### Warning

- Do not attempt to repair the TV yourself. This may cause severe injury, irreparable damage to your TV or void your warranty.



#### Note

- Please have available your TV model and serial number before contacting us. These numbers are available on the back and side of your TV, as well as on the packaging.

# 8 Specifications

## Note

- Specifications are subject to change without prior notice.

### Picture enhancement

Type:	WXGA (1366 x 768 pixels 60Hz)
Aspect ratio:	16:9
Viewing angles:	170° (V) by 170° (H)
Built-in digital tuner:	ATSC

### Sound enhancement

Mono/Stereo:	Mono, Stereo, Virtual Surround Sound
Power output (RMS watts):	20 W
Equalizer:	5 band

### Ease of use

Video modes:	For 16:9 video signal/Normal, 4:3, Movie Expand, Zoom, Wide For 4:3 video signal/Normal, 16:9, Movie Expand, Zoom, Wide For PC input signal/Normal, Full, Unscaled
PC input:	via HDMI
Photo slide show:	Yes (jpeg files only)
Video playback:	Yes (Motion JPEG 320x240, 30fps only)

### Connections

Component video input with audio L/R:	1, supporting video signals/480i/p, 720p, 1080i, 1080p 60Hz
Composite video input with audio L/R and S-Video:	1
HDMI:	3 HDMI supporting video signals/480i/p, 720p, 1080i, 1080p 24Hz-60Hz For HDMI1/PC-input signal up to WXGA
Audio L/R integrated with HDMI 1:	1
Digital audio output :	1, supporting Dolby Digital
Analog audio output :	1
USB:	1 (on the side of TV)

### Power

Power requirements:	120V~ AC +/- 10%, 60Hz +/- 0.5%
---------------------	---------------------------------

# 9 Warranty

## LIMITED WARRANTY ONE (1) YEAR

### WARRANTY COVERAGE:

This warranty obligation is limited to the terms as set forth below.

### WHO IS COVERED:

This product warranty is issued to the original purchaser or the person receiving the product as a gift against defects in materials and workmanship as based on the date of original purchase ("Warranty Period") from an Authorized Dealer. The original sales receipt showing the product name and the purchase date from an authorized retailer is considered such proof.

### WHAT IS COVERED:

This warranty covers new products if a defect in material or workmanship occurs and a valid claim is received within the Warranty Period. At its option, the company will either (1) repair the product at no charge, using new or refurbished replacement parts, or (2) exchange the product with a product that is new or which has been manufactured from new, or serviceable used parts and is at least functionally equivalent or most comparable to the original product in current inventory, or (3) refund the original purchase price of the product. Replacement products or parts provided under this warranty are covered against defects in materials and workmanship from the date of the replacement or repair for ninety (90) days or for the remaining portion of the original product's warranty, whichever provides longer coverage for you. When a product or part is exchanged, any replacement item becomes your property and the replaced item becomes company property. When a refund is given, your product becomes company property.

Note: Any product sold and identified as refurbished or renewed carries a ninety (90) day limited warranty.

Replacement product can only be sent if all warranty requirements are met. Failure to follow all requirements can result in delay.

### WHAT IS NOT COVERED - EXCLUSIONS AND LIMITATIONS:

This Limited Warranty applies only to new company manufactured products that can be identified by the trademark, trade name, or logo affixed to it. This Limited Warranty does not apply to any hardware product or any software, even if packaged or sold with the product, as manufacturers, suppliers, or publishers may provide a separate warranty for their own products packaged with the bundled product.

The company is not liable for any damage to or loss of any programs, data, or other information stored on any media contained within the product, or other additional product or part not covered by this warranty. Recovery or reinstallation of programs, data or other information is not covered under this Limited Warranty.

This warranty does not apply (a) to damage caused by accident, abuse, misuse, neglect, misapplication, or non-supplied product, (b) to damage caused by service performed by anyone other than company approved Authorized Service Location, (c) to a product

or a part that has been modified without written company permission, or (d) if any serial number has been removed or defaced, or (e) product, accessories or consumables sold "AS IS" without warranty of any kind by including refurbished product sold "AS IS" by some retailers.

This Limited Warranty does not cover:

- Shipping charges to return defective product.
- Labor charges for installation or setup of the product, adjustment of customer controls on the product, and installation or repair of antenna/signal source systems outside of the product.
- Product repair and/or part replacement because of improper installation or maintenance, connections to improper voltage supply, power line surge, lightning damage, retained images or screen markings resulting from viewing fixed stationary content for extended periods, product cosmetic appearance items due to normal wear and tear, unauthorized repair or other cause not within the control of the company.
- Damage or claims for products not being available for use, or for lost data or lost software.
- Damage from mishandled shipments or transit accidents when returning product.
- A product that requires modification or adaptation to enable it to operate in any country other than the country for which it was designed, manufactured, approved and/or authorized, or repair of products damaged by these modifications.
- A product used for commercial or institutional purposes (including but not limited to rental purposes).
- Product lost in shipment and no signature verification receipt can be provided.
- Failure to operate per Owner's Manual.

### TO OBTAIN ASSISTANCE...

Contact the Customer Care Center at:  
1-866-309-0841

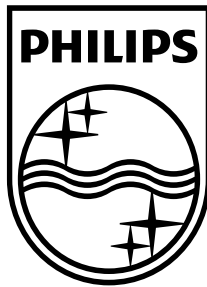
REPAIR OR REPLACEMENT AS PROVIDED UNDER THIS WARRANTY IS THE EXCLUSIVE REMEDY FOR THE CONSUMER, WITH THE ISSUING COMPANY NOT LIABLE FOR ANY INCIDENTAL OR CONSEQUENTIAL DAMAGES FOR BREACH OF ANY EXPRESS OR IMPLIED WARRANTY ON THIS PRODUCT. EXCEPT TO THE EXTENT PROHIBITED BY APPLICABLE LAW, ANY IMPLIED WARRANTY OF MERCHANTABILITY OR FITNESS FOR A PARTICULAR PURPOSE ON THIS PRODUCT IS LIMITED IN DURATION TO THE DURATION OF THIS WARRANTY.

Some states do not allow the exclusions or limitation of incidental or consequential damages, or allow limitations on how long an implied warranty lasts, so the above limitations or exclusions may not apply to you.

*This warranty gives you specific legal rights. You may have other rights which vary from state/province to state/province.*

**P&F USA, Inc. PO Box 430 Daleville, IN 47334-0430**

061708



**P&F USA, Inc.**  
**PO Box 430 Daleville, IN 47334-0430**

**P&F Mexicana, S.A. de C.V.**  
**Av. La Palma No. 6, Col. San Fernando La Herradura.**  
**Huixquilucan, Edo. de México. C.P. 52787**

**TELEVISOR A COLOR DE CRISTAL LIQUIDO (LCD)**

MODELO	LCD	IMAGEN VISIBLE	ENERGIA
32PFL3506/F7	32"(81,28cm)	80,00cm	120V ~ 60Hz 130W

**Comercializado por :** P&F MEXICANA, S.A. DE C.V.

**IMPORTADOR :** P&F MEXICANA, S.A. DE C.V.  
Av. La Palma No. 6, Col. San Fernando La Herradura. Huixquilucan,  
Edo. de México. C.P.52787 Tel: 52 55 52 69 9000

**PAIS DE ORIGEN :** CHINA

**GARANTIA INCLUIDA EN EL INSTRUCTIVO DE USO**



**LEA CUIDADOSAMENTE ESTE INSTRUCTIVO  
ANTES DE USAR SU APARATO.**

Philips and Philips Shield are used under license  
of Koninklijke Philips Electronics N.V.

Printed in China  
A17FHUH/A17FGUH  
1EMN28819C ★★

