



**DIGITAL HDD AUDIO PLAYER
USER MANUAL
MANUEL D UTILISATION**



**JK 20-S
JUKE BOX MP3 TUNER FM**



DISCLAIMER

The information in this document is subject to change without notice. The manufacturer makes no representations or warranties with respect to the contents hereof and specifically disclaim any implied warranties of merchantability or fitness for any particular purpose. The manufacturer reserves the right to revise this publication and to make changes from time to time in the content hereof without obligation of the manufacturer to notify any person of such revision or changes.

COPYRIGHT

This publication, including all photographs, illustrations and software, is protected under international copyright laws, with all rights reserved. Neither this manual, nor any of the material contained herein, may be reproduced without written consent of the author.

© H&B Copyright July, 2003

IMPORTANT SAFETY INFORMATION

Read this manual carefully before using the device.

- DO NOT alter this device in any way. It may cause fire, injury, electric shock, or serious damage to this device or to the user.
- Keep this device away from water. Water may cause fire, electric shock, or mechanical or electrical breakdown.
- DO NOT leave this device in a car or other places where there is the possibility of high temperature. Keep it away from the direct rays of the sun or drastic temperature changes. Being exposed to high temperature may be harmful to the components in this device or possibly cause fire.
- Use only the recommended battery charger. Other chargers may cause fire or product malfunction.
- Avoid using this device in high temperature or high humidity locations. It may cause serious damage to the device.
- Avoid dropping it from high places. It may cause malfunction or serious damage to the device.
- DO NOT use any accessories other than the ones recommended by the manufacturer. The manufacturer IS NOT responsible for any malfunction or breakdown caused by the use of accessories.
- DO NOT clean this device with alcohol or volatile detergent. It may cause fading of device surfaces.
- DO NOT disassemble this device. In case of problems, contact the After Service (A/S) centre.

INTRODUCTION

WHAT IS MP3/WMA FORMAT?

MP3 / WMA format files are compressed digital audio files, which consumers can listen to with near CD quality

Commercial CD audio files can be compressed to MP3 / WMA format files, which are suitable for internet transmission due to their compact size and can be stored in a portable audio device. The users, for example, can record their own favorite music album, storing it in HDD in a digital audio player.

WHAT IS THIS DIGITAL JUKEBOX PLAYER?

This Digital Jukebox Player is a portable device, which can be used for MP3 music files playback and MP3 files record/playback, and it additionally can be used as a drive while connected to PC.

You can enjoy CD quality music with the mass storage capacity device, in which you can store up to 5000 songs, because the digital music files accessed by this Digital Jukebox player are stored in 2.5" HDD.

Furthermore, it can be recognized as portable removable drives when connected to PC or notebook by the USB interface cable.

PACKING LIST

Please check the following items that can be found in this package.

- Digital Jukebox Player
- Earphone
- USB cable; A to Mini USB type
- AC/DC Adapter
- Carry Case
- User Manual
- Driver installation CD incl. MUSICMATCH Software

WARNINGS

1. Under Copyright laws the user is liable to obtain the license, before playing or recording copyright protected music, except for **personal use**. That is, if you make **one recording only** for playing to yourself, or for personal use at home. **This applies to music files on Web pages too!**
2. The moment you give only one copy to someone else, you are distributing or duplicating the music and it is no longer for your personal use, you must obtain a license to do this first.

PRECAUTIONS

The supplier holds no liability for any claims if the product ceases to function correctly due to misuse, because it has been dropped, subjected to violent vibration, extremes of temperature or if any attempt has been made to open the case, apart from the battery cover, to replace batteries.

1. Normal vibration will not affect the operation of the Digital Jukebox player. However, dropping or shocking may cause damage to the product.
2. The product is not designed for water-resistant usage. Drenching the product may cause damage.
3. Do not clean up the product with chemicals such as thinners, benzene and alcohol that may deface the surface.
4. Avoid placing the Digital Jukebox player in places of high humidity or close to a heat source.
5. Unintentional electrostatic discharge may shut down or damage the product. You may need to remove then replace the batteries to reset it.

INSTALLING SOFTWARE

MINIMUM SYSTEM REQUIREMENTS

- Windows 98SE / ME / 2000 / XP.
- Pentium 200 MHz or above.
- Disk Drive 16MB free hard disk space (to download and upload files from the player).
- 32MB system memory
- USB port (A-Type).

NOTE:

- **This specification is for the download driver software supplied with this player only. An increased PC specification is likely to be required for application software for music file creation.**
- **It is highly recommended that charge the battery first before you power on the Digital Jukebox player.**

INSTALLING THE DRIVER SOFTWARE

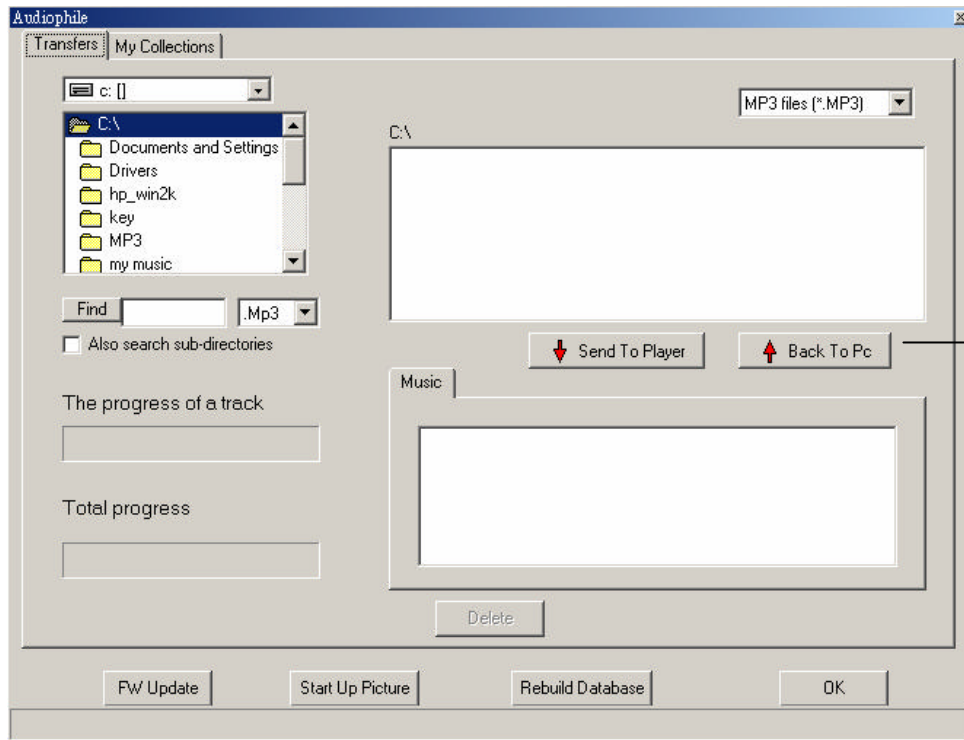
Under **Win98** OS, if you plug the Digital Jukebox player into the USB port on your PC, the windows will automatically detect it as a new hardware and pop out a "New Hardware Found" message. After the above step, the "Add Device Driver Wizard" will show up automatically. Click the "next" button to follow the on screen instructions to finish the installation process.

1. Click the "search for a suitable driver for my device (recommend)" item and then click the "next" button to continue.
2. In this dialog box, the wizard will ask you to check the optional search location. Please insert the installation CD to CD ROM drive firstly, check the "specify a location" item, press the "browse" button to specify the driver location selected as the following path: **Audio/HDD Jukebox/Driver** and click "OK" button to complete the whole installation.
3. Click My Computer icon at desktop, you will find one "Jukebox" drive in the My Computer window.

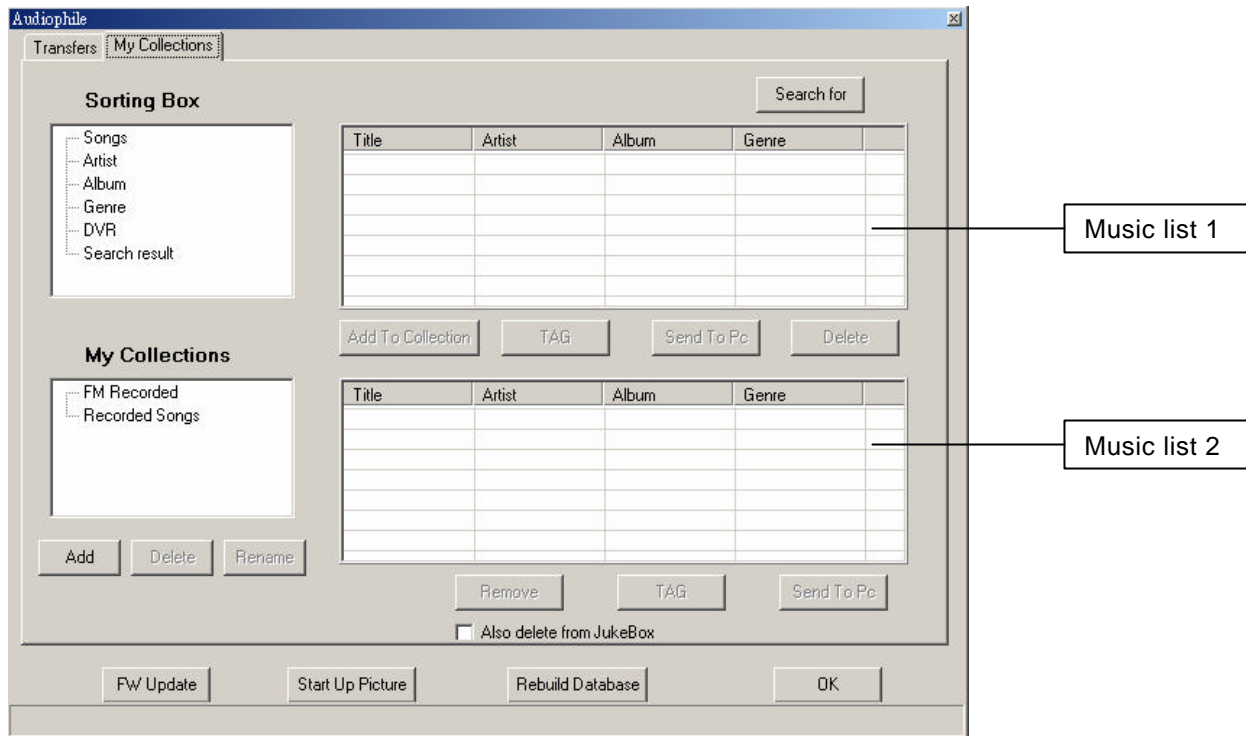
INSTALLING THE MUSIC MANAGEMENT SOFTWARE, *AudioPhile.exe*.

Now it's time to introduce our sophisticated *AudioPhile.exe*, music management software between the computer operating system and the Digital JukeBox player. This section will describe PC System Requirements, installation method and detailed introduction on *AudioPhile.exe* by steps as follows:

1. PC System Requirements
 - Microsoft Windows 98, Me, 2000 or XP
 - Pentium II with 32MB RAM and 64 MB RAM (Recommended)
 - USB port
 - CD-ROM drive
 - Internet connection recommended
 - 32MB free hard drive space
2. Installation method
 - Insert the installation CD into your PC's CD-ROM drive and go into the windows explorer.
 - Click the icon of CD-ROM drive, follow the path: **driver CD\Audio\HDD Jukebox\AP\AudioPhile.exe** and then just drag and drop the *Audio Phile.exe* to anywhere you want it to be stored on your desktop.
3. Executing the *AudioPhile.exe*
 - Make sure the supplied USB cable has been connected right between the PC and MP3 player.
 - Double-click audiophile.exe icon to start the following music management functions and firstly you will see the window shown below.



- On the "transfer" tab, you can do the following features described below by function-oriented items:
 1. To download files to your MP3 player
 - Go click the specified folder and then the file name(s) saved in the folder will show up soon in the file list on PC.
 - Select the desired MP3 file(s) shown in the file list on PC and then click the "Send to player" button to download to the MP3 player. Meanwhile the progress bar will dynamically show the status of the progress.
 2. To upload files to your PC system
 - Select the desired MP3 file(s) stored in the "music" tab, the file list on MP3 player, and then click the "Back to PC" button to upload to the PC system. Meanwhile the progress bar will dynamically show the status of the progress.
- On the "My Collection" tab, you can easily manage or reorganize your music files. The related descriptions are as follows:

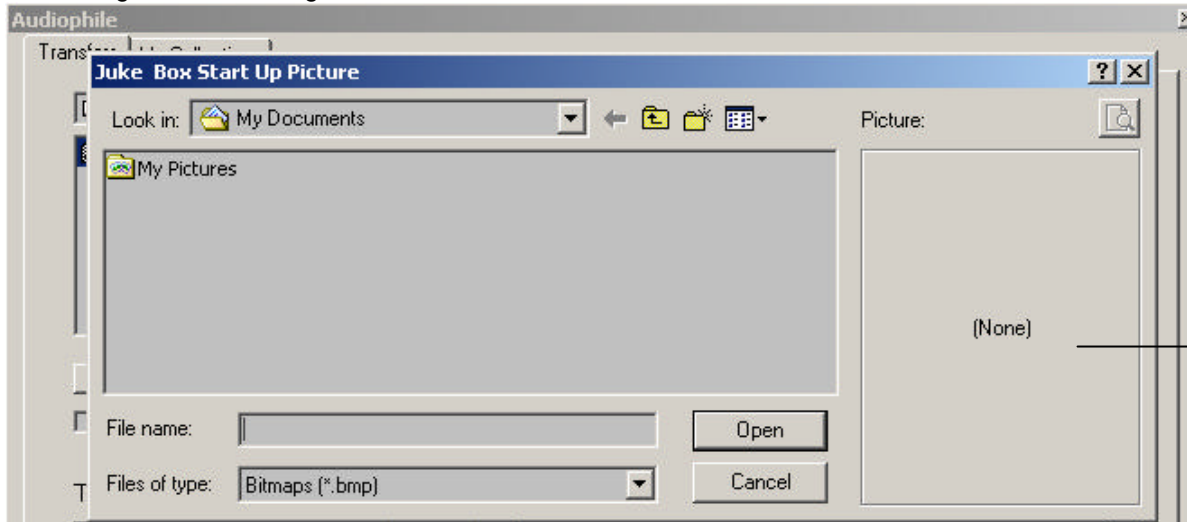


1. Choose these items shown on the “Sorting Box”
 - Click the “TAG” button to edit the ID3 Tag information, including title, album, artist and genre for the selected song.
 - Click the “Delete” button to dismiss the specified song. Be careful. Deleting in the sorting box will also delete the music file on the user’s JukeBox.
 - Click the “Add to Collection” button to add your favorite song to your appointed folder listed on the “My Collection” box.
2. Choose the item shown on the “My Collections” box
 - Click the “TAG” button to edit the ID3 Tag information, including the title, album, artist, and genre for the selected song.
 - Click the “Remove” button to delete the selected song from the music list 2, next to my collection box.
 - Click the “Add” ,”Delete” or “Rename” button to change the original setting.
3. Click the “search for” button to fill in title, artist or album to search and then the desired songs will be shown in the music list 1, next to sorting box.

Note: you also can use “Conditional search” to search. That is, Selecting“*” as the character can replace any other ones while searching.

- To change the start up picture

1. If you would love to change the start up picture shown on the MP3 player's LCD screen, click the "start up picture" button to get further setting as shown below.



- Choose the folder in which your favorite pictures are stored and then select a picture you want. At the same time, you can preview the picture demonstrated on the right box. **Please note you just can select the bmp file with monochrome and the dimension of 160(W)X 240mm(L).**
- Just click on the "OPEN" button to finish the whole setting.

- To upgrade the firmware

- It's easy for you to get the firmware on the dealer's web site.
- Save the updated firmware to your PC.
- Be sure your MP3 player is well connected to the PC with a supplied USB cable.
- Operate the audiophile.exe and then click the "F/W update" button.
- Look up the folder in which your firmware upgrade file is located, select and open the specified file.
- If the firmware update is complete, drop the USB cable out and reboot your MP3 player.
- The progress bar of firmware upgrade will show up, and then show the progress status of firmware upgrade.
- The player will automatically power off while the firmware upgrade is finished.
- Restart the player to enjoy your music.

- To rebuild the database

While selecting song(s) to play, if the system of the Jukebox always shows "file missing" message, please use the "rebuild the database" function. However, please note that after performing this function, all music file(s) in "my collections" box will disappear. If not necessary, we don't suggest you to do this function often.

Note:

If the song is downloaded through Audiophile, it must be deleted from Audiophile.

USE AS PC DRIVE

If you wish to use the JukeBox as an external Hard Disk Drive, please follow the below steps to finish.

1. Connect the JukeBox to your PC's or (Notebook's) USB port with the supplied USB cable.
 2. Click on the **My Computer** icon, you will find one new removable drive such as "E" or "F" drives.
- NB : Under win 98 operation system, if the new drive does not appear, please refer to page 1 to complete the installation procedure of driver.
3. Drag and drop the file(s) to / from the Jukebox using Windows.

MESSAGE WHILE CONNECTION

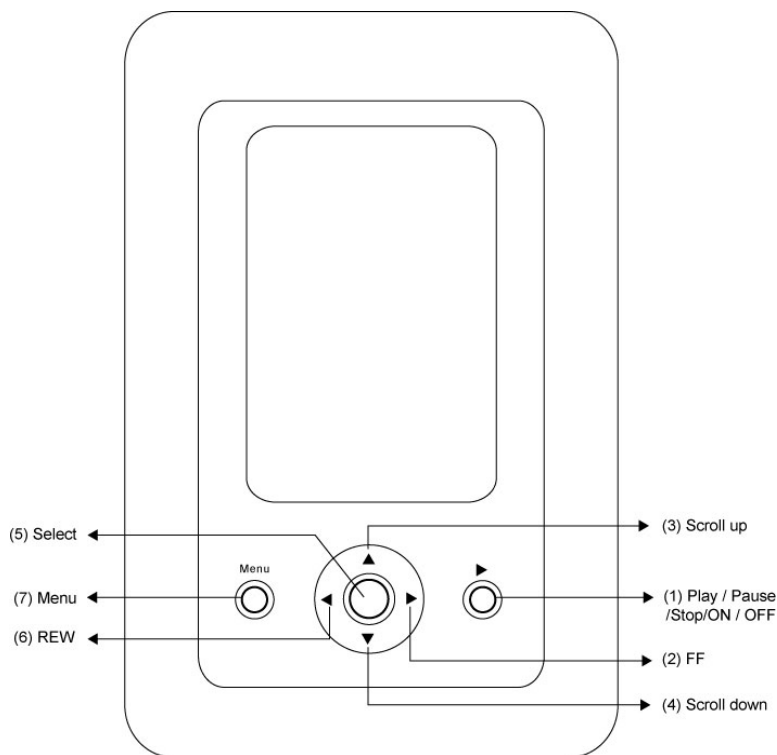
The diagram of "PC-Jukebox link" will show up on the screen of the MP3 player to indicate the player has been connected to the USB port of PC. While data transferring is ongoing, the progress bar will automatically appear the status of the processing. Do not disconnect the player from PC at this moment.

IMPORTANT NOTES:

- The removable drive provided by this player can be used for storage of files with file format other than MP3.
- When the HDD doesn't store the MP3 files, pressing the ? | / | button will have no effect.
- Any abnormal disconnection between PC and player may cause the computer to halt while transmitting data. This may cause the data in the HDD to be written in error. If necessary, you just need to proceed with scanning disk or defragment.
- Once the transfer of files has been started, you may press the Cancel button on the dialogue window to terminate the transferring process. Because it takes some time for PC to remove the data from the register buffer, the dialogue box may soon disappear on the window but the data exchange between the host and device is still in the process. After you plug Jukebox into your PC, the window systems will automatically shows a "Unplug or Ejection hardware" icon on the bottom right window task bar. To disconnect the Jukebox from your PC, double click on the Icon Tray and select "Unplug or Eject hardware". Follow the on screen steps to complete the disconnection.

Controls

	Button	Description
1	? /	1. Power on / off 2. Play / Pause / Stop
2	?	1. Press to skip to next song 2. Press and hold to forward search 3. Increase under specific settings
3	?	1. Scroll up for item selection 2. Increase under specific settings
4	?	1. Scroll down for item selection 2. Decrease under specific settings
5	SEL	Select item
6	?	1. Press to skip to previous song 2. Press and hold to backward search 3. Decrease under specific settings
7	MENU	Exit current state and return to previous state



NOTE:

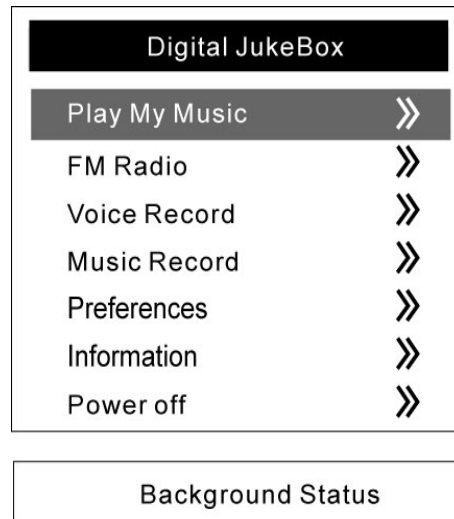
Press “MENU” above two seconds and the device prompt user to press “? | / |” to lock all buttons. Press “? | / |” to confirm. To unlock the hold setting, press MENU” above two seconds and the device prompt user to press “? | / |” to unlock all buttons. Press “? | / |” to confirm.

HDD Digital Jukebox Operation

To Power On

In the Power off condition, you need to press “? | / |” for 2 second to power on

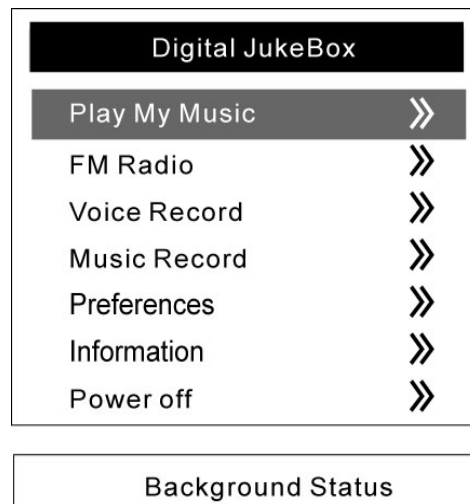
Main Menu



Playing Music

Scroll (? or ?) to “Play My Music”, then press “SEL”

Main Menu

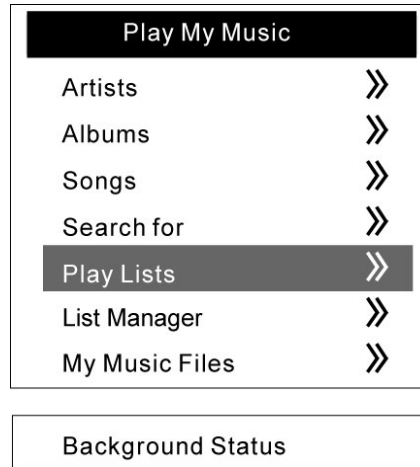


Playing Play Lists

1. Scroll (? or ?) to "Play Lists", then press "SEL"

My Music Menu

(Idle)



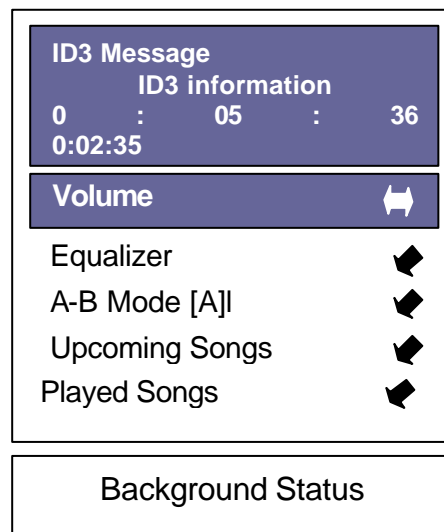
2. Choose the favorite play list (? or ?), then press "SEL"

Play List Menu



3. Choose title of song (? or ?), press "SEL" or "? | / |" to playback

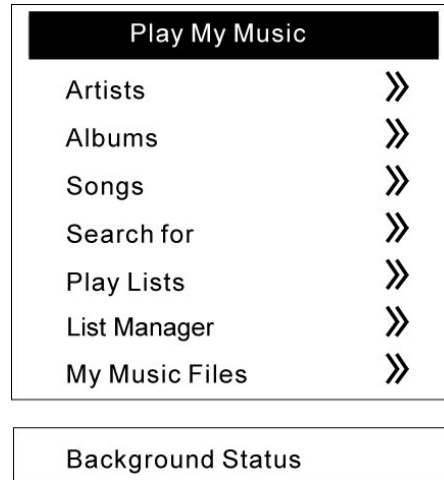
Playback



4. While the playback is underway, press “ESC / Menu” to navigate songs and execute other operations.
5. While navigating is underway, use navigating function to My Music Menu. Scroll indicating bar to Now Playing, then press “SEL” or idle for 18 seconds to Song Content Display.

My Music Menu
(Playback)

Songs

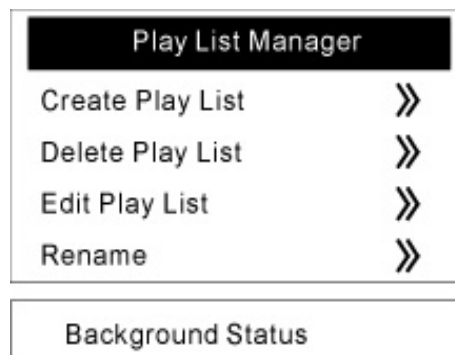


NOTE:

The contents of Recorded songs and FM Recorded are what user recorded from line-in or FM sources. Please refer to Recording section for further information

List Manager

- Scroll (? or ?) to “Play My Music”, then press “SEL”;
- Scroll (? or ?) to “List Manager”, then press “SEL” to go into the “Play List Manager” display.



1. Creating Play List

- Scroll (? or ?) to “Create Play List”, then press “SEL” to go into the “Create Play List “display.
- Under the edit box, select “Clear” to delete the default character string, “New Play List”.
- Scroll to select the first character of the desired Play list name and then press ”SEL” to save your choice. Continue to select the whole character string and press ”OK” to finish creating a new play list.

2. Deleting Play List

- Scroll to “Delete Play List”, then press “SEL” to go into the “Delete Play List “display.
- Select a play list you want to delete and press “SEL” to delete the play list. While you press the ”SEL”, the system will automatically pop up a dialog box to confirm the deletion instruction, then just choose and hit “yes” to finish it.

3. Edit Play List

- Scroll (? or ?) to “Edit Play List”, then press ”SEL” to go into the “Edit Play List “display.
- Select and press a playlist you want to edit and the system will automatically appear a “Select Function” dialog box to provide you two options including “Add Music” and “Delete Music”

3.1 “Add Music”

- Under “Select Function” dialog box, scroll to “Add Music” and then press.
- Under ”Select Source” dialog box, it will show you four options: “Artists”, “Albums”, “Songs” and “Search For”. Please choose any option to pick up desired tune.

3.2 “Delete Music”

- Under “Select Function” dialog box, scroll to “Delete Music” and then press “SEL” to enter the “Title list” display.
- Select and delete any song you want to delete

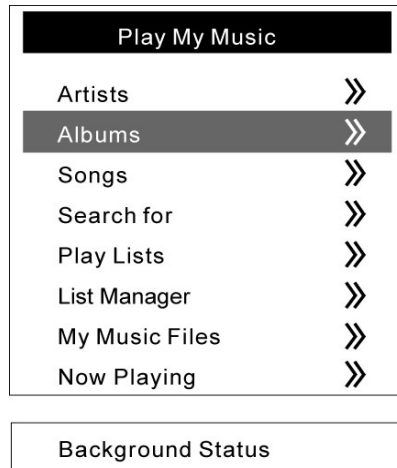
4. Rename

- Scroll (? or ?) to “Rename”, then press ”SEL” to go into the “Rename “display.
- Choose any “playlist” you want to rename and press “SEL” to go into the “edit box” for renaming the playlist name.
- Under the edit box, select “Clear” to delete the original playlist name.
- Scroll to select the first character of the desired Play list name and then press ”SEL” to save your choice. Continue to select the whole character string and press ”OK” to finish renaming the playlist.

Playing Artists, Albums

1. Scroll (? or ?) to “Artists” or “Albums”, then press “SEL”

My Music Menu

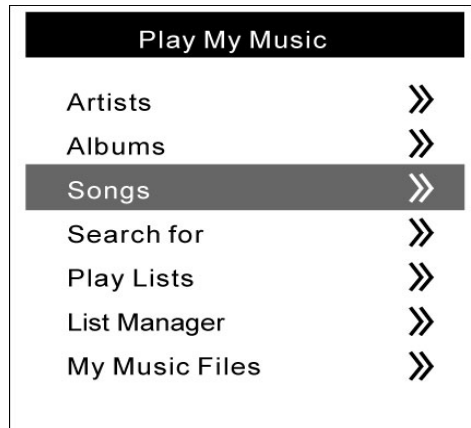


2. Choose the favorite artist or album (? or ?), then press “SEL”
3. Choose artist or album of song (? or ?), press “SEL” or “? | / | ” to playback
4. While the playback is underway, press “ESC / Menu” to navigate songs and execute other operations.
5. While navigating is underway, use navigating function to My Music Menu. Scroll indicating bar to Now Playing, then press “SEL” or idle for 18 seconds to Song Content Display.

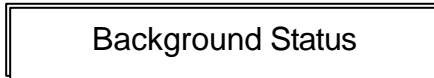
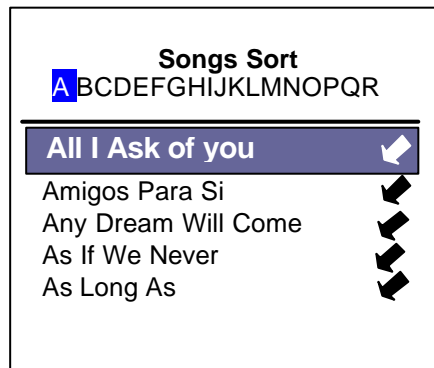
Playing Songs

1. Scroll (? or ?) to “Songs”, then press “SEL”

My Music Menu



2. Scroll (? or ?) to select the first character of each music title, then press “SEL” to confirm

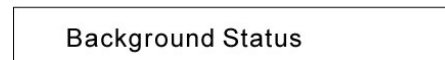
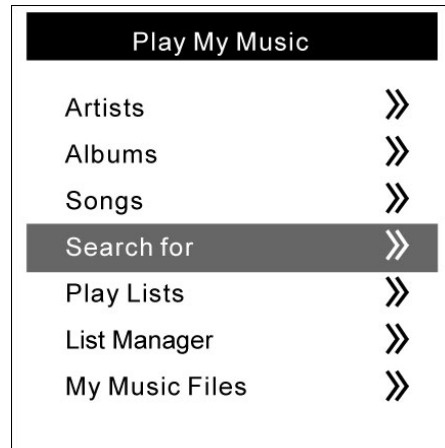


3. Scroll to favorite title (? or ?), press “SEL” or “? | / |” to playback.
4. While navigating is underway, use navigating function to My Music Menu. Scroll indicating bar to Now Playing, then press “SEL” or idle for 18 seconds to Song Content Display

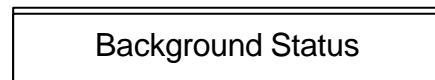
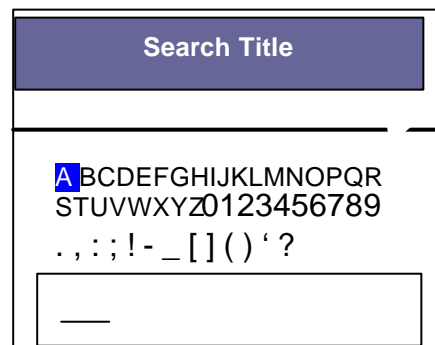
Search for

1. Scroll (? or ?) to “Search for”, then press “SEL”

My Music Menu



2. Scroll (? or ? or ? or ?) to select the first character of each music title, then press “SEL” to confirm, and so do other successive characters.



3. Scroll (? or ? or ? or ?) to ?, press “SEL” to select single song from current list.
4. press “SEL” or “? | / |” to play selected song and postpone the scheduled songs until the single song playback is completed.

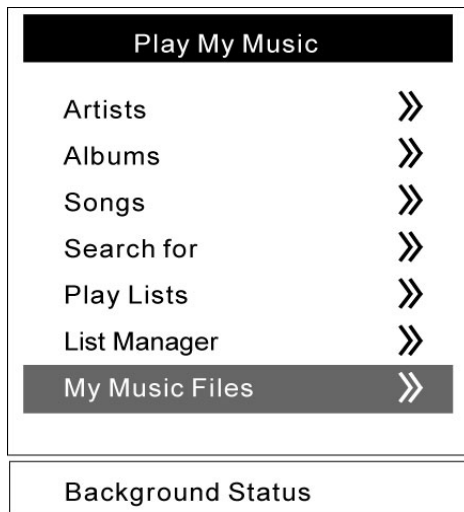
Useful tips for searching

1. Selecting “*” as the character can replace any other ones while searching. For example, typing “a*c” string to search all available titles which match the first and third characters of “a” and “c”.
2. Scroll (? or ? or ? or ?) to ? to backspace
3. Scroll (? or ? or ? or ?) to X to dismiss typing string

Playing My Music Files

1. Scroll to “My Music Files”, then press “SEL”

My Music Menu



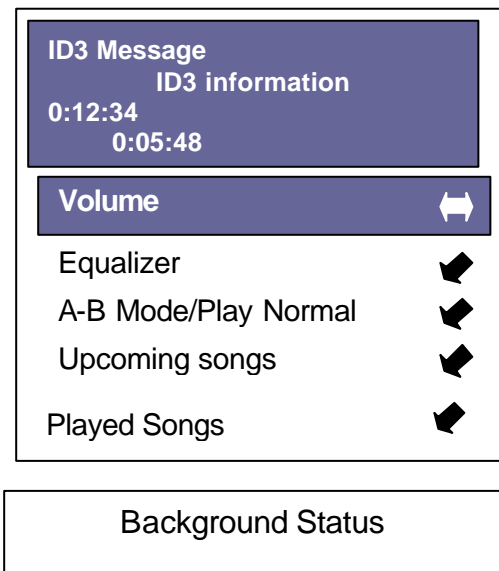
2. Scroll to select favorite file name, then press “SEL” or “? ↓ / ↑” to playback
3. While navigating is underway, use navigating function to My Music Menu. Scroll indicating bar to Now Playing, then press “SEL” or idle for 18 seconds to Song Content Display

NOTE: Only one sub-directory is available under My Music directory.

Song Content Display

While playback is underway, song content information will emerge on the LCD screen. Scroll (? or ?) to adjust volume, change equalizer, trigger A-B mode or look up upcoming songs.

Playback
(Volume control)



Volume Control

1. Scroll (? or ?) to “Volume”, then press “SEL”
2. Scroll (? or ?) to adjust volume, press “SEL” to confirm or “MENU” to cancel

Equalizer

1. Scroll (? or ?) to “Equalizer”, then press “SEL”
2. Press “SEL” to switch equalizer, scroll (? or ?) to change between “Normal”, “Classic”, “Jazz”, “Rock”, “Pop”, “Bass” or “Genre” mode, then press “SEL” to confirm
3. If EQ has been set as Genre mode, scroll down (?) to successive item for high or low frequency settings
4. Press MENU to return

A – B Mode

1. Scroll (? or ?) to “A – B mode [A]”, then press “SEL” to set the beginning point
2. Press “SEL” again to set the end point
3. Press “SEL” to terminate A – B mode and resume normal playback

Looking up for Upcoming Songs

1. Scroll (? or ?) to “Upcoming Songs”, then press “SEL” to look up approaching songs
2. Press MENU to return

Looking up for Played songs

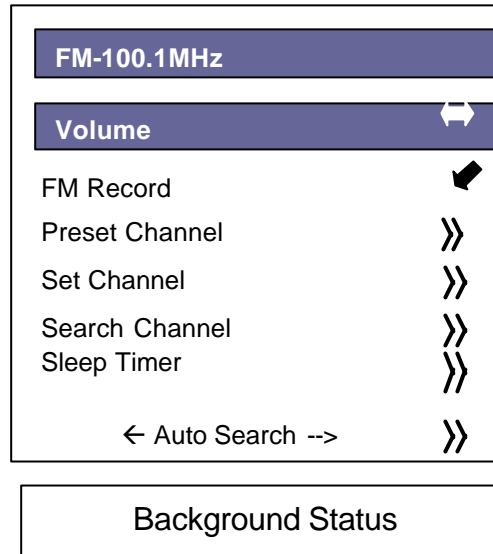
1. Scroll (? or ?) to “Played Songs”, then press “SEL” to look up previously playing songs
2. Scroll (? or ?) to favorite song, then press “SEL” to replay this song or press MENU to return

FM Radio

Scroll to “FM Radio”, then press “SEL”

Main Menu



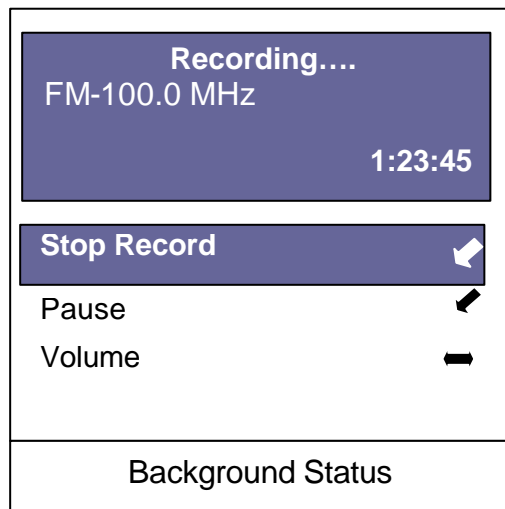


Volume control

1. Scroll (? or ?) to “Volume”, then press “SEL”
2. Scroll (? or ?) to adjust volume, press “SEL” to confirm or “MENU” to cancel

FM Record

1. Scroll (? or ?) to “FM Record”, then press “SEL”
2. Scroll (? or ?) to “Pause” and press “SEL” to pause recording. While pause-recording is underway, scroll to “Resume” and press “SEL” or press “? ! / ! ” to resume recording
3. Scroll (? or ?) to “Volume” and press “SEL” to change earphone output volume while recording.
4. Scroll to “Stop Record” and press “SEL” to terminate recording



Preset Channel

1. Scroll (? or ?) to “Preset Channel”, then press “SEL”
2. Scroll (? or ?) to select preset frequency, then press “SEL” to confirm or “MENU” to exit

FM Channel	
Return	
Ch-1	96.7MHz
Ch-2	88.0MHz
Ch-3	90.1MHz
Ch-4	98.2MHz

Background Status

Set Channel

1. Scroll (? or ?) to “Set Channel”, then press “SEL”
2. Scroll (? or ?) to reset the current FM frequency to appointed channel, then press “SEL” to confirm or “MENU” to exit

Search Channel

1. Scroll to “Search Channel”, then press “SEL”
2. Press (? or ?) to adjust frequency by 100kHz. Press and hold FF or REW to continuously search frequency.
3. Press “SEL” to confirm frequency or “MENU” to exit

Auto Searching

Press (? or ?) to adjust frequency by 100kHz. Press and hold FF or REW to continuously search plain frequency.

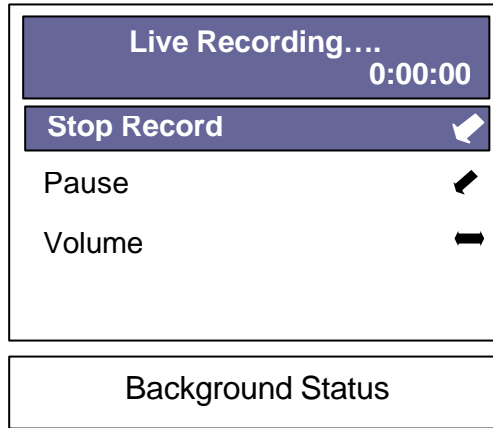
Sleep Timer

1. Scroll (? or ?) to “Sleep Timer”, then press “SEL”
2. Press to change the settings. Scroll (? or ?) to change the default sleep timer, then press “SEL” to confirm or “MENU” to exit

Recording

Voice Record (Recording by Built-in Mic)

1. Scroll (? or ?) to “Voice Record”, then press “SEL”
2. Scroll (? or ?) to “Do Record”, then press “SEL” to confirm
3. Scroll (? or ?) to “Pause” and press “SEL” to pause recording. While pause-recording is underway, scroll to “Resume” and press “SEL” or press “? | / | ” to resume recording



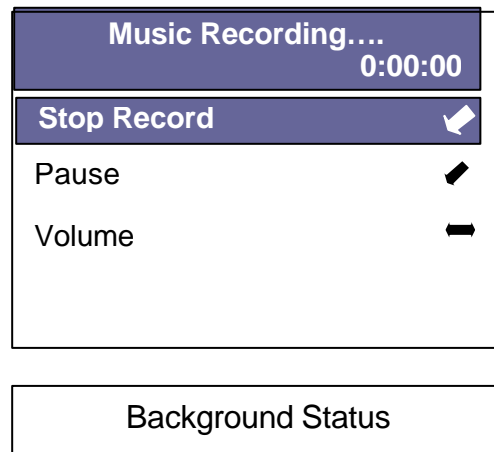
4. While recording is underway, scroll to “Volume” and press “SEL” to adjust earphone output volume
5. Scroll (? or ?) to “Stop Recording” and press “SEL” to terminate recording

FM Record (Recording from FM Radio)

Please refer to FM section

Music Record (Recording from Line-in Source)

1. Scroll (? or ?) to “Music Record”, then press “SEL”
2. Scroll to “Record”, then press “SEL”
3. Scroll (? or ?) to “Pause” and press “SEL” to pause recording. While pause-recording is underway, scroll to “Resume” and press “SEL” or press “? | / | ” to resume recording



4. While recording is underway, scroll to “Volume” and press “SEL” to adjust earphone output volume
5. Scroll to “Stop Recording” and press “SEL” to terminate recording

NOTE: You can follow the path: Preferences/ Record Quality to select your desired record quality.

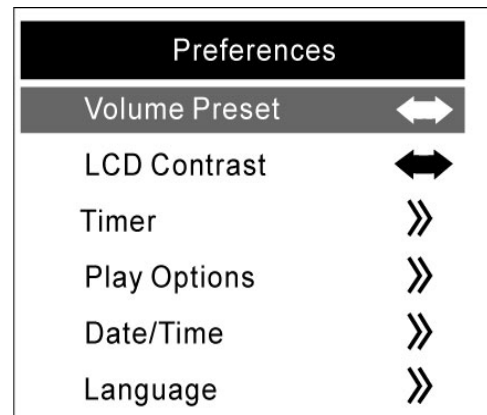
Preferences

Scroll to “Preferences”, then press “SEL”

Main Menu



Settings Menu



Volume Preset

1. Scroll (? or ?) to “Volume Preset”, then press “SEL”
2. Press (? or ?) to change the default volume while powered on, then press “SEL” to confirm or “MENU” to cancel

LCD Contrast

1. Scroll (? or ?) to “LCD Contrast”, then press “SEL”
2. Press (? or ?) to change the default LCD contrast while powered on, then press “SEL” to confirm or “MENU” to cancel

Timer

Scroll (? or ?) to “Timer”, then press “SEL”

1.Backlight Timer

- 1.1 Scroll (? or ?) to “Backlight Timer”, then press “SEL”
- 1.2 Press “SEL” and scroll (? or ?) to change the default backlight timer (0~10 sec, ON), then press “SEL” to confirm or “MENU” to exit

2.Sleep Timer

- 2.1 Scroll (? or ?) to “Sleep Timer”, then press “SEL”
- 2.2 Press “SEL” and scroll (? or ?) to change the default sleep timer, then press “SEL” to confirm or “MENU” to exit

3.Standby Timer

- 3.1 Scroll (? or ?) to “Standby Timer”, then press “SEL”
- 3.2 Press “SEL” and scroll (? or ?) to change the default standby timer, then press “SEL” to confirm or “MENU” to exit

Play Options

1. Scroll (? or ?) to “Play Options”, then press “SEL”
2. Scroll to “Sequence Playlist”, “Repeat Title”, “Repeat Playlist”, “Random” or “Repeat & Random”, then press “SEL” to confirm or “MENU” to exit

Date/Time

1. Scroll (? or ?) to “Date / Time”, then press “SEL”
2. Scroll (? or ?) to “Year”, “Month”, “Date”, “Hour” or “Min” respectively, then press “SEL”
3. Scroll (? or ?) to modify and press “SEL” to confirm or “MENU” to exit

Language

1. Scroll (? or ?) to “Language”, press “SEL” to go into the “Music Information” display including five languages: English, Traditional Chinese, Simplified Chinese, Japanese and EUROPE.
2. Select any language you want to use and then press “SEL” to confirm your setting.
3. After you finish “Music Information” setting, the player system will let you enter the “Menu Language” display to set the “Menu Language” options including English, German, Spanish, French, Italian, Dutch and Portuguese.
4. Select any language you want to use and press “SEL” to confirm your choice.

Record Quality

1. Scroll (? or ?) to “Record Quality”, then press “SEL”
2. Select any desired record quality option and then press “SEL” to confirm your choice.

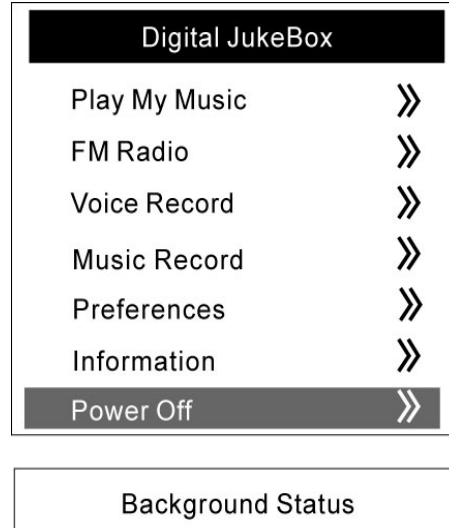
Information

1. Scroll (? or ?) to “Information” under Main Menu, then press “SEL” to confirm
2. You can see the related system information of the player like Firmware version/Hardware version/Total space/Free space/How many songs the player hold...

To Power Off

3. Scroll (? or ?) to “Power Off” under Main Menu, then press “SEL” to confirm

Main Menu



4. In the “Stop” mode(status of idle), you also can press “? | / | ” for 2 second to power off

Warranty and support

More information updates or assistance on this product is available at H&B website under Jukebox Player product page: www.hb-direct.com

Important safety information

Read these instructions carefully and pay attention to all warnings and guidelines.

Do not overload electrical sockets or extension cables. Overloading can result in fire or electric shock.

Do not spill liquids on the Jukebox. If the Jukebox does not function normally, or if it emits unusual sounds or odors, pull out the plug immediately and contact an authorized technician.

Do not attempt to service the Jukebox yourself. If you open or dismantle the shielding, you expose yourself to dangerous voltage and other hazards. All maintenance must be carried out by qualified service technicians.

Environmental information

The system is made of recyclable materials which can be reused if disassembled by authorized personnel.

Please follow local regulations for the disposal of packaging materials, used batteries and discarded units.

Warranty certificate

H&B provides a twelve (12) month warranty from the date of purchase against material and manufacturing defects.

In the event of defects covered by the warranty, the product must be returned to the dealer that sold the product.

If any problems arise, information on our authorized service centers is available the dealer who sold the product.

Terms of Warranty

1. The warranty is only valid on presentation of a correctly completed warranty certificate and sales ticket, and if the serial number on the product is fully legible.

2. The obligations of H&B are limited either to repair or replacement of defective components. The repair or replacement of defective components is based on an assessment by H&B.

Exchange is only possible if the repair cannot be performed.

3. Warranty repairs must be performed by an authorized H&B dealer, or an authorized service centre. No remuneration is provided for repairs performed by unauthorized workshops.

Any repairs or damage to the product caused by unauthorized intervention are not covered by this warranty.

4. This product will not be viewed as defective, either in materials or in manufacture, if adaptation to national, local, technical or safety-related requirements is required in countries other than the specific country for which the product was originally designed and manufactured.

5. This warranty does not cover these types of adaptations, and no remuneration will be offered for these types of adaptations or for any consequential damages. The warranty does not cover the following:

Periodic inspection, maintenance and repair or replacement of parts resulting from normal wear.

Costs connected to transport, disassembly or installation of the product.

Misuse, including use for other purposes than was intended or faulty installation.

Damage caused by lightning, water, fire, natural catastrophes, war, insurrection, incorrect line voltage, insufficient ventilation or other causes beyond the control of H&B.

6. This warranty applies to every legal owner of the product during the warranty period.

Distributor

H&B products are distributed by:

JPF Entertainment

50, rue Ardoin, Bat 566

93400 Saint Ouen

FRANCE

info@hb-direct.com

www.hb-direct.com

Tel + 33 1 49 489 340

Fax + 33 1 40 109 599



H&B

DIGITAL HDD AUDIO PLAYER



Distribution : **JPF ENTERTAINMENT**
50, rue Ardoin 93400 Saint Ouen / France
Tél. : 33 (0) 1 49 48 93 40 Fax. : 33 (0) 1 40 10 95 99
www.hb-direct.com

www.hb-direct.com