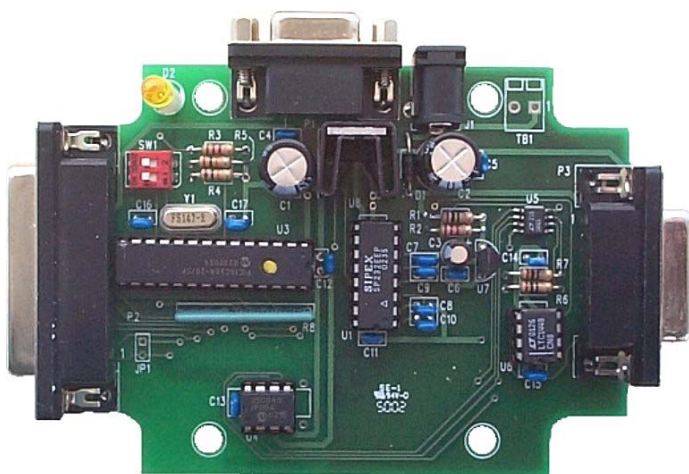


Integrity Instruments

P.O. Box 451
Pine River Minnesota
56474 USA

Order Phone 800-450-2001
Fax Phone 218-587-3414
Tech Phone 218-587-3120

<http://www.integrityusa.com>



232M200 Series I/O Modules

Digital I/O
Analog I/O

Table of Contents

Introduction

Features.....	3
Quick Start	4

Communications

RS-232 Command Information	6
----------------------------------	---

Commands and Responses

Command and Response Table	7
Command and Response Examples	8
Analog Control Nibble.....	9

Module Configuration

EEPROM Map	10
EEPROM Map	11

Sampling rates

Analog and Digital.....	12
-------------------------	----

Modes of Operation

Polled Mode.....	12
Asynchronous Update Mode	12
Continuous Stream Mode	13
Continuous Stream Mode Configuration EEPROM Map	14
Continuous Stream Mode Example	15

Digital I/O Technical Information

Digital I/O Characteristics	16
Digital I/O Port Configuration Example	16
PWM Command	17

Analog I/O Technical Information

Analog Converter Characteristics	18
Sampling Voltage	18
Analog Output	18
Sampling Current (4 - 20 ma)	19

Digital & Analog I/O Port Specifications

Digital & Analog connector pinouts	20
--	----

Module Specifications

PCB Illustrations	21
DIP switch and jumper settings	21
IC Descriptions	22
232 cabling and specifications	22

Peripheral Modules

Analog Connection Board	23
Signal Conditioner Board	23
DB15/DB25 Terminal Strip Board	23
Digital Interface Board	23

Introduction

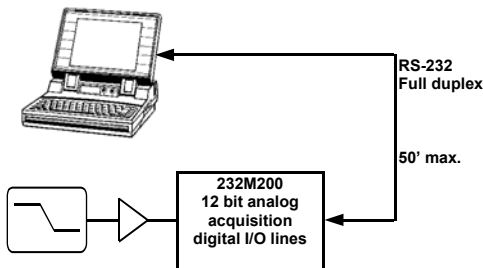
Welcome to the Integrity Instruments **232M200 Series** of I/O modules. These modules using RS-232 communications are available in different configurations dependent on your needs and applications. In addition they are offered in an enclosure or open allowing you the end user complete flexibility when determining the parameters for your project.

Configurations for 232M200 models with enclosure are:

232M200CE	8 digital I/O
232M2A0CE	8 digital I/O and 2 channels A/D conversion
232M2ADCE	8 digital I/O and 2 channels A/D conversion and 2 channels D/A conversion

I/O Module features:

MPU:	Microchip PIC16C63A
EEPROM:	Microchip 25C040
MPU Clock:	14.7456 Mhz
Interface:	RS-232 (single ended)
Baud:	9600, 19200, 57600, 115200 (DIP switch selectable)
LED:	Yellow color diagnostic LED
Watchdog:	MPU has built-in watchdog timer
POR:	MPU contains timed Power On Reset circuitry
Brownout:	MPU brownout detection circuitry built-in
Temperature:	0° to 70°C (32° to 158°F) <i>Commercial Temperature Range</i> -40° to 85°C (40° to 185°F) <i>Industrial Temperature Range</i>
PCB:	FR4
Power:	7.5Vdc to 15 Vdc (approx. 50 ma nominal power)



232M200 Series Features

- 8 Digital I/O lines
- 2 12 bit Analog Inputs
- 2 12 bit Analog Outputs
- PWM Output
- 32 bit Pulse Counter 1 Mhz

Quick Start Instructions

You need the following:

- EZTerminal program available **free** on our website <http://www.integrityusa.com>
- An open COMPORT on your PC
- Power supply PS9J (9VDC 400 ma unregulated)
- A cable to connect your PC (C9F9M-6 6 foot serial cable)

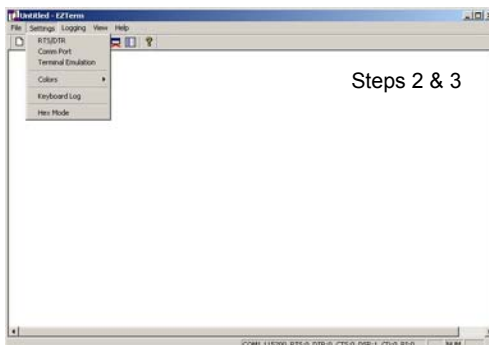
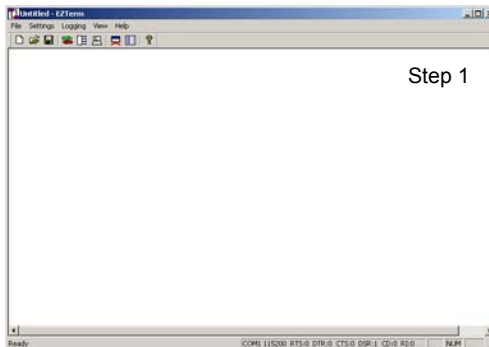
Make these DIP switch settings for 115,200 baud

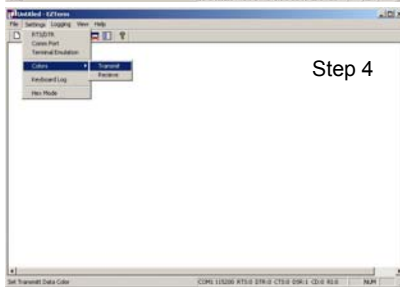
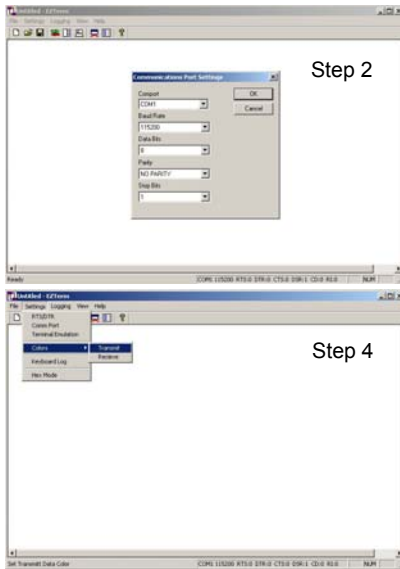
SW1: ON

SW2: ON (These are **factory default** settings, see page 21)

Launch the EZTerminal program

1. Double click the icon in whatever area you have put the program.
2. Under "**Settings**" then choose Comport and select your RS-232 port, 115,200 Baud Rate, 8 Data Bits, NO PARITY, and 1 Stop Bits.
3. Under "**Settings**" now choose "**Terminal Settings**", and check the "**Append LF to incoming CR**" box, and "**Local echo typed characters**" check box.
4. You may change the color of the transmitted and received characters by going under "**Settings**" and selecting "**Colors**" then "**Transmit**" or "**Receive**" and pick the color of your choice.





Your First Command

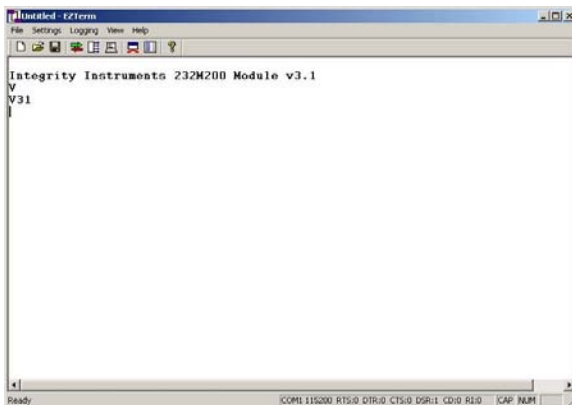
Now that you have a EZTerminal session running, you're ready to power up the **232M200 Series I/O Module**. After powering up your **232M200 Series Module**, EZTerminal will receive a welcome message from the unit indicating you are ready to provide your first command.

RS-232 Firmware Version 3.1 Command:

- Type the letter **V** and the **Enter Key**
- You should see V30 on the screen
- **NOTE:** Make sure to type **CAPITAL V**, not lowercase v!

After your first command, see **Commands and Responses** section for more commands.

Screenshots and setup instructions performed running EZTerminal on a PC installed with Microsoft® Windows® XP Operating System.



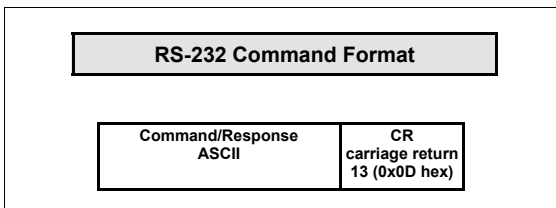
Communications Interface

The Integrity Instruments **232M200 Series** I/O Modules support RS-232 communications interface using simple **ASCII** commands. A carriage return (**decimal code 13 or Hex code 0x0D**) marks the end of each command. Line feeds (**decimal code 10 or Hex code 0x0A**) are ignored.

RS-232 Interface:

- RS-232 operates Full Duplex
- RS-232 modules can also enter **Continuous Stream Mode** whereby the module is configured via EEPROM settings to continuously send data to output its current Digital, Counter or Analog readings.

RS-232 Command Format



NOTE

- All numeric data is represent as **ASCII Hexadecimal integers** (values **x/y** in the Command and Response table)
- If a module receives an illegal or improperly formatted command, Error Response is sent.
- All ASCII characters are **CASE SENSITIVE** (use all capital letters!)

Integrity Instruments 232M200 Series User Manual

Commands and Responses v3.0 Firmware

Command Sent by Host	Response Sent by I/O Module	Description
V	Vxy	Firmware version x.y
I	Ixxyy	Input digital port status xx = 00 yy = PORT2 Also returns current output port status
Oxxyy	O	Output digital port: xx = (ignored) yy = PORT2
Txxyy	T	Set digital direction: xx = (ignored) yy = PORT2 bit set(1) = Input, bit clear(0) = Output
G	Gxxyy	Get current digital direction: xx = 00 yy = PORT2 bit set(1) = Input, bit clear(0) = Output
N	Nxxxxxxxx	Get Pulse Counter (xxxxxxxx 32 bit counter value)
M	M	Clear Pulse Counter
Uy	Uyxxx	Unipolar sample analog (y control nibble, xxx analog value)
Lyxxx	L	D/A output (y channel setting 0 or 1, xxx 12 bit D/A output)
K	Kxx	Get receive error count (xx current count)
J	J	Clear receive error count
Pxxyyy	P	PWM (xx = PWM frequency, yyy = PWM duty)
Wyyxx	W	Write EEPROM (yy address, xx value)
Ryy	Rxx	Read EEPROM (yy address in command, xx value in reponse)
S	S	Start continuous stream mode
H	H	Halt continuous stream mode
Z	Z	Reset CPU
	X	Command error response sent by module

Commands and Responses

The following table illustrates actual command and response data for an RS-232 interface.

NOTE:

- All numeric data is represent as ASCII Hexadecimal integers.
- The symbol ↵ equates to a carriage return (decimal 13, hex 0x0D).

Command Sent by Host	Response Sent by I/O	Description
V↵	V30↵	Module Firmware version 3.0
I↵	I000F↵	Input digital port [PORT2 bits 0-3 ON] [PORT2 bits 4-7 OFF] Note: this command also returns the current digital output
O007F↵	O↵	Output digital port [PORT2 bit 7 OFF, bits 0-6 ON]
T0080↵	T↵	Set digital direction [PORT2 bit 7 INPUT, bits 0-6 OUTPUT]
G↵	G0080↵	Get current digital direction [PORT2 bit 7 INPUT, bits 0-6 OUTPUT]
N↵	N0000000F↵	Get pulse counter: Current count = 15
M↵	M↵	Clear pusle counter: Current count = 0
U3↵	U340F↵	Unipolar analog control nibble = 0x3 Analog reading = 0x40F
L1800↵	L↵	D to A Output Channel 1 = 2.5 Volts
K↵	K00↵	Current receive errors = 0
J↵	J↵	Clear receive error count: Current receive errors
P4801F↵	P↵	PWM freq = 50499 Hz, PWM duty = 10.6%
W0410↵	W↵	Write EEPROM Address 0x04 with value 0x10
R04↵	R10↵	Read EEPROM Adress 0x04 (value is 0x10)
S↵	S↵ I00FF↵ U800F↵ I00FF↵ U800F↵	START continuous stream mode See Modes of Operation section This example illustrates continuous stream mode configured to continuously update with Input Digital Port command and Query Analog command with control 0x1. The module continues until a command H↵is received.
H↵	H↵	HALT continuous stream mode
Z↵	Z↵	Reset CPU (forces a watchdog timeout)

Analog Control Nibble and Example - Analog Sample Command “U”

The **232M200 Series** I/O modules equipped with analog inputs utilizes the Linear Technologies LTC1861 analog to digital conversion chip. In the process of performing a data sample, the user sends a control nibble to the **232M200 Series** module. The **232M200 Series** module in turn performs a data conversion using the control nibble and transmits a response data sample back. The following table lists the analog configurations.

NOTE

- All numeric data is represent as ASCII Hexadecimal integers
- The symbol ↵ equates to a carriage return (decimal 13, hex 0x0D)
- See **Analog I/O Technical Information** section for sample to volts conversion

Control Nibble	Analog Sample
0	Differential : CH0+, CH1-
1	Differential : CH0-, CH1+
2	Single Point: CH0
3	Single Point: CH1

Command Sent by Host	Response Sent by I/O Module	Description
U2↵	U2123↵	Unipolar sample CH0 (Control = 2) Analog sample = 0x123 (decimal 291)

EEPROM Map:

Address	Description
0x00	N/A - Reserved
0x01	N/A - Reserved
0x02	N/A - Reserved
0x03	Data Direction Port 2 Bit set (1) = Input Bit clear (0) = Output [factory default = 0xFF]
0x04/0x05	Asynchronous Update Mode Configuration 0x0000= No asynchronous updates 0x0001= Change Update on Digital Input or Counter change 0x0002...0xFFFF = Timed Update (Time = Value * 1 milliseconds) 16 bits - upper byte in 0x04 lower byte in 0x05 [factory default = 0x0000]
0x06	N/A - Reserved
0x07	Port 2 Power on Default output [factory default = 0x00]
0x08 See Note 1	Expander board flag (Opto-22 [®] modules attached) 0x00 = No expander board attached 0xFF = Expander board attached (invert digital signals) [factory default = 0x00]
0x09/0x0A	D/A Channel 0 Power on Default output 12 bits - upper nibble in 0x09, lower byte in 0x0A [factory default = 0x000]
0x0B/0x0C	D/A/ Channel 1 Power on Default output 12 bits - upper nibble in 0x0B, lower byte in 0x0C [factory default = 0x000]
0x0D See Note 2	A/D Channels sample clock rate 0x00 = Normal A/D Channels sample clock rate 0xFF = Slowed A/D Channels sample clock rate [factory default = 0x00]
0x0E	N/A - Reserved

WARNING!

The I/O Module CPU must be reset before new EEPROM settings take effect.

NOTE:

1. This flag is used when an expander board is attached. It allows for polarity interface to the industry standard I/O modules used with the expander board based on open collector logic that these modules use.
2. This is used to slow the A/D Channel sample clock rate. This may help when the A/D channels have a high impedance input attached.

EEPROM Map:

Address	Description
0x0F	N/A - Reserved
0x10	Continuous Stream Analog configuration count 0x00 = No analog stream readings 0x01... 0x02 = Number of analog queries [factory default = 0x00]
	See Modes of Operation Continuous stream for locations 0x11...0x1A
0x11	Analog Query 1 - control byte - analog control nibble
0x12	Analog Query 2 - control byte - analog control nibble
0x13 - 0x18	N/A - Reserved
0x19	Continuous Stream Digital Input configuration 0x00 = Digital Input status OFF 0xFF= Digital Input status ON [factory default = 0x00]
0x1A	Continuous Stream Pulse Counter configuration 0x00 = Pulse Counter status OFF 0xFF = Pulse Counter status ON [factory default = 0x00]
0x1B ... 0xFF	Available to User

Analog & Digital I/O Sampling Rates

Analog I/O		
Baud Rate	Polled Mode	Continuous Stream Mode
115,200	787	1533
57,600	415	858
19,200	143	310
9600	72	157
Digital I/O		
Baud Rate	Polled Mode	Continuous Stream Mode
115,200	879	1884
57,600	456	960
19,200	156	320
9600	78	160

Sampling rates are in samples per second for a single analog channel or 8 bit digital I/O port tested on Windows 2000 850 Mhz P3 with A/D clock running at full speed. Samples per channel = Sample rate ÷ number of channels being sampled.

Modes of Operation:

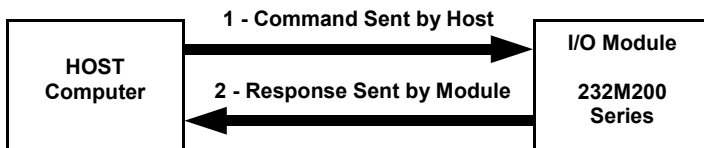
The Integrity Instruments I/O modules can operate in three operation modes:

- 1) Polled
- 2) Asynchronous Update
- 3) Continuous Stream

These modes of operation can be used singularly or together in combination.

#1) Polled Mode

By far, the Polled Mode is the most common usage of the **232M200 Series** I/O modules. In this mode the Host computer sends a command to the I/O Modules which in turn sends an associated response back to the Host computer.



#2) Asynchronous Update Mode

The I/O Module sends data **without** the Host sending a command to poll the I/O Module in Asynchronous Update Mode.

NOTE: Asynchronous Update Mode is configured using EEPROM locations 0x04/0x05.

Value at EEPROM Location 0x04/0x05	Description
0x0000	Asynchronous Update Mode disabled
0x0001	State Change Update Digital Input or Pulse Counter change
0x0002 to 0xFFFF Decimal Range 2 to 65535)	Timed Update Time = Value * 1 millisecond Range = .002 second - 65.5 seconds

#2a) Asynchronous Update Mode — State Change Update

When EEPROM locations 0x04/0x05 = 0x01, the **232M200 Series** I/O module enters an asynchronous update mode whereby any detected change on the Digital Input port or the Counter Capture port causes the I/O module to transmit data to the host.

Status Change	Data Sent by I/O Module
Digital Input port change	Ixxxx
Counter Capture change	Nxxxxxxxx



#2b) Asynchronous Update Mode — Timed Update

When EEPROM locations 0x04/0x05 = 0x0002...0xFFFF, the **232M200 Series** I/O module enters a timed update mode whereby the I/O module will send data to the host after the specified time period has elapsed.

Time Period = Value (EEPROM locations 0x04/0x05) * .001 second

When using Asynchronous Update Mode, the I/O module uses the **Continuous Stream Mode** configuration to determine the data sent to the host.

#3) Continuous Stream Mode

The final mode of operation is Continuous Stream Mode. This mode constantly sends or **streams** data to the host until the host halts the mode. In brief, the I/O Module can send 1 thru 2 analog samples, digital input status, and the counter capture status. **The Continuous Stream mode function will work in all other modes.**

The I/O module uses parameters found in EEPROM locations 0x10 thru 0x1A to configure the Continuous Stream mode. Therefore, the EEPROM must be configured before engaging the Continuous Stream mode.

Continuous Stream Mode setup steps

1. Configure EEPROM locations 0x10 thru 0x1A
2. Begin Continuous Stream mode by sending command 'S' to the I/O Module
3. Halt Continuous Stream mode by sending command 'H' to the I/O Module

Continuous Stream Mode Configuration — EEPROM Locations

All parameters configuring the Continuous Stream mode are stored in EEPROM. See the following table for a description of the locations and the parameters. Use command '**W**' to update EEPROM values.

EEPROM	Value	Description
0x10	0x00...0x08	Analog Configuration 0x00 = No analog samples 0x01...0x02 = Number of analog samples
0x11 <i>Sample 1</i>	0x0y ... 0x0y	Unipolar Analog: y = analog control nibble
0x12 <i>Sample 2</i>	0x0y ... 0x0y	Unipolar Analog: y = analog control nibble
0x19	0x00 0xFF	Digital Input status disabled Digital Input status enabled
0x1A	0x00 0xFF	Pulse Counter status disabled Pulse Counter status enabled

Continuous Stream Mode Example

In this example, the I/O module EEPROM is configured to take 2 Analog samples and update the Counter status.

EEPROM Location 0x10	0x02	<i>Take 2 Analog samples</i>
EEPROM Location 0x11	0x02	<i>Sample 1 - Unipolar sample CH0</i>
EEPROM Location 0x12	0x03	<i>Sample 2 - Unipolar sample CH1</i>
EEPROM Location 0x1A	0x01	<i>Pulse Counter Status enabled</i>

Continuous Stream Mode Example continued

The following table illustrates the Host Command and I/O Module responses for the continuous stream example configuration and usage.

EEPROM Location 0x10	0x02	<i>Take 2 Analog samples</i>
EEPROM Location 0x11	0x02	<i>Sample 1 - Unipolar sample CH0</i>
EEPROM Location 0x12	0x03	<i>Sample 2 - Unipolar sample CH1</i>
EEPROM Location 0x1A	0xFF	<i>Counter Status enabled</i>

NOTE

- All numeric data is represent as ASCII Hexadecimal integers
- The symbol ↵ equates to a carriage return (decimal 13, hex 0x0D)

Host Sends	I/O Module Sends
W1002↵	W↵
W1102↵	W↵
W1203↵	W↵
W1AFF↵	W↵
S↵	S↵ <i>Continuous Stream mode started</i>
	U2023↵
	U3823↵
	N0000 0044↵
	U2023↵
	U3823↵
	N0000 0044↵
 repeats continually
H↵	H↵ <i>Continuous Stream mode halted</i>

The HOST may send any command during the Continuous Stream mode and it will be accepted and processed by the I/O Module as in normal operation.

NOTE

Engaging the Continuous Stream mode at a high baud rate (115.2K baud) may overwhelm certain host computer systems due to the high volume of data transmitted on the RS-232 link. This is especially true of slower 386 or 486 based systems running Windows 95 with limited memory resources.

Digital I/O Characteristics

The following chart lists the Digital I/O characteristics and values.

Characteristic	Value
Digital I/O Current	I/O line source & sink 25 ma Total current PORT2 200 ma
Digital I/O Voltage Levels	Input Off (0) = 0V - 0.8V Input On (1) = 2.0V - 5.0V Output Off (0) = 0.6V max. Output On (1) = 4.3V min.
Pulse Counter Input	1 Mhz max. input rate 32 bit counter capture Counter increments on high-low transition

Digital Port Configuration Example

Any Digital I/O configuration changes made to the I/O Module using the 'T' command are stored in EEPROM location 0x03.

EEPROM Location 0x03 Port 2 I/O Configuration

When using either the 'T' command or directly writing to EEPROM using the 'W' command, a binary 1 at a bit location puts the I/O line into Input mode, while a binary 0 at a bit location puts the I/O line into Output mode.

NOTE

- All numeric data is represent as ASCII Hexadecimal integers
- The symbol ↵ equates to a carriage return (decimal 13, hex 0x0D)

Host Command	Module Response	Action
T0000↵	T↵	All I/O lines are configured as Outputs
T00FF↵	T↵	All I/O lines are configured as Inputs
T000F↵	T↵	Port 2 bits 0-3 Inputs Port 2 bits 4-7 Outputs
T00F0↵	T↵	Port 2 bits 0-3 Outputs Port 2 bits 4-7 inputs
T0034↵	T↵	Port 2 bits 4,5,2 Inputs Port 2 bits 7,6,3,1,0 Outputs

Pulse Width Modulation (PWM) Characteristics

The **232M200 Series** modules have a configurable PWM output. There are two settings to configure for proper PWM operation: **PWM frequency** and **PWM duty cycle**.

PWM — Command

Pxxxxyy xx = Pwm_Divisor yyy = Pwm_Duty (10 bits max.)

Pwm_Divisor = 0x00 ... 0xFF

Pwm_Duty = 0x000 ... 0x3FF **Pwm_Duty = 0, PWM output is disabled (output 0)**

PWM — Control Values 14.7456 Mhz clock

PWM Period = (Pwm_Divisor + 1) / 3686400

PWM Duty Period = (Pwm_Duty) / 14745600

Duty_Resolution = log (14745600/ Fpwm) / log (2)

PWM Duty Cycle % = PWM Duty Period / PWM Period

if (PWM Duty Period > PWM Period) then PWM Duty Cycle = 100%

Pwm_Divisor	PWM Freq	Duty_Resolution
0xFF (255)	14400 Hz	10 bits* (see note)
0xFE (254)	14456 Hz	10 bits
0x5B (91)	40069 Hz	8 bits
0x00 (0)	3686400 Hz	2 bits

* **Note:** Pwm_Divisor 0xFF cannot achieve complete 100% duty cycle. Use Pwm_Divisor 0xFE if 100% duty cycle is required.

Example PWM Commands

- All numeric data is represent as ASCII Hexadecimal integers
- The symbol ↵ equates to a carriage return (decimal 13, hex 0x0D)

Host Command	Module Response	Action
P0000↵	P↵	PWM off Any duty cycle of 0 disables PWM output
P4801F↵	P↵	PWM frequency = 50499 Hz PWM duty = 10.6%
PFE3FF↵	P↵	PWM frequency = 14456 Hz PWM duty = 100%
PFE1FE↵	P↵	PWM frequency = 14456 Hz PWM duty = 50%

Analog I/O Technical Information:

Characteristic	Value
A/D Converter	Linear Tech LTC1861 ± 1.5 LSB
Linearity Error	± 0.012% (± 1 LSB)
Gain Error	± 20 mv
Offset Error	± 5 mv
Temperature Drift	100 ppm/°C (max.)
Max Input Voltage	5V
D/A Converter	Liner Tech LTC1448
Offset Error	± 10 mv

Sampling Analog Voltage Inputs

By far the most common configuration of the **232M200 Series** I/O modules is to sample voltage values. Analog voltage levels are converted to integer digital values using the Linear Technologies LTC1861 A/D (Analog/Digital) chip. The input voltage range is determined by the reference voltage.

There is one analog sample type: **Unipolar**

The A/D sampling type results in a 12 bit binary integer value.

Unipolar Analog Sampling

Unipolar analog sampling span is from ground (GND) to voltage reference (Vref). **Only positive voltages are sampled in unipolar mode.** The unipolar sample is represented as an unsigned integer as follows:

Unipolar voltages: 0V ... +Vref

Voltage Conversion

The Analog conversion value obtained from the **232M200 Series** module is represented as an unsigned integer value.

Vref = 5.000 standard

Unipolar Voltage Conversion Formula

Volts [unipolar] = ADC_Sample * (5.000/4096)

Volts [unipolar] = ADC_Sample * 0.0012207

Analog Outputs

Volts [output] = DA_Value * (5.000/4096)

Volts [output] = DA_Value * 0.0012207

Sampling Current (4-20 ma) Inputs

Many devices output a current value instead of a voltage value. The secret to obtaining current readings is a 250 ohm resistor. Placing a 250 ohm resistor to ground on a 4-20 ma. current input will create a voltage potential of 1V to 5V.

If we remember Ohm's law: $E = I * R$

R = 250 ohms
 I = .004 to .020 amps (4-20 ma.)
 E = 1.0V to 5.0V

Obtaining current readings is a three step process:

1. Perform analog Unipolar sample
2. Convert unipolar sample to volts
3. Convert voltage to amps

The following formula will convert the raw analog sample reading to a current value.

$$\text{Current} = (\text{ADC_Sample} * (5.000/4096)) / 250$$

Obtaining accurate Analog samples

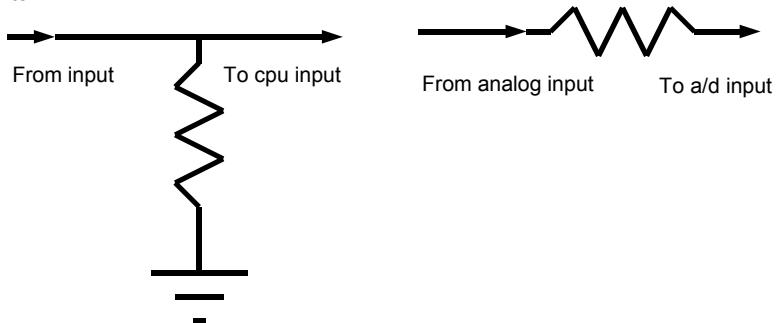
Please keep the following points in mind when attempting to obtain accurate samples.

- Avoid high impedance analog signal sources!
- Watch out for UPS systems! They create loads of EMI/EMF noise.
- Keep the analog signal source as close to the ADC-x module as possible.
- Keep transformers far away from the **232M200 Series** module.
- Use good wiring practices, especially in regards to ground connections.
- RS-232 interface can generate approx. 2 mv noise.

Resistors for Analog and Digital I/O

The digital I/O points have a 100K Ω resistor to ground to prevent floating inputs.

The analog inputs have a 10 Ω resistor in series to afford some protection to the A to D converter.



**Digital & Analog I/O Port Pin outs
And Hex Conversion Chart**

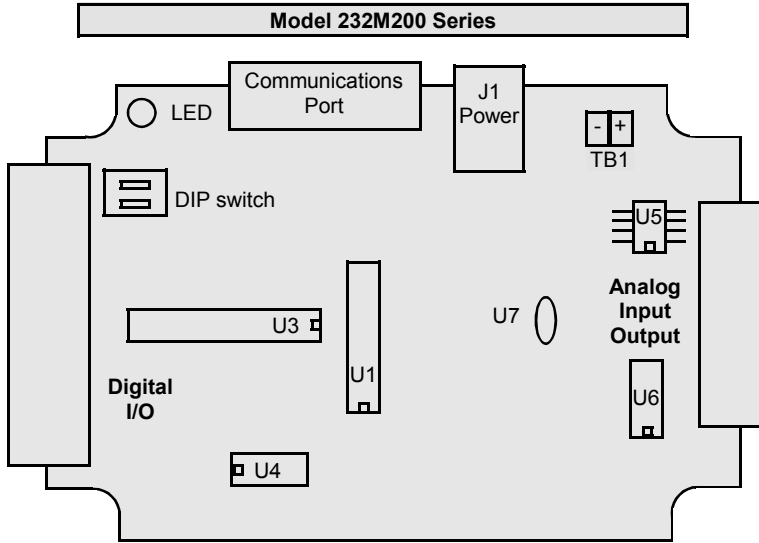
EXAMPLE HEX CONVERSION															
X				X				Y				Y			

BITS	1	1	0	0	1	0	0	0	1	0	1	1	0	1	1	1
HEX	C				8				B				7			

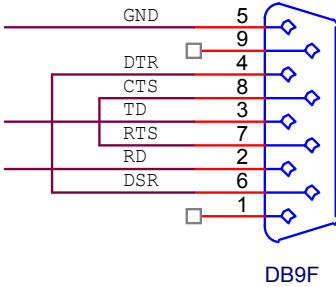
Analog I/O	
DB15 Pins	Description
1	N/A
2	N/A
3	N/A
4	N/A
5	N/A
6	N/A
7	ANALOG IN CHANNEL 1
8	ANALOG IN CHANNEL 0
9	GND
10	+ V UNREG
11	+ 5VDC REG
12	N/A
13	V REFERENCE
14	ANALOG OUT B
15	ANALOG OUT A

Digital I/O	
DB25 Pins	Description
1	Port 2 Bit 0
2	Port 2 Bit 1
3	Port 2 Bit 2
4	Port 2 Bit 3
5	Port 2 Bit 4
6	Port 2 Bit 5
7	Port 2 Bit 6
8	Port 2 Bit 7
9	PWM output
10	N/A
11	+V Unreg
12	+5Vdc
13	GND
14	N/A
15	N/A
16	N/A
17	N/A
18	N/A
19	N/A
20	N/A
21	N/A
22	Pulse Counter Input
23	N/A
24	+5Vdc
25	GND

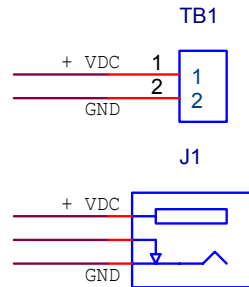
PORT 1										PORT 2									
X					X					Y					Y				
H E X V A L U E	BIT VALUE				H E X V A L U E	BIT VALUE				H E X V A L U E	BIT VALUE				H E X V A L U E	BIT VALUE			
	7	6	5	4		3	2	1	0		7	6	5	4		3	2	1	0
0	0	0	0	0	0	0	0	0	0	0	0	0	0	0	0	0	0	0	0
1	0	0	0	1	1	0	0	0	1	1	0	0	0	1	1	0	0	0	1
2	0	0	1	0	2	0	0	1	0	2	0	0	1	0	2	0	0	1	0
3	0	0	1	1	3	0	0	1	1	3	0	0	1	1	3	0	0	1	1
4	0	1	0	0	4	0	1	0	0	4	0	1	0	0	4	0	1	0	0
5	0	1	0	1	5	0	1	0	1	5	0	1	0	1	5	0	1	0	1
6	0	1	1	0	6	0	1	1	0	6	0	1	1	0	6	0	1	1	0
7	0	1	1	1	7	0	1	1	1	7	0	1	1	1	7	0	1	1	1
8	1	0	0	0	8	1	0	0	0	8	1	0	0	0	8	1	0	0	0
9	1	0	0	1	9	1	0	0	1	9	1	0	0	1	9	1	0	0	1
A	1	0	1	0	A	1	0	1	0	A	1	0	1	0	A	1	0	1	0
B	1	0	1	1	B	1	0	1	1	B	1	0	1	1	B	1	0	1	1
C	1	1	0	0	C	1	1	0	0	C	1	1	0	0	C	1	1	0	0
D	1	1	0	1	D	1	1	0	1	D	1	1	0	1	D	1	1	0	1
E	1	1	1	0	E	1	1	1	0	E	1	1	1	0	E	1	1	1	0
F	1	1	1	1	F	1	1	1	1	F	1	1	1	1	F	1	1	1	1



COMMUNICATION PORT ON BOARD WIRING



POWER CONNECTIONS ON BOARD WIRING



Power 2.5mm

Baud Rate Switch Settings		
SW1	SW2	Baud Rate
OFF	OFF	9600 baud
ON	OFF	19200 baud
OFF	ON	57600 baud
ON	ON	115200 baud (factory default)

Integrity Instruments 232M200 Series User Manual

IC Description (Position and type is the same for all sub-models)

IC	232M200 I/O Module
U1	RS-232 driver [16 pin DIP]
U3	PIC16C63A MPU [28 pin DIP]
U4	25C040 EEPROM [8 pin DIP]
U5	LTC1861 A to D [8 pin SOIC]
U6	LTC1448 D to A [8 pin DIP]
U7	LM4040AIZ-5.0 [TO-92] 5 Vdc 0.1% Voltage Reference
U8	7805 Voltage Regulator

LED Operation

Blinking Yellow	[1 per Second]	Unit functioning correctly - idle
Blinking Yellow	[Rapid or Steady]	Unit sending/receiving serial data
No LED		Unit is not functioning

Power Supply

7.5-15.0 Vdc approx. 50 ma. nominal power (we suggest our PS9J a 9VDC 400 ma un-regulated power supply)

RS-232 Cabling

The RS-232 interface uses a "3 wire" RS-232 connection. That is to say only three wires are connected between the I/O Module and the Host PC: **TxD**, **RxD** and **GND**.

RS-232 Flow Control

The Integrity Instruments modules **do not support hardware or Xon/Xoff flow control**.

Peripheral Add-On Modules

AE-8CH	8 channel analog connection board
ASC-2CH	2 channel signal conditioner
DB15TSM	DB15 terminal strip (for analog connector)
DB25TSM	DB25 terminal strip (for digital connector)
EXP-x	Digital Interface board

Model: AE-8CH Analog Connection Board

Jumper configurable analog inputs:

- 1) 4-20 ma inputs
- 2) +/- 10 Vdc inputs
- 3) Solid state temperature probes

Handy terminal strip for all analog connections and voltages. MTA .100 jacks are also available for solid state temperature probes available from Integrity Instruments.

**Model: ASC-2CH Signal Conditioning Board**

2 channels of precision instrumentation amplifiers.
Gains of 1, 10, 100, 1000

Handy terminal strip for all analog connections and voltages.

**Models: DB15TSM and DB25TSM DB Terminal Strip**

Terminal strip boards to conveniently connect to DB15 and DB25 connectors.

Models: EXP-x Digital Interface Board

The **EXP-X** unit provides for digital interface and signal conditioning via industry standard opto-isolated I/O modules such as Opto-22. Each unit has 4 I/O points with large easy to use terminal screws. If more I/O points are required, simply plug in another unit up to 16 total I/O points. **Opto isolated modules:** 90V-140V AC input, 12V-140V AC output, 3.3V-32V DC input, 3V-60V DC output.

WARRANTY

Integrity Instruments warranties all products against defective workmanship and components for the life of the unit. Integrity Instruments agrees to repair or replace, at it's sole discretion, a defective product if returned to Integrity Instruments with proof of purchase. Products that have been mis-used, improperly applied, or subject to adverse operating conditions fall beyond the realm of defective workmanship and are not covered by this warranty.

Copyright © 2000-2003, Integrity Instruments, Inc.

All trademarks and/or registered trademarks are the property of their respective owners.

Revision: January 3, 2005 - v3.0

This page intentionally left blank