

T-Octopus F 200/400/600/650
IP Netpackage
T-Octopus F 900
T-Octophon F display module IP
Operating Instructions





About this User Manual

This User Manual describes the use of the T-Octophon F display module IP on the T-Octophon F31/41 IP / T-Octophon F41 IP SL.

All functions you can use with the T-Octophon F display module IP are described. You may find that some functions you wish to use are not available on your T-Octophon F display module IP. This may be due to one of the following reasons:

- The function has not been configured for your device - please contact your service personnel.
- Your communication platform does not support this function - please contact your service personnel.

Important Notes

	Never operate the telephone in an environment where there is a risk of explosion.
	Never open the telephone set or an add-on unit. If any problems arise, contact your service personnel.
	Only use original accessories. The use of other manufacturers' accessories may be dangerous and will render the warranty and approval null and void.

The information provided in this document contains merely general descriptions or characteristics of performance which in case of actual use do not always apply as described or which may change as a result of further development of the products.

An obligation to provide the respective characteristics shall only exist if expressly agreed in the terms of contract.

The device must not come into contact with abrasive liquids or liquids which are liable to discolor it, such as tea, coffee, fruit juices or soft drinks.

Labels



The CE symbol certifies compliance of this equipment with the EU and UL directives.



This device has been manufactured in accordance under a certified environmental management system (ISO 14001). This process ensures that energy consumption and the use of primary raw materials are kept to a minimum, thus reducing waste production.

Content

About this User Manual 2

Important Notes	2
Labels	2

Basics of operation 5

Operation range of T-Octophon F display module IP	5
Guidance for reading the operating instructions	6
Instructions for intuitive operation	6
Display with touch screen functionality	7
Overview	7
Operating the display	7
Start page	8
System and application bar	9
Dialog messages	10
Display keyboard	10
Screen Lock	12

Make a call 13

Dial from personal telephone directory	13
Dial from company telephone directory	15
Speed Dial	16
Voice Dialling	17

Use of PC mouse and keyboard 18

Prerequisites	18
Activating the user interface	18
Operation	20

Applications..... 21

Personal telephone directory	21
Set up entry	22
Adding VoiceDial to an entry	25
View entry	26
Change entry	27
Delete entry	27
Delete all entries	27
Transferring the personal telephone directory	28
Company telephone directory	36
Search results	38
Using Java midlets	39
General operation	39
Example Application: Speed Dial List	42
WAP browser	46
Load any pages	47
Favorites	47
Configuration	49
Display	50
Contrast, Illumination and Calibration of the Display	51
Screen Lock	52
Change Password	53
Voice dialling	54
Online help	54

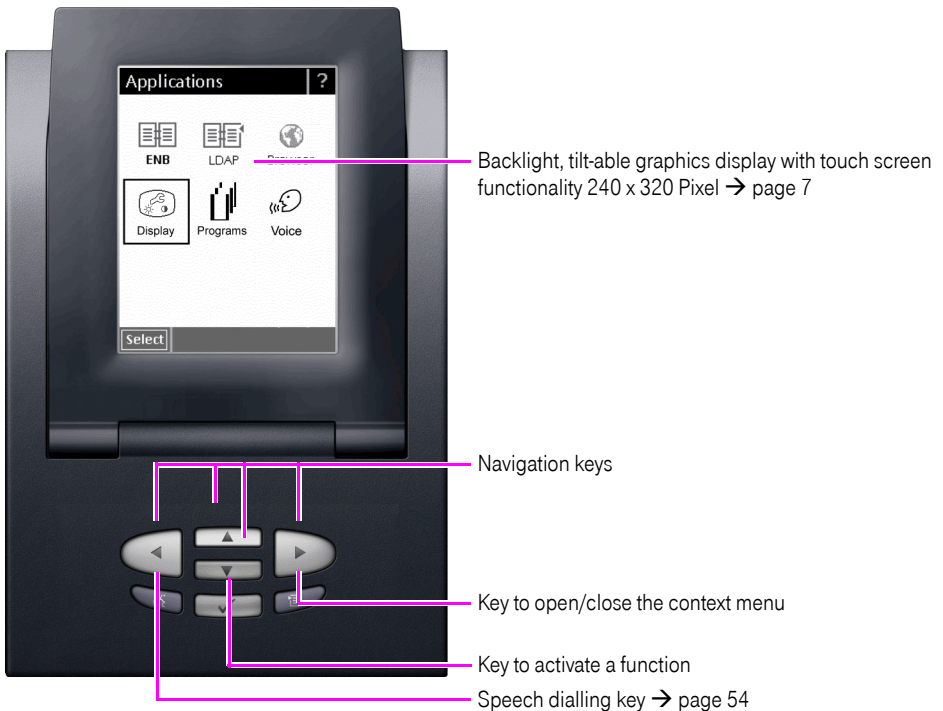
Index..... 55

Basics of operation

The T-Octophon F display module IP is used as an add-on with the T-Octophon F31/41 IP / T-Octophon F41 IP SL. On one hand, it supports you while telephoning with the T-Octophon telephone. On the other, it offers several other functions that you can use intuitively and effectively to perform different tasks.

The functions described here are related exclusively to the operation of the T-Octophon F display module IP. You will find the description of the T-Octophon telephone functions in the operating instructions of the according telephones.

Operation range of T-Octophon F display module IP



Different applications with graphical representations such as for instance, the personal telephone directory, a WAP browser etc., assist you in your work. You can work with several applications simultaneously (multi-tasking), without having to quit individual interfaces.

You will find a precise description of the individual applications further down in the document.

Guidance for reading the operating instructions

The operational steps of the gadget are represented graphically in a logical sequence in the left column. The representations have the following meanings:



Lift handset.



Replace handset.



Conduct conversation.



Press key in the T-Octophon F display module IP.




Click on the symbol in the display ("Display key") of the T-Octophon F display module IP.

Instructions for intuitive operation

In many situations, the context-sensitive interface offers you a number of options for performing the same operation.

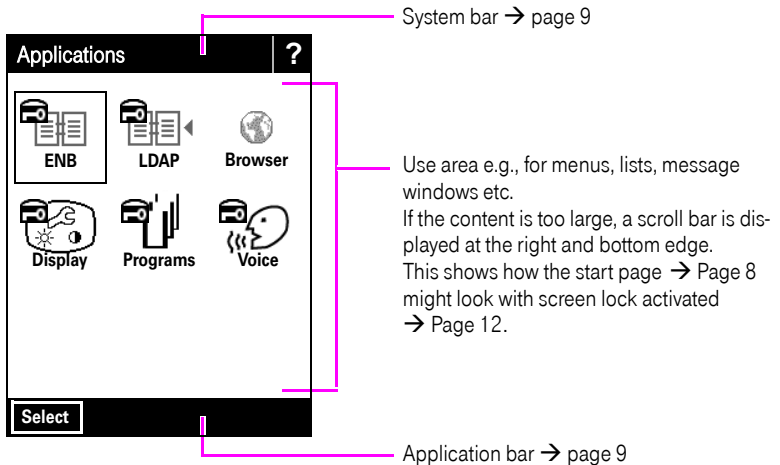
For reasons of transparency, all the possibilities have not always been described in this document.

You should therefore get to know the context menu in particular (e.g., the context menu can be invoked by pressing the  key).

Display with touch screen functionality

Besides the navigation and selection keys → page 5, you can operate the T-Octophon F display module IP with the help of the large graphics display supporting touch screen functionality.


Overview



Operating the display

A plastic pen was delivered along with your T-Octophon F display module IP. You can select functions on the display by pressing the tip of the pen lightly on the display surface ("click") or move graphics content such as scroll bars ("pull").


Alternatively, you can also operate the display with other objects similar to the pen that do not damage the display surface. It is also possible to operate the display with your finger (finger nail).


-
- 

You can configure screen locking (→ Page 12) on your T-Octophon F display module IP. Once this function is activated, a lock icon will be displayed for every password-protected application. To start such applications, you must enter a password.
You can choose the password yourself → Page 53.
-

Start page



There are a number of different symbols on the start page (these can be invoked by pressing ) each of which represents an application (example: the "Personal Telephone Directory" application).

You can select an application with the help of the navigation keys → page 5; The selected symbol is then displayed in a frame. The desired application is started by pressing the  key or by double-clicking on the image.

When an application has been launched (it is "active"), the name of the application on the start page appears in bold letters.

Symbols for starting the applications



The extensive local database of your T-Octophon F display module IP, in which it is possible to store up to 640 entries. It can be configured individually, and it supports data exchange between the PC and the T-Octophon → page 21.



Locate a partner in your company telephone directory and dial his number directly. The installed LDAP interface makes it possible → page 36.



On the one hand, you can access information provided by your company through the WAP browser. On the other, if there is a WAN connection, you can even use the WAP Internet offers → page 46.



You can define the configurations for the display (Brightness, Contrast, Password protection) of your T-Octophon F display module IP → page 50 here.



You can use any programs which have been installed in the T-Octophon F display module IP → Page 39.
For an example application, see the description of "SpeedDialApplet" (speed dial list) on → Page 42.



You can record a maximum of 20 VoiceDial entries in the ENB. Once an entry is recorded you can dial the number by saying the name → page 54.

System and application bar

Recurring information and display keys appear in the system bar and the application bar of the display → page 7 of your T-Octophon F display module IP in different situations. On being clicked, the display keys execute standard functions.

In the left area of the system bar:

The concerned current application/function is displayed here.

In the right area of the system bar:



Opens the display keyboard for entering the characters → page 10.



Takes the user from the current application to the start page without quitting the application → page 8.



Invokes the Help function → page 54.

In the left area of the application bar:

Display keys with different text content are displayed here. They execute application-dependent functions.

If several alternatives are offered, the selected display key is represented in a bright hue.

Examples:



Active display key (framed in bright hue):

The function is executed on clicking (or pressing the key).



Neutral display key (no frame).

In the right area of the application bar:



Quits the current application.

Modifications that have not been saved are lost.



Opens / closes the context menu with useful functions suitable for the current application situation (The key offers more extensive functions).

Dialog messages

In different situations, the T-Octophon F display module IP expects the user to confirm an information item in a dialog window. Depending on the content, the buttons "OK", "Yes", "No" and "Cancel" are available for use.



Answer the **question** by clicking on one of the two buttons.



Confirm the **warning message**. It appears for instance, as a safety query when you delete telephone directory entries.



An **error** has taken place. Try to resolve the error described in the message. If you have questions, please contact the competent authority or staff.



Read the **Info message**. It appears for instance, during a data transmission operation.

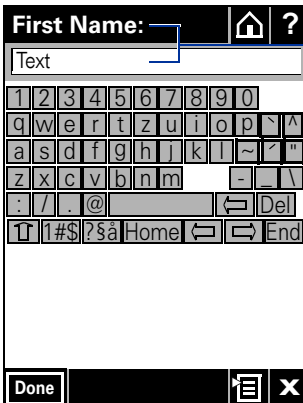
Display keyboard

You can invoke a keyboard in the display to input text, numbers and special characters.

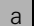
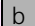


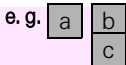
Open the display keyboard.

The keyboard is displayed at the display:



Field name and input field in an application, e.g. "ENB".

e. g.   Enter alphanumeric characters and symbols.

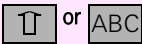


Switch to diacritical marks.



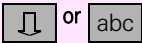
The option for entering characters, such as "è", is active when the relevant softkeys appear on the touchscreen (e.g. "e" is displayed as "è") and by the inversion of the switching softkey (softkey is black).

In addition to the alphabetical softkeys, the following softkeys are available:



or

Shift to upper case.



or

Shift to lower case.



Shift to the first alternative key assignment (e.g. numeric characters, punctuation marks, brackets).



Shift to the second alternative key assignment (e.g. currency symbols).



Place the cursor at the beginning of the line.



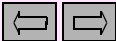
Delete characters to the left of the cursor one by one.



Delete characters to the right of the cursor one by one.



Move the cursor to the end of the line.



Move the cursor to the left/right.



Hide the touchscreen keypad and accept the new or modified text in the input field.

Screen Lock

You can configure screen locking as a protection against unauthorized use of your device. You can set a period after which the screen will be locked following the last use. It can only be unlocked by entering the personal password.



The device is supplied with the screen lock switched off. It becomes active only after you have configured it.

Switch on and configure screen lock → Page 52.

Change Password → Page 53.

Operation with active screen lock

Click on the symbol on the start page for the application you want to start (example: ENB). The lock icon shows that this application is protected against unauthorized access.



Open the display keyboard → Page 10 and enter the unlock password (Default: **12345678**).



Confirm your entry..



Accept password entry.

The desired application is displayed.

Step by Step

Make a call

Dial from personal telephone directory



You will find a detailed description of the application interface from → page 21.

Select entry

Precondition: A minimum of one entry must exist in the personal telephone directory. To set up entries, see → page 22.

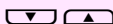
Click on the symbol in the start page.
The personal telephone directory is opened.



or

Click on the desired entry.

Specify the initial letters of a saved name.
The next matching entry is displayed in the list within a selection frame. You limit the selection with the addition of each letter.



If necessary, press keys for browsing the next/previous entry.

Dial a standard telephone number:

Precondition: A telephone number of the marked name has been defined as the standard telephone number → page 24. Otherwise dial the target telephone number (see below).

OK or **Dial**

Dial the telephone number.

Step by Step

Dial selected telephone number:



Select a desired telephone number if you wish to dial a number that is not the standard telephone number.

Precondition: One entry in the telephone directory list is marked.

Click on the menu option.

 View

or



Open the context menu and select "View".

The "Numbers" register is opened

Business: 4989123456

Click on the desired entry.

or



Press to browse through the next/previous entry.

OK

or

Dial

Dial the marked telephone number.

or



Open the context menu and select "Dial".



The assignment of the standard telephone number is not changed.

Step by Step

Dial from company telephone directory



You will find a detailed description of the application interface from → page 36.

Precondition: You have access through a LAN to a telephone directory covering the whole company.

Click on the symbol on the start page.
The company telephone directory is opened.



Specify the initial letters of a name.



If necessary, move the cursor.

Execute the search.

The display changes to a list of search results.
The list displays all the entries that match the search criteria.



Select the desired entry.

Dial the telephone number.


Extended search

Extended search enables you to perform search operations according to different criteria of an entry e.g., profession or department.

For this, click on the "Advanced Search" register and enter the initial letters of the known criteria. The remaining process sequence is as described above.

Step by Step

Speed Dial

 You will find a detailed description of the application interface from → Page 42.

Precondition: The midlet "Speed Dial Applet" and there is at least one entry in the Speed dial list.
Create new entries, see → Page 43.

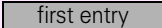


Double-click on the symbol on the start page → Page 8 to start the application.

Select "Speed Dial Applet".

Start program.

Make sure that Edit mode is switched off ("Edit Mode" is not indicated in the title bar).




Dialling starts immediately as soon as a field is selected.

Step by Step

Voice Dialling

Dial numbers by just saying a name.

Precondition: ENB entries must have added VoiceDial → page 25.

 Observe the instructions shown in the display while dialling!

Speaker



or



Lift handset.

Press key.

Press VoiceDial key in Display Module.

The display changes to Voice Recognition mode.



Wait for signal tone.



Say the name of the person you want to call.

The number will be dialled. The display changes to the start page.

VoiceDial unsuccessful

If the name is spoken with a different intonation or more softly than in the recording, a message will appear in the display telling you to try again.

Try Again



Wait for signal tone.



Repeat the name of the person you wish to call.

The number will be dialled. The display changes to the start page.

Step by Step

Use of PC mouse and keyboard

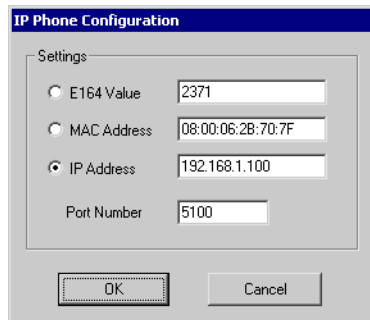
You can enter characters or move around in the T-Octophon F display module IP menu using the mouse and the keyboard of your PC via a special user interface.

Prerequisites

- The PC and the T-Octophon F display module IP must be connected to the same LAN and configured correctly. If you have any queries concerning connection or configuration, please consult your service personnel).
- The program "PCUserClient.exe" must be installed on your PC. You can download this program from the Internet at www.siemens.com/hipath.

Activating the user interface

After starting the program "PCUserClient.exe" on your PC, a dialogue box will come up with which you can set up a connection to the T-Octophon F display module IP via the LAN.



The screenshot shows a dialog box titled "IP Phone Configuration". Inside, there is a "Settings" section with four radio buttons and their corresponding input fields:

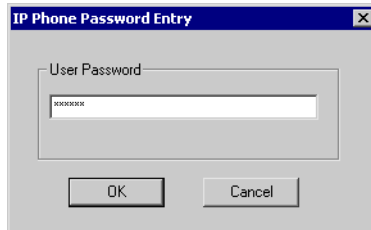
- E164 Value: 2371
- MAC Address: 08:00:06:2B:70:7F
- IP Address: 192.168.1.100
- Port Number: 5100

At the bottom of the dialog are "OK" and "Cancel" buttons.

Enter one of the required values or addresses, e.g. the IP address of the T-Octophon F display module IP (obtainable from your service personnel) and click "OK".

Step by Step

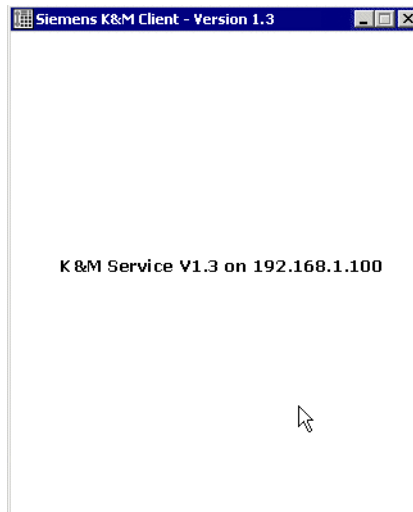
A dialogue box will come up for you to enter your user password.



If necessary **1** **2** **3**

Enter your personal password if you have one (standard password: 123456) and click "OK".

The "Siemens K&M Client" orientation window for the mouse pointer will come up.



Step by Step

Operation

The following functions are available:

- Input from the PC keyboard will be transferred to the T-Octophon F display module IP if the client window is active (program in the "foreground").
- The mouse pointer of the PC can be seen in the display of the T-Octophon F display module IP when the mouse pointer moves in the client window.

This functionality is comparable to operation using a plastic pen directly on the display, see → Page 7.

Right clicking on the client window will fix the mouse pointer; e.g. in order to work temporarily with other PC applications. To unfix it, right click on the window again.



If the LAN connection to the T-Octophon F display module IP is lost during the runtime of the client window, a message will come up and the program will be closed.

To continue operation from a PC after reestablishing the connection, you will need to restart the "PCUserClient.exe" program.

Quitting the client window closes the "PCUserClient.exe" program.

Step by Step

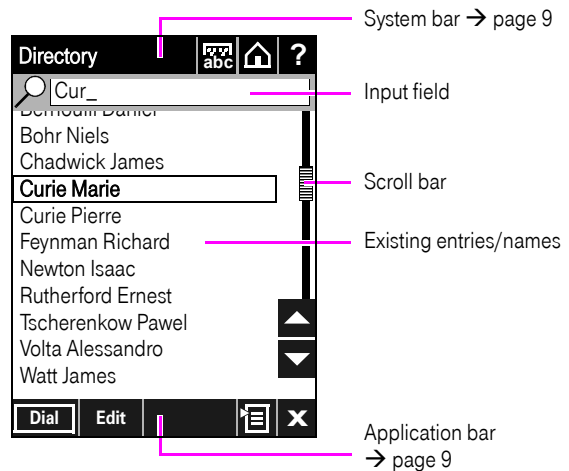
Applications

Personal telephone directory

With the help of this application, you can store telephone numbers and additional information about persons locally, e.g., addresses and fax numbers of contact partners (up to 640 entries). You can search entries and dial the stored telephone numbers.



Double-click on the symbol on the start page → page 8 to start the application.



Open the display keyboard to enter the characters.

When you enter the first letter of a name, the list automatically displays the first matching entry.

Dial

Dial the number in the entry that is defined as the standard telephone number → page 24.

View

Display detailed information about the entry.

Step by Step



In this view, the context menu offers the following:

- **Edit:** Opens the entry in the editor → page 27.
- **New Entry:** Opens the editor for setting up a new entry → page 22.
- **Delete Entry:** Deletes the currently selected entry → page 27.
- **Delete All:** Deletes all entries in the personal telephone directory → page 27.
- **Import:** Imports data from the PC into the T-Octophon F display module IP → page 28.
- **Export:** Exports (backs up) data from the T-Octophon F display module IP to a PC → page 29.
- **VoiceDial-Add:** Add VoiceDial → page 25

Set up entry



Double-click on the symbol.

The telephone directory list → page 21 15 is displayed.



open the context menu and select "New Entry" to set up a new entry.

The "Personal Data" register appears. The first field is activated for processing.

System bar → page 9

"Name" register

"Numbers" register

"Notes" register

Application bar → page 9

It is possible to store up to 640 entries.

Step by Step

"Name" register

Enter the personal data such as name and company here.

Active input field



Open the display keyboard to input the letters.



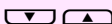
Browse with the keys to move from line to line.



Where necessary, use keys to move the cursor to the left/right.



Confirm the entry. You are returned to the telephone directory list. You can also populate all the registers first and then confirm the data.



Browse with the keys to reach the next/previous register.

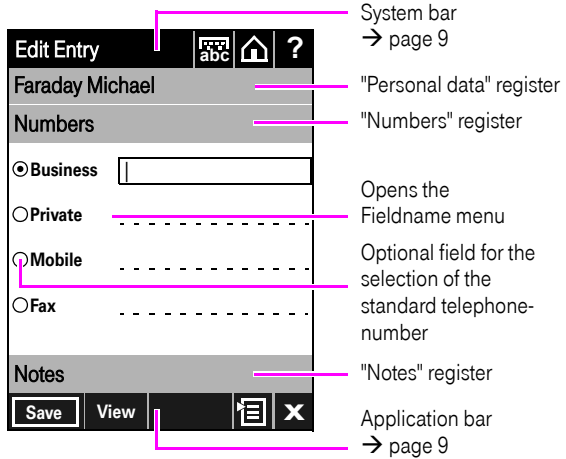


Aborts the creation of a new entry.

Step by Step

"Numbers" register

Enter the telephone number of the person here.



- **Where appropriate**, select the optional field to define the corresponding telephone number as the standard telephone number. This number is used while dialling from the list view.

Operation sequence as in the "Personal Data" → page 23 register.



Where appropriate, confirm the entry. You are returned to the telephone directory list.

"Notes" register

Enter possible additional information on the person in the "Notes" register.

Operation sequence as in the "Personal Data" → page 23 register.



Where appropriate, confirm the entry. You are returned to the telephone directory list

Step by Step

Adding VoiceDial to an entry

You can add VoiceDial to a maximum of 20 ENB entries.

Recording a VoiceDial entry



For reliable voice recognition, the intonation, speed and volume of the speaker are important. Use long, clear names, and avoid any loud background noises during recording.



Open the ENB, select an existing entry, or create a new entry → page 22.



Open the context menu and select „VoiceDial-Add“.



Observe the instructions shown in the display while dialling!



Lift handset or press loudspeaker key.



Press display key.



Wait for signal tone.



Say the name you want to record.



Press display key.



Wait for signal tone.



Repeat the name you want to record.



Press display key.

The recording is finished.



This symbol will appear in front of the entry in the telephone directory.

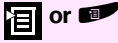
Instead of "VoiceDial-Add", the context menu will now offer the following menu items for this entry:

- **VoiceDial-Play:** play entry → page 26
- **VoiceDial-Replace:** replace entry → page 26
- **VoiceDial-Remove:** remove entry → page 26

Step by Step

Playing a VoiceDial entry

Precondition: An ENB entry with a VoiceDial recording is marked.



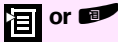
Open context menu and select "VoiceDial-Play".



The recording belonging to the entry will be played.

Replacing a VoiceDial entry

Precondition: An ENB entry with a VoiceDial recording is marked.



Open context menu and select "VoiceDial-Replace".

The display changes to "Voice Training" mode and you can replace the existing recording.



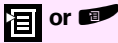
Press display key to abort the new recording and keep the existing recording.

or



Removing a VoiceDial entry

Precondition: An ENB entry with a VoiceDial recording is marked.



Open context menu and select "VoiceDial-Remove".

The recording will be deleted **without confirmation**. The entry in the telephone directory will be kept.

View entry



Double click on the symbol.
The telephone directory list → page 21 appears.

Select the entry (by inputting letters or by scrolling).



Click on the display key to display detailed information on this entry.

Step by Step

Change entry



Double click on the symbol.
The telephone directory list → page 21 is displayed.

Select the entry (by entering letters or by scrolling).



Open the context menu and select "Edit" to modify the selected entry.
Remaining process sequence as in "Set up entry" → page 22.

Delete entry



Double-click on the symbol.
The telephone directory list → page 21 appears.

Select the entry (by entering letters or by scrolling).




Open the context menu and select "Delete Entry" to delete the selected entry.



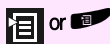
Confirm the warning message to delete the entry.

Delete all entries

 If you have not backed up the entries yet → page 29, all the data in the personal telephone directory will be permanently lost and cannot be restored again.



Double-click on the symbol.
The telephone directory list → page 21 appears.



Open the context menu and select "Delete All" to delete all the entries.



Confirm the warning message to delete all the entries.

Step by Step

Transferring the personal telephone directory

The system supports the function of data import so that you can make use of extensive telephone directory data e.g., in the Microsoft Outlook address book. Moreover, you can also export the data in your personal telephone book and use it elsewhere, or use the data for backup purposes.

Short description of how to export contact data from Outlook 2000 → page 30.

In the same way you can utilize the data saved in the telephone directories of your T-Octophon F 50 and Octophon 28 by using the export features provided for these devices.

Importing data

Precondition: There is an import file in "CSV" format on a correctly configured FTP server.



Double-click on the symbol.
The telephone directory list → page 21 appears.



Open the context menu and select "Import". The "Import 1/2" dialog along with the "FTP Parameters" register is opened.



If necessary, enter the required parameters of the FTP server, if this has not already been done earlier (ask your service personnel):

- FTP Server
- FTP User ID
- FTP User Password
- FTP User Account Name

After the transferred data has been entered once, it appears as standard entries during re-import.



The "Import 2/2" dialog with the "File Details" register is opened.



Enter the filename and the path of the import file.



Start the data transfer.

If the fieldnames of the import file match the corresponding fieldnames of the personal telephone directory, the file is imported and converted automatically.

After the successful data transfer, the file is opened as the current telephone directory list.

Step by Step



If necessary



Exporting data

Prerequisite: A correctly configured FTP server is available.

Double click on the symbol.

The telephone directory list → page 21 appears.

Open the context menu and select "Export".

The "Export 1/2" dialog with the "FTP Parameters" register opens.

Enter the required parameters of the FTP server if this has not already been done (ask your service personnel):

- FTP Server
- FTP User ID
- FTP User Password
- FTP User Account Name



After the transferred data has been entered once, it appears as standard entries during re-export.



The "Export 2/2" dialog with the "File details" is opened.



Enter the filename and the path for the export operation.



Start the file transfer.

After the successful transfer, the display changes to the telephone directory list.

Step by Step

Preparation of Data: Export from Microsoft Outlook

You can import the contents of the "Kontakte" folder in Microsoft Outlook to the personal phone directory of your T-Octophon F display module IP.

In order to be able to import your contacts, the data must be in "CSV" (Comma Separated Values) format.

The process of exporting contact data into a CSV file is described here.

1. Open Microsoft Outlook (if not already open).
2. In the main "File" menu select menu item "Importieren/Exportieren...".
The Import/Export Assistant will appear:



3. Select the entry "Exportieren in eine Datei" from the list, and confirm with "Weiter >".

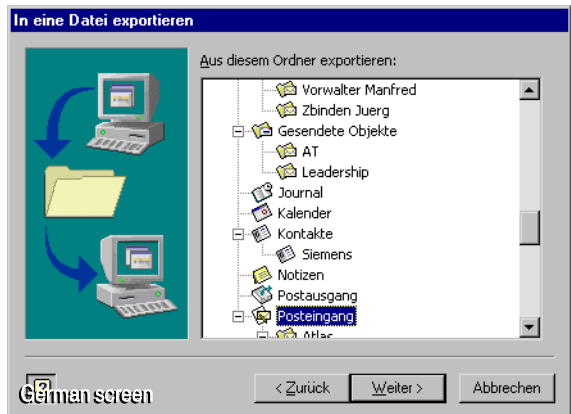
Step by Step

The following dialogue box will appear:



4. Select the entry "Kommagetrennte Werte (Windows)" from the list, and confirm with "Weiter >".

The following dialogue box will appear:



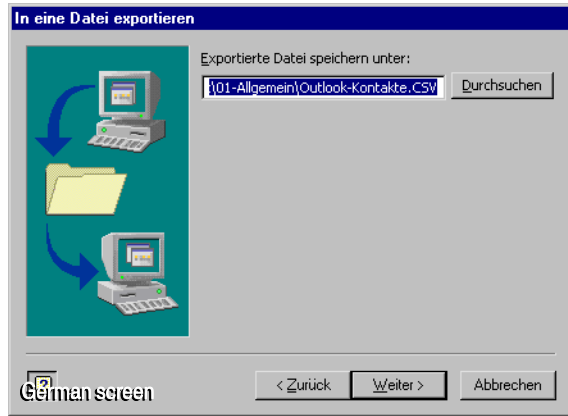
5. In the menu tree select the folder which you want to export, e. g. "Kontakte" and click "Weiter >" to confirm.



Subdirectories of the selected folder will not be exported with it automatically. If you want to export data from subdirectories, you must export these folders separately.

Step by Step

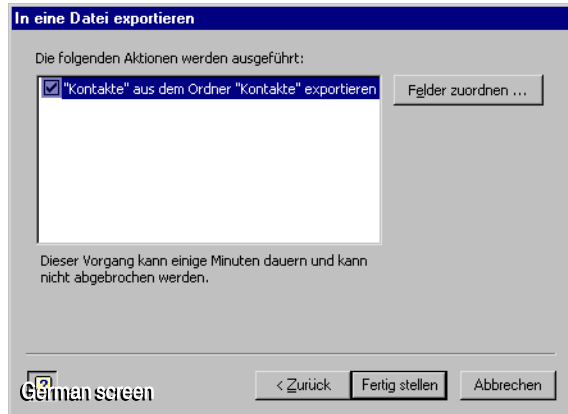
The following dialogue box will appear:



- 6. Make any necessary alterations to the path and the name of the CSV file. Change the path manually or click "Durchsuchen" to select the destination folder.

When the path is correct, click "Weiter >" to confirm.

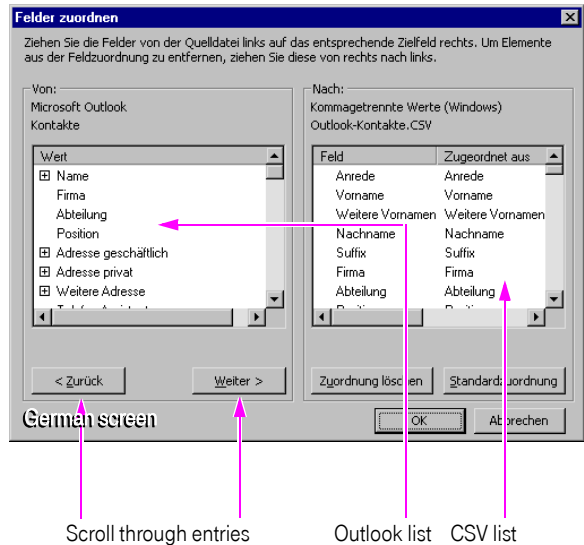
The following dialogue box will appear:



- 7. Click "Felder zuordnen ..." to configure the export format.

Step by Step

The following dialogue box will appear:



8. Click "Zuordnung löschen" to unassign the standard assignment.
9. Holding the mouse button down, drag the fields you want to transfer to the personal phone directory of your T-Octophon F display module IP from the Outlook window into the CSV window.

A maximum of 8 fields can be transferred to the personal directory, and fields 2 to 5 must be phone numbers. If more than 8 fields are exported, this will lead to errors in transferring the data. The order in the CSV window will be the order used in the personal directory.

Step by Step

The following table shows an example of the assignment structure in Microsoft Outlook and the corresponding structure in the personal directory.

<i>Item</i>	<i>Outlook-list</i>	<i>Personal directory</i>
1	Name	Name
2	First Name	First Name
3	Office (default)	Business
4	Private	Private
5	Mobile	Mobile
6	Fax No.	Fax

When you have transferred the desired fields, you can carry out changes in the CSV list as follows:



- You can change the term used to indicate a particular field in T-Octophon F display module IP. To do this, select an entry in the "Feld" column in the CSV window and click on the entry again. You can now change the term.
- You can correct the order of the entries. To do this, click on an entry in the "Feld" column in the CSV window and drag the entry up or down while holding the mouse button down.
- To delete an entry in the CSV window, select it and press the "Entf" button on your PC keyboard.

To make this clearer, the chart below shows the assignment of the data during export and the subsequent result in the personal directory of your T-Octophon F display module IP:

Step by Step

Feld German screen	Zugeordnet aus
Name	Nachname
First Name	Vorname
Business	Telefon geschäftlich ①
Private	Telefon privat ②
Mobile	Mobiletelefon ③
Fax	Fax geschäftlich ④
Address	Adresse geschäftlich
Address2	Adresse privat

CSV list



View Entry  

Faraday Michael

Numbers

Business	498912345677 ①
Private	498912345678 ②
Mobile	491721256789 ③
Fax	498912345677 ④

Notes

Display in T-Octophon F display module IP

If you are satisfied with the assignment, click "OK" and confirm with "Fertig stellen".

10. The CSV file is written.



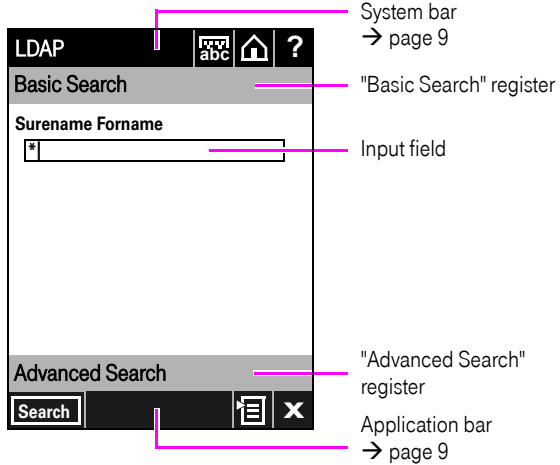
When this is completed, it means the data have been exported and a CSV file with your defaults has been created.


Step by Step

Company telephone directory

You can access your company-wide telephone directory (LDAP directory) with the help of this application, provided of course, that the telephone directory has been set up. Entries can be searched and used for dialling.

To start the application, double-click on the start → page 8.



 To be able to use the company telephone directory, this function must be set up correctly. Contact your service personnel.



Browse with these keys to switch between the two search options. As compared to "Basic Search", "Advanced Search" offers the possibility of performing search on the basis of other fields in the company telephone directory (max. 5).



Open the display keyboard to enter the letters. The "*" character is used in the input field as a wild card. Capital letter/small letter is not recognized.



Start the search. The search results are displayed → page 38.

Step by Step



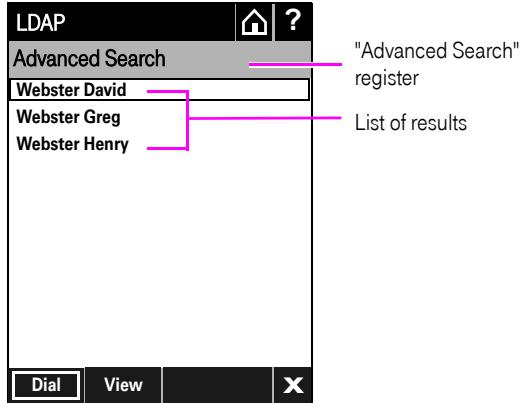
In this view, the context menu offers the following:

- **Search:** Starts the search operation.
- **New Search:** Clears the input field.
- **Server Settings:** Please contact the competent authority/specialized staff to configure the LDAP server.
- **LDAP Template:** Please contact the competent authority/specialized staff to configure the search parameters of the company telephone directory.
- **Keyboard:** Invoke the display keyboard → page 10.
- **Home:** Displays the start page → page 8. The application remains open in the background.
- **Help:** Invokes the Help function → page 54.
- **Exit LDAP:** Quits the application and displays the start page → page 8.

Step by Step

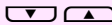
Search results

The results list contains one or more than one entry, of which the first entry is marked.



View entry in the LDAP viewer

▶ The LDAP viewer contains the "Details" and "Numbers" registers. The number of fields depends on the LDAP template (ask the competent authority/specialized staff).



Browse the results.



The LDAP viewer opens the marked entry in the "Details" register.

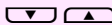


The LDAP viewer opens the marked entry in the "Numbers" register.



Abort the display and go back to the search dialog.

Dial entry from the LDAP viewer



Mark the desired telephone number.



Start dialling.

Step by Step

Using Java midlets

Java midlets are small programs that are executed locally in the T-Octophon F display module IP and which serve to provide different functions.

These may include applications with notepad, calculator or phone directory functions, for example.

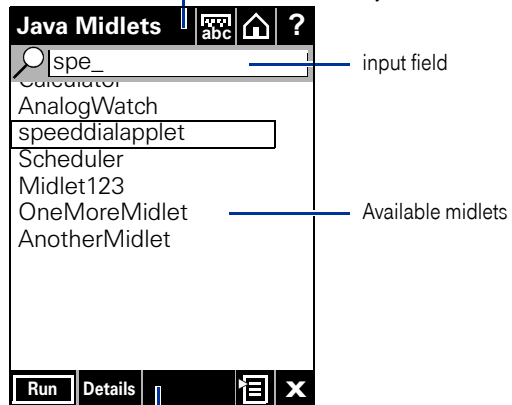
General operation

The application "Programs" is an interface which enables you to add additional functions to your T-Octophon F display module IP. The operation of this interface is always the same



Double-click on the symbol on the startpage → Page 8 to start the application.

System bar → Page 9



input field

Available midlets

Application bar
→ Page 9



Open the display keyboard to enter the letters.

When you enter the first letter of a midlet name, the list will automatically show the first midlet beginning with this letter.

Run

Start the Java environment. The "SpeedDialApplet" midlet will be loaded in the execute area.

Details

Information such as file size, version, etc., which is given for each midlet, will be displayed.

Step by Step



In this view, the context menu offers the following:

- **Delete Entry:** Deletes the selected midlet → Page 41.
- **Delete All:** Deletes all midlets in the list → Page 41.
- **Web Settings:** For setting the access parameters for the midlet download server → Page 41.
- **Add Midlet:** Adds a midlet by downloading → Page 41.

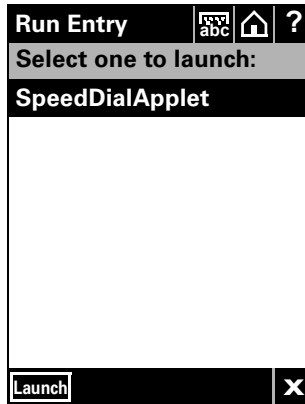


Abort display and close "Programs".

Starting the Java environment



The Java environment is started and the selected midlet is loaded in the execute area.



The following softkeys are available:



Start midlet.



Exit the Java environment (= VirtualMachine).

Execution of the current midlet is immediately suspended, for instance to let another midlet be loaded.

Subsequent operation depends on the midlet that has been started (example: "SpeedDialApplet" → Page 42).

Step by Step

**Delete midlet**

Open the context menu and select "Delete Entry".
The selected midlet is permanently deleted from the memory of the T-Octophon F display module IP.



The "SpeedDialApplet" midlet → Page 42 can not be deleted. If you want to upgrade this midlet please ask your service personnel.

**Delete all midlets**

Open the context menu and select "Delete All".
All midlets (except "SpeedDialApplet") are permanently deleted from the memory of the T-Octophon F display module IP.

**Setting the access parameters**

Open the display keyboard to enter characters.
Under "User Name" and "Password" enter the data required for accessing the download server.



Save entries.

**Install midlet**

Open the context menu and select "Add midlet".
The "Add Midlet" window will be opened:

- **File Details:** Gives details of the selected midlet.
- **File:** Select the desired midlet (file with the extension *.jrd).
- **Folder:** Select the folder for the midlet to be installed.

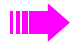


Add midlet.

Step by Step

Example Application: Speed Dial List

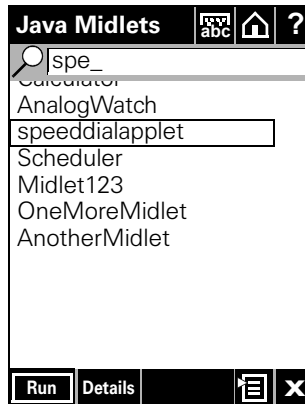
Installed in your T-Octophon F display module IP is an example application for creating and selecting speed dial entries (if not, please ask your service personnel).

 The midlet shown here can deviate from the version installed on your T-Octophon F display module IP.



Double-click on the symbol on the startpage → Page 8 to start the application.

There you will find a line with the "SpeedDialApplet" midlet. You will need to select it if there are also other items.



Start the Java environment.

The "SpeedDialApplet" midlet will be loaded in the execute area. You can now create entries → Page 43.



Shows details of the selected midlet.

Step by Step

Creating/changing an entry

First you will see the following display with all speed dial fields empty (condition as delivered).

Run Entry		abc	Home	?
SpeedDialApplet				
empty	empty			
empty	empty			
empty	empty			
empty	empty			
Previous	Next			
Exit	Edit			X

With "Next" and "Previous" you can go to four more pages, each with eight fields.

Exit
Edit

Goes to select menu of installed midlets → Page 42.

Change to Edit mode.

"Edit Mode" is indicated in the title bar.

empty

Create a new entry.

or

If entries have already been made:

Name 1

Select the name to edit the name or the number.

Run Entry		abc	Home	?
CreateSpeedDialEntry				
Text To Display:				
empty				
Number To Dial:				
Back	Menu			X

Step by Step



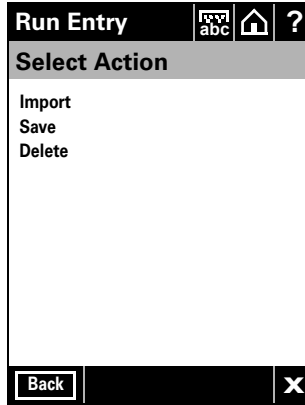
Open the display keyboard.
Under "Text To Display" enter a Name, which will displayed at the call number (max. 11 characters; enter characters → Page 10).



Under "Number To Dial" enter a dialable call number, which you would like to call by speed dial field.



Open the register "Select Action".

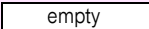


Save entries.

Import an entry from the Personal directory

Precondition: There are already entries in your Personal directory
→ Page 22.

Start the "SpeedDialApplet" midlet → Page 42 and activate the Edit Mode.

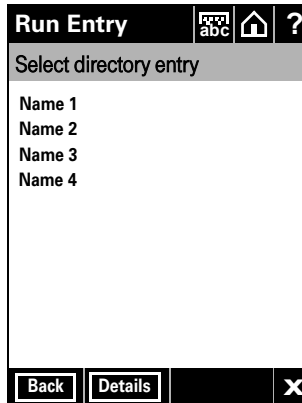


Select any field to import an entry. The "CreateSpeedDialEntry" page will be opened and the name and number of the entry will be displayed.



Select "Menu".
Open the register "Select Action" and select "Import".
The register "Select directory entry" is shown.

Step by Step



Select one entry.

The entry is loaded in the "SpeedDialEntry" register. Long names will be shortened to 11 digits. Now you can change the entry. Select "Save" from the "Select Action" menu.

Delete an entry

Precondition: There are already entries in your SpeedDialApplet
→ Page 43.

Start the "SpeedDialApplet" midlet → Page 42 and activate the Edit Mode.

Name

Select any field to delete. Name and number are shown in the "CreateSpeedDialEntry" register.

Menu

Select "Menu".
Select "Delete" from the "Select Action" menu.

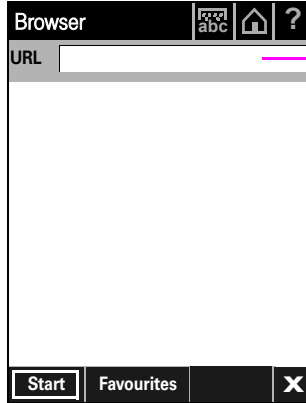
The selected entry will be deleted.

Step by Step



WAP browser

Double-click on the symbol on the start page → page 8 to start the application.



Address line



To be able to use the WAP browser, this function must be set up correctly → page 49 and an Internet connection must exist.



Opens the personal start page (to change, see → page 49).



Opens the Favorites list from where the WAP pages entered there can be invoked quickly.



Close the WAP browser.



In this view, the context menu offers the following:

- **Back:** Starts the search.
- **Home Page:** Opens the personal start page (to change, see → page 49).
- **Manage Favorites:** Opens the Favorites list.
- **Save to Favorites:** Stores the URL of the current page as favorite → page 47.
- **Refresh page:** Loads the current page again.
- **Settings:** Enables the configuration of the WAP server and start page → page 49.
- **Enter URL:** Shows the address line for entering the URL.
- **Keyboard:** Flashes the display keyboard → page 10.
- **Home:** Displays the start page → page 8. The application remains open in the background.
- **Help:** Invokes the Help function → page 54.
- **Exit LDAP:** Quits the application and displays the start page → page 8.

Step by Step



Double-click on the symbol on the start page → page 8 to start the application.



Input the URL in the address line.



Confirm to load the page. The page header appears in the system bar. If the content is large, scroll bars are displayed at the right and the bottom.



Opens the concerned previous displayed page (move back in the navigation history).

Favorites



Double click on the symbol on the start page → page 8 to start the application.

Save the favorites



Open the context menu and select "Save to Favorites".

Save Favourite	abc	Home	?
Name			
Favorite 1			
URL			
http://wap.wapcontent.com/index.wml			
Save	Cancel	Home	X

Input field for favorites name

Input field for URL



Open the display keyboard to input letters.



Browse with the keys to move from one input field to another.



If necessary use keys to move the cursor to the left or right.



Confirm changes. You are taken to the Favorites list.

Step by Step

Change favorites



Open the Favorites list.



Select the desired favorite.



Open the favorite to make changes.

Input field for the name of th

Input field for the URL



Open the display keyboard to input characters.



Browse with the keys to move from one input field to another input field.



If necessary use keys move the cursor to the left or right.



Confirm changes. You are returned to the Favorites list.



Open the Favorites list.



Select the desired favorite.



Delete the favorite.



Answer the question with "Yes" to delete the entry permanently.

Step by Step

Configuration



Double-click on the symbol on the start page → page 8 to start the application.



Open the context menu and select "Settings".

"Web Access Settings" register



Input the name and the password.



If **necessary**, confirm the changes. You are returned to the WAP browser.

"Notes" register

Enter the URL of the start page of the WAP browser in the "Home page" register.



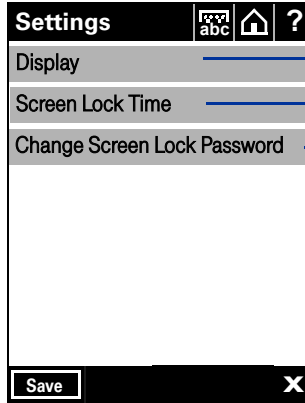
Confirm the entry. You are returned to the WAP browser.

Step by Step

Display

With this application you can choose your own display settings, set up a personal password for the screen lock, and switch the screen lock on and off.

Double-click on the symbol on the start page → page 8 to start the application.



Illumination → Page 50

Screen Lock → Page 52

Password → Page 53



Select function.



Exit application.

Step by Step

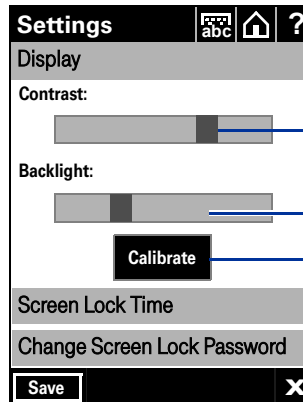
Contrast, Illumination and Calibration of the Display



Double-click on the symbol on the start page → Page 8 to start the application.



Select register "Display".



Scroll bar for contrast setting

Scroll bar to adjust the illumination

Invoking the display calibration

Adjust the contrast/brightness

You have the option of changing the brightness of the backlight and brightness/contrast of the display. For this, click on one of the two scroll bars and pull to the right (strong/bright) or to the left (weak/dark).

Save

If necessary, confirm changes.

Calibrate the display

Click on "Calibrate" and follow the instructions on the display.

Save

Confirm the changes.

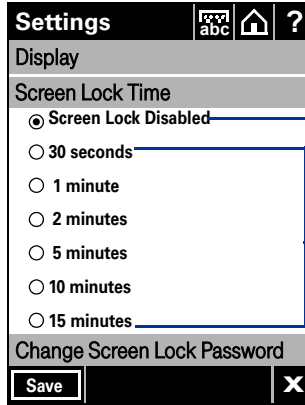
Step by Step



Screen Lock

Double-click on the symbol on the start page → Page 8 to start the application.

Select register "Screen Lock Time".



Deactivate Screen Lock

Activate Screen Lock



Deactivate Screen Lock

Select "Screen Lock Disabled".

Confirm the change.



Activate Screen Lock

Select the time period after which you wish the screen lock to become active.

Confirm the change.

Step by Step

Change Password

You can choose the password yourself.

Double-click on the symbol on the start page → Page 8 to start the application.



Select register "Change Screen Lock Password".



Enter current password at "Current".



Enter new password at "New".



Reenter new password at "Confirm".

Save

Confirm the change.



If you have forgotten your personal password, contact your system administrator.

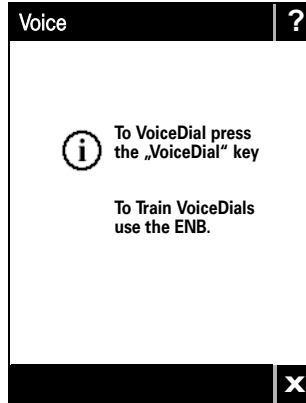
In this case the screen lock can only be deactivated from the administration area. The current password will be deleted, and the password will be reset to the default password **12345678**.

Step by Step



Voice dialling

For information on entry into the VoiceDial application, double click on the symbol in the start page → page 8.



Close the dialog window.

For details on how to add VoiceDial to an entry, see → page 25.

For details on dialling using the VoiceDial function, see → page 17.

Online help



Click on the symbol in the system bar → page 7, to start the application.

The Help is opened in the WAP browser → page 46.



To be able to use the online Help, this function must be set up correctly. Ask your competent authority/specialized staff.

Index

A

Adjust backlight 50
 Application bar 9
 Application symbols 8

B

Browser 46

C

Calibrate Display 51
 CE-Reference Numbers/tags 2
 Company telephone directory 15, 36
 List of search results 38
 Search entry 36
 Contrast 51

D

Dialog messages 10
 Display 7
 Display contrast setting 50
 Display keyboard 10
 Display, calibrate 50

E

ENB 13, 21
 Exporting
 from Microsoft Outlook 30

H

Help function 54

I

Illumination 51

J

Java-Midlets 39

L

LDAP 15, 36
 Search results 38

M

Messages 10
 Midlets 39

N

Navigation keys 5

O

Online Help 54
 Operating instructions 2
 Operation range 5
 Operation steps 6
 Operation, intuitive 6

P

Password protection 52, 53
 Personal directory
 Import entry in speed dial list 44
 Personal password
 Entering 53
 Forgotten 53
 Personal telephone directory 13, 21
 Adding VoiceDial to an entry 25
 Change entry 27
 Delete entry 27
 Set up entry 22
 View entry 26

R

Recording 25
 Recording a VoiceDial entry 25

S

Screen Lock	12
Activate, deactivate	52
Change password	53
Operation	12
Set time	52
Timeout	52
Settings	
Calibrate Display	51
Contrast	51
Illumination	51
Speed Dial	16
Speed Dial List	42
Start page	8
Start symbols	8
Symbol explanations	6
Symbols	6
System bar	9

V

Voice Dialling	17
VoiceDial	
"Try again" message	17
play	26
record	25
remove	26
replace, rerecord	26
start symbol	54

W

WAP browser	46
Configuration	49
Favorites	47

Important telephone numbers

For problems:

For questions regarding sales:

Upon delivery of the equipment, please enter
telephone numbers!



The equipment referred to in these instructions conforms with the requirements of the EU directive: 1999/5/EG - Directive on radio equipment and telecommunications terminal equipment and mutual recognition of conformity.

Compliance with the above directive is confirmed by the CE marking affixed to the equipment.

The declaration of conformity can be viewed at:

Deutsche Telekom AG

Geschäftsbereich Endgeräte

CE-Testlab Steinfurt

Sonnenschein 38

48565 Steinfurt

Tel: 02551 10 612

Mail: testlab-stiefurt@telekom.de

Issued by:
Deutsche Telekom AG

Right of modification reserved.
Reference number: A31003-E8500-X900-2-7619
SW version: 5.0
Status: 12/2004
Printed on environmentally compatible
recycled paper.