



INSTALLATION INSTRUCTION

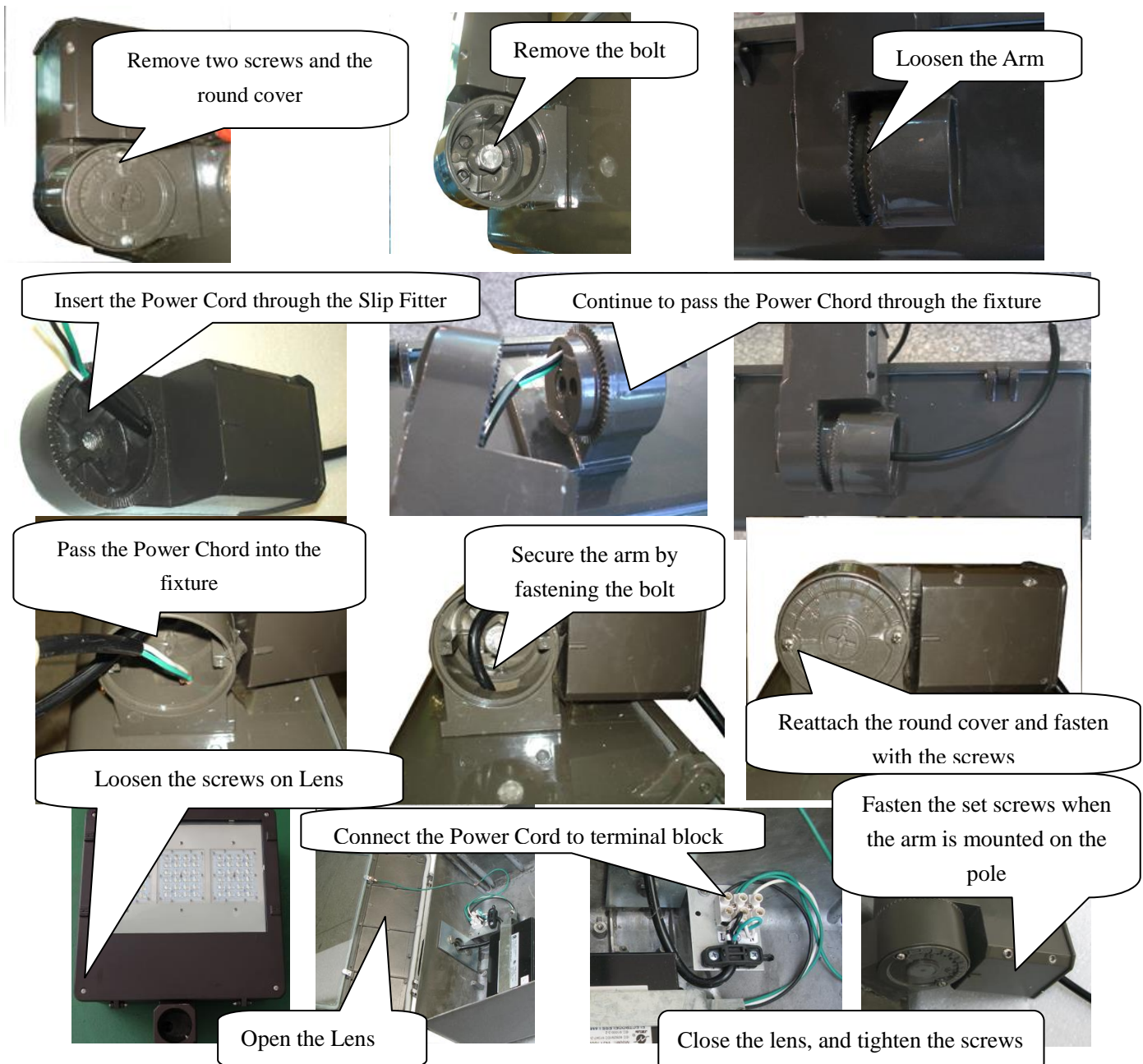
MHTL-SFL

1. Main Data:

Fixture Model	LED	Input Voltage	System Wattage	Ballast Model	PF @ 120V
MHTL-SFL-45E	XTE	120-277V AC 50/60Hz	45W	EUC-050S11ST	≥ 0.95
MHTL-SFL-76E	XTE		76W	EUC-075S140ST	≥ 0.95
MHTL-SFL-100E	XTE		100W	EUC-100S245ST	≥ 0.95
MHTL-SFL-127E	XTE		127W	EUC-120T105ST	≥ 0.95
MHTL-SFL-170E	XTE		170W	EUC-160Q105ST	≥ 0.95
MHTL-SFL-237E	XTE		237W	EUC-240H140ST	≥ 0.95

2. Installation and Maintenance Instructions:

1. This product is to be installed and serviced by a certified electrician.
2. The Luminaire should be installed in an area with good ventilation, clear of any corrosive or combustible gases and explosive objects.
3. A supply voltage tolerance of +/- 10% is allowable. Voltage outside of this range will influence the normal operation of this luminaire and result in damage to the luminaire.
4. The luminaire must be properly grounded to prevent accidental electrical shocks, and to prevent interference from the electrical ballast affecting the normal operation of the luminaire.



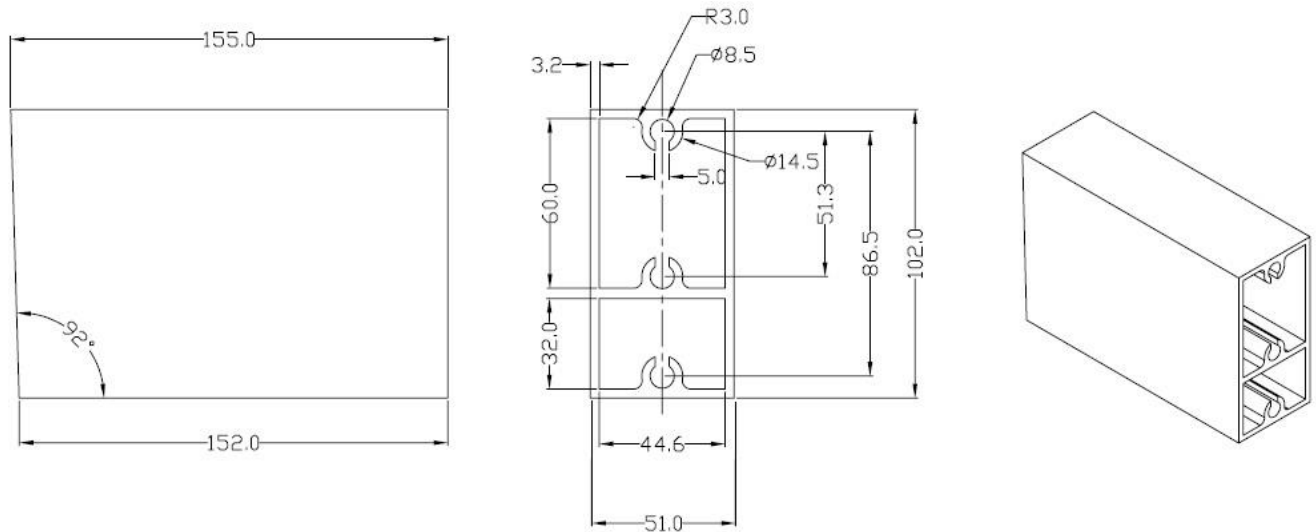


INSTALLATION INSTRUCTION

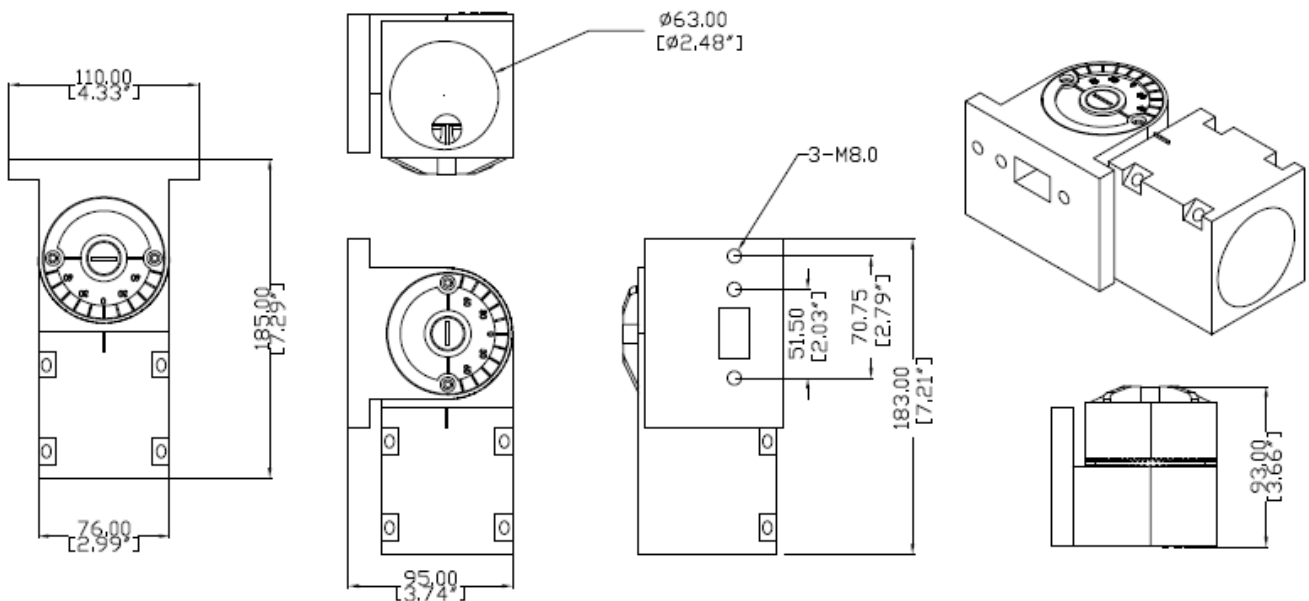
MHTL-SFL

3. Mounting Dimensions:

6" Extruded Arm (Optional)



Slip Fitter (Standard, Up to O.D. 2 3/8" Round Pole)



Swivel Mount (Optional)

