



FlyDVB-S

User Manual

Animation Technologies Inc.
www.lifeview.com

Ver: 1.9

Copyright and Trademark Notice

©2006 by Animation Technologies Inc. All rights reserved.

Information in this document is subject to change without notice. No part of this document may be reproduced or transmitted in any form or by any means, electronic or mechanical without prior written permission of Animation Technologies Inc.

Animation Technologies Inc. makes no representation or warranties with respect to the contents hereof and specifically disclaims any implied warranties of merchantability or fitness for any particular purpose. Animation Technologies Inc. reserves the right to revise this manual and to make changes in its content without obligation to notify any person or organization of such revision or change. In no event shall Animation Technologies Inc. be liable to you or any third party for any consequential, incidental, direct, indirect, special, punitive, or other damages (including without limitation, damages for loss of profits, interruptions, loss of information, pecuniary loss, etc.), even if Animation Technologies Inc. has been advised of the possibility of such damages arising from any defect or error in this manual or product.

Updates to this documentation can be obtained from our website:
<http://www.lifeview.com>.

Windows® is a trademark of Microsoft Corporation. All other brand names used in this document are registered trademarks of their respective companies.

CE Statement: This equipment has been tested and complies with EN 55022, EN 55024, EN 61000-3-2, EN 61000-3-3, EN 61000-4-2, EN 61000-4-3, EN 61000-4-4, EN 61000-4-5, 61000-4-6, EN 61000-4-8, EN 61000-4-11 standards.

Contents

1. Getting Started	1
1.1 Introduction.....	1
1.2 Features	1
1.3 Package Contents	1
1.4 System Requirements	2
2. Input & Output Connections	3
2.1 FlyDVB-S Connections	3
3. Installation	4
3.1 DirectX.....	4
3.2 Installing the FlyDVB-S.....	5
3.3 Driver Installation	6
3.4 Installation of LifeView DTV	6
4. LifeView DTV	7
4.1 DTV Interface Overview.....	7
4.2 Scanning for TV Channels (Digital).....	8
4.3 Choosing your source.....	10
4.4 Channel list.....	11
4.5 Volume controls.....	11
4.6 Signal Strength Meter	11
4.7 Teletext.....	12
4.8 EPG	13
4.9 Internet via satellite.....	14
5. Setting	15
5.1 DVB Settings	15
5.2 Analog Video Settings (AV-In/S-Video)	16
6. PIP (Picture-In-Picture) and TWIN Mode	20
7. Recording	22
7.1 The Recording Button.....	22
7.2 The TimeShift Button	23
7.3 Schedule Recording	24
7.4 Snapshots.....	25

7.5 Play Mode.....	25
8. The Remote Control and Keyboard Shortcuts	26
8.1 Remote Control	26
8.2 Keyboard Shortcuts	27
9. Technical Support	28
9.1 Contact Us.....	28

1. Getting Started

1.1 Introduction

Thank you for choosing the **FlyDVB-S** TV tuner and video capture card. This product turns your PC into a powerful desktop multimedia system quickly and easily. Capture video and still images and experience real-time MPEG-2 recording. Watch both digital TV and analog video at the same time, on the same screen, thanks to LifeView's exclusive MST technology! The **FlyDVB-S** provides you with a high quality TV viewing experience with true stereo sound!

1.2 Features

- Satellite ready DVB-S Silicon Tuner
- Watch free-to-view satellite digital TV on your PC
- Reception of DVB data services at 8-10 Mbit/sec*
- S-Video and composite video inputs
- Real-time recording from Digital TV and Analog inputs
- Watch both digital TV and analog video** simultaneously with enhanced PIP functionality
- Watch TV in a resizable window or full-screen
- TimeShifting functions to pause, rewind and fast-forward live TV
- Capture still image snapshots from live video
- Listen to DVB radio
- Compatible with Windows® 2000 and XP

* Requires satellite DVB subscription

** From S-Video or composite video inputs

1.3 Package Contents

When removing the contents of the package, please inspect all items to ensure no damage was sustained during shipping. The following items should be included in the package:

- FlyDVB-S card
- Low-profile card bracket
- A/V-Cable
- Remote Control
- IR Sensor cable
- Installation CD-ROM with User Manual
- Quick Installation Guide

1.4 System Requirements

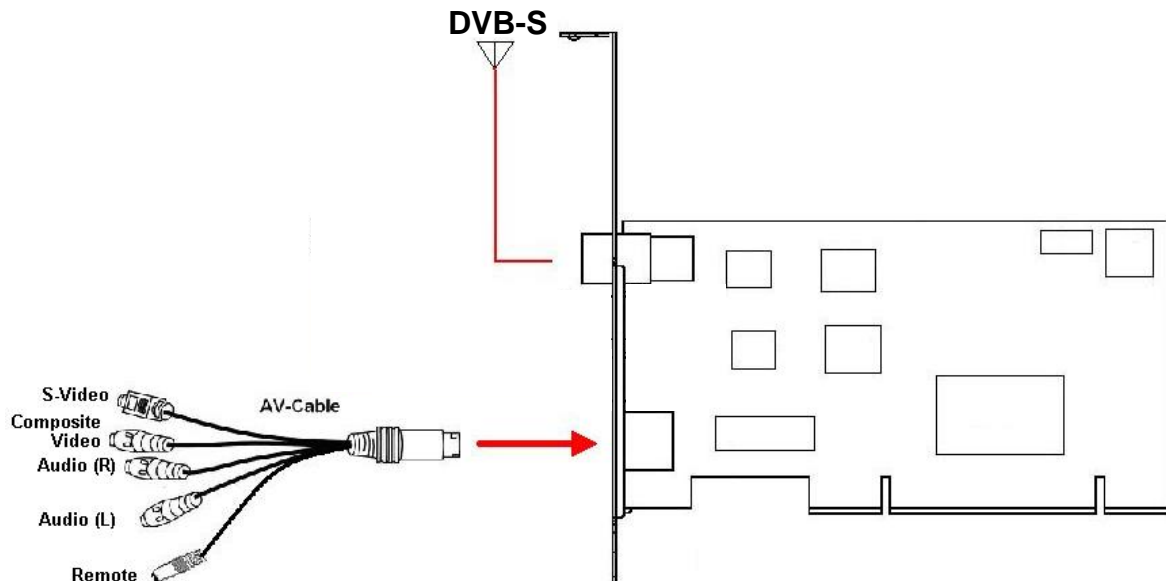
To successfully use the **FlyDVB-S** solution, please ensure that your system meets the following requirements:

- Pentium® 4 or AMD Athlon 1.4 GHz or faster, Pentium 4® 2.4GHz or faster recommended (HDTV)
- 256 MB RAM (minimum), 512 MB RAM recommended
- Windows® 2000(SP4)/XP(SP2)
- 100 MB available hard disk space for installation, additional free space required for recording and TimeShifting
- CD-ROM or DVD drive
- VGA chipset with full DirectX 9.0 support
- DirectX 9.0c or higher installed
- AC97 compatible sound card for audio
- Speakers or headphones for audio output
- Available PCI slot
- Available IRQ
- Satellite dish with LNB

2. Input & Output Connections

2.1 FlyDVB-S Connections

The **FlyDVB-S** card supports S-Video and composite video input. See the diagram below for connection details.



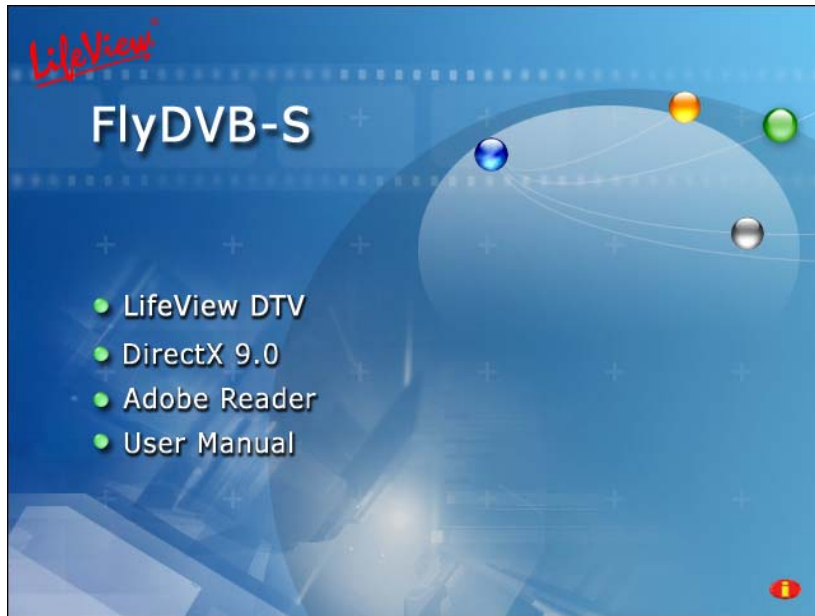
- DVB-S:** Connects to your satellite dish LNB
- AV Cable:** Connect the AV Cable to the 9-pin connector of the FlyDVB-S
- S-Video:** S-Video input for external devices like VCRs or camcorders
- Composite Video:** Composite video input for external devices like VCRs or camcorders
- Audio (R):** Connects to the right audio channel of an external audio device
- Audio (L):** Connects to the left audio channel of an external audio device
- Remote:** Connects to the IR remote cable

3. Installation

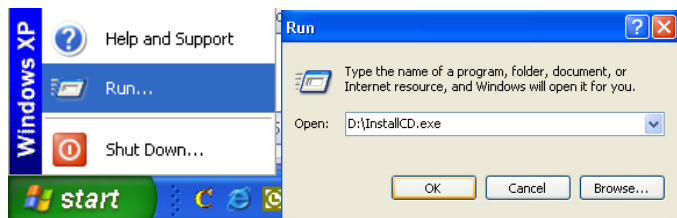
The following sections provide step-by-step instructions on installing and configuring the card, accessories and software.

3.1 DirectX

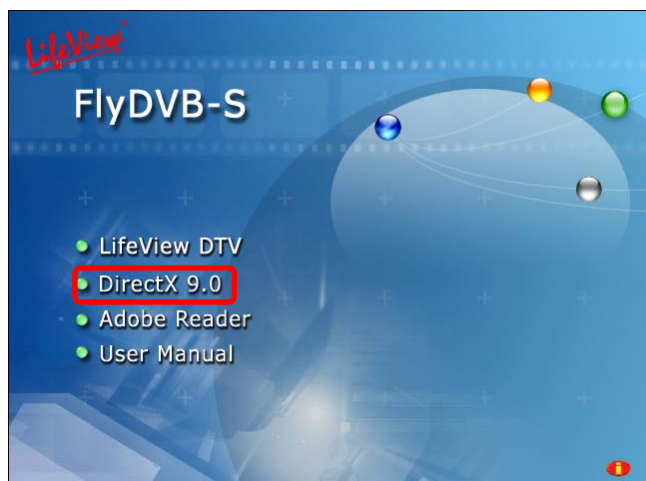
Before installing your the FlyDVB-S, it is necessary to install DirectX 9.0c or higher. Insert the installation CD and an installation menu should load automatically.



If the Autostart program does not appear automatically when you insert your LifeView Installation CD, start it manually by running the **InstallCD.exe** file located on the LifeView Installation CD, or by clicking the Start button, choosing **Run...**, and typing in **D:\InstallCD.exe**. (if D: is your CD-ROM drive)



Click on **DirectX 9.0** and follow the prompts to install DirectX. After the installation is completed, shut down the computer.



3.2 Installing the FlyDVB-S

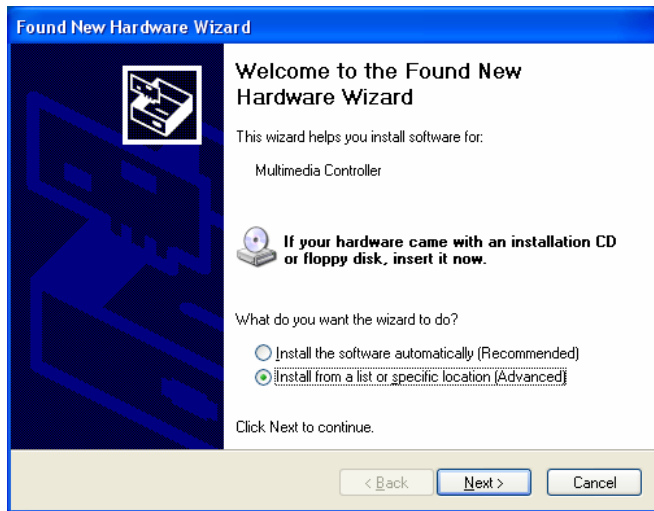
1. Switch off your PC and all connected peripheral devices such as your printer and monitor. Leave the AC power cable connected for the time being, so that your computer is still grounded.
2. Touch the metal chassis at the rear of the PC to ground and to discharge static. Now unplug the cord from the AC power socket.
3. Remove the cover from the case of your PC.
4. Look for a free PCI expansion slot. When selecting the PCI slot, note that TV cards should not be plugged into PCI slot 1 in conjunction with an AGP graphics card because PCI slot 1 is very frequently assigned to the same interrupts as the AGP slot. This would give both cards the same interrupt, which can lead to crashes during operation!
(This is usually the PCI slot closest to the AGP slot, but always check your mainboard manual).
5. Carefully remove the card from its packaging and pick it up by the edges with one hand while your other hand is touching a metal part of the PC. This will ensure that your body is completely discharged via your computer without damaging the TV card.
6. Align the holder at the rear of the TV card in the expansion slot in such a way that the card's connectors are directly in line with the slot's socket.
7. Push the TV card firmly into the slot, ensuring good contact.
8. Fasten the TV card with an appropriate screw.
9. Reinstall the cover of your PC case.
10. Connect the LNB of your satellite dish to the terminal on the TV card. Reconnect the AC power cable as well as all other cables. Make sure that your speakers are set to low volume.

3.3 Driver Installation

Windows will automatically detect your new hardware and will bring up the **Found New Hardware Wizard** window.

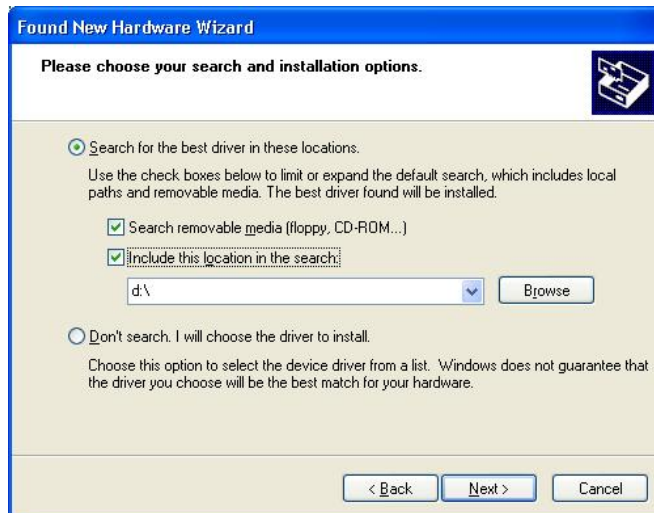
If you have not already done so, place the Installation CD into your CD-ROM drive.

Select **Install from a list or specific location (Advanced)** and click **Next**.



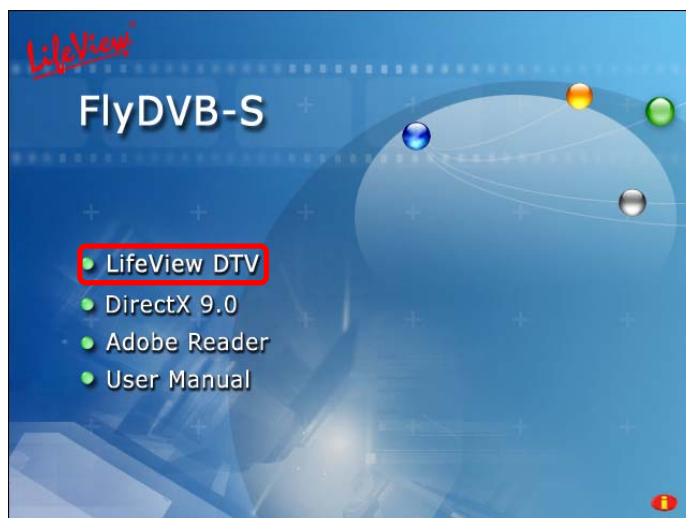
Now select **Search for the best driver in these locations**, make sure “**Search removable media is checked**,” and click **Next**.

Windows will now find the drivers on the Installation CD and install them automatically. After installing the driver, Windows will inform you that it has done so successfully. Click **Finish**.



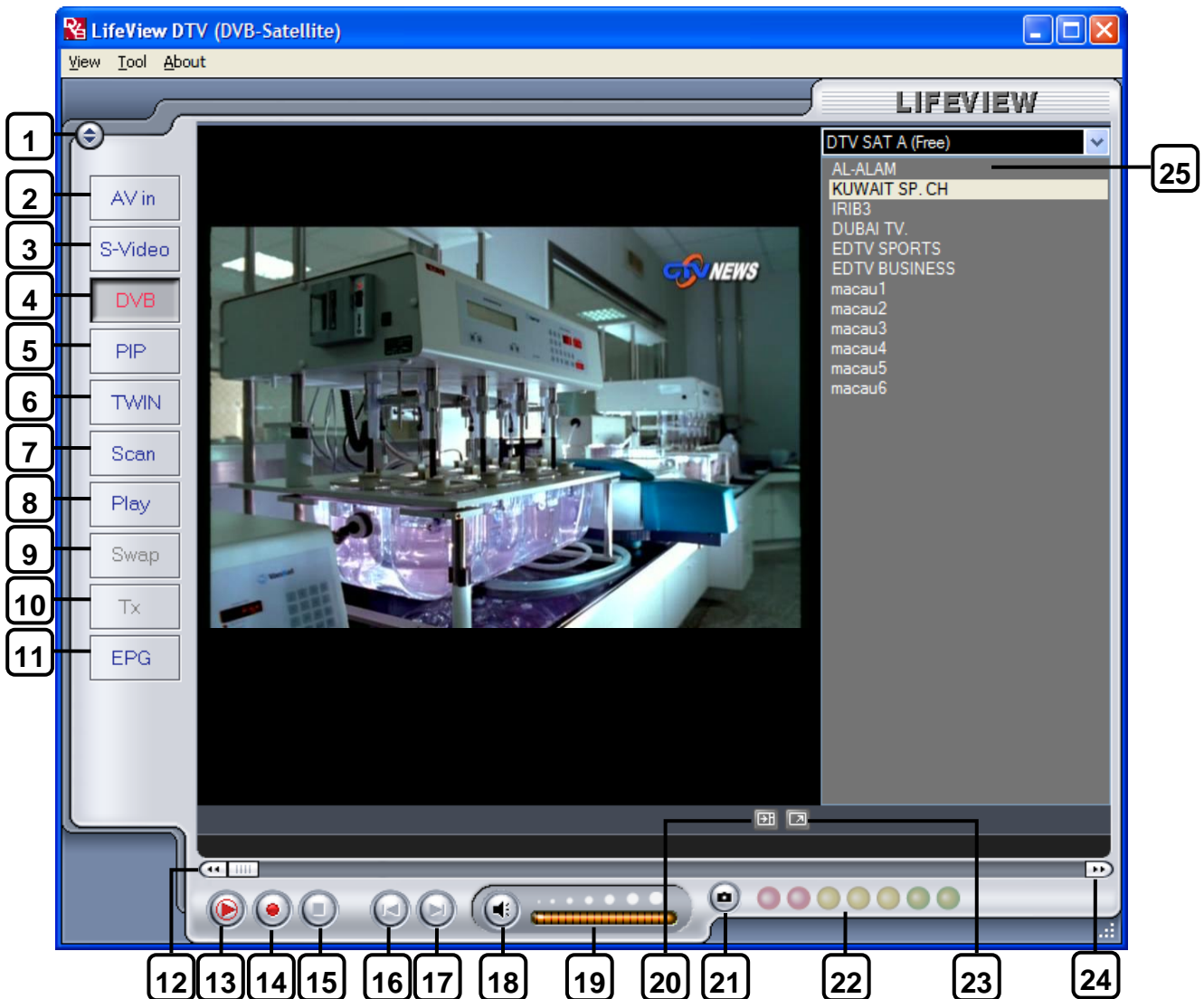
3.4 Installation of LifeView DTV

Install the LifeView DTV software by clicking on **LifeView DTV Setup**. Just follow the prompts to install the software.



4. LifeView DTV

4.1 DTV Interface Overview



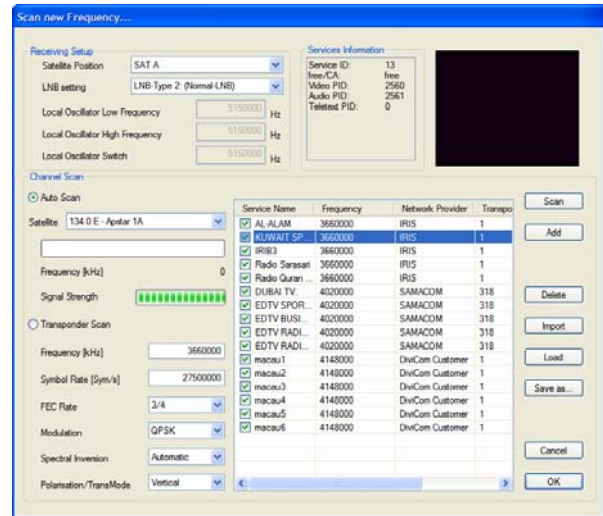
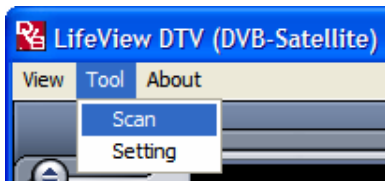
- | | |
|---|---|
| 1. Change Skin | 14. Record Start |
| 2. Switch to composite video in | 15. Stop |
| 3. Switch to S-Video in | 16. Skip to beginning |
| 4. Switch to DVB TV | 17. Skip to end |
| 5. Start/Stop PIP mode | 18. Mute on/off |
| 6. Start/Stop Twin mode | 19. Volume bar |
| 7. Open Scan settings | 20. Show/hide channel list |
| 8. Switch to Play mode | 21. Snapshot button |
| 9. Swap main and second window
(in PIP mode) | 22. Signal Strength Meter |
| 10. Teletext | 23. Toggle fullscreen/windowed viewing mode |
| 11. Open EPG window | 24. Fast Forward |
| 12. Rewind | 25. Channel list |
| 13. TimeShift Start/Play/Pause | |

4.2 Scanning for TV Channels (Digital)

4.2.1 Scan Settings

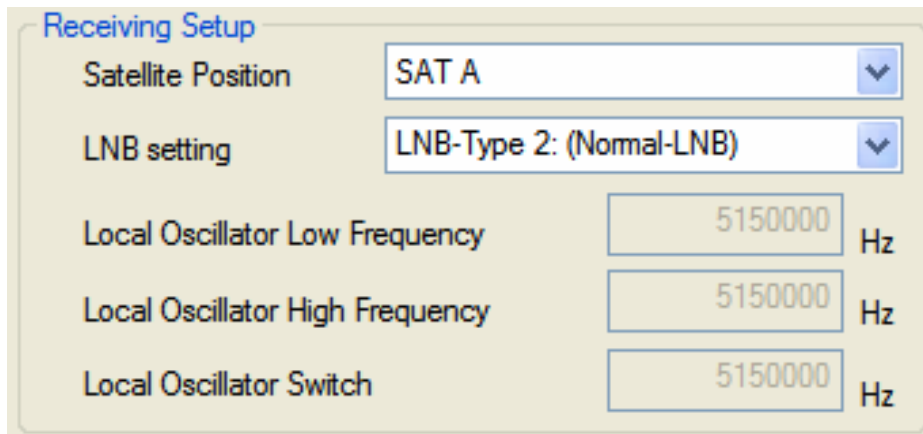
Before you can watch digital TV, you have to scan for available channels in your area.

On the Menu Bar, click on **Tool**, then click on **Scan**. You can also click on the **Scan** button on the left side of the screen.



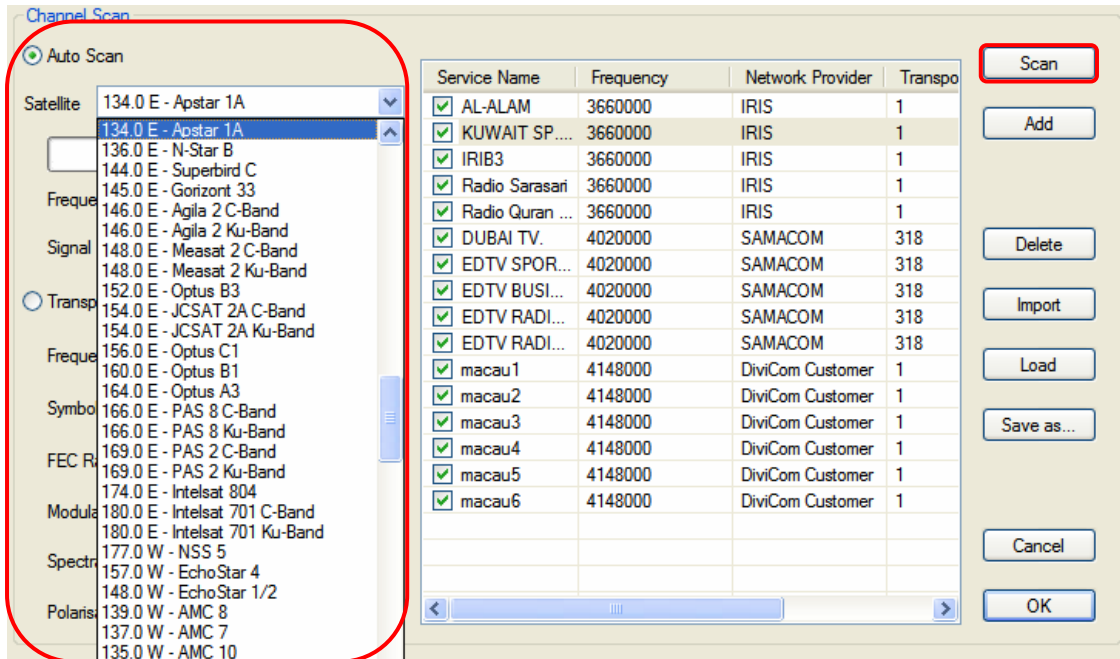
4.2.2 Receiving Setup

Here you can change settings to adjust your reception of digital TV. Choose your **Satellite Position**, **Local Oscillator Low Frequency**, **Local Oscillator High Frequency**, and **Local Oscillator Switch** based on the specifications of your LNB. You can find these settings either in the LNB manual, or on a sticker on the LNB itself. You can also choose a preset **LNB setting** from the drop down list.

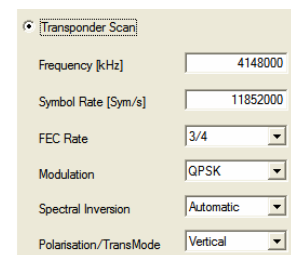


4.2.3 Channel Scanning

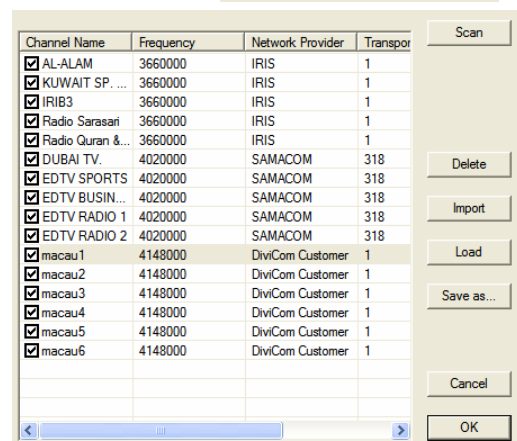
Select a satellite position and a corresponding satellite from the drop-down list, and click on the **Scan** button.



If you have successfully scanned a satellite and wish to add another transponder type, click on the **Transponder Scan** button, enter the settings of the transponder, then click **Scan**. Updated frequencies will be available regularly on our website at www.lifeview.com. You can also find information at www.lyngsat.com or www.satcodx.com.








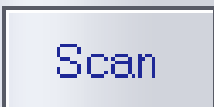




Found channels will be displayed in a window, and here you can customize your channel list. You can sort your channel list by **Channel Name**, **Frequency**, **Network Provider**, **Transponder ID**, and **Audio** type by clicking on the button at the top of each column. Clicking on the name of a channel will give you the option to rename it, and clicking on the Language (under Audio) will let you select between available Languages. You can uncheck a channel so it does not appear in your channel list, or you can select it and click **Delete** to remove the channel entirely. You can also import channel lists into your current list by clicking **Import**, you can load another channel list by clicking **Load**, and you can save your channel list by clicking **Save As...** To save your changes, click **OK**. To cancel your changes, click **Cancel**.



4.3 Choosing your source

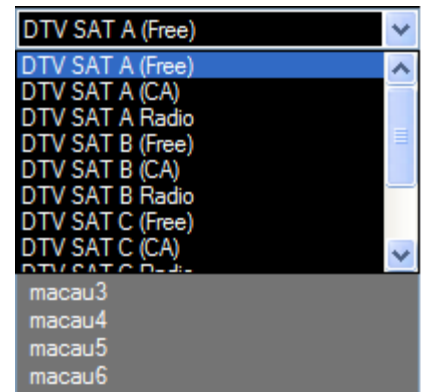
Your **FlyDVB-S** is not limited to digital TV reception – you can also view analog sources.

On the left side of the interface, you will find buttons that let you access different sources.

	Switches to an external device connected to the composite video input
	Switches to an external device connected to the S-Video input
	Switches to Digital Satellite TV (selected by default)
	Turns on and off PIP Mode, which lets you watch both digital TV and an analog input at the same time in separate windows
	Turns on and off Twin Mode, which lets you watch digital TV and an analog input at the same time side by side
	Brings up the Scan Settings dialog
	Enters Play Mode, and lets you view snapshots you have taken and watch video you have captured
	Swaps video between the main window and second window (in PIP or Twin mode)
	Opens Teletext window (when available)
	Opens EPG window

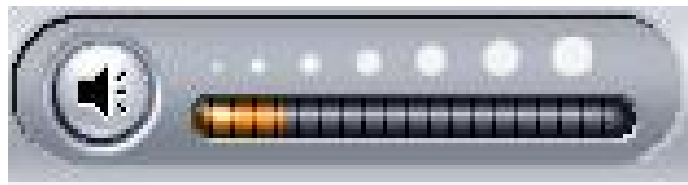
4.4 Channel list

On the right side of the interface is the channel list. Here you will see available channels for DVB if you are in DVB mode. Simply click on a channel to switch to it, or press the \uparrow or \downarrow arrow keys to switch channels. In DVB mode, you can select DVB Radio by clicking on the dropdown box and choosing **Radio**.



4.5 Volume controls

At the bottom of the interface is the volume bar. Click on the bar to set the volume to that level, or press the \leftarrow or \rightarrow arrow keys to decrease or increase the volume. Click on the speaker icon to mute the audio.



4.6 Signal Strength Meter

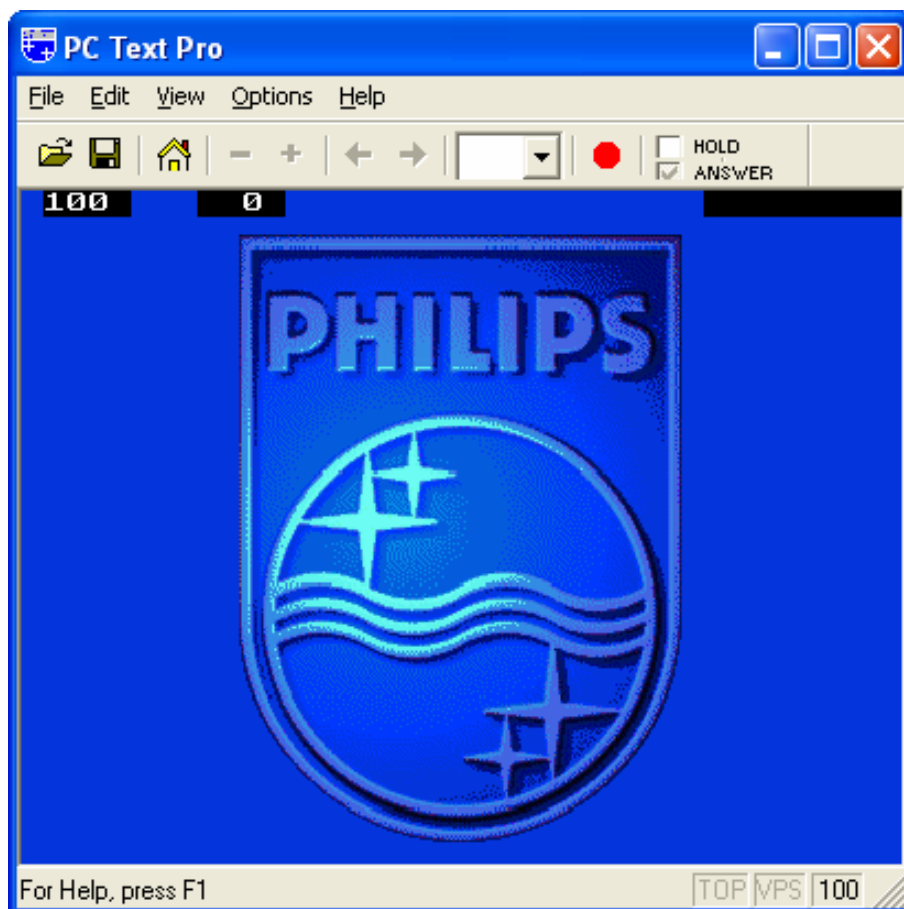
The signal strength meter indicates how strong the signal is for the current channel. Green lights indicate good reception, yellow lights indicate fair reception, and red lights indicate poor reception.



4.7 Teletext

Simply clicking the Tx button opens the Teletext window. Not all TV stations provide Teletext service. Everyday, however, competent editorial offices provide a selection of quickly and easily accessible information, which you can access for free, since it is constantly transferred along with the TV picture via the so-called vertical blanking interval of the picture signal. Surfing through the pages is conveniently easy thanks to the preloaded text tables. Use the arrow buttons (on the software interface, the PC keyboard or the remote control) to navigate from one page to another or enter a page number directly. You can also click a page reference directly to call up its content, practically with no delay.

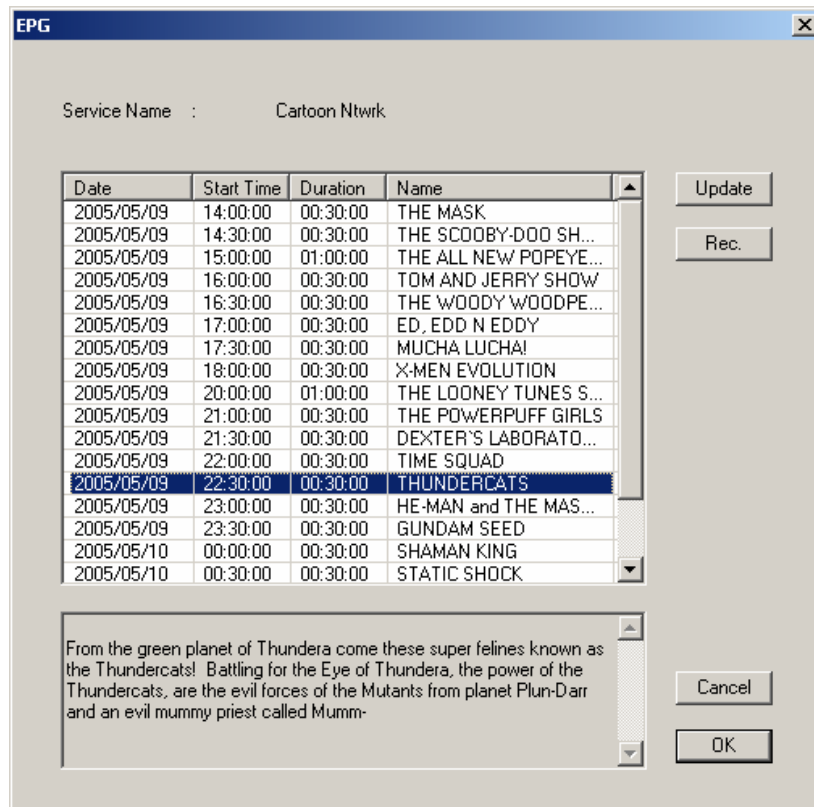
For further information about using Teletext, click on **Help** at the top right of your screen to read the Help file.



4.8 EPG

Digital TV stations often broadcast **Electronic Program Guide**, or EPG information. This information includes information about upcoming programs and their playing times, and can be used to see what shows will be playing later in the day and record them.

Click the **EPG** button to open the EPG window:



Click on **Update** to update the EPG information. Date, start time, duration and program name will appear in the table. Selecting an entry will show extended information about the program (if available).

Clicking on **Rec.** will schedule a recording of that program automatically using the EPG information – you can use this to easily schedule recordings of your favorite programs.

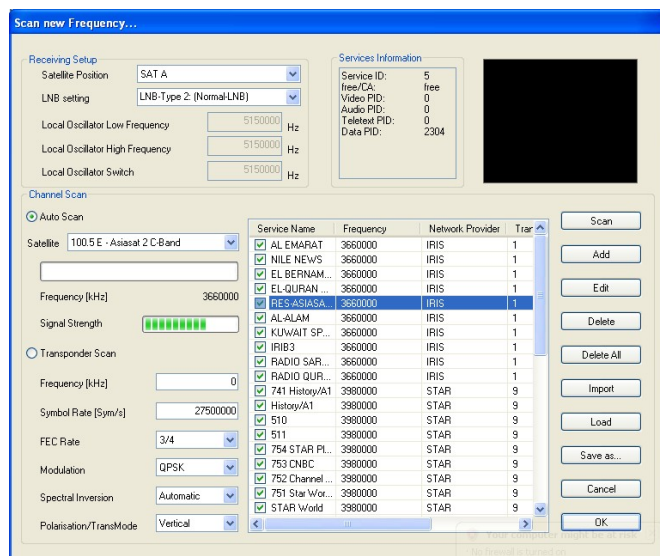
4.9 Internet via satellite

You can receive satellite internet service through selected internet providers using the FlyDVB Trio CardBus. You will need to find a service provider that serves your area and set up an account with them if necessary before following these steps.

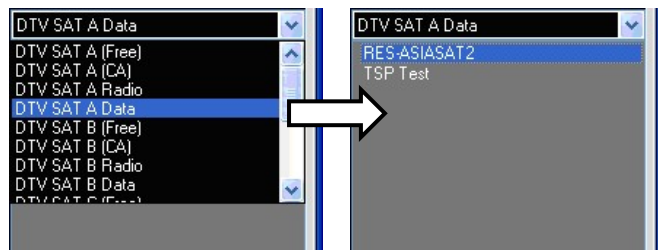
Open the DTV application, and a new Network Connection will be created automatically using the **Microsoft TV/Video Connection**.



In the DTV application, open the **Scan** dialog and scan the satellite that your service provider uses.



After the scan is finished, select the data channel that your service provider broadcasts on. You can tell which channels are data channels by using the channel list dropdown box and choosing a **Data** channel.

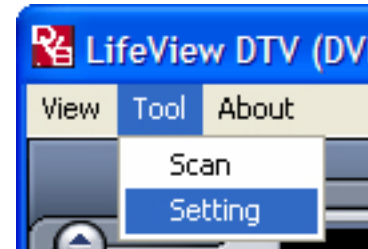


Now you are tuned into the data channel of your service provider. Follow the instructions given by your service provider to complete installation. For further support on receiving internet service via internet, contact your internet service provider.

! You *must* leave the DTV program open to use your internet connection – you can minimize it, but you must not close the DTV program or you will lose your connection.

5. Setting

To access the Setting window, on the menu bar, click on Tools -> Setting.



Depending on your current source, there will be different settings available to you.

5.1 DVB Settings

When you have DVB as your source, you will see the following options:

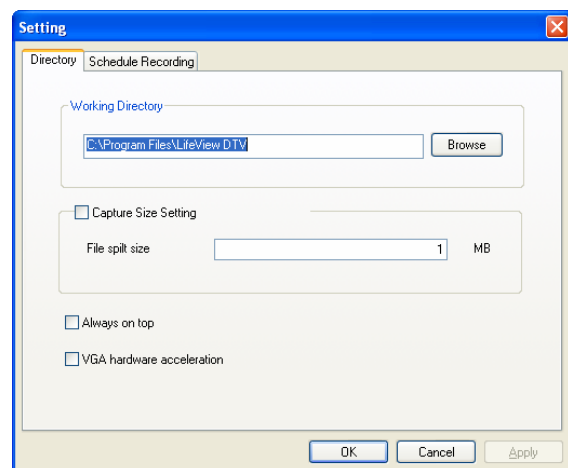
5.1.1 Directory Settings

Working Directory

Here you can change the directory used for saved files. Either type in the path, or click "Browse", go to the folder you want, and click OK.

Capture Size Setting

When checked, this will split recorded files into parts at the size entered as the **File split size**. This is useful if you want to save long recordings in more manageable files. For example, setting the file split size to 650 MB would make the files easy to burn to CDs.



Always on top

You can also choose to always have the DTV window on top of other applications by checking "Always on top".

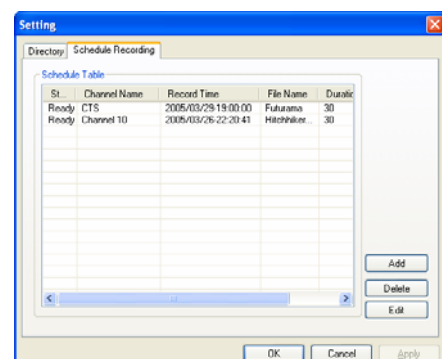
VGA hardware acceleration

This enables VGA hardware acceleration. Please note that not all graphics cards support this feature.

5.1.2 Schedule Recording

Here you find programs scheduled to be recorded.

Please refer to Chapter 7.3 for a description how to use Scheduled Recording.

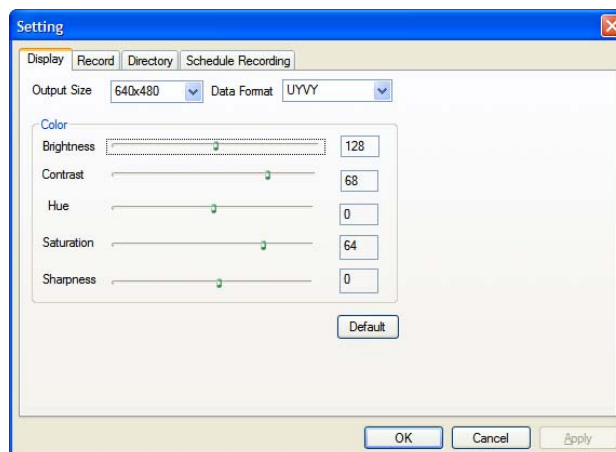


5.2 Analog Video Settings (AV-In/S-Video)

If your current source is AV-in, or S-Video, you will see the following options:

5.2.1 Display Settings

- **Output Size:** Here you can specify the display size of the analog source.
- **Data Format:** Here you can choose the data format to display video in.
- **Color:** Customize here the Color of the display characteristics like Brightness, Contrast, Hue, Saturation and Sharpness.
- Clicking on “Default” will put the settings back to the factory default.



5.2.2 Record Settings

Record Settings let you adjust how you record files from the AV-in and S-Video sources.

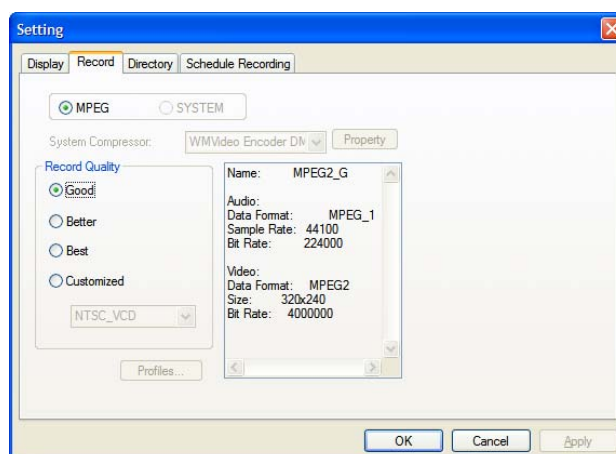
Record - MPEG:

Here you can define whether you want to record at Good, Better or Best quality according to predefined settings.

When you choose **Customized**, you can make a custom setting to record with.

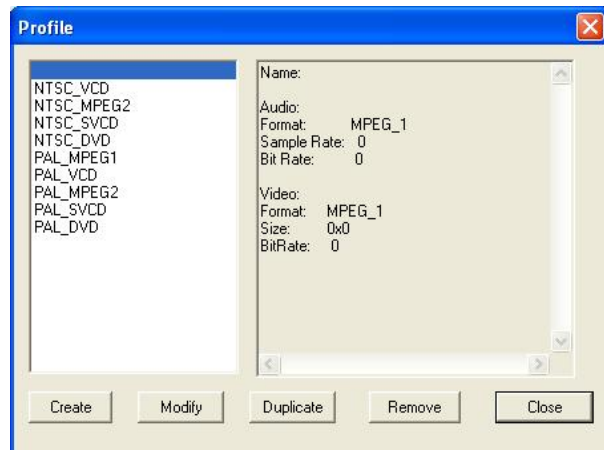
You can choose between the following formats:

- NTSC or PAL MPEG-1
- NTSC or PAL VCD
- NTSC or PAL MPEG-2
- NTSC or PAL SVCD
- NTSC or PAL DVD



The **Profiles...** - Button is also available when Customized is selected, and it opens the following screen:

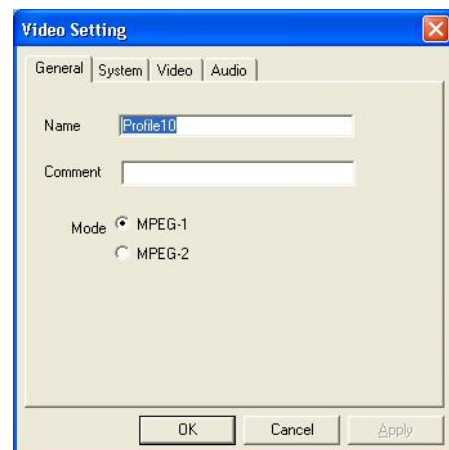
Here you can Create a new profile, Modify an existing one, Duplicate a profile, and Remove one or all of the existing profiles.



Create Profile

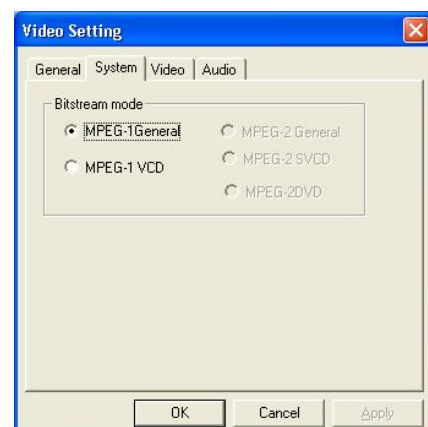
General:

Here, enter a name for the profile, and a comment to help identify it. Select MPEG-1 or MPEG-2 to use with the profile.



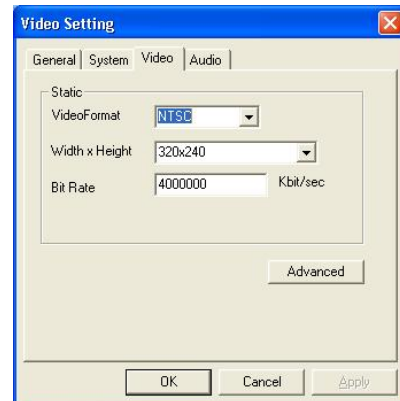
System:

Depending on the Mode selected in "General", select what Bitstream mode you want to use with the profile.

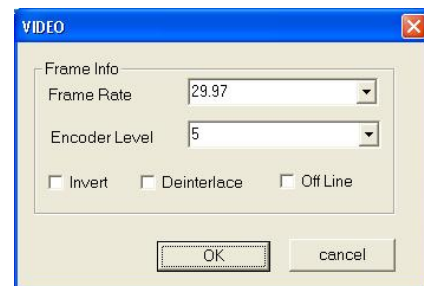


Video:

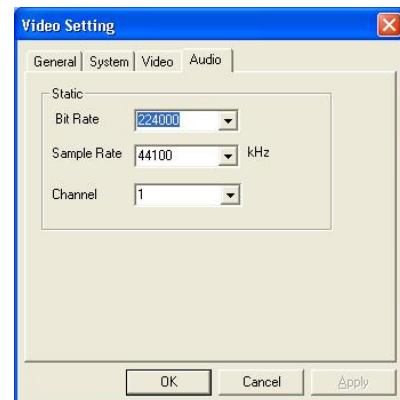
Here, choose the VideoFormat, the output size, and the Bit Rate you wish to use.



When you click on **Advanced**, another window will open where you can select the Frame Rate, the Encoder level and whether the recording should be Inverted, Deinterlaced and/or Off Line.

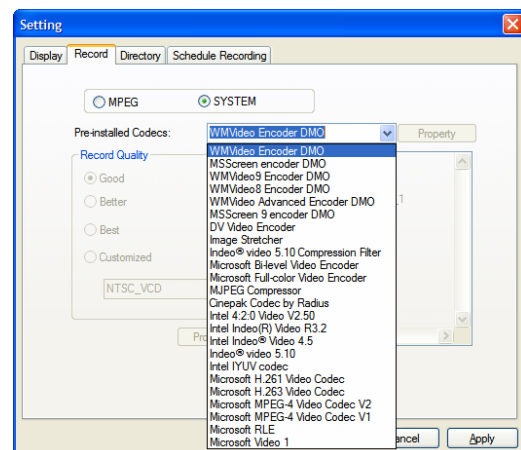


Audio: Here you can choose the Bit Rate, Sample Rate, and how many Channels to use for recorded audio. (1=mono, 2=stereo)



Record – SYSTEM

By selecting **SYSTEM** in the Record Setting window, you can access the codecs already installed in your system. Depending on the codec, you can access the properties of the codec, and modify their settings by clicking on the **Property** button. (not available with all codecs)



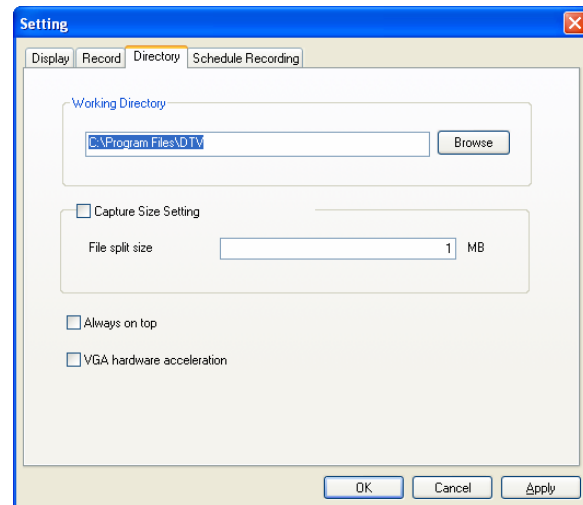
5.2.3 Directory Settings

Working Directory

Here you can change the directory used for saved files. Either type in the path, or click “Browse”, go to the folder you want, and click OK.

Capture Size Setting

When checked, this will split recorded files into parts at the size entered as the **File split size**. This is useful if you want to save long recordings in more manageable files. For example, setting the file split size to 650 MB would make the files easy to burn to CDs.



Always on top

You can also choose to always have the DTV window on top of other applications by checking “Always on top”.

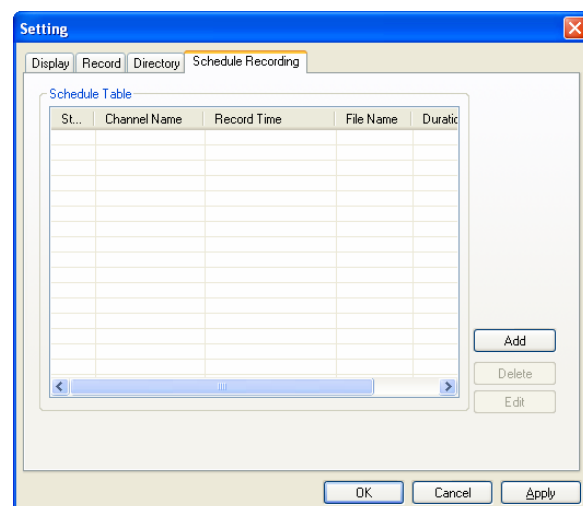
VGA hardware acceleration

This enables VGA hardware acceleration. Please note that not all graphics cards support this feature.

5.2.4 Schedule Recording

Here you find programs scheduled to be recorded.

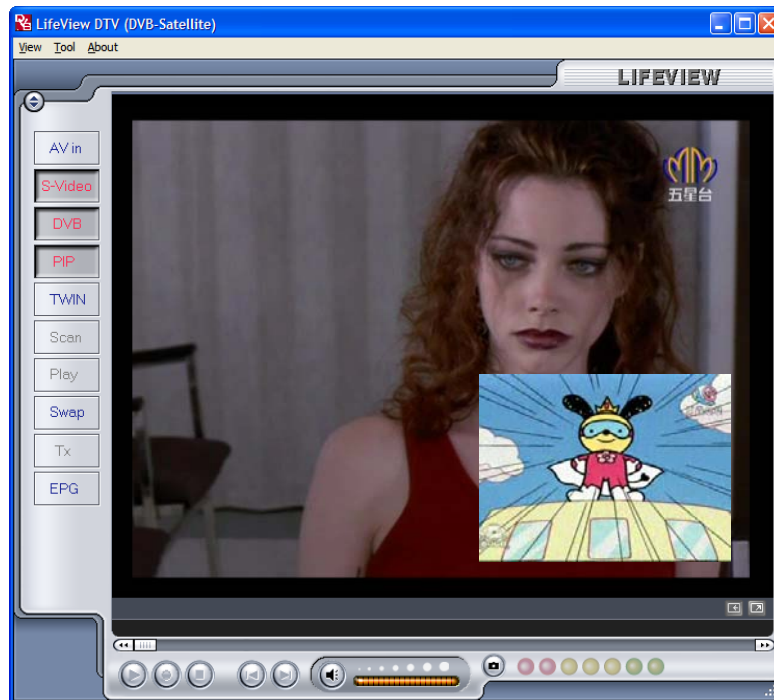
Please refer to Chapter 7.3 for a description how to use the Scheduled Recording.



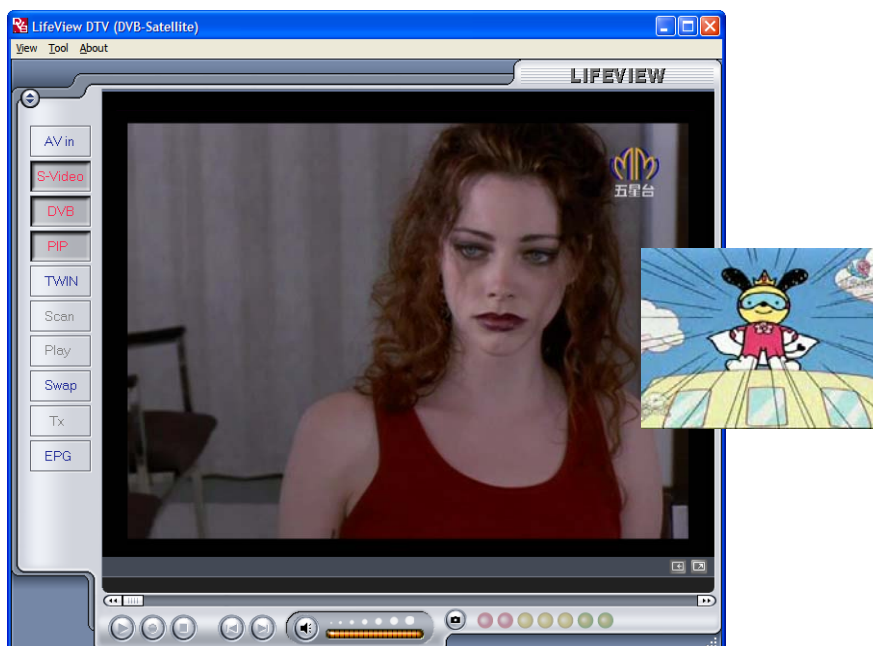
6. PIP (Picture-In-Picture) and TWIN Mode

The PIP/TWIN function can be accessed from the toolbar on the left. The PIP/TWIN features let you watch digital TV and an analog input (S-Video or AV in) simultaneously.

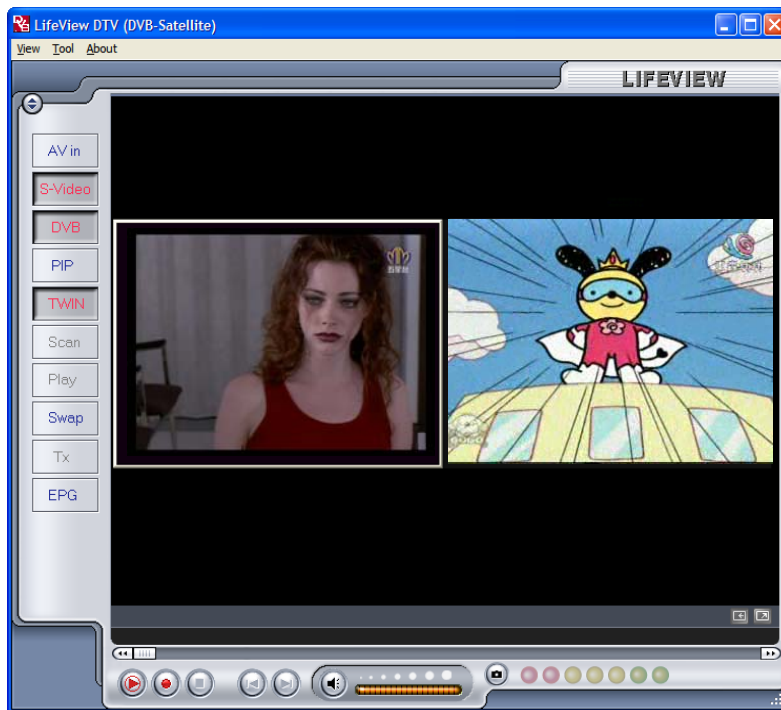
When you click on the PIP Button, you will see a second live stream at the bottom right. When you are in PIP-Mode, you can switch between S-Video, and AV in sources, depending on which connection you want to view in the second window.



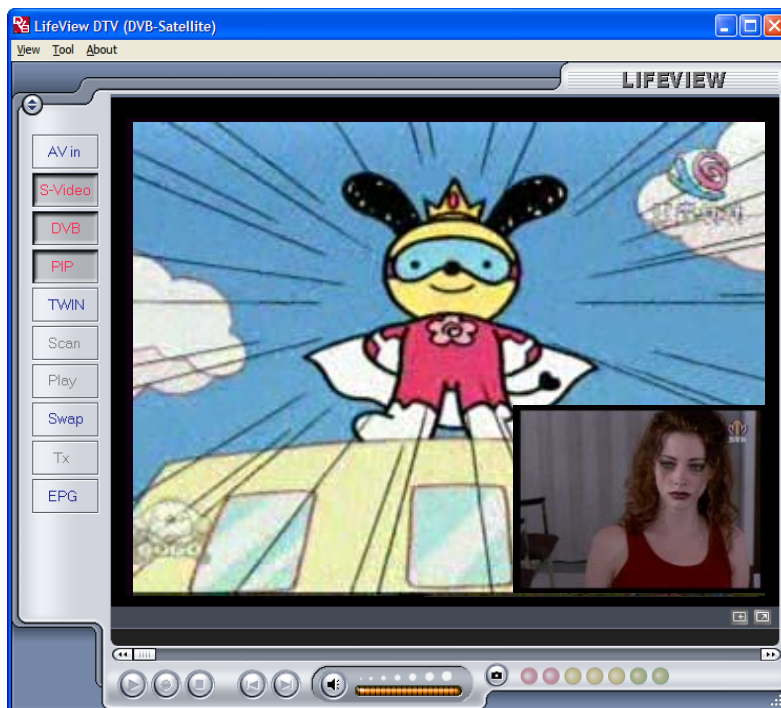
You can move the window anywhere on the desktop, and resize it by dragging it on its edges.



Clicking on Twin mode will show the two video streams side by side in identical windows. In this mode, the windows will be locked, and cannot be individually resized or moved.



Clicking on the Swap button will swap the main and second windows, so digital TV will be in the second window and your analog input will be in the main window.



To end PIP mode, click on the PIP button again to return to normal viewing. You cannot TimeShift or record when in PIP mode.

7. Recording

7.1 The Recording Button

By clicking the record button, you can record video displayed in the main window. When recording video, then you will see **•REC** above the play controls.



In DVB mode, you record the pure MPEG-2 Audio and Video signal. In analog mode (S-Video or AV-In) you record the signal in the format that you have specified in Record Settings. (Chapter 5.2.2) In all modes, recorded files will be saved to the working directory, which can be specified in Directory Settings. (Chapter 5.1.1 and Chapter 5.2.3) You can watch the movies you have recorded by entering Play Mode. (Chapter 7.5) When recording from DVB, you can view/listen to another input (AV in/S-Video) while your program continues recording in the background. Also, when recording from AV in/S-Video, you can watch DVB TV.

When you are done recording, click the Stop button.

7.2 The TimeShift Button

With the TimeShift function, you can pause live TV, leave, and come back and watch your program right where you left it. You can then also fast forward past commercials, or rewind to see a particular scene again.

To begin TimeShifting, simply click the TimeShift button.



The TimeShift button will then turn into a Pause/Play button, letting you pause the video. Clicking it again will begin playback right where you left it.



You will see a green bar at the bottom of the screen, with a slider that shows your current position. You can rewind or fast forward by using the buttons at the left and right side of the bar, or by dragging the slider left and right. You can also click on the Skip to Beginning button to go to the beginning of the TimeShifted file, and click on Skip to End to move back to what is currently showing. When you want to stop TimeShifting, click on the Stop button. You cannot change channels or video sources while TimeShifting.

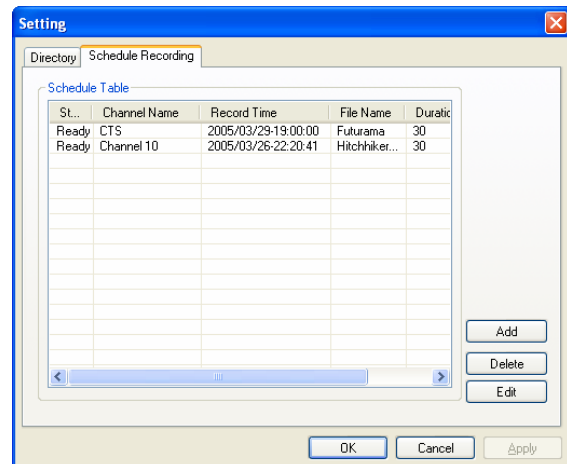


7.3 Schedule Recording

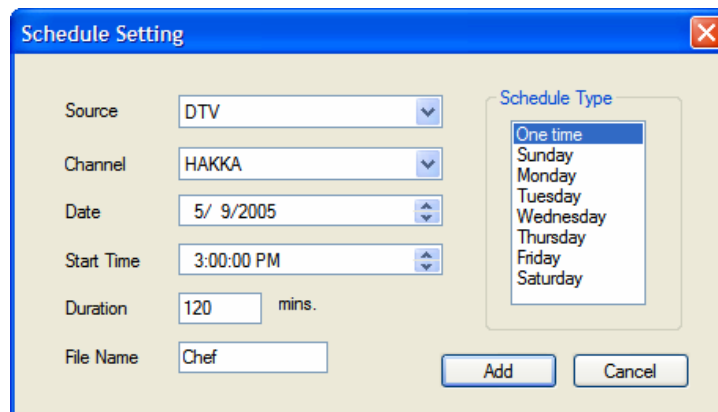
You can access Schedule Recording from the Settings Menu as described in Chapter 5.1.2 and Chapter 5.2.4.

Here you can see a list of items scheduled to record.

By clicking on the **Add** Button, you are able to add a new scheduled recording, the **Delete** button cancels the highlighted scheduled recording and the **Edit** button lets you change the settings of a scheduled recording.



The **Add** and **Edit** buttons open a second menu:



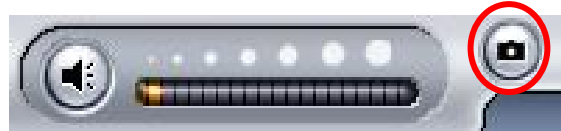
First, select the **Schedule Type** from the right side of the screen. Click “One time” if this is a one-time only recording. To make a weekly recording, click on the days you want the program to record on. Select the **Source** you want to record from, then the **Channel** if you are recording from a TV source. Select the **Date** if this is a one time recording. Enter the **Start Time** and **Duration** of the program you want to record. Finally, enter a **File Name** for the recorded file – if this is a weekly recording, a number will be added to this name for each recording. (Example: FileName01.mpg, FileName02.mpg, etc.)

Click on the **Add** button to finish scheduling the recording.

You can also schedule recordings on digital TV using EPG information. For more details, refer to section 4.10.

7.4 Snapshots

You can take still image snapshots of video and save them to your hard drive. To take a snapshot, click on the Snapshot button, and the current video image will be saved to your hard drive in the working directory specified in Directory Settings. (Chapter 5.1.1 and Chapter 5.2.3) You can see the snapshots you have taken by entering Play Mode. (Chapter 7.5)



7.5 Play Mode

You can see the files you have already recorded by clicking on Play on the left side of the interface. Here you can select the file you wish to view on the right, and it will display in the main window. If the file is an image, it will be displayed. If the file is a movie clip, it will begin to play. You can pause/play or stop the movie using the Pause/Play and Stop buttons at the bottom of the interface.



8. The Remote Control and Keyboard Shortcuts

8.1 Remote Control



1. **Full Screen:** Switches between full screen mode and a normal TV display.
2. **Power:** Turns on/off the LifeView DTV Program.
3. **Numeric Keypad:** Selects the desired channel directly. In Scan Mode you can type in the frequency directly and confirm with "Enter".
4. **Recall:** Switches to the previously viewed channel.
5. **Mute:** Mutes the Audio.
6. **TV/Radio:** Switches between TV and Radio reception.
7. **SAP:** Switches to a Second Audio Program (if available).
8. **CH+/CH-:** Switches to the next/previous channel.
9. **VOL-/VOL+:** Decreases/increases the volume.
10. **Enter:** Confirms a selection.
11. **PIP:** Enables/disables the PIP Mode and to switch between the main and second window.
12. **Source:** Switch between the different sources. (DVB -> AV-In -> S-Video)
13. **Record/Pause:** Starts and stops the recording of the current program.
14. **Swap:** Swaps main and secondary windows when in PIP mode
15. **TimeShift/Pause:** Starts and pauses the TimeShifting of the current program.
16. **Rewind:** Rewinds current TimeShift or recorded video.
17. **Play/Pause:** Resumes and pauses TimeShift or recorded video.
18. **Forward:** Moves forward through TimeShift or recorded video.
19. **Back:** Skips to the beginning of a recorded video.
20. **Stop:** Stops TimeShifting, playback, or recording.
21. **End:** Skips to the end of a recorded video during playback.

8.2 Keyboard Shortcuts

Use the following Hot-Key table for reference to conveniently control TV functions using a keyboard.

Keyboard	Description
F	Full Screen Mode On / Off
Ctrl-Alt-T	Open / Close the DTV application
Number keys 0-9 / NumPad 0-9	Channel Number
BackSpace	Recall Previous Channel
M	Mute on / off
T	Switch between TV / Radio reception
A	Switch to Second Audio Language
↑	Channel Up
↓	Channel Down
→	Volume Up
←	Volume Down
Enter / NumPad Enter	Enter / Confirm
P	Enable/disables PIP mode
I	Input Source (DVB, AV-in, S-Video in)
Ctrl-R	Start Recording
S	Swaps main and secondary windows during PIP mode
Ctrl-T	Start / Pause TimeShift
W	Rewind
Space	Play / Pause
E	Fast Forward
Q	Skip to beginning
Ctrl-S	Stop Playback / Recording / TimeShifting
R	Skip to end
Ctrl-P	Snapshot

9. Technical Support

9.1 Contact Us

If you have attempted to resolve any problems with your **FlyDVB-S** and still require assistance, contact us by e-mail at support@lifeview.com.tw. You can also see our technical support page on our website at www.lifeview.com, where driver updates will be posted and available for download.

