

NVR4POE 4-Channel 1080p NVR with 4Ch Built-in PoE
NVR8POE 8-Channel 1080p NVR with 8Ch Built-in PoE
NVR16POE 16-Channel 1080p NVR with 16Ch Built-in PoE



FEATURES

- ◆ Real-Time 30FPS/Ch Recording @ 1080p
- ◆ Up to 6MP Recording
- ◆ H.264 Recording Compression
- ◆ Full Mobile Apps for iPhone, iPad & Android
- ◆ Built-in Motion Detection/Privacy Mask
- ◆ Free DDNS Included
- ◆ Free CMS & Streaming Server Software
- ◆ Supports P2P Operation
- ◆ Up to 12TB Storage Capacity
- ◆ Integrated 50W/120W/200W PoE Switch (4/8/16Ch)
- ◆ Included Mouse & IR Remote
- ◆ Dual USBs for Copying Video & Mouse Control
- ◆ Simultaneous HDMI & VGA Video Outputs
- ◆ Up to 16 Channel Synchronous Playback
- ◆ Accepts ONVIF/PSIA Protocols
- ◆ Rack Mount Hardware Included (8 & 16Ch)
- ◆ PAL/NTSC Selectable
- ◆ Built-in Audio & Alarm
- ◆ Supports 2-Way Audio

Full Mobile Apps

Free Guarding Expert Mobile Apps
 for iPhone, iPad, Android,
 Android Tablets and Windows Phone



Guarding Expert

Plug and Play!

Plug and Play Operation with
 Northern 3.0 Megapixel Cameras

*Cameras Sold Separately

IP3D

2.8mm, 100' IR Mini-Dome Camera



IP3W

2.8mm, 30' IR Wedge Camera



IP3B

4.0mm, 65' IR Bullet Camera



IP3T

2.8mm 100' IR Turret Camera



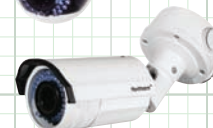
IP3VFD

2.8-12mm 65' IR Dome Camera

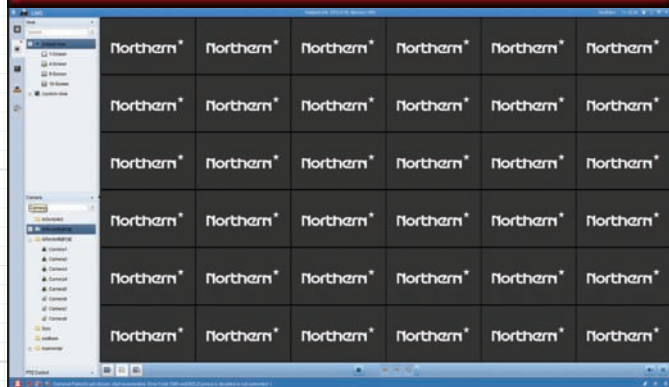


IP3VFB

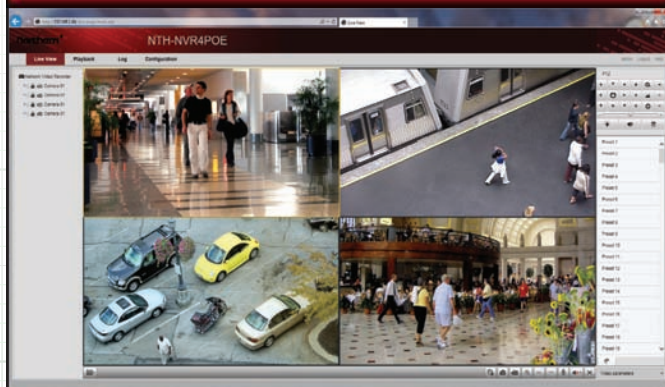
2.8-12mm 100' IR Bullet Camera



CMS Software For PC/Mac



Browser Based Remote Software



Learn More

Mobile Apps for iPhone, iPad & Android

View & Playback Video from multiple mobile devices.

Real Time 1080p Recording

All models record 30FPS per Channel @1080p resolution.

Up to 12TB Storage Capacity

Large Hard Disk storage capacity allows for longer storage of recorded video.

Built in PoE Switch

4Ch/50W, 8Ch/120W or 16Ch/200W PoE Switch for connecting & powering cameras directly from the NVR using only a single CAT5 or CAT6 cable.

Free CMS Software for PC & MAC

Connect to multiple NVRs or individual IP cameras from a single computer with the included CMS software.

Free Streaming Server Software

Perfect for lowering the bandwidth load on the NVR in applications where multiple users need constant remote access.

Mouse & IR Remote Control

Easily control the NVR from either the included Mouse or IR Remote Controller.

HDMI & VGA Video Outputs

Simultaneously display video through both VGA & HDMI monitor outputs.

Built in Motion Detection

Maximize your recording duration by only recording when Motion is detected by the NVR.

Built in DDNS

Free DDNS insures you will always stay connected to your NVR when using a Dynamic IP address.

P2P Operation

Peer to Peer functionality makes set up easier by bypassing the need to configure port forwarding in most routers.

Dual USB Ports

NVR's include front and rear USB ports for making copies of video and mouse control of the DVR.

Remote Accessibility

Remotely connect, monitor, playback, record and change NVR settings via IE, Firefox, Chrome and Safari Browsers.

Plug & Play

Effortless camera set up requires no configuration. Simply plug them in and generate video when used with Northern IP Cameras.

3rd Party Compatibility

Built in protocols for Onvif, Acti, Arecont, Axis, Bosch, Brickcom, Canon, Hikvision, Hunt, Panasonic, Samsung, Sony, Vivotek, Zavio..

Hard Drive Configurations / Part Numbers / Package Contents

DRIVE SIZE	4 Channel	8 Channel	16 Channel
2TB	NVR4POE2T	NVR8POE2T	NVR16POE2T
4TB	NVR4POE4T	NVR8POE4T	NVR16POE4T
6TB	NVR4POE6T	NVR8POE6T	NVR16POE6T
8TB	N/A	NVR8POE8T	NVR16POE8T
12TB	N/A	NVR8POE12T	NVR16POE12T

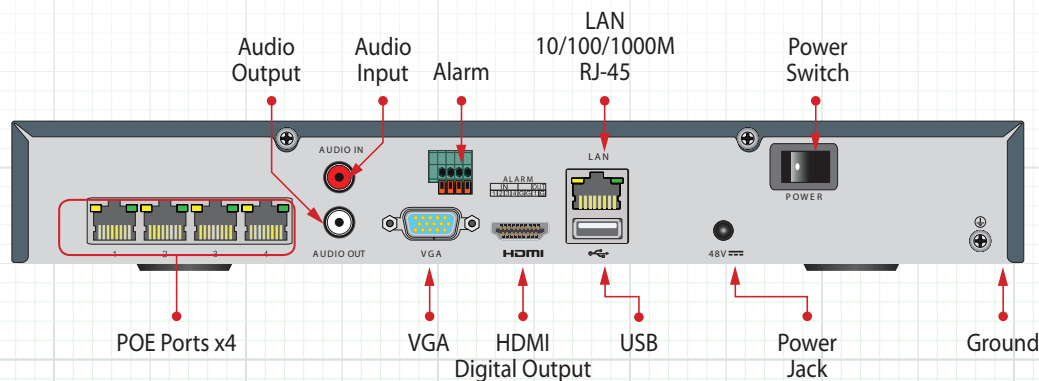
PACKAGE CONTENTS

1. Power Cord (8 & 16 Ch units)
1. Power Supply / Cord (4Ch)
1. IR Remote Control
1. Software CD
1. Quick Start Manual
2. Rack Mount Ears (8 & 16Ch)
1. Mouse

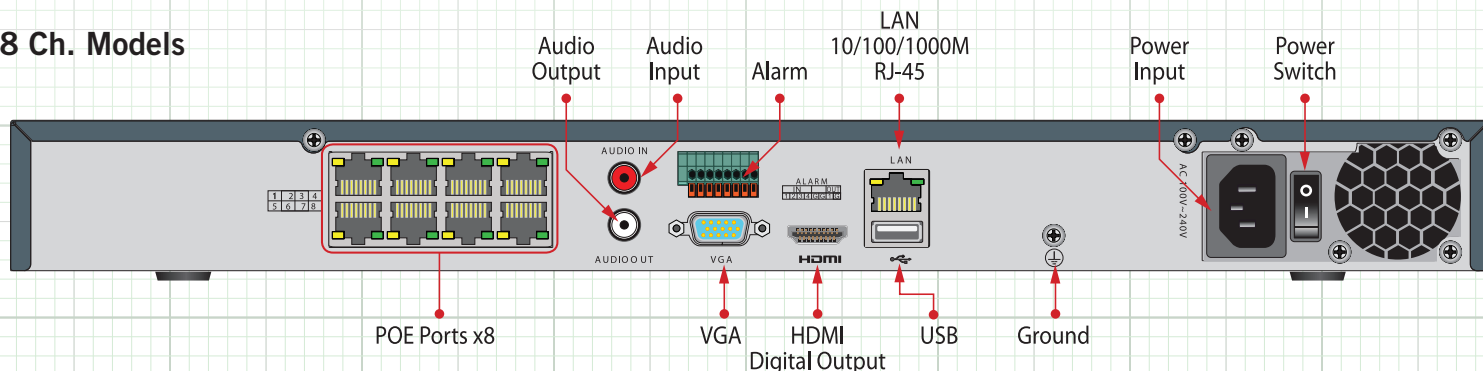


Rear Panel Definitions / Connections

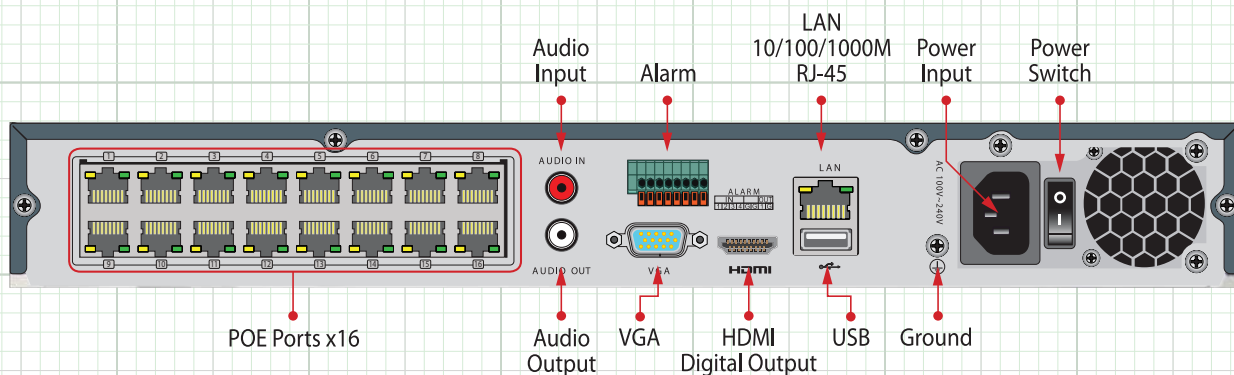
4 Ch. Models



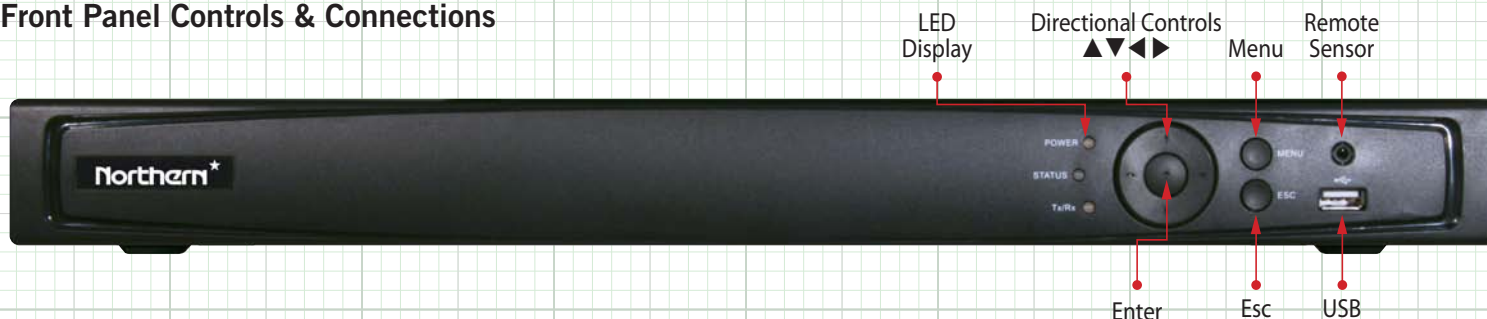
8 Ch. Models



16 Ch. Models



Front Panel Controls & Connections



NVRPOE Series Specifications

	FEATURES	NVR4POE	NVR8POE	NVR16POE
Video/Audio Input	IP Video Input	4-Ch.	8-Ch.	16-Ch.
	Two-Way Audio Input	1-ch, RCA (2.0 Vp-p, 1kΩ)		
	NTSC / PAL	Auto Detection for NTSC/PAL Formats		
	Plug & Play Models	IP3D / IP3B / IP3W / IP3T / IP3VFB / IP3VFD		
	Third Party Compatible Mfg.	ACTI, Arecont, AXIS, Bosch, Brickcom, Canon, HIKvision, PANASONIC, Pelco, SAMSUNG, SANYO, SONY, Vivotek, ZAVIO, ONVIF, PSIA		
Network	Incoming Bandwidth	40Mbps	80Mbps	160Mbps
	Outgoing Bandwidth	80Mbps		
	Remote Connection	32	128	
Video/Audio Output	Recording Resolution	6MP/5MP/3MP/1080P/UXGA/720P/VGA/4CIF/DCIF/2CIF/CIF/QCIF		
	Frame rate	Main stream: 50 fps (P) / 60 fps (N)		
		Sub-stream: 50 fps (P) / 60 fps (N)		
	Simultaneous Outputs	Yes - VGA and HDMI Simultaneous Outputs		
	HDMI/VGA Output Resolution	1-ch: 1920 × 1080P /60Hz, 1600 × 1200 /60Hz, 1280 × 1024 /60Hz, 1280 × 720 /60Hz, 1024 × 768 /60Hz		
De-coding	Audio Output	1-ch, RCA (Linear, 1kΩ)		
	Live View / Playback Resolution	6MP / 5MP / 3MP / 1080P / UXGA / 720P / VGA / 4CIF / DCIF / 2CIF / CIF / QCIF		
	Playback Capability	4-Ch.@1080P	8-Ch.@720P, 6-Ch. @1080P	16-Ch.@4CIF, 12-Ch.@720p, 6-Ch.@1080p
Recording & Playback	Record Mode Types	Manual, Continuous, Alarm, Motion, Motion & Alarm		
	Record Time Periods	8 Recording Time Periods with Separate Record Types		
	Pre & Post Recording	Pre & Post Recording for Alarm & Motion Detection / Pre Recording for Schedule & Manual Recording		
	Redundant Recording	N/A	Yes - Available only in 2 HDD configurations	
	Recording Parameters	Independent for Each Channel (Resolution, Frame Rate, Bit Rate, Image Quality, etc.)		
	Zooming	Available in Live View & Playback		
	Synchronous playback	4Ch, 720P / 2Ch, 1080P / 1Ch, 5MP	8Ch, 4CIF / 4Ch, 720P / 2Ch, 1080P / 1Ch, 5MP	16Ch,4CIF / 12Ch,720p / 6Ch,1080p / 1Ch,6MP
	Playback Controls	Pause, Reverse Play, Speed Up, Speed Down, Skip Forward, Skip Backward, Mouse Drag		
Hard Disk	Searching	Search Recorded Files by Events (Alarm Input / Motion Detection)		
	SATA	1 SATA interface for 1 HDD	2 SATA interfaces for 2 HDDs	
	Capacity	Up to 6TB for each disk		
	Max Storage	6TB	12TB	
External Interface	HDD Detection	Built-in S.M.A.R.T and Bad Sector Detection		
	Network Interface	1 RJ-45 10 /100 /1000 Mbps self-adaptive Ethernet interface		
	USB Interface	1 × USB 2.0 (Front Panel) and 1 × USB 3.0 (Rear Panel)		
IVMS Software	Alarm In/Out	4-In / 1-Out		
	CMS Client - Included	Yes		
	Video Server - Included	Yes		
PoE	Streaming Server - Included	Yes		
	Network Interface	4 Independent 100 Mbps PoE	8 Independent 100 Mbps PoE	16 Independent 100Mbps
	Max. Power	50W	120W	200W
General	Supported Standard	AF and AT		
	Power Supply	External / 48V DC Included	Internal / 110~220V AC	
	Consumption	≤ 10W (without hard disk and PoE)		≤ 15W (without hard disk and PoE)
	Operating Temperature	-10 °C ~ +55 °C (+14 °F~ + 131 °F)		
	Operating Humidity	10 % ~ 90 %		
	Chassis	1U chassis	19" rack-mount 1U chassis	15" rack-mount 1U chassis
	Dimensions (W × D × H)	315 × 230 × 45mm / (12.4"x9.1"x1.8")	445 × 290 × 45mm / (17.5" × 11.4" × 1.8")	380 × 290 × 48mm / (15" × 11.4" × 1.9")
Weight	≤ 1 kg (2.2 lb.) (without hard disk)			

Note: Specification subject to change without notice